



# Kelleher Road Trespass

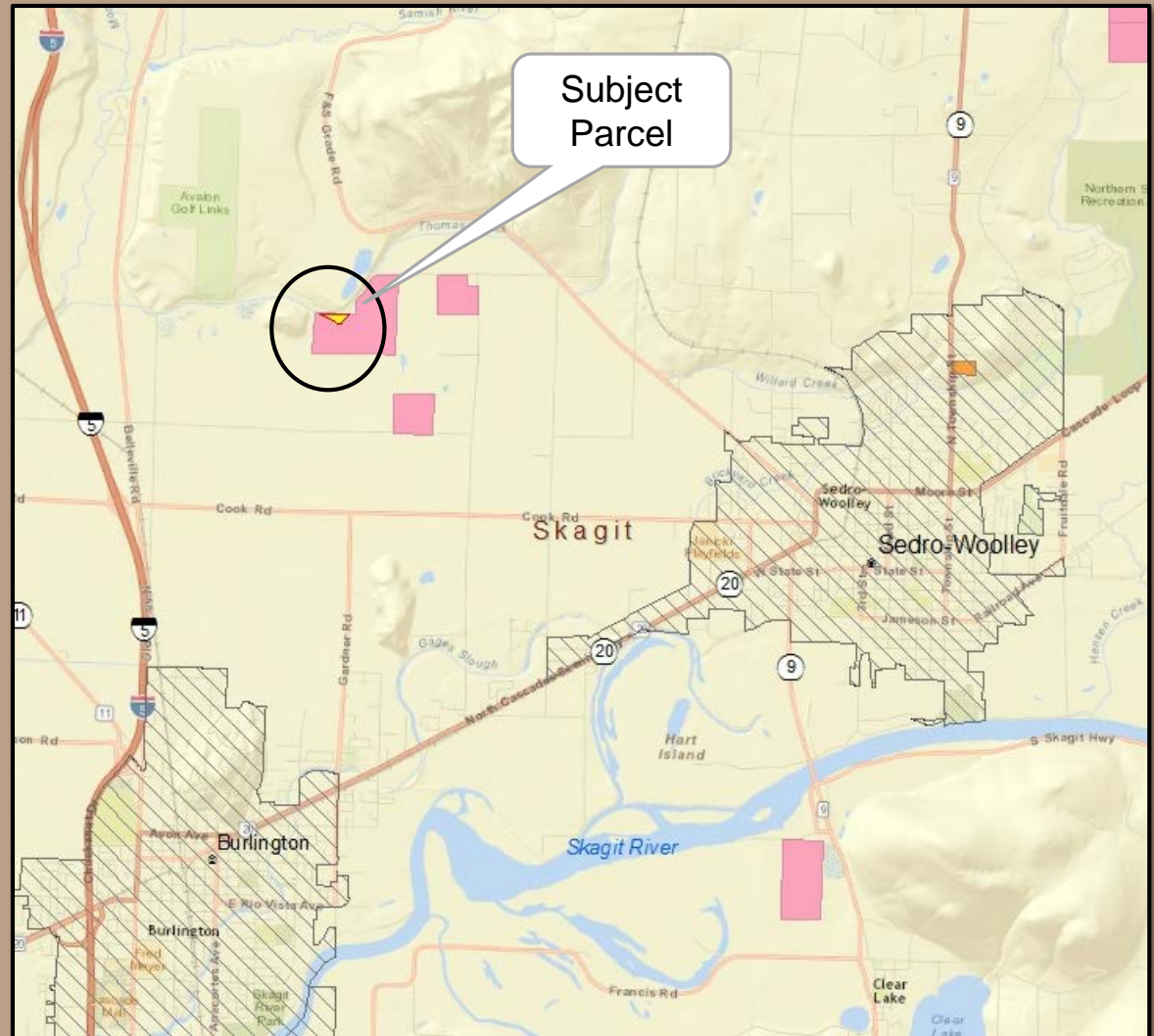
## PROPOSED DIRECT TRANSFER Skagit County



# Kelleher Road Trespass

## Location

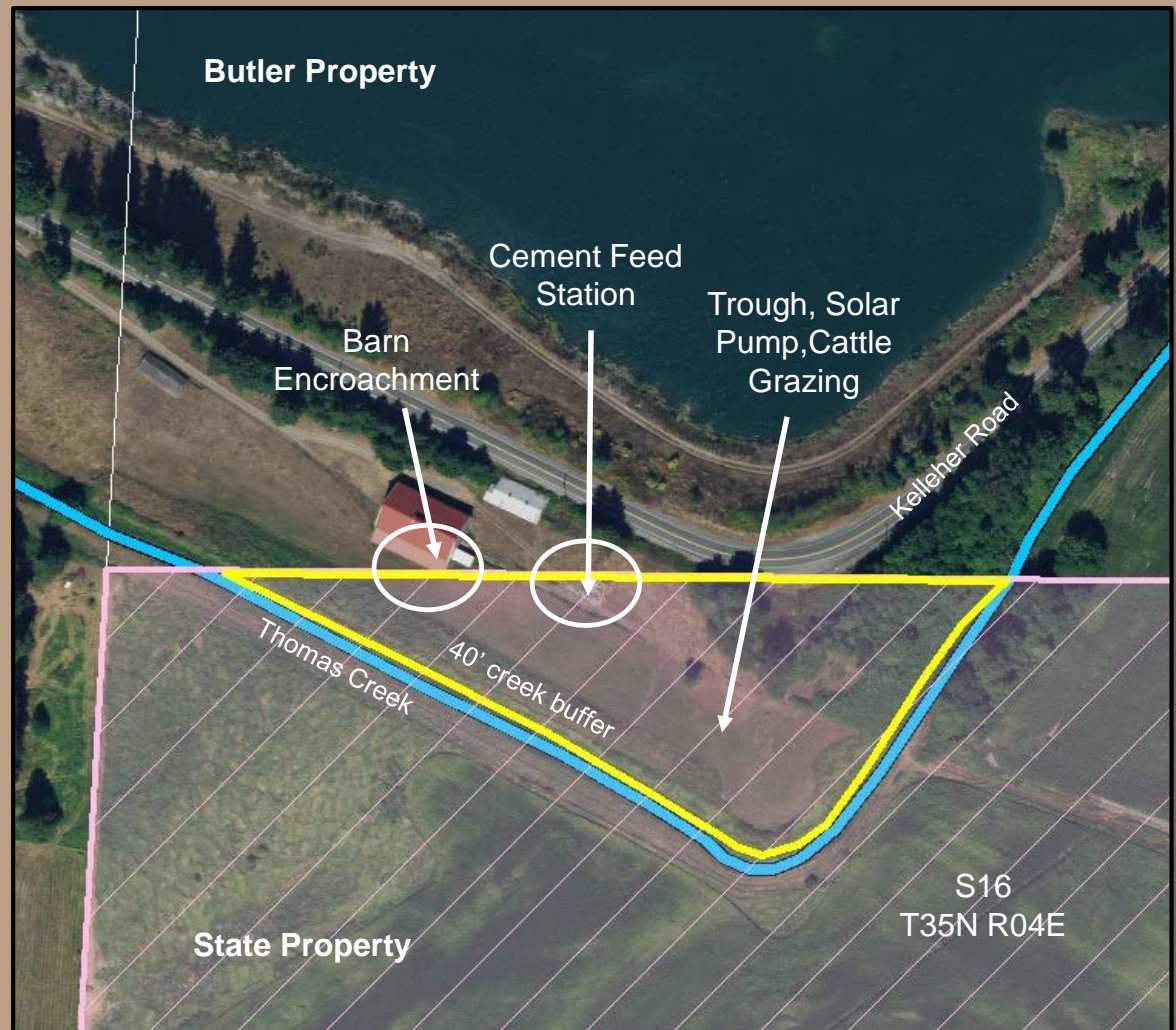
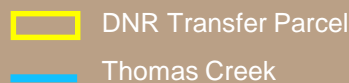
- Skagit County
- North of Sedro-Woolley and Burlington
- Common School Trust



# Kelleher Road Trespass

## Trespass

- 4.5 acre parcel segregated by Thomas Creek
- Clean Water Initiative & Conservation Plan on creek.



# Kelleher Road Trespass

## Benefits

- Resolves a trespass on Common School Trust land.
- Establishes a manageable boundary.
- Builds a good relationship with a neighbor.
- Proceeds will used to purchase replacement land for the Common School Trust.





# Kelleher Road Trespass



**Appraised  
Value:**

**\$7,690**



# Kelleher Road Trespass

## Resolution 1510





