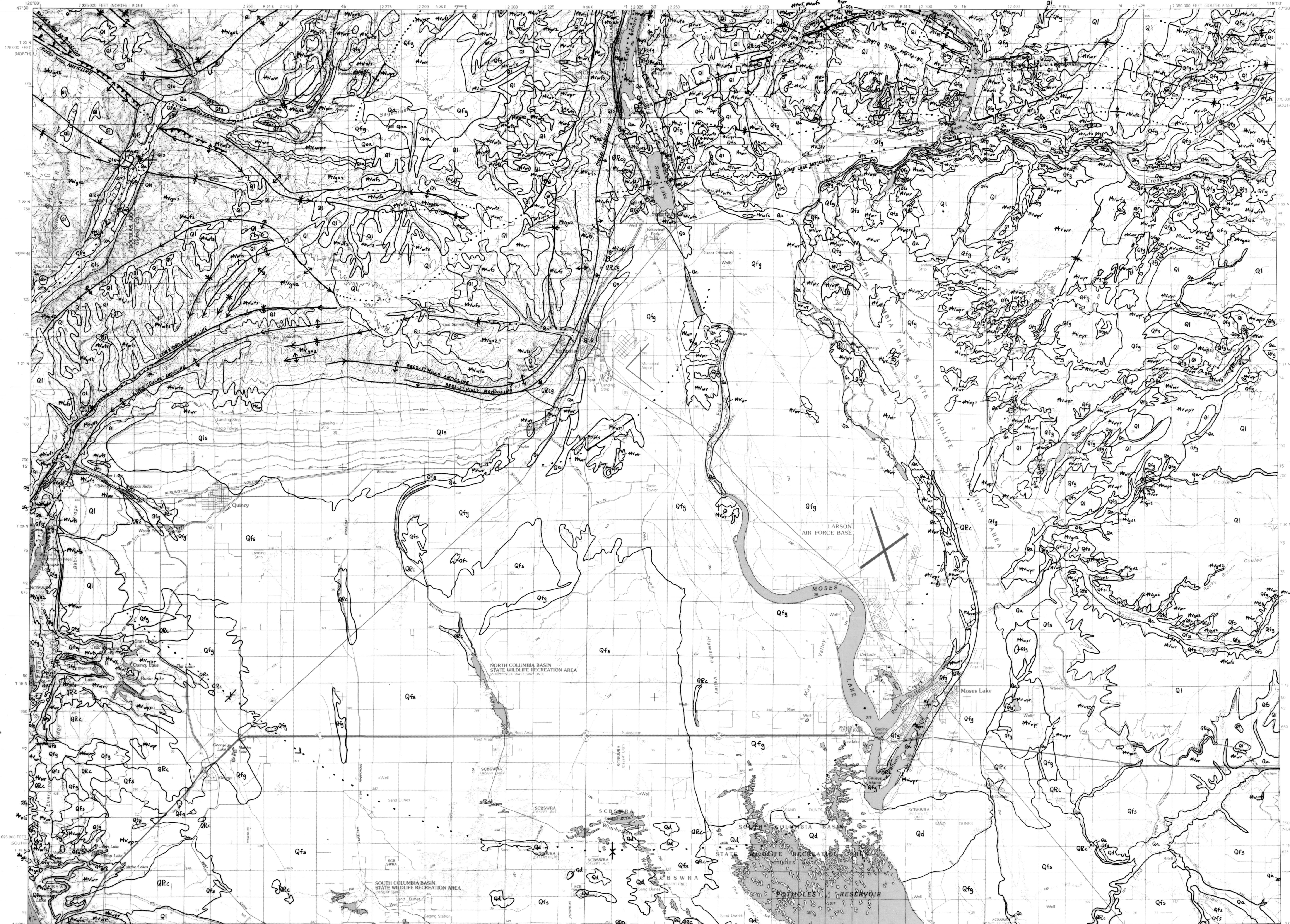


MOSES LAKE, WASHINGTON

30X60 MINUTE SERIES (TOPOGRAPHIC)

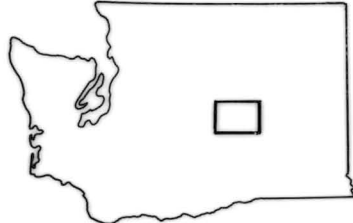


- GEOLOGIC UNITS**
- QUATERNARY SEDIMENTARY DEPOSITS**
- Qa Alluvium (Holocene to Pleistocene)
  - Qls Landslide deposits (Holocene to Pleistocene)
  - Qd Dune sand (Holocene to Pleistocene)
  - Ql Loess (Holocene to Pleistocene)
  - Qoa Older alluvium (Quaternary ?)
- DEPOSITS OF OUTBURST FLOODS FROM GLACIAL LAKE MISSOULA**
- Qfg Gravel (Pleistocene)
  - Qfs Sand and silt (Pleistocene)
- QUATERNARY AND TERTIARY SEDIMENTARY DEPOSITS**
- QRCg Basaltic fanglomerate of the Ringold Formation (Pleistocene to Pliocene)
  - QRCc Tuffaceous sand and silt of the Ringold Formation (Pleistocene to Pliocene)
- TERTIARY VOLCANIC ROCKS**
- YAKIMA BASALT SUBGROUP OF COLUMBIA RIVER BASALT GROUP**
- Mvwr Wanapum Basalt, Priest Rapids Member (middle Miocene)
  - Mvwr Wanapum Basalt, Roza Member (middle Miocene)
  - Mvws Wanapum Basalt, Frenchman Springs Member (middle Miocene)
  - MvgN2 Grande Ronde Basalt, magnetostratigraphic unit N2 (middle Miocene)
  - MvgR2 Grande Ronde Basalt, magnetostratigraphic unit R2 (middle Miocene)

- EXPLANATION**
- Scratch boundary - indicates unreconciled differences at source map boundaries
  - Contact
  - Fault - dotted where concealed
  - Fault - ball and bar on downthrown side; long dashed where approximately located
  - Thrust fault - sawtooth on upper plate; dotted where concealed; long dashed where approximately located
  - Anticline - showing direction of plunge; dotted where concealed
  - Syncline - showing direction of plunge; dotted where concealed
  - Monocline - dotted where concealed

GEOLOGIC MAP OF THE MOSES LAKE 1:100,000 QUADRANGLE, WASHINGTON

Compiled by  
CHARLES W. CULICK  
January 1990



THIS REPORT CONSISTS OF 1 MAP AND A 9 PAGE TEXT