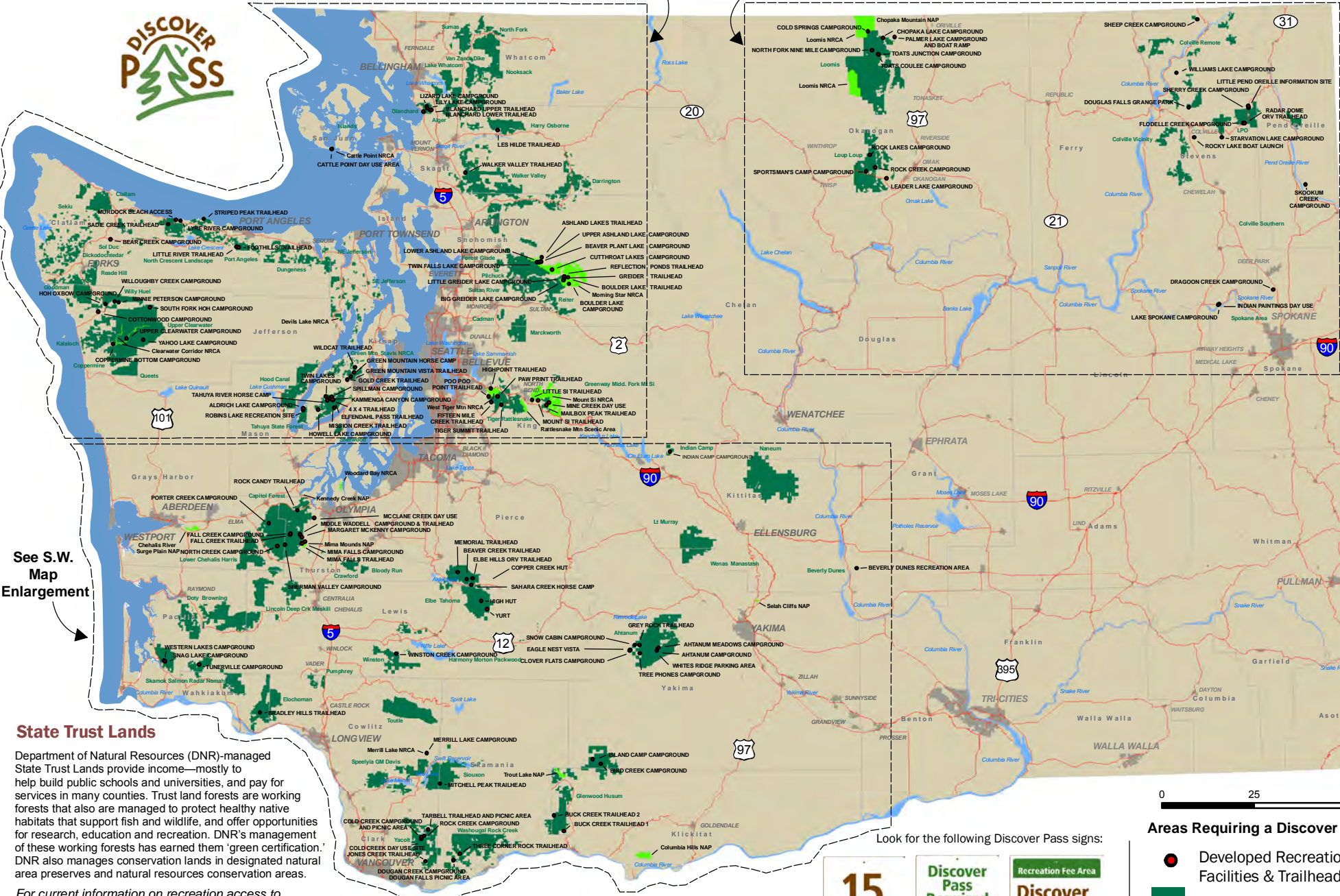


DNR-managed Public Lands Requiring a Discover Pass



See N.W. Map Enlargement

See N.E. Map Enlargement



See S.W. Map Enlargement

State Trust Lands

Department of Natural Resources (DNR)-managed State Trust Lands provide income—mostly to help build public schools and universities, and pay for services in many counties. Trust land forests are working forests that also are managed to protect healthy native habitats that support fish and wildlife, and offer opportunities for research, education and recreation. DNR's management of these working forests has earned them 'green certification.' DNR also manages conservation lands in designated natural area preserves and natural resources conservation areas.

For current information on recreation access to DNR-managed lands, visit: dnr.wa.gov/recreation

Thank you for your support in keeping these recreation areas open.

discoverpass.wa.gov 1-866-320-9933



0 25 50 Miles

Areas Requiring a Discover Pass:

- Developed Recreation Facilities & Trailheads
- Recreation Areas
- DNR-managed Natural Areas

DNR Asset & Property Management Division, Recreation Program, Map Updated: November 2, 2011 cartography: Jason Goldstein graphic design assistance: Luis Prado

Every effort has been made to ensure the accuracy of this map. However, due to changes in ownership and agency modification of data layers, plus the need to rely on data from outside the agency, the Department of Natural Resources cannot accept responsibility for errors or omissions. Therefore, there are no warranties which accompany this material.

