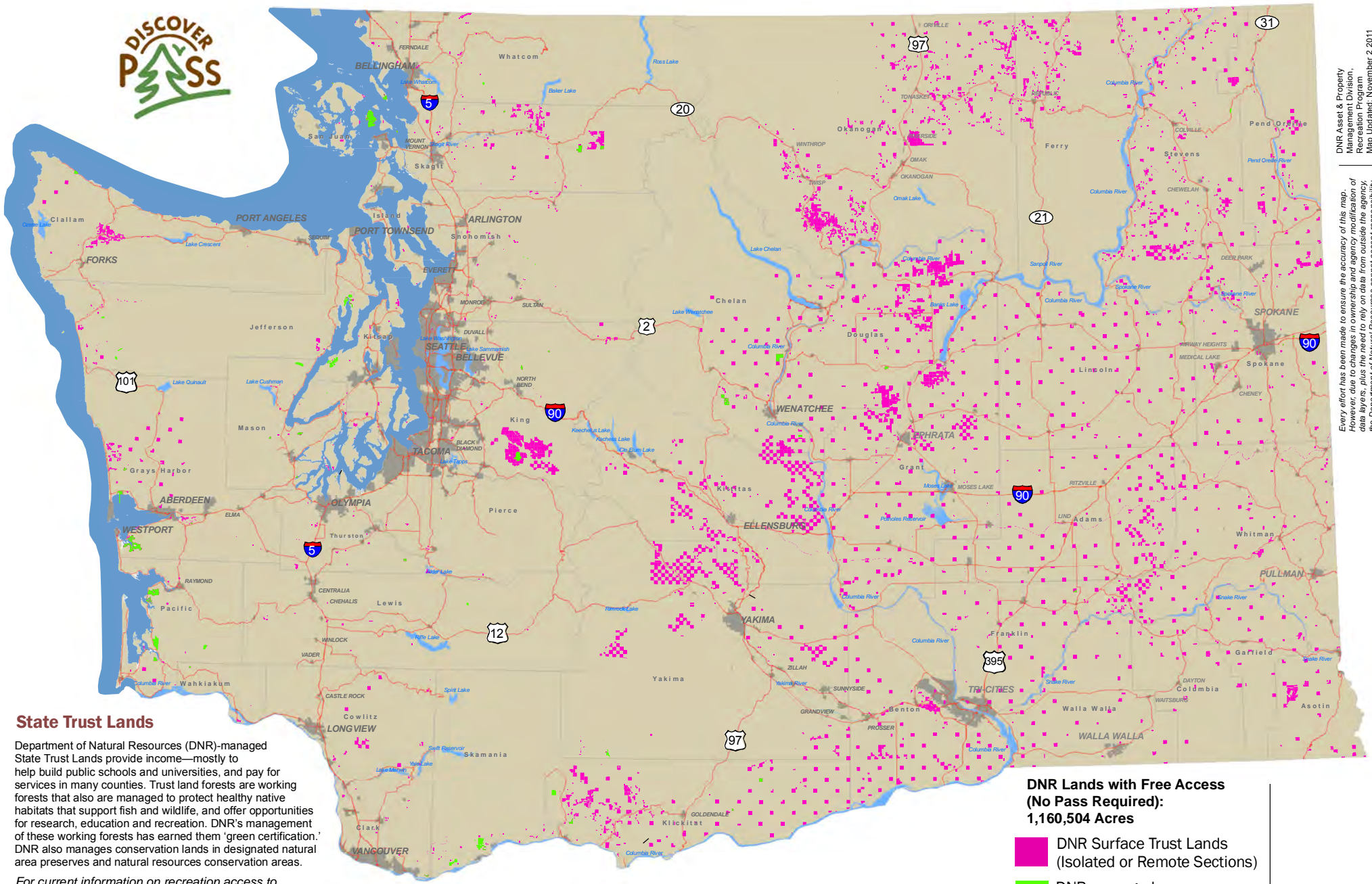


# DNR-managed lands where a Discover Pass is not required.



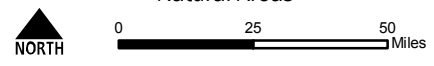
## State Trust Lands

Department of Natural Resources (DNR)-managed State Trust Lands provide income—mostly to help build public schools and universities, and pay for services in many counties. Trust land forests are working forests that also are managed to protect healthy native habitats that support fish and wildlife, and offer opportunities for research, education and recreation. DNR’s management of these working forests has earned them ‘green certification.’ DNR also manages conservation lands in designated natural area preserves and natural resources conservation areas.

For current information on recreation access to DNR-managed lands, visit: [dnr.wa.gov/recreation](http://dnr.wa.gov/recreation)

**DNR Lands with Free Access (No Pass Required):**  
1,160,504 Acres

- DNR Surface Trust Lands (Isolated or Remote Sections)
- DNR-managed Natural Areas



DNR Asset & Property Management Division.  
 Recreation Programs  
 Map Updated: November 2 2011  
 cartography: Jason Goldstein  
 graphic design assistance: Luis Prado  
 Every effort has been made to ensure the accuracy of this map. However, due to changes in ownership and agency modification of data layers, plus the need to rely on data from outside the agency, the Department of Natural Resources cannot accept responsibility for errors or omissions. Therefore, there are no warranties which accompany this material.