



Public Auction Sale of Timber

December 2021

Book 1030



IMPORTANT NOTICES

Natural Resources (DNR)

Governmental Regulatory Actions or Orders

The purchaser assumes the risk of liabilities related to regulatory actions or orders by any government agency that may affect the operability of these timber sales. Such regulatory actions or orders include, but are not limited to, actions taken pursuant to the State Forest Practices Act, Chapter 76.09 RCW, and the Federal Endangered Species Act, 16 U.S.C. §§ 1531-1544. Please see timber sale contract clauses G-066 and G-220 for further information.

Threatened and Endangered Species

DNR cannot verify the presence or absence of any threatened or endangered species that may affect the operability of the timber sale. Purchasers must rely on their own assessments.

Export Restricted

All timber purchased under these state DNR contracts shall not be exported outside of the United States until the timber has been processed. Purchasers shall not violate any of the prohibitions in WAC 240-15-015 (relating to the prohibitions on export and substitution), WAC 240-15-025 (relating to reporting requirements), and WAC 240-15-030 (relating to enforcement). If purchasers knowingly violate WAC 240-15-015, purchasers shall be barred from bidding on or purchasing export restricted timber as provided.

Cover photos

Timber Sales in this book are from state trust lands, managed to help build K-12 public schools, state universities, colleges, prisons, mental hospitals, the state Capitol; and to support local services in many counties.

Top right: Landscape view of DNR-managed trust lands in western Washington. Photo courtesy of DNR staff.

Second down right: Timber harvest operations on DNR-managed trust land. Photo courtesy of DNR staff.

Third down right: Log truck loaded with timber harvested from DNR-managed trust land. Photo courtesy of DNR staff.

Bottom right: Marcus Whitman Elementary School in Richland Washington. Photo courtesy of Richland School District.

Bottom middle: Storytime at the Shelton Timberland Library. Photo courtesy of Timberland Regional Library.

Bottom left: Douglas-fir seedlings growing at the Webster Nursery. Many of these seedlings will be planted following timber harvest on DNR-managed trust lands. Photo courtesy of DNR staff.

Table of Contents

Certification Opportunities for DNR Timber Purchasers	Page 3
Bidder/Purchaser Auction and Bidding Information	Page 5
Summary of All Sales Being Offered in December	Page 9
Bluehorse	Page 11
Vee Are Aitch	Page 17
Point Blank	Page 23
Capra	Page 29
Two Years Out	Page 33
Sealed Bid Form and Instructions	Page 39
Statewide Bid Bond and Instructions	Page 41
Timber Sale per Sale Bid Bond and Instructions	Page 45
Log Sort Sealed Bid Form and Instructions	Page 49



Certification Opportunities for DNR Timber Purchasers

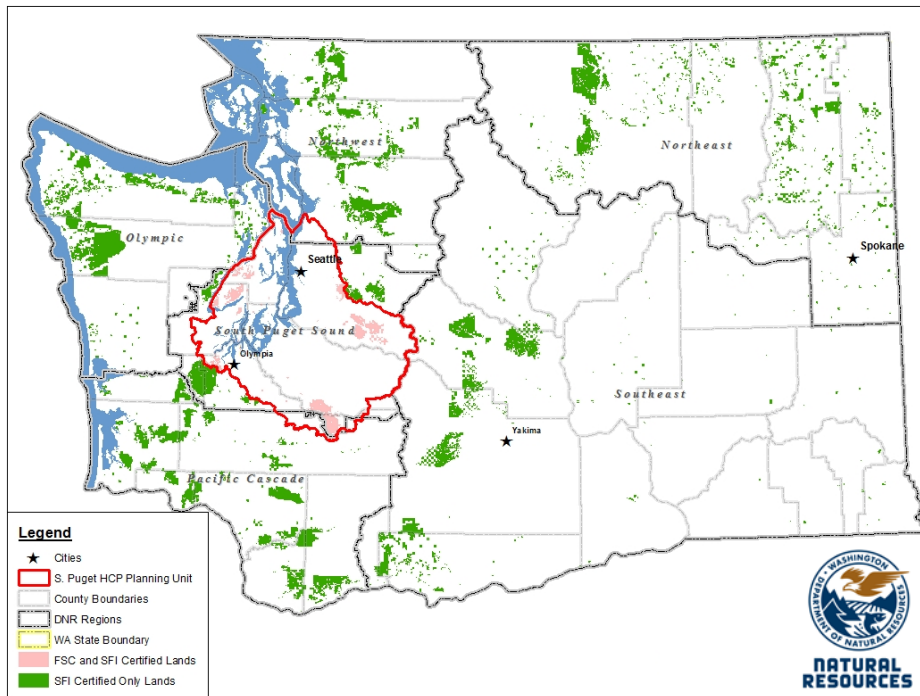
Certified forests are grown to an approved set of standards which demonstrate environmentally responsible, socially beneficial, and economically viable management practices that promote responsible forestry. This unique commitment to responsible forestry recognizes that forest landowners play a critical role in ensuring the long-term health and sustainability of our forests.

Forest Stewardship Council® (FSC®) is an independent, non-profit organization that promotes responsible management of the world's working forests through the development of forest management standards, a voluntary certification system, and trademarks that provide recognition and value to products bearing the FSC label in the marketplace. FSC standards ensure forestry is practiced in an environmentally responsible, socially beneficial, and economically viable way.

Sustainable Forestry Initiative Inc. is an independent, non-profit organization internationally endorsed and accepted around the world. The Sustainable Forestry Initiative® (SFI) program is based on the premise that responsible environmental behavior and sound business decisions can coexist. Its three-chamber Board of Directors governs all aspects of the SFI® program, with equal representation from the environmental, economic, and social sectors.

Currently, all Department of Natural Resources (DNR)-managed forestlands and conservation areas in Washington State are certified under the SFI program Standard. Forestlands within DNR's South Puget Habitat Conservation Plan Planning Unit, located within parts of King, Pierce, Thurston, Lewis, Kitsap, and Mason counties, are dually certified under both the FSC-US Forest Management Standard and the SFI program Standard.

Certification under each standard involves an inspection audit of the landowner's forest management activities by an independent, accredited third-party to verify that it meets specified forest management principles. If the forest unit complies with the specific standard, the landowner receives a certificate of conformance ensuring that responsible forestry is being practiced. Both standards encourage integration of perpetual growing and harvesting of trees with strong measures to protect wildlife, plants, soil, water, and air quality. Both standards provide a seal of approval that forests certified under these principles are well-managed. The global marketplace recognizes and endorses multiple forest certification standards. Each standard has individual market niches. By being dually certified, DNR can maximize its customer base and provide choices to the consumer.



DNR's FSC certificate number is: BV-FM/COC-080501

DNR's SFI certificate number is: PwC-SFIFM-513

DNR-managed forestlands within the South Puget Habitat Conservation Plan Planning Unit (located within parts of King, Pierce, Thurston, Lewis, Kitsap, and Mason counties) are certified as being in compliance with the Forest Stewardship US Forest Management Standard.

To learn more about chain of custody and demonstrating that your timber is derived from a responsibly managed forest and/or to learn more about becoming a participant in the FSC Program, visit <https://us.fsc.org/>.

To learn more about DNR timber sales certified under the FSC Standard, visit www.dnr.wa.gov.

FSC A.C. owns all right, title, and interest in and to the Forest Stewardship Council trademarks.

All DNR-managed forested state trust lands across the state have been certified as being in compliance with the Sustainable Forestry Initiative Forest Management Standard.

To learn more about chain of custody and demonstrating that your timber is derived from a responsibly managed forest and/or to learn more about becoming a participant in the SFI program, visit www.sfiprogram.org.

To learn more about DNR timber sales certified under the SFI program Standard, visit www.dnr.wa.gov.

SFI Marks are registered marks owned by Sustainable Forestry Initiative Inc.

To learn more about certification on DNR-managed forested state trust lands, visit <https://www.dnr.wa.gov/programs-and-services/product-sales-and-leasing/timber-sales/forest-certification> or contact:

Product Sales & Leasing Division, Product Sales Section:

Koshare Eagle, Assistant Division Manager, 360-902-1561, koshare.eagle@dnr.wa.gov
 Steve Teitzel, Operations, 360-902-1741, steve.teitzel@dnr.wa.gov

Forest Resources Division, HCP and Scientific Consultation Section:

Allen Estep, Assistant Division Manager, 360-902-2898, allen.estep@dnr.wa.gov
 Nicole Jacobsen, Forest Certification Program Lead, 360-902-1283, nicole.jacobsen@dnr.wa.gov

Washington State Department of Natural Resources (DNR)

Bidder's/Purchaser's Inspection of Sale Area and Forest Products

Acreage estimates and volume estimates contained within each timber notice of sale and each timber sale contract are made only for administrative and identification purposes. Except as expressly provided by the timber sale contract, the purchaser shall be responsible for paying the entire purchase price, even if the actual acreage or timber volume varies from the estimated quantity or volume shown.

All prospective bidders have the opportunity and are expected to inspect the sale area and the forest products located thereon. Bidders shall not rely on any representations by the State including, but not limited to, acreage estimates, volume estimates, appraisal or pre-bid documentation. The successful bidder/purchaser will further warrant that they have entered the timber sale contract without any reliance upon the DNR's volume estimates, acreage estimates, appraisals, pre-bid documentation, or any other representation by the DNR.

Any timber sale contract arising out of these public auctions will require the successful purchaser to warrant that they are entering the timber sale contract based solely upon their own judgment of the value of the forest products, formed after their own examination and inspection of both the timber sale area and the forest products being sold.

Exclusion and Disclaimer of Warranties

The PARTIES AGREE that the IMPLIED WARRANTIES OF MERCHANTABILITY AND FITNESS FOR A PARTICULAR PURPOSE, and ALL OTHER WARRANTIES EXPRESS OR IMPLIED, ARE EXCLUDED from this transaction, and shall not apply to the goods sold. For example, THE FOLLOWING SPECIFIC MATTERS ARE NOT WARRANTED, and are EXCLUDED from this transaction:

- A. ***The merchantability of the forest products.*** The use of the term "merchantable" in any document is not intended to vary the foregoing.
- B. ***The condition of the forest products.*** All forest products will be conveyed "AS IS."
- C. ***The acreage contained within any sale area.*** Any acreage descriptions appearing in the timber notices of sale, timber sale contract, timber sale map or other documents are estimates only, provided solely for administrative and identification purposes.
- D. ***The volume, quality, or grade of the forest products.*** The descriptions of the forest products to be conveyed are estimates only, made solely for administrative and identification purposes.
- E. ***The correctness of any soil or surface conditions, presale construction appraisals, investigations, and all other pre-bid documents prepared by or for the State.*** These documents have been prepared for the State's appraisal purposes only.
- F. ***That the sale area is free from threatened or endangered species, or their habitat.*** The State is not responsible for any interferences with forestry operations that result from the presence of any threatened or endangered species, or the presence of their habitat, within the sale area.
- G. That the forestry operations to be performed under this contract will be free from regulatory actions by governmental agencies. The State is not responsible for actions to enforce regulatory laws, such as the Washington Forest Practices Act (Chapter 76.09 RCW), taken by the Department of Natural Resources or any other agency that may affect the operability of these timber sales.
- H. Items contained in any other documents prepared for or by the State.

Please also see timber sale contract clause G-060 for further information.

BIDDING PROCEDURES FOR TIMBER AUCTIONS

The general requirements that follow are a part of all Timber Notices of Sale to be auctioned by the Department of Natural Resources (DNR).

General Information

The State reserves the right to waive minor irregularities and the right to reject any or all bids.

- A. This book contains the timber notices of sale and maps for each timber sale scheduled to be auctioned. More specific information can be obtained by contacting the appropriate region office at the number listed on the back cover of this book. Sales may be added to each monthly auction by the Department which are not included in this publication. This publication is not updated following original production.
- B. The timber notice of sale is a summary of sale information. For more specific information, interested parties are encouraged to view the Auction Packets on www.dnr.wa.gov. Auction Packets contain **DRAFT** copies of the timber notice of sale, map, contract, road plan, cruise data, precruise and cruise narrative, and other associated documents.
- C. Timber sale auction packets may also be obtained at no charge for individual sales by visiting the appropriate region office.
- D. Timber sale contracts contain extensive terms and conditions that will be binding upon successful high bidders. Each bidder should carefully review all terms contained in the appropriate **DRAFT** timber sale contract prior to bidding on a sale, and should review the final contract prior to signing. **DRAFT** timber sale contracts are contained in the auction packets and are available upon request at the respective region office.
- E. Sales advertised in this book are subject to the Board of Natural Resources approval before they will be sold. The Board meets and approves sales approximately six weeks prior to auction.
- F. The State does not guarantee the accuracy of any information contained herein pertaining to particular sales. Therefore, all prospective purchasers are expected to make their own independent inspections and appraisals prior to bidding.
- G. If any conflict exists between the information in the Timber Notice of Sale, timber sale map, sale auction packets and that in the timber sale contract, the signed contract will prevail.
- H. Purchasers must pay the Forest Excise Tax on the bid price, permanent road construction costs, and other considerations. The tax rate is 5% without the EARR credit and 4.2% with the credit. For more information contact the Department of Revenue, Forest Tax Section at 1-800-548-8829.
- I. **All sales are subject to confirmation by the DNR under RCW 79.15.120.**
- J. **Within 30 days of sale confirmation, the apparent high bidder will provide to the State the Performance Security specified on each Notice of Sale. The successful bidder also agrees to return a signed contract to the State within 30 days of confirmation.** Failure to provide a signed contract to the state within 30 days of confirmation may result in a loss of bidder's rights to the products sold and forfeiture of initial deposit moneys.
- K. Each DNR region office has information about sales offered in that region. For further information, contact the respective DNR region office. Region office addresses and telephone numbers appear on the back cover of this booklet.
- L. The purchaser assumes the responsibility for any costs associated with extra maintenance or repair levied by a county for any county road used by the purchaser.

Auction Time and Location

Auctions will start at 10:00 a.m. and close at 4:00 p.m. on the date and at the location specified in each Timber Notice of Sale.

Bidding Process

- A. All timber will be auctioned using the sealed bid method.
- B. Bids submitted on day of auction must be in the bid box at the specified auction location before 10:00 a.m. The respective DNR region office must receive mailed bids by 4:30 p.m., on the last business day before the auction. Bidders assume all risk for the method of delivery.
- C. The DNR has the right to reject bid forms that are completed incorrectly. *All bid forms must have an original signature on behalf of the person or entity submitting the bid, and must be on the form provided in this booklet or a photocopy thereof. Revised documents are not permissible.* Bidding instructions are on the back of the Sealed Bid Form. A bid deposit must be included in the sealed bid envelope unless using a Timber Sale Statewide Bid Bond.
- D. All bids must include the completed Sealed Bid Form and bid deposit.
- E. Bids will be opened in each respective region in the order in which sales appear in the Public Auction Sale of Timber book (alphabetically by county and by agreement number). Sales added after the book is printed will be inserted to retain this order. Sort sales may be auctioned out of this sequence at the State's convenience.
- F. If a tie bid occurs, the names of the tie bidders will be placed in a hat and the successful bidder will be determined by a drawing.
- G. Opportunities to Withdraw Bids:
For all sales offered on a stumpage basis only, the apparent high bidder on a particular sale will have the option of withdrawing additional sealed bids submitted for any remaining sales to be auctioned. The apparent high bidder must exercise this option within two minutes after the apparent high bidder is announced. This option is not available for sales offered on a delivered basis.

Eligibility to Bid

The following criteria must be met in order to bid on State timber sales:

- 18 years of age (or have a co-signer who meets the eligibility requirements)
- Licensed to do business in the State of Washington
- Eligible to bid on Export Restricted timber
- Authorized to submit bids

Authorized Representatives

Company officers or company authorized representatives may bid on State sales, sign State documents, or sign checks. A list of authorized representatives and their specific authorities must be submitted, in writing, to the Department of Natural Resources, Product Sales and Leasing Division, P.O. Box 47014, Olympia, Washington, 98504-7014, ten days in advance of the auction. *A company owner or officer must sign this submittal.*

Bid Deposits

- A. Required bid deposits are listed on each Timber Notice of Sale.
- B. Bid deposits must be in the form of cash, certified check, cashiers' check, money order or bid bond.
- C. Bid bonds may be either a Timber Sale Per Sale Bid Bond or a Timber Sale Statewide Bid Bond.
- D. All bid deposits shall be submitted by the person or entity submitting the bid and made payable to the Department of Natural Resources. **Third party deposits will not be accepted.**

Timber Sale Per Sale Bid Bonds

- A. The Per Sale Bid Bond shall guarantee payment of the bid deposit **within ten days of auction.**
- B. The balance between the bid bond and the Initial Deposit payment is due **by 4:30 p.m., on the day of auction.**
- C. Additional forms and instructions for a Per Sale Bid Bond are available at any DNR region office.

Timber Sale Statewide Bid Bond

- A. Statewide Bid Bonds shall guarantee payment of the Initial Deposit on any statewide timber sale while the bond is in effect.
- B. The Statewide Bid Bond must be received by the Department of Natural Resources, Product Sales and Leasing Division, P.O. Box 47014, Olympia, Washington, 98504-7014, ten days in advance of the auction date. The bond shall be in the amount of \$150,000.00.
- C. Successful bidders using a Statewide Bid Bond must pay the total Initial Deposit payment (10% of the total bid price) **by 4:30 p.m., on the day of the auction.**
- D. A Statewide Bid Bond cannot be used to secure the Initial Deposit payment due the day of auction.
- E. Additional forms and instructions for a statewide bid bond are available at any DNR region office.

Payments

The initial deposit for a sale is 10% of the total bid value as submitted by the apparent high bidder (25% if the bidder is a defaulter as defined under WAC 332-140-300) and never less than \$5,000.00 for lump sum sales. For Lump Sum sales appraised at less than \$5,000.00, the entire bid value is due on day of auction.

- A. Apparent high bidders using cash, certified check, cashiers' check or money order as a bid deposit must pay the total Initial Deposit amount by 4:30 p.m. on auction day.
- B. Apparent high bidders using a Timber Sale Per Sale Bid Bond as a bid deposit must pay the difference between the bid deposit and the total initial deposit by 4:30 p.m., on the day of auction. The bid bond amount must be replaced with a certified check, cashiers' check, bank draft, cash, money order, or wire transfer within ten days of the auction.
- C. Apparent high bidders using a Timber Sale Statewide Bid Bond must pay the entire Initial Deposit amount by 4:30 p.m. on the day of auction.
- D. All payments must be in the form of a certified check, cashiers' check, bank draft, cash, money order or wire transfer.



Summary Report of All Sales for the Month of December 2021

Board Sales

<u>County</u>	<u>Region</u>	<u>Agree #</u>	<u>FSC® Sale Name</u>	<u>Volume</u>	<u>Value</u>
Grays Harbor Thurston	South Puget	101103	BLUEHORSE	4,962	\$2,122,000.00
Jefferson	Olympic	100664	VEE ARE AITCH	3,165	\$789,000.00
Lewis	Pacific Cascade	100492	POINT BLANK	5,493	\$2,191,000.00
Thurston	South Puget	100995	CAPRA	5,070	\$1,905,000.00
Wahkiakum	Pacific Cascade	102059	TWO YEARS OUT	7,716	\$2,546,000.00
			Total	===== 26,406	===== \$9,553,000.00



*Scan with your smartphone or tablet to go
to the December 2021 timber auction page*



TIMBER NOTICE OF SALE

SALE NAME: BLUEHORSE

AGREEMENT NO: 30-101103

AUCTION: December 14, 2021 starting at 10:00 a.m., COUNTY: Grays Harbor, Thurston South Puget Sound Region Office, Enumclaw, WA

SALE LOCATION: Sale located approximately 7 miles northeast of Oakville.

PRODUCTS SOLD AND SALE AREA:

All timber, except leave trees bounded out by yellow leave tree area tags, trees marked with a single band of blue paint, snags, and down timber existing more than 5 years from the day of sale, bounded by the following: white Timber Sale Boundary tags and the E-Line and E-2070 roads in Unit #1; white Timber Sale Boundary tags, timber type change marked with pink flagging, and the E-Line, E-3030, and E-3040 roads in Unit #2; white Timber Sale Boundary tags and the E-3050 Road in Unit #3.

All forest products above located on part(s) of Sections 21, 22 and 23 all in Township 16 North, Range 4 West, W.M., containing 96 acres, more or less.

CERTIFICATION: This sale is certified under the Sustainable Forestry Initiative® program Standard (cert no: PwC-SFIFM-513)

ESTIMATED SALE VOLUMES AND QUALITY:

Table with columns: Species, Avg DBH, Ring Count, Total MBF, and MBF by Grade (1P, 2P, 3P, SM, 1S, 2S, 3S, 4S, UT). Rows include Douglas fir, Hemlock, Red alder, Maple, Red cedar, and Sale Total.

MINIMUM BID: \$2,122,000.00 BID METHOD: Sealed Bids

PERFORMANCE SECURITY: \$100,000.00 SALE TYPE: Lump Sum

EXPIRATION DATE: October 31, 2023 ALLOCATION: Export Restricted

BID DEPOSIT: \$212,200.00 or Bid Bond. Said deposit shall constitute an opening bid at the appraised price.

HARVEST METHOD: Harvesting activities are estimated to be 12 percent cable, and 88 percent ground based harvest. Cable, tethered, and tracked ground based equipment with non-tethered self-leveling equipment limited to sustained slopes 65 percent or less, all other tracked equipment limited to sustained slopes that are 45 percent or less. Rubber tired skidders are not allowed, except 6-wheeled rubber tired skidders with over-the-tire tracks spanning both sets of rear tires, and tracked skidders, will be allowed for pole removal only on sustained slopes that are 45 percent and less. Yarding may be restricted during wet weather if rutting becomes excessive, per clause H-017.



TIMBER NOTICE OF SALE

ROADS: 10.08 stations of required construction. 3.10 stations of required reconstruction. 21.02 stations of optional construction. 7.35 stations of optional reconstruction. 132.50 stations of required prehaul maintenance. 13.83 stations of abandonment, if constructed. Purchaser maintenance on the E-2065, E-2070, E-3020 from 19+25 to 26+60, E-3040, E-3040-1, E-3041, E-3041-1 and E-3050 roads. Designated maintenance on all other roads used.

Rock for this proposal may be obtained from the State owned Vantage Quarry, and the existing stockpile at Vantage Quarry, at no cost to the Purchaser or any commercial rock source at the Purchaser's expense.

The operation of road construction equipment is not allowed from November 1 to April 30, nor on weekends or State recognized holidays, unless authority to do so is granted, in writing, by the Contract Administrator. If permission is granted to operate from November 1 to April 30, a maintenance plan is required per Road Plan clause 1-26.

The hauling of forest products will not be permitted from November 1 to April 30 unless authorized in writing by the Contract Administrator. If permission is granted to operate from November 1 to April 30, preventative measures may be required to protect water, soil, roads and other forest assets.

ACREAGE DETERMINATION

CRUISE METHOD: Acreage was determined by traversing boundaries by GPS in all units, and length times width for existing roads in Unit #2. GPS data files are available at DNR's website for timber sale auction packets. See cruise narrative for cruise method.

FEES: \$84,354.00 is due on day of sale. \$9.00 per MBF is due upon removal. These are in addition to the bid price.

SPECIAL REMARKS: This sale contains high-quality Douglas-fir.

Purchaser shall cut all hardwood stems greater than 2 inches dbh within all harvest units, leaving a stump no more than 12 inches in height.

Areas restricting operations due to protection of potentially unstable slopes are located within and outside the sale boundary. Locations inside the sale boundary are identified as Non-Tradeable Leave Trees marked with yellow Leave Tree Area tags as shown on the Timber Sale and Logging Plan Maps inside which no trees may be used as tailholds and no equipment may operate within, nor logs yarded through or over. Locations outside the sale boundary are identified as Slope Stability Mitigation Zones on the Logging Plan and Timber Sales Maps. Trees within these areas shall not be used as tailholds.

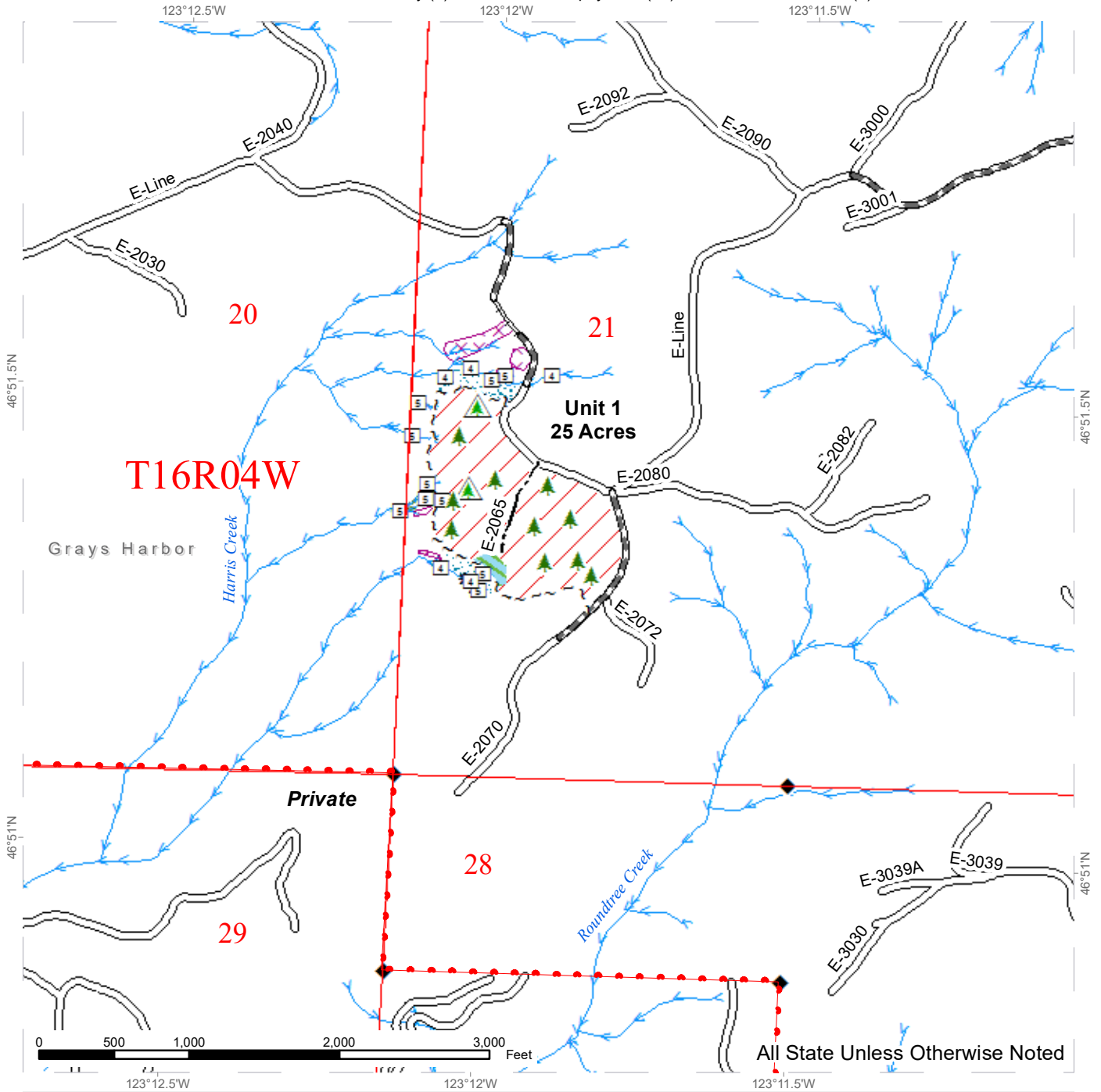
Decking of forest products will not be allowed within the Prohibited Decking Area identified on the Logging Plan and Timber Sale maps.

For the safety of the public, please remove from roads and trails all string from string boxes used during appraising or cruising this sale.

TIMBER SALE MAP

SALE NAME: BLUEHORSE
AGREEMENT #: 30-101103
TOWNSHIP(S): T16R4W
TRUST(S): Common School and Indemnity (3), Forest Board Repayment (42), State Forest Purchase (2)

REGION: South Puget Sound Region
COUNTY(S): Grays Harbor
ELEVATION RGE: 840-1360

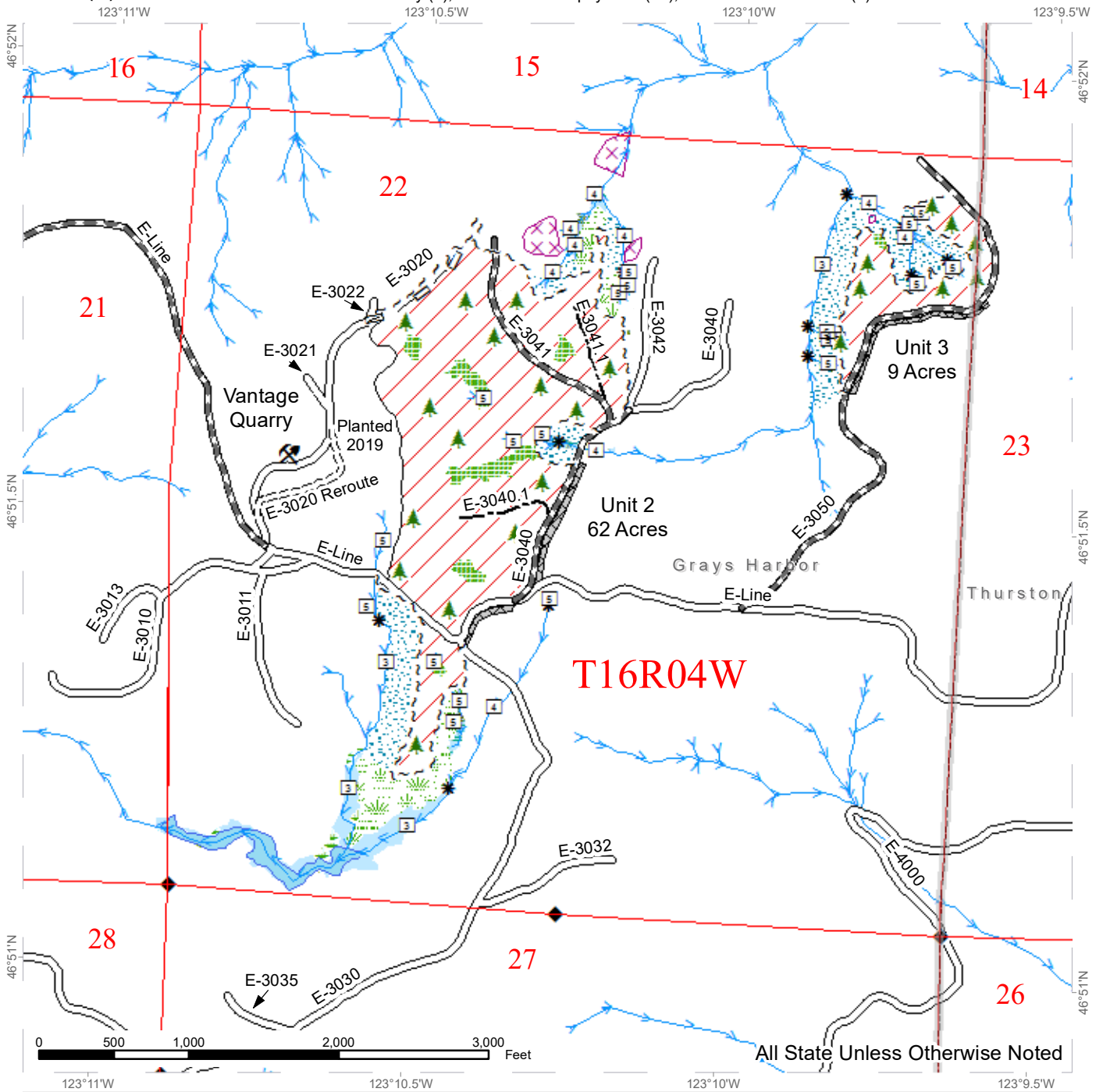


Sale Area	Sale Boundary Tags	Clipped Streams
Non-Tradeable Leave Tree Area	Property Line	Stream Type
Riparian Mgt Zone	Existing Roads	Stream Type Break
Forested Wetland	Required Pre-Haul Maintenance	Leave Tree Area <1/4-acre
Slope Stability Mitigation Zone	Required Reconstruction	Non-Tradeable Leave Tree Area <1/4-acre
	Optional Construction	Survey Monument

TIMBER SALE MAP

SALE NAME: BLUEHORSE
AGREEMENT #: 30-101103
TOWNSHIP(S): T16R4W
TRUST(S): Common School and Indemnity (3), Forest Board Repayment (42), State Forest Purchase (2)

REGION: South Puget Sound Region
COUNTY(S): Grays Harbor, Thurston
ELEVATION RGE: 840-1360

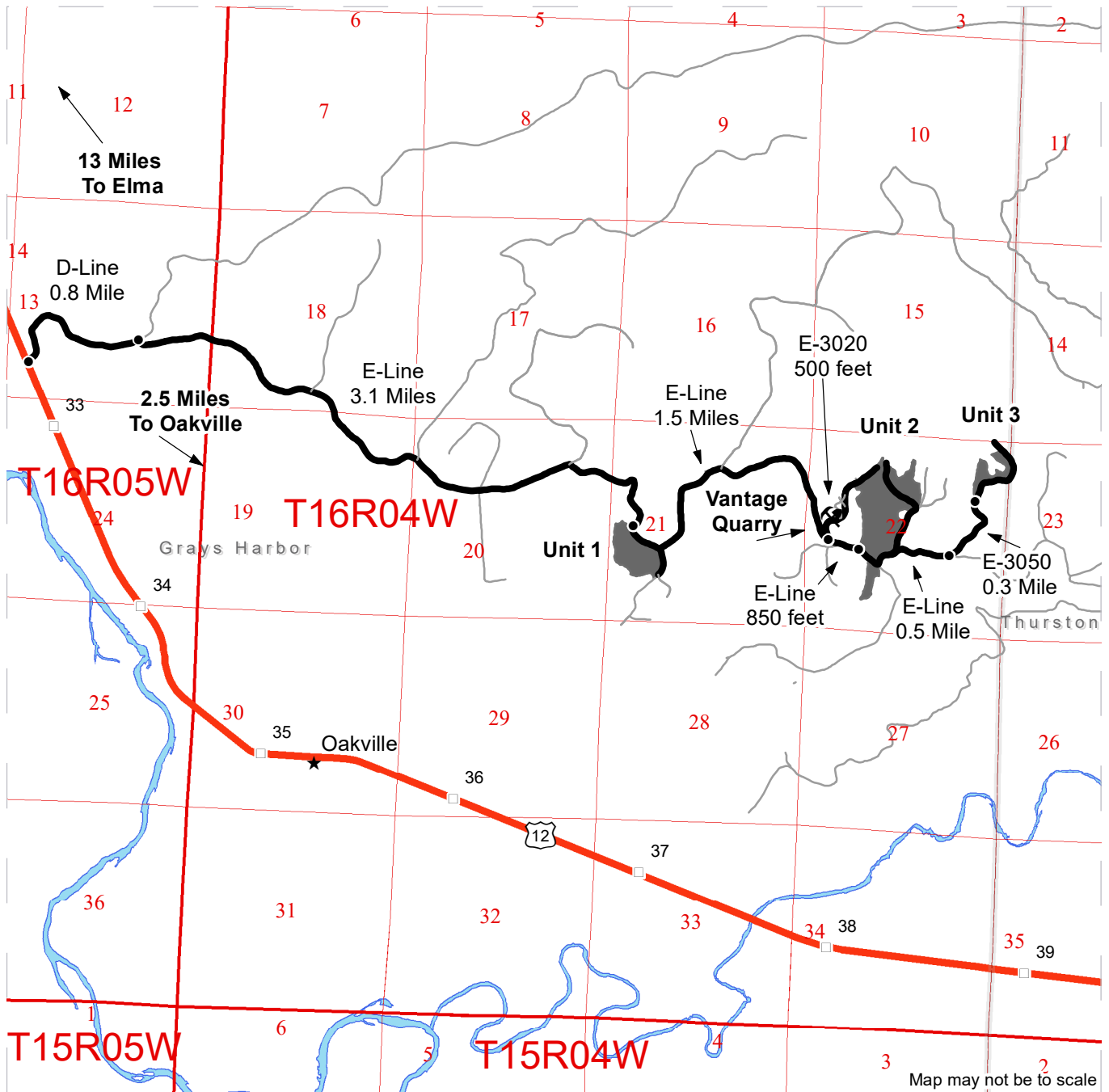


Sale Area	Sale Boundary Tags	Clipped Streams
Leave Tree Area	Timber Type Change	Stream Type
Riparian Mgt Zone	Existing Roads	Stream Type Break
Wetlands - Non-forested	Required Pre-Haul Maintenance	Leave Tree Area <1/4-acre
Forested Wetland	Required Construction	Rock Pit
Wetland Mgt Zone	Optional Construction	Survey Monument
Slope Stability Mitigation Zone	Optional Reconstruction	
Prohibited Decking Area		

DRIVING MAP

SALE NAME: BLUEHORSE
 AGREEMENT#: 30-101103
 TOWNSHIP(S): T16R4W
 TRUST(S): Common School and Indemnity (3), Forest Board Repayment (42), State Forest Purchase (2)

REGION: South Puget Sound Region
 COUNTY(S): Grays Harbor, Thurston
 ELEVATION RGE: 840-1360



	Timber Sale Unit
	Haul Route
	Other Road
	Distance Indicator
	Rock Pit
	Milepost Markers

DRIVING DIRECTIONS:

- Unit 1: From Highway 12, between milepost 32 and 33, turn right (East) onto the D-Line. Continue for 0.8 mile, then turn right (East) onto the E-Line. Continue for 3.1 miles to reach Unit 1.
- Unit 2: From Unit 1, continue on E-Line for 1.6 miles to reach Unit 2.
- Unit 3: From Unit 2, continue on E-Line for 0.5 mile to reach the intersection with the E-3050. From the intersection take the left fork onto the E-3050 and continue for 0.3 mile to reach Unit 3.
- Vantage Quarry: From Unit 1, continue on the E-Line for 1.5 miles to the intersection of the E-3020 road. Turn left (north) and follow the E-3020 for 500 feet to Vantage Quarry.





TIMBER NOTICE OF SALE

SALE NAME: VEE ARE AITCH

AGREEMENT NO: 30-100664

AUCTION: December 15, 2021 starting at 10:00 a.m., Olympic Region Office, Forks, WA

COUNTY: Jefferson

SALE LOCATION: Sale located approximately 35 miles Southeast of Forks

PRODUCTS SOLD AND SALE AREA:

All timber, except trees marked with a band of blue paint and trees bounded out by leave tree area tags; bounded by Timber Sale Boundary tags; Timber Type Change, bounded out by Right of Way tags and the C-3000 in Unit 1; Timber Sale Boundary Tags and Solleks Pit in Unit 2; Timber Sale Boundary Tags, C-3100, C-3000 and the C-3102 in Unit 3; Timber Sale Boundary Tags, Hoh-Clearwater Mainline and Timber Type Change in Unit 4;

All forest products above located on part(s) of Sections 10 and 11 all in Township 25 North, Range 11 West, Sections 35 all in Township 27 North, Range 12 West, W.M., containing 108 acres, more or less.

CERTIFICATION: This sale is certified under the Sustainable Forestry Initiative® program Standard (cert no: PwC-SFIFM-513)

ESTIMATED SALE VOLUMES AND QUALITY:

Table with columns: Species, Avg DBH, Ring Count, Total MBF, and MBF by Grade (1P, 2P, 3P, SM, 1S, 2S, 3S, 4S, UT). Rows include Hemlock, Douglas fir, Spruce, Red alder, Red cedar, and Sale Total.

MINIMUM BID: \$789,000.00

BID METHOD: Sealed Bids

PERFORMANCE SECURITY:

\$100,000.00

SALE TYPE: Lump Sum

EXPIRATION DATE: October 31, 2023

ALLOCATION: Export Restricted

BID DEPOSIT: \$78,900.00 or Bid Bond. Said deposit shall constitute an opening bid at the appraised price.

HARVEST METHOD: Ground - 33% and Cable - 67% - Rubber tire skidders will not be allowed unless skidding and rutting requirements can be met and a harvest plan is submitted and accepted. 30' equipment limitation zones on all typed waters.

ROADS: 23.15 stations of optional construction. 57.60 stations of optional prehaul maintenance. There is required rock source work referenced in 6-15 of the Road Plan.

ACREAGE DETERMINATION

CRUISE METHOD: Sale acreage was 100% GPS'd. Sale units were cruised using a variable plot sample.



TIMBER NOTICE OF SALE

FEES: \$53,805.00 is due on day of sale. \$9.00 per MBF is due upon removal. These are in addition to the bid price.

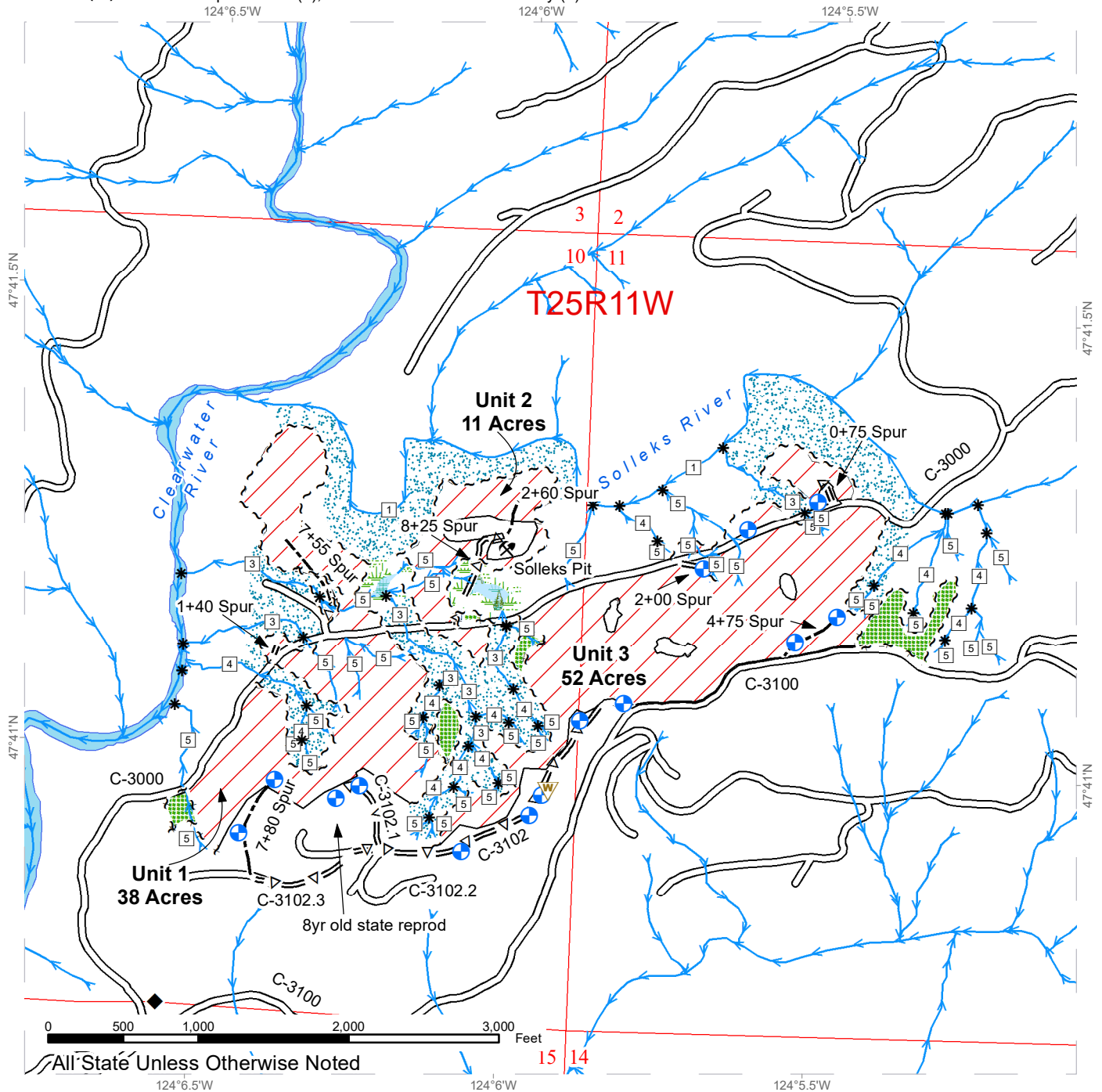
SPECIAL REMARKS: There is a locked gate on the South Winfield Pit access road - contact the Olympic Region Dispatch Center at 360-371-2811 to obtain an AA-1 key.

Purchaser shall provide a written Extreme Hazard Abatement Plan that meets the requirements of WAC 332-24 prior to beginning of logging operations in Unit 4.

TIMBER SALE MAP

SALE NAME: VEE ARE AITCH
AGREEMENT #: 30-100664
TOWNSHIP(S): T25R11W, T27R12W
TRUST(S): Capitol Grant (7), Common School and Indemnity (3)

REGION: Olympic Region
COUNTY(S): Jefferson
ELEVATION RGE: 360'-1040'



All State Unless Otherwise Noted

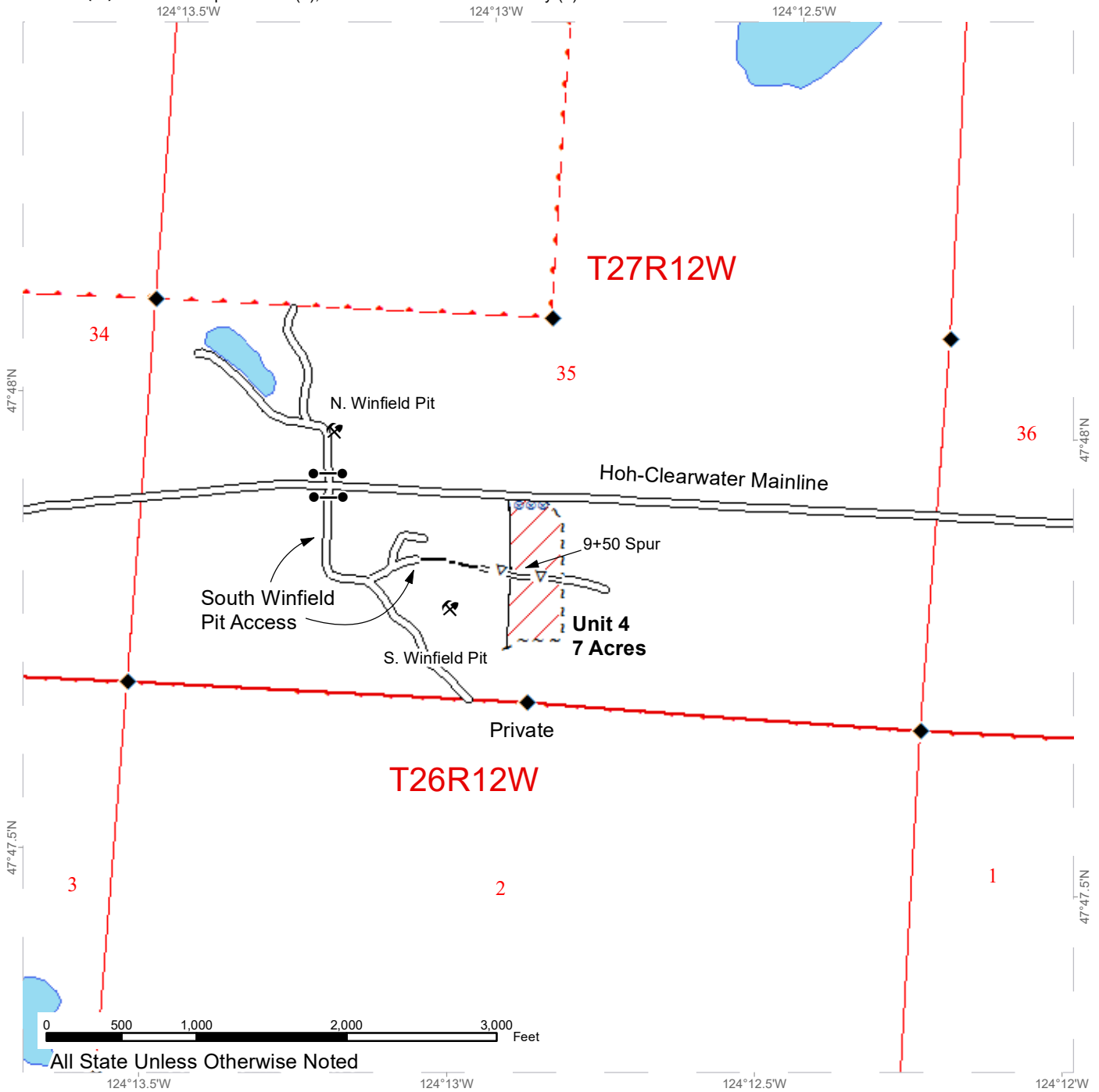
* Stream Type Break	=Δ= Optional Pre-Haul Maintenance	Riparian Mgt Zone
□ Stream Type	--- Optional Construction	Forested Wetland
⊕ Landing - Proposed	~ ~ ~ Sale Boundary Tags	Wetland Mgt Zone
⚡ Rock Pit	~ ~ ~ Leave Tree Area Tags	Public Land Survey Townships
⚠ Waste Area	~ ~ ~ Right of Way Tags	Public Land Survey Sections
◆ Survey Monument	— Timber Type Change	DNR Managed Lands
→ Streams	/// Variable Retention Harvest	
— Existing Roads	Leave Tree Area	



TIMBER SALE MAP

SALE NAME: VEE ARE AITCH
AGREEMENT #: 30-100664
TOWNSHIP(S): T25R11W, T27R12W
TRUST(S): Capitol Grant (7), Common School and Indemnity (3)

REGION: Olympic Region
COUNTY(S): Jefferson
ELEVATION RGE: 360'-1040'



All State Unless Otherwise Noted

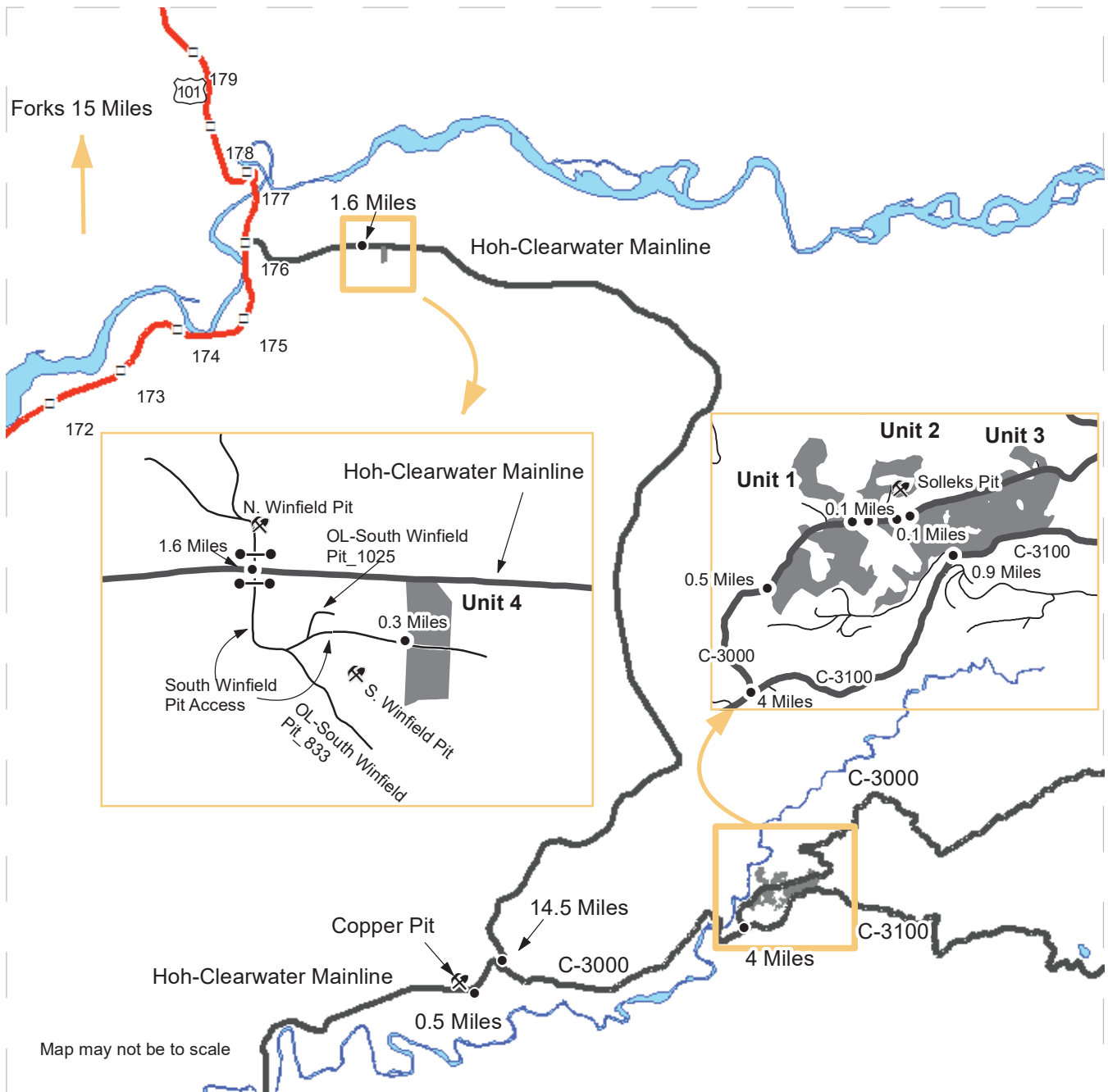
●—● Gate (<<AA-1>>)	— Timber Type Change
⛏ Rock Pit	▨ Variable Retention Harvest
◆ Survey Monument	⊗ Hazard Abatement
— Existing Roads	▭ Public Land Survey Townships
=Δ= Optional Pre-Haul Maintenance	▭ Public Land Survey Sections
--- Optional Construction	▭ DNR Managed Lands
~ ~ ~ Sale Boundary Tags	



DRIVING MAP

SALE NAME: VEE ARE AITCH
AGREEMENT#: 30-100664
TOWNSHIP(S): T25R11W, T27R12W
TRUST(S): Capitol Grant (7), Common School and Indemnity (3)

REGION: Olympic Region
COUNTY(S): Jefferson
ELEVATION RGE: 360'-1040'



- Distance Indicator
- ⚡ Rock Pit
- Gate (<<AA-1>>)
- Milepost Markers
- Sale Units
- Haul Routes
- Other Roads
- Open Water

DRIVING DIRECTIONS:

Unit 4/South Winfield Pit: From Forks, WA drive 15 miles South on Hwy 101. Turn left on the Hoh-Clearwater Mainline and continue for 1.6 miles. Turn right onto South Winfield Pit Access and continue for 0.3 miles.

Unit 1: From the intersection of the Hoh-Clearwater mainline and South Winfield Pit Access, continue on the Hoh-Clearwater mainline for 14.5 miles. Turn left on the C-3000 and continue for 4 miles. Stay left at the C-3000/C-3100 Intersection and continue for 0.5 miles.

Unit 2/Solleks Pit: From Unit 1, continue on the C-3000 for 0.1 miles.

Unit 3: From Unit 2, continue on the C-3000 for 0.1 mile. Alternatively, Turn right at the C-3000/C-3100 intersection and continue on the C-3100 for 0.9 miles.

Copper Pit: From the Hoh-Clearwater mainline and the C-3000 intersection, continue on the Hoh-Clearwater mainline for 0.5 miles.





TIMBER NOTICE OF SALE

SALE NAME: POINT BLANK

AGREEMENT NO: 30-100492

AUCTION: December 16, 2021 starting at 10:00 a.m., COUNTY: Lewis
Pacific Cascade Region Office, Castle Rock, WA

SALE LOCATION: Sale located approximately 16 miles west of Centralia

PRODUCTS SOLD AND SALE AREA:

All timber, except for leave trees bounded by yellow "Leave Tree Area" tags, individual leave trees marked with blue paint and all down timber existing 5 years prior to the day of sale, and areas of young reprod against mature timber bound by the following:

Unit 1, white "Timber Sale Boundary" tags, with pink "Timber Harvest Boundary" flagging, reprod and the L-2027 road.

Unit 2, white "Timber Sale Boundary" tags, with Pink "Timber Harvest Boundary" flagging, reprod and L-2020 road.

Unit 3, white "Timber Sale Boundary" tags, with pink "Timber Harvest Boundary" flagging, reprod and L-2000 and L-2020 roads.

Unit 4, white "Timber Sale Boundary" tags with Pink "Timber Harvest Boundary" flagging and reprod.

Unit 5, white "Timber Sale Boundary" tags, with pink "Timber Harvest Boundary" flagging and reprod.

Unit 6, orange "Right-of-Way" tags, with pink "Timber Harvest Boundary" flagging.

All forest products above located on part(s) of Sections 33 and 34 all in Township 15 North, Range 5 West, W.M., containing 82 acres, more or less.

CERTIFICATION: This sale is certified under the Sustainable Forestry Initiative® program Standard (cert no: PwC-SFIFM-513)

ESTIMATED SALE VOLUMES AND QUALITY:

Table with columns: Species, Avg DBH, Ring Count, Total MBF, and MBF by Grade (1P, 2P, 3P, SM, 1S, 2S, 3S, 4S, UT). Rows include Douglas fir, Hemlock, Red cedar, Red alder, and Sale Total.

MINIMUM BID: \$2,191,000.00 BID METHOD: Sealed Bids

PERFORMANCE SECURITY: \$100,000.00 SALE TYPE: Lump Sum

EXPIRATION DATE: October 31, 2023 ALLOCATION: Export Restricted



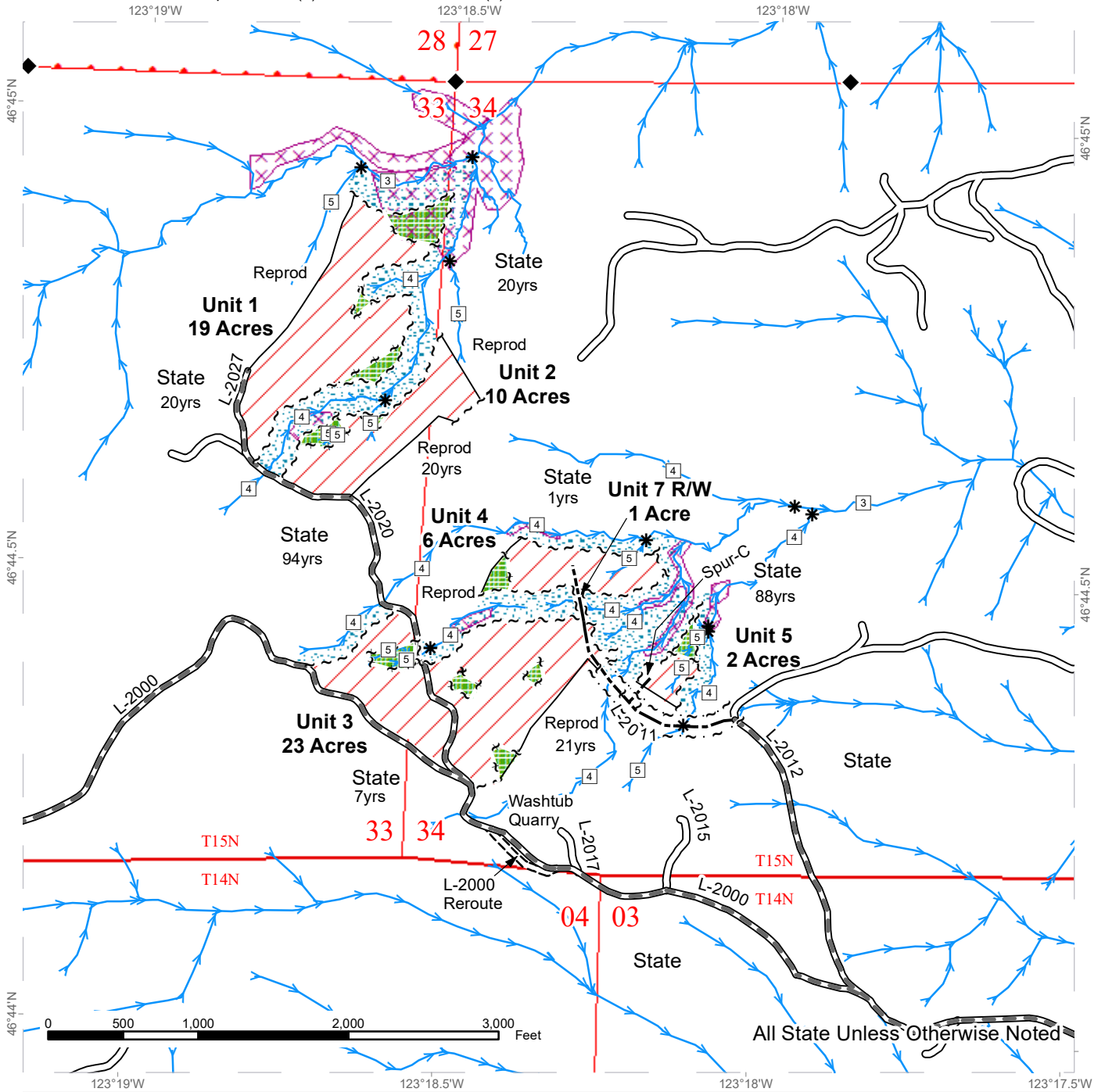
TIMBER NOTICE OF SALE

- BID DEPOSIT:** \$219,100.00 or Bid Bond. Said deposit shall constitute an opening bid at the appraised price.
- HARVEST METHOD:** Ground based equipment, Cable, and Cable-Assist. Harvest activities are estimated to be 70% ground based yarding and 30% uphill cable. Ground based harvesting equipment shall be restricted to sustained slopes of 45% and less during dry soil conditions. Self-leveling equipment is restricted to slopes less than 65%, cable assisted equipment is restricted to slopes less than 75%. See Clause H-140 for further harvesting requirements. Ground Based Yarding will not be permitted from October 1 to April 30 unless authorized in writing by the Contract Administrator.
- ROADS:** 5.00 stations of required construction. 43.60 stations of optional construction. 254.00 stations of required prehaul maintenance. 37.10 stations of abandonment, if built. Rock used in accordance with the quantities on the ROCK LIST may be obtained from the Washtub Quarry and existing Washtub Quarry Stock Pile (Sec 34 T15N R05 W W.M) Rock for construction and pre-haul maintenance used in accordance with the quantities on the ROCK LIST may be obtained from any commercial source at the Purchaser's expense subject to written approval from Contract Administrator. See contract Clause H-130 for more details. Road construction will not be permitted from November 1 to April 30 unless authorized in writing by the Contract Administrator. All road work will not be permitted from November 1 to April 30 unless authorized in writing by the Contract Administrator. The hauling of forest products will not be permitted from October 1 to April 30 unless authorized in writing by the Contract Administrator for the L-2011, L-2081 ext, Spur-A, Spur B, and Spur C roads.
- ACREAGE DETERMINATION**
- CRUISE METHOD:** The sale acres were determined by GPS. The sale area was cruised using a variable plot cruise method.
- FEES:** \$93,381.00 is due on day of sale. \$9.00 per MBF is due upon removal. These are in addition to the bid price.
- SPECIAL REMARKS:** PCP 1-1 gate keys may be obtained from the Pacific Cascade Region office.

TIMBER SALE MAP

SALE NAME: Point Blank
AGREEMENT #: 30-100942
TOWNSHIP(S): T15R5W
TRUST(S): Capitol Grant (7), State Forest Transfer (1)

REGION: Pacific Cascade Region
COUNTY(S): Lewis
ELEVATION RGE: 779-1748



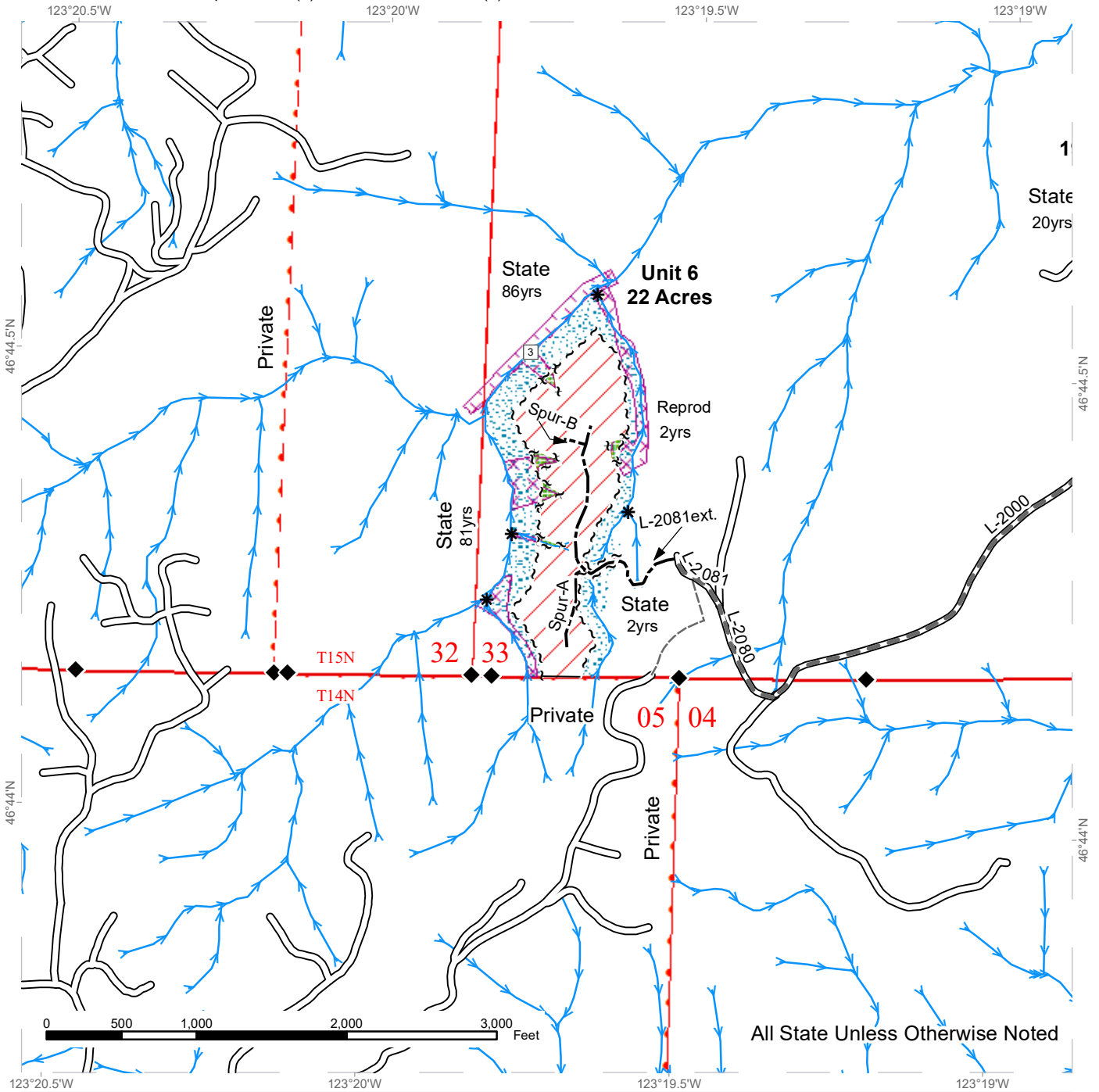
Sale Area	Existing Roads	Streams
Leave Tree Area	Required Pre-Haul Maintenance	Stream Type
Riparian Mgt Zone	Required Construction	Stream Type Break
Potentially Unstable Slopes	Optional Construction	Survey Monument



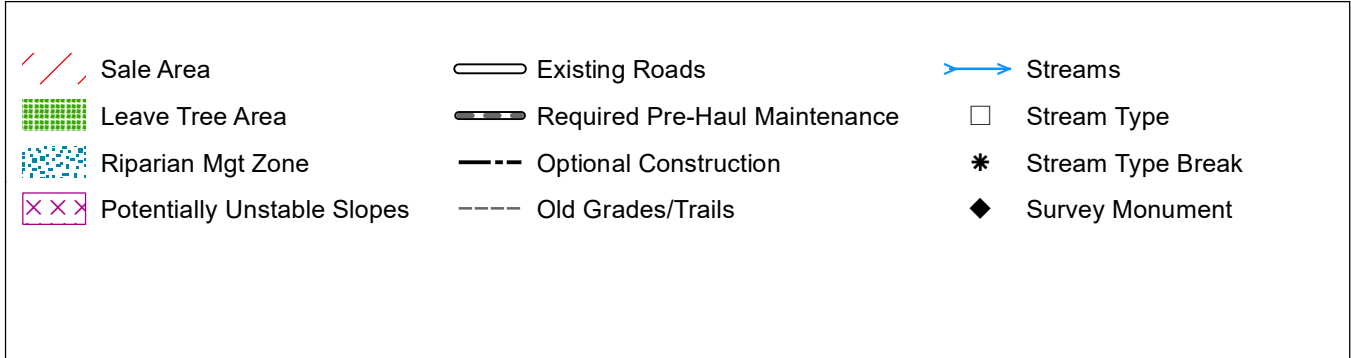
TIMBER SALE MAP

SALE NAME: Point Blank
AGREEMENT #: 30-100942
TOWNSHIP(S): T15R5W
TRUST(S): Capitol Grant (7), State Forest Transfer (1)

REGION: Pacific Cascade Region
COUNTY(S): Lewis
ELEVATION RGE: 779-1748



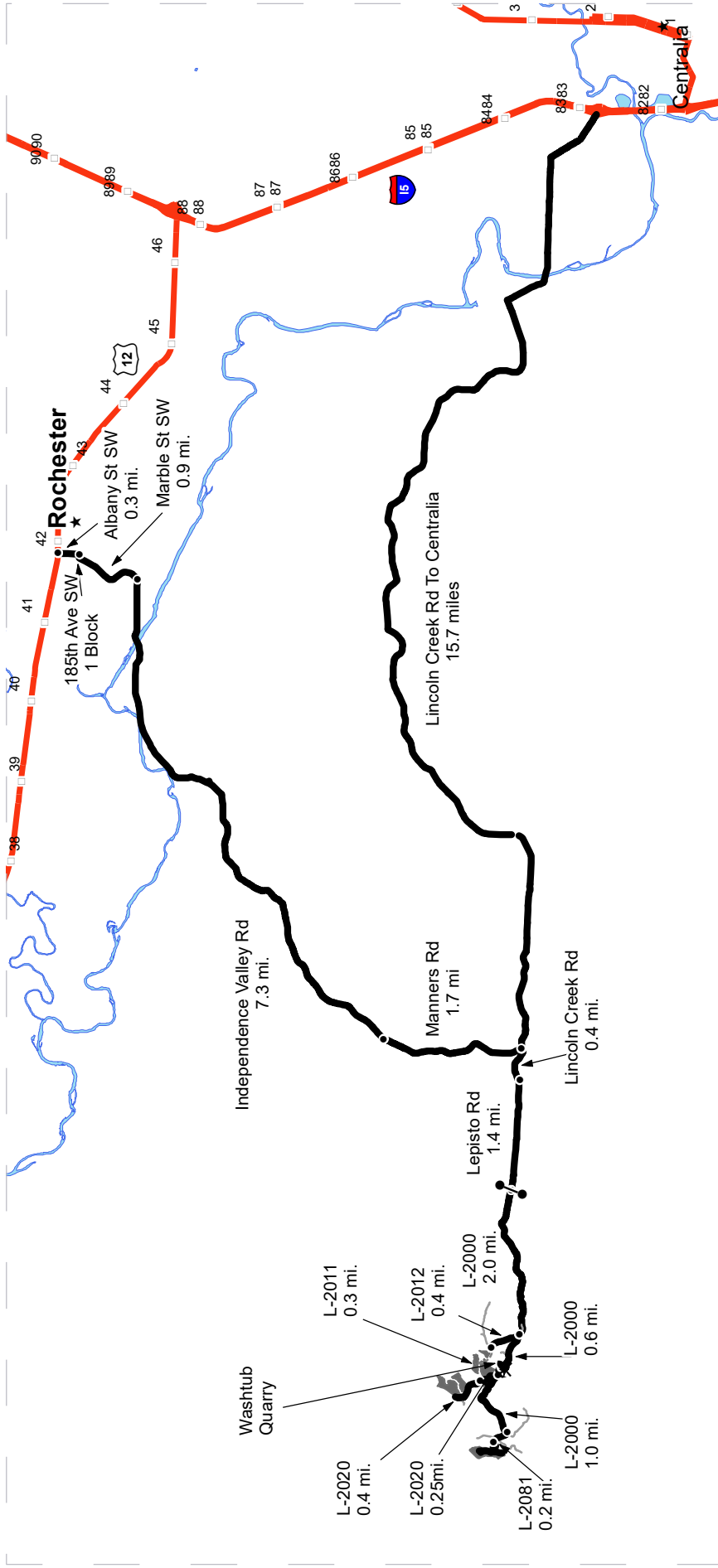
All State Unless Otherwise Noted



DRIVING MAP

SALE NAME: Point Blank
AGREEMENT#: 30-100942
TOWNSHIP(S): T15R5W
TRUST(S): Capitol Grant (7), State Forest Transfer (1)

Pacific Cascade Region
 Lewis
COUNTY(S):
ELEVATION RGE: 779-1748



Map may not be to scale

- Timber Sale Unit
- Haul Route
- Other Road
- View Only Route
- Highway
- Distance Indicator
- Gate (PCP 1-1)
- Rock Pit
- Town

DRIVING DIRECTIONS:

From Rochester, drive south on Albany St for 0.3 miles to 185th Ave SW. Turn right onto 185th and follow for one block to Marble St. Turn left onto Marble St and follow for 0.9 miles to Independence Valley road. Turn right onto Independence Valley road and follow for 7.3 miles, this turns into Manners road. Follow Manners road for 1.7 miles to Lincoln Creek road. Turn right onto Lincoln Creek road and follow for 0.4 miles to Lepisto road. Turn right onto Lepisto road and follow to the end. From the end of Lepisto road, veer right and go through the gate onto the L-2000. Continue on the L-2000 for 2.0 miles to the L-2012. Turn right on L-2012 and follow for 0.4 miles to the Flagged line for the L-2011. Follow the L-2011 Flagged line for 0.4 miles to access units 3,4 & 5. Continue on the L-2000 or 0.6 miles to the L-2020 Turn right on the L-2020 for 0.25 miles to accesses Units 1,2 &3. Continue on the L-2000 for 1.0 mile to the L-2081. Turn right on the L-2081 for 0.2 miles to the Flagged line that accesses Unit 6.



TIMBER NOTICE OF SALE

SALE NAME: CAPRA

AGREEMENT NO: 30-100995

AUCTION: December 14, 2021 starting at 10:00 a.m., **COUNTY:** Thurston
South Puget Sound Region Office, Enumclaw, WA

SALE LOCATION: Sale located approximately 10 miles west of Olympia.

**PRODUCTS SOLD
AND SALE AREA:**

All timber, except leave trees bounded out by yellow leave tree area tags, snags, and down timber existing more than 5 years from the day of sale, bounded by the following: white Timber Sale Boundary tags, the B-4000 and KC-3000 roads, timber type change marked with pink flagging, and the BPA powerline right of way marked with pink flagging in Unit #1; white Timber Sale Boundary tags, the KC-2100, B-Line, and B-4010 roads, and the BPA powerline right of way marked with pink flagging in Unit #2.

All forest products above located on part(s) of Sections 26 and 27 all in Township 18 North, Range 4 West, W.M., containing 109 acres, more or less.

CERTIFICATION: This sale is certified under the Sustainable Forestry Initiative® program Standard (cert no: PwC-SFIFM-513)

ESTIMATED SALE VOLUMES AND QUALITY:

Species	Avg DBH	Ring Count	Total MBF	MBF by Grade								
				1P	2P	3P	SM	1S	2S	3S	4S	UT
Douglas fir	21.8	8	2,944						2,178	617	127	22
Hemlock	18.7	8	1,948						1,348	442	158	
Spruce	23.6		85						58	24	3	
Red alder	13.9		64						8	12	44	
Red cedar	18.5		29							22	7	
Sale Total			5,070									

MINIMUM BID: \$1,905,000.00 **BID METHOD:** Sealed Bids

PERFORMANCE SECURITY: \$100,000.00 **SALE TYPE:** Lump Sum

EXPIRATION DATE: October 31, 2023 **ALLOCATION:** Export Restricted

BID DEPOSIT: \$190,500.00 or Bid Bond. Said deposit shall constitute an opening bid at the appraised price.

HARVEST METHOD: Harvesting activities are estimated to be 70 percent cable and 30 percent ground based harvest. Cable and cable-tethered equipment allowed on all slopes. Ground based equipment is limited to tracked equipment, with non-tethered self-leveling equipment limited to sustained slopes of 55 percent or less, all other tracked equipment limited to sustained slopes that are 45 percent or less. Rubber tired skidders not allowed, except 6-wheeled rubber tired skidders with over-the-tire tracks spanning both sets of rear tires are allowed in both units on sustained slopes that are 45 percent or less. Yarding may be restricted during wet weather if rutting becomes excessive, per clause H-017.



TIMBER NOTICE OF SALE

ROADS: 639.04 stations of required prehaul maintenance. Purchaser maintenance on the B-Line within Unit #2, B-4010, KC-2100, KC-3000, KC-5000, and BPA-2695 within Unit #1. Designated maintenance on all other roads used.

Rock for this proposal may be obtained from the State owned Five Forks Quarry and Stinkfoot Quarry at no cost to the Purchaser or any commercial rock source at the Purchaser's expense.

Any construction will not be permitted from November 1 to April 30, nor on weekends or State recognized holidays, unless authority to do so is granted, in writing, by the Contract Administrator. If permission is granted to operate from November 1 to April 30, a maintenance plan is required per Road Plan clause 1-26.

The hauling of forest products will not be permitted from November 1 to April 30, nor on weekends or State recognized holidays, unless authorized in writing by the Contract Administrator. If permission is granted to operate from November 1 to April 30, preventative measures may be required to protect water, soil, roads and other forest assets.

ACREAGE DETERMINATION

CRUISE METHOD: Acreage was determined by traversing boundaries by GPS in both units, and length times width for existing roads. GPS data files are available at DNR's website for timber sale auction packets. See cruise narrative for cruise method.

FEES: \$86,190.00 is due on day of sale. \$9.00 per MBF is due upon removal. These are in addition to the bid price.

SPECIAL REMARKS: See map for gate locations. Gate keys may be obtained by contacting the South Puget Sound Region office at (360) 825-1631 or by contacting the Tumwater work center at (360) 481-9597.

This sale contains high quality Douglas-fir.

Purchaser shall cut all hardwood stems 2 inches DBH or greater, or 6 feet tall or greater, within the harvest units, leaving a stump no more than 12 inches in height.

Any timber harvest within two tree lengths of the BPA power line right-of-way will require at least one week advanced notice to the local BPA Operation and Maintenance District. The contact person is Lee Webb, 360-791-3838.

The B-Line, within harvest units, is to be left open at the end of each day. Blocking for short periods will be allowed during operational periods.

There are trees present in parts of the harvest Units that have a single blue band of paint from previous harvest activities. These trees are to be cut. All leave trees associated with this sale are in clumps identified by yellow "Leave Tree Area" tags and pink flagging.

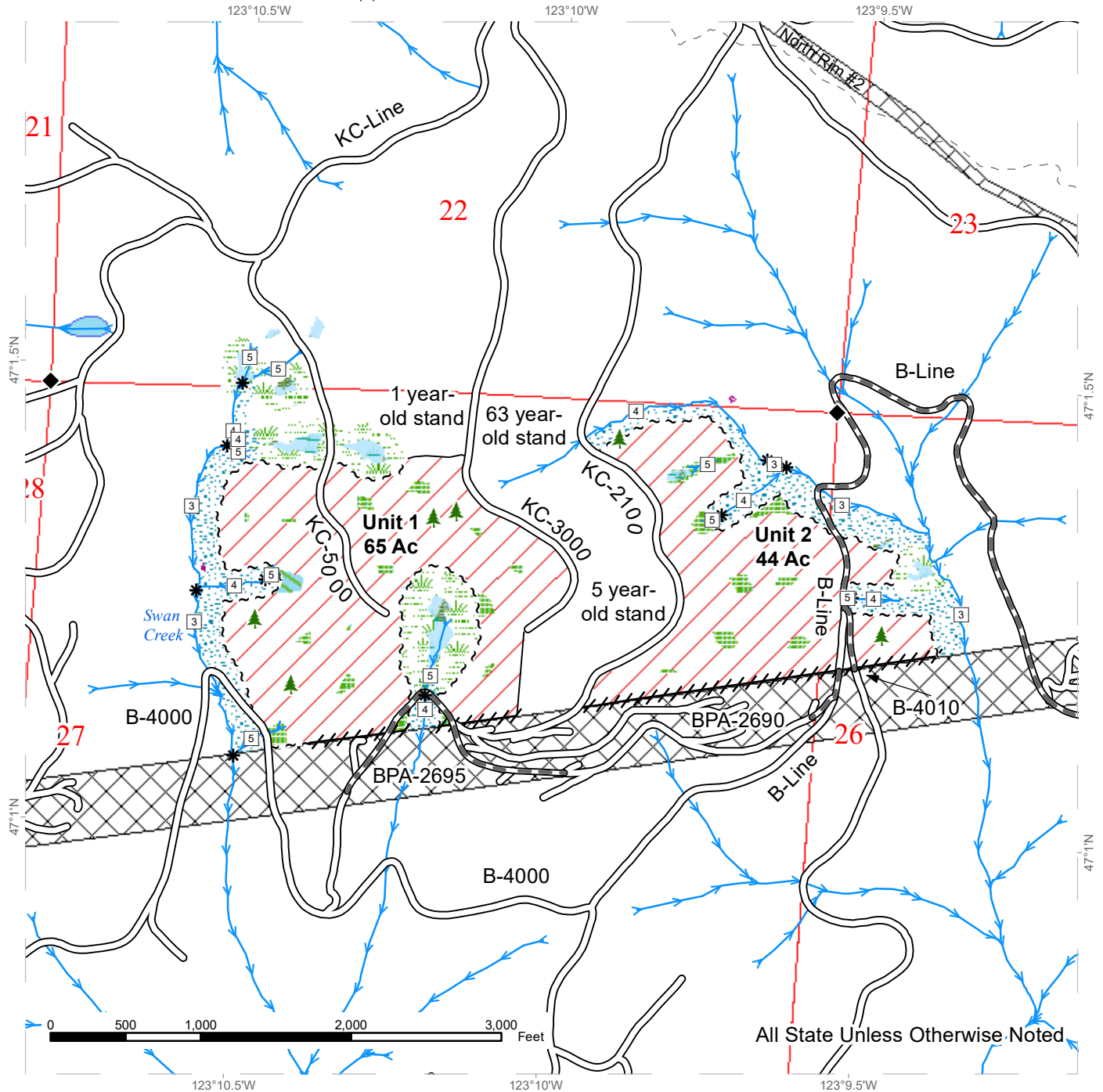
Purchaser shall abate dust on the B-Line from station 638+35 to 647+00 per Contract Administrator discretion.

For the safety of the public, please remove from roads and trails all string from string boxes used during appraising or cruising this sale.

TIMBER SALE MAP

SALE NAME: CAPRA
AGREEMENT #: 30-100995
TOWNSHIP(S): T18R4W
TRUST(S): State Forest Transfer (1)

REGION: South Puget Sound Region
COUNTY(S): Thurston
ELEVATION RGE: 680-1960



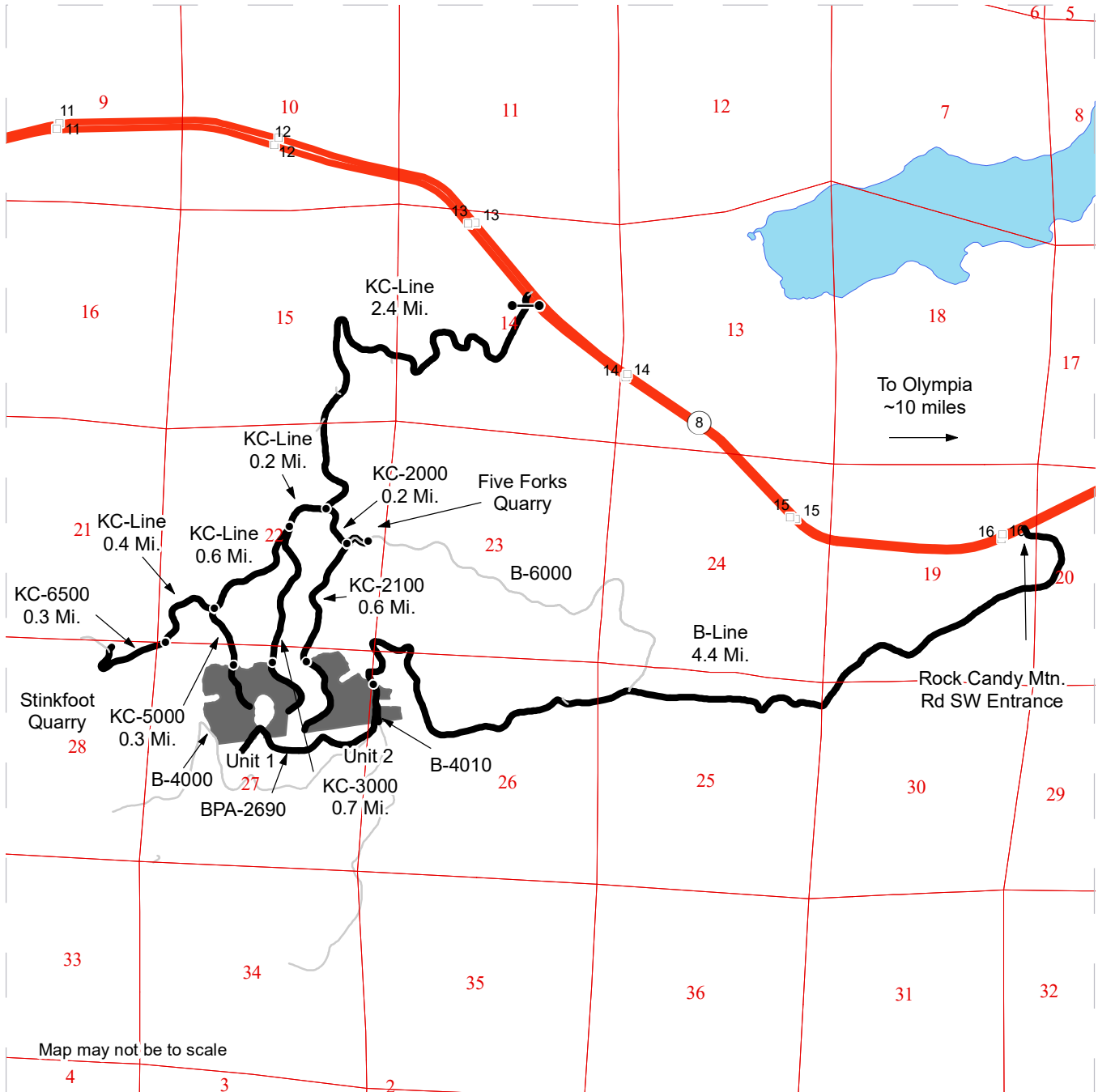
All State Unless Otherwise Noted

Variable Retention Harvest	Existing Roads	Streams
Forested Wetland	Required Pre-Haul Maintenance	Stream Type
Leave Tree Area	Sale Boundary Tags	Stream Type Break
Riparian Mgt Zone	Flag Line	Survey Monument
Wetland Mgt Zone	Timber Type Change	Leave Tree Area <1/4-acre
Tailhold Restriction Area		
Utility Right-of-Way		
Non-Tradeable Leave Tree Area		
Recreation Trails		

DRIVING MAP

SALE NAME: CAPRA
AGREEMENT#: 30-100995
TOWNSHIP(S): T18R4W
TRUST(S): State Forest Transfer (1)

REGION: South Puget Sound Region
COUNTY(S): Thurston
ELEVATION RGE: 680-1960



Map may not be to scale

	Timber Sale Unit
	Haul Route
	Other Road
	Milepost Markers
	Distance Indicator
	Gate (Master Lock 957)

DRIVING DIRECTIONS:

From US Highway 8 (milepost 13.5) turn south onto the KC-Line and follow for 2.4 miles and turn east onto the KC-2000 for 0.2 miles. Turn south on the KC-2100 for 0.6 miles to Unit 2.

Unit 1: From the KC-Line/KC-2000 junction, continue west on the KC-Line for 0.2 miles. Turn south on the KC-3000 for 0.7 miles.

Five Forks Quarry: From the KC-2000/KC-2100 junction, continue east on the B-6000 for 0.1 miles to the Five Forks Quarry.

Stinkfoot Quarry: From the KC-Line/KC-5000 junction, continue west on KC-Line for an additional 0.4 miles. Turn west onto the KC-6500 for 0.3 miles.





TIMBER NOTICE OF SALE

SALE NAME: TWO YEARS OUT

AGREEMENT NO: 30-102059

AUCTION: December 16, 2021 starting at 10:00 a.m., COUNTY: Wahkiakum Pacific Cascade Region Office, Castle Rock, WA

SALE LOCATION: Sale located approximately 35 miles Northwest of Longview

PRODUCTS SOLD AND SALE AREA: All timber, except leave trees marked with blue paint, all down timber existing 5 years prior to the day of sale, and snags bound by the following;

Unit 1, white "Timber Sale" tags, pink flagging E-1000, E-1180 and E-1185 roads.

Unit 2, white "Timber Sale" tags pink flagging.

Unit 3, white "Timber Sale" tags, pink flagging, reprod and E-910, E-920 roads.

Unit 4, white "Timber Sale" tags pink flagging.

All forest products above located on part(s) of Sections 7, 18 and 19 all in Township 10 North, Range 4 West, W.M., containing 166 acres, more or less.

CERTIFICATION: This sale is certified under the Sustainable Forestry Initiative® program Standard (cert no: PwC-SFIFM-513)

ESTIMATED SALE VOLUMES AND QUALITY:

Table with columns: Species, Avg DBH, Ring Count, Total MBF, and MBF by Grade (1P, 2P, 3P, SM, 1S, 2S, 3S, 4S, UT). Rows include Douglas fir, Hemlock, Red alder, Spruce, and Sale Total.

MINIMUM BID: \$2,546,000.00 BID METHOD: Sealed Bids

PERFORMANCE SECURITY: \$100,000.00 SALE TYPE: Lump Sum

EXPIRATION DATE: October 31, 2023 ALLOCATION: Export Restricted

BID DEPOSIT: \$254,600.00 or Bid Bond. Said deposit shall constitute an opening bid at the appraised price.

HARVEST METHOD: Ground based equipment, cable systems, and cable assist are allowed for harvest operations. This sale is estimated to be 40% ground based harvest systems and 60% cable/cable assist harvest systems. Ground based yarding equipment will not be permitted on sustained slopes over 45%. Self-leveling ground based yarding equipment will not be permitted sustained slopes over 45%. Cable assist equipment will not be permitted on sustained slopes over 70%. For additional harvesting restrictions see Clause H-140 in the contract.



TIMBER NOTICE OF SALE

ROADS: 43.25 stations of optional construction. 672.04 stations of required prehaul maintenance. 3.00 stations of abandonment. Rock used in accordance with the quantities on the ROCK LIST may be obtained from the Incline Pit (Sec 30, 31 T10N R4W). Pit development is required as described in the road plan and Incline Pit Development Plan. See Road Plan 6-10 and Pit Development Plan for additional information. Rock used in accordance with the quantities on the ROCK LIST may be obtained from any commercial source at the Purchaser's expense. Rock sources are subject to written approval by the Contract Administrator before their use. Purchaser shall abandon E-1181 from station 4+83 to 7+83 and construct earthen barricades at stations 4+83 and 7+83. See Road Plan 9-1 and 9-21 for additional information. Road construction will not be permitted from October 1 to April 30 unless authorized in writing by the Contract Administrator. Abandonment, construction and Pre-haul maintenance will be restricted from October 1 to April 30. See Road Plan 1-25 for additional information. The hauling of forest products will not be permitted from September 1 to May 31 unless authorized in writing by the Contract Administrator.

ACREAGE DETERMINATION

CRUISE METHOD: The sale acres were determined by GPS delineation. Cruise was completed using variable plot cruise methods.

FEES: In addition to bid price, a fee of \$12,759.78 to Sierra Pacific Industries for the Road Use Permit between Sierra Pacific Industries and the State, Dated 09/05/2021, is due 30 days from day of sale. For more information see Road Use Permit. \$131,172.00 is due on day of sale. \$9.00 per MBF is due upon removal. These are in addition to the bid price.

SPECIAL REMARKS: This sale was designed with a minimum tower height of 75 feet on all cable settings in Units 2, 3 and 4.

Gate on E-1180 at station 12+35 shall be kept closed and locked except during periods of haul. See Road Plan 7-70 for additional information.

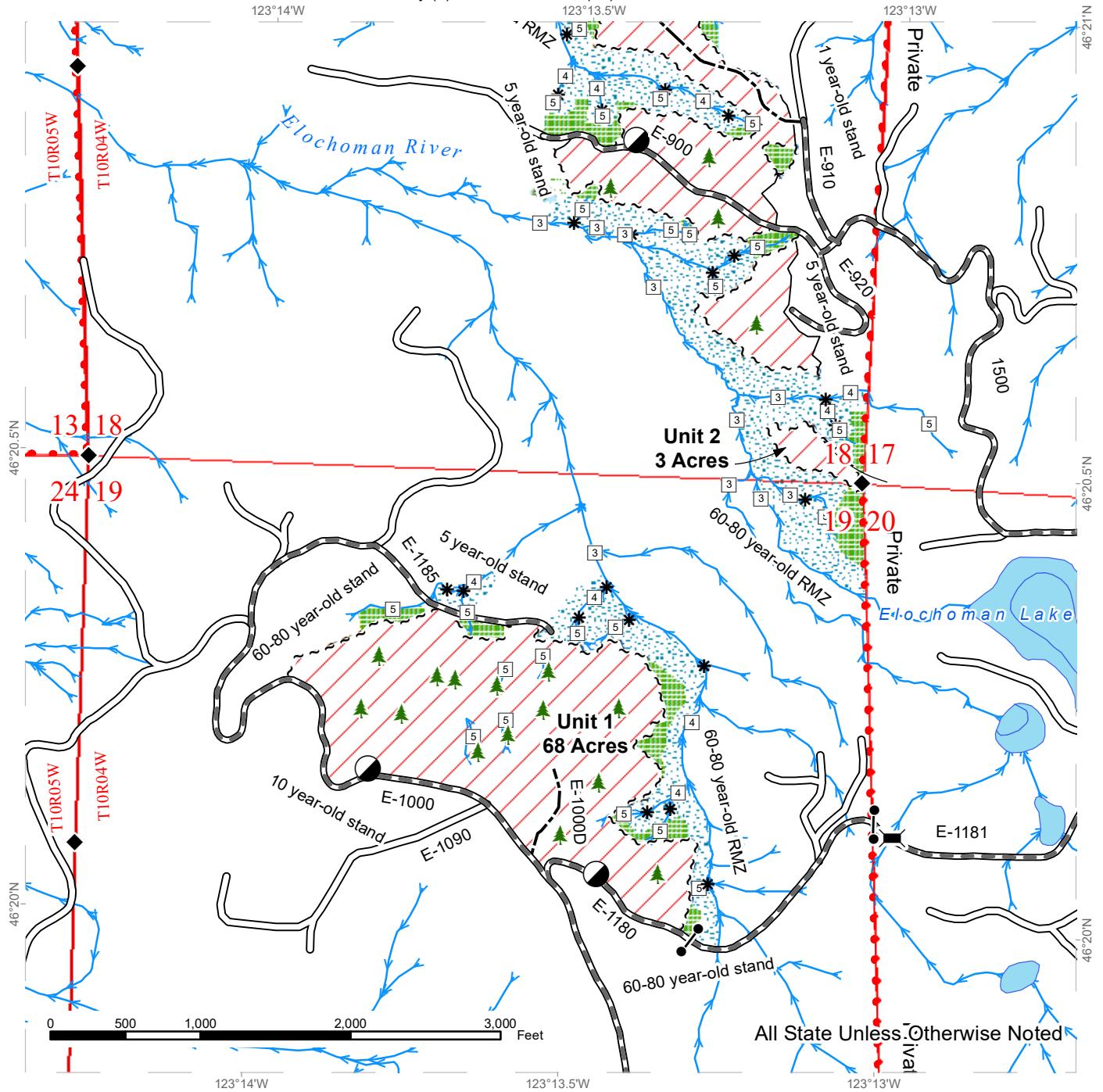
Gate on E-1181 at station 5+15 shall be kept closed and locked except for passing vehicles. See Road Plan 7-71 for additional information.

PCP 1-1 gate keys may be obtained from the Pacific Cascade Region office.

TIMBER SALE MAP

SALE NAME: TWO YEARS OUT
AGREEMENT #: 30-102059
TOWNSHIP(S): T10R4W
TRUST(S): Common School and Indemnity (3), Scientific School (10)

REGION: Pacific Cascade Region
COUNTY(S): Wahkiakum
ELEVATION RGE: 640-1680



All State Unless Otherwise Noted

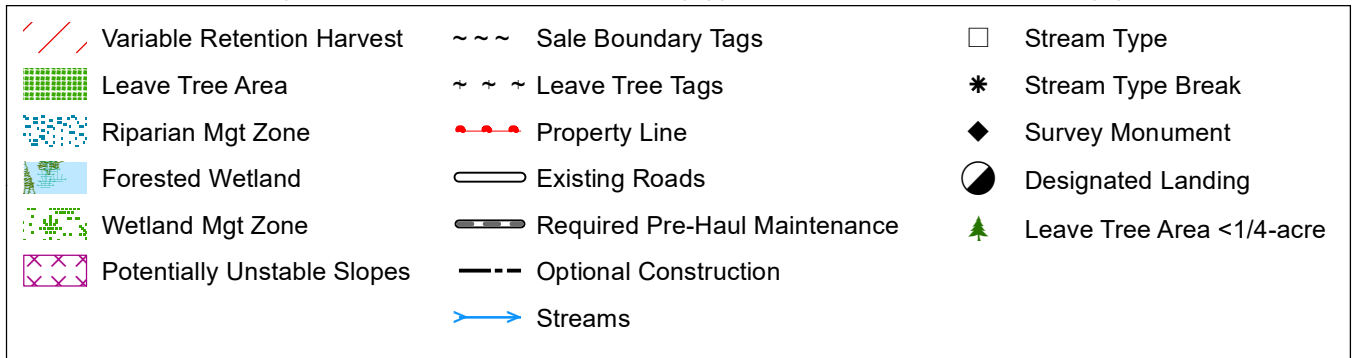
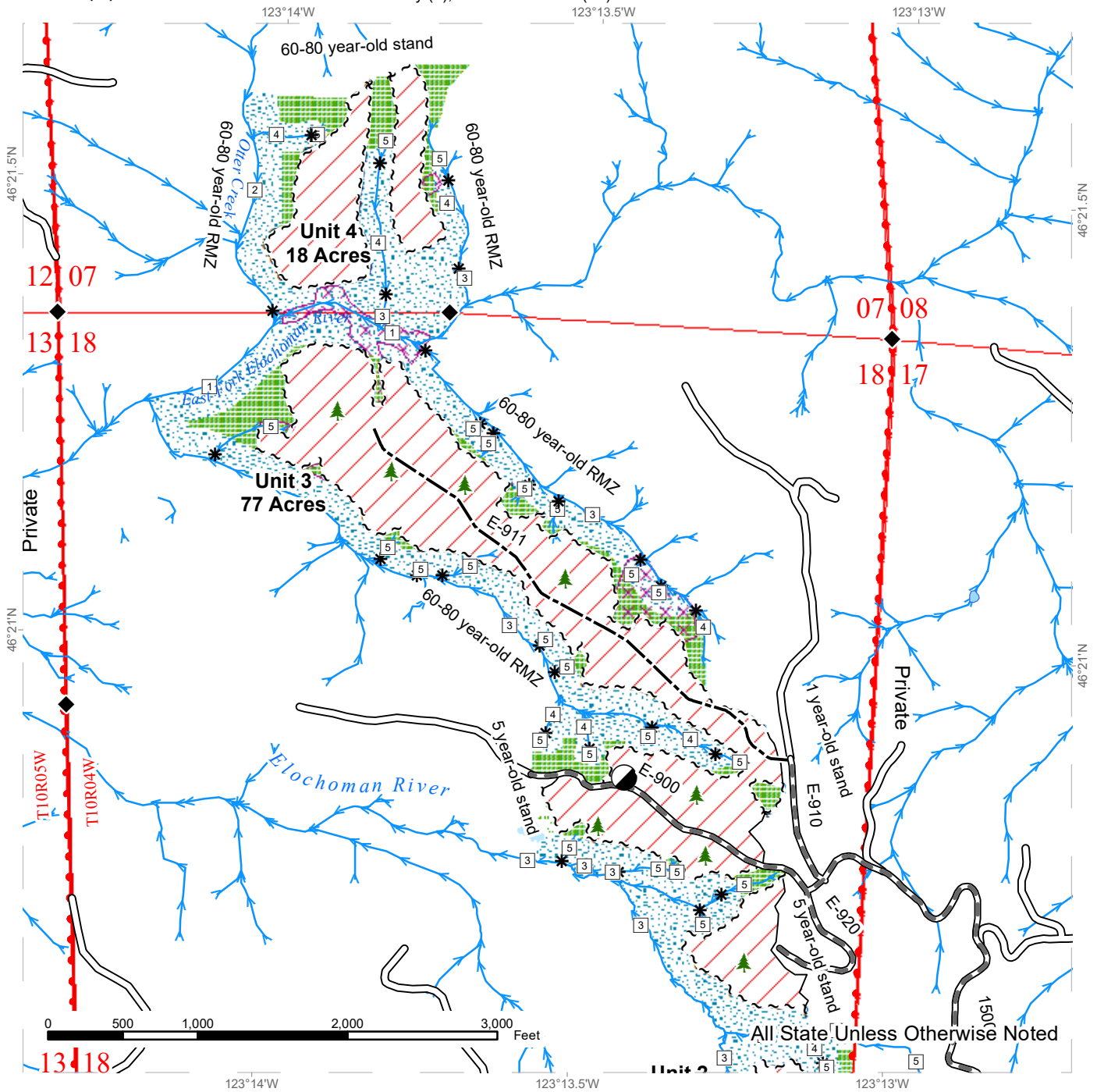
	Variable Retention Harvest		Sale Boundary Tags		Stream Type
	Leave Tree Area		Leave Tree Tags		Stream Type Break
	Riparian Mgt Zone		Property Line		Survey Monument
	Forested Wetland		Existing Roads		Bridge
	Wetland Mgt Zone		Required Pre-Haul Maintenance		Designated Landing
			Optional Construction		Gate (PCP 1-1)
			Streams		Leave Tree Area <1/4-acre



TIMBER SALE MAP

SALE NAME: TWO YEARS OUT
AGREEMENT #: 30-102059
TOWNSHIP(S): T10R4W
TRUST(S): Common School and Indemnity (3), Scientific School (10)

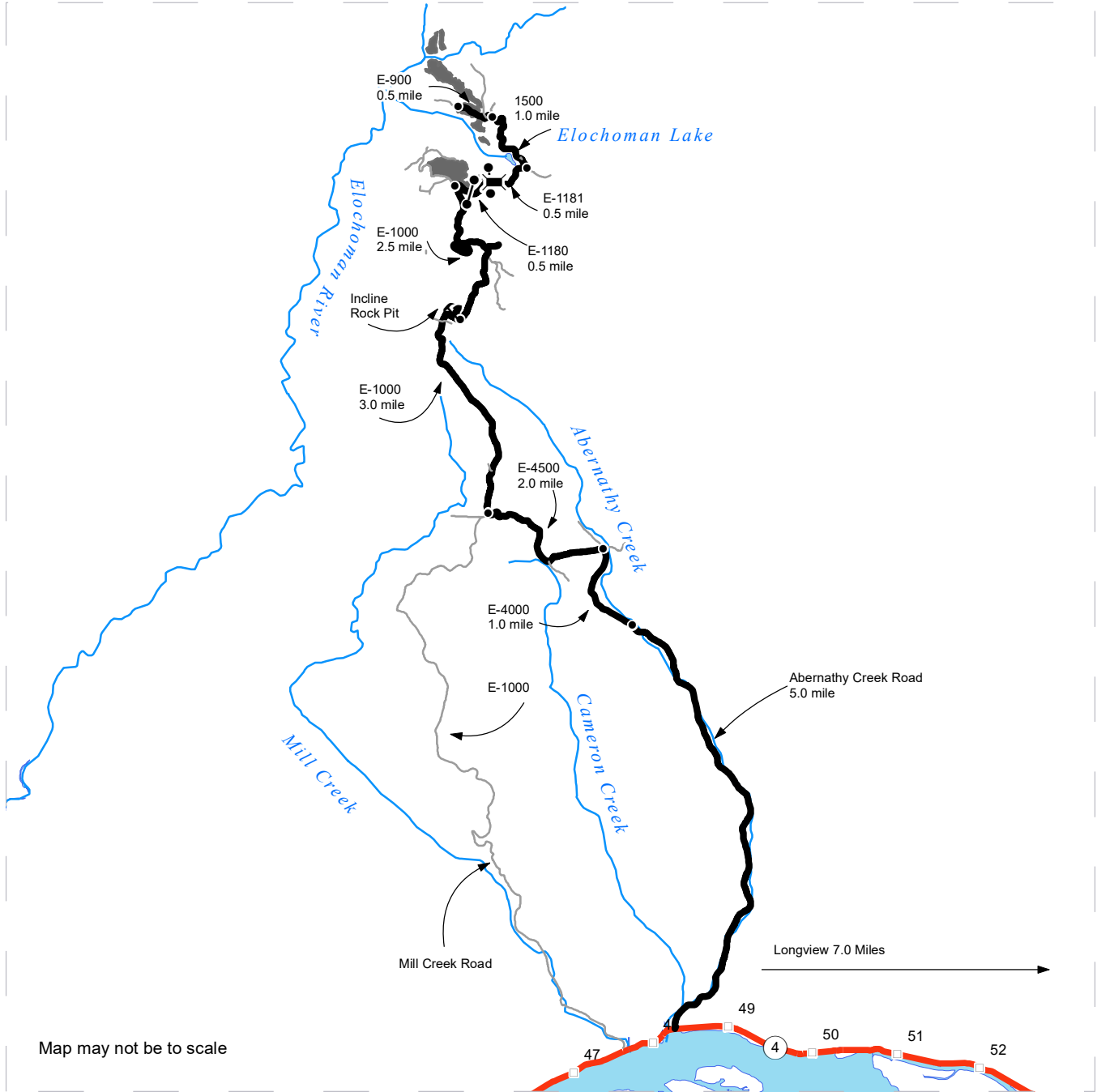
REGION: Pacific Cascade Region
COUNTY(S): Wahkiakum
ELEVATION RGE: 640-1680



DRIVING MAP

SALE NAME: TWO YEARS OUT
AGREEMENT#: None
TOWNSHIP(S): T10R4W
TRUST(S): Common School and Indemnity (3), Scientific School (10)

REGION: Pacific Cascade Region
COUNTY(S): Wahkiakum
ELEVATION RGE: 640-1680



Map may not be to scale

- Timber Sale Unit
- Haul Route
- Other Road
- Milepost Markers
- Bridge
- Distance Indicator
- Gate (PCP1-1)
- Rock Pit

DRIVING DIRECTIONS:

General Access: From State Highway 4 turn north at mile post 48 on Abernathy Creek Road follow for 5.0 miles, to where Abernathy Creek Road merges into the E-4000.
Incline Rock Pit: Follow E-4000 for 1.0 miles, turn left onto E-4500 follow for 2.0 miles. The E-4500 merges into the E-1000 at shoe fly. Continue north on the E-1000 for 3.0 miles. the Incline Rock Pit is located at the top of a steep hill on the left.
Unit 1: From the Incline Rock Pit continue on the E-1000 for 2.5 miles to the junction of the E-1180. To access Unit 1 park at the junction and the timber to the north of the E-1000 and the west of the E-1180 is Unit 1.
Units 2,3 and 4: From Unit 1, continue on the E-1180 for 0.5 miles (passing through two gates). The E-1180 merges into the E-1181 at the property line continue on the 1181 for 0.5 miles, and turn left onto the 1500. Follow the 1500 for 1.0 mile, turn left onto the E-900 follow for 0.5 miles to enter Unit 3. Unit 2 is accessed by walking to east of Unit 3 across a Type 4 Stream.
Unit 4 is accessed by walking to the northwest of Unit 3 across the East Fork of the Elochoman River.



**State of Washington
Department of Natural Resources**

SEALED BID FORM

Sale Name _____ Agreement Number _____

_____ hereby submits the following bid for timber.
(Print full, legal company name)

(Street address, City, State, Zip Code)

(Phone Number)

Lump Sum Bid (Not Including Fees) \$ _____ **For Total Sale**

Weight Scale Sale Bid (Not Including Fees) \$ _____ / **Ton**

Scribner Scale Sale Bid (Not Including Fees) \$ _____ / **MBF For Biddable Species**

BID DEPOSIT

Bid Deposit Amount: \$ _____

Bid Deposit Type:

- Cash, certified check, cashiers check, or money order
 Per Sale Bid Bond
 Statewide Bid Bond, Number _____

Within 30 days of confirmation date the successful bidder agrees to furnish Performance Security acceptable to the State in the amount specified on the Notice of Sale. Performance Security must guarantee performance of all provisions of the contract and payment of any damages caused by operations under the contract or resulting from the successful bidders noncompliance with any rule or law.

Bidder's Warranty and Bid Signature

By signing and submitting this bid as an offer to purchase forest products from the State, the Bidder hereby warrants to the State that they have had an opportunity to fully inspect the sale area and the forest products being sold. Bidder further warrants to the State that they enter this bid based upon their own judgments of the value of the forest products, formed after their own examination and inspection of both the timber sale area and the forest products being sold. Bidder also warrants to the State that they enter this bid without any reliance upon the volume estimates, acreage, appraisals, pre-bid documentation, or any other representation by the Washington State Department of Natural Resources.

_____ Date _____
(Signature of Authorized Representative submitting this bid)

(Print name and title of Authorized Representative submitting this bid)

Note: all sales are subject to confirmation by the Commissioner of Public Lands (Refer 79.15.120)

Instructions For Completing Sealed Bid Form

All bids submitted for the purchase of forest products being sold by the Washington State Department of Natural Resources must have an original signature on behalf of the person or entity submitting the bid, and must be on the form provided in this booklet or a photocopy thereof. The DNR will not accept bids that are not signed, and will not accept bids that are not on the current, approved bid form. All appropriate blanks on bid form must be completed including the bid bond number if the bidder is relying upon a bid bond for bid deposit.

For more specific information, contact the appropriate region office.

In-Person Bids

- A. Sealed bids must be in auction box before 10:00 a.m. on the day of auction at the location specified in the Timber Notice of Sale.
 - B. Sealed bids must be submitted in an envelope with the name of the sale, the bidder's name and the contract number clearly written on the outside of the envelope. The full legal name and business address of the bidder must be inserted where indicated on the form, and must be on the bid bond and timber sale contract. The bid form must be signed by an authorized representative. When a bidder has more than one person authorized to bid, documentation of those persons with signature authority for bidding must accompany the bid or be on file at the region office. Sealed bid envelopes are available at all region offices. One bid per envelope.
 - C. Sealed bid envelopes **must** contain a completed bid form and a bid deposit.
 - D. Sealed bid envelopes **may** contain a check for the Initial Deposit amount and a check for fees.
-

Mailed Bids

- A. Bids that are mailed are required to have printed on the outside: "DO NOT OPEN UNTIL SALE DATE. SEALED BID ENCLOSED". The sealed bid envelope(s) will be enclosed inside the mailed-in envelope. Mailed bids must be submitted in an envelope with the name of the sale, the bidder's name and the agreement number clearly written on the outside of the envelope. The full legal name and business address of the bidder must be inserted where indicated on the form, and must be the same on the bid bond and timber sale contract. The Sealed Bid Form must be signed by an authorized representative. When a bidder has more than one person authorized to bid, documentation of those persons with signature authority for bidding must accompany the bid or be on file at the region office. Mail-in envelopes are available at all region offices. One bid per mailed-in envelope.
 - B. Bids that are mailed will be accepted up to 4:30 p.m. the last business day before the auction by the region office in which the sale is located. Bidders assume the risk for the method of delivery. The DNR assumes no responsibility for any delays caused by any delivery service.
 - C. Sealed bid envelopes **must** contain a completed bid form and a bid deposit.
 - D. Sealed bid envelopes **may** contain a check for the Initial Deposit amount and a check for fees.
-

Initial Deposit:

Lump Sum Sales - Initial Deposit must equal 10% of the total bid submitted.
(25% if the bidder is a defaulter as defined under WAC 332-140-300)

Weight Scale Sales - Initial Deposit must equal 10% of the bid per ton multiplied by the total sale estimated tonnage. (25% if the bidder is a defaulter as defined under WAC 332-140-300)

Scribner MBF Scale Sales - Initial Deposit must equal 10% of the bid per MBF multiplied by the total sale MBF. (25% if the bidder is a defaulter as defined under WAC 332-140-300)

**State of Washington
Department of Natural resources**

STATEWIDE BID BOND

Bond Number _____

_____ of _____,
(Principal's Name) (City, State)

hereinafter called PRINCIPAL, and _____ hereinafter called
SURETY,

a corporation organized under the laws of the State of _____, and authorized to transact surety business in the State of Washington, as SURETY, are held and firmly bound jointly and severally to the State of Washington, Department of Natural Resources, hereinafter called the STATE, in the sum of \$150,000.00 Dollars, lawful money of the United States of America. The PRINCIPAL binds itself, its heirs, executors, administrators, successors, and assigns, and the SURETY binds itself, its successors, and assigns, all jointly and severally.

This bond shall be governed by the laws of the State of Washington. In the event of a lawsuit involving this bond, a venue shall be proper only in Thurston County Superior Court.

Signed, sealed and dated this _____ day of _____, _____ .
(month) (year)

This statewide bid bond may be used for bidding between the following dates:

Starting:

Ending:

It Is Hereby Understood and Agreed:

If PRINCIPAL is an apparent high bidder, PRINCIPAL shall before 4:30 p.m ., on day of sale, pay to the STATE the amount of the initial deposit in the form of a certified check, cashier's check, bank draft, cash or money order, then this agreement shall be void for the sale on which the payment is made; otherwise, it will remain in force.

SURETY will make payment to the STATE within ten days after demand by the STATE if the PRINCIPAL shall fail to make timely payment as described above.

The SURETY may cancel this bond by sending a written notice to the STATE, not less than forty-five days before a cancellation date; liability shall terminate as to acts or omissions of the PRINCIPAL that occur after the cancellation date.

The PRINCIPAL and the SURETY executed this bond on the date first mentioned.

Principal: (Above named)

Signature: _____

Name: _____

Title: _____

Address: _____

City: _____
State & Zip Code

Surety: (Above named)

Signature: _____

Name: _____

Title: _____

Address: _____

City: _____
State & Zip Code

Surety: (Local Office of Authorized agent)

Signature: _____

Name: _____

Title: _____

Address: _____

City: _____
State & Zip Code

Notary or Company Seal in Space Above

Instructions for Completing Timber Sale Statewide Bid Bond

- A. This form is authorized for use as bid guaranty to qualify for bidding on Washington State Department of Natural Resources timber sales.
- B. The Statewide Bid Bond may be used as bid guaranty on more than one timber sale.
- C. The full legal name and business address of the PRINCIPAL must be inserted where indicated and must be the same as will appear on the bidding record and timber sale contract. The bond must be signed by an authorized person. Additionally, the name must be typed or printed below the signature and title must be shown.
- D. The full legal name and business address of the SURETY must be inserted where indicated. The bond must be signed by an authorized person. Additionally, the name must be typed or printed below the signature and the title must be shown.
- E. If the SURETY does not have a Washington State office or resident agent, but is authorized to transact surety business in the State of Washington as SURETY, it may leave this signature block blank.
- F. This form must be received by the Department of Natural Resources, Product Sales & Leasing Division, PO BOX 47016, Olympia, Washington, 98504-7016, ten days in advance of the auction.
- G. **The State reserves the right to reject *incomplete or incorrect* bid bond forms, making such forms unacceptable as bid guaranty.**

**State of Washington
Department of Natural Resources**

Timber Sale Per Sale Bid Bond

Bond Number _____

_____ of _____, hereinafter called PRINCIPAL, and _____, hereinafter called SURETY, a corporation organized under the laws of the State of _____ and authorized to transact surety business in the State of Washington, as SURETY, are held and firmly bound jointly and severally to the State of Washington, Department of Natural Resources, hereinafter called the STATE, in the sum of \$ _____ Dollars, lawful money of the United States of America. The PRINCIPAL binds itself, its heirs, executors, administrators, successors, and assigns, and the SURETY binds itself, its successors, and assigns, all jointly and severally.

This bond shall be governed by the laws of the State of Washington. In the event of a lawsuit involving this bond, venue shall be proper only in Thurston County Superior Court.

Signed, sealed, and dated this _____ day of _____, 20 _____.

BID IDENTIFICATION:

SALES NAME(S)	REQUIRED DEPOSIT	AGREEMENT NUMBER(S)

DATE OF BID: _____

It Is Hereby Understood and Agreed:

If PRINCIPAL is the high bidder on the sale(s) identified above and, within ten (10) days of the day of sale, transmits cash, certified check, cashier's check, bank draft or money order, payable to the STATE, in the amount of the bid guaranty required by the terms of the Notice of Sale, *then* this obligation shall be void; *otherwise*, it shall remain in force.

SURETY will make payment to the STATE within ten (10) days after demand by the STATE whenever the PRINCIPAL shall fail to make timely payment as described above.

IN WITNESS WHEREOF: the PRINCIPAL and the SURETY have caused this bond to be executed on the date first mentioned.

SECOND OFFICER:

Signature: _____

Name: _____

Title: _____

PRINCIPAL: (Above Named)

Signature: _____

Name: _____

Title: _____

SURETY: (Local Office of Authorized Agent)

Signature: _____

Name: _____

Title: _____

Address: _____

City: _____

State & Zip: _____

SURETY: (Above Named)

Signature: _____

Name: _____

Title: _____

Address: _____

City: _____

State & Zip _____

NOTARY OR COMPANY SEAL IN THE SPACE ABOVE

Instructions for Completing Timber Sale Per Sale(s) Bid Bond

- A. This form is authorized for use as bid guaranty to qualify for bidding on Washington State Department of Natural Resources timber sales.
- B. The Timber Sale Per Sale Bid Bond may be used as bid guaranty on more than one timber sale auction held the same date at the same location.
- C. The full legal name and business address of the PRINCIPAL must be the same as will appear on the bidding record and timber sale contract. The bond must be signed by an authorized person, the name typed or printed, and title shown. If PRINCIPAL is a corporation, a second officer must sign in the space to the left of the signature of the officer executing for the PRINCIPAL.
- D. The full legal name and business address of the SURETY must be inserted where indicated. The bond must be signed by an authorized person. Additionally, the name must be typed or printed below the signature and the title must be shown. If this person is not an officer of the corporation, evidence of authority must be submitted.
- E. If the SURETY does not have a Washington State office or resident agent, but is authorized to transact surety business in the State of Washington as Surety, it may leave the local office signature block blank.
- F. The date of the bid bond must not be later than the auction date.
- G. **The State reserves the right to reject incomplete or *incorrect* bid bond forms, making such forms unacceptable as guaranty.**

STATE OF WASHINGTON
DEPARTMENT OF NATURAL RESOURCES

LOG SORT SEALED BID FORM

Sale Name _____ Agreement Number _____ Date _____

_____ hereby submits the following bid for delivered logs.
(Print Company Name)

_____ Telephone Number _____
(Print Name Authorized Company Representative) (Contact for bid result notification)

(Street Address)

(City, State and Zip)

Agreement Number	Sort Number	<u>Delivered Logs Bid Amount</u> (fill in one only)	
		\$ /MBF	\$ /TON

Bid Deposit Amount \$ _____

- Bid Deposit Type:**
- Cash, Certified Check, Cashiers Check, or Money Order
 - Per Sale Bid Bond
 - Statewide Bid Bond, Number _____

The successful bidder agrees to furnish payment security acceptable to the State in the amount as described in clause P-041 of the Purchaser’s contract prior to log delivery and at a date to be determined by the State.

Bidder’s Warranty and Bid Signature

By signing and submitting this bid as offer to purchase forest products from the State, the Bidder hereby warrants to the State that they have had an opportunity to fully inspect the sale area and the forest products being sold. Bidder further warrants to the State that they enter this bid based solely upon their own judgment of the value of the forest products, formed after their own examination and inspection of both the timber sale area and the forest products being sold. Bidder also warrants to the State that they enter this bid without any reliance upon the volume estimates, acreage estimates, appraisals, pre-bid documentation, or any other representation by the State Department of Natural Resources.

(Signature of Authorized Representative submitting this bid)

(Date of Signature)

(Print name and title of Authorized Representative submitting this bid)

NOTES: A separate bid form is required for each log sort bid and must be delivered in a separate envelope. Photocopies of this bid form may be used. Each photocopy must have original signatures. Final contract award is contingent upon the State’s haul cost analysis. Actual haul route may vary and is subject to change at the State’s discretion. All sales are subject to confirmation by the Commissioner of Public Lands as per RCW 79.15.100.

LOG SORT SEALED BID SUPPLEMENTAL INFORMATION FORM_____
(Print Company Name)_____
(Sale Name)_____
(Agreement Number)_____
(Sort Number)_____
(email: optional for DNR production report distribution)**Log Manufacturing Specifications:****Sawlog and Peeler sorts:** Enter at least one preferred log length including trim for each log length range below.**Pole sorts (Distribution):** Enter three or more lengths. Attach preferred manufacturing information.**Pole sorts (Transmission):** Enter six or more lengths. Attach preferred manufacturing information.**Tonnage sorts:** See bid form instructions for required log lengths. Enter additional custom lengths as desired.

Log Length Ranges	Bidder's Preferred Log Lengths
16 ft. through 20 ft.	
22 ft. through 30 ft.	
32 ft. through 40 ft.	
Distribution Poles – 35 ft. through 55 ft.	
Transmission Poles – 60 ft.+	

Log Delivery Information:**1) Designate the point of delivery and address (must be a street address)**_____
(Location Name)_____
(Street Address)_____
(City, State and Zip)**2) Designate the state approved Scaling and Weighing facilities closest to the point of delivery as needed.****Scaling Location Information****Weighing Location Information**_____
(Scaling Location Name)_____
(Weighing Location Name)_____
(Third Party Scaling Organization)_____
(Weighing Location Owner)_____
(Scaling Location Street Address)_____
(Weighing Location Street Address)_____
(Scaling Location City, State and Zip)_____
(Weighing Location City, State and Zip)

Final contract award is contingent upon the State's haul cost analysis. Actual haul route may vary and is subject to change at the State's discretion. Additional terms or conditions requested by the bidder on or attached to the Log Sort Sealed Bid or Supplemental Information Forms are informational only and non-binding.

Instructions for Completing the Log Sort Sealed Bid and Supplemental Information Forms.

All bids submitted for the purchase of forest products being sold by the Washington State Department of Natural Resources must have an original signature on behalf of the person or entity submitting the bid, and must be on the form(s) provided in this booklet or a photocopy thereof. The DNR will not accept bids that are not signed, and will not accept bids that are not on the current, approved bid form. All appropriate blanks including Agreement Number, Sort Number, Bid amount (per mbf or ton as appropriate for the sort), Bid deposit amount and type. Signatures and date on bid form must be completed including the bid bond number if bidder is relying upon a bid bond for bid deposit.

Bids shall not be accepted if a completed '**Log Sort Sealed Bid Supplemental Information Form**' is not included with the approved '**Log Sort Sealed Bid Form**'.

Required log lengths for tonnage sorts: Preferred log lengths for tonnage sawlog sorts shall include the following plus any additional lengths identified on the Bid Supplemental Information form:

Species Type	Preferred Lengths
Conifer Sorts	16', 20', 24', 26', 32', 40'
Hardwood Sorts	18', 20', 26', 28', 30', 36', 38', 40'

For more specific information, contact the appropriate region office.

In-Person Bids

- A. Sealed bids must be in auction box or auction envelope before 10:00 a.m. on the day of sale at the location specified in the notice of sale.
- B. Sealed bids must be submitted in an envelope with the name of the sale, the bidder's name and the contract agreement number clearly written on the outside of the envelope. The full legal name and business address of the bidder must be inserted where indicated on the form, and must be the same as the name on the bid bond and timber sale contract. The bid form must be signed by an authorized person. When a bidder has more than one person authorized to bid, then documentation of those persons with signature authority for bidding must accompany the bid or be on file at the region office. Sealed bid envelopes are available at all region offices. One bid per envelope.
- C. Sealed bid envelopes must contain the following:
 1. A completed '**Log Sort Sealed Bid Form**';
 2. A completed '**Supplemental Information Form**' and;
 3. A bid deposit

Mailed Bids

- A. Mail-in bid envelopes are required to have printed on the outside: "DO NOT OPEN UNTIL SALE DATE. SEALED BID ENCLOSED." The sealed bid envelope(s) will be enclosed inside the mailed-in envelope. Mailed bids must be submitted in an envelope with the name of the sale, the bidder's name and the agreement number clearly written on the outside of the envelope. The full legal name and business address of the bidder must be inserted where indicated on the form, and must be the same on the bid bond and timber sale contract. The bid form must be signed by an authorized person. When a bidder has more than one person authorized to bid, then documentation of those persons with signature authority for bidding must accompany the bid or be on file at the region office. Mail-in envelopes are available at all region offices. One bid per mailed-in envelope.
- B. Mail-in or otherwise delivered bids will be accepted up to 4:30 p.m. the last business day before the auction by the region office in which the sale is located. Bidders assume the risk for the method of delivery they chose. The DNR assumes no responsibility for any delays caused by any delivery service.
- C. Sealed bid envelopes must contain the following:
 1. A completed '**Log Sort Sealed Bid Form**';
 2. A completed '**Log Sort Sealed Bid Supplemental Information Form**' and;
 3. A bid deposit

Department of Natural Resources Region Offices

Olympia Headquarters
 1111 Washington St SE
 MS 47000
 Olympia, WA 98504-7000
 (360) 902-1000
www.dnr.wa.gov

Product Sales & Leasing Division

1111 Washington St SE
 MS 47014
 Olympia, WA 98504-7014
 (360) 902-1600

South Puget Sound Region

950 Fairman Ave N
 Enumclaw, WA 98022-9282
 (360) 825-1631

Pacific Cascade Region

601 Bond Road
 PO Box 280
 Castle Rock, WA 98611-0280
 (360) 577-2025

Southeast Region

713 Bowers Road
 Ellensburg, WA 98926-9301
 (509) 925-8510

Northwest Region

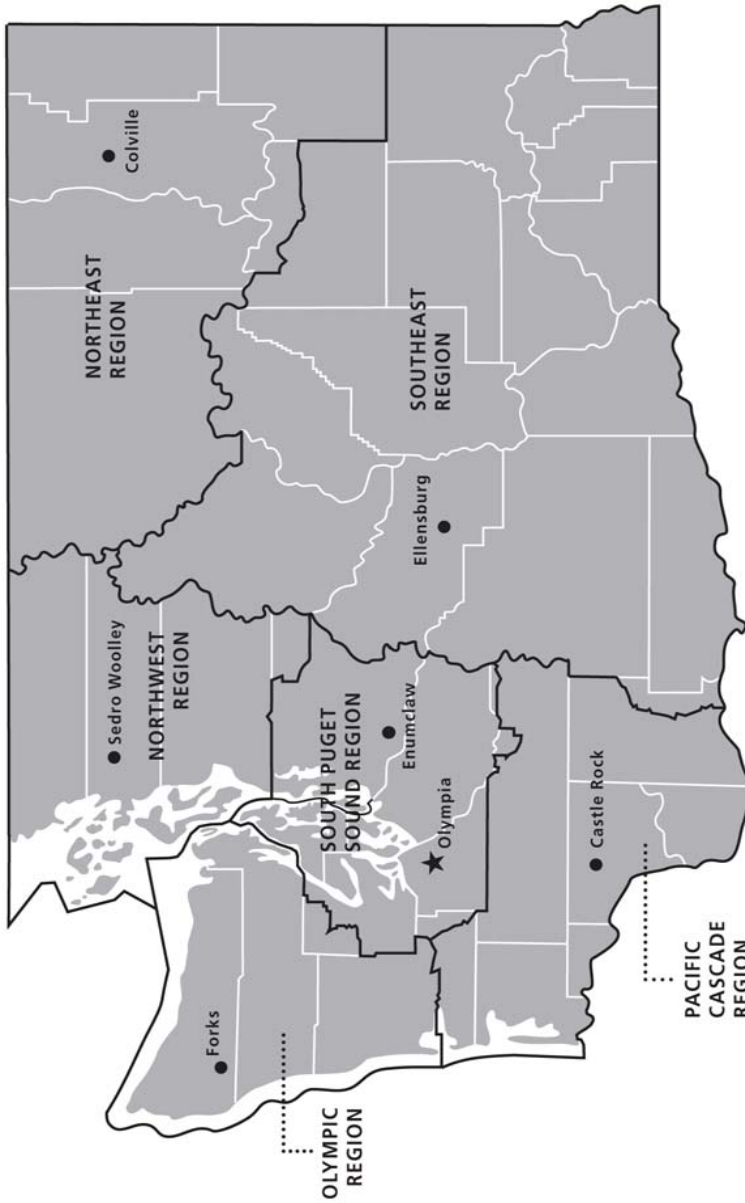
919 N Township St
 Sedro Woolley,
 WA 98284-9384
 (360) 856-3500

Olympic Region





411 Tillicum Lane
 Forks, WA 98331-9271
 (360) 374-2800

Northeast Region

225 S Silke Road
 PO Box 190
 Colville, WA 99114-0190
 (509) 684-7474



DNR REGIONS

-  DNR Region Boundaries
-  County Boundaries
-  DNR Region Office
-  Olympia Headquarters



WASHINGTON STATE DEPT OF
NATURAL RESOURCES



For more information about how public lands are managed visit DNR's web page at www.dnr.wa.gov

Fire, Burn Ban Information and Region Offices
 Toll Free: 1-800-527-3305 General TTY: 7-1-1





WASHINGTON STATE DEPT OF
**NATURAL
RESOURCES**

1111 WASHINGTON ST SE
MS 47014
OLYMPIA WA 98504-7014

www.dnr.wa.gov

For alternate formats
of this document,
Call (360) 902-1000
TRS: 7-1-1

PRINTED IN THE USA ON RECYCLED PAPER

