



# Public Auction Sale of Timber

## November 2023

### Book 1053



# IMPORTANT NOTICES

## *Natural Resources (DNR)*

### **Governmental Regulatory Actions or Orders**

The purchaser assumes the risk of liabilities related to regulatory actions or orders by any government agency that may affect the operability of these timber sales. Such regulatory actions or orders include, but are not limited to, actions taken pursuant to the State Forest Practices Act, Chapter 76.09 RCW, and the Federal Endangered Species Act, 16 U.S.C. §§ 1531-1544. Please see timber sale contract clauses G-066 and G-220 for further information.

### **Threatened and Endangered Species**

DNR cannot verify the presence or absence of any threatened or endangered species that may affect the operability of the timber sale. Purchasers must rely on their own assessments.

### **Export Restricted**

All timber purchased under these state DNR contracts shall not be exported outside of the United States until the timber has been processed. Purchasers shall not violate any of the prohibitions in WAC 240-15-015 (relating to the prohibitions on export and substitution), WAC 240-15-025 (relating to reporting requirements), and WAC 240-15-030 (relating to enforcement). If purchasers knowingly violate WAC 240-15-015, purchasers shall be barred from bidding on or purchasing export restricted timber as provided.

### **Cover photos**

Timber Sales in this book are from state trust lands, managed to help build K-12 public schools, state universities, colleges, prisons, mental hospitals, the state Capitol; and to support local services in many counties.

**Top right:** Landscape view of DNR-managed trust lands in western Washington. Photo courtesy of DNR staff.

**Second down right:** Timber harvest operations on DNR-managed trust land. Photo courtesy of DNR staff.

**Third down right:** Log truck loaded with timber harvested from DNR-managed trust land. Photo courtesy of DNR staff.

**Bottom right:** Marcus Whitman Elementary School in Richland Washington. Photo courtesy of Richland School District.

**Bottom middle:** Storytime at the Shelton Timberland Library. Photo courtesy of Timberland Regional Library.

**Bottom left:** Douglas-fir seedlings growing at the Webster Nursery. Many of these seedlings will be planted following timber harvest on DNR-managed trust lands. Photo courtesy of DNR staff.

## Table of Contents

Certification Opportunities for DNR Timber Purchasers	Page 3
Bidder/Purchaser Auction and Bidding Information	Page 5
Summary of All Sales Being Offered in November	Page 9
Ode To Joyce	Page 11
Red Stapler VRH & Thin	Page 15
Rusty Ridge VRH & VDT	Page 21
Licorice Root	Page 25
Q Jupiter	Page 29
In The Pipeline	Page 37
Cross Pollinate Sorts	Page 41
Marshmallow	Page 47
Sealed Bid Form and Instructions	Page 55
Statewide Bid Bond and Instructions	Page 57
Timber Sale per Sale Bid Bond and Instructions	Page 61
Log Sort Sealed Bid Form and Instructions	Page 65

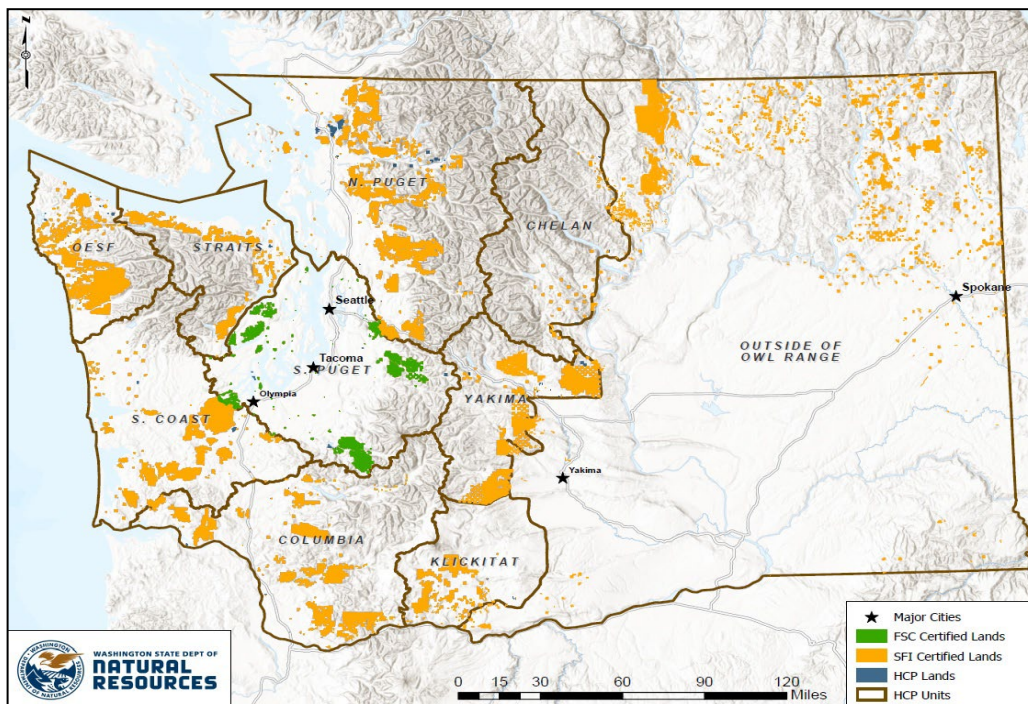


# Forest Management Certification Opportunities for DNR Timber Purchasers

Forest management certification is a voluntary process that identifies and recognizes forests grown to an approved set of standards and demonstrates environmentally responsible, socially beneficial, and economically viable management practices. To achieve certification and maintain it, certificate holders such as DNR must successfully undergo annual audits conducted by external, accredited certifying bodies. In the U.S., there are two recognized forest certification systems for public land: the [Forest Stewardship Council®](https://www.fsc.org/) (FSC® C012959) and the [Sustainable Forestry Initiative®](https://www.forests.org/) (SFI®-00071).

To learn more about chain-of-custody and/or about becoming a “program participant” in the FSC program, please visit [us.fsc.org/en-us](https://us.fsc.org/en-us).

To learn more about chain-of-custody and/or about becoming a “program participant” in the SFI program, please visit [forests.org](https://forests.org).



To learn more, visit DNR's [Forest Certification](#) webpage or contact:

### Product Sales & Leasing Division

#### Product Sales Section

Steve Teitzel, Operations, [steve.teitzel@dnr.wa.gov](mailto:steve.teitzel@dnr.wa.gov)

### Forest Resources Division

#### HCP and Scientific Consultation Section

Allen Estep, Asst. Division Mgr., [allen.estep@dnr.wa.gov](mailto:allen.estep@dnr.wa.gov)



The mark of  
responsible forestry



DNR's FSC certificate # is: BV-FM/COC-080501

DNR's SFI certificate # is: BVC-SFIFM-018227



# Washington State Department of Natural Resources (DNR)

## Bidder's/Purchaser's Inspection of Sale Area and Forest Products

Acreage estimates and volume estimates contained within each timber notice of sale and each timber sale contract are made only for administrative and identification purposes. Except as expressly provided by the timber sale contract, the purchaser shall be responsible for paying the entire purchase price, even if the actual acreage or timber volume varies from the estimated quantity or volume shown.

All prospective bidders have the opportunity and are expected to inspect the sale area and the forest products located thereon. Bidders shall not rely on any representations by the State including, but not limited to, acreage estimates, volume estimates, appraisal or pre-bid documentation. The successful bidder/purchaser will further warrant that they have entered the timber sale contract without any reliance upon the DNR's volume estimates, acreage estimates, appraisals, pre-bid documentation, or any other representation by the DNR.

*Any timber sale contract arising out of these public auctions will require the successful purchaser to warrant that they are entering the timber sale contract based solely upon their own judgment of the value of the forest products, formed after their own examination and inspection of both the timber sale area and the forest products being sold.*

## Exclusion and Disclaimer of Warranties

The PARTIES AGREE that the IMPLIED WARRANTIES OF MERCHANTABILITY AND FITNESS FOR A PARTICULAR PURPOSE, and ALL OTHER WARRANTIES EXPRESS OR IMPLIED, ARE EXCLUDED from this transaction, and shall not apply to the goods sold. For example, THE FOLLOWING SPECIFIC MATTERS ARE NOT WARRANTED, and are EXCLUDED from this transaction:

- A. ***The merchantability of the forest products.*** The use of the term "merchantable" in any document is not intended to vary the foregoing.
- B. ***The condition of the forest products.*** All forest products will be conveyed "AS IS."
- C. ***The acreage contained within any sale area.*** Any acreage descriptions appearing in the timber notices of sale, timber sale contract, timber sale map or other documents are estimates only, provided solely for administrative and identification purposes.
- D. ***The volume, quality, or grade of the forest products.*** The descriptions of the forest products to be conveyed are estimates only, made solely for administrative and identification purposes.
- E. ***The correctness of any soil or surface conditions, presale construction appraisals, investigations, and all other pre-bid documents prepared by or for the State.*** These documents have been prepared for the State's appraisal purposes only.
- F. ***That the sale area is free from threatened or endangered species, or their habitat.*** The State is not responsible for any interferences with forestry operations that result from the presence of any threatened or endangered species, or the presence of their habitat, within the sale area.
- G. That the forestry operations to be performed under this contract will be free from regulatory actions by governmental agencies. The State is not responsible for actions to enforce regulatory laws, such as the Washington Forest Practices Act (Chapter 76.09 RCW), taken by the Department of Natural Resources or any other agency that may affect the operability of these timber sales.
- H. Items contained in any other documents prepared for or by the State.

Please also see timber sale contract clause G-060 for further information.

# BIDDING PROCEDURES FOR TIMBER AUCTIONS

*The general requirements that follow are a part of all Timber Notices of Sale to be auctioned by the Department of Natural Resources (DNR).*

## General Information

*The State reserves the right to waive minor irregularities and the right to reject any or all bids.*

- A. This book contains the timber notices of sale and maps for each timber sale scheduled to be auctioned. More specific information can be obtained by contacting the appropriate region office at the number listed on the back cover of this book. Sales may be added to each monthly auction by the Department which are not included in this publication. This publication is not updated following original production.
- B. The timber notice of sale is a summary of sale information. For more specific information, interested parties are encouraged to view the Auction Packets on [www.dnr.wa.gov](http://www.dnr.wa.gov). Auction Packets contain **DRAFT** copies of the timber notice of sale, map, contract, road plan, cruise data, precruise and cruise narrative, and other associated documents.
- C. Timber sale auction packets may also be obtained at no charge for individual sales by visiting the appropriate region office.
- D. Timber sale contracts contain extensive terms and conditions that will be binding upon successful high bidders. Each bidder should carefully review all terms contained in the appropriate **DRAFT** timber sale contract prior to bidding on a sale, and should review the final contract prior to signing. **DRAFT** timber sale contracts are contained in the auction packets and are available upon request at the respective region office.
- E. Sales advertised in this book are subject to the Board of Natural Resources approval before they will be sold. The Board meets and approves sales approximately six weeks prior to auction.
- F. The State does not guarantee the accuracy of any information contained herein pertaining to particular sales. Therefore, all prospective purchasers are expected to make their own independent inspections and appraisals prior to bidding.
- G. If any conflict exists between the information in the Timber Notice of Sale, timber sale map, sale auction packets and that in the timber sale contract, the signed contract will prevail.
- H. Purchasers must pay the Forest Excise Tax on the bid price, permanent road construction costs, and other considerations. The tax rate is 5% without the EARR credit and 4.2% with the credit. For more information contact the Department of Revenue, Forest Tax Section at 1-800-548-8829.
- I. **All sales are subject to confirmation by the DNR under RCW 79.15.120.**
- J. **Within 30 days of sale confirmation, the apparent high bidder will provide to the State the Performance Security specified on each Notice of Sale. The successful bidder also agrees to return a signed contract to the State within 30 days of confirmation.** Failure to provide a signed contract to the state within 30 days of confirmation may result in a loss of bidder's rights to the products sold and forfeiture of initial deposit moneys.
- K. Each DNR region office has information about sales offered in that region. For further information, contact the respective DNR region office. Region office addresses and telephone numbers appear on the back cover of this booklet.
- L. The purchaser assumes the responsibility for any costs associated with extra maintenance or repair levied by a county for any county road used by the purchaser.

## Auction Time and Location

Auctions will start at 10:00 a.m. and close at 4:00 p.m. on the date and at the location specified in each Timber Notice of Sale.



## **Bidding Process**

- A. All timber will be auctioned using the sealed bid method.
- B. Bids submitted on the day of auction must be in the bid box at the specified auction location before 10:00 a.m. The respective DNR region office must receive mailed bids by 4:30 p.m., on the last business day before the auction. Bidders assume all risk for the method of delivery.
- C. The DNR has the right to reject bid forms that are completed incorrectly. *All bid forms must have an original signature on behalf of the person or entity submitting the bid, and must be on the form provided in this booklet or a photocopy thereof. Revised documents are not permissible.* Bidding instructions are on the back of the Sealed Bid Form. A bid deposit must be included in the sealed bid envelope unless using a Timber Sale Statewide Bid Bond.
- D. All bids must include the completed Sealed Bid Form and bid deposit.
- E. Bids will be opened in each respective region in the order in which sales appear in the Public Auction Sale of Timber book (alphabetically by county and by agreement number). Sales added after the book is printed will be inserted to retain this order. Sort sales may be auctioned out of this sequence at the State's convenience.
- F. If a tie bid occurs, the names of the tie bidders will be placed in a hat and the successful bidder will be determined by a drawing.
- G. Opportunities to Withdraw Bids:  
For all sales offered on a stumpage basis only, the apparent high bidder on a particular sale will have the option of withdrawing additional sealed bids submitted for any remaining sales to be auctioned. The apparent high bidder must exercise this option within two minutes after the apparent high bidder is announced. This option is not available for sales offered on a delivered basis.

## **Eligibility to Bid**

The following criteria must be met in order to bid on State timber sales:

- 18 years of age (or have a co-signer who meets the eligibility requirements)
- Licensed to do business in the State of Washington
- Eligible to bid on Export Restricted timber
- Authorized to submit bids

## **Authorized Representatives**

Company officers or company authorized representatives may bid on State sales, sign State documents, or sign checks. A list of authorized representatives and their specific authorities must be submitted, in writing, to the Department of Natural Resources, Product Sales and Leasing Division, P.O. Box 47014, Olympia, Washington, 98504-7014, ten days in advance of the auction. *A company owner or officer must sign this submittal.*

## **Bid Deposits**

- A. Required bid deposits are listed on each Timber Notice of Sale.
- B. Bid deposits must be in the form of cash, certified check, cashiers' check, money order or bid bond.
- C. Bid bonds may be either a Timber Sale Per Sale Bid Bond or a Timber Sale Statewide Bid Bond.
- D. All bid deposits shall be submitted by the person or entity submitting the bid and made payable to the Department of Natural Resources. **Third party deposits will not be accepted.**

## **Timber Sale Per Sale Bid Bonds**

- A. The Per Sale Bid Bond shall guarantee payment of the bid deposit **within ten days of auction.**
- B. The balance between the bid bond and the Initial Deposit payment is due **by 4:30 p.m., on the day of auction.**
- C. Additional forms and instructions for a Per Sale Bid Bond are available at any DNR region office.

## **Timber Sale Statewide Bid Bond**

- A. Statewide Bid Bonds shall guarantee payment of the Initial Deposit on any statewide timber sale while the bond is in effect.
- B. The Statewide Bid Bond must be received by the Department of Natural Resources, Product Sales and Leasing Division, P.O. Box 47014, Olympia, Washington, 98504-7014, ten days in advance of the auction date. The bond shall be in the amount of \$150,000.00.
- C. Successful bidders using a Statewide Bid Bond must pay the total Initial Deposit payment (10% of the total bid price) **by 4:30 p.m., on the day of the auction.**
- D. A Statewide Bid Bond cannot be used to secure the Initial Deposit payment due the day of auction.
- E. Additional forms and instructions for a statewide bid bond are available at any DNR region office.

## **Payments**

The initial deposit for a sale is 10% of the total bid value as submitted by the apparent high bidder (25% if the bidder is a defaulter as defined under WAC 332-140-300) and never less than \$5,000.00 for lump sum sales. For Lump Sum sales appraised at less than \$5,000.00, the entire bid value is due on day of auction.

- A. Apparent high bidders using cash, certified check, cashiers' check or money order as a bid deposit must pay the total Initial Deposit amount by 4:30 p.m. on auction day.
- B. Apparent high bidders using a Timber Sale Per Sale Bid Bond as a bid deposit must pay the difference between the bid deposit and the total initial deposit by 4:30 p.m., on the day of auction. The bid bond amount must be replaced with a certified check, cashiers' check, bank draft, cash, money order, or wire transfer within ten days of the auction.
- C. Apparent high bidders using a Timber Sale Statewide Bid Bond must pay the entire Initial Deposit amount by 4:30 p.m. on the day of auction.
- D. All payments must be in the form of a certified check, cashiers' check, bank draft, cash, money order or wire transfer.



**Summary Report of All Sales for the Month of November 2023**

---

**Board Sales**

<u>County</u>	<u>Region</u>	<u>Agree #</u>	<u>FSC® Sale Name</u>	<u>Volume</u>	<u>Value</u>
Clallam	Olympic	100666	ODE TO JOYCE	6,240	\$1,854,000.00
Cowlitz	Pacific Cascade	105512	RED STAPLER VRH AND THIN	5,302	\$619,000.00
Grays Harbor	South Puget	103588	RUSTY RIDGE 2024 VRH & VDT	1,030	\$428,000.00
Mason	South Puget	103624	LICORICE ROOT	3,550	\$1,040,000.00
Okanogan	Northeast	104762	Q JUPITER	2,321	\$343,000.00
Pacific	Pacific Cascade	104154	IN THE PIPELINE	5,905	\$1,975,000.00
Pacific	Pacific Cascade	104587	CROSS POLLINATE SORTS	7,068	\$4,302,985.00
Thurston	South Puget	103589	MARSHMALLOW	10,658	\$2,927,000.00
<b>Total</b>				<b>42,074</b>	<b>\$13,488,985.00</b>



*Scan with your smartphone or tablet to go to the November 2023 timber auction page*





TIMBER NOTICE OF SALE

SALE NAME: ODE TO JOYCE

AGREEMENT NO: 30-100666

AUCTION: November 15, 2023 starting at 10:00 a.m., COUNTY: Clallam Forks, WA

SALE LOCATION: Sale located approximately 1 mile west of Joyce, WA

PRODUCTS SOLD AND SALE AREA:

All timber except trees marked with a band of blue paint or bounded out by leave tree area tags and all downed red cedar or any timber that has been on the ground for 5 years or more (5 years is defined by more than 1.5 inches of sap rot), bounded by timber sale boundary tags, the PA-J-1000, PA-J-1100, Private Land, BPA Power Lines in Unit 1; Timber Sale Boundary tags, Private land in Unit 2; Timber Sale Boundary tags, Private land and the PA-J-1000 in Unit 3; Timber Sale Boundary tags, PA-J-1200 in Unit 4.

All timber bounded by right of way boundary tags in Unit 5.

All forest products above located on part(s) of Sections 5, 6, 7 and 8 all in Township 30 North, Range 8 West, Sections 31 all in Township 31 North, Range 8 West, W.M., containing 127 acres, more or less.

CERTIFICATION: This sale is certified under the Sustainable Forestry Initiative® program Standard (cert no: BVC-SFIFM-018227)

ESTIMATED SALE VOLUMES AND QUALITY:

Table with columns: Species, Avg DBH, Ring Count, Total MBF, and MBF by Grade (1P, 2P, 3P, SM, 1S, 2S, 3S, 4S, UT). Rows include Douglas fir, Redcedar, Hemlock, Red alder, Maple, and Sale Total.

MINIMUM BID: \$1,854,000.00 BID METHOD: Sealed Bids

PERFORMANCE SECURITY: \$100,000.00 SALE TYPE: Lump Sum

EXPIRATION DATE: October 31, 2025 ALLOCATION: Export Restricted

BID DEPOSIT: \$185,400.00 or Bid Bond. Said deposit shall constitute an opening bid at the appraised price.

HARVEST METHOD: 62% Ground Based 38% Uphill cable 30' Equipment limitation zones on all typed water unless approved by the Contract Administrator. Forest products sold under this contract shall be harvested and removed using cable, cable-tethered, and ground based equipment. Cable-tethered equipment is limited to sustained slopes of 75% and less. Non-tethered self-leveling tracked equipment is limited to sustained slopes that are 45% and less. Rubber tired skidders are restricted unless approved by the Contact Administrator. Authority to use other equipment or to operate outside the equipment specifications



## TIMBER NOTICE OF SALE

---

detailed above must be approved in writing by the State. Designated crossings must be approved by the Contract Administrator.

Falling, yarding and timber hauling will not be permitted from November 1 to April 30, on weekends, State recognized holidays or from 8:00 p.m. to 6:00 a.m., unless authorized in writing by the Contract Administrator.

### **ROADS:**

6.85 stations of required construction. 44.00 stations of required reconstruction. 46.25 stations of optional construction. 2.45 stations of optional reconstruction. 290.85 stations of required pre-haul maintenance. 36.55 stations of optional pre-haul maintenance. All road activities including timber haul and rock pit development will not be permitted from November 1 to April 30, on weekends, State recognized holidays or from 8:00 p.m.- 6:00 a.m., unless authorized in writing by the Contract Administrator.

Bridge installation on the PA-J-1025, Stations 29+94 - 30+39 will not be permitted from October 1 - June 30.

### **ACREAGE DETERMINATION**

**CRUISE METHOD:** Sale acreage was 100% GPS'd . Sale units were cruised using a variable plot sample.

**FEES:** \$106,080.00 is due on day of sale. \$9.00 per MBF is due upon removal. These are in addition to the bid price.

**SPECIAL REMARKS:** There are locked gates on the PA-J-1200, PA-I-3000, PA-I-2600 and the BPA-3845. Contact the Olympic Region Dispatch Center at 360-374-2800 to obtain an AA-1-key.

Purchaser shall provide and construct Log Stringer Bridge on the PA-J-1025, Stations 29+94-30+39. Refer to Road plan for details.

Two week notice shall be given prior to any activities with Unit 1 for temporary re-routing or closure of the Olympic Discovery Trail.

All trees 60 inches in Diameter at Breast Height (DBH) and greater shall not be felled unless for safety reasons, which must be approved by the Contract Administrator. If trees 60 inches DBH or greater need to be felled for safety reasons, trees will be left where felled.

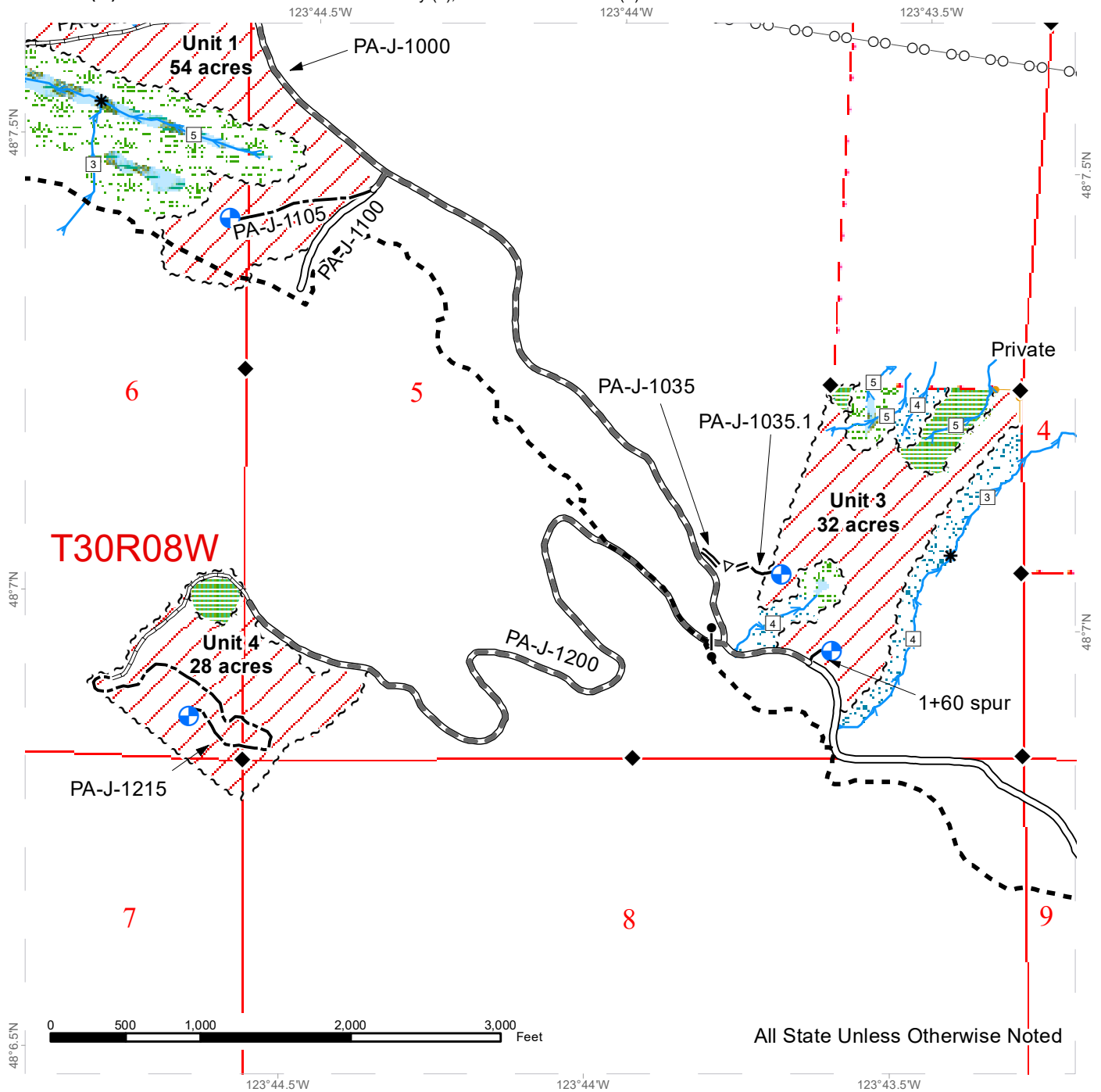
The BPA Checklist (Schedule C) shall be done prior to harvest or road building activities within or adjacent to BPA power lines.

Rock identified to be used out of a State lands rock pit shall meet specifications as identified within the Road Plan, which will be determined by the Contract Administrator. If the rock does not meet the specifications, a commercial source shall be used that does at the Purchaser's expense.

# TIMBER SALE MAP

**SALE NAME:** ODE TO JOYCE  
**AGREEMENT #:** 30-100666  
**TOWNSHIP(S):** T30R8W, T31R8W  
**TRUST(S):** Common School and Indemnity (3), State Forest Transfer (1)

**REGION:** Olympic Region  
**COUNTY(S):** Clallam  
**ELEVATION RGE:** 560-2080



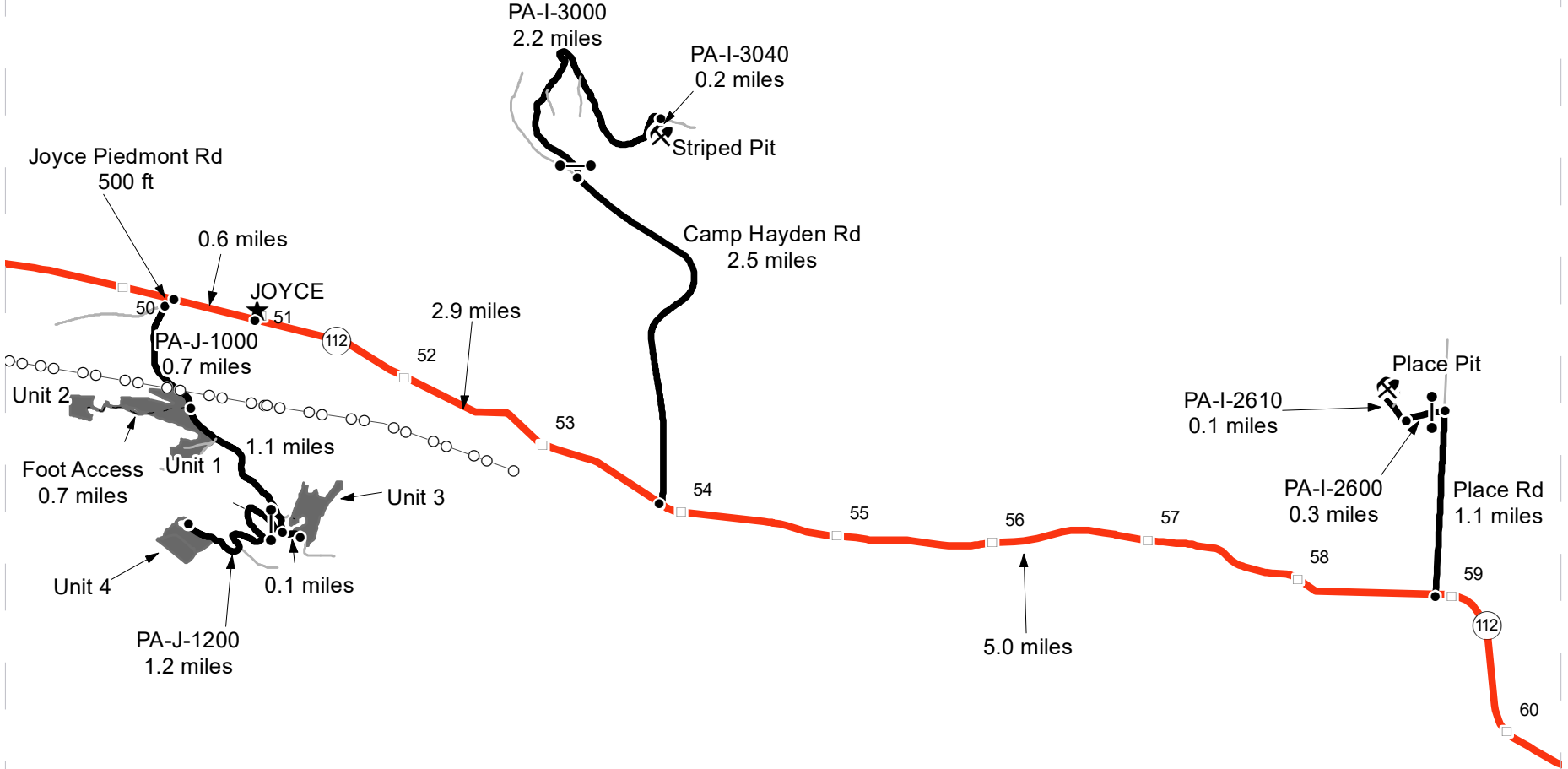
All State Unless Otherwise Noted

Variable Retention Harvest	Existing Roads	Sale Boundary Tags	Survey Monument
Leave Tree Area	Required Pre-Haul Maintenance	Leave Tree Tags	Gate
Riparian Management Zone	Required Reconstruction	Right of Way Tags	Bridge
Type-B Wetland	Required Construction	Take / Removal Trees	Proposed Landing
Wetland Management Zone	Optional Pre-Haul Maintenance	BPA Power Lines	Rock Pit
DNR Managed Lands	Optional Reconstruction	Streams	Stream Type
Public Land Survey Townships	Optional Construction	Stream Type Break	
Public Land Survey Sections	Discovery Trail		

# DRIVING MAP

**SALE NAME:** ODE TO JOYCE  
**AGREEMENT#:** 30-100666  
**TOWNSHIP(S):** T30R8W, T31R8W  
**TRUST(S):** Common School and Indemnity (3), State Forest Transfer (1)

**REGION:** Olympic Region  
**COUNTY(S):** Clallam  
**ELEVATION RGE:** 560-2080



Map may not be to scale

- Timber Sale Unit
- Haul Route
- Other Road
- Foot Access
- Power Lines
- Milepost Markers
- Town
- Gate (AA-1)
- Rock Pit

**DRIVING DIRECTIONS:**

**Unit 1:** From the town of Joyce, head west on State Highway 112 for 0.6 miles. Turn left onto Joyce-Piedmont and continue for 500ft. Turn left onto Joyce-Access Rd (PA-J-1000) and continue for 0.7 miles and Unit 1 will be on your right.  
**Unit 2:** Continue on foot from Unit 1 along the existing grade and right-of-way to Unit 2  
**Unit 3:** From Unit 1 continue 1.2 miles along the Joyce Access Rd and Unit 3 will be on your left  
**Unit 4:** From Unit 1, continue 1.1 miles along Joyce Access Rd before taking a sharp right onto PA-J-1200. Proceed through the locked gate (AA-1) and continue for 1.2 miles before arriving at Unit 4.  
**Striped Pit:** From the town of Joyce, head east on Hwy 112 for 2.9 miles. Turn left on Camp Hayden Rd and proceed for 2.5 miles before turning right onto PA-I-3000. Proceed through locked gate (AA-1), then continue for 2.2 miles before turning right onto PA-I-3040. Arrive at the pit in 0.2 miles.  
**Place Pit:** From the town of Joyce, head east on Hwy for 7.9 miles. Turn left on Place Rd and proceed for 1.1 miles. Then turn left on PA-I-2600, proceed through locked gate (AA-1) and continue for 0.3 miles. Turn right on PA-I-2610 and continue for 0.1 miles before arriving at Place Pit.







**TIMBER NOTICE OF SALE**

**SALE NAME:** RED STAPLER VRH AND THIN

**AGREEMENT NO:** 30-105512

**AUCTION:** November 16, 2023 starting at 10:00 a.m., **COUNTY:** Cowlitz  
Pacific Cascade Region Office, Castle Rock, WA

**SALE LOCATION:** Sale located approximately 21 miles east of Toutle

**PRODUCTS SOLD  
AND SALE AREA:**

All timber, except leave trees marked with blue paint, and all down timber existing 5 years prior to the day of sale, all down timber greater than 60 inches diameter, and snags bound by the following;

Unit 1, white "Timber Sale Boundary" tags and pink flagging, the 5625 and 5626 roads;

Unit 2, 3, 4, white "Timber Sale Boundary" tags and pink flagging, and the 5625 road;

Unit 5, white "Timber Sale Boundary" tags and pink flagging, the 3068 and 5631 roads;

Unit 6, all timber as described in Schedule A bounded by white "Timber Sale Boundary" tags and pink flagging, the 3060, 3068, 3069 and 3070 roads;

5633 ROW, orange "Right of Way Boundary" tags and pink flagging;

All forest products above located on part(s) of Sections 13, 14, 22, 23, 24 and 27 all in Township 9 North, Range 3 East, W.M., containing 356 acres, more or less.

**CERTIFICATION:** This sale is certified under the Sustainable Forestry Initiative® program Standard (cert no: BVC-SFIFM-018227)

**ESTIMATED SALE VOLUMES AND QUALITY:**

Species	Avg DBH	Ring Count	Total MBF	Total Tons	Price \$/Ton	MBF by Grade								
						1P	2P	3P	SM	1S	2S	3S	4S	UT
Douglas fir	16.8	8	2,278	20,077	\$24.00						770	1,218	264	26
Noble fir	12.1		1,748	14,738	\$5.00						200	817	710	21
Hemlock	12.7		1,209	11,576	\$5.00						163	631	399	16
Red alder	10.3		67	564	\$3.00							3	64	
Sale Total			5,302	46,955										

**MINIMUM BID:** \$24/ton (est. value \$619,000.00) **BID METHOD:** Sealed Bids

**PERFORMANCE SECURITY:** \$100,000.00 **SALE TYPE:** Tonnage Scale

**EXPIRATION DATE:** October 31, 2026 **ALLOCATION:** Export Restricted

**BIDDABLE SPECIES:** Douglas fir

**BID DEPOSIT:** \$61,900.00 or Bid Bond. Said deposit shall constitute an opening bid at the appraised price.



## TIMBER NOTICE OF SALE

---

**HARVEST METHOD:** Ground based equipment, Cable, and Cable-Assist. This sale is estimated to be 80 percent ground based harvest and 20 percent cable based harvest systems. Ground-based yarding is restricted to sustained slopes of 45 percent or less; Self-leveling equipment restricted to sustained slopes of 55 percent or less; Cable-assist to sustained slopes of 70 percent or less. For additional harvest requirements, refer to the H-140 clause in the contract.

**ROADS:** 47.22 stations of optional reconstruction. 1502.31 stations of required prehaul maintenance. 18.66 stations of abandonment. Rock used in accordance with the quantities on the ROCK LIST may be obtained from the 5 Way Pit located in Section 15, T9N, R3E WM. on state land at no charge to the Purchaser.

Rock used in accordance with the quantities on the ROCK LIST may be obtained from the 4240 Stockpile located on the 4240 road at Station 85+00 on the right, 9 Mile Stockpile located on the 4250 Road at Station 176+00 on the left or 5 Way Stockpile locate in Section 15, T9N, R3E, W.M. on state land at no charge to the Purchaser.

Rock used in accordance with the quantities on the ROCK LIST may be obtained from any commercial source at the Purchaser's expense.

### ACREAGE DETERMINATION

**CRUISE METHOD:** The sale acres were determined by GPS. The sale area was cruised using a variable plot cruise method.

**FEES:** \$90,134.00 is due on day of sale. \$9.00 per ton is due upon removal. These are in addition to the bid price.

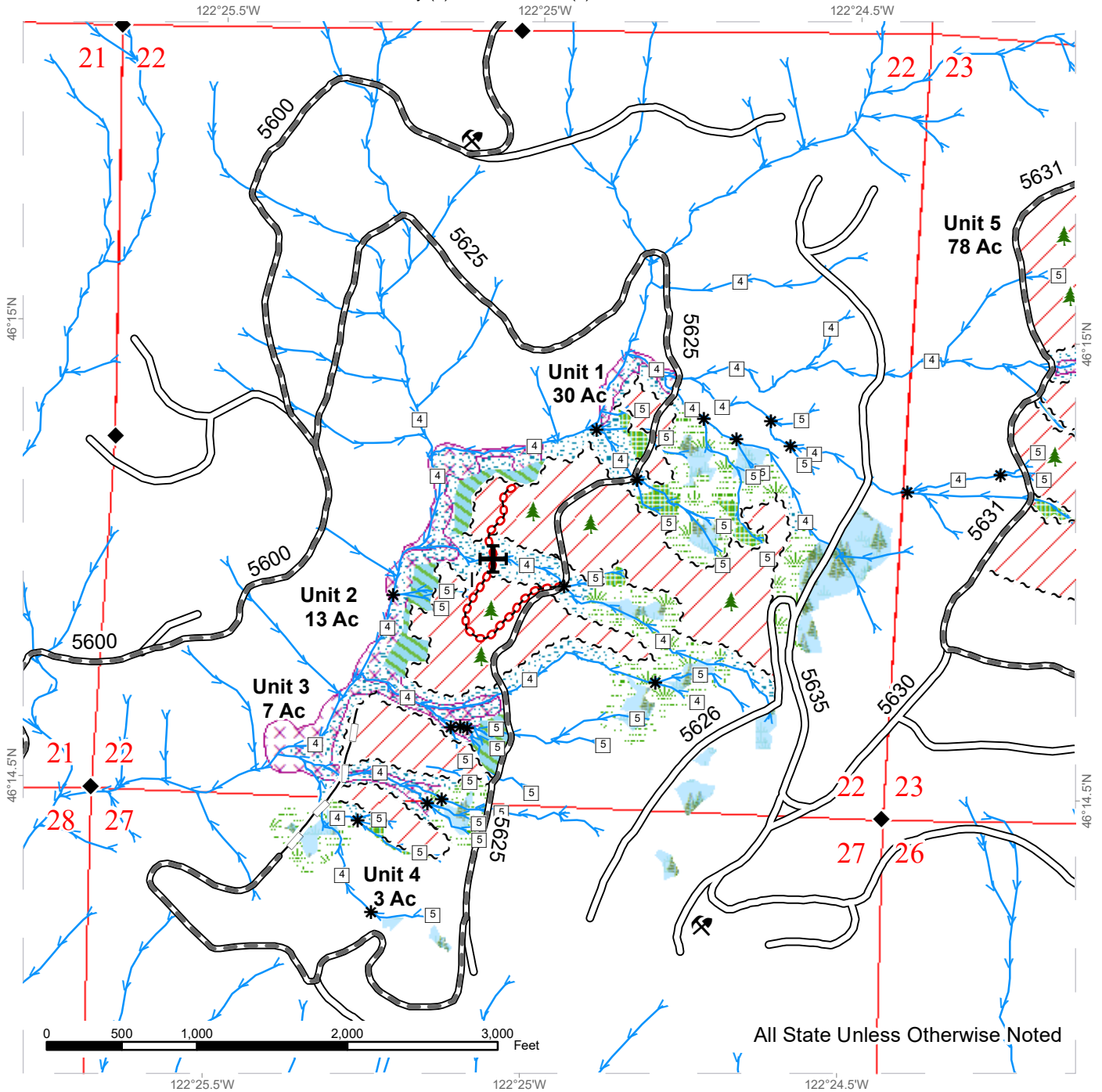
**SPECIAL REMARKS:** This sale has approximately 267 MBF of High Quality 2 Saw DF, 315 MBF of High Quality 3 Saw DF, see cruise for details.

Logs scaled as white fir, grand fir, silver fir, noble fir or hemlock will be priced the same.

# TIMBER SALE MAP

**SALE NAME:** RED STAPLER VRH AND THIN  
**AGREEMENT #:** 30-105512  
**TOWNSHIP(S):** T9R3E  
**TRUST(S):** Common School and Indemnity (3), Normal School (8)

**REGION:** Pacific Cascade Region  
**COUNTY(S):** Cowlitz  
**ELEVATION RGE:** 2200-4000



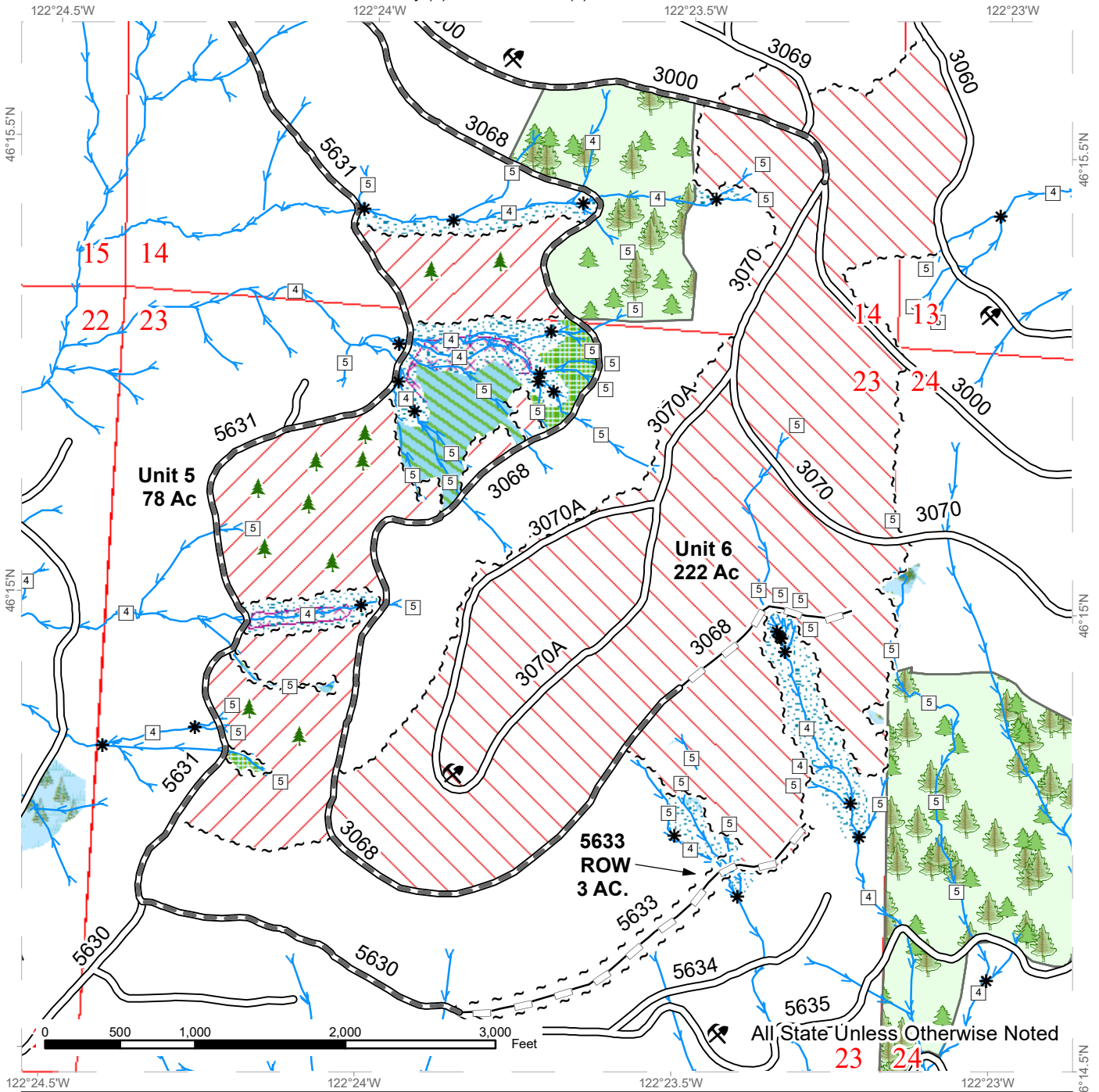
All State Unless Otherwise Noted

	Variable Retention Harvest		Potentially Unstable Slopes		Streams
	Non-Tradeable Leave Clump		Sale Boundary Tags		Stream Type
	Leave Tree Area		Existing Roads		Stream Type Break
	Riparian Mgt Zone		Required Pre-Haul Maintenance		Survey Monument
	Forested Wetland		Optional Reconstruction		Leave Tree Area <1/4-acre
	Wetland Mgt Zone		Required Abandonment		Culvert Removal

# TIMBER SALE MAP

**SALE NAME:** RED STAPLER VRH AND THIN  
**AGREEMENT #:** 30-105512  
**TOWNSHIP(S):** T9R3E  
**TRUST(S):** Common School and Indemnity (3), Normal School (8)

**REGION:** Pacific Cascade Region  
**COUNTY(S):** Cowlitz  
**ELEVATION RGE:** 2200-4000



All State Unless Otherwise Noted

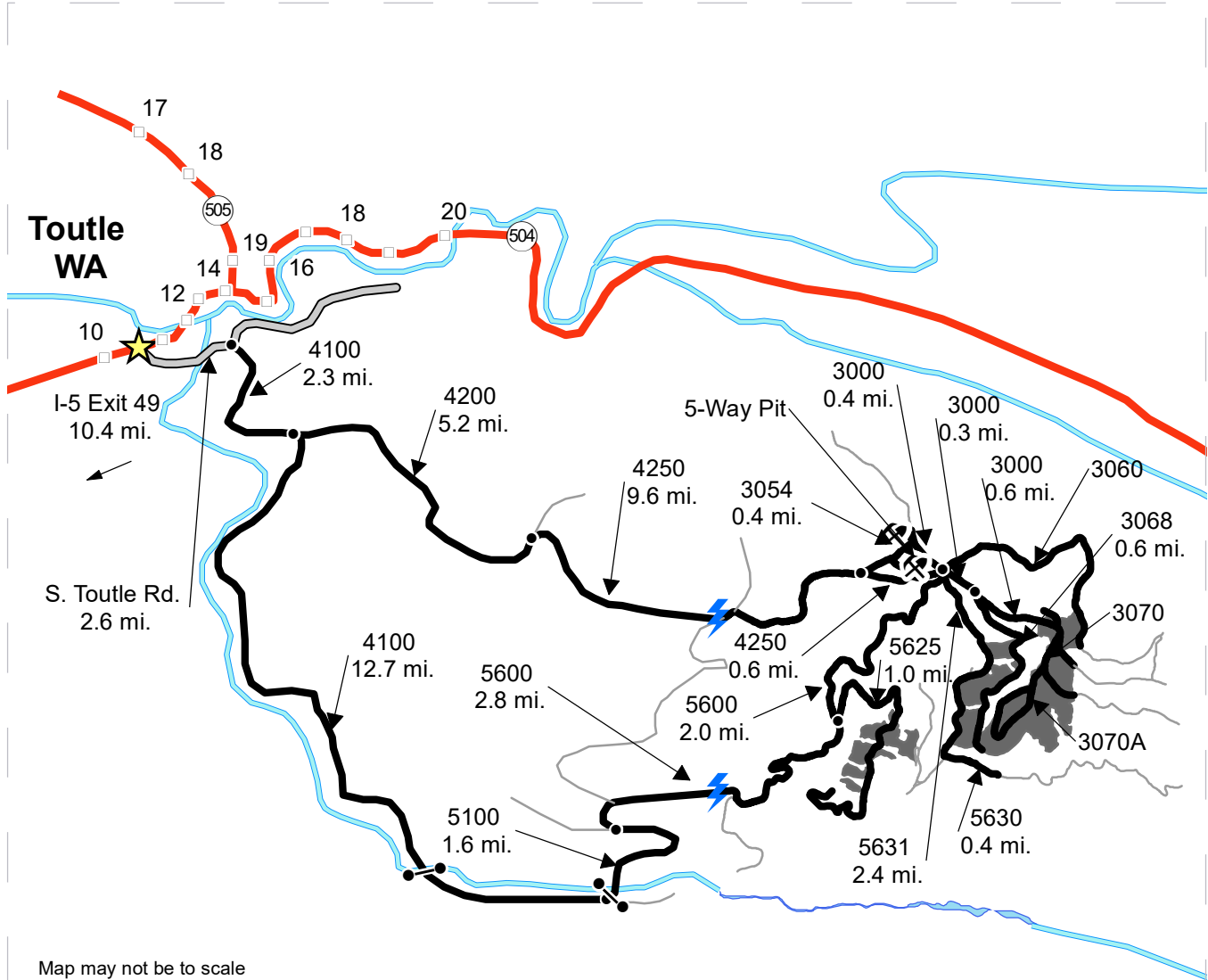
	Variable Retention Harvest		Potentially Unstable Slopes		Streams
	Variable Density Thinning		Old Growth		Stream Type
	Non-Tradeable Leave Clump		Sale Boundary Tags		Stream Type Break
	Leave Tree Area		Right of Way Tags		Leave Tree Area <1/4-acre
	Riparian Mgt Zone		Existing Roads		Required Pre-Haul Maintenance
	Forested Wetland		Optional Reconstruction		
	Wetland Mgt Zone				



# DRIVING MAP

**SALE NAME:** RED STAPLER VRH AND THIN  
**AGREEMENT#:** 30-105512  
**TOWNSHIP(S):** T9R3E  
**TRUST(S):** Common School and Indemnity (3), Normal School (8)

**REGION:** Pacific Cascade Region  
**COUNTY(S):** Cowlitz  
**ELEVATION RGE:** 2200-4000



Map may not be to scale

- Timber Sale Unit
- Haul Route
- Other Road
- Milepost Markers
- Distance Indicator
- Gate (ABA)
- Rock Pit
- Town

**DRIVING DIRECTIONS:**

From Exit 49 off I-5, follow SR 504 east for 10.4 miles. Turn right onto South Toutle Rd. and follow for 2.6 miles to the 4100. Continue on the 4100 for 2.3 miles to the 4200 junction.

Units 1-4: Continue on the 4100 from the 4200 junction for 12.7 miles and then turn left on the 5100. Follow the 5100 for 1.6 miles and turn right onto the 5600. After following the 5600 for 2.8 miles turn right onto the 5625, after 1 mile Unit 1 will be on the right. Units 2-5 will follow Unit 1 over the next 0.7 miles on the right side of the road.

Unit 5: From the 5625 junction continue on the 5600 for 2.0 miles to the 5-way. At the 5 way turn right onto the 3000 and follow for 0.3 miles. Turn right onto the 3068, after 0.6 miles Unit 5 will be on the right.

Unit 6: From the 3068 junction continue on the 3000 for 0.6 miles. Unit 6 will be on the right.

5-Way Pit: From the 5-way continue straight on the 3000 west for 0.4 miles and turn left onto the 3054, after 0.4 miles the road ends in the pit.

5-Way: The 5-Way can also be reached by Turning left onto the 4200 from the 4100 and following for 5.2 miles to the 4250 Junction. Turn right onto the 4250 and follow for 9.5 miles.

5633 ROW: From the 5-way turn right onto the 5600 and immediately stay to the left to continue onto the 5631. Follow for 2.4 miles then turn left onto the 5630. After 0.4 miles the 5633 will be on the left.







TIMBER NOTICE OF SALE

SALE NAME: RUSTY RIDGE 2024 VRH & VDT

AGREEMENT NO: 30-103588

AUCTION: November 14, 2023 starting at 10:00 a.m., COUNTY: Grays Harbor South Puget Sound Region Office, Enumclaw, WA

SALE LOCATION: Sale located approximately 7 miles east of Porter, WA.

PRODUCTS SOLD AND SALE AREA:

All timber, except snags and down timber existing more than 5 years from the day of sale, bounded by the following: white Timber Sale Boundary tags, timber type change marked with pink flagging, and the C-Line in Unit #1; white Timber Sale Boundary tags, timber type change marked with pink flagging, and the C-Line and C-1020 Road in Unit #2;

All timber as described in Schedule A bounded out by the following: white Timber Sale Boundary tags, timber type change marked with pink flagging, and the C-Line in Unit #3.

All forest products above located on part(s) of Sections 19 and 30 all in Township 17 North, Range 4 West, W.M., containing 52 acres, more or less.

CERTIFICATION: This sale is certified under the Sustainable Forestry Initiative® program Standard (cert no: BVC-SFIFM-018227)

ESTIMATED SALE VOLUMES AND QUALITY:

Table with columns: Species, Avg DBH, Ring Count, Total MBF, Total \$/MBF, and MBF by Grade (1P, 2P, 3P, SM, 1S, 2S, 3S, 4S, UT). Rows include Douglas fir, Hemlock, Red alder, Noble fir, Other Hardwood, Other Conifer, Redcedar, and Sale Total.

MINIMUM BID: \$458/MBF (est. value \$428,000.00) BID METHOD: Sealed Bids

PERFORMANCE SECURITY: \$100,000.00 SALE TYPE: MBF Scale

EXPIRATION DATE: June 30, 2024 ALLOCATION: Export Restricted

BIDDABLE SPECIES: Douglas fir

BID DEPOSIT: \$42,800.00 or Bid Bond. Said deposit shall constitute an opening bid at the appraised price.

HARVEST METHOD: Harvesting activities are estimated to be 100 percent ground based harvest. Ground based equipment limited to tracked equipment and 6-wheeled rubber tired skidders with over-the-tire tracks spanning both sets of rear tires on sustained slopes that are 45 percent or



## TIMBER NOTICE OF SALE

---

less. Yarding may be restricted during wet weather if rutting becomes excessive, per clause H-017.

### **ROADS:**

31.59 stations of optional prehaul maintenance. Designated maintenance on all roads used.

Road work activities will not be permitted from November 1 to April 30, nor on weekends or State recognized holidays, unless authority to do so is granted, in writing, by the Contract Administrator. If permission is granted to operate from November 1 to April 30, a maintenance plan is required per Road Plan clause 1-26.

The hauling of forest products will not be permitted from November 1 to April 30, nor on weekends or State recognized holidays, unless authorized in writing by the Contract Administrator. Due to the short contract term, permission to operate between November 1 and April 30 will be permitted, dependent upon weather, with a maintenance plan in place to protect water, soil, roads, and other forest assets.

### **ACREAGE DETERMINATION**

#### **CRUISE METHOD:**

Acreeage was determined by traversing boundaries by GPS in all units, and length times width for existing roads in Units #1 and #2. GPS data files are available at DNR's website for timber sale auction packets. See cruise narrative for cruise method.

### **FEES:**

\$17,510.00 is due on day of sale. \$9.00 per MBF is due upon removal. These are in addition to the bid price.

### **SPECIAL REMARKS:**

This sale is part of a research project in partnership with the Forest Service. Unit #1 includes ten group cuts of 0.4-1.8 acres each, labeled as G1-G10. Unit #2 includes five patch cuts of 0.9-3.8 acres each, labeled as P1-P5. There are no leave trees within the group or patch cut areas. Unit #3 is a thinning per Schedules A and B.

Purchaser is required to fell 15 trees for down woody debris, and create 10 snags within the RMZ thinning for Unit #3 (VDT). See Schedule A.

No equipment shall operate within 50 feet of the 100-year floodplain or ordinary high water mark of the stream, nor within 25 feet of the white Timber Sale Boundary tags within the Equipment Exclusion Zone in Unit #3 where shown on the Timber Sale map.

There are permanent research plots throughout the units marked with white, round, plastic stakes and aluminum tags on trees. Trees with aluminum tags may be removed, but the white plastic stakes shall be protected from disturbance.

Due to the research schedule requirements, the operation window for this sale is shorter than usual - December 1, 2023 through June 30, 2024.

Purchaser shall cut all stems 6 feet tall and greater within Units #1 and #2, leaving a stump no more than 12 inches in height.

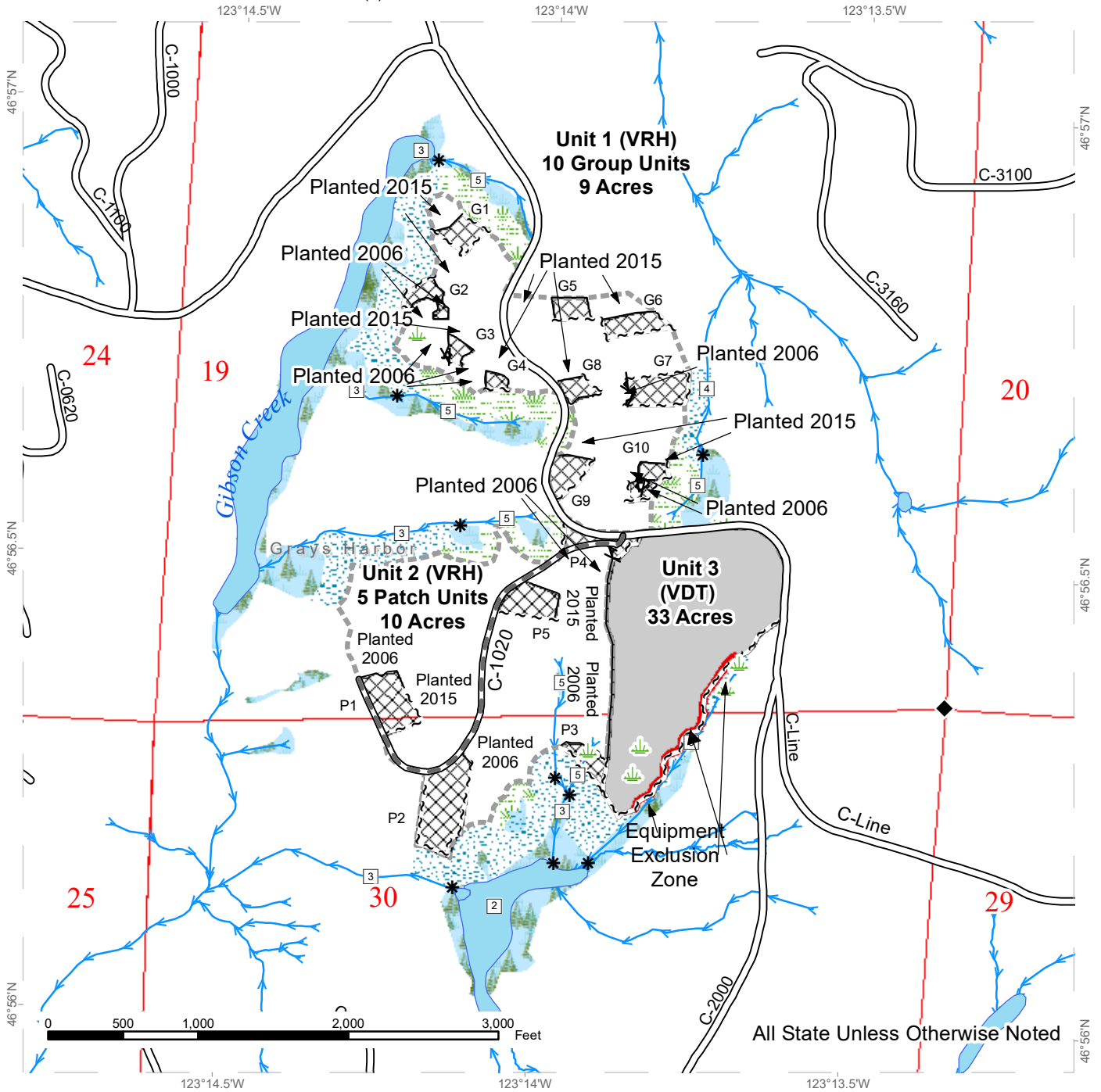
Note to cruisers and appraisers: Please refrain from leaving pink, orange, or blue flagging from your cruises in or around the sale area to avoid confusion with DNR's marking. Additionally, for the safety of the public, please remove from roads and trails all string from string boxes used during appraising or cruising this sale.



# TIMBER SALE MAP

**SALE NAME:** RUSTY RIDGE 2024 VRH AND VDT  
**AGREEMENT #:** 30-103588  
**TOWNSHIP(S):** T17R4W  
**TRUST(S):** State Forest Purchase (2)

**REGION:** South Puget Sound Region  
**COUNTY(S):** Grays Harbor  
**ELEVATION RGE:** 1218-1371



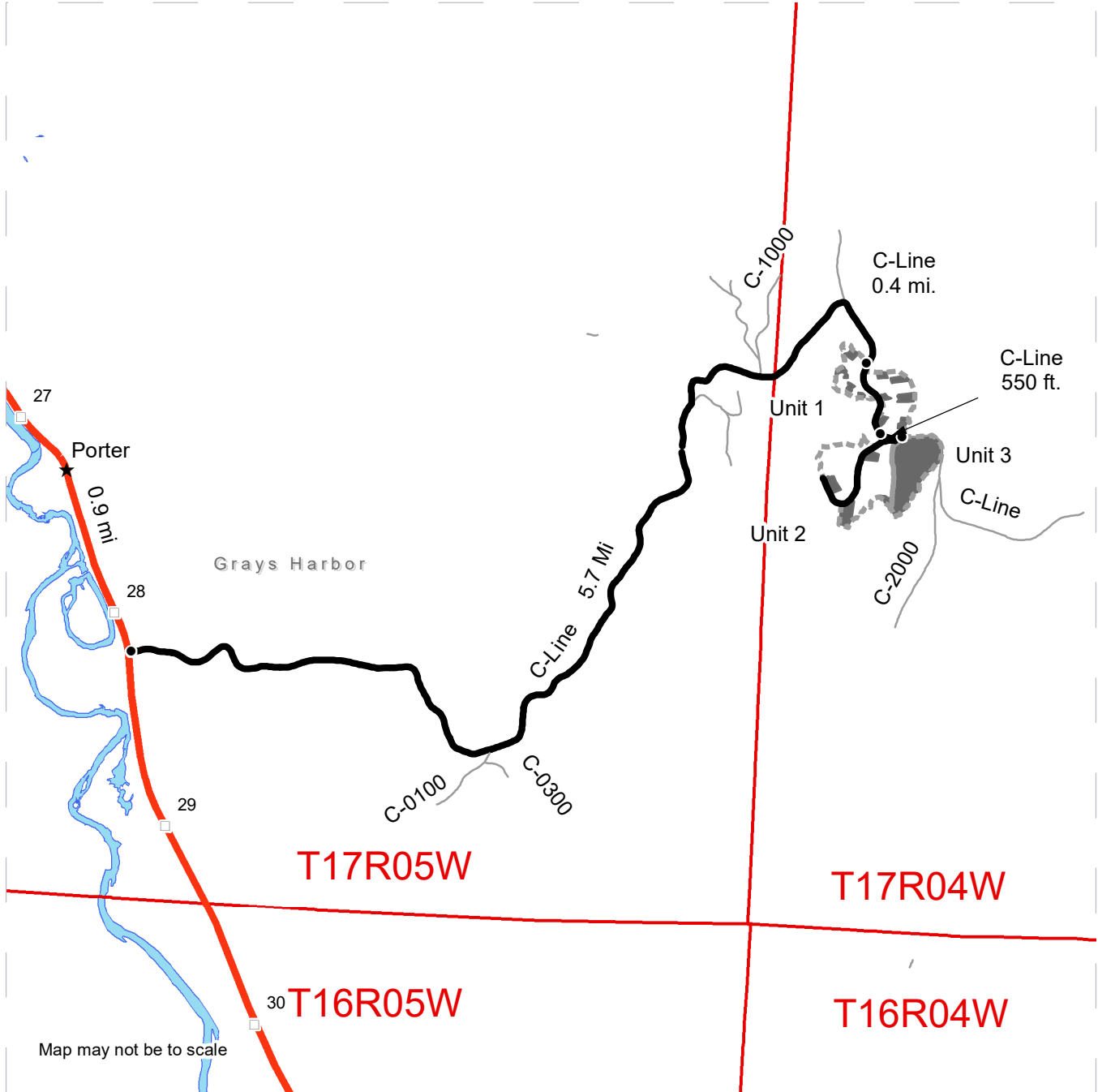
All State Unless Otherwise Noted

VRH (patch & groups)	Existing Roads	Survey Monument
Sale Area	Required Pre-Haul Maintenance	Wetland Mgt Zone
Equipment Exclusion Zone	Streams	
Riparian Mgt Zone	Stream Type	
Forested Wetland	Stream Type Break	
Wetland Mgt Zone		
Open Water		

# DRIVING MAP

**SALE NAME:** RUSTY RIDGE 2024 VRH AND VDT  
**AGREEMENT#:** 30-103588  
**TOWNSHIP(S):** T17R4W  
**TRUST(S):** State Forest Purchase (2)

**REGION:** South Puget Sound Region  
**COUNTY(S):** Grays Harbor  
**ELEVATION RGE:** 1218-1371



Map may not be to scale

	Timber Sale Unit
	Highway
	Haul Route
	Other Road
	Milepost Markers
	Distance Indicator
	Town

**DRIVING DIRECTIONS:**

"From US Highway 12 (milepost 28), turn East onto the C-LINE and follow for 5.7 miles Unit 1.  
 Continue following the C-Line for 0.4 mile to Unit 2  
 Continue following the C-Line for 550 ft. to Unit 3."





TIMBER NOTICE OF SALE

SALE NAME: LICORICE ROOT

AGREEMENT NO: 30-103624

AUCTION: November 14, 2023 starting at 10:00 a.m., COUNTY: Mason South Puget Sound Region Office, Enumclaw, WA

SALE LOCATION: Sale located approximately 14 miles northwest of Hoodspport, WA

PRODUCTS SOLD AND SALE AREA:

All timber, except trees marked with blue paint or bounded out by yellow leave tree area tags, snags, and down wood greater than 5 years from the day of the sale, bounded by the following: white Timber Sale Boundary tags and the 2580 Road in Unit #1; white Timber Sale Boundary tags, the 2580 Road, and private property marked with yellow USFS tags and pink ribbon in Unit #2; white Timber Sale Boundary tags, timber type change marked with pink flagging, private property marked with yellow USFS tags and pink ribbon in Unit #3;

All timber bounded by orange Right of Way tags in Unit #4;

All forest products above located on part(s) of Sections 3 and 4 all in Township 24 North, Range 3 West, W.M., containing 111 acres, more or less.

CERTIFICATION: This sale is certified under the Sustainable Forestry Initiative® program Standard (cert no: BVC-SFIFM-018227)

ESTIMATED SALE VOLUMES AND QUALITY:

Table with columns: Species, Avg DBH, Ring Count, Total MBF, and MBF by Grade (1P, 2P, 3P, SM, 1S, 2S, 3S, 4S, UT). Rows include Douglas fir, Hemlock, Redcedar, Red alder, Cottonwood, and Sale Total.

MINIMUM BID: \$1,040,000.00 BID METHOD: Sealed Bids

PERFORMANCE SECURITY: \$100,000.00 SALE TYPE: Lump Sum

EXPIRATION DATE: October 31, 2026 ALLOCATION: Export Restricted

BID DEPOSIT: \$104,000.00 or Bid Bond. Said deposit shall constitute an opening bid at the appraised price.

HARVEST METHOD: Harvest activities are estimated to be 80 percent uphill cable, 15 percent downhill cable and 5 percent ground based harvest. Cable and ground based equipment, with self-leveling equipment limited to sustained slopes of 60 percent or less, ground based equipment limited to sustained slopes of 45 percent or less and tracked ground based equipment limited to sustained slopes of 35 percent or less. Yarding may be restricted during wet weather if rutting becomes excessive, per clause H-017.



## TIMBER NOTICE OF SALE

---

Falling, yarding, timber haul will not be permitted on weekends or State recognized holidays, unless approved in writing by the Contract Administrator.

### **ROADS:**

45.34 stations of optional construction. 30.71 stations of optional reconstruction. 274.14 stations of required prehaul maintenance. 292.25 stations of post-haul maintenance. 31.37 stations of abandonment, if constructed. 24.11 stations of abandonment, if used. Purchaser maintenance on the 2510, 2572, 2573 and 2580 roads and Spurs 1 and 2. Designated maintenance on all other roads used.

Rock for this proposal can be obtained from the State Owned 2510 Pit at no cost to the Purchaser or any commercial source at the Purchaser's expense. Rock source development is to be per Section 6 in the Road Plan and according to the Rock Source.

Operation of road construction equipment and rock haul will not be permitted on weekends or State recognized holidays, unless authority to do so is granted in writing by the Contract Administrator.

### **ACREAGE DETERMINATION**

**CRUISE METHOD:** Acreage was determined by traversing boundaries by GPS and by multiplying length times width. GPS data files are available at DNR's website for timber sale packets. See cruise narrative for cruise method.

**FEES:** \$60,350.00 is due on day of sale. \$9.00 per MBF is due upon removal. These are in addition to the bid price.

**SPECIAL REMARKS:** This sale contains Douglas-fir high quality poles and saw logs.

Tailhold restriction areas for slope stability protection are located near Units #1, #2, and #3.

Non-tradeable leave trees and clumps are located within Units #1, #2, and #3.

Full bench construction is associated with portions of Spurs 1 and 2 per Road Plan clause 4-12.

Downhill yarding within Unit #2 and #3 is likely necessary.

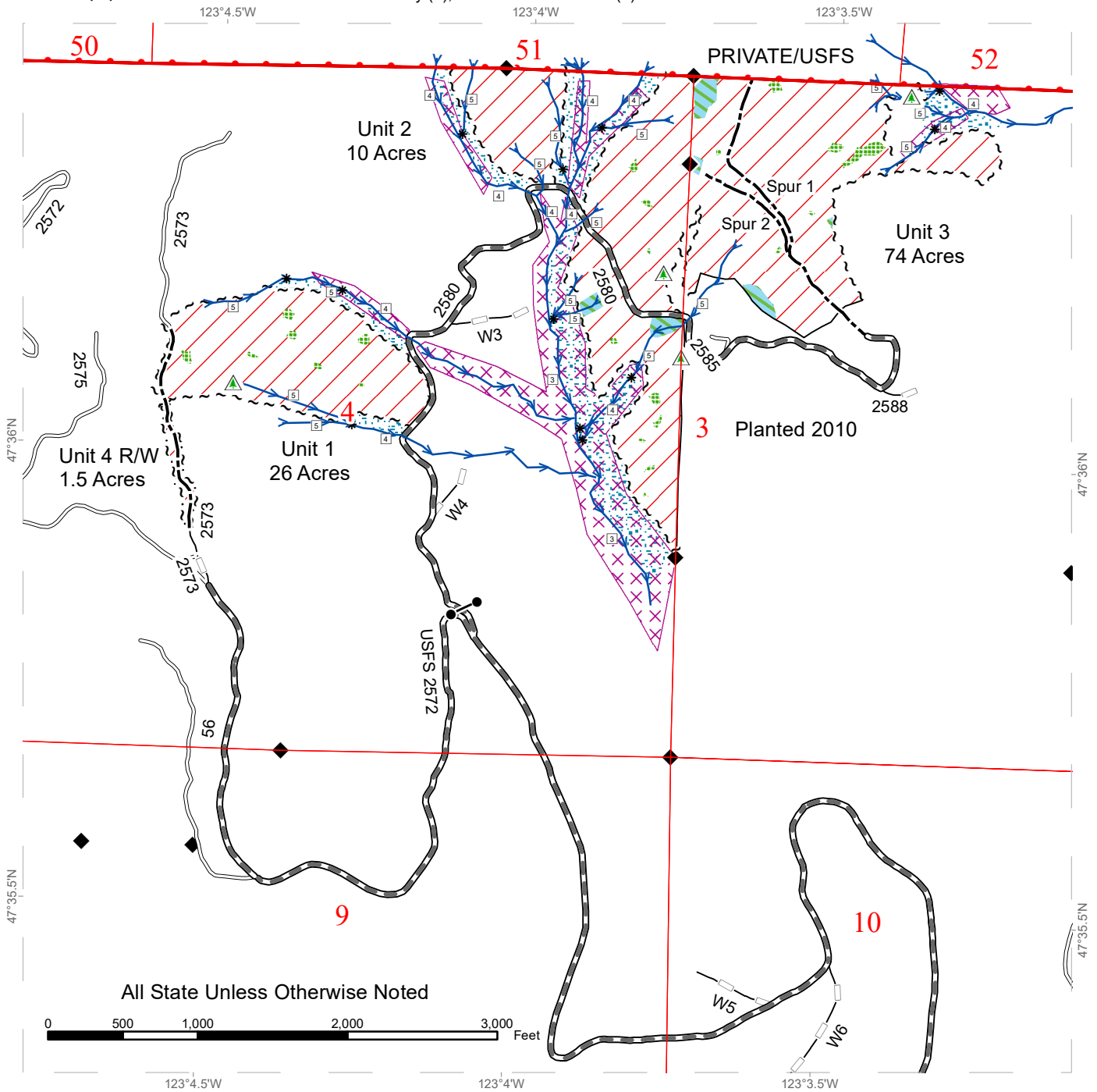
Note to cruisers and appraisers: Please refrain from leaving pink, orange or blue flagging from your cruises in or around the sale area to avoid confusion with DNR's marking. Additionally, for the safety of the public, please remove from roads all string from string boxes used during appraising or cruising this sale.

See map for gate locations. Gate keys may be obtained by contacting the South Puget Sound Region Office at 360-825-1631 or by contacting Jeremy Homer at 360-520-1409.

# TIMBER SALE MAP

**SALE NAME:** LICORICE ROOT  
**AGREEMENT #:** 30-103624  
**TOWNSHIP(S):** T24R3W  
**TRUST(S):** Common School and Indemnity (3), State Forest Transfer (1)

**REGION:** South Puget Sound Region  
**COUNTY(S):** Mason  
**ELEVATION RGE:** 1440-2560



## Legend

Variable Retention Harvest	Existing Roads	Streams	Non-Tradeable Leave Clump
Sale Boundary Tags	Required Pre-Haul Maintenance	Stream Type	Riparian Mgt Zone
Right of Way Tags	Optional Construction	Stream Type Break	Tailhold Restriction Area
Timber Type Change	Optional Reconstruction	Survey Monument	Public Land Survey Townships
	Gates (383 Master)	Non-Tradeable Leave Trees	Public Land Survey Sections
		Leave trees	







TIMBER NOTICE OF SALE

SALE NAME: Q JUPITER

AGREEMENT NO: 30-104762

AUCTION: November 14, 2023 starting at 10:00 a.m., Northeast Region Office, Colville, WA

COUNTY: Okanogan

SALE LOCATION: Sale located approximately 11 miles west of Loomis, WA.

PRODUCTS SOLD AND SALE AREA:

All conifer species except for leave trees banded with yellow paint, leave trees bounded by yellow leave tree area tags and two standing snags per acre in Units 1, 3, 4, 5 and 6 bounded by white timber sale boundary tags; All green conifer species except for leave trees banded with yellow paint and leave trees bounded by yellow leave tree area tags in Unit 2 bounded by white timber sale boundary tags; and all right of way timber bounded by orange right of way boundary tags.

All forest products above located on part(s) of Sections 6, 7, 18 and 19 all in Township 39 North, Range 25 East, Sections 1, 12 and 24 all in Township 39 North, Range 24 East, W.M., containing 219 acres, more or less.

CERTIFICATION: This sale is certified under the Sustainable Forestry Initiative® program Standard (cert no: BVC-SFIFM-018227)

ESTIMATED SALE VOLUMES AND QUALITY:

Table with columns: Species, Avg DBH, Ring Count, Total MBF, and MBF by Grade (P, SM, 1S, 2S, 3S, 4S, 5S, 6S, UT). Rows include Douglas fir, Spruce, Lodgepole, Alpine fir, Larch, and Sale Total.

MINIMUM BID: \$343,000.00

BID METHOD: Sealed Bids

PERFORMANCE SECURITY:

\$68,600.00

SALE TYPE: Lump Sum

EXPIRATION DATE: November 30, 2025

ALLOCATION: Export Restricted

BID DEPOSIT: \$34,300.00 or Bid Bond. Said deposit shall constitute an opening bid at the appraised price.

HARVEST METHOD: Track skidder, Rubber tired skidder, and Ground based equipment. Falling and Yarding will not be permitted from March 15 to June 1 unless authorized in writing by the Contract Administrator due to spring breakup. Falling and yarding will not be permitted from May 1 to August 1 in Unit 2 unless authorized in writing by the State due to wildlife timing restrictions.

ROADS: 16.21 stations of required construction. 341.72 stations of required prehaul maintenance. 29.54 stations of abandonment. 60.00 stations of decommissioning. Road construction will not be permitted from March 15 to June 1 unless authorized in writing by the



## TIMBER NOTICE OF SALE

Contract Administrator due to spring breakup. Road construction will not be permitted from May 1 to August 1 in Unit 2 unless authorized in writing by the State due to wildlife timing restrictions. The hauling of forest products will not be permitted from March 15 to June 1 unless authorized in writing by the Contract Administrator due to spring breakup. The hauling of forest products will not be permitted from May 1 to August 1 in Unit 2 unless authorized in writing by the State due to wildlife timing restrictions.

### **ACREAGE DETERMINATION**

**CRUISE METHOD:** Acreage determined using GPS methods. Acreage shown above is net harvest acres in harvest units. All species: 7.0 - 17.5 inches dbh has minimum top of 4.6 inch dib. All species 17.6 inches and greater dbh have a minimum top dib of 40% of dob at 16 feet or a 6 inch top whichever is greater.

**FEES:** \$39,457.00 is due on day of sale. \$9.00 per MBF is due upon removal. These are in addition to the bid price.

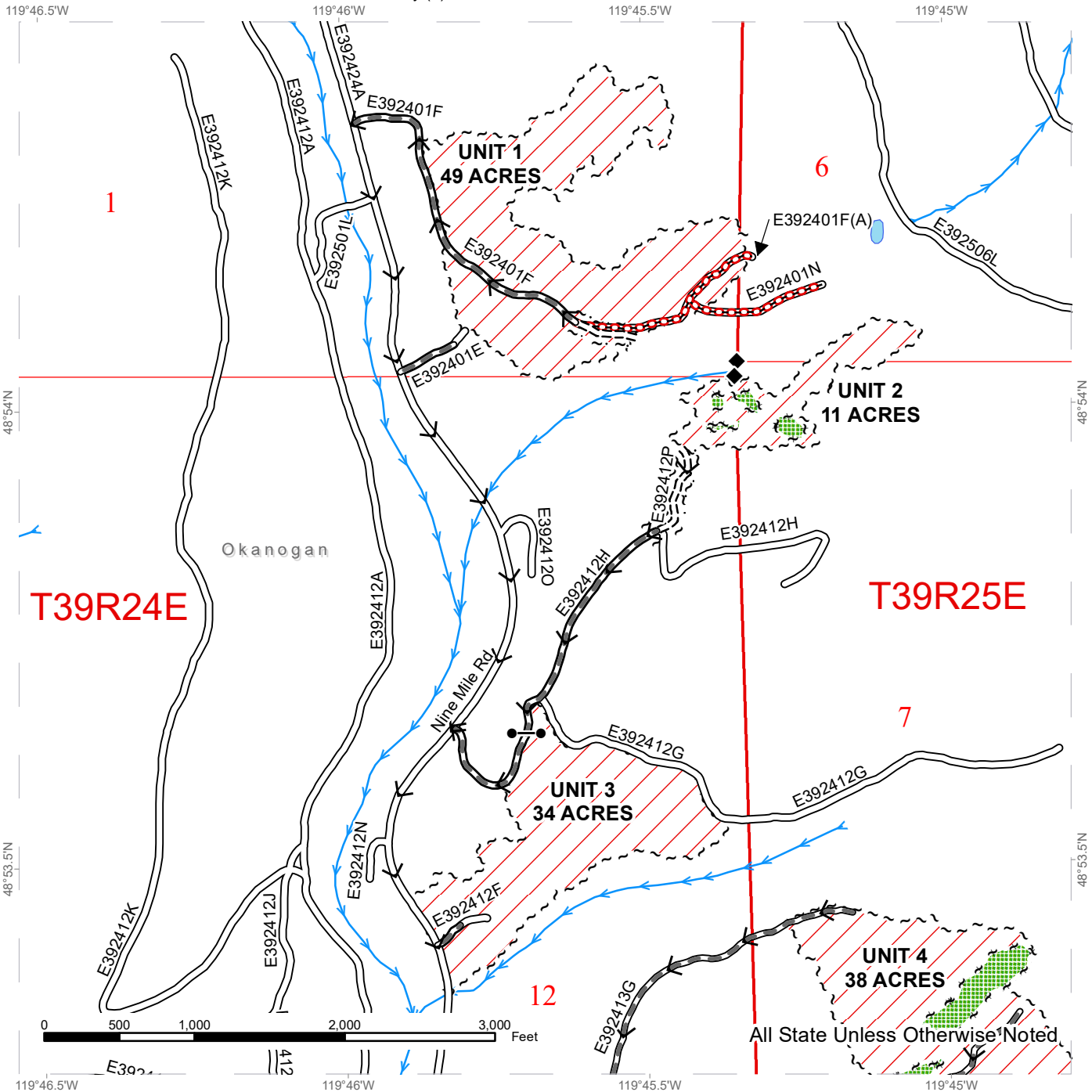
**SPECIAL REMARKS:** Locked gates restrict access to Units 2 and 4. Contact the Northeast Region Office at (509) 684-7474 for access.



# TIMBER SALE MAP

**SALE NAME:** Q JUPITER  
**AGREEMENT #:** 30-104762  
**TOWNSHIP(S):** T39R24E, T39R25E  
**TRUST(S):** Common School and Indemnity (3)

**REGION:** Northeast Region  
**COUNTY(S):** Okanogan  
**ELEVATION RGE:** 4200-5600



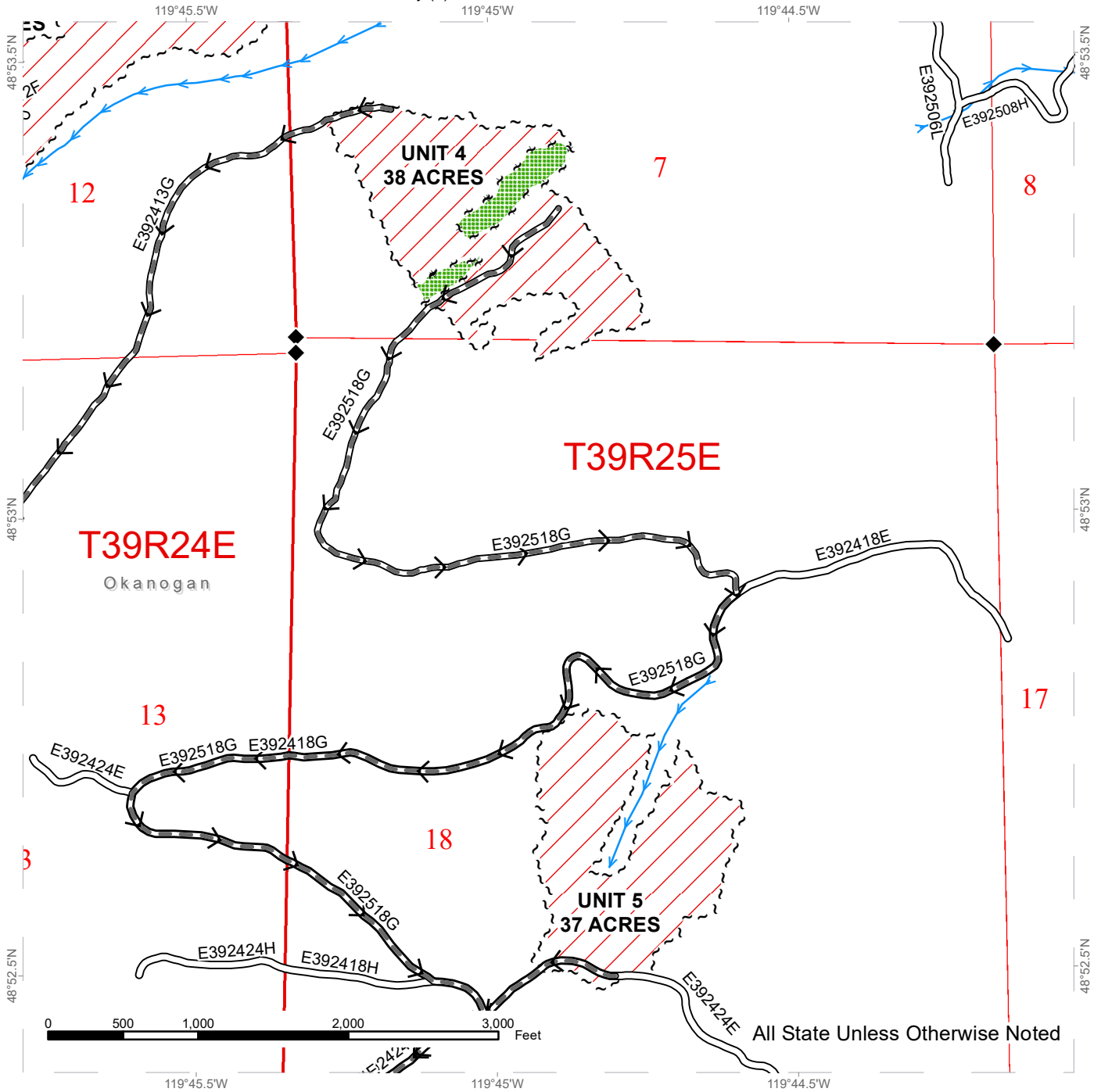
Public Land Survey Sections	Leave Tree Area	Streams
DNR Managed Lands	Haul Route	Survey Monument
Variable Retention Harvest	Existing Roads	Gate
Sale Boundary Tags	Required Pre-Haul Maintenance	
Leave Tree Tags	Required Construction	
Right of Way Tags = 1 acre	Required Abandonment	



# TIMBER SALE MAP

**SALE NAME:** Q JUPITER  
**AGREEMENT #:** 30-104762  
**TOWNSHIP(S):** T39R24E, T39R25E  
**TRUST(S):** Common School and Indemnity (3)

**REGION:** Northeast Region  
**COUNTY(S):** Okanogan  
**ELEVATION RGE:** 4200-5600

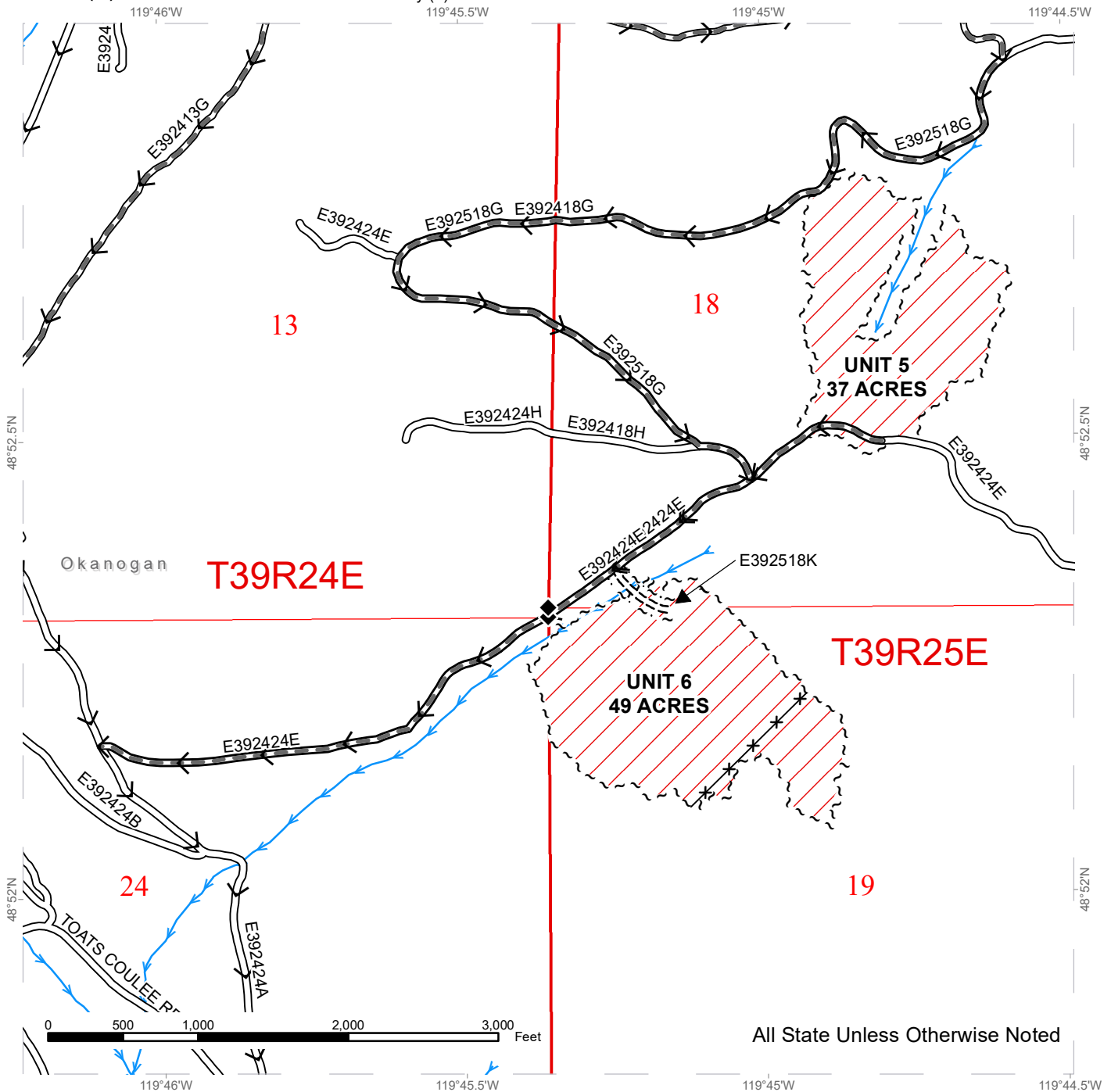


	Public Land Survey Sections		Haul Route		Streams
	DNR Managed Lands		Existing Roads		Survey Monument
	Variable Retention Harvest		Required Pre-Haul Maintenance		
	Sale Boundary Tags				
	Leave Tree Tags				
	Leave Tree Area				

# TIMBER SALE MAP

**SALE NAME:** Q JUPITER  
**AGREEMENT #:** 30-104762  
**TOWNSHIP(S):** T39R24E, T39R25E  
**TRUST(S):** Common School and Indemnity (3)

**REGION:** Northeast Region  
**COUNTY(S):** Okanogan  
**ELEVATION RGE:** 4200-5600



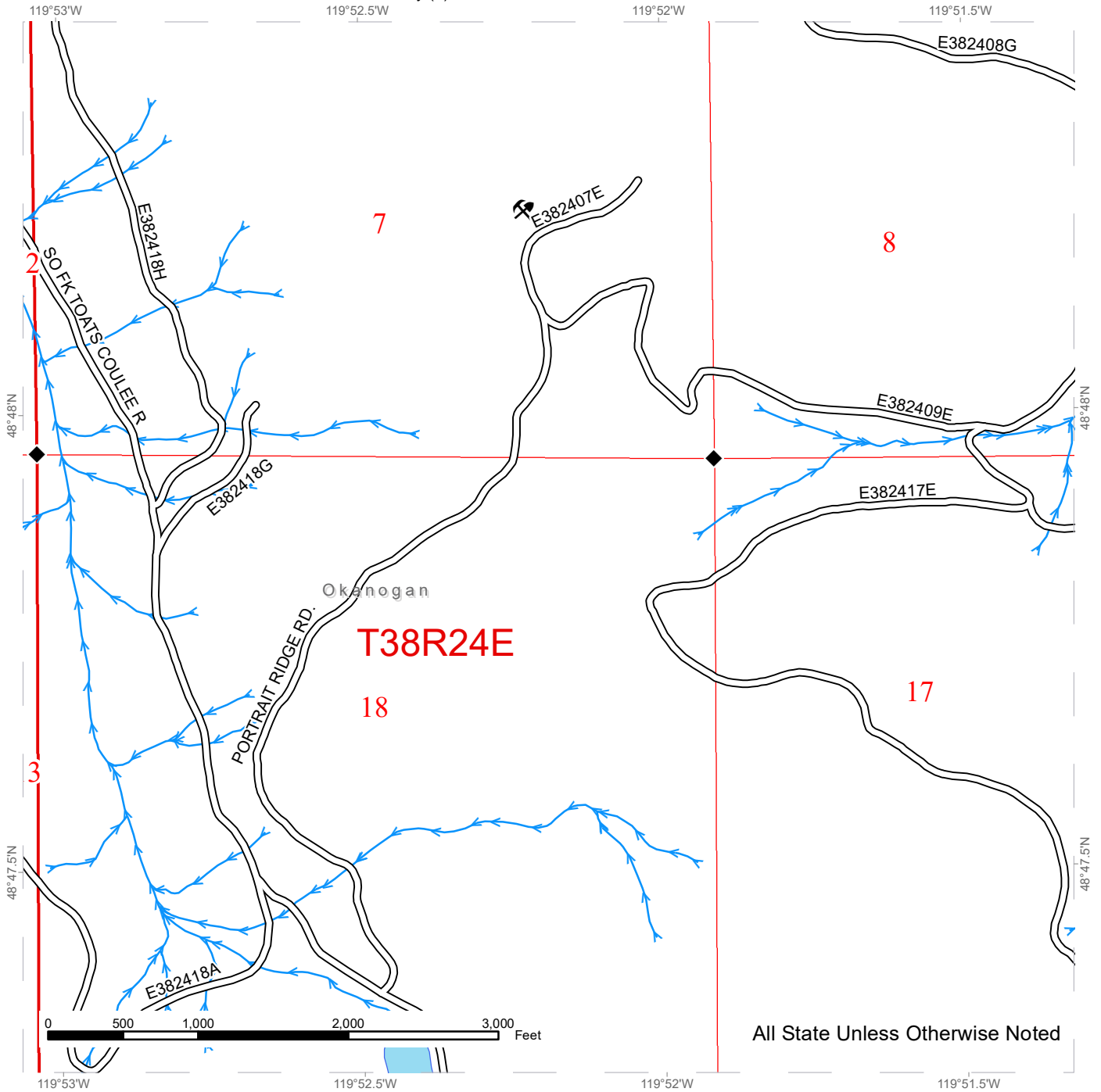
All State Unless Otherwise Noted

Public Land Survey Sections	Haul Route	Streams
DNR Managed Lands	Existing Roads	Survey Monument
Variable Retention Harvest	Required Pre-Haul Maintenance	Gate
Sale Boundary Tags	Required Construction	
Right of Way Tags = 1 acre	Fence	


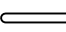



# TIMBER SALE MAP

**SALE NAME:** Q JUPITER  
**AGREEMENT #:** 30-104762  
**TOWNSHIP(S):** T39R24E, T39R25E  
**TRUST(S):** Common School and Indemnity (3)

**REGION:** Northeast Region  
**COUNTY(S):** Okanogan  
**ELEVATION RGE:** 4200-5600



All State Unless Otherwise Noted

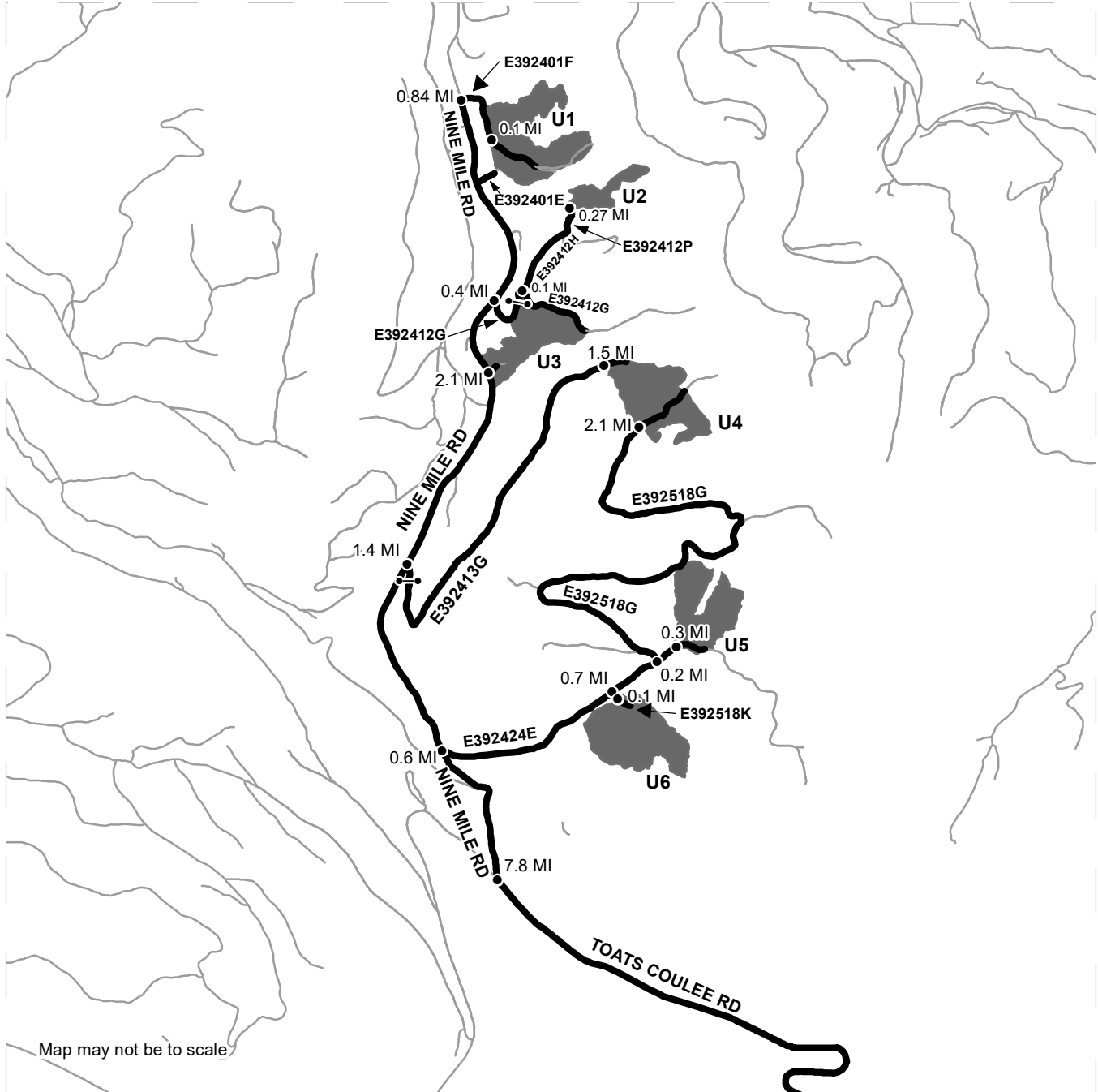
 Public Land Survey Sections	 Existing Roads
 DNR Managed Lands	 Survey Monument
	 Rock Source



# DRIVING MAP

**SALE NAME:** Q JUPITER  
**AGREEMENT#:** 30-104762  
**TOWNSHIP(S):** T39R24E, T39R25E  
**TRUST(S):** Common School and Indemnity (3)

**REGION:** Northeast Region  
**COUNTY(S):** Okanogan  
**ELEVATION RGE:** 4200-5600



Map may not be to scale

	Timber Sale Unit
	Haul Route
	Other Route
	Distance Indicator
	Gate

**DRIVING DIRECTIONS:**

From Loomis, WA travel north on the Loomis-Oroville road for 2.1 miles and turn left on Toats Coulee road. Travel approximately 7.8 miles and turn right on Nine Mile road.

To access Units 4-6 travel 0.6 miles and turn right on E392424E. Travel 0.7 miles from the intersection and turn right on E392518K travel for 0.1 miles to access Unit 6.

To access Unit 5 travel 0.3 miles further up E392424E from the intersection of E392424E and E392518K.

To access Unit 4 travel 0.2 miles from the intersection of E392424E and E392518K on E392424E and Turn left on E392518G. Continue on E392518G for 2.1 miles. A second access to Unit 4 is 1.4 miles from the intersection of Toats Coulee road and Nine Mile road. Turn right on E392413G and travel 1.5 miles.

To access Unit 3 turn right onto Nine Mile road at the intersection of Toats Coulee road and Nine Mile road and travel 2.1 miles. A second access to Unit 3 is 0.4 miles further up Nine Mile road- turn right at E392412G and travel 0.1 miles.

The access to Unit 2 is 0.1 miles further up E392412G- take a left at the intersection of E392412G and E392412H and travel 0.27 miles and turn left at E392412P.

To access Unit 1 travel 0.84 miles further up Nine Mile road from the intersection of Nine Mile road and 392412G. Turn right at E392401F and travel 0.1 miles.



# DRIVING MAP

**SALE NAME:** Q JUPITER  
**AGREEMENT#:** 30-104762  
**TOWNSHIP(S):** T39R24E, T39R25E  
**TRUST(S):** Common School and Indemnity (3)

**REGION:** Northeast Region  
**COUNTY(S):** Okanogan  
**ELEVATION RGE:** 4200-5600



	Timber Sale Unit
	Other Route
	Haul Route
	Distance Indicator
	Gate
	Rock Source
	Town

**DRIVING DIRECTIONS:**

From Loomis, WA travel north on the Loomis-Oroville road for 2.1 miles and turn left on Toats Coulee road. Travel approximately 7.8 miles and turn right on Nine Mile road.

To access Units 4-6 travel 0.6 miles and turn right on E392424E. Travel 0.7 miles from the intersection and turn right on E392518K travel for 0.1 miles to access Unit 6.

To access Unit 5 travel 0.3 miles further up E392424E from the intersection of E392424E and E392518K.

To access Unit 4 travel 0.2 miles from the intersection of E392424E and E392518K on E392424E and Turn left on E392518G. Continue on E392518G for 2.1 miles. A second access to Unit 4 is 1.4 miles from the intersection of Toats Coulee road and Nine Mile road. Turn right on E392413G and travel 1.5 miles.

To access Unit 3 turn right onto Nine Mile road at the intersection of Toats Coulee road and Nine Mile road and travel 2.1 miles. A second access to Unit 3 is 0.4 miles further up Nine Mile road- turn right at E392412G and travel 0.1 miles.

The access to Unit 2 is 0.1 miles further up E392412G- take a left at the intersection of E392412G and E392412H and travel 0.27 miles and turn left at E392412P.

To access Unit 1 travel 0.84 miles further up Nine Mile road from the intersection of Nine Mile road and 392412G. Turn right at E392401F and travel 0.1 miles.





**TIMBER NOTICE OF SALE**

**SALE NAME:** *IN THE PIPELINE*

**AGREEMENT NO:** 30-104154

**AUCTION:** November 16, 2023 starting at 10:00 a.m., **COUNTY:** Pacific  
Pacific Cascade Region Office, Castle Rock, WA

**SALE LOCATION:** Sale located approximately 6 miles northeast of Lebam

**PRODUCTS SOLD AND SALE AREA:** All timber, except trees marked with blue paint, trees bound out by yellow "Leave Tree Area" tags, and all down timber existing 10 years prior to the day of sale, bounded by the following;

Unit 1, white "Timber Sale Boundary" tags with pink "Timber Harvest Boundary" flagging and reprod;

All forest products above located on part(s) of Sections 36 all in Township 13 North, Range 7 West, Sections 30 and 31 all in Township 13 North, Range 6 West, W.M., containing 96 acres, more or less.

**CERTIFICATION:** This sale is certified under the Sustainable Forestry Initiative® program Standard (cert no: BVC-SFIFM-018227)

**ESTIMATED SALE VOLUMES AND QUALITY:**

Species	Avg DBH	Ring Count	Total MBF	MBF by Grade								
				1P	2P	3P	SM	1S	2S	3S	4S	UT
Douglas fir	24.3	8	4,518			49	568		3,236	575	62	27
Red alder	15.6		594						291	105	197	
Maple	15.7		275						145	18	112	
Hemlock	17.2		269						177	65	25	2
Redcedar	26.2		183							182	1	
Spruce	23.6		66						30	32	2	2
Sale Total			5,905									

**MINIMUM BID:** \$1,975,000.00 **BID METHOD:** Sealed Bids

**PERFORMANCE SECURITY:** \$100,000.00 **SALE TYPE:** Lump Sum

**EXPIRATION DATE:** October 31, 2025 **ALLOCATION:** Export Restricted

**BID DEPOSIT:** \$197,500.00 or Bid Bond. Said deposit shall constitute an opening bid at the appraised price.

**HARVEST METHOD:** Cable, Cable-Assist, Shovel, and Track skidder. Harvesting activities are estimated to be 65 percent ground based yarding and 35 percent cable yarding. Ground based equipment is restricted to slopes of 45 percent and less, and shall operate only during dry soil conditions. Self-Leveling ground based yarding equipment will not be permitted on sustained slopes over 55 percent. Cable assist operations will not be permitted on slopes over 75 percent. 6 Wheeled skidder with tracks similar to ECO-TRACKS™, will not be permitted on sustained slopes over 40 percent. See Clause H-140 for further harvest requirements.



## TIMBER NOTICE OF SALE

---

**ROADS:** 43.65 stations of optional construction. 415.00 stations of required prehaul maintenance. Rock used in accordance with the quantities on the ROCK LIST may be obtained from the P&E Extension Quarry located in Section 29, T13N, R6W, WM. on state land at no charge to the Purchaser. Purchaser shall obtain written approval from the Contract Administrator for the use of material from any other source.

Rock used in accordance with the quantities on the ROCK LIST may be obtained from the P&E Extension Quarry stockpile(s) located in Section 29, T13N, R6W, WM. on state land at no charge to the Purchaser. Purchaser shall not remove additional yardage without prior written approval from the Contract Administrator. Other stockpiles may not be used without prior written approval from the Contract Administrator.

Rock used in accordance with the quantities on the ROCK LIST may be obtained from any commercial source at the Contractor's expense. Rock sources are subject to written approval by the Contract Administrator before their use. The hauling of forest products will not be permitted from November 1 to April 30 unless authorized in writing by the Contract Administrator.

### ACREAGE DETERMINATION

**CRUISE METHOD:** The sale acres were determined by GPS. The sale area was cruised using a variable plot cruise method.

**FEES:** \$100,385.00 is due on day of sale. \$9.00 per MBF is due upon removal. These are in addition to the bid price.

**SPECIAL REMARKS:** This sale contains approximately 568 MBF Special Mill DF, 490 MBF High Quality 2 Saw DF, 75 MBF high quality 3 saw DF. See Cruise for additional for additional information.

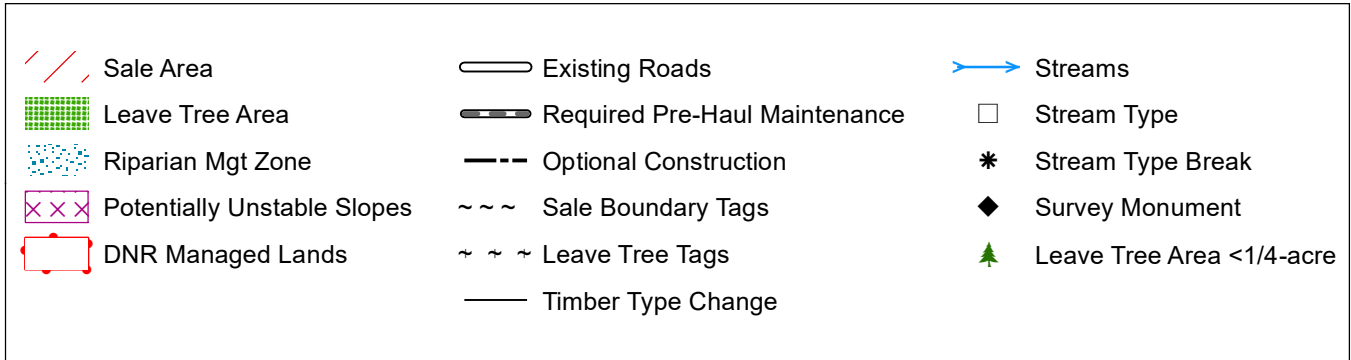
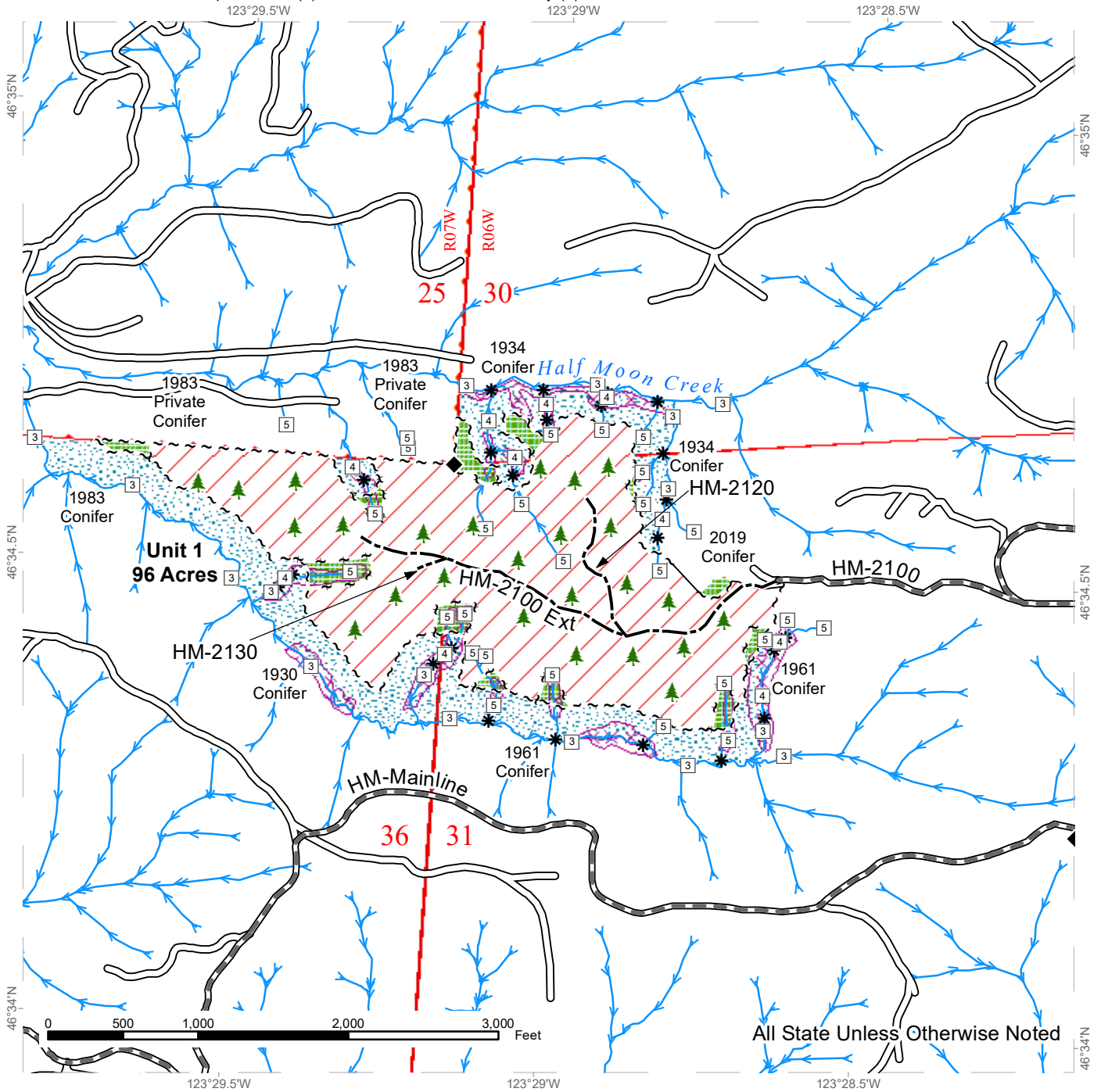
All trees 60 inches Diameter at Breast Height (DBH) and greater shall not be felled unless for safety reasons. If trees 60 inches DBH or greater needs to be felled for safety reasons, trees will be left where felled.



# TIMBER SALE MAP

**SALE NAME:** IN THE PIPELINE  
**AGREEMENT #:** 30-104154  
**TOWNSHIP(S):** T13R6W, T13R7W  
**TRUST(S):** Capitol Grant (7), Common School and Indemnity (3)

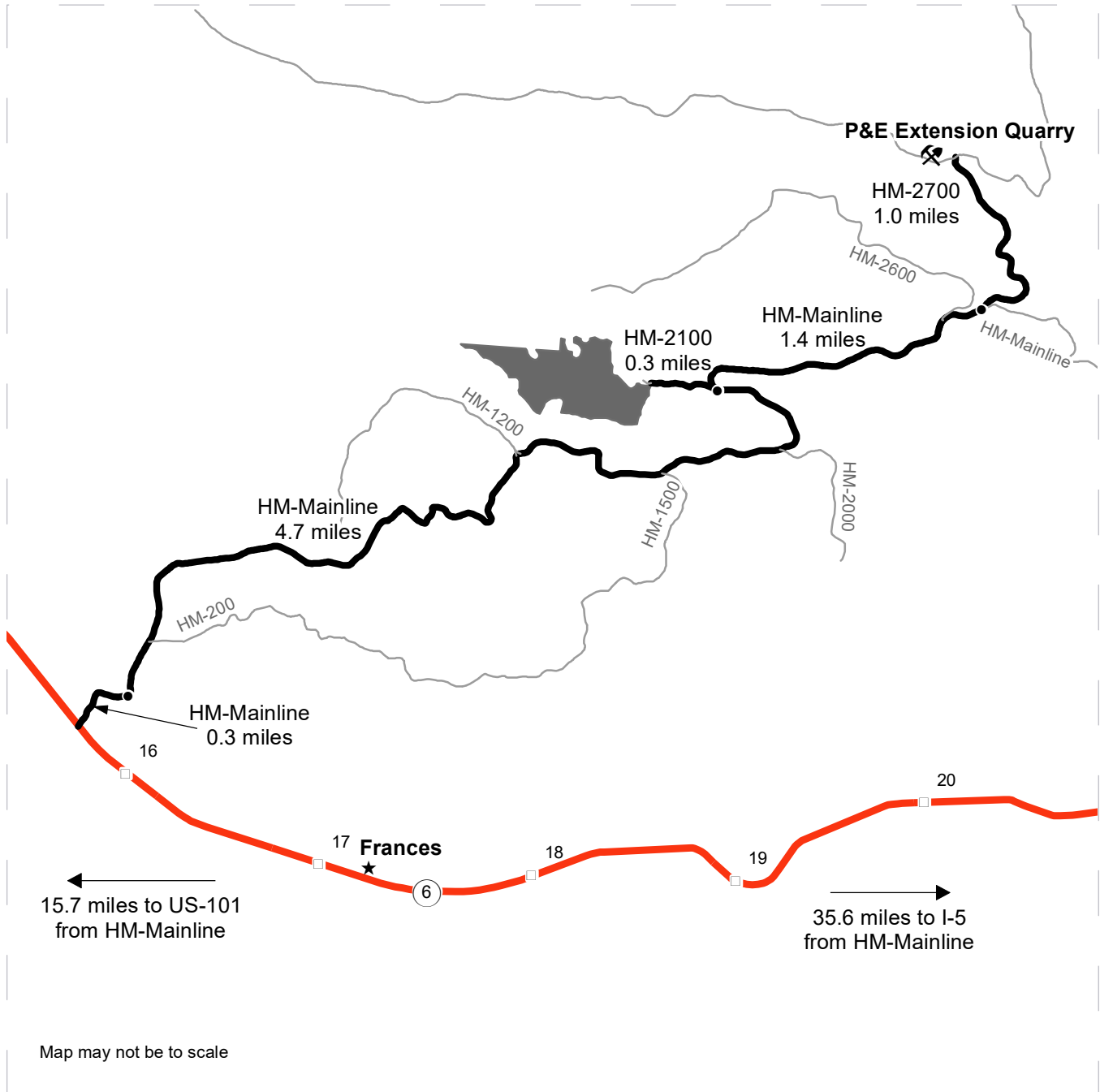
**REGION:** Pacific Cascade Region  
**COUNTY(S):** Pacific  
**ELEVATION RGE:** 520-880



# DRIVING MAP

**SALE NAME:** IN THE PIPELINE  
**AGREEMENT#:** 30-104154  
**TOWNSHIP(S):** T13R6W, T13R7W  
**TRUST(S):** Capitol Grant (7), Common School and Indemnity (3)

**REGION:** Pacific Cascade Region  
**COUNTY(S):** Pacific  
**ELEVATION RGE:** 520-880



<ul style="list-style-type: none"> <li><span style="display: inline-block; width: 20px; height: 10px; background-color: gray; margin-right: 5px;"></span> Timber Sale Unit</li> <li><span style="display: inline-block; width: 20px; height: 5px; background-color: red; margin-right: 5px;"></span> Highway</li> <li><span style="display: inline-block; width: 20px; border-bottom: 2px solid black; margin-right: 5px;"></span> Haul Route</li> <li><span style="display: inline-block; width: 20px; border-bottom: 1px solid gray; margin-right: 5px;"></span> Other Road</li> <li><span style="display: inline-block; width: 10px; height: 10px; border: 1px solid gray; margin-right: 5px;"></span> Milepost Markers</li> <li><span style="display: inline-block; width: 5px; height: 5px; background-color: black; margin-right: 5px;"></span> Distance Indicator</li> <li><span style="display: inline-block; width: 15px; height: 15px; border: 1px solid black; border-radius: 50%; margin-right: 5px;"></span> Rock Pit</li> <li><span style="display: inline-block; width: 0; height: 0; border-left: 5px solid transparent; border-right: 5px solid transparent; border-bottom: 10px solid black; margin-right: 5px;"></span> Town</li> </ul>	<p><b><u>DRIVING DIRECTIONS:</u></b></p> <p><b><u>To Unit 1:</u></b>                  At MM 15.7 on SR 6, head northeast on the HM-Mainline through a cattle guard. Drive 0.3 miles to the second cattle guard. Drive 4.7 miles to the HM-2100 and turn left. Drive 0.3 miles to <b>Unit 1</b> on the left.</p> <p><b><u>To P and E Extension Quarry:</u></b>                  From the HM-Mainline and HM-2100 junction, continue on the HM-Mainline for 1.4 miles and turn left onto the HM-2700. Drive 1.0 miles to P&amp;E Extension Quarry.</p>
--	--



**TIMBER NOTICE OF SALE**

**SALE NAME:** CROSS POLLINATE SORTS

**AGREEMENT NO:** 30-104743-30-104755

**AUCTION:** November 16, 2023 starting at 10:00 a.m.      **COUNTY:** Pacific  
Pacific Cascade Region Office, Castle Rock, WA

**SALE LOCATION:** Sale located approximately 11 miles east of Raymond, WA

**PRODUCTS SOLD  
AND SALE AREA:**

All delivered logs, except leave trees bound by yellow "Leave Tree Area" tags, leave trees marked with blue paint, and all down timber existing 10 years prior to the day of sale, and snags bounded by the following:

Unit 1, white "Timber Sale Boundary" tags and pink "Timber Harvest Boundary" flagging and the P&E 1200;

Unit 2, white "Timber Sale Boundary" tags and pink "Timber Harvest Boundary" flagging and the P&E Mainline and the P&E 1200; meeting the specifications described below; on parts of Sections 16, 17, 20, and 21 all in Township 13 North, Range 7 West W.M., containing 162 acres, more or less.

**MINIMUM BID AND ESTIMATED LOG VOLUMES:**

Agreement #	Sort #	Species and Sort Specifications	Average Log Length	Estimated Volume		Tons Per MBF	Minimum Bid Delivered Prices		Total Appraised Value	Bid Deposit
				Mbf	Tons		\$/mbf	\$/Ton		
104743	1	DF 5"-11"	28'	251	1807	7.2	\$550.00		\$138,050.00	\$13,805.00
104744	2	DF 12"-19"	28'	979	5580	5.7	\$600.00		\$587,400.00	\$58,740.00
104745	3	DF 20"+	28'	2089	10236	4.9	\$600.00		\$1,253,400.00	\$125,340.00
104746	4	DF HQ 12"+	28'	942	4804	5.1	\$700.00		\$659,400.00	\$65,940.00
104747	5	RA 5"-7"	N/A	259	1813	7		\$45.00	\$81,585.00	\$8,158.50
104748	6A	RA 8"+	26'	1429	10432	7.3	\$400.00		\$592,225.00	\$59,222.50
	6B	MA 8"+	24'	75	540	7.2	\$275.00 FIXED			
104750	7	RC 5"+	28'	657	3811	5.8	\$1,250.00		\$821,250.00	\$82,125.00
104751	8	SS 12"+	N/A	32	160	5		\$45.00	\$7,200.00	\$720.00
104752	9	WW 5"-19"	28'	174	1044	6	\$475.00		\$82,650.00	\$8,265.00
104753	10	WW 20"+	28'	120	684	5.7	\$500.00		\$60,000.00	\$6,000.00
104754	11	Conifer Pulp 2"+	N/A	9	117	13		\$25.00	\$2,925.00	\$292.50
104755	12	Hardwood Pulp 2"+	N/A	52	676	13		\$25.00	\$16,900.00	\$1,690.00
<b>Totals:</b>				<b>7068</b>	<b>41704</b>				<b>\$4,302,985.00</b>	

**CERTIFICATION:** This sale is certified under the Sustainable Forestry Initiative® program Standard (cert no: BVC-SFIFM-018227)

**BID METHOD:** Sealed Bids      **UNIT OF MEASURE:** MBF Scale/Tonnage Scale

**EXPIRATION DATE:** July 15, 2024      **ALLOCATION:** Export Restricted

**PAYMENT SECURITY:** To be determined by the State as described in Clause P-045.2 of the Purchaser's Contract.



## TIMBER NOTICE OF SALE

---

### **BIDDING**

#### **PROCEDURES:**

A separate sealed bid and envelope must be submitted for each log sort. Prospective Purchasers may bid on any or all log sorts. On the day of sale the Purchaser must bring their bid deposit up to 10% of their total bid price. Complete bidding procedures and auction information may be obtained from the Pacific Cascade Region Office in Castle Rock WA. Phone number (360)577-2025.

### **TIMBER EXCISE**

#### **TAX:**

Purchaser must pay the forest excise taxes associated with the log sorts delivered to them. The tax rate for this sale is 4.2 %. Taxable Stumpage = Total Delivered Value – (Harvest Cost + Estimated Haul Cost + ARRF). For more information contact the Department of Revenue, Forest Tax Section at 1-800-548-8829.

Use the following rates for estimating taxable stumpage:

Payment for Harvesting (OBT): The State's payment to the Contractor for harvesting (OBT Rate) adjusted each quarter using the following formula:

$$\text{Harvester's OBT Rate} = (Q(x) - Q(\text{base})) \times 100 \times \$0.04 + \text{Harvester's OBT Bid Rate}$$

Where;

Q(base) = Average fuel price for quarter preceding harvesting services contract bid opening.

Q(x) = Average fuel price for quarter preceding log deliveries.

Harvester's OBT Rate shall not be less than their original bid rate.

Harvest Cost = \$129.69 per MBF for sorts 1, 2, 3, 4, 6, 7, 9 and 10, \$14.00 per Ton for sorts 11 and 12 and \$16.00 per Ton for sorts 5 and 8.

Hauling Services Payment Rate per Ton  
= (Base Rate + Mileage Rate) x (1.70)

Base Rate = \$2.35 per ton

Mileage Rate = ((\$0.16 x C miles) + (\$0.11 x A miles)) x Fuel Index Factor

ARRF = \$0.00 per MBF for sorts 11 and 12 and \$26.00 per MBF for sorts 1, 2, 3, 4, 5, 6, 7, 8, 9 and 10.

Note: To calculate ARRF rates per ton use the tons\mbf conversion factor in the table above.

Long-haul surcharge: An additional haul payment of \$25/mbf net scale for mbf scale sorts or \$4.60/ton for tonnage sorts will be added for delivery destinations in excess of 250 total one-way miles (A miles plus C miles).



## TIMBER NOTICE OF SALE

---

**CONFIRMATION:** Each sort is subject to confirmation following auction. Sorts will not be confirmed until at least 10 days after auction. Final contract award is contingent upon the State's haul cost analysis. Actual haul route may vary and is subject to change at the State's discretion.

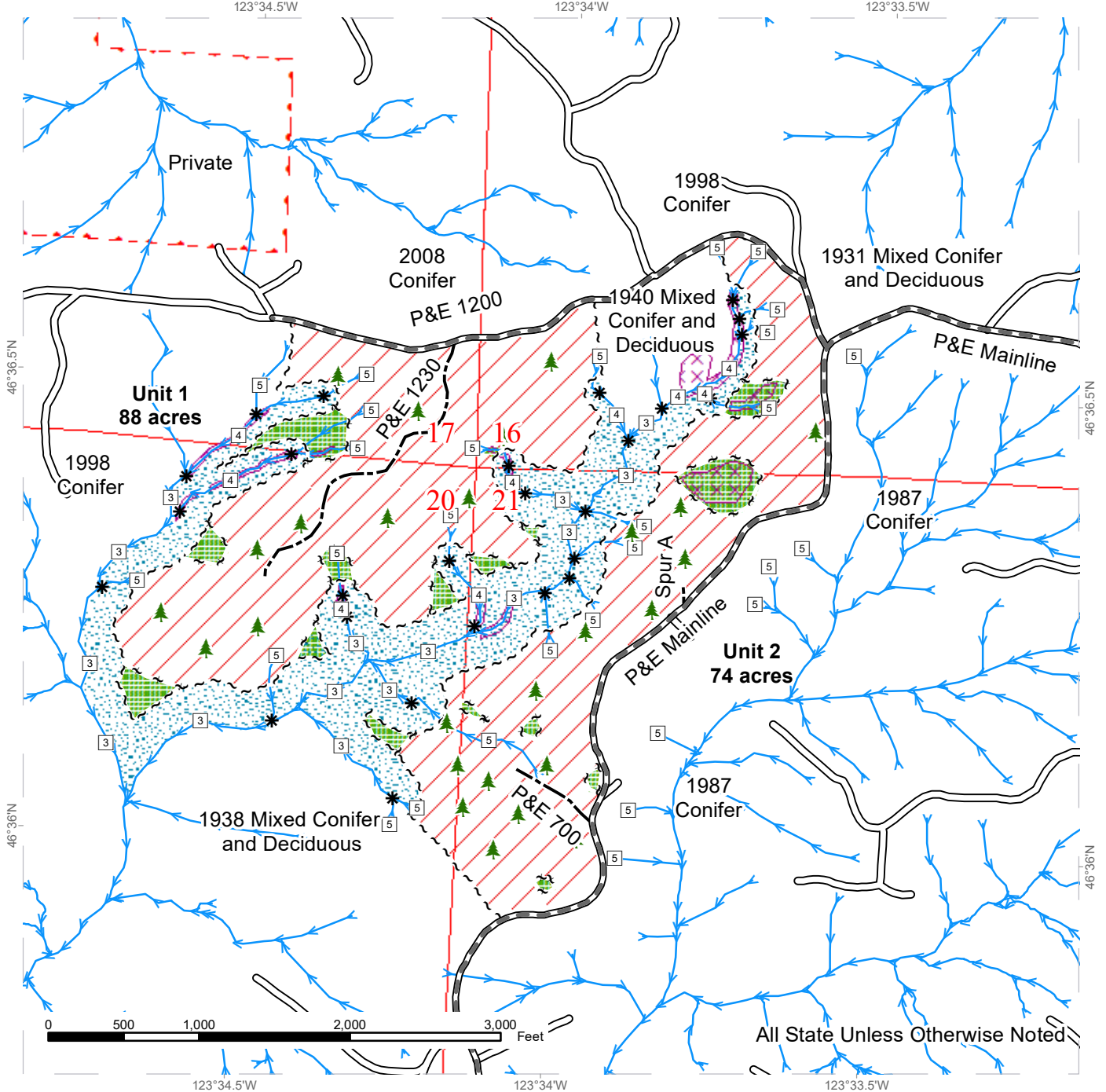
**SPECIAL REMARKS:** The successful Purchaser(s) will be required to purchase logs from the sale area upon delivery to their location specified in the bid submitted. Logs will be delivered to the Purchaser's delivery location by the State's contract harvester. Purchaser is responsible for weighing and scaling costs. All tonnage loads will be weighed and all mbf loads will be scaled at State approved locations. The State reserves the right to determine where logs are authorized to be scaled and weighed.

For more information regarding this log sort sale visit our web site:  
<http://www.dnr.wa.gov/programs-and-services/product-sales-and-leasing/timber-sales/timber-auction-packets>. If you have questions call Josh Watten at the Pacific Cascade Region Office at (360)575-2025 or Steve Teitzel at the Product Sales and Leasing Division Office in Olympia at (360)480-3910.

# TIMBER SALE MAP

**SALE NAME:** CROSS POLLINATE SORTS  
**AGREEMENT #:** 30-104587  
**TOWNSHIP(S):** T13R7W  
**TRUST(S):** Capitol Grant (7), Charitable/Educational/Penal & Reformatory Instit. (6), Common School and Indemnity (3), State Forest Transfer (1)

**REGION:** Pacific Cascade Region  
**COUNTY(S):** Pacific  
**ELEVATION RGE:** 280-760



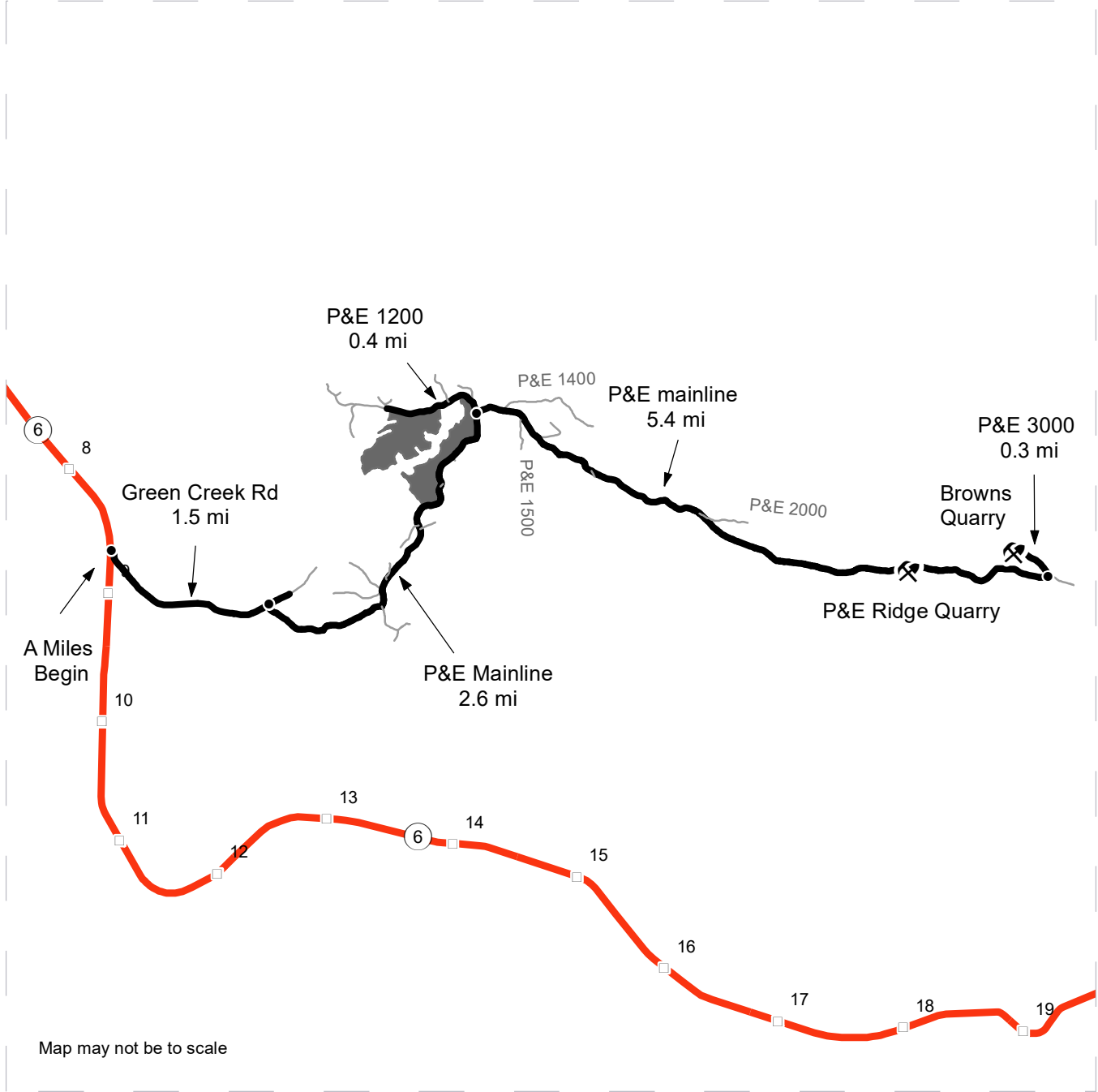
Variable Retention Harvest	Sale Boundary Tags	Streams
Leave Tree Area	Leave Tree Tags	Stream Type
Riparian Mgt Zone	Property Line	Stream Type Break
Potentially Unstable Slopes	Existing Roads	Leave Tree Area <1/4-acre
	Required Pre-Haul Maintenance	
	Optional Construction	



# DRIVING MAP

**SALE NAME:** CROSS POLLINATE SORTS  
**AGREEMENT#:** 30-104587  
**TOWNSHIP(S):** T13R7W  
**TRUST(S):** Capitol Grant (7), Charitable/Educational/Penal & Reformatory Instit. (6), Common School and Indemnity (3), State Forest Transfer (1)

**REGION:** Pacific Cascade Region  
**COUNTY(S):** Pacific  
**ELEVATION RGE:** 280-760



- Timber Sale Unit
- Highway
- Haul Route
- Other Road
- Milepost Markers
- Distance Indicator
- Rock Pit

**DRIVING DIRECTIONS:**

At approximately the 9 marker on SR 6 turn onto green creek road. Continue for 1.5 miles to the P&E Mainline (CB 21). Continue for 2.6 miles on the P&E Mainline to the P&E 1200 and Unit 2. From here you can turn onto the P&E 1200 and travel for 0.4 miles to Unit 1. Or, you can continue on the P&E Mainline for 5.4 miles, passing the P&E Ridge Quarry along the way to the P&E 3000. Turn onto the P&E 3000 for 0.3 miles to the Browns Quarry.









TIMBER NOTICE OF SALE

SALE NAME: MARSHMALLOW

AGREEMENT NO: 30-103589

AUCTION: November 14, 2023 starting at 10:00 a.m., COUNTY: Thurston South Puget Sound Region Office, Enumclaw, WA

SALE LOCATION: Sale located approximately 18 miles west of Olympia, WA.

PRODUCTS SOLD AND SALE AREA:

All timber, except leave trees bounded out by yellow leave tree area tags, snags, and down timber existing more than 5 years from the day of sale, bounded by the following: white Timber Sale Boundary tags, and the B-5000 and B-5200 roads in Unit #1; white Timber Sale Boundary tags, and the B-5000, B-5200, and C-4800 roads in Unit #2; white Timber Sale Boundary tags, and the C-4000 Road in Units #3 and #4; white Timber Sale Boundary tags, and the C-4700, C-8000, C-8900, C-8910, and C-8912 roads in Unit #5.

All forest products above located on part(s) of Sections 25, 26, 35 and 36 all in Township 18 North, Range 4 West, Sections 31 all in Township 18 North, Range 3 West, W.M., containing 241 acres, more or less.

CERTIFICATION: This sale is certified under the Sustainable Forestry Initiative® program Standard (cert no: BVC-SFIFM-018227)

ESTIMATED SALE VOLUMES AND QUALITY:

Table with columns: Species, Avg DBH, Ring Count, Total MBF, and MBF by Grade (1P, 2P, 3P, SM, 1S, 2S, 3S, 4S, UT). Rows include Douglas fir, Hemlock, Red alder, Redcedar, Noble fir, Grand fir, and Sale Total.

MINIMUM BID: \$2,927,000.00 BID METHOD: Sealed Bids

PERFORMANCE SECURITY: \$100,000.00 SALE TYPE: Lump Sum

EXPIRATION DATE: October 31, 2026 ALLOCATION: Export Restricted

BID DEPOSIT: \$292,700.00 or Bid Bond. Said deposit shall constitute an opening bid at the appraised price.

HARVEST METHOD: Harvesting activities are estimated to be 68 percent cable and 32 percent ground based harvest. Cable and cable-tethered equipment allowed on all slopes. Non-tethered self-leveling equipment limited to sustained slopes of 55 percent or less, all other ground based equipment limited to tracked equipment and 6-wheeled rubber tired skidders with over-the-tire tracks spanning both sets of rear tires on sustained slopes that are 45 percent or less. Yarding may be restricted during wet weather if rutting becomes excessive, per clause H-017.

Falling and yarding will not be permitted on weekends or State recognized holidays unless authority to do so is granted, in writing, by the Contract Administrator.



## TIMBER NOTICE OF SALE

---

**ROADS:** 964.60 stations of required prehaul maintenance. 7.20 stations of required abandonment. Road work on this sale includes optional landing construction. Purchaser maintenance on the B-5000 (Adjacent/within Units #1 and #2), B-5200, C-4000, C-4700, C-4800, C-8000 (Adjacent /within Unit #5), C-8900, C-8910, and C-8912 roads. Designated maintenance on all other roads used.

Rock for this proposal may be obtained from the State owned Porter Pass Quarry, and up to 1,700cy of 2-inch crushed and up to 1,800cy of 4-inch jaw from the existing stockpiles at Porter Pass Quarry, at no cost to the Purchaser, or any commercial rock source at the Purchaser's expense. An estimated 1,872 cubic yards of commercial rock is required for surfacing on the B-Line and B-8000 Roads. See Rock Lists in the Road Plan.

All road work activities will not be permitted from November 1 to April 30, nor on weekends or State recognized holidays, unless authority to do so is granted, in writing, by the Contract Administrator. If permission is granted to operate from November 1 to April 30, a maintenance plan may be required per Road Plan clause 1-26.

The hauling of forest products will not be permitted from November 1 to April 30, nor on weekends or State recognized holidays, unless authorized in writing by the Contract Administrator. If permission is granted to operate from November 1 to April 30, preventative measures may be required to protect water, soil, roads and other forest assets.

### ACREAGE DETERMINATION

**CRUISE METHOD:** Unit acreage was determined by traversing boundaries by GPS in all units, and length times width for existing roads in Units #1, #2, and #5. GPS data files are available at DNR's website for timber sale auction packets. See cruise narrative for cruise method.

**FEES:** \$181,186.00 is due on day of sale. \$9.00 per MBF is due upon removal. These are in addition to the bid price.

**SPECIAL REMARKS:** Purchaser shall cut all hardwood stems more than 6 feet tall within the harvest units, leaving a stump no more than 12 inches in height.

There are trees in all units from previous thinnings painted with a single blue or yellow band. Trees painted with a single blue or yellow band are take trees, unless located within tagged leave tree area clumps.

This sale includes replacement of 14 stream culverts (no fish) and 23 cross-drain culverts, including 4 contingency cross-drain culverts, depending on need.

Purchaser shall close recreation trails associated with Unit #5 per Schedule A.

Purchaser shall abate dust on the B-Line from stations 638+35 to 647+00 per Contract Administrator discretion.

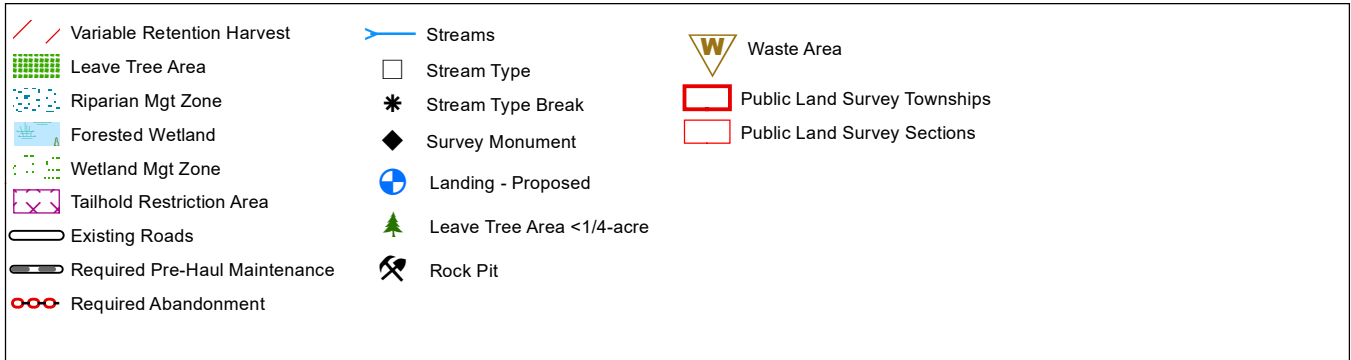
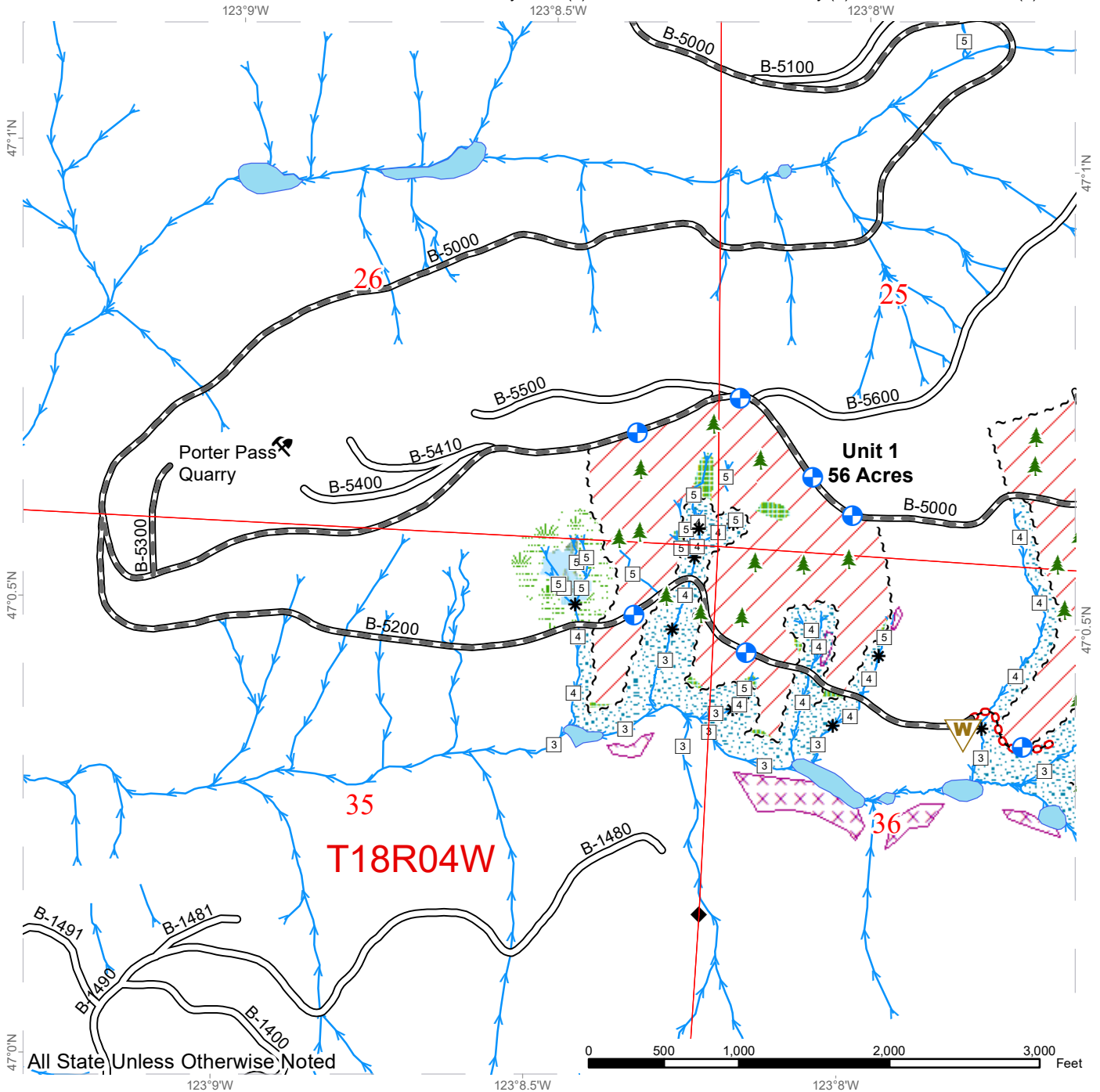
Landings shall be built 50 feet off the B-5000, B-5200, C-4000, C-4700, C-4800, C-8000, and C-8010 roads. Landings shall be marked by Purchaser and approved by the Contract Administrator prior to construction.

Note to cruisers and appraisers: Please refrain from leaving pink, orange, or blue flagging from your cruises in or around the sale area to avoid confusion with DNR's marking. Additionally, for the safety of the public, please remove from roads and trails all string from string boxes used during appraising or cruising this sale.

# TIMBER SALE MAP

**SALE NAME:** MARSHMALLOW  
**AGREEMENT #:** 30-103589  
**TOWNSHIP(S):** T18R3W, T18R4W  
**TRUST(S):** Charitable/Educational/Penal & Reformatory Inst. (6), Common School and Indemnity (3), State Forest Transfer (1)

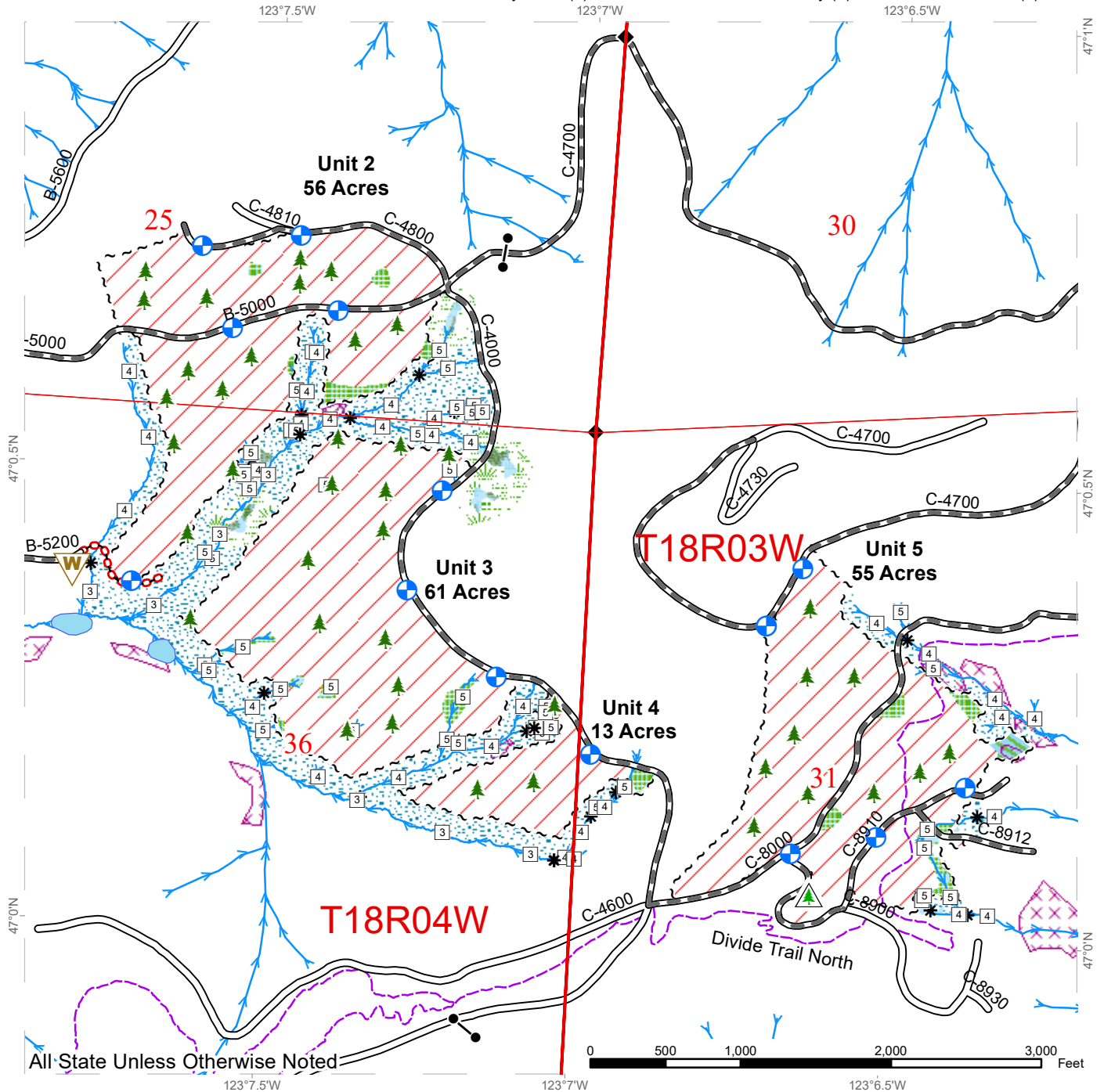
**REGION:** South Puget Sound Region  
**COUNTY(S):** Thurston  
**ELEVATION RGE:** 1000-2080



# TIMBER SALE MAP

**SALE NAME:** MARSHMALLOW  
**AGREEMENT #:** 30-103589  
**TOWNSHIP(S):** T18R3W, T18R4W  
**TRUST(S):** Charitable/Educational/Penal & Reformatory Instit. (6), Common School and Indemnity (3), State Forest Transfer (1)

**REGION:** South Puget Sound Region  
**COUNTY(S):** Thurston  
**ELEVATION RGE:** 1000-2080

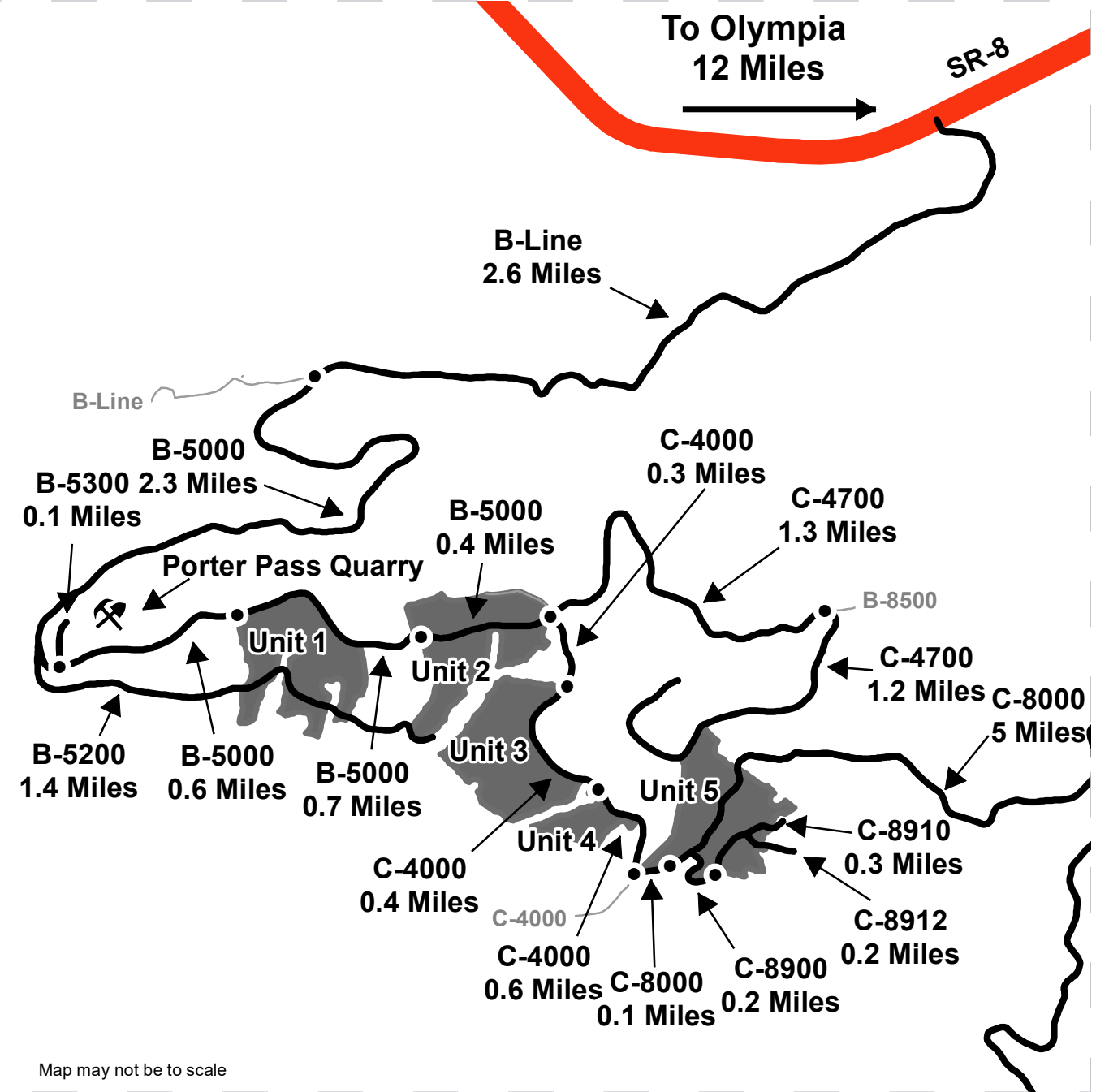


Variable Retention Harvest	Required Abandonment	Non-Tradeable Leave Trees
Non-Tradeable Leave Clump	Motorized Trail	Waste Area
Leave Tree Area	Streams	Gates
Riparian Mgt Zone	Stream Type	Public Land Survey Townships
Forested Wetland	Stream Type Break	Public Land Survey Sections
Wetland Mgt Zone	Survey Monument	
Tailhold Restriction Area	Landing - Proposed	
Existing Roads	Leave Tree Area <1/4-acre	
Required Pre-Haul Maintenance		

# DRIVING MAP

SALE NAME: MARSHMALLOW  
 AGREEMENT#: 30-103589  
 TOWNSHIP(S): T18R3W, T18R4W  
 TRUST(S): Charitable/Educational/Penal & Reformatory Instit. (6), Common School and Indemnity (3), State Forest Transfer (1)

REGION: South Puget Sound Region  
 COUNTY(S): Thurston  
 ELEVATION RGE: 1000-2080



- Distance Indicator
- ⛏ Rock Pit
- Timber Sale Unit
- Haul Route
- Other Road
- Highway

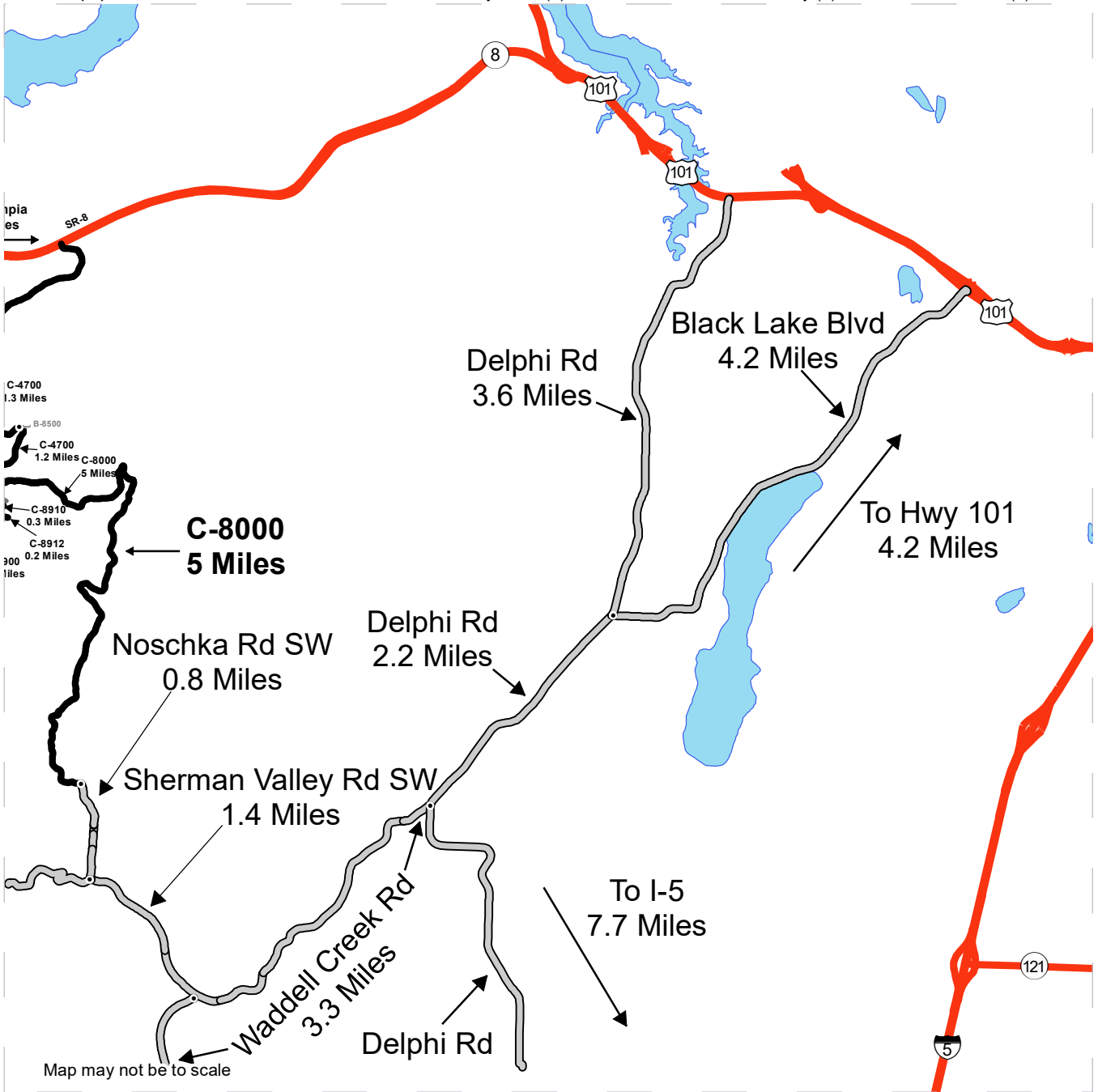
**DRIVING DIRECTIONS:**  
 See Attached Driving Directions



# DRIVING MAP

**SALE NAME:** MARSHMALLOW  
**AGREEMENT#:** 30-103589  
**TOWNSHIP(S):** T18R3W, T18R4W  
**TRUST(S):** Charitable/Educational/Penal & Reformatory Instit. (6), Common School and Indemnity (3), State Forest Transfer (1)

**REGION:** South Puget Sound Region  
**COUNTY(S):** Thurston  
**ELEVATION RGE:** 1000-2080



- Distance Indicator
- Timber Sale Unit
- Haul Route
- Other Road
- Highway
- County Road

**DRIVING DIRECTIONS:**  
 See Attached Driving Directions



## **Driving Directions**

Heading West from Olympia off Hwy 8, just before milepost 16, turn South on the B-Line for 2.6 miles. Turn left onto the B-5000. To reach Porter Pass Quarry continue on the B-5000 for 2.3 miles and turn left onto the B-5300 and continue for 0.1 miles. For Unit 1, return to the B-5000 and head East, continue 0.6 miles and you will arrive. To reach Unit 2, continue East on the B-5000 for 0.7 miles and you will arrive. For Unit 3, continue East on the B-5000 for 0.4 miles. Turn right on the C-4000 and continue for 0.3 miles and you will arrive. Continue 0.4 miles on the C-4000 to reach Unit 4. For Unit 5, continue on the C-4000 for 0.6 miles to the C-4000/C-8000 junction. Once at this junction, turn left onto the C-8000. Continue for 0.1 miles and you will have arrived.





**State of Washington  
Department of Natural Resources**

**SEALED BID FORM**

Sale Name \_\_\_\_\_ Agreement Number \_\_\_\_\_

\_\_\_\_\_ hereby submits the following bid for timber.  
(Print full, legal company name)

\_\_\_\_\_  
(Street address, City, State, Zip Code)

\_\_\_\_\_  
(Phone Number)

---

---

**Lump Sum Bid** (Not Including Fees)      \$ \_\_\_\_\_ **For Total Sale**

**Weight Scale Sale Bid** (Not Including Fees)      \$ \_\_\_\_\_ / **Ton**

**Scribner Scale Sale Bid** (Not Including Fees)      \$ \_\_\_\_\_ / **MBF For Biddable Species**

---

---

**BID DEPOSIT**

**Bid Deposit Amount:** \$ \_\_\_\_\_

**Bid Deposit Type:**

- Cash, certified check, cashiers check, or money order  
 Per Sale Bid Bond  
 Statewide Bid Bond, Number \_\_\_\_\_

---

---

**Within 30 days of confirmation date** the successful bidder agrees to furnish Performance Security acceptable to the State in the amount specified on the Notice of Sale. Performance Security must guarantee performance of all provisions of the contract and payment of any damages caused by operations under the contract or resulting from the successful bidders noncompliance with any rule or law.

Bidder's Warranty and Bid Signature

*By signing and submitting this bid as an offer to purchase forest products from the State, the Bidder hereby warrants to the State that they have had an opportunity to fully inspect the sale area and the forest products being sold. Bidder further warrants to the State that they enter this bid based upon their own judgments of the value of the forest products, formed after their own examination and inspection of both the timber sale area and the forest products being sold. Bidder also warrants to the State that they enter this bid without any reliance upon the volume estimates, acreage, appraisals, pre-bid documentation, or any other representation by the Washington State Department of Natural Resources.*

\_\_\_\_\_ Date \_\_\_\_\_  
(Signature of Authorized Representative submitting this bid)

\_\_\_\_\_  
(Print name and title of Authorized Representative submitting this bid)

**Note: all sales are subject to confirmation by the Commissioner of Public Lands (Refer 79.15.120)**

## Instructions For Completing Sealed Bid Form

---

*All bids submitted for the purchase of forest products being sold by the Washington State Department of Natural Resources must have an original signature on behalf of the person or entity submitting the bid, and must be on the form provided in this booklet or a photocopy thereof. The DNR will not accept bids that are not signed, and will not accept bids that are not on the current, approved bid form. All appropriate blanks on bid form must be completed including the bid bond number if the bidder is relying upon a bid bond for bid deposit.*

*For more specific information, contact the appropriate region office.*

---

### In-Person Bids

- A. Sealed bids must be in auction box before 10:00 a.m. on the day of auction at the location specified in the Timber Notice of Sale.
  - B. Sealed bids must be submitted in an envelope with the name of the sale, the bidder's name and the contract number clearly written on the outside of the envelope. The full legal name and business address of the bidder must be inserted where indicated on the form, and must be on the bid bond and timber sale contract. The bid form must be signed by an authorized representative. When a bidder has more than one person authorized to bid, documentation of those persons with signature authority for bidding must accompany the bid or be on file at the region office. Sealed bid envelopes are available at all region offices. One bid per envelope.
  - C. Sealed bid envelopes **must** contain a completed bid form and a bid deposit.
  - D. Sealed bid envelopes **may** contain a check for the Initial Deposit amount and a check for fees.
- 

### Mailed Bids

- A. Bids that are mailed are required to have printed on the outside: "DO NOT OPEN UNTIL SALE DATE. SEALED BID ENCLOSED". The sealed bid envelope(s) will be enclosed inside the mailed-in envelope. Mailed bids must be submitted in an envelope with the name of the sale, the bidder's name and the agreement number clearly written on the outside of the envelope. The full legal name and business address of the bidder must be inserted where indicated on the form, and must be the same on the bid bond and timber sale contract. The Sealed Bid Form must be signed by an authorized representative. When a bidder has more than one person authorized to bid, documentation of those persons with signature authority for bidding must accompany the bid or be on file at the region office. Mail-in envelopes are available at all region offices. One bid per mailed-in envelope.
  - B. Bids that are mailed will be accepted up to 4:30 p.m. the last business day before the auction by the region office in which the sale is located. Bidders assume the risk for the method of delivery. The DNR assumes no responsibility for any delays caused by any delivery service.
  - C. Sealed bid envelopes **must** contain a completed bid form and a bid deposit.
  - D. Sealed bid envelopes **may** contain a check for the Initial Deposit amount and a check for fees.
- 

### Initial Deposit:

**Lump Sum Sales** - Initial Deposit must equal 10% of the total bid submitted.  
(25% if the bidder is a defaulter as defined under WAC 332-140-300)

**Weight Scale Sales** - Initial Deposit must equal 10% of the bid per ton multiplied by the total sale estimated tonnage. (25% if the bidder is a defaulter as defined under WAC 332-140-300)

**Scribner MBF Scale Sales** - Initial Deposit must equal 10% of the bid per MBF multiplied by the total sale MBF. (25% if the bidder is a defaulter as defined under WAC 332-140-300)

**State of Washington  
Department of Natural resources**

**STATEWIDE BID BOND**

Bond Number \_\_\_\_\_

\_\_\_\_\_ of \_\_\_\_\_,  
(Principal's Name) (City, State)

hereinafter called PRINCIPAL, and \_\_\_\_\_ hereinafter called  
SURETY,

a corporation organized under the laws of the State of \_\_\_\_\_, and authorized to transact surety business in the State of Washington, as SURETY, are held and firmly bound jointly and severally to the State of Washington, Department of Natural Resources, hereinafter called the STATE, in the sum of \$150,000.00 Dollars, lawful money of the United States of America. The PRINCIPAL binds itself, its heirs, executors, administrators, successors, and assigns, and the SURETY binds itself, its successors, and assigns, all jointly and severally.

This bond shall be governed by the laws of the State of Washington. In the event of a lawsuit involving this bond, a venue shall be proper only in Thurston County Superior Court.

Signed, sealed and dated this \_\_\_\_\_ day of \_\_\_\_\_, \_\_\_\_\_ .  
(month) (year)

This statewide bid bond may be used for bidding between the following dates:

Starting:

Ending:

**It Is Hereby Understood and Agreed:**

If PRINCIPAL is an apparent high bidder, PRINCIPAL shall before 4:30 p.m ., on day of sale, pay to the STATE the amount of the initial deposit in the form of a certified check, cashier's check, bank draft, cash or money order, then this agreement shall be void for the sale on which the payment is made; otherwise, it will remain in force.

SURETY will make payment to the STATE within ten days after demand by the STATE if the PRINCIPAL shall fail to make timely payment as described above.

The SURETY may cancel this bond by sending a written notice to the STATE, not less than forty-five days before a cancellation date; liability shall terminate as to acts or omissions of the PRINCIPAL that occur after the cancellation date.

The PRINCIPAL and the SURETY executed this bond on the date first mentioned.

**Principal:** (Above named)

Signature: \_\_\_\_\_

Name: \_\_\_\_\_

Title: \_\_\_\_\_

Address: \_\_\_\_\_

City: \_\_\_\_\_  
State & Zip Code

**Surety:** (Above named)

Signature: \_\_\_\_\_

Name: \_\_\_\_\_

Title: \_\_\_\_\_

Address: \_\_\_\_\_

City: \_\_\_\_\_  
State & Zip Code

**Surety:** (Local Office of Authorized agent)

Signature: \_\_\_\_\_

Name: \_\_\_\_\_

Title: \_\_\_\_\_

Address: \_\_\_\_\_

City: \_\_\_\_\_  
State & Zip Code

Notary or Company Seal in Space Above

## **Instructions for Completing Timber Sale Statewide Bid Bond**

- A. This form is authorized for use as bid guaranty to qualify for bidding on Washington State Department of Natural Resources timber sales.
- B. The Statewide Bid Bond may be used as bid guaranty on more than one timber sale.
- C. The full legal name and business address of the PRINCIPAL must be inserted where indicated and must be the same as will appear on the bidding record and timber sale contract. The bond must be signed by an authorized person. Additionally, the name must be typed or printed below the signature and title must be shown.
- D. The full legal name and business address of the SURETY must be inserted where indicated. The bond must be signed by an authorized person. Additionally, the name must be typed or printed below the signature and the title must be shown.
- E. If the SURETY does not have a Washington State office or resident agent, but is authorized to transact surety business in the State of Washington as SURETY, it may leave this signature block blank.
- F. This form must be received by the Department of Natural Resources, Product Sales & Leasing Division, PO BOX 47016, Olympia, Washington, 98504-7016, ten days in advance of the auction.
- G. **The State reserves the right to reject *incomplete or incorrect* bid bond forms, making such forms unacceptable as bid guaranty.**



**State of Washington  
Department of Natural Resources**

**Timber Sale Per Sale Bid Bond**

Bond Number \_\_\_\_\_

\_\_\_\_\_ of \_\_\_\_\_, hereinafter called PRINCIPAL, and \_\_\_\_\_, hereinafter called SURETY, a corporation organized under the laws of the State of \_\_\_\_\_ and authorized to transact surety business in the State of Washington, as SURETY, are held and firmly bound jointly and severally to the State of Washington, Department of Natural Resources, hereinafter called the STATE, in the sum of \$ \_\_\_\_\_ Dollars, lawful money of the United States of America. The PRINCIPAL binds itself, its heirs, executors, administrators, successors, and assigns, and the SURETY binds itself, its successors, and assigns, all jointly and severally.

This bond shall be governed by the laws of the State of Washington. In the event of a lawsuit involving this bond, venue shall be proper only in Thurston County Superior Court.

Signed, sealed, and dated this \_\_\_\_\_ day of \_\_\_\_\_, 20 \_\_\_\_\_.

**BID IDENTIFICATION:**

SALES NAME(S)	REQUIRED DEPOSIT	AGREEMENT NUMBER(S)

**DATE OF BID:** \_\_\_\_\_

**It Is Hereby Understood and Agreed:**

*If* PRINCIPAL is the high bidder on the sale(s) identified above and, within ten (10) days of the day of sale, transmits cash, certified check, cashier's check, bank draft or money order, payable to the STATE, in the amount of the bid guaranty required by the terms of the Notice of Sale, *then* this obligation shall be void; *otherwise*, it shall remain in force.

SURETY will make payment to the STATE within ten (10) days after demand by the STATE whenever the PRINCIPAL shall fail to make timely payment as described above.

IN WITNESS WHEREOF: the PRINCIPAL and the SURETY have caused this bond to be executed on the date first mentioned.

**SECOND OFFICER:**

Signature: \_\_\_\_\_

Name: \_\_\_\_\_

Title: \_\_\_\_\_

**PRINCIPAL:** (Above Named)

Signature: \_\_\_\_\_

Name: \_\_\_\_\_

Title: \_\_\_\_\_

**SURETY:** (Local Office of Authorized Agent)

Signature: \_\_\_\_\_

Name: \_\_\_\_\_

Title: \_\_\_\_\_

Address: \_\_\_\_\_

City: \_\_\_\_\_

State & Zip: \_\_\_\_\_

**SURETY:** (Above Named)

Signature: \_\_\_\_\_

Name: \_\_\_\_\_

Title: \_\_\_\_\_

Address: \_\_\_\_\_

City: \_\_\_\_\_

State & Zip \_\_\_\_\_

**NOTARY OR COMPANY SEAL IN THE SPACE ABOVE**



## **Instructions for Completing Timber Sale Per Sale(s) Bid Bond**

- A. This form is authorized for use as bid guaranty to qualify for bidding on Washington State Department of Natural Resources timber sales.
- B. The Timber Sale Per Sale Bid Bond may be used as bid guaranty on more than one timber sale auction held the same date at the same location.
- C. The full legal name and business address of the PRINCIPAL must be the same as will appear on the bidding record and timber sale contract. The bond must be signed by an authorized person, the name typed or printed, and title shown. If PRINCIPAL is a corporation, a second officer must sign in the space to the left of the signature of the officer executing for the PRINCIPAL.
- D. The full legal name and business address of the SURETY must be inserted where indicated. The bond must be signed by an authorized person. Additionally, the name must be typed or printed below the signature and the title must be shown. If this person is not an officer of the corporation, evidence of authority must be submitted.
- E. If the SURETY does not have a Washington State office or resident agent, but is authorized to transact surety business in the State of Washington as Surety, it may leave the local office signature block blank.
- F. The date of the bid bond must not be later than the auction date.
- G. **The State reserves the right to reject incomplete or *incorrect* bid bond forms, making such forms unacceptable as guaranty.**



STATE OF WASHINGTON  
DEPARTMENT OF NATURAL RESOURCES

**LOG SORT SEALED BID FORM**

Sale Name \_\_\_\_\_ Agreement Number \_\_\_\_\_ Date \_\_\_\_\_

\_\_\_\_\_ hereby submits the following bid for delivered logs.  
(Print Company Name)

\_\_\_\_\_ Telephone Number \_\_\_\_\_  
(Print Name Authorized Company Representative) (Contact for bid result notification)

\_\_\_\_\_  
(Street Address)

\_\_\_\_\_  
(City, State and Zip)

Agreement Number	Sort Number	<u>Delivered Logs Bid Amount</u> (fill in one only)	
		\$ /MBF	\$ /TON

**Bid Deposit Amount** \$ \_\_\_\_\_

- Bid Deposit Type:**
- Cash, Certified Check, Cashiers Check, or Money Order
  - Per Sale Bid Bond
  - Statewide Bid Bond, Number \_\_\_\_\_

The successful bidder agrees to furnish payment security acceptable to the State in the amount as described in clause P-041 of the Purchaser’s contract prior to log delivery and at a date to be determined by the State.

**Bidder’s Warranty and Bid Signature**

*By signing and submitting this bid as offer to purchase forest products from the State, the Bidder hereby warrants to the State that they have had an opportunity to fully inspect the sale area and the forest products being sold. Bidder further warrants to the State that they enter this bid based solely upon their own judgment of the value of the forest products, formed after their own examination and inspection of both the timber sale area and the forest products being sold. Bidder also warrants to the State that they enter this bid without any reliance upon the volume estimates, acreage estimates, appraisals, pre-bid documentation, or any other representation by the State Department of Natural Resources.*

\_\_\_\_\_  
(Signature of Authorized Representative submitting this bid)

\_\_\_\_\_  
(Date of Signature)

\_\_\_\_\_  
(Print name and title of Authorized Representative submitting this bid)

**NOTES:** A separate bid form is required for each log sort bid and must be delivered in a separate envelope. Photocopies of this bid form may be used. Each photocopy must have original signatures. Final contract award is contingent upon the State’s haul cost analysis. Actual haul route may vary and is subject to change at the State’s discretion. All sales are subject to confirmation by the Commissioner of Public Lands as per RCW 79.15.100.

**LOG SORT SEALED BID SUPPLEMENTAL INFORMATION FORM**\_\_\_\_\_  
(Print Company Name)\_\_\_\_\_  
(Sale Name)\_\_\_\_\_  
(Agreement Number)\_\_\_\_\_  
(Sort Number)\_\_\_\_\_  
(email: optional for DNR production report distribution)**Log Manufacturing Specifications:****Sawlog and Peeler sorts:** Enter at least one preferred log length including trim for each log length range below.**Pole sorts (Distribution):** Enter three or more lengths. Attach preferred manufacturing information.**Pole sorts (Transmission):** Enter six or more lengths. Attach preferred manufacturing information.**Tonnage sorts:** See bid form instructions for required log lengths. Enter additional custom lengths as desired.

<b>Log Length Ranges</b>	<b>Bidder's Preferred Log Lengths</b>
<b>16 ft. through 20 ft.</b>	
<b>22 ft. through 30 ft.</b>	
<b>32 ft. through 40 ft.</b>	
<b>Distribution Poles – 35 ft. through 55 ft.</b>	
<b>Transmission Poles – 60 ft.+</b>	

**Log Delivery Information:****1) Designate the point of delivery and address (must be a street address)**\_\_\_\_\_  
(Location Name)\_\_\_\_\_  
(Street Address)\_\_\_\_\_  
(City, State and Zip)**2) Designate the state approved Scaling and Weighing facilities closest to the point of delivery as needed.****Scaling Location Information****Weighing Location Information**\_\_\_\_\_  
(Scaling Location Name)\_\_\_\_\_  
(Weighing Location Name)\_\_\_\_\_  
(Third Party Scaling Organization)\_\_\_\_\_  
(Weighing Location Owner)\_\_\_\_\_  
(Scaling Location Street Address)\_\_\_\_\_  
(Weighing Location Street Address)\_\_\_\_\_  
(Scaling Location City, State and Zip)\_\_\_\_\_  
(Weighing Location City, State and Zip)

**Final contract award is contingent upon the State's haul cost analysis. Actual haul route may vary and is subject to change at the State's discretion. Additional terms or conditions requested by the bidder on or attached to the Log Sort Sealed Bid or Supplemental Information Forms are informational only and non-binding.**

## **Instructions for Completing the Log Sort Sealed Bid and Supplemental Information Forms.**

All bids submitted for the purchase of forest products being sold by the Washington State Department of Natural Resources must have an original signature on behalf of the person or entity submitting the bid, and must be on the form(s) provided in this booklet or a photocopy thereof. The DNR will not accept bids that are not signed, and will not accept bids that are not on the current, approved bid form. All appropriate blanks including Agreement Number, Sort Number, Bid amount (per mbf or ton as appropriate for the sort), Bid deposit amount and type. Signatures and date on bid form must be completed including the bid bond number if bidder is relying upon a bid bond for bid deposit.

Bids shall not be accepted if a completed '**Log Sort Sealed Bid Supplemental Information Form**' is not included with the approved '**Log Sort Sealed Bid Form**'.

**Required log lengths for tonnage sorts:** Preferred log lengths for tonnage sawlog sorts shall include the following plus any additional lengths identified on the Bid Supplemental Information form:

<b>Species Type</b>	<b>Preferred Lengths</b>
Conifer Sorts	16', 20', 24', 26', 32', 40'
Hardwood Sorts	18', 20', 26', 28', 30', 36', 38', 40'

For more specific information, contact the appropriate region office.

### **In-Person Bids**

- A. Sealed bids must be in auction box or auction envelope before 10:00 a.m. on the day of sale at the location specified in the notice of sale.
- B. Sealed bids must be submitted in an envelope with the name of the sale, the bidder's name and the contract agreement number clearly written on the outside of the envelope. The full legal name and business address of the bidder must be inserted where indicated on the form, and must be the same as the name on the bid bond and timber sale contract. The bid form must be signed by an authorized person. When a bidder has more than one person authorized to bid, then documentation of those persons with signature authority for bidding must accompany the bid or be on file at the region office. Sealed bid envelopes are available at all region offices. One bid per envelope.
- C. Sealed bid envelopes must contain the following:
  1. A completed '**Log Sort Sealed Bid Form**';
  2. A completed '**Supplemental Information Form**' and;
  3. A bid deposit

### **Mailed Bids**

- A. Mail-in bid envelopes are required to have printed on the outside: "DO NOT OPEN UNTIL SALE DATE. SEALED BID ENCLOSED." The sealed bid envelope(s) will be enclosed inside the mailed-in envelope. Mailed bids must be submitted in an envelope with the name of the sale, the bidder's name and the agreement number clearly written on the outside of the envelope. The full legal name and business address of the bidder must be inserted where indicated on the form, and must be the same on the bid bond and timber sale contract. The bid form must be signed by an authorized person. When a bidder has more than one person authorized to bid, then documentation of those persons with signature authority for bidding must accompany the bid or be on file at the region office. Mail-in envelopes are available at all region offices. One bid per mailed-in envelope.
- B. Mail-in or otherwise delivered bids will be accepted up to 4:30 p.m. the last business day before the auction by the region office in which the sale is located. Bidders assume the risk for the method of delivery they chose. The DNR assumes no responsibility for any delays caused by any delivery service.
- C. Sealed bid envelopes must contain the following:
  1. A completed '**Log Sort Sealed Bid Form**';
  2. A completed '**Log Sort Sealed Bid Supplemental Information Form**' and;
  3. A bid deposit



# Department of Natural Resources Region Offices

**Olympia Headquarters**  
 1111 Washington St SE  
 MS 47000  
 Olympia, WA 98504-7000  
 (360) 902-1000  
[www.dnr.wa.gov](http://www.dnr.wa.gov)

**Product Sales & Leasing Division**

1111 Washington St SE  
 MS 47014  
 Olympia, WA 98504-7014  
 (360) 902-1600

**South Puget Sound Region**  
 950 Fairman Ave N  
 Enumclaw, WA 98022-9282  
 (360) 825-1631

**Pacific Cascade Region**

601 Bond Road  
 PO Box 280  
 Castle Rock, WA 98611-0280  
 (360) 577-2025

**Southeast Region**

713 Bowers Road  
 Ellensburg, WA 98926-9301  
 (509) 925-8510

**Northwest Region**

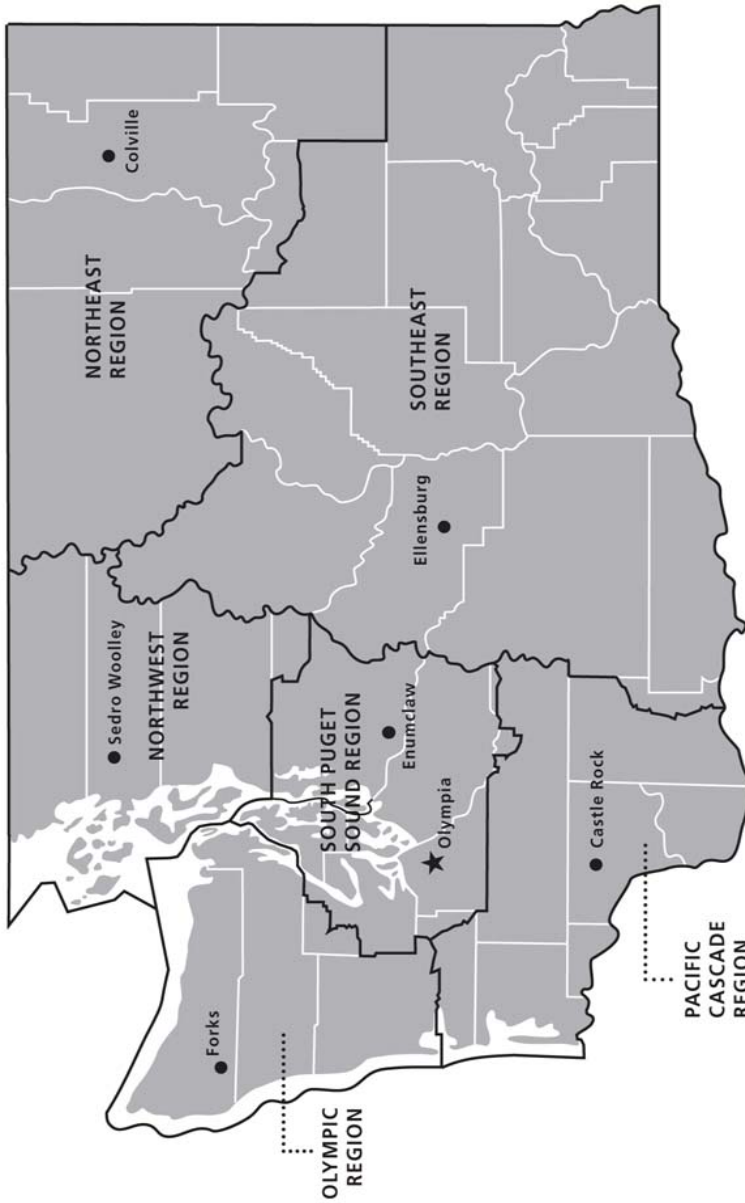
919 N Township St  
 Sedro Woolley,  
 WA 98284-9384  
 (360) 856-3500

**Olympic Region**





411 Tillicum Lane  
 Forks, WA 98331-9271  
 (360) 374-2800

**Northeast Region**

225 S Silke Road  
 PO Box 190  
 Colville, WA 99114-0190  
 (509) 684-7474



**DNR REGIONS**

-  DNR Region Boundaries
-  County Boundaries
-  DNR Region Office
-  Olympia Headquarters



WASHINGTON STATE DEPT OF  
**NATURAL RESOURCES**



For more information about how public lands are managed visit DNR's web page at [www.dnr.wa.gov](http://www.dnr.wa.gov)

Fire, Burn Ban Information and Region Offices  
 Toll Free: 1-800-527-3305 General TTY: 7-1-1





WASHINGTON STATE DEPT OF  
**NATURAL  
RESOURCES**

1111 WASHINGTON ST SE  
MS 47014  
OLYMPIA WA 98504-7014

[www.dnr.wa.gov](http://www.dnr.wa.gov)

For alternate formats  
of this document,  
Call (360) 902-1000  
TRS: 7-1-1

PRINTED IN THE USA ON RECYCLED PAPER

