

# Trombetta Canyon

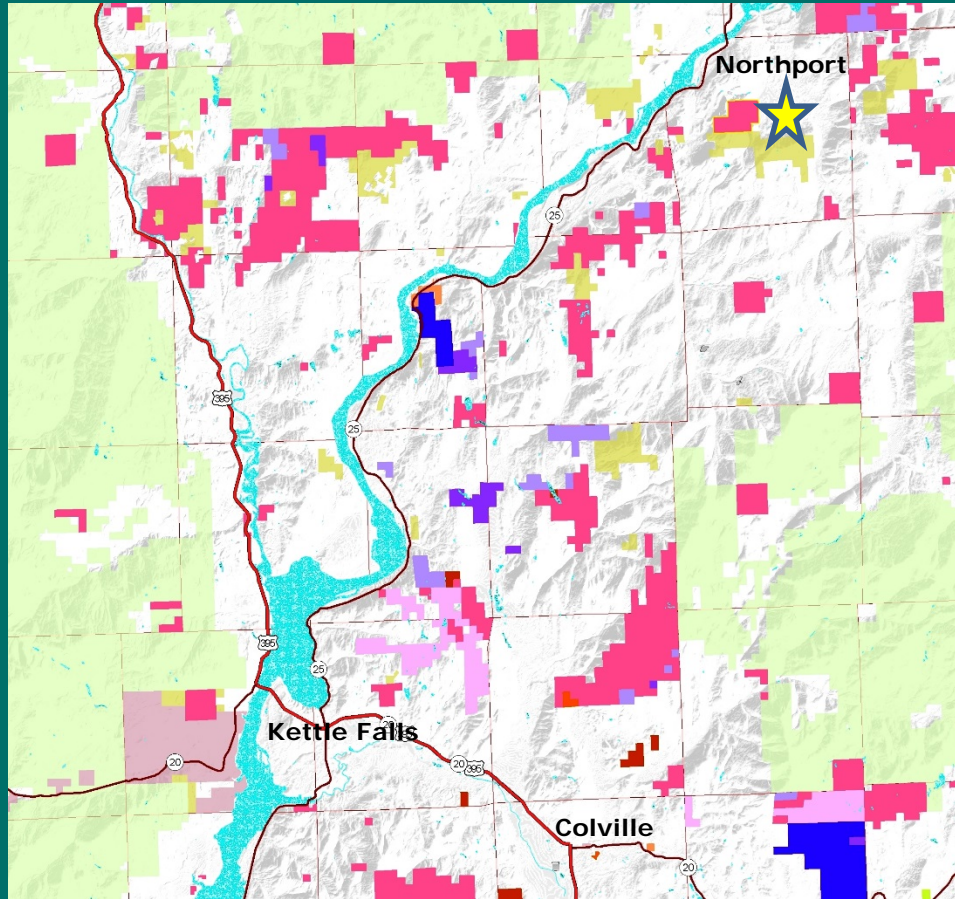
# Trust Land Transfer

## 02-090370

# Stevens County



# Trombetta Canyon Trust Land Transfer

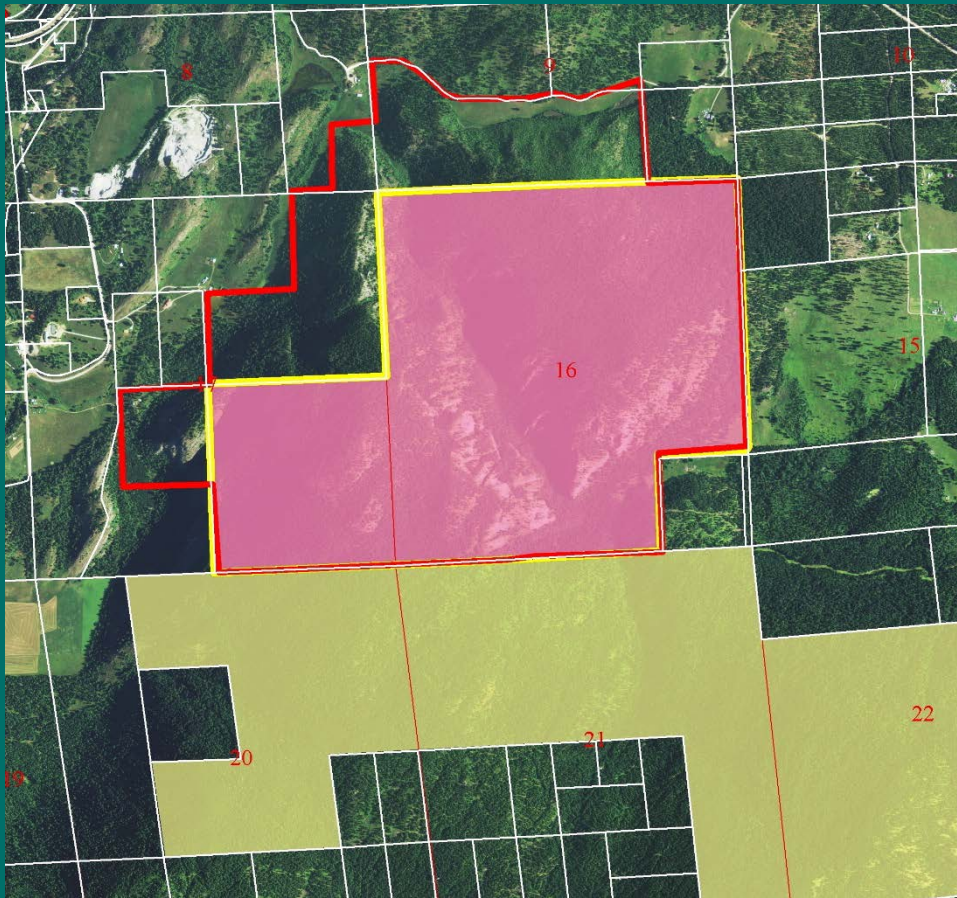


Stevens County

Near Northport &  
the Canadian  
Border

Transfer to  
Trombetta  
Canyon NAP

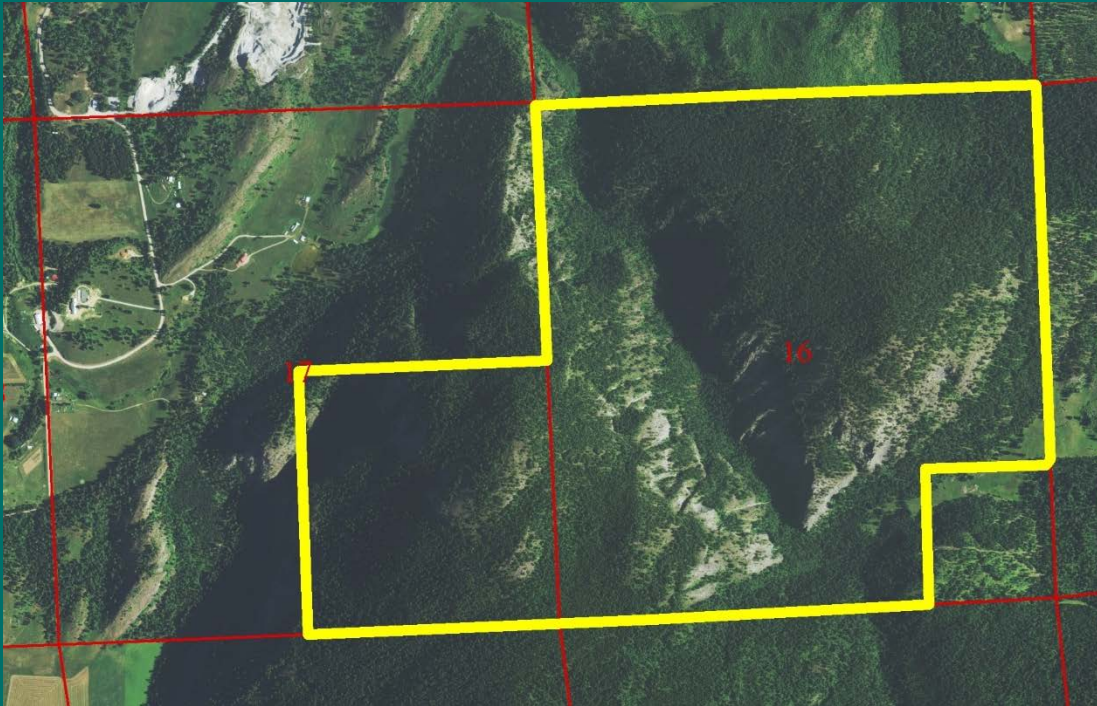
# Trombetta Canyon Trust Land Transfer



**Trombetta  
Canyon NAP –  
approved  
boundary**

**Largest parcel  
in the NAP  
boundary**

# Trombetta Canyon Trust Land Transfer



Common  
School Trust  
S. 16 & 17

760 acres

Second growth  
DF, RC, GF

# Trombetta Canyon Trust Land Transfer

North end of parcel



Middle of parcel



# Trombetta Canyon Trust Land Transfer



hoary willow - Joe Arnett



Joe Arnett



Steller's rockbrake - DNR photo



yellow mountain-avens - DNR photo

# Trombetta Canyon Trust Land Transfer

## Appraised Value of Transfer Property

|               |                |                     |                      |
|---------------|----------------|---------------------|----------------------|
| Timber        | (6,284 MBF)    | \$ 1,350,000        | \$ 215 /MBF          |
| Land & Reprod | (760.00 acres) | \$ 350,000          | \$ 461/acre          |
| <b>TOTAL</b>  |                | <b>\$ 1,700,000</b> | <b>\$ 2,237/acre</b> |

## Distribution of Funds

**Timber Value - Common School Construction Account**

**Land Value - Real Property Replacement Account**



# Trombetta Canyon Trust Land Transfer



Questions ?

Resolution # 1437

DNR Photo





WASHINGTON STATE DEPARTMENT OF  
**Natural Resources**

---

**Peter Goldmark** - Commissioner of Public Lands