



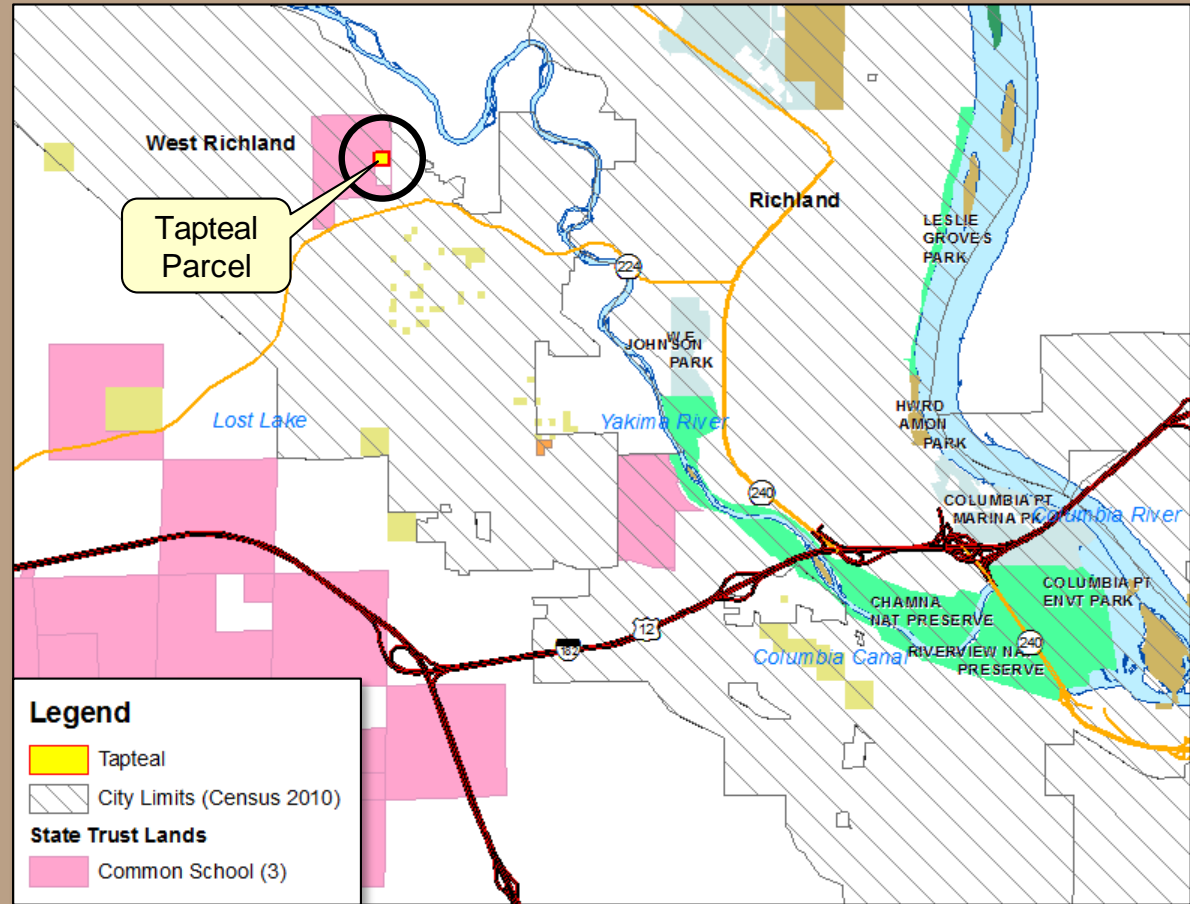
Tapteal Direct Transfer

Benton County



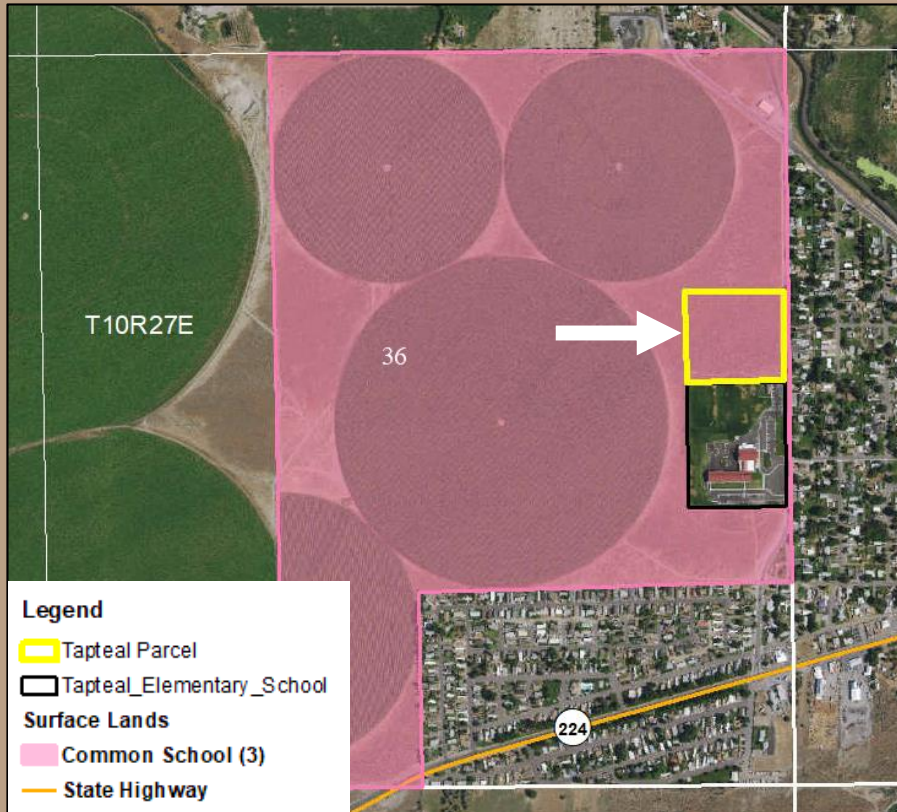
Tapteal Vicinity

- Within city limits of West Richland
- Benton County
- 10 acres



Tapteal

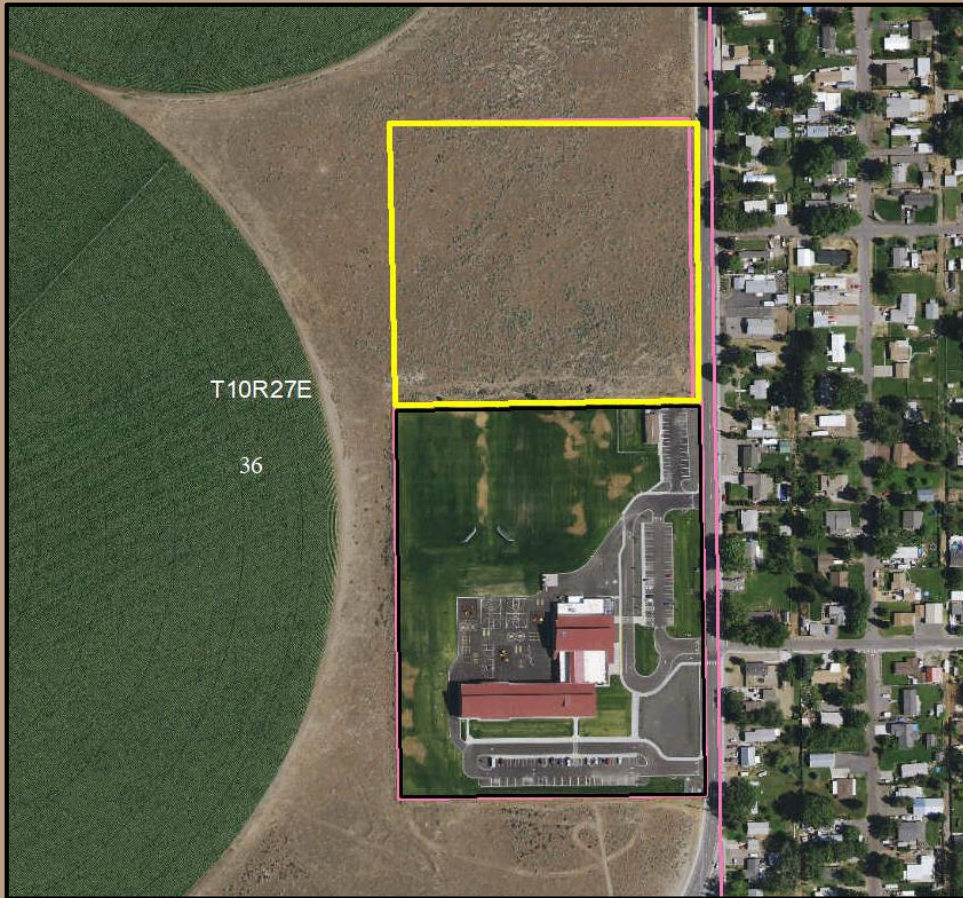
Property Information



- 10 acres in size
- Non-irrigated portion of the property
- Common School Trust property
- Proposed transfer to the Richland School District

Tapteal

Overview



- Property is on the Urban Transition list
- BLA and survey have been paid for and completed by the Richland School District

Tapteal



**Appraised
Value:**

\$961,000

Photo taken from Google Earth



Tapteal

Benefits (Disposition)

- The proceeds will be used to purchase replacement land for the Common School Trust.
- Transfers the property to a school district for school purposes.
- Captures the asset value for an urban transition property.



Tapteal

Resolution

Questions ?

Resolution No. 1610



