



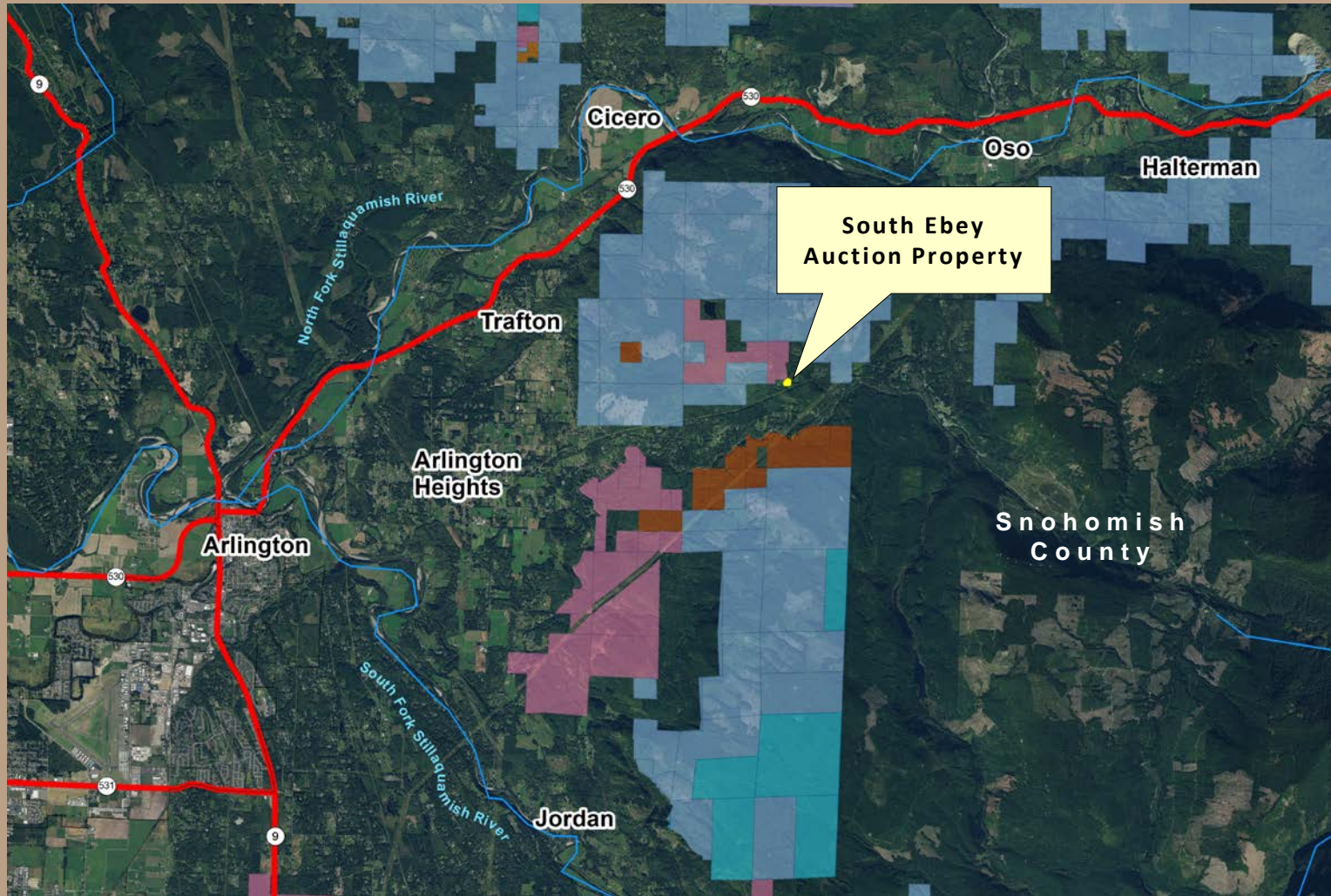
# SOUTH EBHEY

Public Auction

Snohomish County

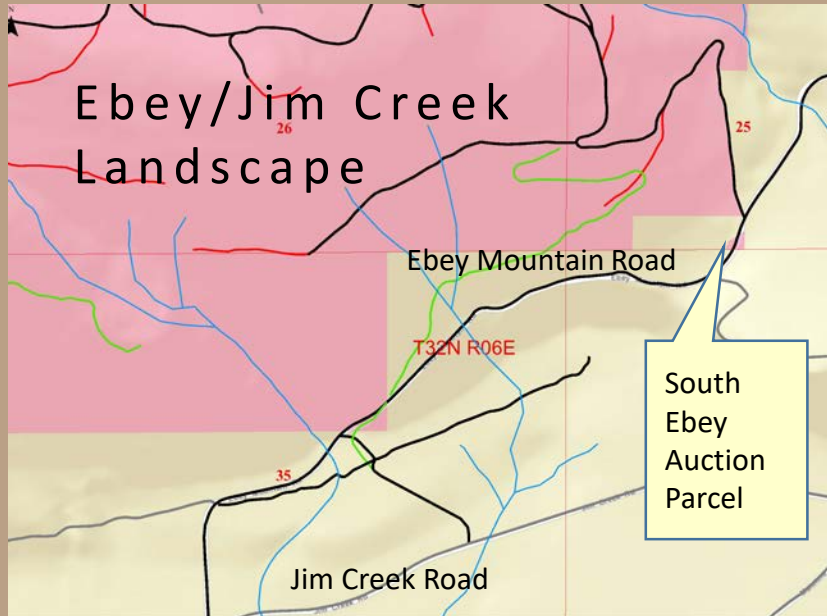


# South Ebey Auction



# South Ebey Auction

- Acquired as part of obtaining 363 acres in a 2004 land exchange
- Common School Trust; Transfer would reposition the trust asset
- Not contiguous with other trust land and no economic utility for DNR; costs for easement granting requests
- Highest and Best Use - sale to a neighbor



# South Ebey Auction



- 0.29 (DNR ac) +/- acres; not surveyed
- Zoning is F – Forest District; 1 home / 20 ac; minimum 300' lot width & 100' setback
- Cover may include a few trees and part of one or two roads
- Administrative fee of \$7,500 paid by neighbor to bring property to auction

# South Ebey Auction

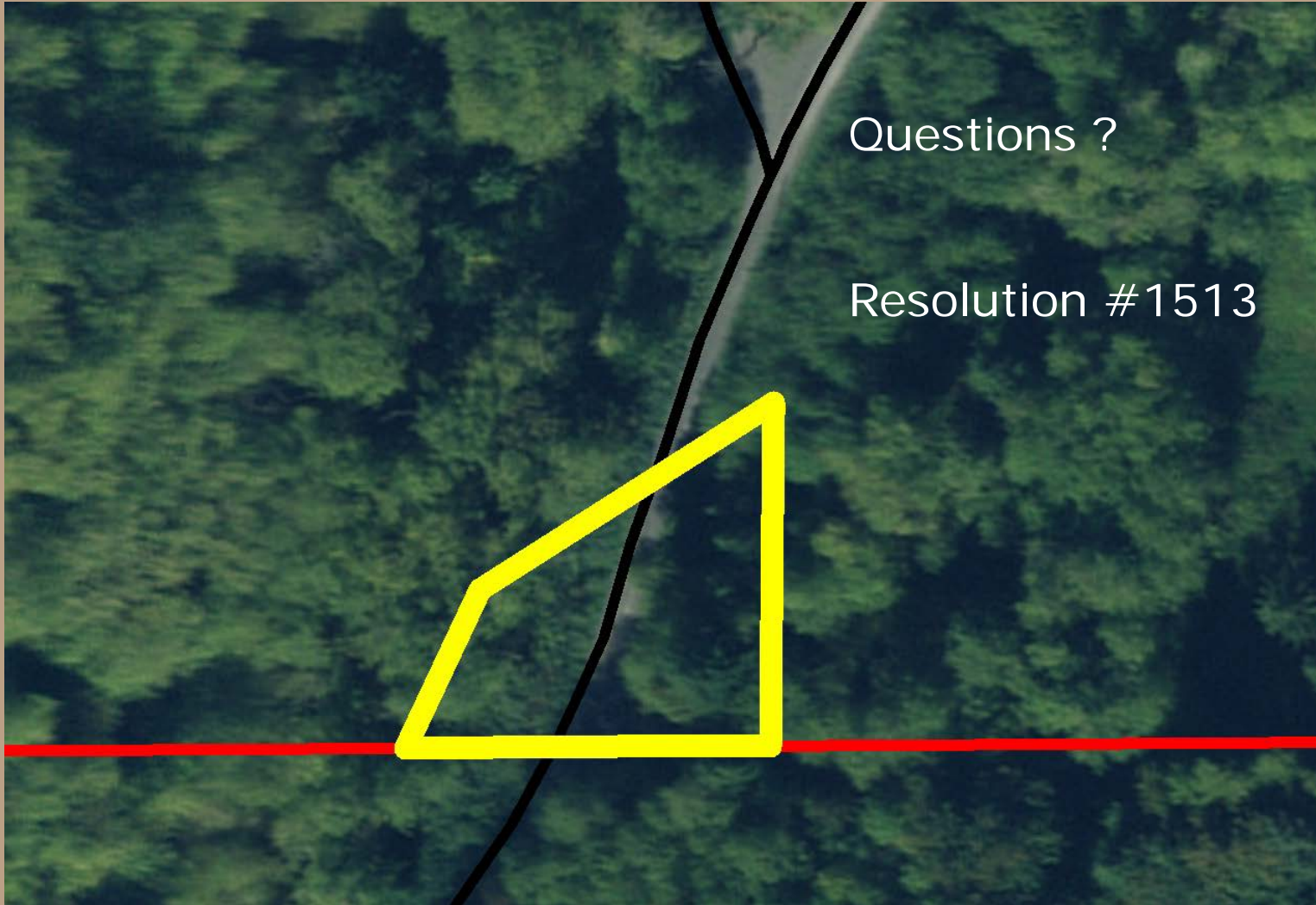
## Appraised Value

Appraisal	Approx. Acreage	Appraised Value – Recommended Minimum Bid
Fee Interest	0.29	\$ 2,200

Note: This minimum bid price equates to \$7,500 per acre at 0.29 acres in size.



# South Ebey Auction



Questions ?

Resolution #1513



