



Public Auction

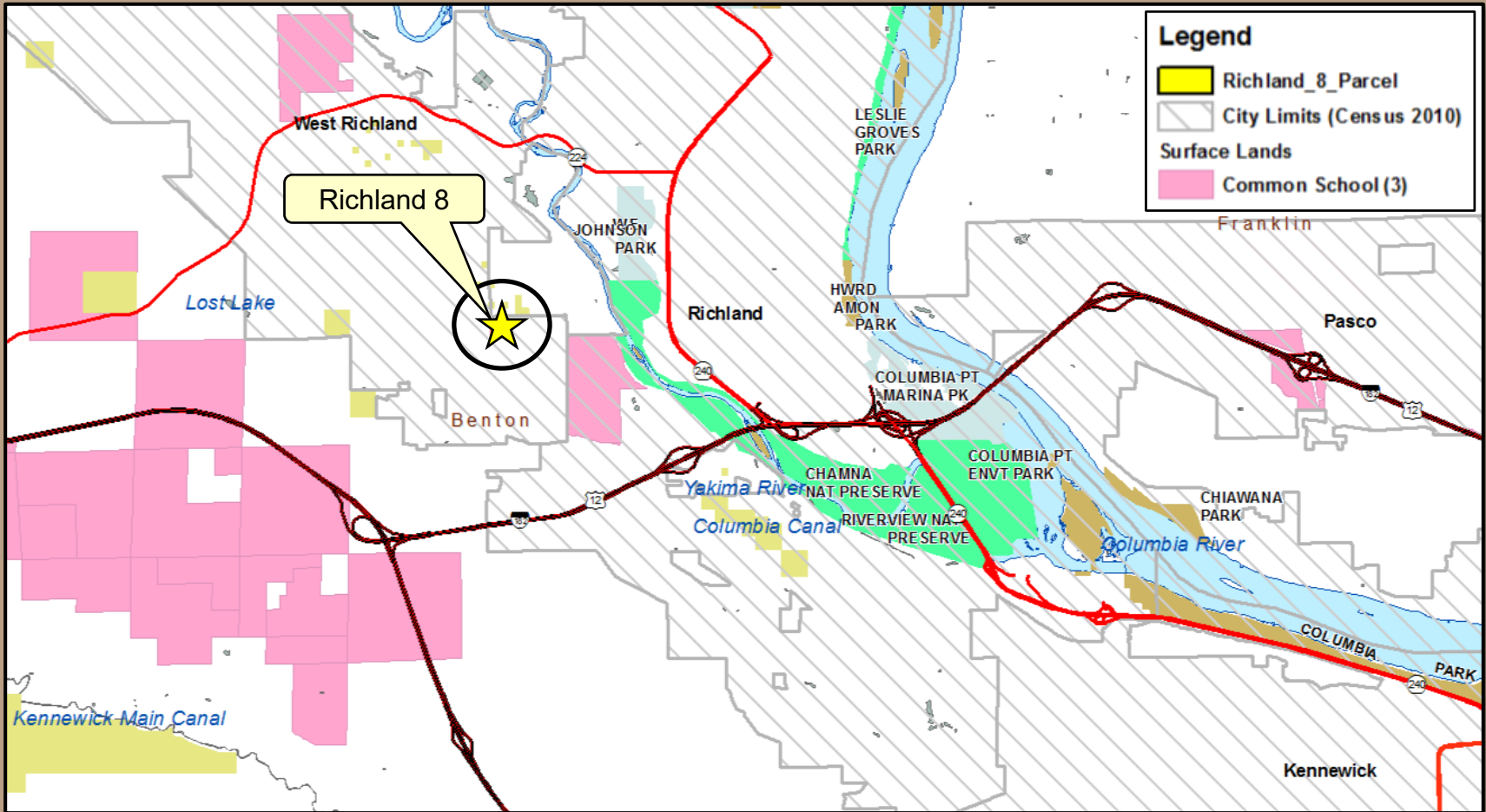
Richland 8

Benton County



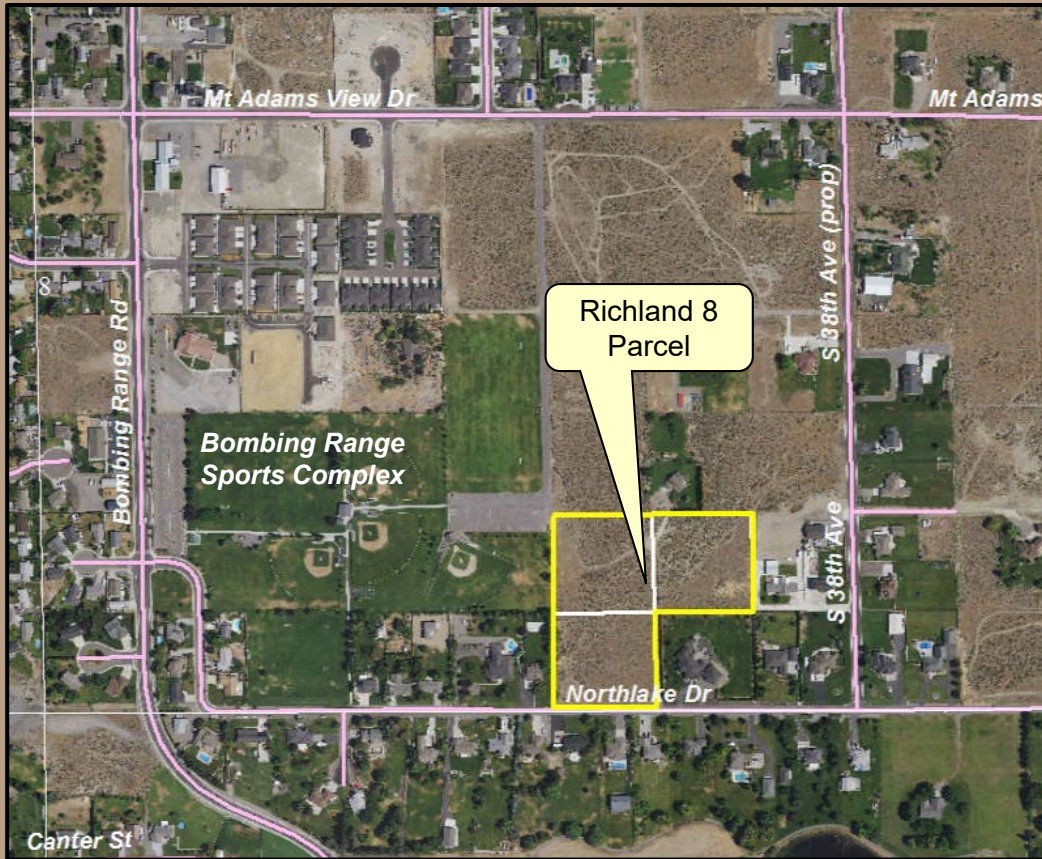
Richland 8 Auction

Vicinity Map



Richland 8 Auction

Parcel Information



- 7.5 acres
- City of West Richland
- Adjacent to Bombing Range Sports Complex
- County Road access on Northlake Road
- Land Bank property



Richland 8 Auction

Parcel Information



- Three vacant 2.5 acre Government Lots
- Zoning: Rural Low Density RL 40; up to 8 DU total
- Water: City to Lot 247
- Sewer not available onsite septic

Richland 8 Auction

Valuation

Appraisal	Approx. Acreage	Appraised Value – Recommended Minimum Bid
Fee Interest	7.5 acres	\$498,000



Richland 8 Auction

Auction

- Public Auction - Oral Bids taken in Benton County
- Auction Revenue to Land Bank to acquire replacement trust land



Richland 8 Auction

Resolution

Questions ?

Resolution No. 1593



