



Chehalis Oxbow Transfer

02-09316



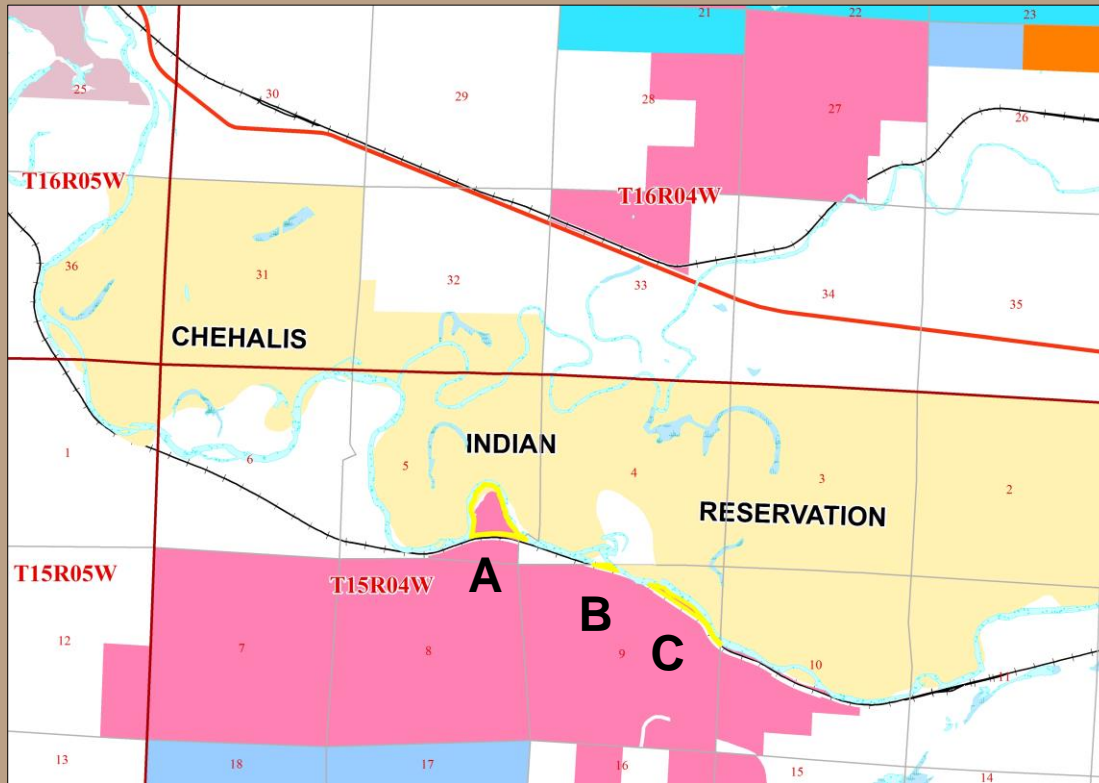
Sam Romanaggi - Parcel A on right

Grays Harbor County



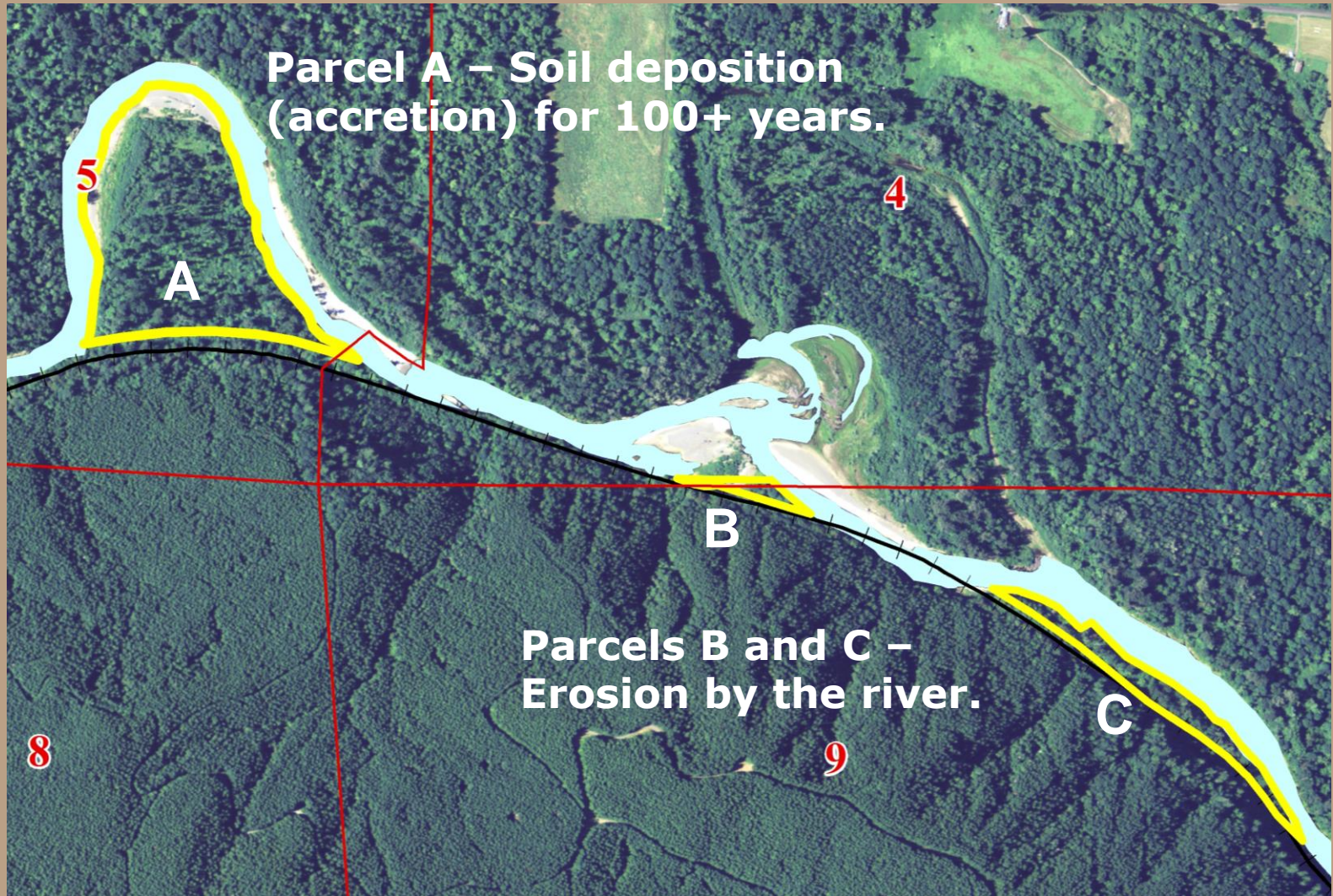
Chehalis Oxbow Transfer

Property Overview



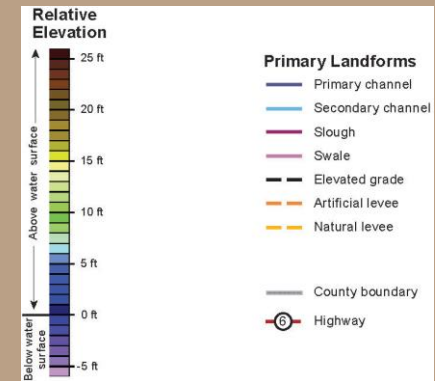
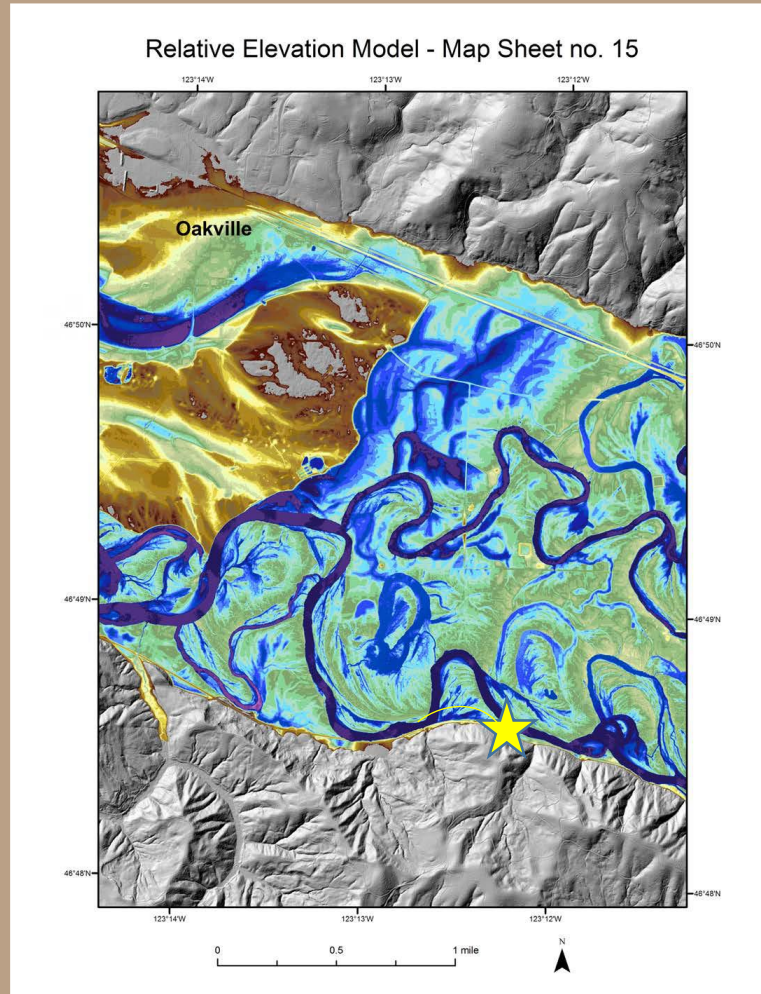
- Common School Trust
- Three parcels; 30 acres total
- Located in 100 year floodplain of Chehalis River
- North of abandoned railroad grade
- Tribal interest

Chehalis Oxbow Transfer



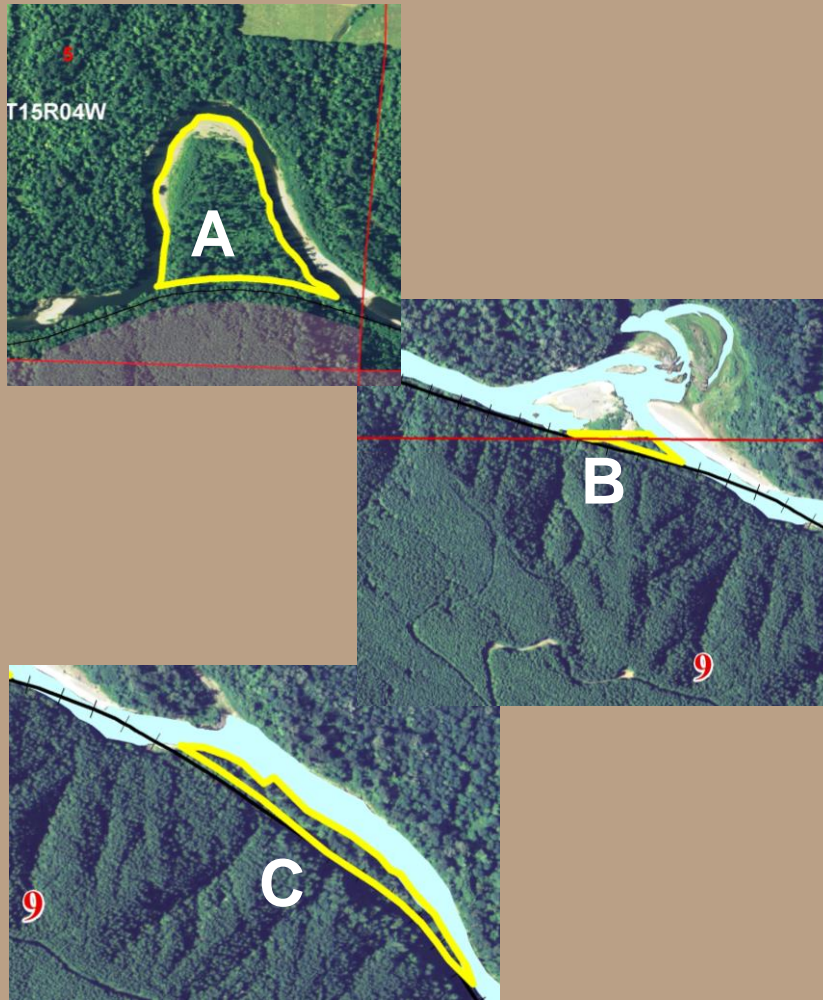
Chehalis Oxbow Transfer

Channel Migration through Time



DGER – 2014
Circular #118 P.34

Chehalis Oxbow Transfer



Property Features

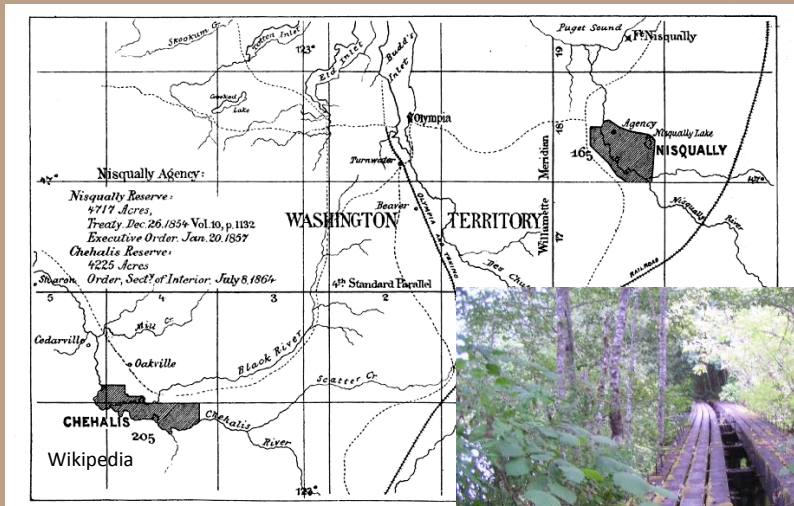
- No roads
- Trees in riparian zone
– not harvestable
- Access by boat or hiking
- HBU: Recreation, camping, habitat, open space



Chehalis Oxbow Transfer

Chehalis Interest

- Reservation Boundary - Treaty 1854
- Own railroad grade - acquiring lands north of railroad
- Fisheries and fish habitat



DNR photo



DNR photo

Chehalis Oxbow Transfer

Appraisal

Appraisal	Acreage	Land Value	Total
Chehalis Oxbow	30 Acres	\$30,000	\$ 30,000 \$1,000/acre

Distribution of Funds

100% to Real Property Replacement Account



Chehalis Oxbow Transfer



Questions ?

Resolution #1494

Sam Romanaggi - Parcel A on left



