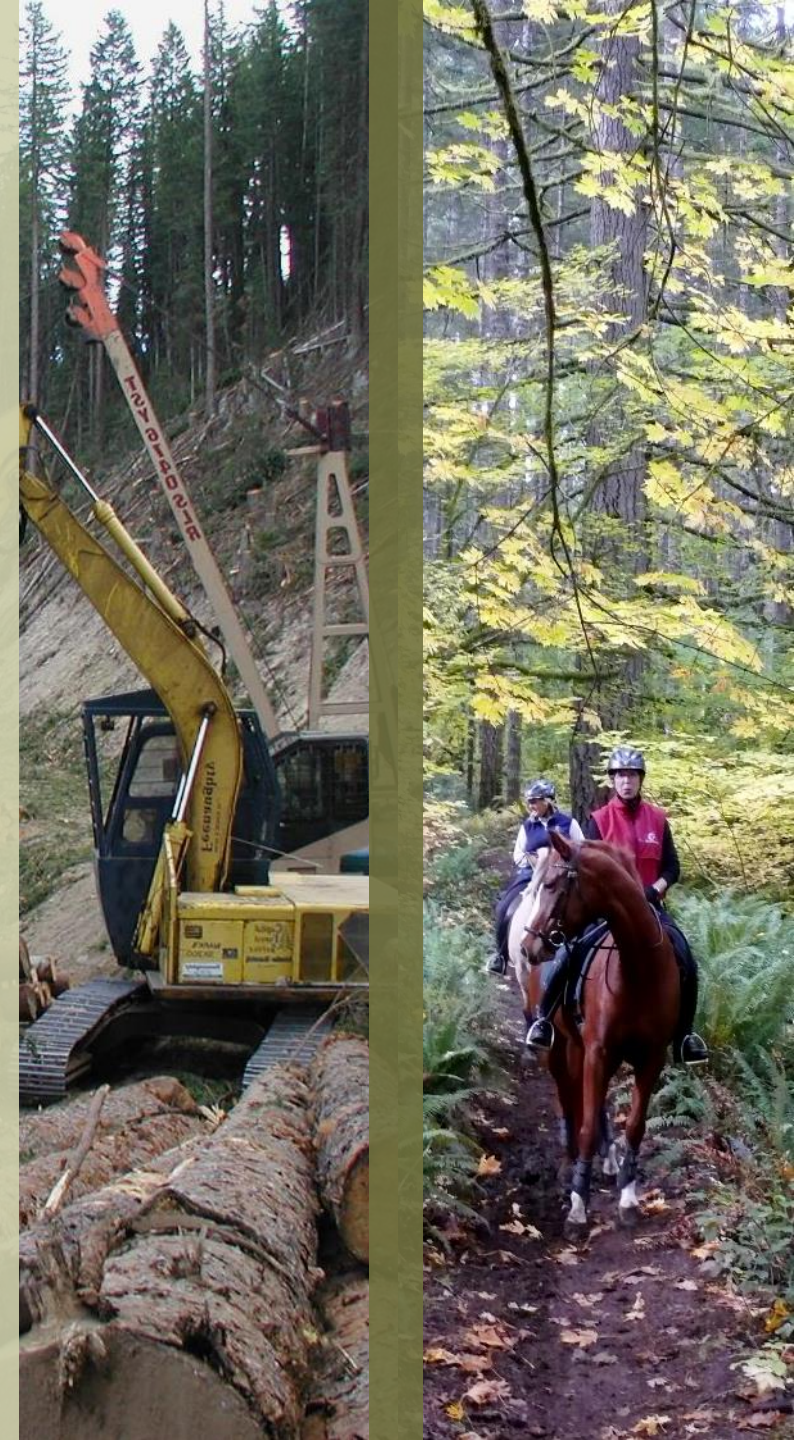


Collaborative Asset Management Outreach Project

Board of Natural Resources
September 5th, 2023

Sarah Ogden, Trust Outreach Specialist



Project Context

- There have been increasing requests to defer or cancel timber sales by county leadership.
- There is an increasing division between beneficiaries in some counties.
- This indicated a need for more information, education, and dialogue with trust beneficiaries.
- Presented an opportunity to listen more closely to counties and better understand their goals and priorities.



What Is CAMO?

- Created to begin collaborative efforts on asset management with county leadership.
- Focused on trust land assets within each county, specifically state forest transfer lands
- Focused on education, understanding, and dialogue.
- Inclusive of all trust beneficiaries.
- Goal: to develop a shared understanding about the plan for trust land management in each county.



Collaborative Engagement with DNR

- There are wide variety of opinions and concerns about specific timber sales, and our management in general.
- Each choice DNR makes has **complicated trade-offs**.
- Each county has **different thresholds** for the risks and trade-offs that they are willing to consider.
- DNR will work with counties to better understand those thresholds and learn how we can use new and existing tools to be more flexible in our management.
- DNR will maintain our current trust obligations.



DNR Baseline



A
Revenue to
support local
services



D
Carbon storage



B
Sustainable
Forest
Management



E
Contribution to
rural economies



C
Fish & Wildlife
Habitat Conservation



F
Multiple use

Tools Available

- As we consider “adjusting the dial,” DNR and county beneficiaries have a wide variety of tools at our disposal to tailor the management of trust lands to different types of priorities
- These tools can help DNR achieve different types of objectives:
 - Conserve rare or critical ecological features or habitat
 - Improve trust asset performance
 - Improve access to recreation
 - Increase carbon sequestration or storage
 - Support local mills and rural economies



DNR Management Tools

Tool	Description	Timeframe	Themes
Direct Transfer	Allows trust land to be transferred to eligible recipients, at fair market value, which allows the recipient to use these lands for any purpose that is consistent with local zoning. DNR to reinvest the revenue back into the purchase of replacement lands for the same trust.	Short-Mid	Revenue Generation, Timber, Carbon stored
Forest Carbon Leasing	Allows DNR to enter into leases for carbon projects on the voluntary market, for a term of 40 to 99 years.	Mid-Long	Carbon stored, Conservation
Land Exchange	Exchange of county trust land for non-trust land of equal value.	Mid	Revenue Generation
Land Pooling	New trust land can be purchased for two or more counties with an agreement to share revenue generated from the land.	Mid-Long	Revenue Generation, Timber, Carbon stored
Reconveyance	Returns state forest trust lands to county ownership to be managed as park space, consistent with State Outdoor Recreation Plans	Long	Conservation
Trust Land Transfer	Allows DNR to work with eligible recipients to reposition state forest trust lands to be managed for ecological or recreation purposes and purchase replacement land for sustainable revenue for the same trust.	Short-Mid	Conservation, Carbon stored

DNR Management Tools: New Funding

Tool	Description	Timeframe	Themes
Avoided Conversion	\$70 million to purchase new forestland, prioritizing lands at risk of conversion to a non-forested use, in order to offset the transfer of up to 2,000 acres of structurally complex, carbon dense state trust forest lands out of trust status in counties west of the Cascade mountains, all of Skamania county, and the western portion of Klickitat county.	2023-2025	Multiple use
Silviculture	\$13.1 million for silvicultural treatments to enhance forest stand growth on managed trust lands in western Washington.	2023-2025	Multiple use
Engagement and Analysis	\$2.5 million to conduct a regional wood basket analysis of current timber supply and the impacts of potential management changes on supply, and to convene a stakeholder group that will collaborate on approaches related to the conservation and management of structurally complex forest stands	2023-2025	Multiple use
Engagement and Analysis	\$1.5 million to convene a stakeholder group to conduct an ecosystem services inventory and develop a state trust lands ecosystem services asset plan to generate revenue, reduce GHG emissions and increase carbon storage.	2023-2025	Multiple use

Project Next Steps

- Initial meetings for Cohort I counties will begin in September.
- County meetings will continue, as needed, through the fall and winter.
- Additional counties will be selected for a second cohort, including those that have expressed interest in collaboration and those that have been proactively identified by staff.

