

Beausite Lake

Inter-Trust Exchange

86-090570

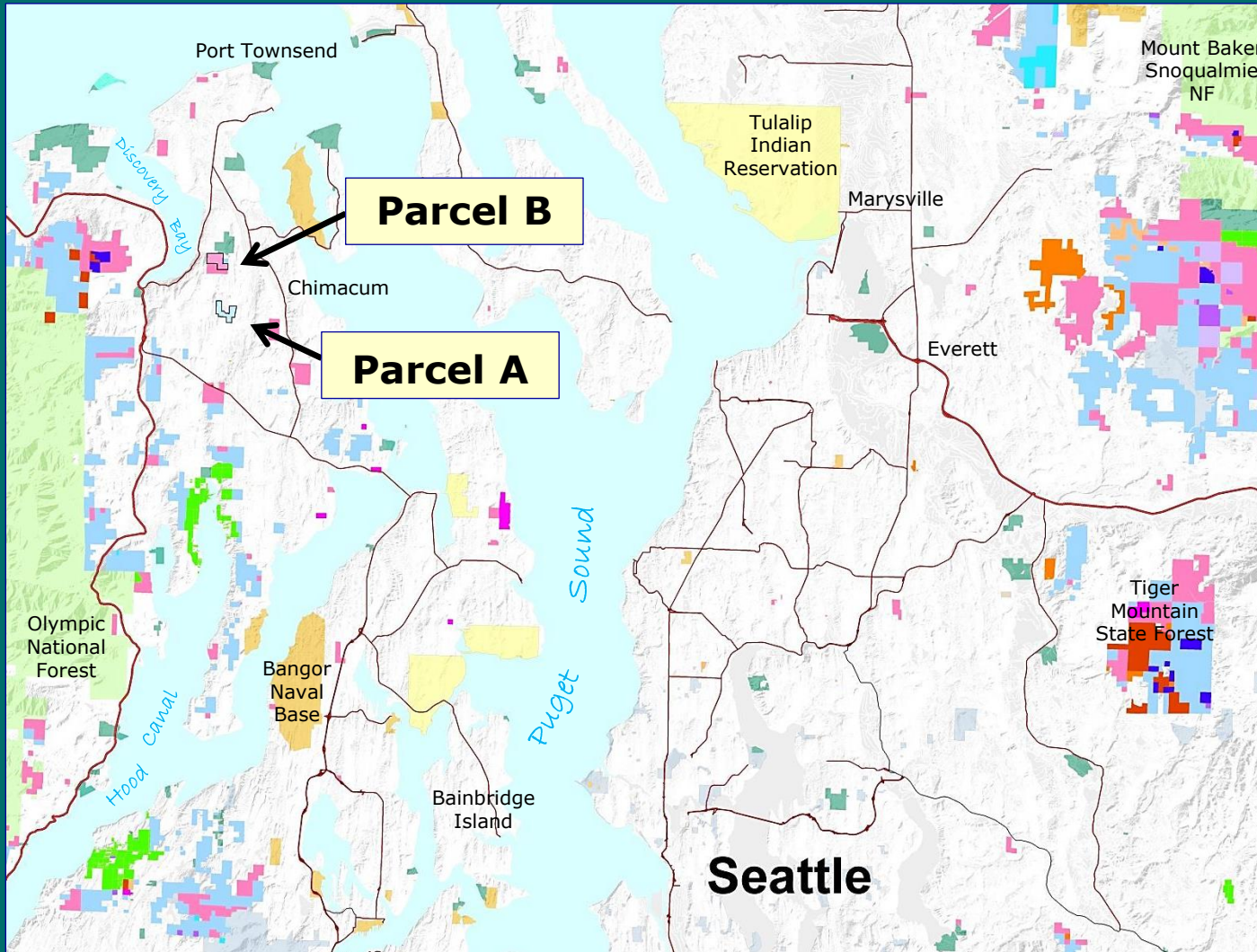
Trust Land Transfer

02-090358

Jefferson County



Exchange Vicinity Map



**Parcel A –
TLT Transfer
Parcel State
Forest Land
(SFL) Trust**

**Parcel B –
Common
School
(CS) Trust**

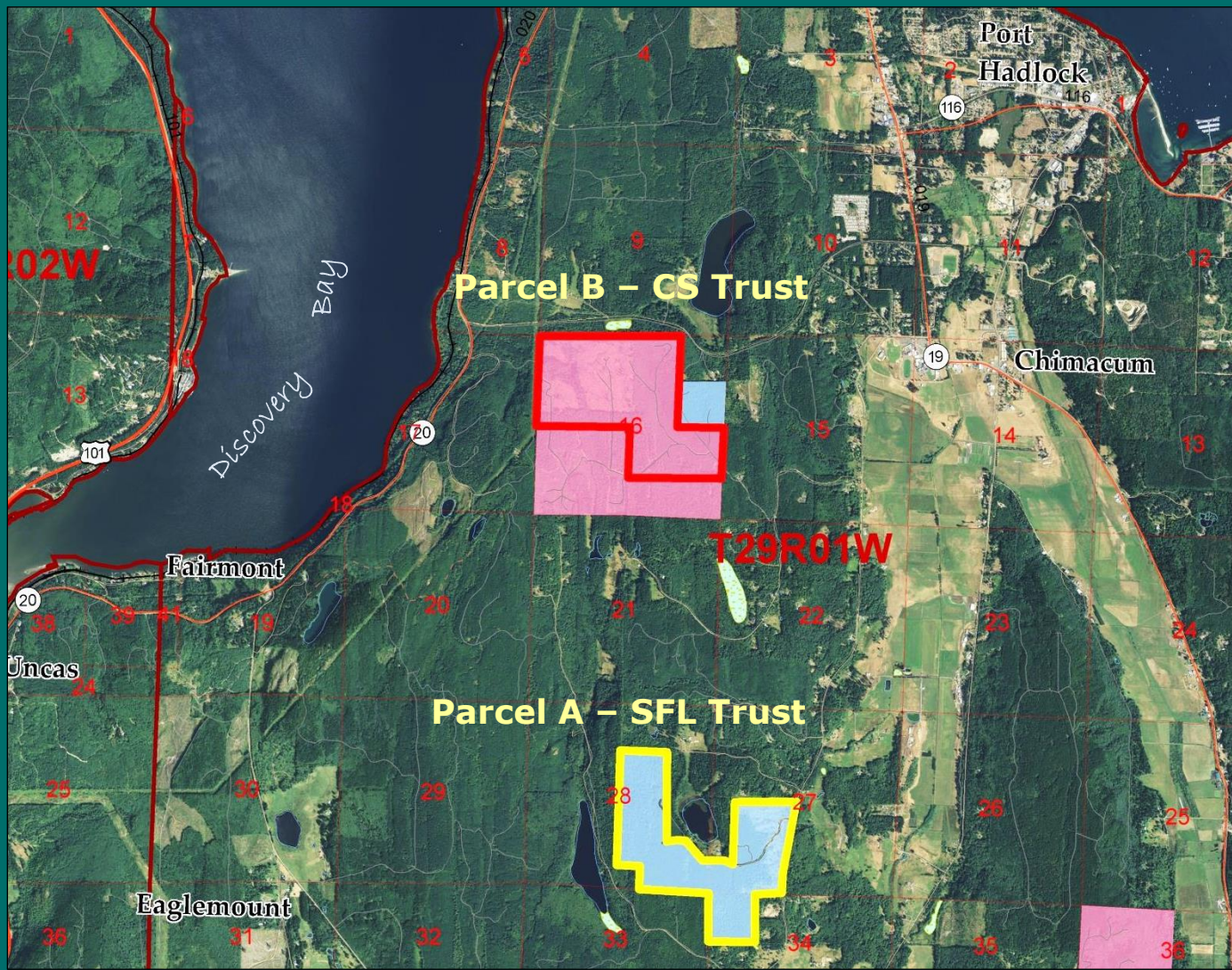
Exchange Parcels

**Parcel A -
Transfer Parcel**

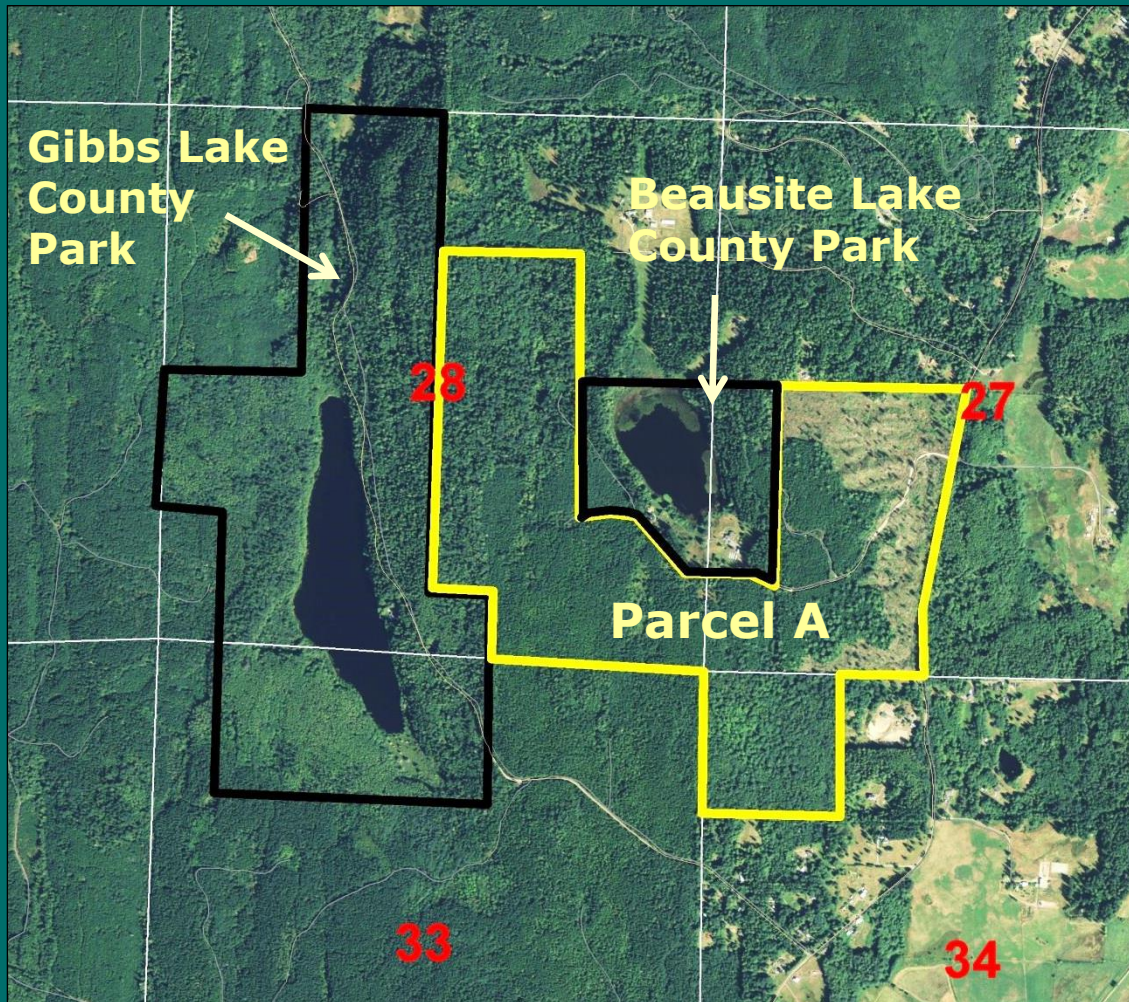
**Not currently
CS Trust**

**Parcel B -
CS Trust**

**Exchange
permits the
TLT transfer
of Parcel A**

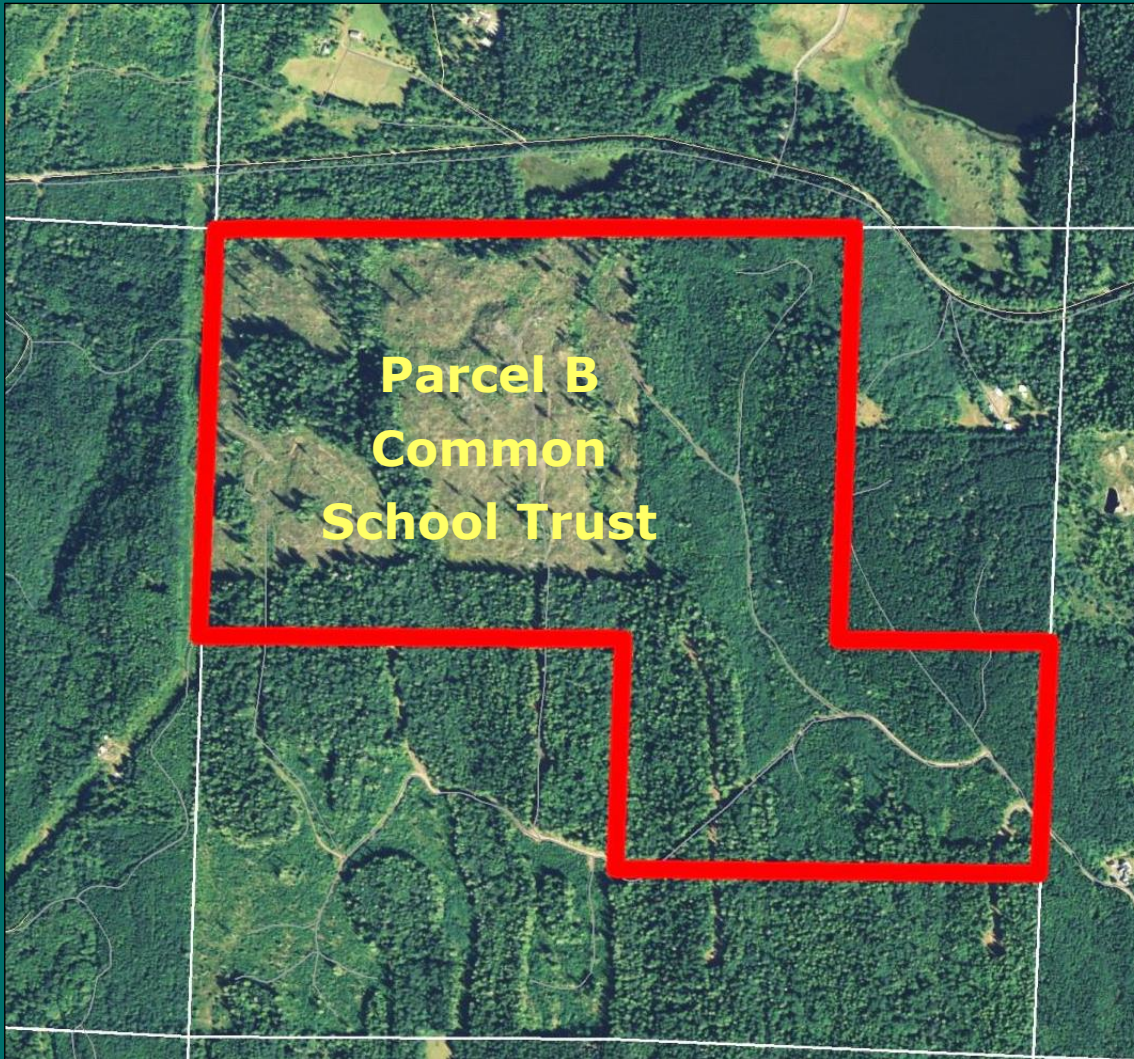


Parcel A - Overview



- SFL Trust in S. 27, 28 and 34
- Becomes Common School Trust in the exchange
- Future transfer to Jefferson County

Parcel B - Overview



- **Common School Trust will be re-designated as State Forest Land Trust**
- **Remains under DNR management**

Parcel B - Overview

- **Various age classes**
- **Some Puget Sound views**
- **Easement road access**



Bob Winslow photos

Inter-Trust Exchange Property Values

Parcel A (SFL to CS)

Timber (2,875 MBF)	\$1,230,000	\$428/MBF
Land (305.2 acres)	\$523,000	\$1,714/acre
Total Parcel A	\$1,753,000	

Parcel B (CS to SFL)

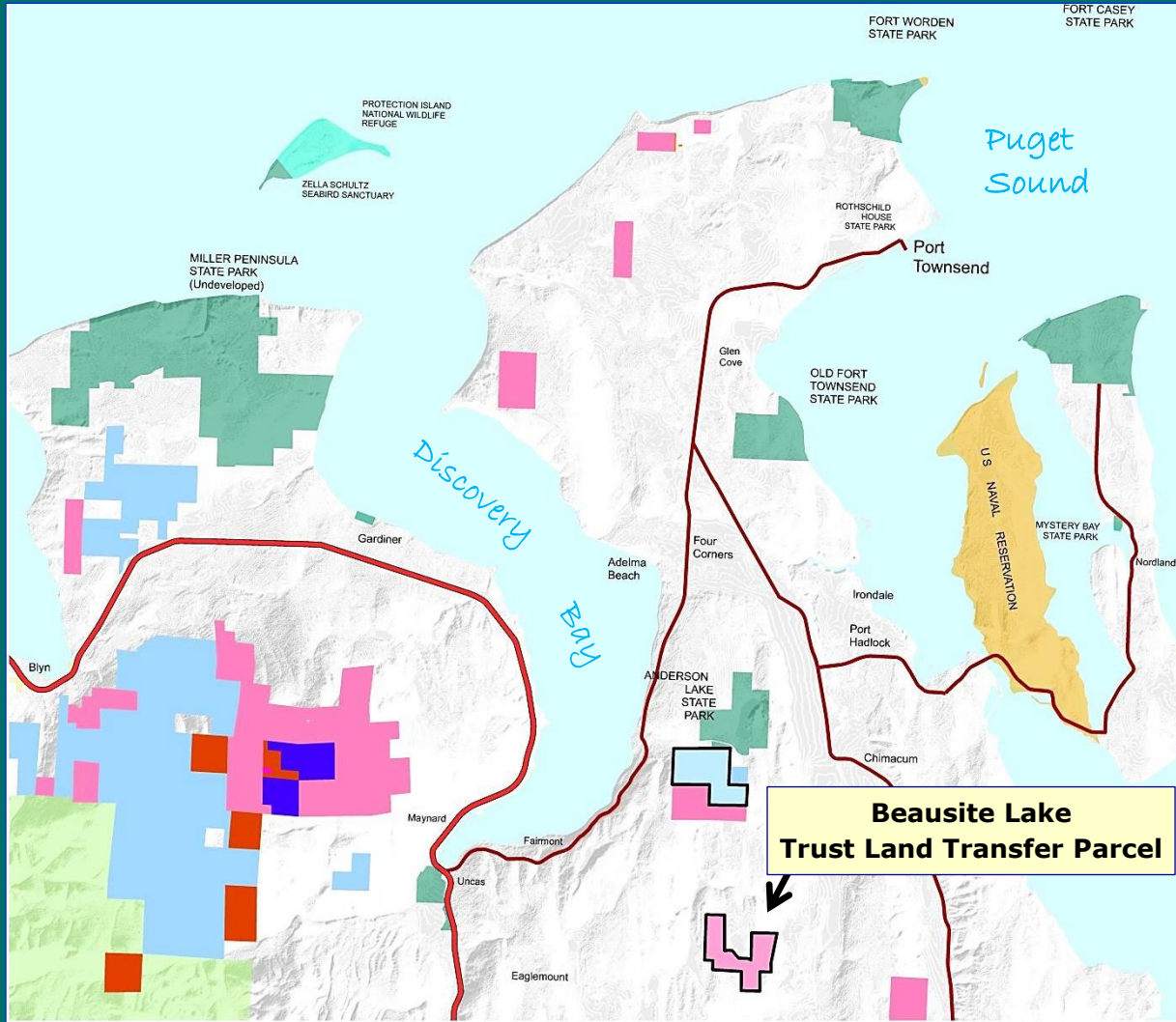
Timber (2,066 MBF)	\$1,400,000	\$678/MBF
Land (319.51 acres)	\$353,000	\$1,105/acre
Total Parcel B	\$1,753,000	

Inter-Trust Exchange Public Hearing

- **Public hearing at Port Hadlock Library on Feb. 27, 2014**
- **75 people attended**
- **All but two of 57 comments in favor**



Vicinity Map Trust Land Transfer



Trust Land Transfer Property Values

TLT Transfer Parcel

Timber (2,875 MBF)	\$1,230,000	\$428/MBF
Land (305.2 acres)	\$523,000	\$1,714/acre
Total Parcel A	\$1,753,000	



Beausite Lake

Inter-Trust Exchange Resolution # 1423

Trust Land Transfer Resolution # 1424





WASHINGTON STATE DEPARTMENT OF
Natural Resources

Peter Goldmark - Commissioner of Public Lands