



WASHINGTON STATE DEPARTMENT OF  
**Natural Resources**

---

**Peter Goldmark** - Commissioner of Public Lands

# Western Washington Sustainable Harvest Calculation

For forested State Trust Lands  
A Report to the  
Board of Natural Resources

Kyle Blum  
February 2014



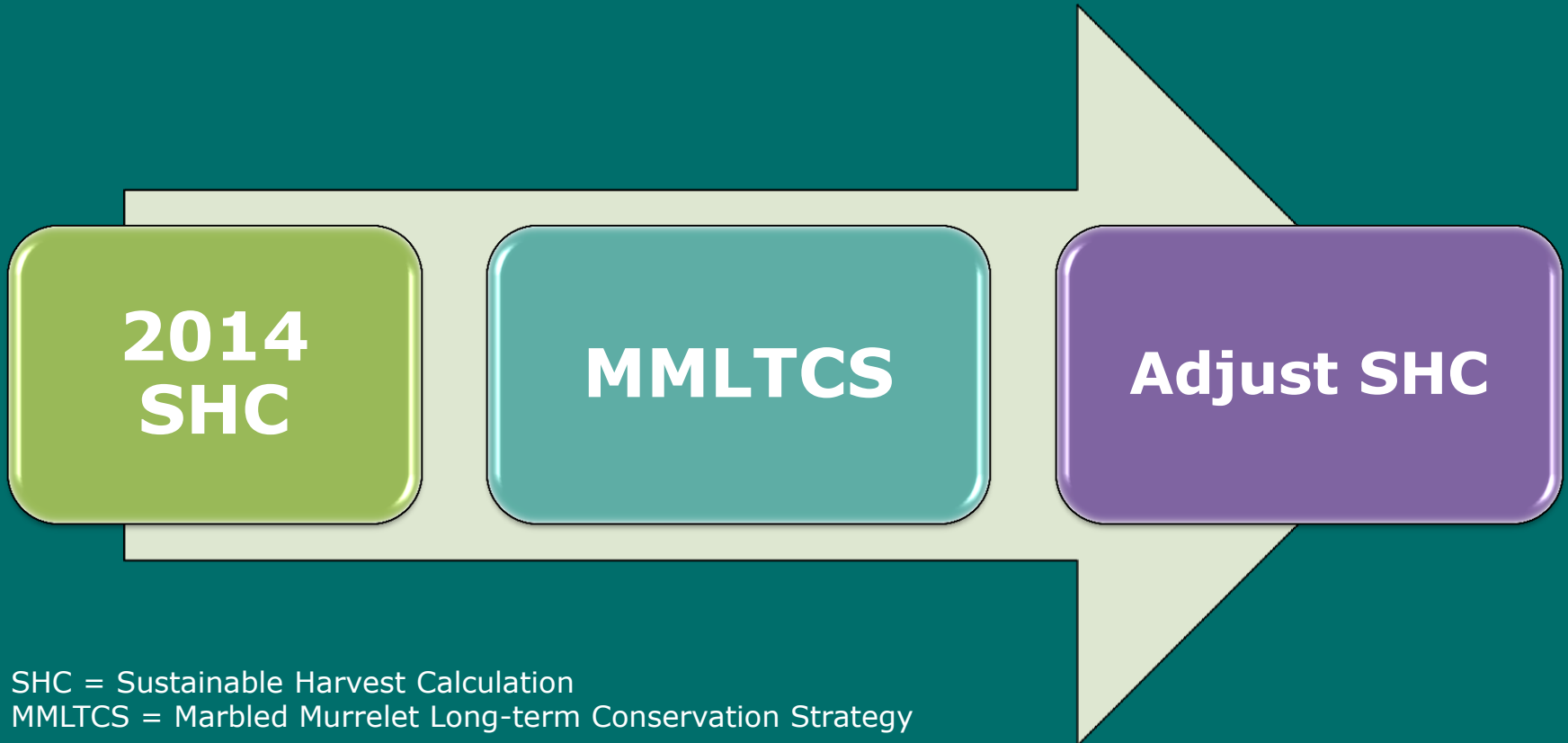
# Sustainable Harvest Topics

- Context with Other Plans
- RCW's and Policy
  - Sustainable Harvest RCWs
  - Policy for Sustainable Forests
- Sustainable Harvest Calculation
  - Review of the 2004 and 2007 calculations
- Timeline



# Timeline – the longer term

## Major State Lands Planning Projects



SHC = Sustainable Harvest Calculation

MMLTCS = Marbled Murrelet Long-term Conservation Strategy

# Timeline – Short Term

## Sustainable Harvest Calculation

### February

- Background presentation

### March/April

- In depth look at modeling assumptions

### May

- Harvest Volumes
- Environmental Analysis
- Arrearage

### June

- Sustainable Harvest Recommendation Resolution



# Revised Code of Washington (RCWs)

- **RCW 79.10.310**
  - "Sustained yield plans"
- **RCW 79.10.320**
  - Sustainable harvest program
- **RCW 79.10.330**
  - Arrearages — End of decade
- **RCW 79.10.340**
  - Sustainable harvest sale

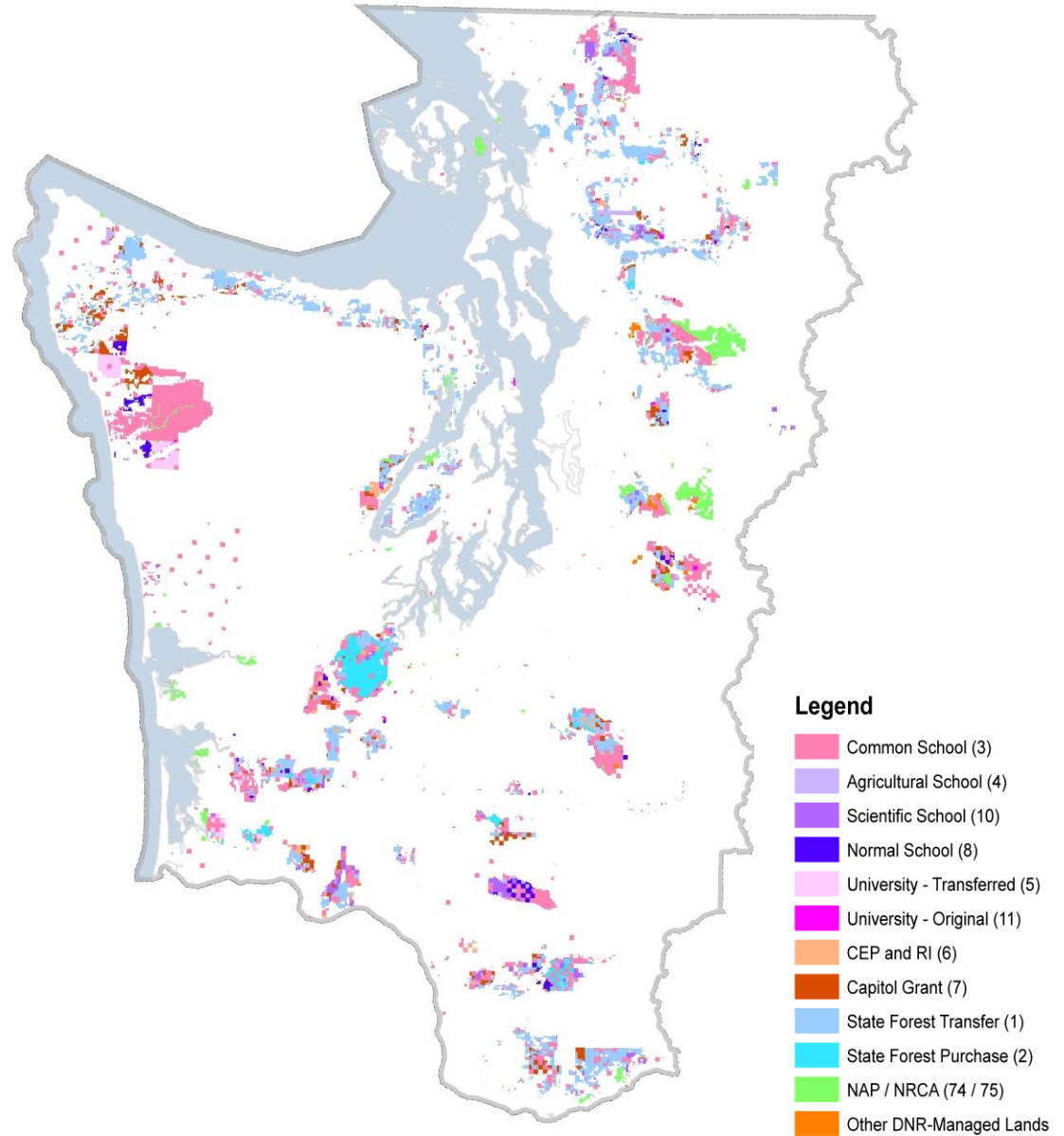


# Policy for Sustainable Forests (PSF)

- Definition of sustainability for the sustainable harvest calculation
  - 20 sustainable harvest units
  - A harvest level for each unit
  - Harvest flow controls
  - Optimize the economic value of the forest over long term
- Recalculation of the sustainable harvest level
- Harvest deferral designations



# DNR managed forests lands in Western Washington

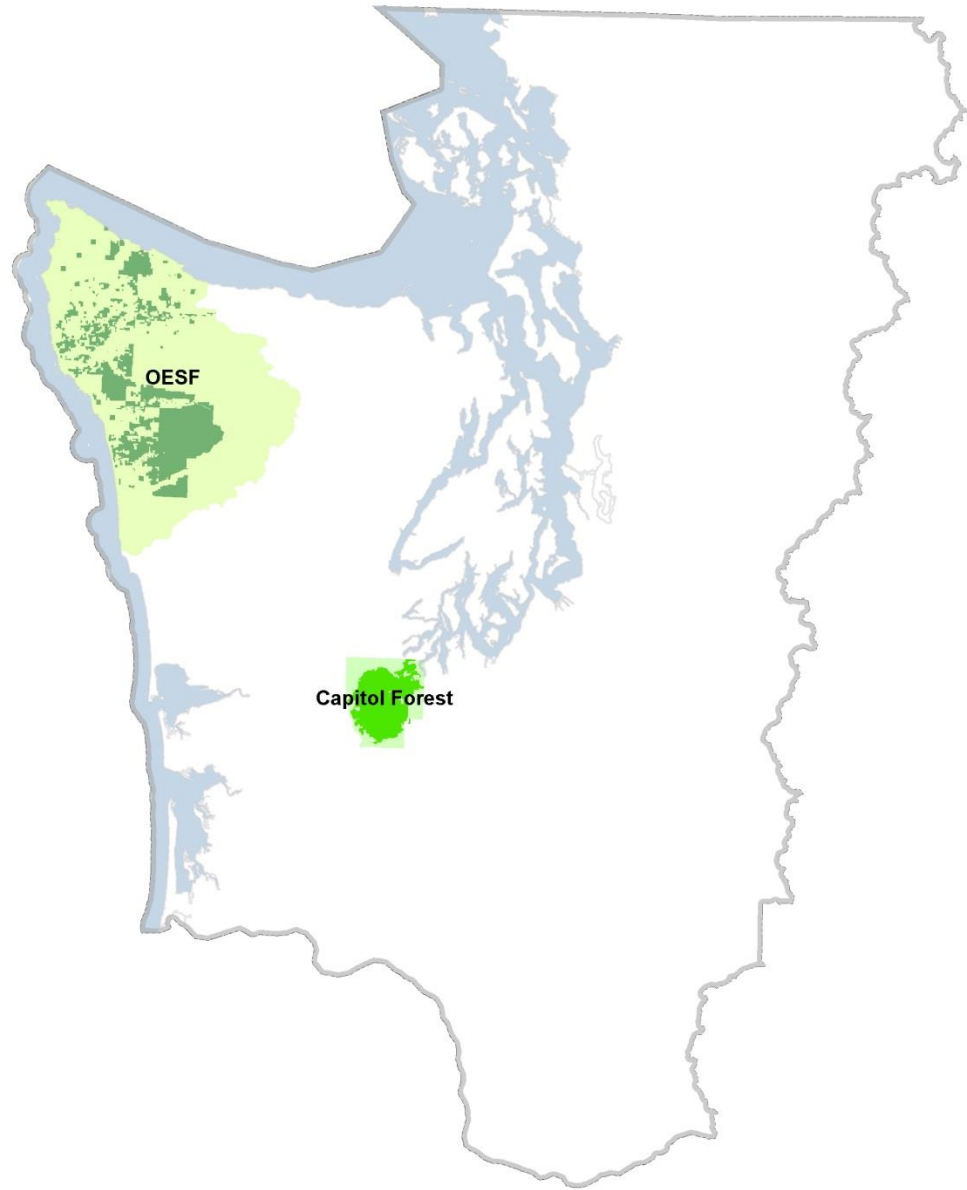




Policy for  
Sustainable  
Forests

Sustainable  
Harvest Units

# OESF & Capitol Forest



Policy for Sustainable Forests

Sustainable Harvest Units

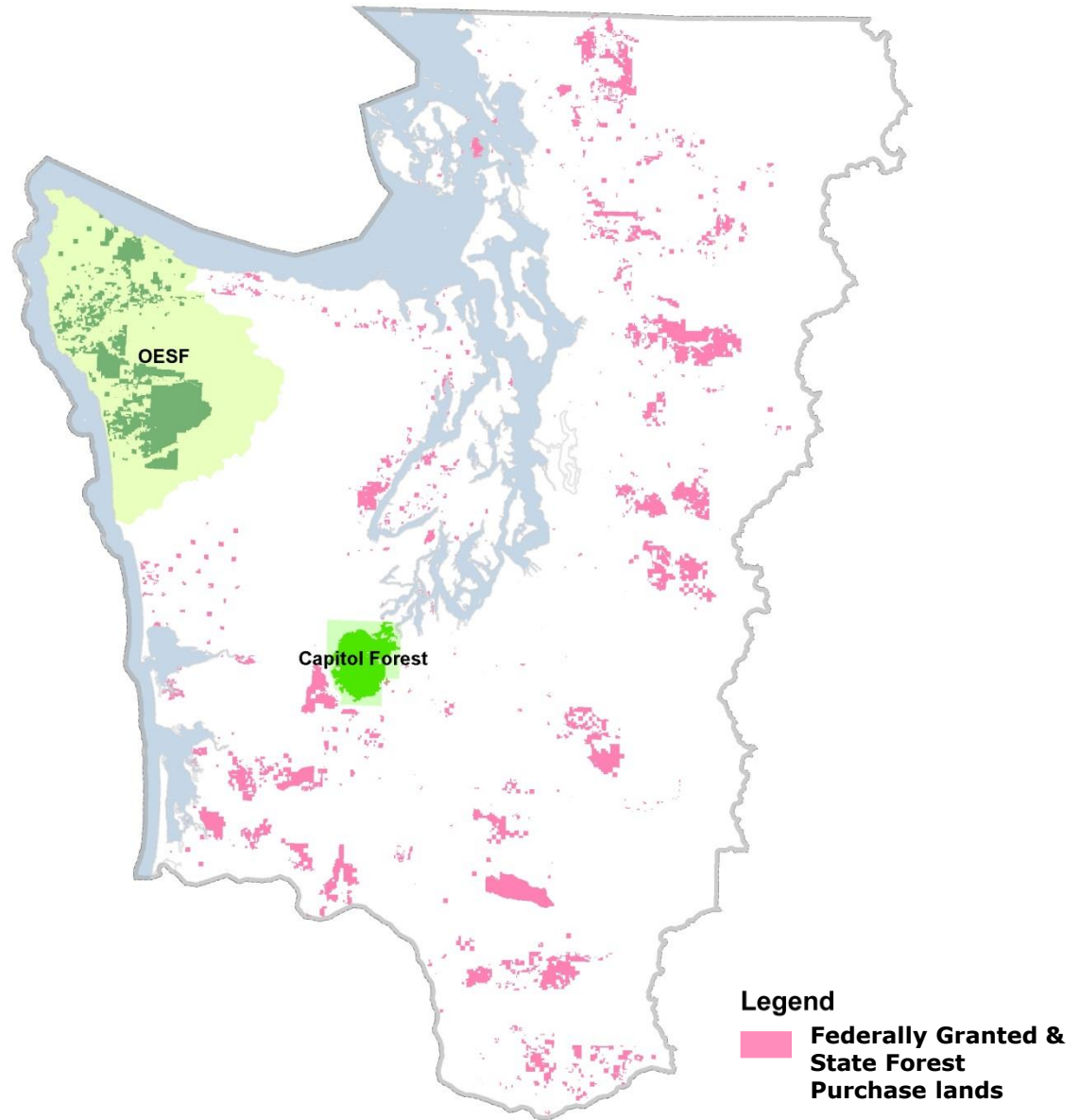
State Forest Transfer Units  
Individual Counties



Policy for  
Sustainable  
Forests

Sustainable  
Harvest Units

Federally  
Granted  
Trusts  
&  
State  
Forest  
Purchase  
as  
One  
Westside  
Unit

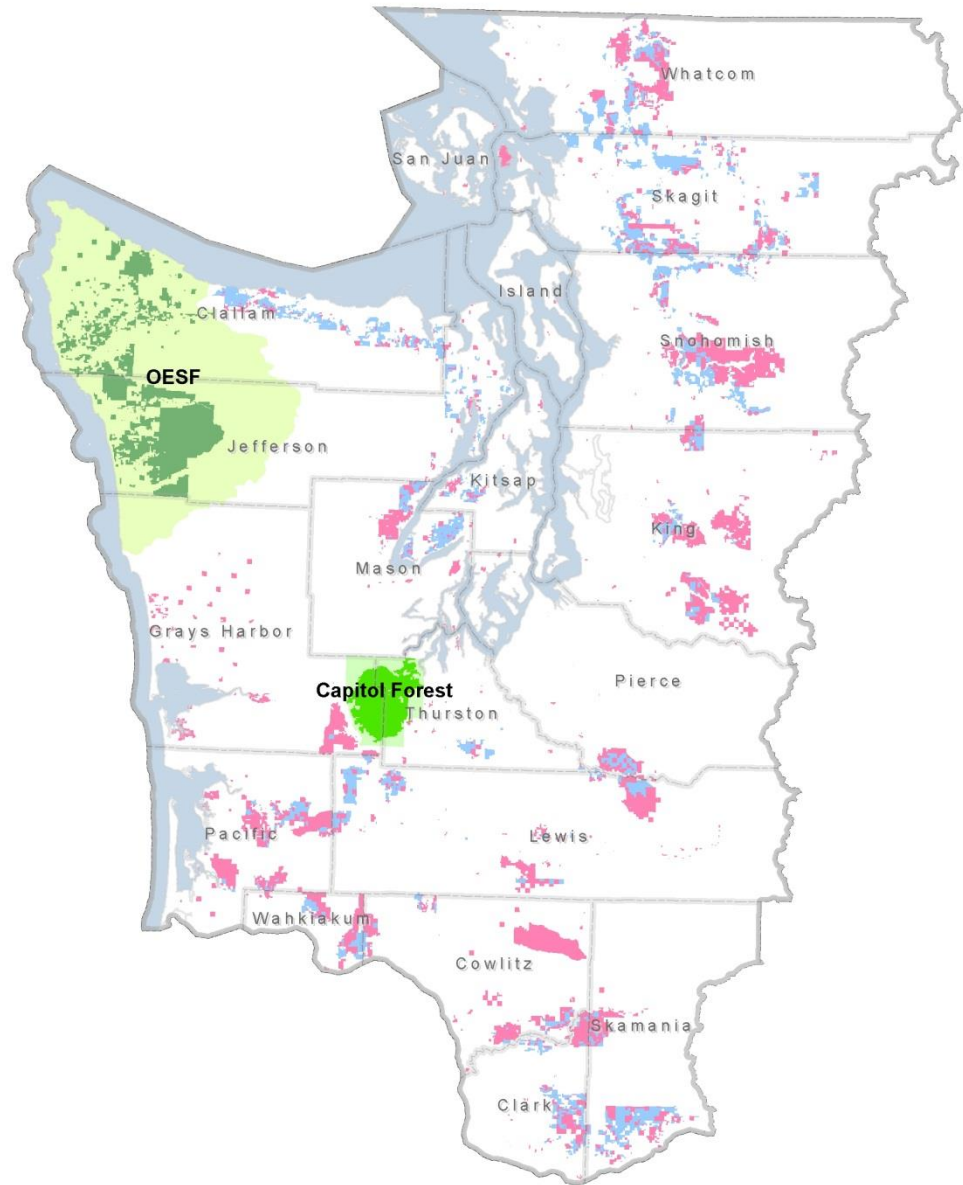


## Policy for Sustainable Forests

## Sustainable Harvest Units

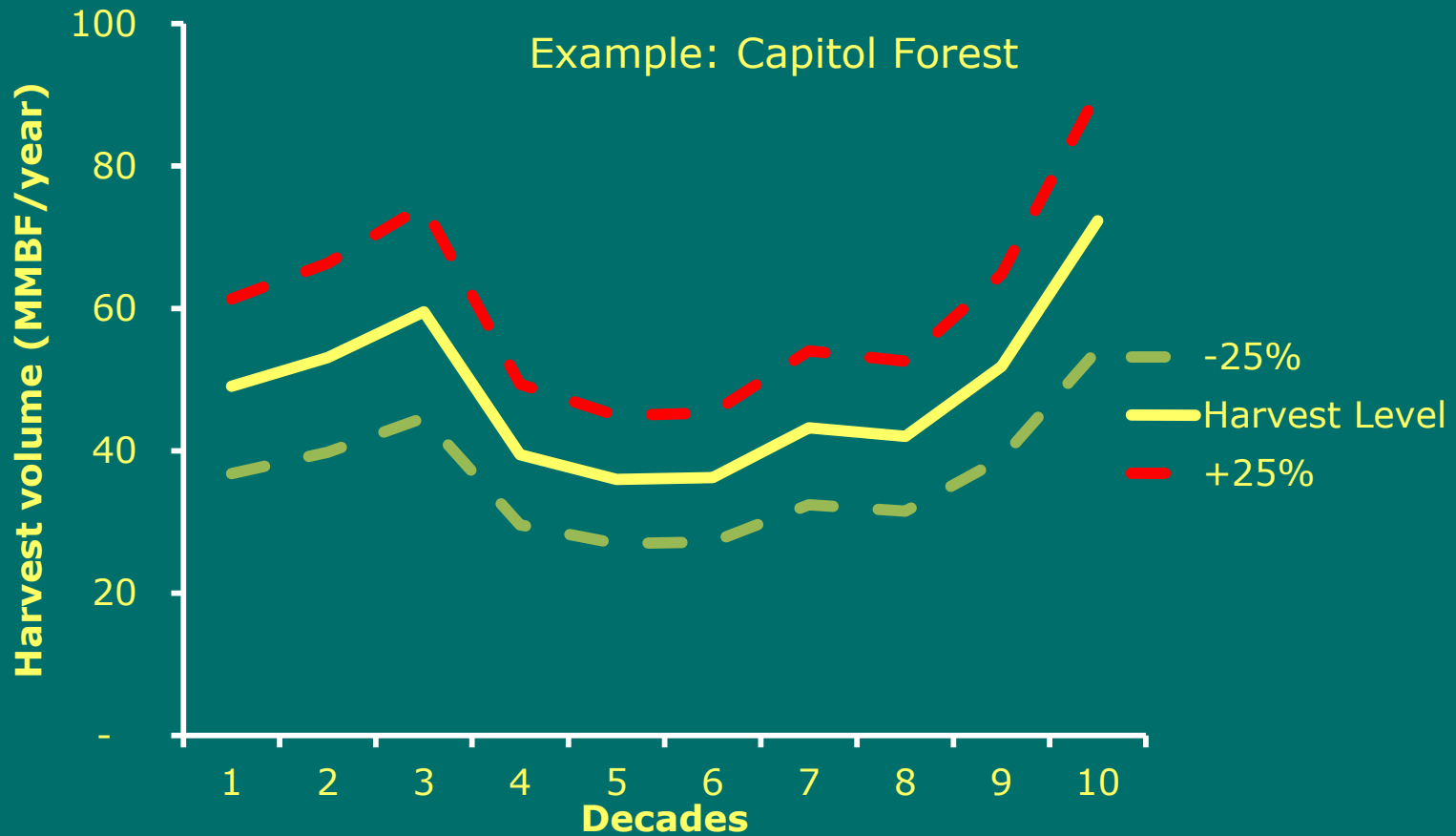
# 20 Sustainable Harvest Units

- OESF
- Capitol
- 17 Counties
- 1 Westside unit



# Policy for Sustainable Forests

## Harvest Flow Control – Inter-decadal



## Policy for Sustainable Forests

# Optimize economic value

- “The department will analyze the financial characteristics of forest stands in order to optimize the economic value of forest stands and timber production over time, in calculating the sustainable harvest level,....”

Policy on Definition of Sustainability  
for the Sustainable Harvest Calculation  
Policy for Sustainable Forest, 2006, page 29



# Review of 2004 and 2007 Sustainable Harvest Calculations



# 2004

## Sustainable Harvest Calculation

- Public Process
  - Scoping initiated February 22, 2002
  - 6 public meetings, plus 10 informal meeting with stakeholders
- Draft EIS
  - 7 public meetings/hearing December 2003
  - 330 public meeting participants, 410 written letters,
  - approximately 2,000 individual comments





2004

# Sustainable Harvest Calculation

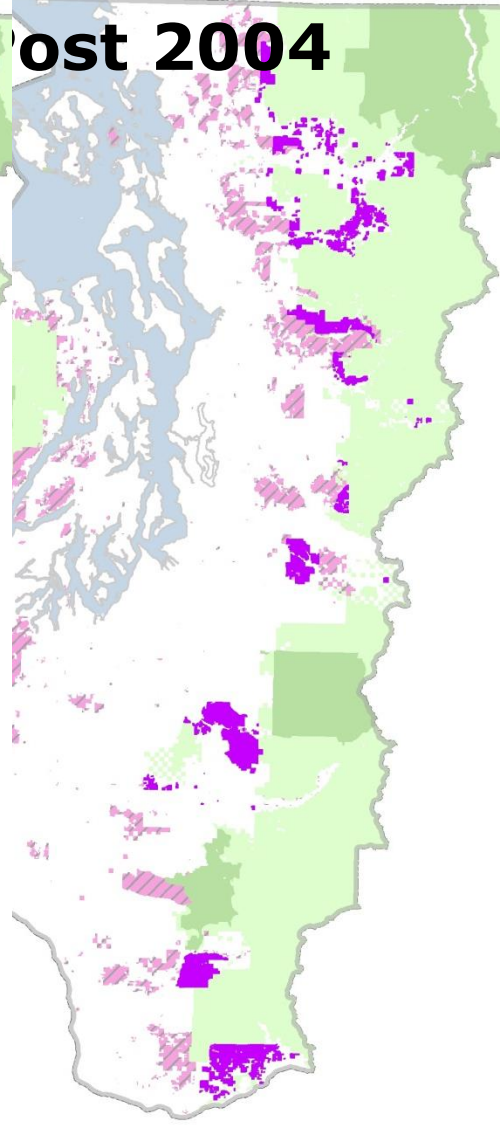
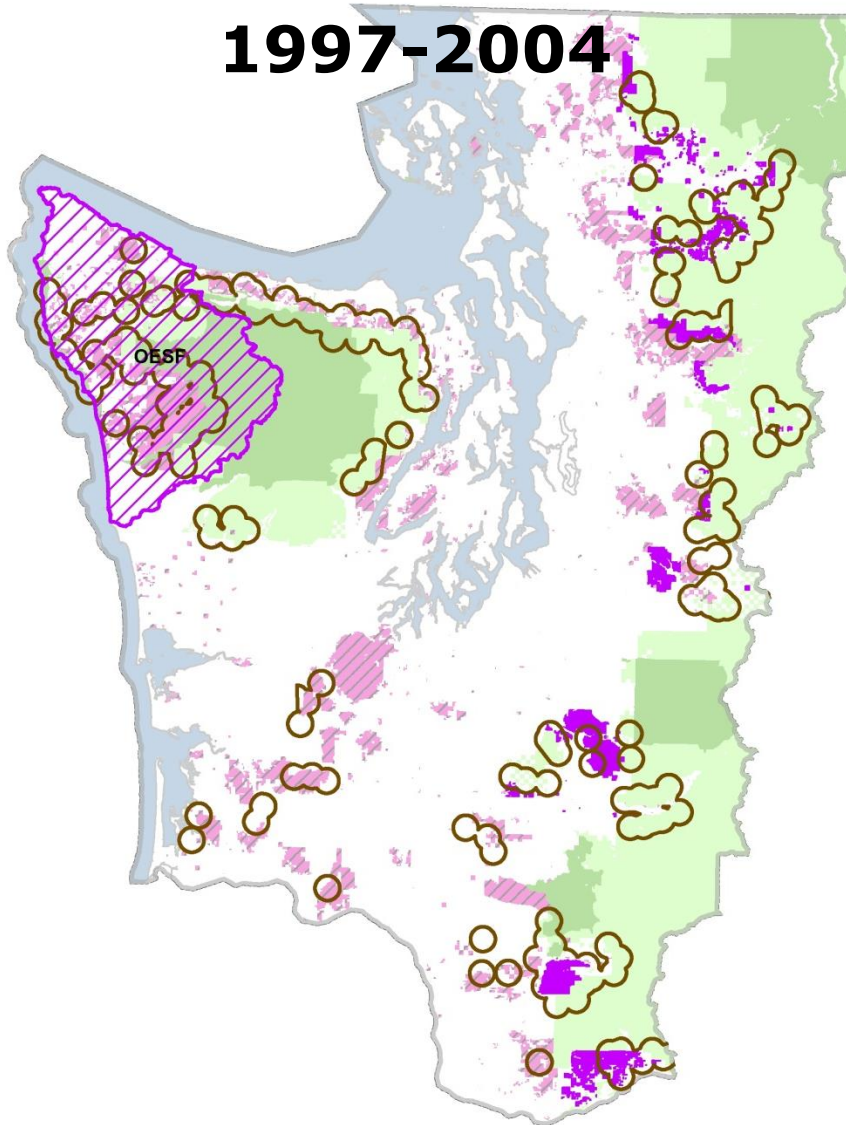
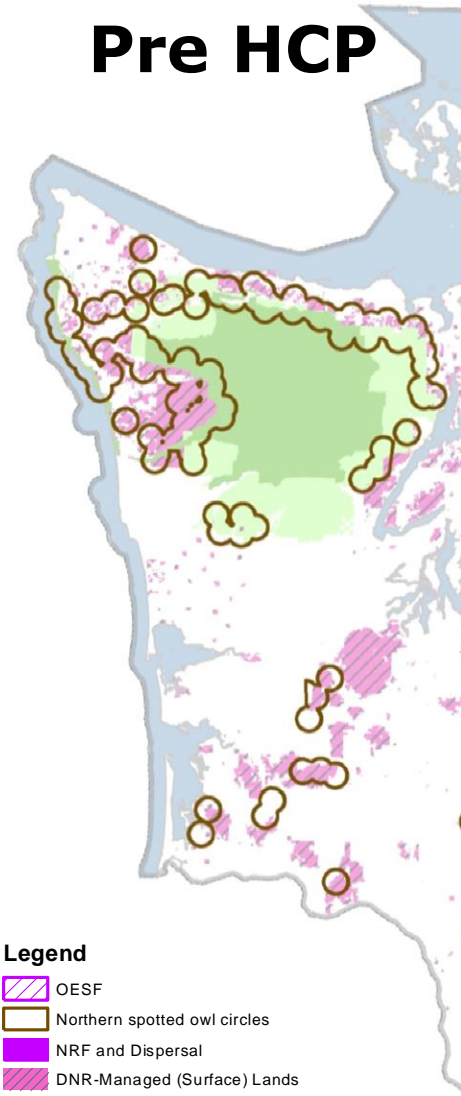
- Examined a number policies and procedures
  - Sustainable Harvest Units
  - Even flow
  - Harvest regulation
  - Rotation age
  - Northern Spotted Owl management
  - Old forest components







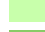

# Pre HCP

# 1997-2004

# Post 2004



### Legend

-  OESF
-  Northern spotted owl circles
-  NRF and Dispersal
-  DNR-Managed (Surface) Lands
-  US Forest Service
-  National Park Service



2004

# Sustainable Harvest Calculation

- Alternative 1
  - No Action
- Alternative 2
  - Habitat Conservation Plan Intent
- Alternative 3
  - Combined Ownerships
- Alternative 4
  - Passive Management Approach
- Alternative 5
  - Intensive Management Approach
- Alternative 6 (Preferred Alternative)
  - Innovative Silvicultural Management



2004

## Sustainable Harvest Calculation

- Lawsuit *WEC v Sutherland* argued that the SEPA process was inadequate as to impacts on the:
  - Alternatives analyzed
  - Northern spotted owl
  - Riparian management
  - Cumulative effects



2007

## Sustainable Harvest Adjustment

- By 2007, Department had:
  - Settled the *WEC v Sutherland* lawsuit
  - Approved Policy for Sustainable Forests
  - Implemented Riparian Forest Restoration Strategy for five Westside HCP planning units
- Outcomes
  - Harvest volume reduced from 597 to 550 MMBF



# Sustainable Harvest Calculation Timeline



# Timeline – Short Term

## Sustainable Harvest Calculation

### February

- Background presentation

### March/April

- In depth look at modeling assumptions

### May

- Harvest Volumes
- Environmental Analysis

### June

- Sustainable Harvest Recommendation Resolution



WASHINGTON STATE DEPARTMENT OF  
**Natural Resources**

---

**Peter Goldmark** - Commissioner of Public Lands