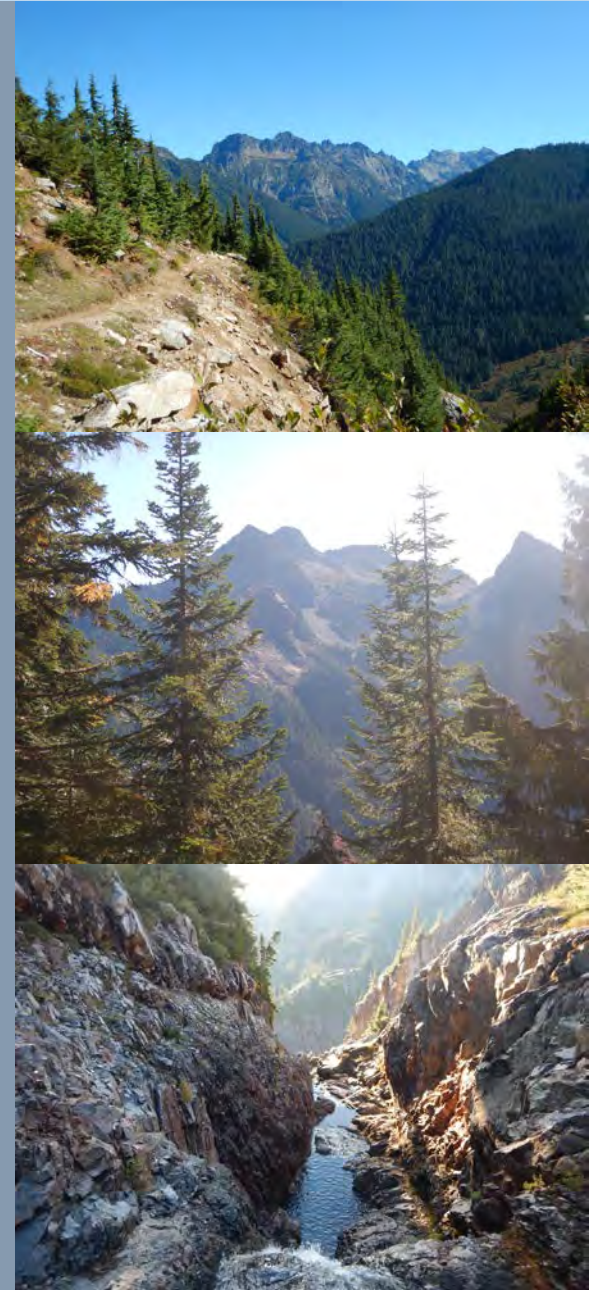




Morning Star Trails Planning

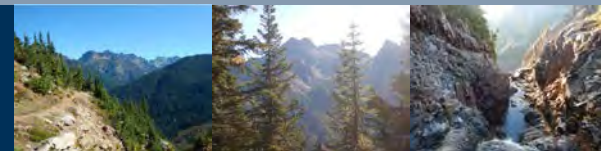
Natural Resources
Conservation Area



Washington State Department of Natural Resources

Public Land Manager for:

- 2.9 Million Acres of Upland Forest and Agricultural, Grazing, and Urban Lands
- 2.4 Million Acres of Aquatic Lands Navigable Bedlands, Tidelands, and Shorelands
- 158,000 Acres of Conservation Lands



Natural Areas Program Mission

Conserving Washington's native
species and ecosystems, today and
for future generations

High-Quality Ecosystems



Rare Plant Species



Rare Animal Species





Conservation Lands

- 92 Sites currently total more than 158,000 acres, which is about 2.5 percent of DNR-managed lands
- Two Conservation Categories:
 - Natural Area Preserves
 - Natural Resources Conservation Areas



Natural Resources Conservation Areas

- **Protect habitat for plant and animal species**
- **Offer opportunities for environmental education and research**
- **Include low-impact uses, such as hiking or wildlife viewing**

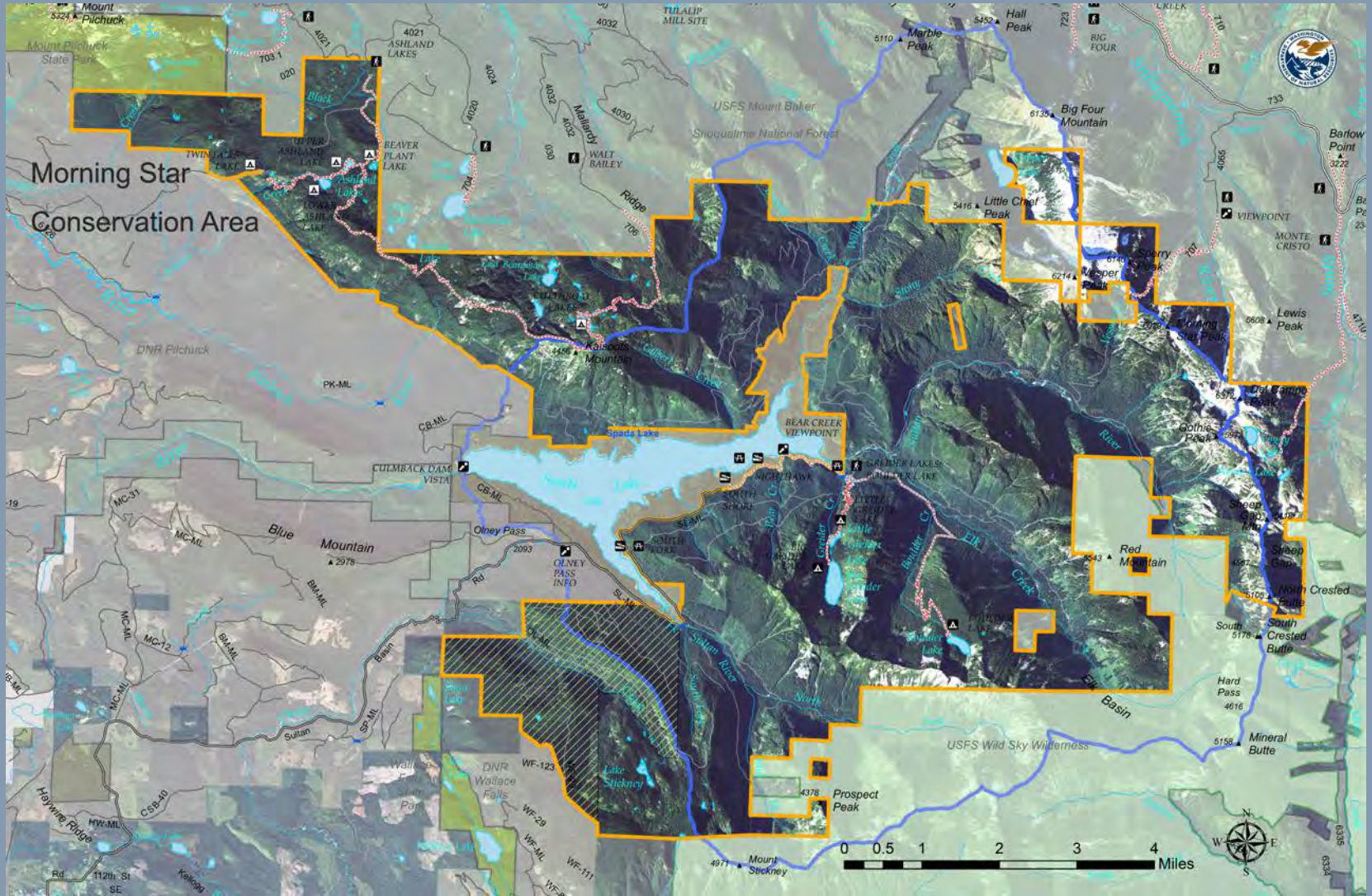


Natural Area Preserves

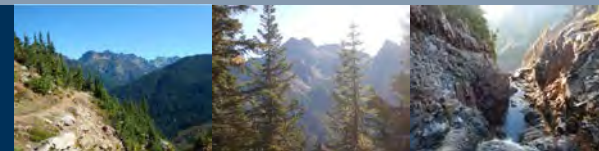
- Environmental Education
- Scientific research
- Genetic resource of native plants and animals
- Baseline/reference areas for managed lands
- Habitats for vanishing species
- Public access consistent with conservation management



Morning Star Natural Resources Conservation Area



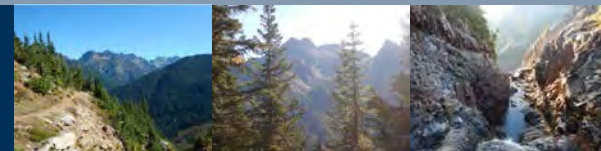
Morning Star Trails Planning



Morning Star Conservation Area



Morning Star Trails Planning



Morning Star Conservation Area



Morning Star Trails Planning



Morning Star Conservation Area



Morning Star Trails Planning



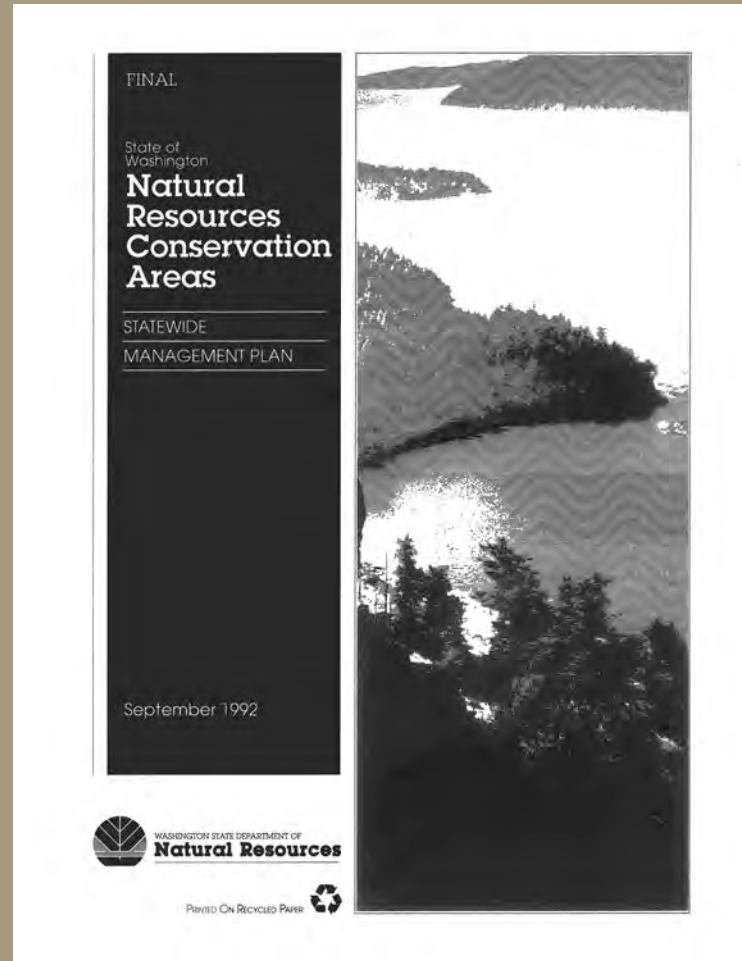
Morning Star Conservation Area



Morning Star Trails Planning



Natural Resources Conservation Areas Statewide Management Plan



Morning Star Trails Planning



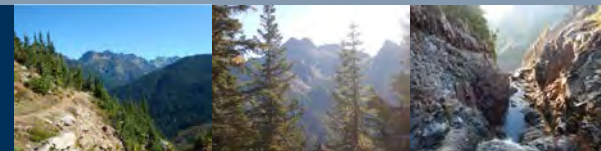
Morning Star Conservation Area



Morning Star Conservation Area



Morning Star Trails Planning



Morning Star Conservation Area



Morning Star Trails Planning



Morning Star Conservation Area



Morning Star Trails Planning



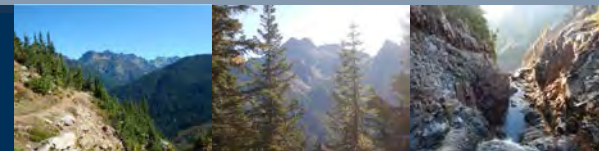
Morning Star Conservation Area



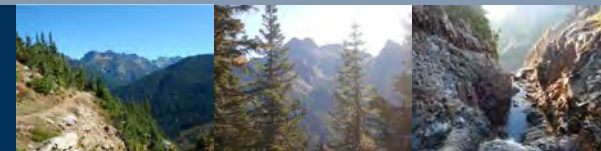
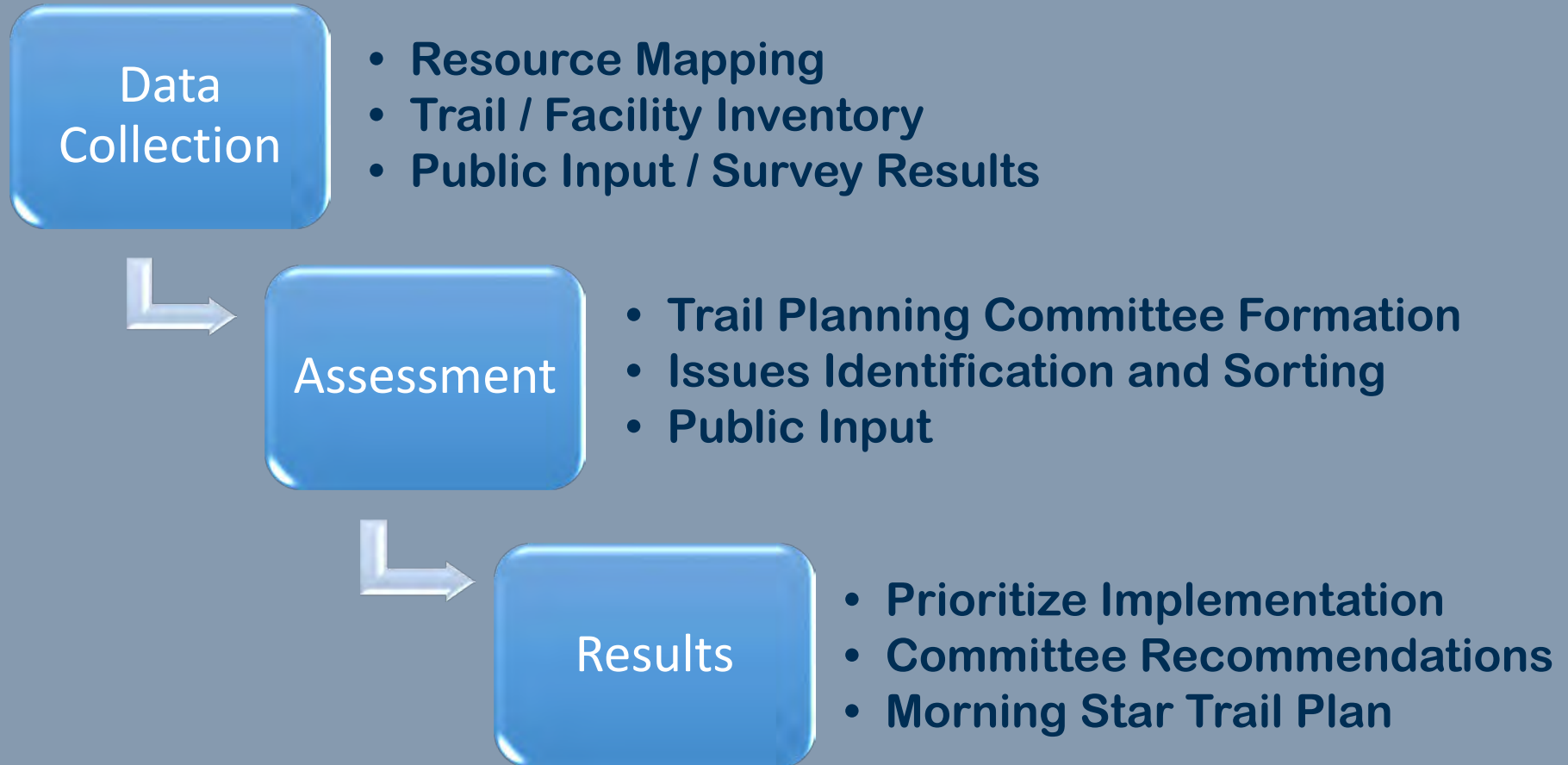
Morning Star Trails Planning



Morning Star Trails Planning



Morning Star Trails Planning Process



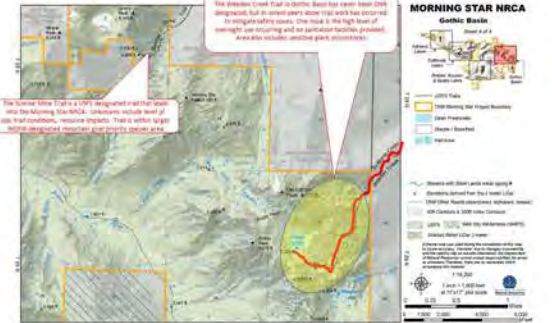
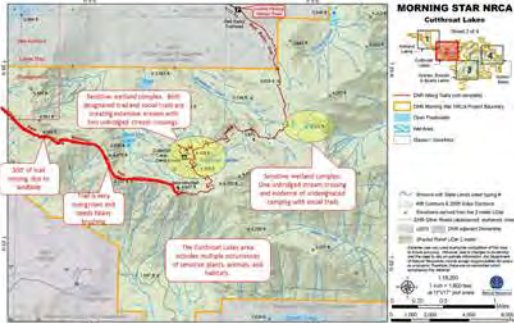
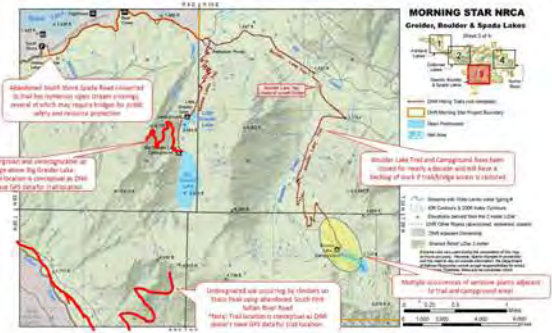
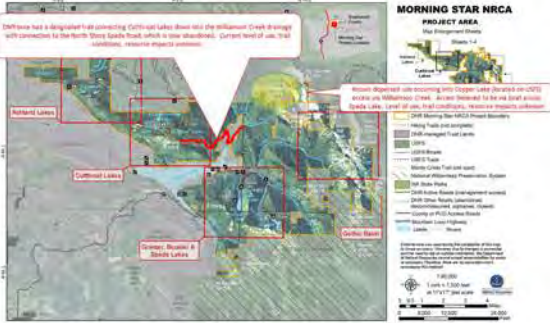
Data Collection



Morning Star Trails Planning



Data Collection



Morning Star NRCA Known Issues



Morning Star Trails Planning





Assessment and Results





Planning Committee

Morning Star Trail Planning Committee:

1. Apply for committee tonight, mail-in application, or submit it online by January 15th
2. Committee will meet once each month for about one year
3. Meetings will be held in Snohomish County

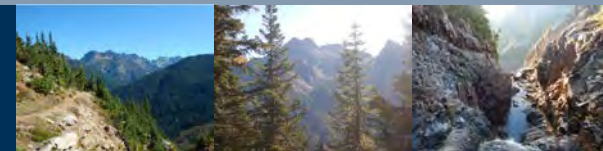
Committee will:

1. Analyze and assess data and input received
2. Recommend trail management priorities



Tonight's Meeting

- Station 1: Public sign-in and committee applications
- Station 2: Current and future recreation opportunities
- Station 3: What are your favorite recreation sites and why?
- Station 4: What are important issues and concerns to address?



Public Participation



Complete the online survey by January 15th

Visit webpage for more information and periodic updates

<http://www.dnr.wa.gov/MorningStarTrails>

Contact David Way at
360-333-5741 or
david.way@dnr.wa.gov

