



# NORTH MOUNTAIN BIKE TRAIL SYSTEM



WASHINGTON STATE DEPT OF  
**NATURAL  
RESOURCES**

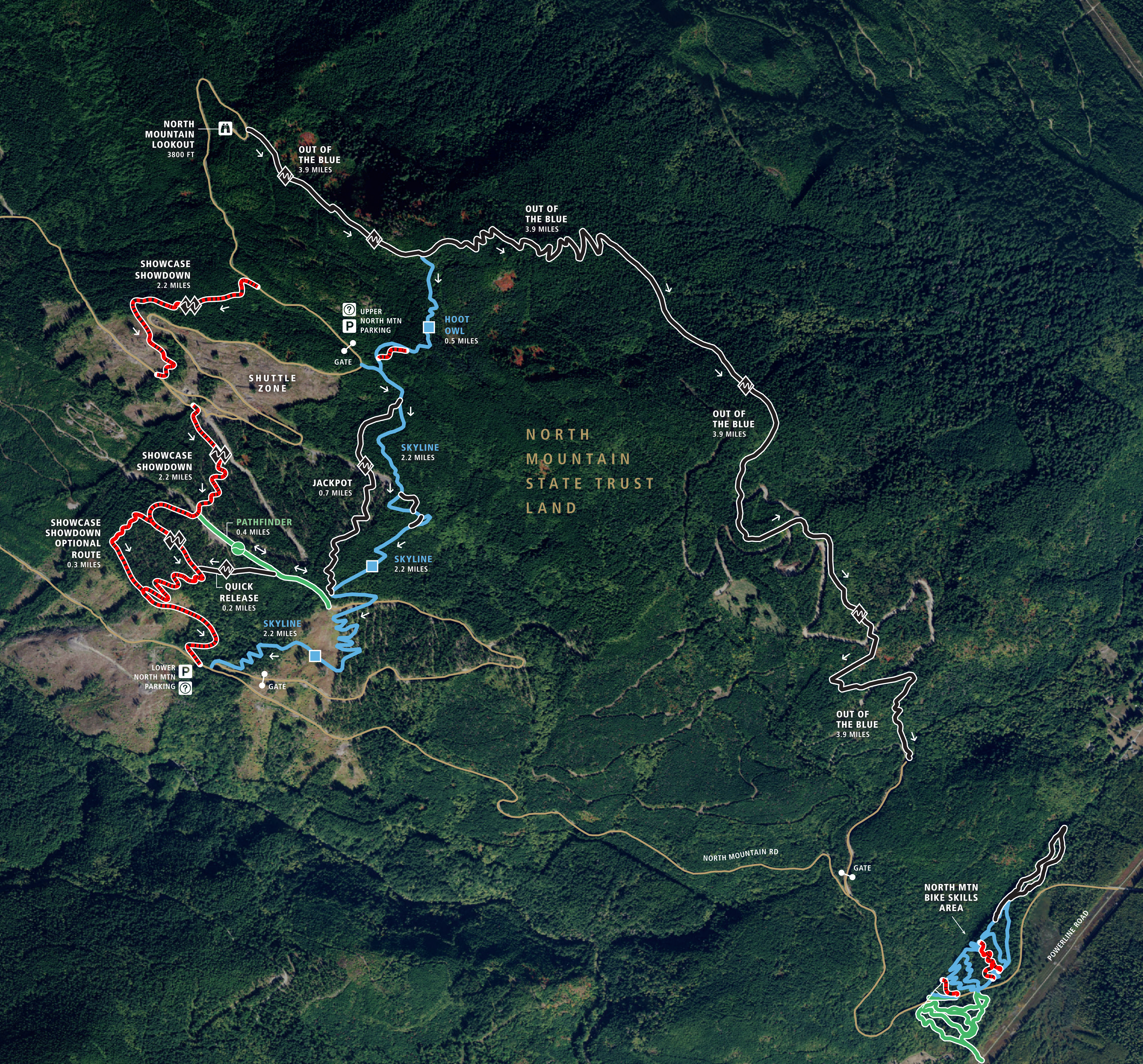
**“ THIS TRAIL SYSTEM IS A GREAT EXAMPLE OF HOW WE CONNECT PEOPLE WITH PUBLICLY OWNED FORESTLAND BY CREATING OPPORTUNITIES TO PLAY AND EXPLORE.”**

**HILARY S. FRANZ**  
COMMISSIONER OF PUBLIC LANDS

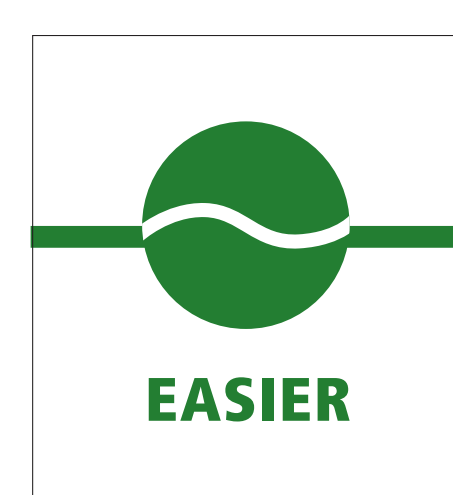


1/4 MILE  
400 M

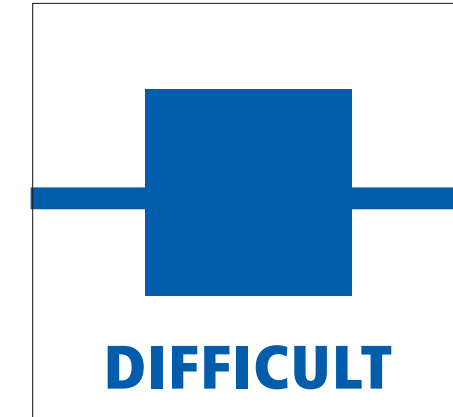
AERIAL MAP FOR ORIENTATION ONLY. NOT TO BE USED FOR TRAIL LENGTH CALCULATION.



## MOUNTAIN BIKE TRAIL DIFFICULTY LEGEND\*



**Typically gentler grades** with some obstacles, some of which may be unavoidable. Expect to encounter infrequent unavoidable technical features.



**Challenging terrain** with relatively moderate grades and variable trail surfaces. Expect to encounter some unavoidable larger obstacles and technical features.



**Very challenging terrain requiring advanced rider skills.** Expect to encounter steep grades with variable surfaces, including larger unavoidable mandatory advanced obstacles and technical features.



**Exceptionally challenging extreme terrain,** requiring expert riding skills. Expect to encounter very steep grades with highly variable trail surfaces, including severe unavoidable mandatory advanced obstacles and technical features.

## OTHER LEGEND

→ One-Way Mountain Bike Travel Direction

↔ Two-Way Mountain Bike Travel Direction

P Parking

🔍 Viewpoint

❓ Information

\*Trails with the same difficulty rating will not provide the exact same user experience. Each type of trail difficulty level rating has a range of challenge that users may experience.