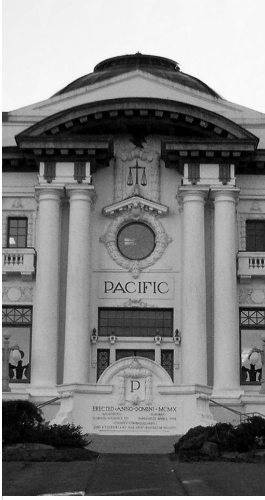


R  
E  
S  
O  
U  
R  
C  
E  
S

N  
A  
T  
U  
R  
A  
L



# Public Auction Sale of Timber

Book 991

.....

September 2018



WASHINGTON STATE DEPT OF  
**NATURAL  
RESOURCES**

# IMPORTANT NOTICES

## *Natural Resources (DNR)*

### **Governmental Regulatory Actions or Orders**

The purchaser assumes the risk of liabilities related to regulatory actions or orders by any government agency that may affect the operability of these timber sales. Such regulatory actions or orders include, but are not limited to, actions taken pursuant to the State Forest Practices Act, Chapter 76.09 RCW, and the Federal Endangered Species Act, 16 U.S.C. §§ 1531-1544. Please see timber sale contract clauses G-066 and G-220 for further information.

### **Threatened and Endangered Species**

DNR cannot verify the presence or absence of **any** threatened or endangered species that may affect the operability of the timber sale. Purchasers must rely on their own assessments.

### **Export Restricted**

All timber purchased under these state DNR contracts shall not be exported outside of the United States until the timber has been processed. Purchasers shall not violate any of the prohibitions in WAC 240-15-015 (relating to the prohibitions on export and substitution), WAC 240-15-025 (relating to reporting requirements), and WAC 240-15-030 (relating to enforcement). If purchasers knowingly violate WAC 240-15-015, purchasers shall be barred from bidding on or purchasing export restricted timber as provided.

### **Cover photos**

Timber Sales in this book are from state trust lands, managed to help build K-12 public schools, state universities, colleges, prisons, mental hospitals, the state Capitol; and to support local services in many counties.

**Top left:** State Forest Lands are managed to provide revenue to the counties in which they are located such as the Pacific County Courthouse in South Bend, Washington. Northwest Bridge Company of Portland, Oregon completed construction of the courthouse building in June of 1911. One unusual feature of the historic building is an "art glass dome" that crowns the structure. The courthouse is listed on the National Register of Historic Places.  
**Photo:** DNR/Tom Heller

**Bottom left:** Grade school students learn from high school students in the North Mason School District during Students in the Watershed day in the Tahuya State Forest trust lands. **Photo:** DNR/Staff

**Right:** Landscape view of DNR managed trust lands in western Washington. **Photo:** DNR/Staff

## Table of Contents

Certification Opportunities for DNR Timber Purchasers	Page 3
Bidder/Purchaser Auction and Bidding Information	Page 5
Summary of All Sales Being Offered in September	Page 11
Stude	Page 13
Penny Alderwood VRH WMZ	Page 19
Spitfire	Page 27
Kristine	Page 33
Sealed Bid Form and Instructions	Page 41
Statewide Bid Bond and Instructions	Page 43
Timber Sale per Sale Bid Bond and Instructions	Page 47
Log Sort Sealed Bid Form and Instructions	Page 51





## **Certification Opportunities for DNR Timber Purchasers**

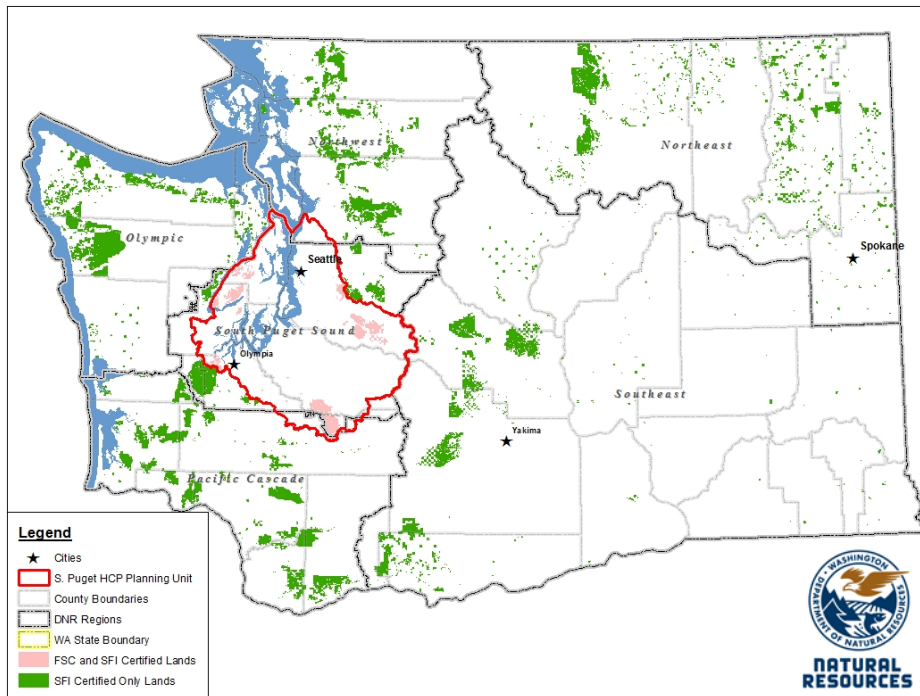
Certified forests are grown to an approved set of standards which demonstrate environmentally responsible, socially beneficial, and economically viable management practices that promote responsible forestry. This unique commitment to responsible forestry recognizes that forest landowners play a critical role in ensuring the long-term health and sustainability of our forests.

Forest Stewardship Council® (FSC®) is an independent, non-profit organization that promotes responsible management of the world's working forests through the development of forest management standards, a voluntary certification system, and trademarks that provide recognition and value to products bearing the FSC label in the marketplace. FSC standards ensure forestry is practiced in an environmentally responsible, socially beneficial, and economically viable way.

Sustainable Forestry Initiative Inc. is an independent, non-profit organization internationally endorsed and accepted around the world. The Sustainable Forestry Initiative® (SFI) program is based on the premise that responsible environmental behavior and sound business decisions can coexist. Its three-chamber Board of Directors governs all aspects of the SFI® program, with equal representation from the environmental, economic, and social sectors.

Currently, all Department of Natural Resources (DNR)-managed forested state trust lands in Washington State are certified under the SFI program Standard. Lands within DNR's South Puget Habitat Conservation Plan Planning Unit, located within parts of King, Pierce, Thurston, Lewis, Kitsap, and Mason counties, are dually certified under both the FSC-US Forest Management Standard and the SFI program Standard.

Certification under each standard involves an inspection audit of the landowner's forest management activities by an independent, accredited third-party to verify that it meets specified forest management principles. If the forest unit complies with the specific standard, the landowner receives a certificate of conformance ensuring that responsible forestry is being practiced. Both standards encourage integration of perpetual growing and harvesting of trees with strong measures to protect wildlife, plants, soil, water, and air quality. Both standards provide a seal of approval that forests certified under these principles are well-managed. The global marketplace recognizes and endorses multiple forest certification standards. Each standard has individual market niches. By being dually certified, DNR can maximize its customer base and provide choices to the consumer.



DNR's FSC certificate number is: BV-FM/COC-080501

DNR's SFI certificate number is: BV-SFIS-US09000572

DNR-managed forested state trust lands within the South Puget Habitat Conservation Plan Planning Unit (located within parts of King, Pierce, Thurston, Lewis, Kitsap, and Mason counties) are certified as being in compliance with the Forest Stewardship Council Pacific Coast Regional Standard.

To learn more about chain of custody and demonstrating that your timber is derived from a responsibly managed forest and/or to learn more about becoming a participant in the FSC Program, visit <https://us.fsc.org/>.

To learn more about DNR timber sales certified under the FSC Standard, visit [www.dnr.wa.gov](http://www.dnr.wa.gov).

FSC A.C. owns all right, title, and interest in and to the Forest Stewardship Council trademarks.

All DNR-managed forested state trust lands across the state have been certified as being in compliance with the Sustainable Forestry Initiative program Standard.

To learn more about chain of custody and demonstrating that your timber is derived from a responsibly managed forest and/or to learn more about becoming a participant in the SFI program, visit [www.sfiprogram.org](http://www.sfiprogram.org).

To learn more about DNR timber sales certified under the SFI program Standard, visit [www.dnr.wa.gov](http://www.dnr.wa.gov).

SFI Marks are registered marks owned by Sustainable Forestry Initiative Inc.

**To learn more about certification on DNR-managed forested state trust lands, visit**

[http://www.dnr.wa.gov/BusinessPermits/Topics/TimberSaleAuction/Pages/lm\\_forest\\_certification.aspx](http://www.dnr.wa.gov/BusinessPermits/Topics/TimberSaleAuction/Pages/lm_forest_certification.aspx) or contact:

**Product Sales & Leasing Division, Product Sales Section:**

Tom Shay, Assistant Division Manager, 360-902-1561, [thomas.shay@dnr.wa.gov](mailto:thomas.shay@dnr.wa.gov)  
 Steve Teitzel, Operations, 360-902-1741, [steve.teitzel@dnr.wa.gov](mailto:steve.teitzel@dnr.wa.gov)

**Forest Resources Division, HCP and Scientific Consultation Section:**

Allen Estep, Assistant Division Manager, 360-902-2898, [allen.estep@dnr.wa.gov](mailto:allen.estep@dnr.wa.gov)  
 Douglas Kennedy, Forest Certification Program Lead, 360-902-1283, [douglas.kennedy@dnr.wa.gov](mailto:douglas.kennedy@dnr.wa.gov)

# Washington State Department of Natural Resources (DNR)

## **Bidder's/Purchaser's Inspection of Sale Area and Forest Products**

Acreage estimates and volume estimates contained within each timber notice of sale and each timber sale contract are made only for administrative and identification purposes. Except as expressly provided by the timber sale contract, the purchaser shall be responsible for paying the entire purchase price, even if the actual acreage or timber volume varies from the estimated quantity or volume shown.

All prospective bidders have the opportunity and are expected to inspect the sale area and the forest products located thereon. Bidders shall not rely on any representations by the State including, but not limited to, acreage estimates, volume estimates, appraisal or pre-bid documentation. The successful bidder/purchaser will further warrant that they have entered the timber sale contract without any reliance upon the DNR's volume estimates, acreage estimates, appraisals, pre-bid documentation, or any other representation by the DNR.

*Any timber sale contract arising out of these public auctions will require the successful purchaser to warrant that they are entering the timber sale contract based solely upon their own judgment of the value of the forest products, formed after their own examination and inspection of both the timber sale area and the forest products being sold.*

## **Exclusion and Disclaimer of Warranties**

The PARTIES AGREE that the IMPLIED WARRANTIES OF MERCHANTABILITY AND FITNESS FOR A PARTICULAR PURPOSE, and ALL OTHER WARRANTIES EXPRESS OR IMPLIED, ARE EXCLUDED from this transaction, and shall not apply to the goods sold. For example, THE FOLLOWING SPECIFIC MATTERS ARE NOT WARRANTED, and are EXCLUDED from this transaction:

- a. ***The merchantability of the forest products.*** The use of the term "merchantable" in any document is not intended to vary the foregoing.
- b. ***The condition of the forest products.*** All forest products will be conveyed "AS IS."
- c. ***The acreage contained within any sale area.*** Any acreage descriptions appearing in the timber notices of sale, timber sale contract, timber sale map or other documents are estimates only, provided solely for administrative and identification purposes.
- d. ***The volume, quality, or grade of the forest products.*** The descriptions of the forest products to be conveyed are estimates only, made solely for administrative and identification purposes.
- e. ***The correctness of any soil or surface conditions, presale construction appraisals, investigations, and all other pre-bid documents prepared by or for the State.*** These documents have been prepared for the State's appraisal purposes only.
- f. ***That the sale area is free from threatened or endangered species, or their habitat.*** The State is not responsible for any interferences with forestry operations that result from the presence of any

threatened or endangered species, or the presence of their habitat, within the sale area.

g. *That the forestry operations to be performed under this contract will be free from regulatory actions by governmental agencies.* The State is not responsible for actions to enforce regulatory laws, such as the Washington Forest Practices Act (Chapter 76.09 RCW), taken by the Department of Natural Resources or any other agency that may affect the operability of these timber sales.

h. Items contained in any other documents prepared for or by the State.

Please also see timber sale contract clause G-060 for further information.

## **BIDDING PROCEDURES FOR TIMBER AUCTIONS**

*The general requirements that follow are a part of all Timber Notices of Sale to be auctioned by the Department of Natural Resources (DNR).*

### **General Information**

*The State reserves the right to waive minor irregularities and the right to reject any or all bids.*

- A. This book contains the timber notices of sale and maps for each timber sale scheduled to be auctioned. More specific information can be obtained by contacting the appropriate region office at the number listed on the back cover of this book.
- B. The timber notice of sale is a summary of sale information. For more specific information, interested parties are encouraged to view the Appraisal Packets on the DNR Internet Site @ [www.dnr.wa.gov](http://www.dnr.wa.gov), this will take you directly to the Product Sales Section. The Appraisal Packets contain **DRAFT** copies of the timber notice of sale, map, contract, road plan, cruise data, precruise and cruise narrative, Forest Practices Application (FPA).
- C. The sale preview packets may be obtained at no charge for individual sales by visiting the appropriate region office.
- D. Timber sale contracts contain extensive terms and conditions that will be binding upon successful high bidders. Each bidder should carefully review all terms contained in the appropriate **DRAFT** timber sale contract prior to bidding on a sale, and should review the final contract prior to signing. **DRAFT** timber sale contracts are contained in the preview and presales packets and are available upon request at the respective region office.
- E. Sales advertised in this book have not been approved by the Board of Natural Resources and are subject to the Board's approval before they will be sold. The Board meets and approves sales approximately six weeks prior to auction. All sales are subject to confirmation by the DNR under RCW 79.15.120.
- F. The State does not guarantee the accuracy of any information contained herein pertaining to particular sales. Therefore, all prospective purchasers are expected to make their own independent inspections and appraisals prior to bidding.
- G. If any conflict exists between the information in the Timber Notice of Sale, timber sale map,



sale preview packets and that in the timber sale contract, the **signed contract will prevail**.

H. Purchasers must pay the Forest Excise Tax on the bid price, permanent road construction costs, and other considerations. The tax rate is 5% without the EARR credit and 4.2% with the credit. For more information contact the Department of Revenue, Forest Tax Section at 1-800-548-8829.

I. **Within 30 days of sale confirmation, the apparent high bidder will provide to the State the Performance Security** specified on each Notice of Sale. **The successful bidder also agrees to return a signed contract to the State within 30 days of confirmation.** Failure to provide a signed contract to the state within 30 days of confirmation may result in a loss of bidder's rights to the products sold and forfeiture of initial deposit moneys.

J. Each DNR region office has information about sales offered in that region. For further information, contact the respective DNR region office. Region office addresses and telephone numbers appear on the back cover of this booklet.

K. The purchaser assumes the responsibility for any costs associated with extra maintenance or repair levied by a county for any county road used by the purchaser.

## **Bidding Process**

A. All timber will be auctioned using the sealed bid method.

B. Bids submitted on day of auction must be in the bid box at the specified auction location before 10:00 a.m. The respective DNR region office must receive mailed bids by 4:30 p.m., on the last business day before the auction. Bidders assume all risk for the method of delivery.

C. The DNR has the right to reject bid forms that are completed incorrectly. *All bid forms must have an original signature on behalf of the person or entity submitting the bid, and must be on the form provided in this booklet or a photocopy thereof. Revised documents are not permissible.* Bidding instructions are on the back of the Sealed Bid Form. A bid deposit must be included in the sealed bid envelope unless using a Timber Sale Statewide Bid Bond.

D. All bids must include the completed Sealed Bid Form and bid deposit.

E. Bids will be opened in each respective region in the order in which sales appear in the Public Auction Sale of Timber book (alphabetically by county and by agreement number). Sales added after the book is printed will be inserted to retain this order. Sort sales may be auctioned out of this sequence at the State's convpignce.

F. If a tie bid occurs, the names of the tie bidders will be placed in a hat and the successful bidder will be determined by a drawing.

G. For sales offered on a stumpage basis, the apparent high bidder on a particular sale will have the option of withdrawing additional sealed bids submitted for any remaining stumpage sales to be auctioned. The apparent high bidder must exercise this option within two minutes after the apparent high bidder is announced. **This option is not available for sales offered on a delivered basis.**

## **Auction Time and Location**

Auctions will start at 10:00 a.m. and close at 4:00 p.m. on the date and at the location specified in each Timber Notice of Sale.

## **Bid Deposits**

- A. Required bid deposits are listed on each Timber Notice of Sale.
- B. Bid deposits must be in the form of cash, certified check, cashiers' check, money order or bid bond.
- C. Bid bonds may be either a Timber Sale Statewide Bid Bond or a Timber Sale Per Sale Bid Bond.
- D. All bid deposits shall be submitted by the person or entity submitting the bid and made payable to the Department of Natural Resources. **Third party deposits will not be accepted.**

## **Timber Sale Per Sale Bid Bonds**

- A. The Per Sale Bid Bond shall guarantee payment of the bid deposit **within ten days of auction.**
- B. The balance between the bid bond and the Initial Deposit payment is due **by 4:30 p.m., on the day of auction.**
- C. Additional forms and instructions for a Per Sale Bid Bond are available at any DNR region office.

## **Timber Sale Statewide Bid Bond**

- A. Statewide Bid Bonds shall guarantee payment of the Initial Deposit on any statewide timber sale while the bond is in effect.
- B. The Statewide Bid Bond must be received by the Department of Natural Resources, Product Sales and Leasing Division, P.O. Box 47014, Olympia, Washington, 98504-7014, ten days in advance of the auction date. The bond shall be in the amount of \$150,000.00.
- C. Successful bidders using a Statewide Bid Bond must pay the total Initial Deposit payment (10% of the total bid price) **by 4:30 p.m., on the day of the auction.**
- D. A Statewide Bid Bond cannot be used to secure the Initial Deposit payment due the day of auction.
- E. Additional forms and instructions for a statewide bid bond are available at any DNR region office.

## **Payments**

The initial deposit for a sale is 10% of the total bid value as submitted by the apparent high bidder (25% if the bidder is a defaulter as defined under WAC 332-140-300) and never less than \$5,000.00 for lump sum sales. For Lump Sum sales appraised at less than \$5,000.00, the entire bid value is due on day of auction.

- A. Apparent high bidders using cash, certified check, cashiers' check or money order as a bid deposit must pay the total Initial Deposit amount by 4:30 p.m. on auction day.
- B. Apparent high bidders using a Timber Sale Per Sale Bid Bond as a bid deposit must pay the difference between the bid deposit and the total initial deposit by 4:30 p.m., on the day of auction. The bid bond amount must be replaced with a certified check, cashiers' check, bank draft, cash, money order, or wire transfer within ten days of the auction.
- C. Apparent high bidders using a Timber Sale Statewide Bid Bond must pay the entire Initial Deposit amount by 4:30 p.m. on the day of auction.

## **Fees due on the day of sale must be paid by 4:30 p.m.**

All payments must be in the form of a certified check, cashiers' check, bank draft, cash, money order or wire transfer.

## **Eligibility to Bid**

In order to bid on State timber sales you must be:

- 18 years of age (or have a co-signer who meets the eligibility requirements)
- Licensed to do business in the State of Washington
- Eligible to bid on Export Restricted timber
- Authorized to submit bids

## **Authorized Representatives**

Company officers or company authorized representatives may bid on State sales, sign State documents, or sign checks. A list of authorized representatives and their specific authorities must be submitted, in writing, to the Department of Natural Resources, Product Sales and Leasing Division, P.O. Box 47014, Olympia, Washington, 98504-7014, ten days in advance of the auction. A company owner or officer must sign this submittal.



**Summary Report of All Sales for the Month of September 2018**

---

**Board Sales**

<u>County</u>	<u>Region</u>	<u>Agree #</u>	<u>FSC®</u>	<u>Sale Name</u>	<u>Volume</u>	<u>Value</u>
Cowlitz	Pacific Cascade	96933		STUDE	3,886	\$1,494,000.00
Jefferson	Olympic	96664		PENNY ALDERWOOD VRH WMZ	5,076	\$1,691,000.00
Lewis	South Puget	94839	*	SPITFIRE	4,831	\$1,714,000.00
Mason	South Puget	95703	*	KRISTINE	3,770	\$1,372,000.00
				<b>Total</b>	===== 17,563	===== \$6,271,000.00



*Scan with your smartphone or tablet to go  
to the September 2018 timber auction page*





TIMBER NOTICE OF SALE

SALE NAME: STUDE

AGREEMENT NO: 30-96933

AUCTION: September 27, 2018 starting at 10:00 a.m., COUNTY: Cowlitz
Pacific Cascade Region Office, Castle Rock, WA

SALE LOCATION: Sale located approximately 12 miles east of Woodland

PRODUCTS SOLD AND SALE AREA: All timber, except leave trees bound by yellow "Leave Tree Area" tags, leave trees marked with blue paint, and snags bound by the following; white "Timber Sale Boundary" tags, pink flagging, the PH-4100 road and reprod in Unit 1; white "Timber Sale Boundary" tags, pink flagging, the PH-5100A road and reprod in Unit 2; white "Timber Sale Boundary" tags, pink flagging, and reprod in Unit 3; white "Timber Sale Boundary" tags, pink flagging, the PH-4901 road and power lines in Unit 4. on part(s) of Sections 28 and 33 all in Township 6 North, Range 2 East, W.M., containing 103 acres, more or less.

CERTIFICATION: This sale is certified under the Sustainable Forestry Initiative® program Standard (cert no: BV-SFIS-US09000572)

ESTIMATED SALE VOLUMES AND QUALITY:

Table with columns: Species, Avg DBH, Ring Count, Total MBF, and MBF by Grade (1P, 2P, 3P, SM, 1S, 2S, 3S, 4S, UT). Rows include Douglas fir, Hemlock, Red alder, Maple, and Sale Total.

MINIMUM BID: \$1,494,000.00 BID METHOD: Sealed Bids

PERFORMANCE SECURITY: \$100,000.00 SALE TYPE: Lump Sum

EXPIRATION DATE: October 31, 2020 ALLOCATION: Export Restricted

BID DEPOSIT: \$149,400.00 or Bid Bond. Said deposit shall constitute an opening bid at the appraised price.

HARVEST METHOD: Ground based equipment and Cable. Harvesting activities are estimated to be 60% ground-based harvesting and 40% cable/cable assist . Ground-based harvesting equipment shall be restricted to slopes of 40% and less, and restricted during saturated soil conditions. See clauses H-140 and H-141 for further harvest requirements. A detailed felling and yarding plan shall be required prior to any harvest activities and approved in writing by the Contract Administrator. Leave trees marked with yellow paint may be cut for safety reasons but will remain on site. Ground Based Yarding will not be permitted from October 1 to May 1 unless authorized in writing by the Contract Administrator.

ROADS: 16.89 stations of required construction. 17.73 stations of required reconstruction. 23.05 stations of optional construction. 30.87 stations of optional reconstruction. 51.17



## TIMBER NOTICE OF SALE

stations of required pre-haul maintenance. 18.11 stations of heavy abandonment. 8.69 stations of light abandonment. Rock for construction, reconstruction, and pre-haul maintenance under this contract may be obtained at no cost to the Purchaser from the following rock sources; the Marble Pit located in Section 20, Township 06 North, Range 02 East, WM. Road construction will not be permitted from October 1 to April 30 unless authorized in writing by the Contract Administrator. All road work will not be permitted from October 1 to June 30 on the PH-4901 and the PH-4902 unless authorized in writing by the Contract Administrator. The hauling of forest products will not be permitted from October 1 to June 30 unless authorized in writing by the Contract Administrator. The hauling of forest products will not be permitted from October 1 to June 30 on the PH-4901 and the PH-4902 unless authorized in writing by the Contract Administrator.

### **ACREAGE DETERMINATION**

**CRUISE METHOD:** The sale acres were determined by GPS delineation. Cruise was completed using variable plot cruise methods.

**FEES:** Fee of \$1,040.91 to PacifiCorp for the timber bound by orange "Right-of-Way" boundary tags in Unit 5. The fee is due within 10 days of day of sale. Fee of \$1,000.00 to the State for the Road Use Permit between PacifiCorp and the State dated 6/7/2108. The fee is due within 30 days of day of sale. \$69,000.00 is due on day of sale. \$9.00 per MBF is due upon removal. These are in addition to the bid price.

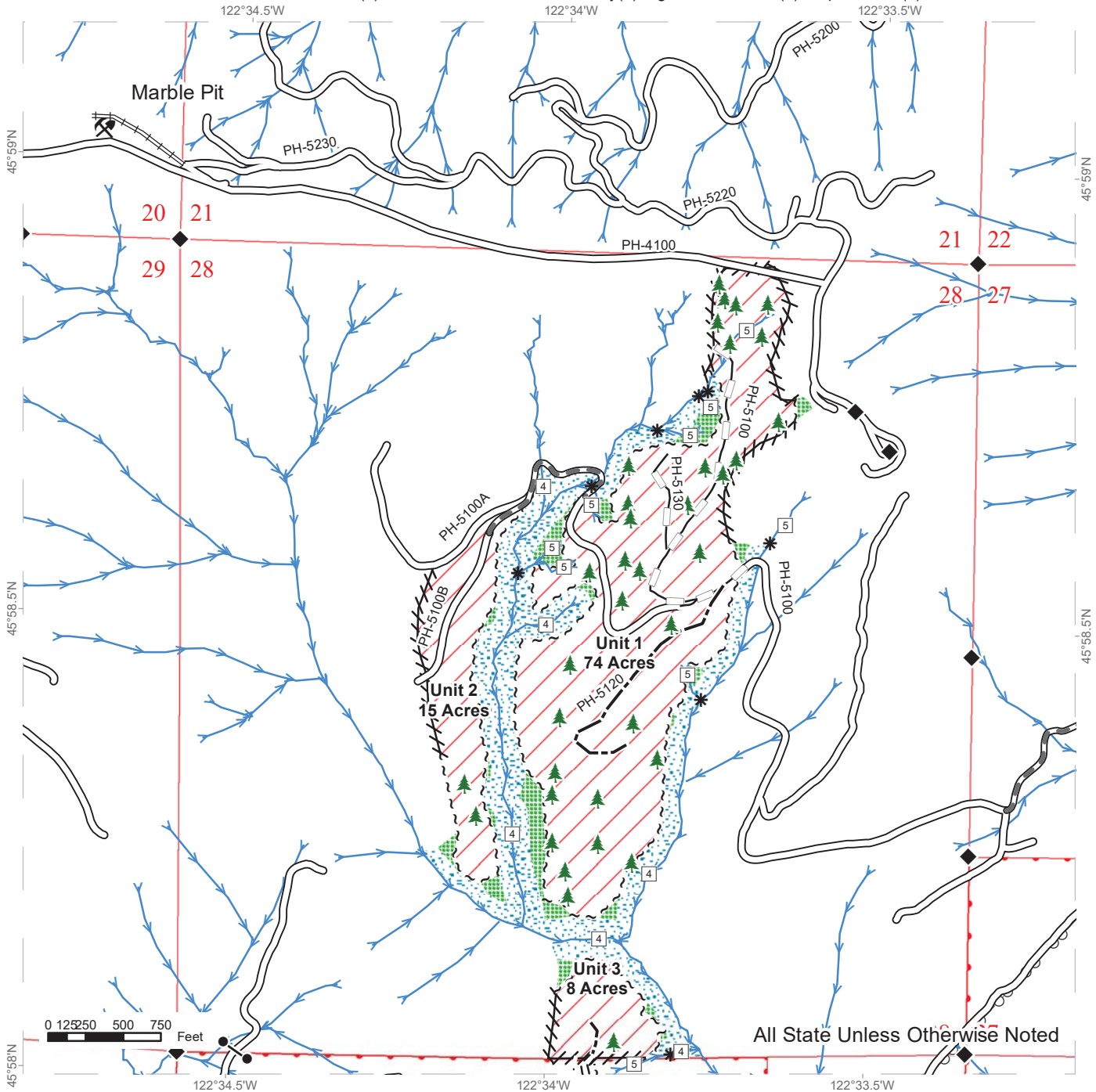
**SPECIAL REMARKS:** This sale has approximately 1,261 MBF of high quality 2 saw DF, 275 MBF of high quality 3 saw DF, 124 MBF of DF SM, 51 MBF of high quality 2 saw WH, and 18 MBF of high quality 3 saw WH, see cruise for details. See driving map for gate locations. PCP 1-1 gate keys may be obtained from the Pacific Cascade Region office.



# TIMBER SALE MAP

**SALE NAME:** STUDE  
**AGREEMENT #:** 30-096933  
**TOWNSHIP(S):** T06R02E  
**TRUST(S):** State Forest Purchase(2), Common School and Indemnity(3), Agricultural School(4), Capitol Grant(7)

**REGION:** Pacific Cascade Region  
**COUNTY(S):** COWLITZ  
**ELEVATION RGE:** 785-2078



All State Unless Otherwise Noted

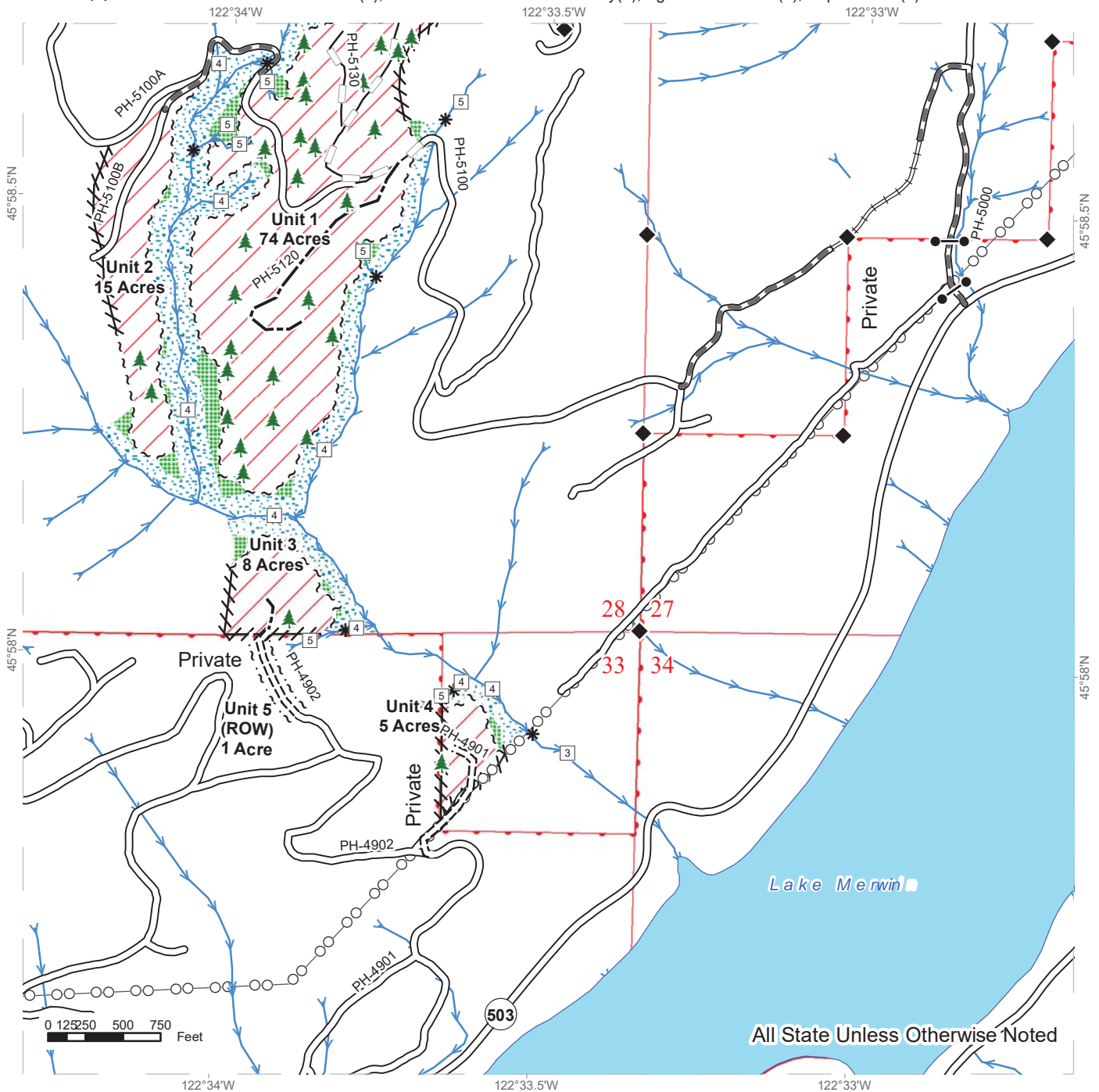
Variable Retention Harvest	Existing Roads	Streams
Leave Tree Area	Required Pre-Haul Maintenance	Stream Type
Riparian Mgt Zone	Required Construction	Stream Type Break
Sale Boundary Tags	Required Reconstruction	Survey Monument
Leave Tree Tags	Optional Construction	Leave Tree Area
Right of Way Tags	Optional Reconstruction	Rock Pit
Flag Line		
Power Line		



# TIMBER SALE MAP

**SALE NAME:** STUDE  
**AGREEMENT #:** 30-096933  
**TOWNSHIP(S):** T06R02E  
**TRUST(S):** State Forest Purchase(2), Common School and Indemnity(3), Agricultural School(4), Capitol Grant(7)

**REGION:** Pacific Cascade Region  
**COUNTY(S):** COWLITZ  
**ELEVATION RGE:** 785-2078



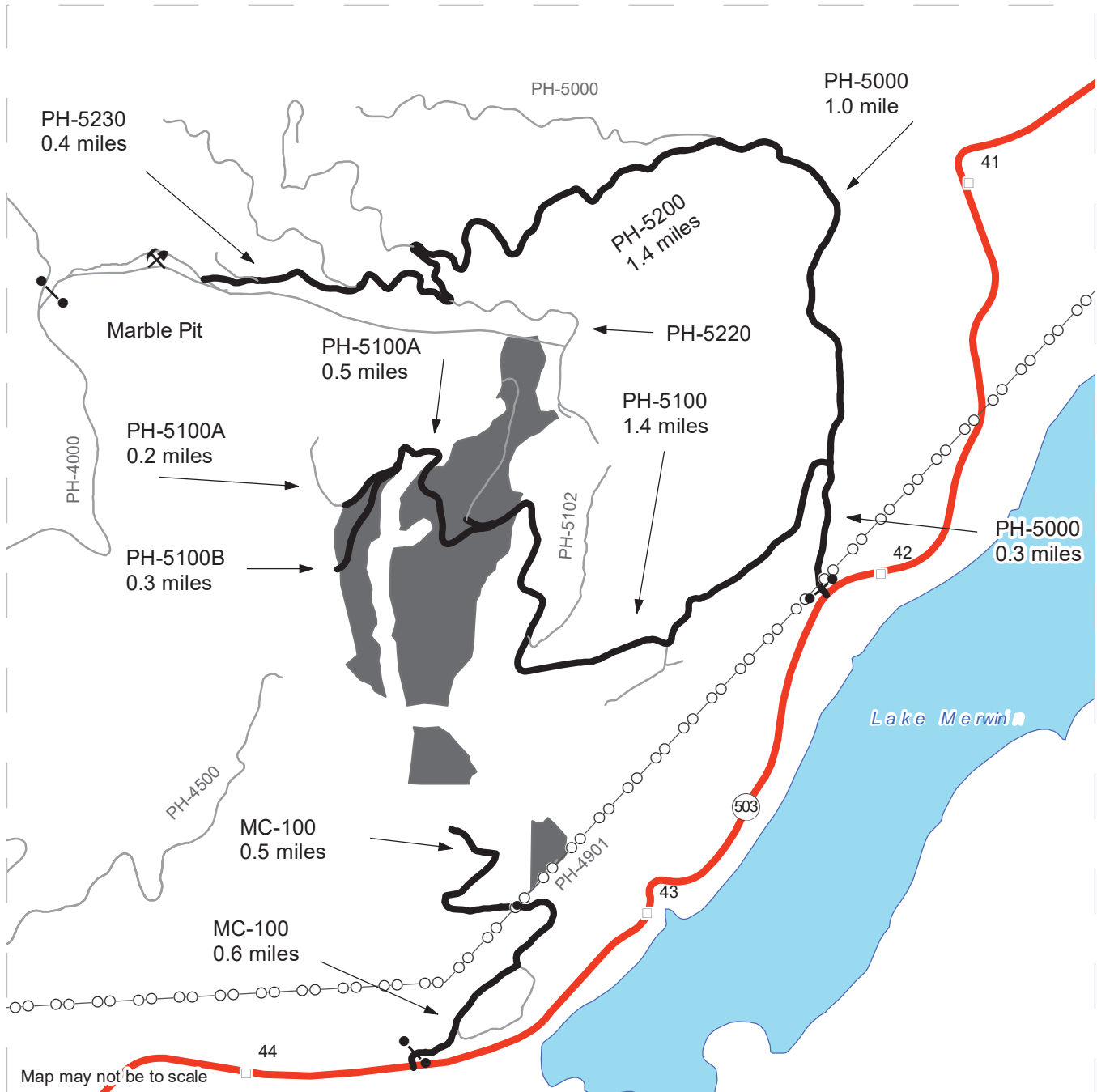
All State Unless Otherwise Noted

Variable Retention Harvest	Existing Roads	Streams
Leave Tree Area	Required Pre-Haul Maintenance	Stream Type
Riparian Mgt Zone	Required Construction	Stream Type Break
Sale Boundary Tags	Required Reconstruction	Survey Monument
Leave Tree Tags	Optional Construction	Gate (PCP 1-1)
Right of Way Tags	Optional Reconstruction	Leave Tree Area
Flag Line		
Power Line		

# DRIVING MAP

**SALE NAME:** STUDE  
**AGREEMENT#:** 30-096933  
**TOWNSHIP(S):** T06R02E  
**TRUST(S):** State Forest Purchase(2), Common School and Indemnity(3), Agricultural School(4), Capitol Grant(7)

**REGION:** Pacific Cascade Region  
**COUNTY(S):** COWLITZ  
**ELEVATION RGE:** 785-2078



- Timber Sale Unit
- Haul Route
- Other Road
- Milepost Markers
- Highway
- Distance Indicator
- Gate (PCP1-1)
- Rock Pit
- Power Lines

**Driving Directions**

From State Route 503 (milepost 42) turn left (north) onto the PH-5000 and follow for 0.3 miles. Turn left (west) onto the PH-5100 for 1.4 miles and arrive at Unit 1. The PH-5100 turns into the PH-5100A. Continue for another 0.5 miles for Unit 2.

From State Route 503 (milepost 44) turn left (north) onto the MC-100 for Units 3 & 4. Continue for 0.6 miles until the PH-4901. Turn right and arrive at Unit 4. Continue on the MC-100 for 0.5 miles and then walk into Unit 3.

To access Marble Pit continue on the PH-5000 from the PH-5100 junction for another mile and turn left onto the PH-5200. Continue for 1.4 miles and stay on the PH-5230 for 0.4 miles and arrive at the pit.







TIMBER NOTICE OF SALE

SALE NAME: PENNY ALDERWOOD VRH WMZ

AGREEMENT NO: 30-96664

AUCTION: September 26, 2018 starting at 10:00 a.m., Olympic Region Office, Forks, WA

COUNTY: Jefferson

SALE LOCATION: Sale located approximately 4 miles Quilcene

PRODUCTS SOLD AND SALE AREA:

All timber except, trees marked with a band of blue paint or bounded out by leave tree area tags, downed red cedar(unless it has fine branches and needles), or timber that has been on the ground for 5 years or more ( five years is defined by more than 1.5 inches of sap rot) bounded by the following; timber sale boundary tags and timber type change in Unit 1; timber sale boundary tags, special management unit boundary tags and timber type change in Unit 2; timber sale boundary tags, timber type change and the PT-Q-2000 road in Unit 3; timber sale boundary tags in Unit 4. All timber marked with orange paint, bounded by timber sale boundary tags, special management unit boundary tags and timber type change in Unit 5 ; located on part(s) of Sections 4 and 22 all in Township 27 North, Range 2 West, Sections 33, 34 and 36 all in Township 28 North, Range 2 West, W.M., containing 246 acres, more or less.

CERTIFICATION: This sale is certified under the Sustainable Forestry Initiative® program Standard (cert no: BV-SFIS-US09000572)

ESTIMATED SALE VOLUMES AND QUALITY:

Table with columns: Species, Avg DBH, Ring Count, Total MBF, and MBF by Grade (1P, 2P, 3P, SM, 1S, 2S, 3S, 4S, UT). Rows include Douglas fir, Hemlock, Red alder, Maple, Grand fir, Red cedar, and Sale Total.

MINIMUM BID: \$1,691,000.00

BID METHOD: Sealed Bids

PERFORMANCE SECURITY: \$100,000.00

SALE TYPE: Lump Sum

EXPIRATION DATE: October 31, 2021

ALLOCATION: Export Restricted

BID DEPOSIT: \$169,100.00 or Bid Bond. Said deposit shall constitute an opening bid at the appraised price.

HARVEST METHOD: Ground Based methods 100%. Use of tracked or rubber tired skidders is restricted on slopes over 40%. Yarding will not be permitted from November 1 to May 31 with tracked or rubber tired skidders unless authorized in writing by the Contract Administrator



## TIMBER NOTICE OF SALE

---

**ROADS:** 25.26 stations of required construction. 8.50 stations of optional construction. 19.30 stations of optional reconstruction. 225.30 stations of required maintenance. 7.0 stations of required decommissioning. Road construction, maintenance, reconstruction, timber haul and rock haul will not be permitted from November 1 to April 30 unless authorized in writing by the Contract Administrator.

### ACREAGE DETERMINATION

**CRUISE METHOD:** Sale units were cruised using variable plot sample.

**FEES:** Within seven days of auction, Purchaser must provide the DNR with a cashier's check made payable to the City of Port Townsend in the amount of \$2,463.00 for a Road Use Permit. \$93,756.00 is due on day of sale. \$9.00 per MBF is due upon removal. These are in addition to the bid price.

**SPECIAL REMARKS:** There is a locked gate on the PT-Q-2200, contact the Olympic Region office at 360-374-2800 for an AA-1 key.

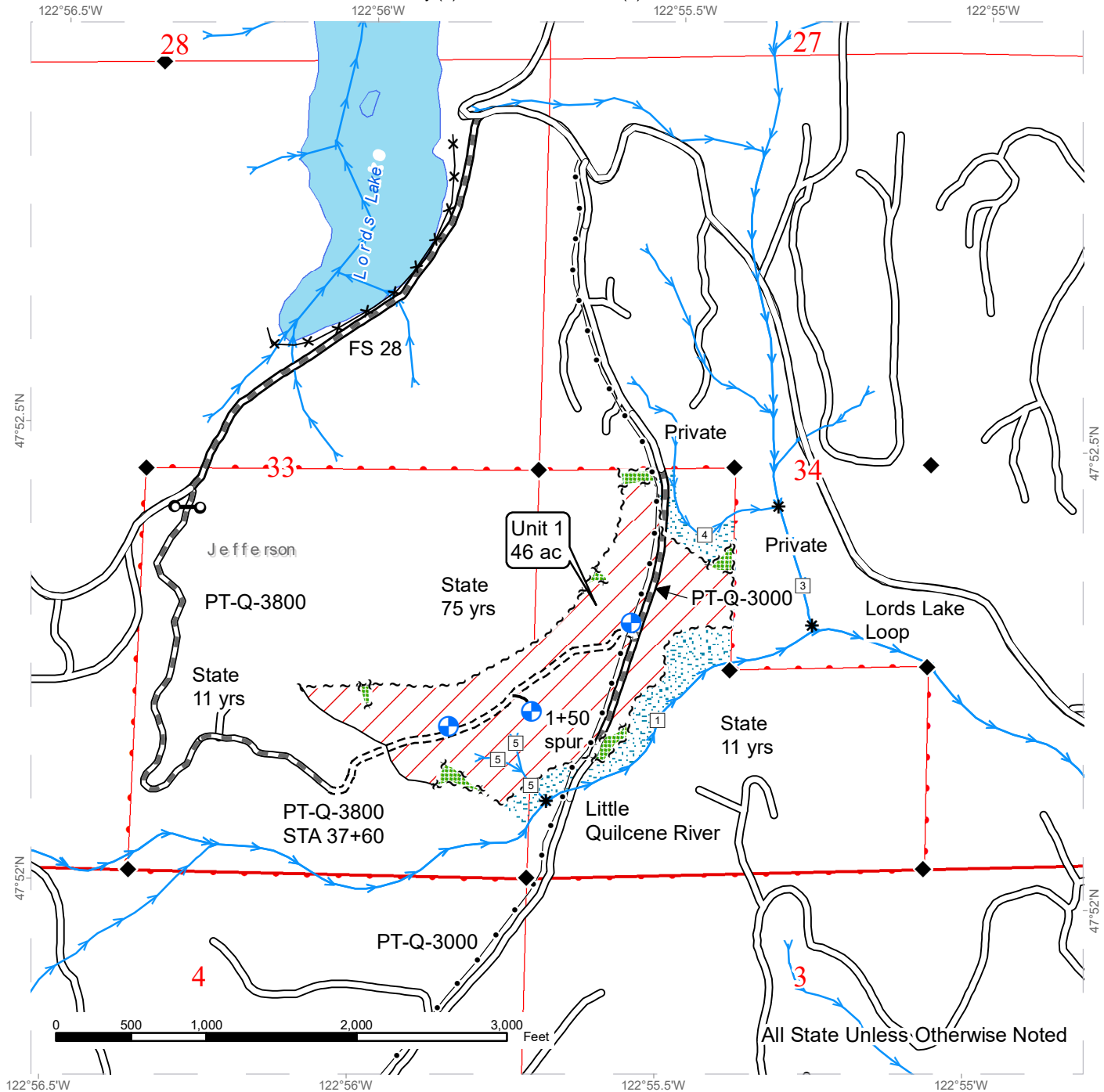
Pit development and creation of the stockpile in the Penny Creek rock pit is required.

There are hazard abatement requirements associated with Unit 3.

# TIMBER SALE MAP

**SALE NAME:** PENNY ALDERWOOD  
**AGREEMENT #:** 30-096664  
**TOWNSHIP(S):** T27R2W, T28R2W  
**TRUST(S):** Common School and Indemnity (3), State Forest Transfer (1)

**REGION:** Olympic Region  
**COUNTY(S):** Jefferson  
**ELEVATION RGE:** 276-852



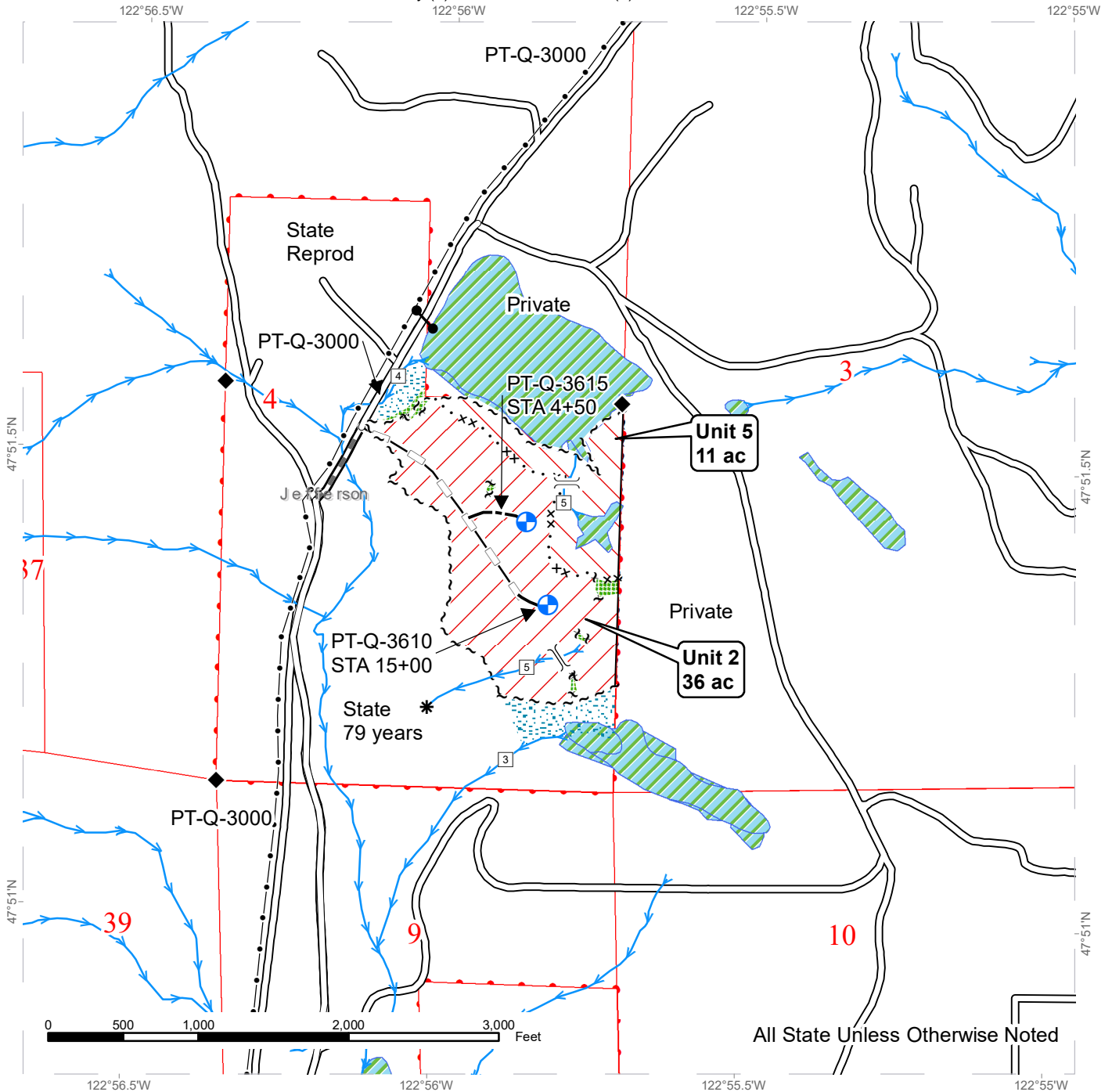
Variable Retention Harvest	Existing Roads	Stream Type
RMZs	Required Pre-Haul Maintenance	Stream Type Break
DNR Managed Lands	Required Construction	Survey Monument
Leave Tree Areas	Optional Construction	Gate Installation
Open Water	Sale Boundary Tags	Landing- Proposed
Streams	Leave Tree Tags	Fence
	Timber Type Change	Buried Waterline



# TIMBER SALE MAP

**SALE NAME:** PENNY ALDERWOOD  
**AGREEMENT #:** 30-096664  
**TOWNSHIP(S):** T27R2W, T28R2W  
**TRUST(S):** Common School and Indemnity (3), State Forest Transfer (1)

**REGION:** Olympic Region  
**COUNTY(S):** Jefferson  
**ELEVATION RGE:** 276-852



All State Unless Otherwise Noted

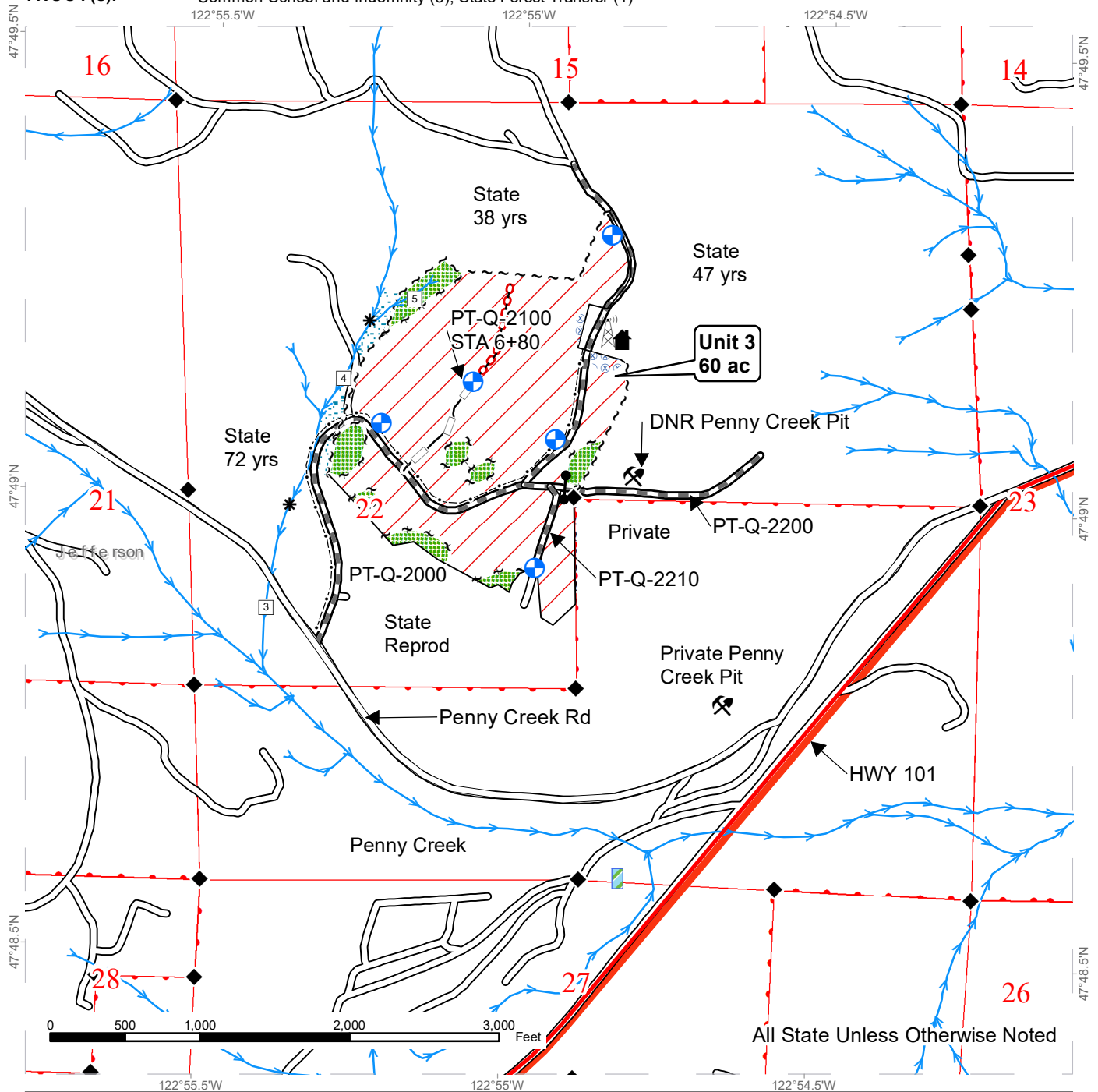
	Variable Retention Harvest		Existing Roads		Stream Type
	Variable Density Thinning		Optional Reconstruction		Stream Type Break
	RMZs		Required Pre-Haul Maintenance		Survey Monument
	DNR Managed Lands		Optional Construction		Designated Crossing
	Leave Tree Areas		Sale Boundary Tags		Gate (Private)
	Wetland		Special Mgmt Area		Landing - Proposed
	Streams		Leave Tree Tags		Buried Waterline
			Timber Type Change		



# TIMBER SALE MAP

**SALE NAME:** PENNY ALDERWOOD  
**AGREEMENT #:** 30-096664  
**TOWNSHIP(S):** T27R2W, T28R2W  
**TRUST(S):** Common School and Indemnity (3), State Forest Transfer (1)

**REGION:** Olympic Region  
**COUNTY(S):** Jefferson  
**ELEVATION RGE:** 276-852



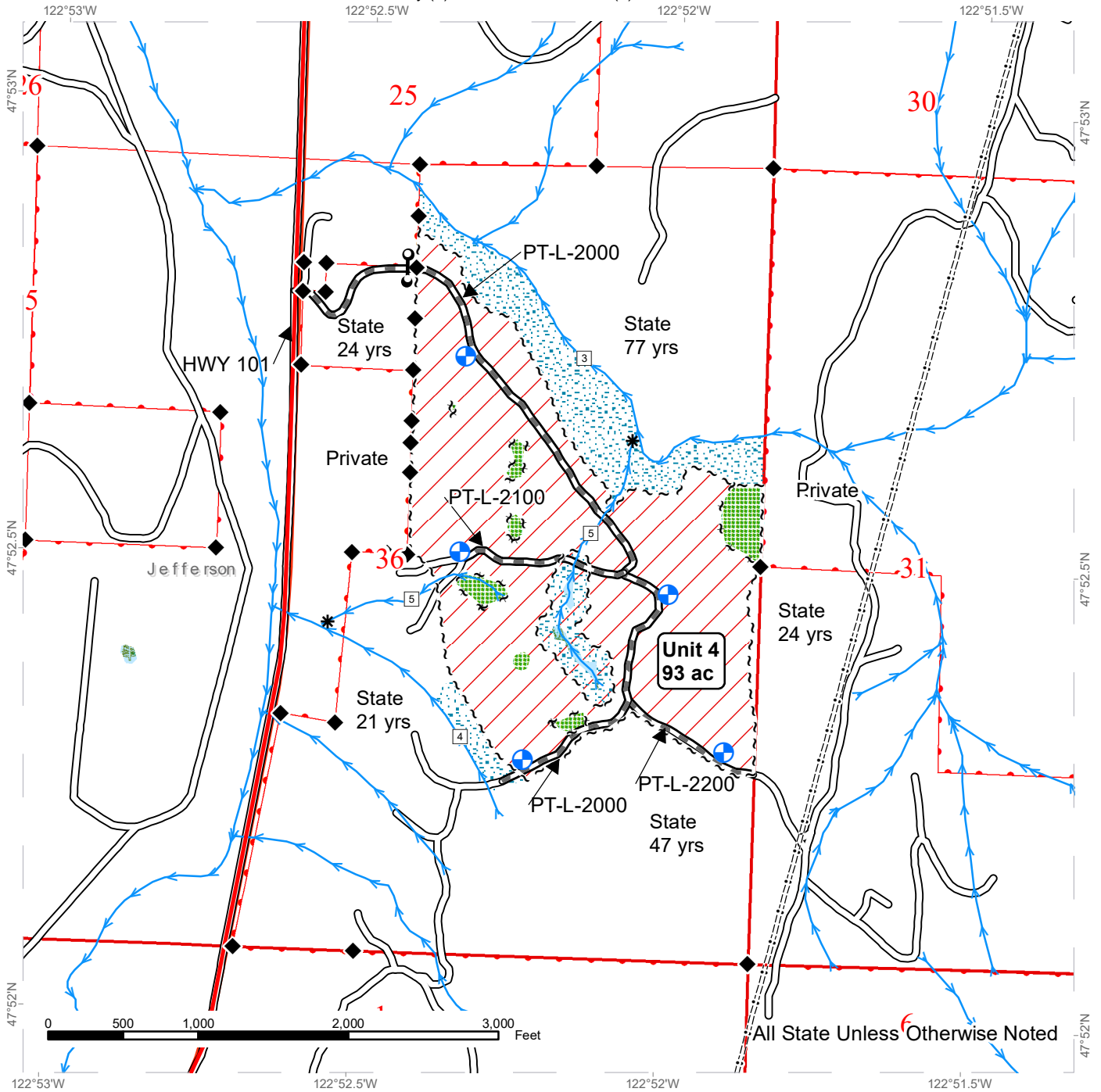
All State Unless Otherwise Noted

Variable Retention Harvest	Existing Roads	Stream Type
Hazard Abatement	Optional Reconstruction	Stream Type Break
RMZs	Required Pre-Haul Maintenance	Survey Monument
DNR Managed Lands	Required Decommissioning	Gate (AA-1)
Leave Tree Areas	Sale Boundary Tags	Landing- Proposed
Streams	Leave Tree Tags	Tower
Rock Pit Location	Timber Type Change	Structure
	Buried Power	

# TIMBER SALE MAP

**SALE NAME:** PENNY ALDERWOOD  
**AGREEMENT #:** 30-096664  
**TOWNSHIP(S):** T27R2W, T28R2W  
**TRUST(S):** Common School and Indemnity (3), State Forest Transfer (1)

**REGION:** Olympic Region  
**COUNTY(S):** Jefferson  
**ELEVATION RGE:** 276-852



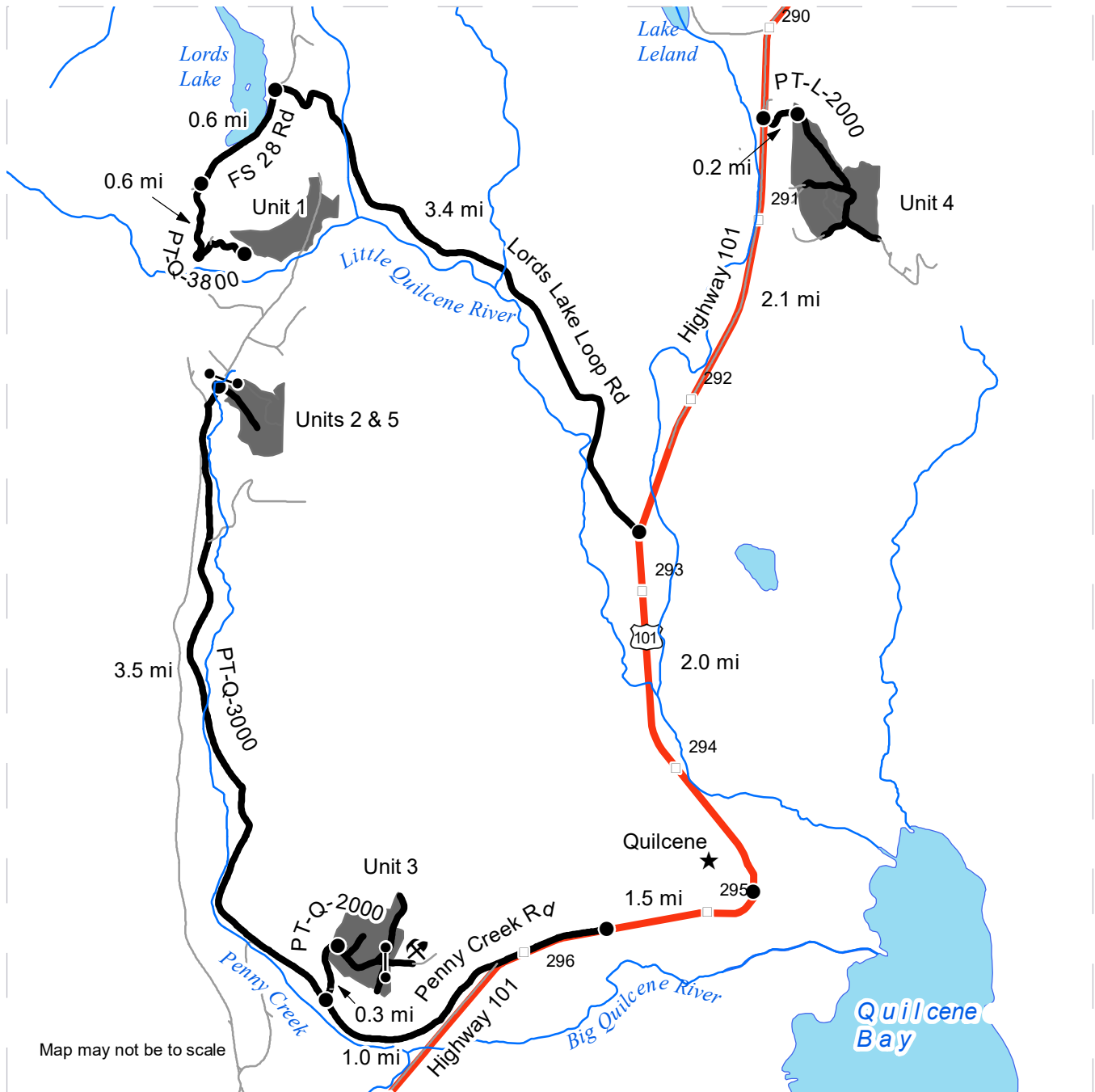
	Variable Retention Harvest		Existing Roads		Stream Type
	RMZs		Highway		Stream Type Break
	DNR Managed Lands		Required Pre-Haul Maintenance		Survey Monument
	Leave Tree Areas		Sale Boundary Tags		Gate Installation
	Wetland		Leave Tree Tags		Landing - Proposed
	Streams				



# DRIVING MAP

**SALE NAME:** PENNY ALDERWOOD  
**AGREEMENT#:** 30-096664  
**TOWNSHIP(S):** T27R2W, T28R2W  
**TRUST(S):** Common School and Indemnity (3), State Forest Transfer (1)

**REGION:** Olympic Region  
**COUNTY(S):** Jefferson  
**ELEVATION RGE:** 276-852



Map may not be to scale

- Timber Sale Unit
- Highway
- Haul Route
- Other Road
- Milepost Markers
- Distance Indicator
- AA-1
 Gate (AA-1)
- X
 Rock Pit
- ★
 Town

**Driving Directions**  
 From Quilcene travel north 2.0 miles on Highway 101. For Unit 1 turn northwest onto Lords Lake Loop road, and go 3.4 miles to US Forest Service 28 road. Turn southwest onto FS 28 and continue 0.6 mile before turning south onto the PT-Q-3800 road. Go an additional 0.6 mile to the sale area.  
 For Unit 4, continue 2.1 miles further north on Highway 101 and take the PT-L-2000 east for 0.2 mile to the sale area.  
 To get to Units 2 and 3, from Quilcene travel southwest on Highway 101 for 1.5 miles. Just before mile marker 296, turn west onto Penny Creek road and continue for 1.0 mile.  
 For Unit 3, turn north on the PT-Q-2000 road and go 0.3 mile to the sale area.  
 For Units 2 and 5 stay on Penny Creek road, which turns into the PT-Q-3000, and continue north 3.5 miles further to the sale area.







TIMBER NOTICE OF SALE

SALE NAME: SPITFIRE

AGREEMENT NO: 30-094839

AUCTION: September 25, 2018 starting at 10:00 a.m., COUNTY: Lewis South Puget Sound Region Office, Enumclaw, WA

SALE LOCATION: Sale located approximately 11 miles east of Elbe.

PRODUCTS SOLD AND SALE AREA:

All timber, except trees marked with blue paint, snags, and down timber existing more than 5 years from the day of sale, bounded by the following: white timber sale boundary tags, timber type change marked with pink flagging, and the 11 Road in Unit #1; white timber sale boundary tags, timber type change marked with pink flagging, and the RT200 Road in Units #2 and #3;

All timber bounded by orange right of way tags in Right of Way A;

All forest products above located on part(s) of Sections 5 and 6 all in Township 14 North, Range 6 East, Sections 31 and 32 all in Township 15 North, Range 6 East, W.M., containing 124 acres, more or less.

CERTIFICATION: This sale is certified under the Sustainable Forestry Initiative® program Standard (cert no: BV-SFIS-US09000572) and FSC 100% raw materials under the Forest Stewardship Council® Standard (cert no: BV-FM/COC-080501).

ESTIMATED SALE VOLUMES AND QUALITY:

Table with columns: Species, Avg DBH, Ring Count, Total MBF, and MBF by Grade (1P, 2P, 3P, SM, 1S, 2S, 3S, 4S, UT). Rows include Douglas fir, Hemlock, Red alder, Red cedar, Cottonwood, Noble fir, and Sale Total.

MINIMUM BID: \$1,714,000.00 BID METHOD: Sealed Bids

PERFORMANCE SECURITY: \$100,000.00 SALE TYPE: Lump Sum

EXPIRATION DATE: October 31, 2020 ALLOCATION: Export Restricted

BID DEPOSIT: \$171,400.00 or Bid Bond. Said deposit shall constitute an opening bid at the appraised price.

HARVEST METHOD: Harvest activities are estimated to be 45 percent uphill cable, and 55 percent ground based harvest. Cable or ground based equipment, with cable-tethered equipment limited to sustained slopes 70 percent or less, self-leveling equipment limited to sustained slopes 60 percent and less and all other ground based equipment limited to sustained slopes 45 percent or less. Yarding may be restricted during wet weather if rutting becomes excessive, per clause H-017.



## TIMBER NOTICE OF SALE

---

Falling, yarding and timber haul will not be permitted from November 1 to May 15, nor on weekends, or State recognized holidays, unless authority to do so is granted, in writing, by the Contract Administrator. If permission is granted to operate from November 1 to May 15, preventative measures may be required to protect water, soils, roads and other forest assets.

### **ROADS:**

13.26 stations of required construction. 9.35 stations of required reconstruction. 35.56 stations of optional construction. 33.10 stations of optional reconstruction. 476.56 stations of required pre-haul maintenance. 477.51 stations of required post-haul maintenance. 24.38 stations of decommissioning, if constructed. Purchaser maintenance on the 11, 11-7, 13, RT208, RT208-1, RT209, RT209-1, and RT210 roads. Designated maintenance on all other roads used.

Rock for this proposal can be obtained from the State owned RT200, Zig Zag and/or TD Rock Pits at no cost to the Purchaser or any commercial rock source at the Purchaser's expense. Rock exploration is required in the TD Rock Source per Road Plan clause 6-13. Rock source development will be required per Road Plan clauses 6-10, 6-12 and as specified in the Rock Source Development Plan.

Operation of road construction equipment and rock haul will not be permitted from November 1 to May 15, nor on weekends, or State recognized holidays, unless authority to do so is granted, in writing, by the Contract Administrator. If permission is granted to operate from November 1 to May 15, the Purchaser may be required to provide a maintenance plan per Road Plan clause 1-26.

### **ACREAGE DETERMINATION**

**CRUISE METHOD:** Unit acreage was determined by traversing boundaries by GPS. Right of way acreage was determined by multiplying length times width. GPS data files are available upon request by emailing [julie.gilling@dnr.wa.gov](mailto:julie.gilling@dnr.wa.gov). See cruise narrative for cruise method.

**FEES:** \$85,750.00 is due on day of sale. \$9.00 per MBF is due upon removal. These are in addition to the bid price.

**SPECIAL REMARKS:** Timber located within Unit #3 must be felled, yarded and shipped prior to June 30, 2019.

All trees located within the RT208 and RT208-1 new construction clearing limits south of Unit #1 boundary must be cut and left onsite.

Purchaser shall cut all vine maple within the harvest units, leaving a stump no more than 12 inches in height.

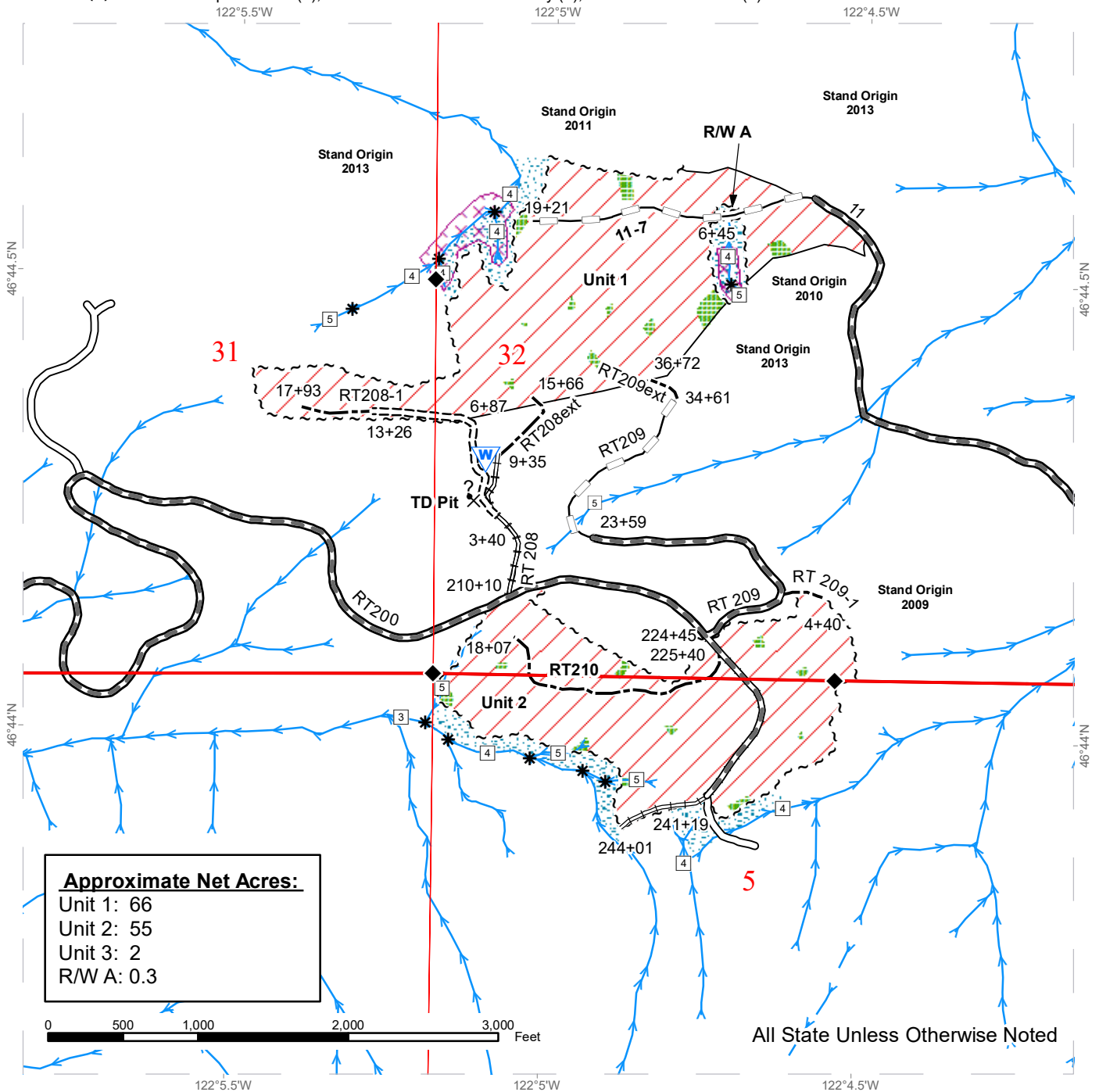
No equipment may operate within, nor logs yarded through or over, leave tree clumps marked with yellow leave tree area tags in Unit #1.

See map for gate locations. Gate keys may be obtained by contacting the South Puget Sound Region Office at 360-825-1631 or by contacting Mike Fowler at 360-819-3406.

# TIMBER SALE MAP

**SALE NAME:** SPITFIRE  
**AGREEMENT #:** 30-094839  
**TOWNSHIP(S):** T14R6E, T15R6E  
**TRUST(S):** Capitol Grant (7), Common School and Indemnity (3), State Forest Transfer (1)

**REGION:** South Puget Sound Region  
**COUNTY(S):** Lewis  
**ELEVATION RGE:** 1,840-2,770

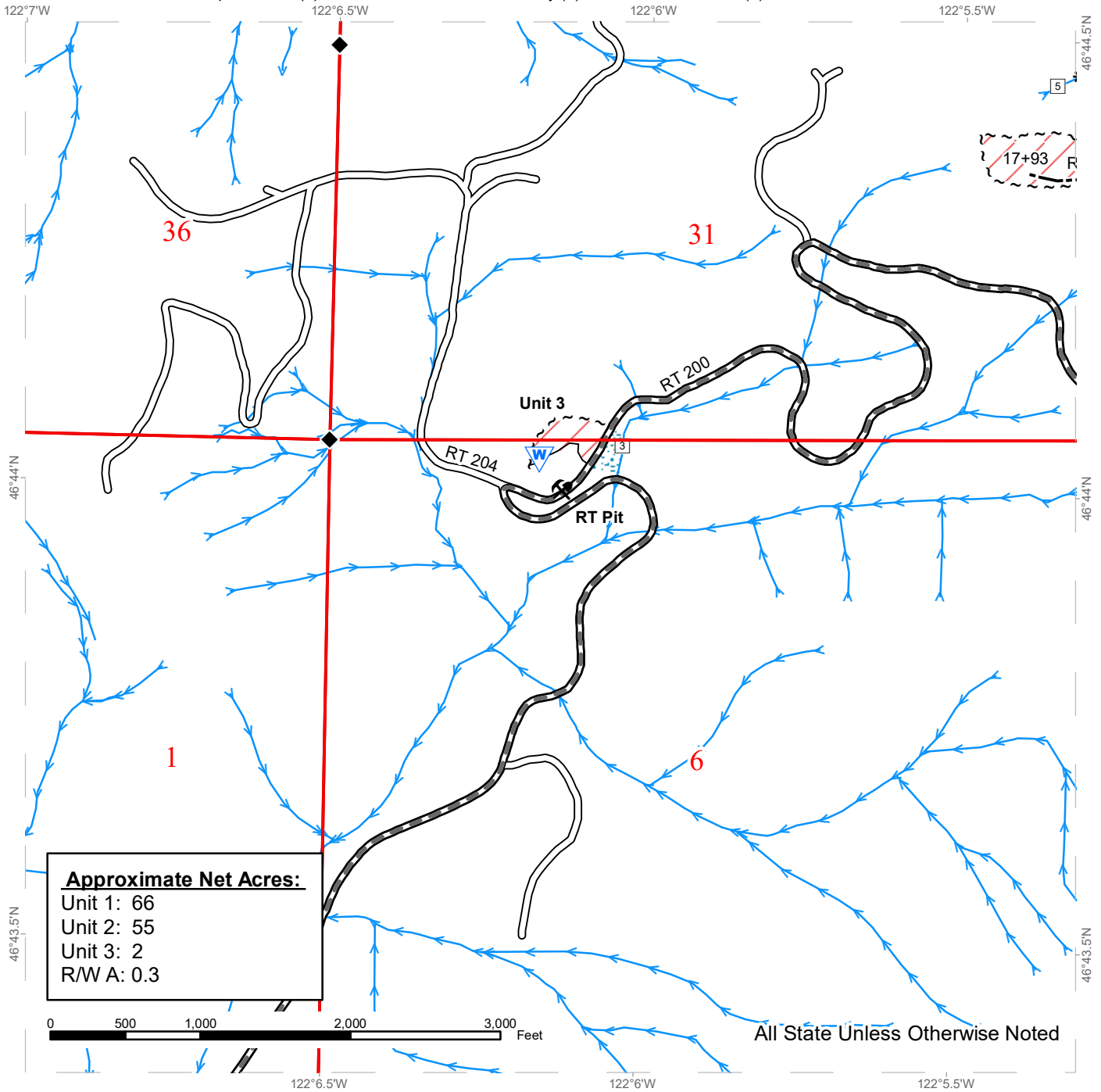


Variable Retention Harvest	Required Reconstruction	Potential Rock Source
Right of Way Tags	Optional Construction	streams
Sale Boundary Tags	Optional Reconstruction	Survey Monument
Timber Type Change	Leave Tree Area	Public Land Survey Sections
Existing Roads	Riparian Mgt Zone	Public Land Survey Townships
Required Pre-Haul Maintenance	Tailhold Restriction Area	
Required Construction	Waste Area	

# TIMBER SALE MAP

**SALE NAME:** SPITFIRE  
**AGREEMENT #:** 30-094839  
**TOWNSHIP(S):** T14R6E, T15R6E  
**TRUST(S):** Capitol Grant (7), Common School and Indemnity (3), State Forest Transfer (1)

**REGION:** South Puget Sound Region  
**COUNTY(S):** Lewis  
**ELEVATION RGE:** 1,840-2,770



**Approximate Net Acres:**  
 Unit 1: 66  
 Unit 2: 55  
 Unit 3: 2  
 R/W A: 0.3

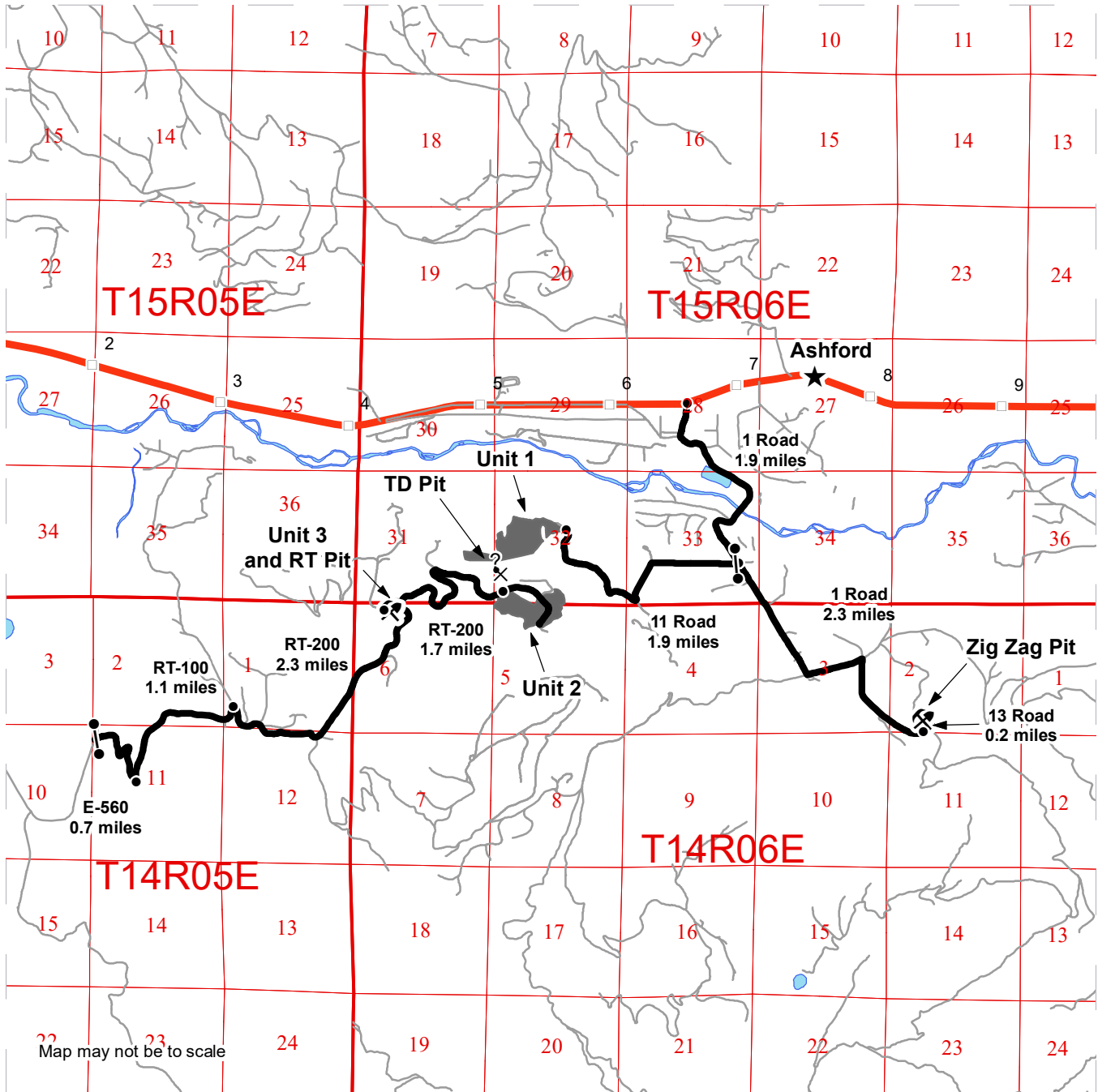
	Variable Retention Harvest		Waste Area
	Sale Boundary Tags		Rock Pit
	Timber Type Change		streams
	Existing Roads		Survey Monument
	Required Pre-Haul Maintenance		Public Land Survey Sections
	Optional Construction		Public Land Survey Townships
	Riparian Mgt Zone		



# DRIVING MAP

**SALE NAME:** SPITFIRE  
**AGREEMENT#:** 30-094839  
**TOWNSHIP(S):** T14R6E, T15R6E  
**TRUST(S):** Capitol Grant (7), Common School and Indemnity (3), State Forest Transfer (1)

**REGION:** South Puget Sound Region  
**COUNTY(S):** Lewis  
**ELEVATION RGE:** 1,840 - 2,770



Map may not be to scale

- Distance Indicator
- Gate (383 Master Lock)
- ? Potential Rock Source
- ⛏ Rock Pit
- ★ Town
- Milepost Markers
- Haul Route
- Other Road
- Timber Sale Unit

**DRIVING DIRECTIONS:**

Unit 1: Take SR-706 east from Elbe for 6.7 miles. Turn right onto the 1 Road and follow for 1.9 miles. Turn right onto the 11 Road and follow for 1.9 miles to arrive at Unit 1.

Unit 2 and 3: Take Mineral Creek Road south from Mineral for 2.2 miles. Turn right onto the E-560 Road and follow for 0.7 miles. Bear left and continue on the RT100 road for 1.1 miles. Turn right onto the RT200 Road and follow for 2.3 miles to reach Unit 3. Continue on the RT200 Road for 1.7 miles to reach Unit 2.







TIMBER NOTICE OF SALE

SALE NAME: KRISTINE

AGREEMENT NO: 30-095703

AUCTION: September 25, 2018 starting at 10:00 a.m., COUNTY: Mason South Puget Sound Region Office, Enumclaw, WA

SALE LOCATION: Sale located approximately 11 miles west of Belfair.

PRODUCTS SOLD AND SALE AREA:

All timber, except trees marked with blue paint or bounded out by yellow leave tree area tags, snags, and down timber existing more than 5 years from the day of sale bounded by the following: white timber sale boundary tags, property lines marked with Carsonite posts, and the I-1100 Road in Unit #1; white timber sale boundary tags, and property lines marked with Carsonite posts in Units #2 and #4; white timber sale boundary tags, property lines marked with Carsonite posts, and timber type change marked with pink flagging in Unit #3;

All timber bounded by orange right of way boundary tags in Unit #5;

All forest products above located on part(s) of Sections 19, 20, 29 and 30 all in Township 23 North, Range 2 West, W.M., containing 179 acres, more or less.

CERTIFICATION: This sale is certified under the Sustainable Forestry Initiative® program Standard (cert no: BV-SFIS-US09000572) and FSC 100% raw materials under the Forest Stewardship Council® Standard (cert no: BV-FM/COC-080501).

ESTIMATED SALE VOLUMES AND QUALITY:

Table with columns: Species, Avg Ring DBH Count, Total MBF, and MBF by Grade (1P, 2P, 3P, SM, 1S, 2S, 3S, 4S, UT). Rows include Douglas fir, Hemlock, White pine, Lodgepole, Red cedar, Red alder, and Sale Total.

MINIMUM BID: \$1,372,000.00 BID METHOD: Sealed Bids

PERFORMANCE SECURITY: \$100,000.00 SALE TYPE: Lump Sum

EXPIRATION DATE: October 31, 2020 ALLOCATION: Export Restricted

BID DEPOSIT: \$137,200.00 or Bid Bond. Said deposit shall constitute an opening bid at the appraised price.

HARVEST METHOD: Ground based equipment limited to sustained slopes of 40 percent or less. Yarding may be restricted during wet weather if rutting becomes excessive, per clause H-017.

Falling, yarding, and timber haul in Unit #1 will not be permitted from November 1 to April 30, unless authority to do so is granted, in writing, by the Contract Administrator. If



## TIMBER NOTICE OF SALE

---

permission is granted to operate from November 1 to April 30, preventative measures may be required to protect water, soil, roads and other forest assets.

In addition to the above restrictions, falling, yarding, and timber haul for all units will not be permitted on weekdays from 7:00 pm to 7:00 am, weekends or State recognized holidays, unless approved in writing by the Contract Administrator.

### **ROADS:**

18.40 stations of required construction. 67.59 stations of optional construction. 241.27 stations of required pre-haul maintenance. 277.35 stations of required post-haul maintenance. 49.91 stations of abandonment, if constructed. Purchaser maintenance on all roads used.

Rock for this proposal may be obtained from the State owned Sandhill Rock Pit at no cost to the Purchaser or any commercial rock source at the Purchaser's expense.

Road construction and rock haul will in Unit #1 not be permitted from November 1 to April 30, unless approved in writing by the Contract Administrator. If permission is granted to operate from November 1 to April 30, a maintenance plan is required per Road Plan clause 1-26.

In addition to the above restrictions, road construction and rock haul for all units will not be permitted weekdays from 7:00 pm to 7:00 am, weekends or State recognized holidays, unless approved in writing by the Contract Administrator.

### **ACREAGE DETERMINATION**

**CRUISE METHOD:** Acreage for Units #1, #2, #3, and Unit #4 was determined by traversing boundaries by GPS, Unit #5 acreage was determined by multiplying length times width. GPS data files are available upon request by emailing [julie.gilling@dnr.wa.gov](mailto:julie.gilling@dnr.wa.gov). See cruise narrative for cruise method.

**FEES:** \$66,971.00 is due on day of sale. \$9.00 per MBF is due upon removal. These are in addition to the bid price.

**SPECIAL REMARKS:** Purchaser must obtain and provide an executed copy to DNR of a Road Approach Permit with Mason County for I-3020 Road and Spur 4 from Haven Way and Tahuya Blacksmith roads.

Landings along Tahuya Blacksmith Road within Unit #1 may require the Purchaser to obtain additional approval or permits from Mason County.

This sale contains high quality Douglas fir and may contain some Douglas fir poles, see Cruise for details.

Purchaser must provide a written Extreme Hazard Abatement Plan, which meets the requirements of contract clause S-020. Hazard Abatement is required within 100 feet of the Tahuya Blacksmith, I-1000, and I-1100 roads, and 200 feet from structures adjacent to Units #1, #3, and #4.

Purchaser is responsible for any maintenance requirements on county roads, as specified by Mason County.

Purchaser is responsible to provide and install a steel gate on the I-3020 Road, see the Road Plan for additional details.



## TIMBER NOTICE OF SALE

---

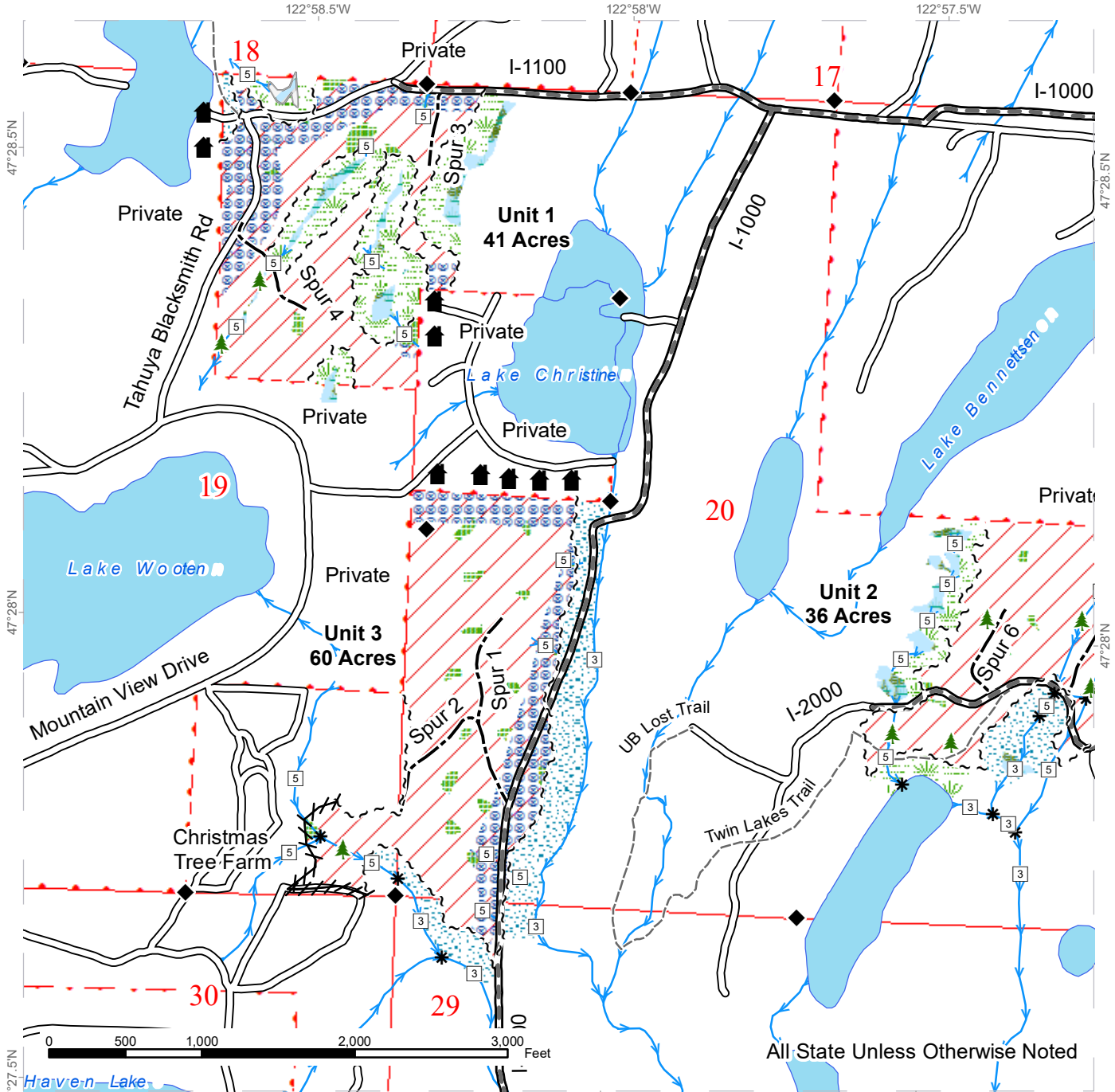
Purchaser shall cut all vine maple within the harvest units, leaving a stump no more than 12 inches in height.

See map for gate locations. Gate keys may be obtained by contacting the South Puget Sound Region Office at 360-825-1631 or by contacting Nathan McReynolds at 253-381-2015.

# TIMBER SALE MAP

**SALE NAME:** KRISTINE  
**AGREEMENT #:** 30-095703  
**TOWNSHIP(S):** T23R2W  
**TRUST(S):** Scientific School (10), State Forest Transfer (1)

**REGION:** South Puget Sound Region  
**COUNTY(S):** Mason  
**ELEVATION RGE:** 360-480

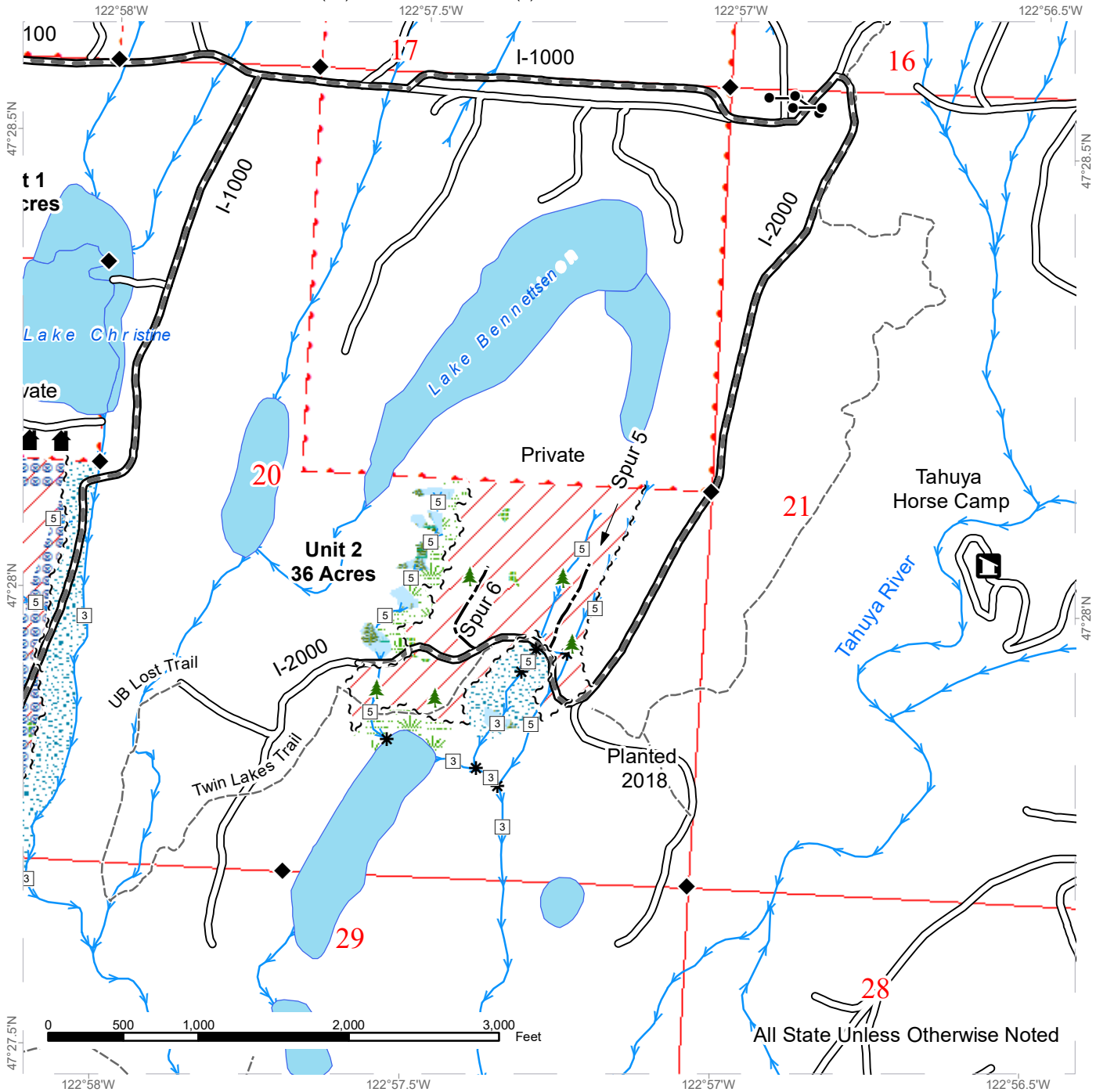


Variable Retention Harvest	Sale Boundary Tags	Existing Roads	Stream Type
Leave Tree Area	Leave Tree Tags	Required Pre-Haul Maintenance	Stream Type Break
Riparian Mgt Zone	Right of Way Tags	Optional Construction	Survey Monument
Forested Wetland	Property Line	Trails	Leave Tree Area
Wetland Mgt Zone	Flag Line	Streams	Structure
Hazard Abatement Area	Timber Type Change		

# TIMBER SALE MAP

**SALE NAME:** KRISTINE  
**AGREEMENT #:** 30-095703  
**TOWNSHIP(S):** T23R2W  
**TRUST(S):** Scientific School (10), State Forest Transfer (1)

**REGION:** South Puget Sound Region  
**COUNTY(S):** Mason  
**ELEVATION RGE:** 360-480



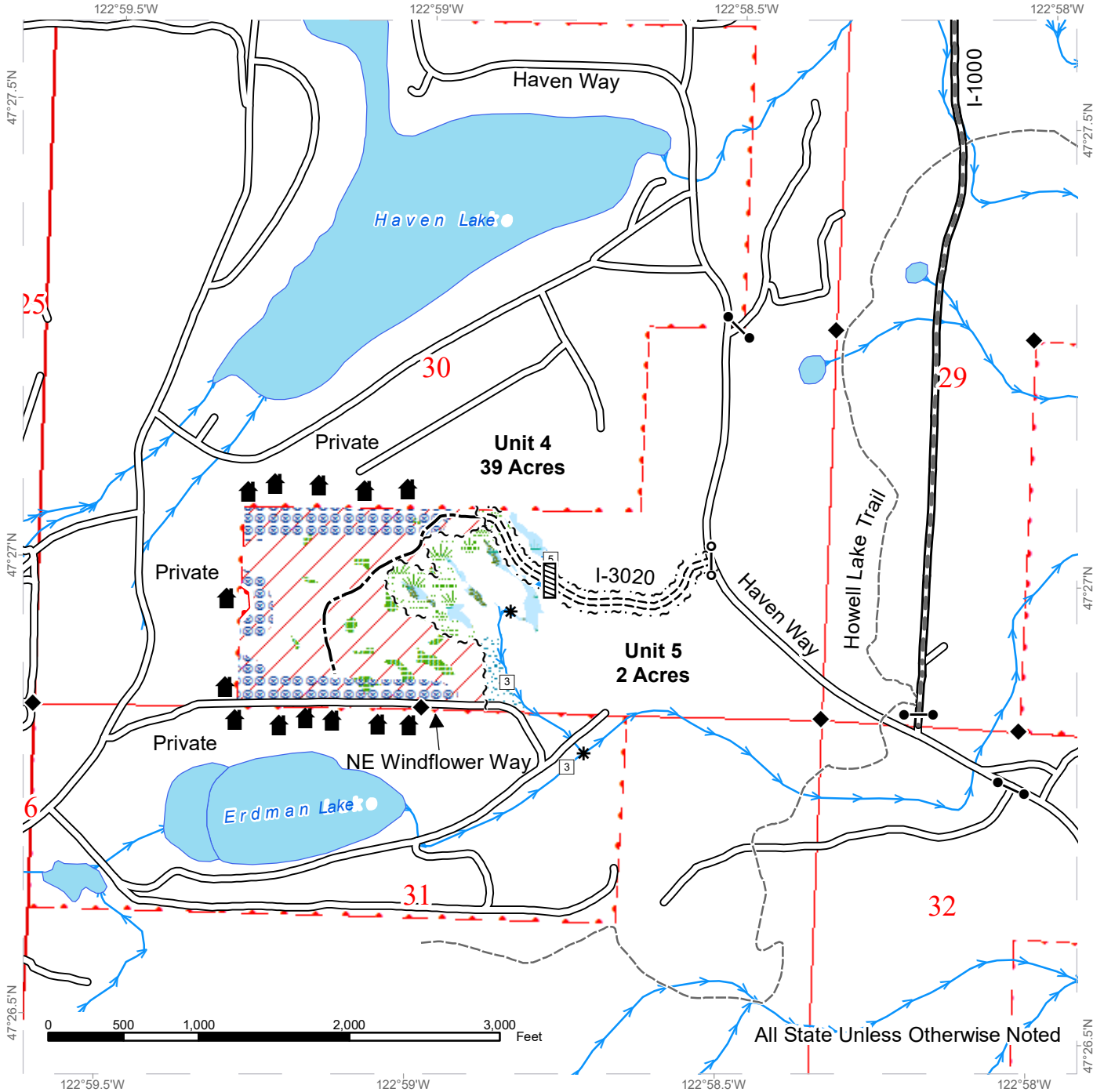
All State Unless Otherwise Noted

Variable Retention Harvest	Sale Boundary Tags	Existing Roads	Stream Type
Leave Tree Area	Leave Tree Tags	Required Pre-Haul Maintenance	Stream Type Break
Riparian Mgt Zone	Right of Way Tags	Optional Construction	Survey Monument
Forested Wetland	Property Line	Trails	Gate
Wetland Mgt Zone	Flag Line	Streams	Leave Tree Area
Hazard Abatement Area	Timber Type Change		Recreation Site
			Structure

# TIMBER SALE MAP

**SALE NAME:** KRISTINE  
**AGREEMENT #:** 30-095703  
**TOWNSHIP(S):** T23R2W  
**TRUST(S):** Scientific School (10), State Forest Transfer (1)

**REGION:** South Puget Sound Region  
**COUNTY(S):** Mason  
**ELEVATION RGE:** 360-480



All State Unless Otherwise Noted

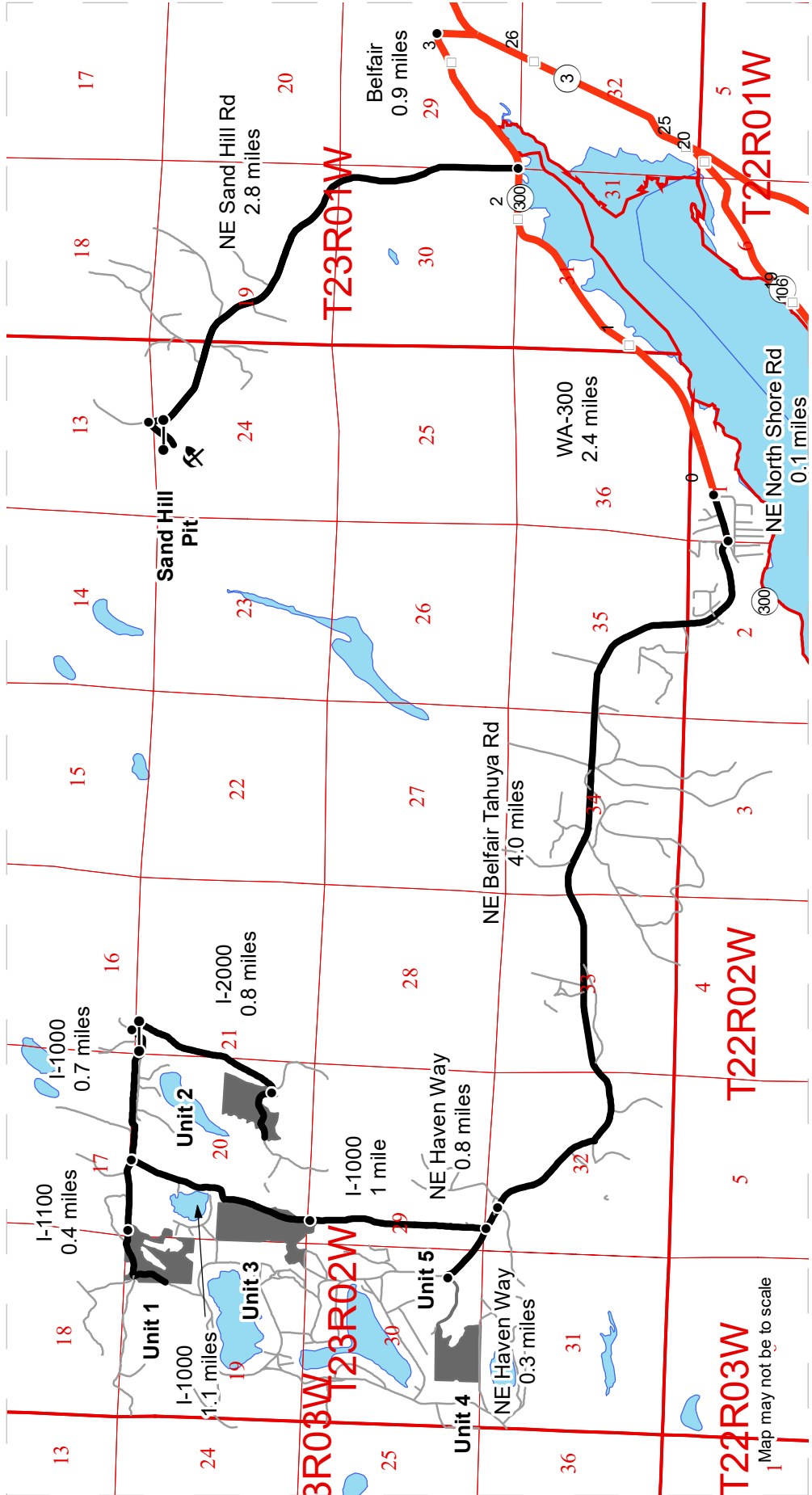
Variable Retention Harvest	Sale Boundary Tags	Existing Roads	Stream Type
Leave Tree Area	Leave Tree Tags	Required Pre-Haul Maintenance	Stream Type Break
Riparian Mgt Zone	Right of Way Tags	Required Construction	Survey Monument
Forested Wetland	Property Line	Optional Construction	Culvert
Wetland Mgt Zone	Flag Line	Trails	Gate Installation
Hazard Abatement Area	Timber Type Change	Streams	Structure



**DRIVING MAP**

**SALE NAME:** KRISTINE  
**AGREEMENT#:** 30-095703  
**TOWNSHIP(S):** T23R2W  
**TRUST(S):** Scientific School (10), State Forest Transfer (1)

**REGION:** South Puget Sound Region  
**COUNTY(S):** Mason  
**ELEVATION RGE:** 360-480



- Timber Sale Unit
- Highway
- Haul Route
- Other Road
- Milepost Markers
- Distance Indicator
- Gate (786)
- Rock Pit

**DRIVING DIRECTIONS:**

**Unit 1:** From Belfair travel west on WA-300 W for 3.3 miles. Continue onto NE North Shore Rd. for 0.1 miles. Turn right onto NE Belfair Tahuya Rd. and follow for 4.0 miles. Turn right onto NE Haven Way and follow for 0.8 miles. Turn right onto the I-1000 and follow for 2.1 miles. Turn left onto the I-1100 and follow 0.4 miles to reach Unit 1.

**Unit 2:** From the junction of the I-1000 and I-1100 continue on the I-1000 for 0.7 miles. Turn right onto the I-2000 and follow for 0.8 miles to reach Unit 2.

**Unit 3:** From the junction of Haven Way and the I-1000 continue on I-1000 for 0.8 miles to reach Unit 3.

**Unit 5 (Right-of-Way Unit):** From the junction of Haven Way and the I-1000 continue on Haven Way for 0.3 miles. Unit 5 will be on your left.

**Unit 4:** To reach Unit 4 you must walk via Unit 5. Sand Hill Pit: From Belfair travel west on WA-300 W for 0.9 miles. Turn right onto NE Sand Hill Rd. and follow for 2.8 miles. Sand Hill Pit will be on your right.

Map may not be to scale



**State of Washington  
Department of Natural Resources**

**SEALED BID FORM**

Sale Name \_\_\_\_\_ Agreement Number \_\_\_\_\_

\_\_\_\_\_ hereby submits the following bid for timber.  
(Print full, legal company name)

\_\_\_\_\_  
(Street address, City, State, Zip Code)

\_\_\_\_\_  
(Phone Number)

---

---

**Lump Sum Bid** (Not Including Fees)      \$ \_\_\_\_\_ **For Total Sale**

**Weight Scale Sale Bid** (Not Including Fees)      \$ \_\_\_\_\_ / **Ton**

**Scribner Scale Sale Bid** (Not Including Fees)      \$ \_\_\_\_\_ / **MBF For Biddable Species**

---

---

**BID DEPOSIT**

**Bid Deposit Amount:** \$ \_\_\_\_\_

**Bid Deposit Type:**

- Cash, certified check, cashiers check, or money order  
 Per Sale Bid Bond  
 Statewide Bid Bond, Number \_\_\_\_\_

---

---

**Within 30 days of confirmation date** the successful bidder agrees to furnish Performance Security acceptable to the State in the amount specified on the Notice of Sale. Performance Security must guarantee performance of all provisions of the contract and payment of any damages caused by operations under the contract or resulting from the successful bidders noncompliance with any rule or law.

Bidder's Warranty and Bid Signature

*By signing and submitting this bid as an offer to purchase forest products from the State, the Bidder hereby warrants to the State that they have had an opportunity to fully inspect the sale area and the forest products being sold. Bidder further warrants to the State that they enter this bid based upon their own judgments of the value of the forest products, formed after their own examination and inspection of both the timber sale area and the forest products being sold. Bidder also warrants to the State that they enter this bid without any reliance upon the volume estimates, acreage, appraisals, pre-bid documentation, or any other representation by the Washington State Department of Natural Resources.*

\_\_\_\_\_ Date \_\_\_\_\_  
(Signature of Authorized Representative submitting this bid)

\_\_\_\_\_  
(Print name and title of Authorized Representative submitting this bid)

**Note: all sales are subject to confirmation by the Commissioner of Public Lands (Refer 79.15.120)**

## Instructions For Completing Sealed Bid Form

---

*All bids submitted for the purchase of forest products being sold by the Washington State Department of Natural Resources must have an original signature on behalf of the person or entity submitting the bid, and must be on the form provided in this booklet or a photocopy thereof. The DNR will not accept bids that are not signed, and will not accept bids that are not on the current, approved bid form. All appropriate blanks on bid form must be completed including the bid bond number if the bidder is relying upon a bid bond for bid deposit.*

*For more specific information, contact the appropriate region office.*

---

### In-Person Bids

- A. Sealed bids must be in auction box before 10:00 a.m. on the day of auction at the location specified in the Timber Notice of Sale.
  - B. Sealed bids must be submitted in an envelope with the name of the sale, the bidder's name and the contract number clearly written on the outside of the envelope. The full legal name and business address of the bidder must be inserted where indicated on the form, and must be on the bid bond and timber sale contract. The bid form must be signed by an authorized representative. When a bidder has more than one person authorized to bid, documentation of those persons with signature authority for bidding must accompany the bid or be on file at the region office. Sealed bid envelopes are available at all region offices. One bid per envelope.
  - C. Sealed bid envelopes **must** contain a completed bid form and a bid deposit.
  - D. Sealed bid envelopes **may** contain a check for the Initial Deposit amount and a check for fees.
- 

### Mailed Bids

- A. Bids that are mailed are required to have printed on the outside: "DO NOT OPEN UNTIL SALE DATE. SEALED BID ENCLOSED". The sealed bid envelope(s) will be enclosed inside the mailed-in envelope. Mailed bids must be submitted in an envelope with the name of the sale, the bidder's name and the agreement number clearly written on the outside of the envelope. The full legal name and business address of the bidder must be inserted where indicated on the form, and must be the same on the bid bond and timber sale contract. The Sealed Bid Form must be signed by an authorized representative. When a bidder has more than one person authorized to bid, documentation of those persons with signature authority for bidding must accompany the bid or be on file at the region office. Mail-in envelopes are available at all region offices. One bid per mailed-in envelope.
  - B. Bids that are mailed will be accepted up to 4:30 p.m. the last business day before the auction by the region office in which the sale is located. Bidders assume the risk for the method of delivery. The DNR assumes no responsibility for any delays caused by any delivery service.
  - C. Sealed bid envelopes **must** contain a completed bid form and a bid deposit.
  - D. Sealed bid envelopes **may** contain a check for the Initial Deposit amount and a check for fees.
- 

### Initial Deposit:

**Lump Sum Sales** - Initial Deposit must equal 10% of the total bid submitted.  
(25% if the bidder is a defaulter as defined under WAC 332-140-300)

**Weight Scale Sales** - Initial Deposit must equal 10% of the bid per ton multiplied by the total sale estimated tonnage. (25% if the bidder is a defaulter as defined under WAC 332-140-300)

**Scribner MBF Scale Sales** - Initial Deposit must equal 10% of the bid per MBF multiplied by the total sale MBF. (25% if the bidder is a defaulter as defined under WAC 332-140-300)

**State of Washington  
Department of Natural resources**

**STATEWIDE BID BOND**

Bond Number \_\_\_\_\_

\_\_\_\_\_ of \_\_\_\_\_,  
(Principal's Name) (City, State)

hereinafter called PRINCIPAL, and \_\_\_\_\_ hereinafter called  
SURETY,

a corporation organized under the laws of the State of \_\_\_\_\_, and authorized to transact surety business in the State of Washington, as SURETY, are held and firmly bound jointly and severally to the State of Washington, Department of Natural Resources, hereinafter called the STATE, in the sum of \$150,000.00 Dollars, lawful money of the United States of America. The PRINCIPAL binds itself, its heirs, executors, administrators, successors, and assigns, and the SURETY binds itself, its successors, and assigns, all jointly and severally.

This bond shall be governed by the laws of the State of Washington. In the event of a lawsuit involving this bond, a venue shall be proper only in Thurston County Superior Court.

Signed, sealed and dated this \_\_\_\_\_ day of \_\_\_\_\_, \_\_\_\_\_ .  
(month) (year)

This statewide bid bond may be used for bidding between the following dates:

Starting:

Ending:

**It Is Hereby Understood and Agreed:**

If PRINCIPAL is an apparent high bidder, PRINCIPAL shall before 4:30 p.m ., on day of sale, pay to the STATE the amount of the initial deposit in the form of a certified check, cashier's check, bank draft, cash or money order, then this agreement shall be void for the sale on which the payment is made; otherwise, it will remain in force.

SURETY will make payment to the STATE within ten days after demand by the STATE if the PRINCIPAL shall fail to make timely payment as described above.

The SURETY may cancel this bond by sending a written notice to the STATE, not less than forty-five days before a cancellation date; liability shall terminate as to acts or omissions of the PRINCIPAL that occur after the cancellation date.

The PRINCIPAL and the SURETY executed this bond on the date first mentioned.

**Principal:** (Above named)

Signature: \_\_\_\_\_

Name: \_\_\_\_\_

Title: \_\_\_\_\_

Address: \_\_\_\_\_

City: \_\_\_\_\_  
State & Zip Code

**Surety:** (Above named)

Signature: \_\_\_\_\_

Name: \_\_\_\_\_

Title: \_\_\_\_\_

Address: \_\_\_\_\_

City: \_\_\_\_\_  
State & Zip Code

**Surety:** (Local Office of Authorized agent)

Signature: \_\_\_\_\_

Name: \_\_\_\_\_

Title: \_\_\_\_\_

Address: \_\_\_\_\_

City: \_\_\_\_\_  
State & Zip Code

Notary or Company Seal in Space Above

## **Instructions for Completing Timber Sale Statewide Bid Bond**

- A. This form is authorized for use as bid guaranty to qualify for bidding on Washington State Department of Natural Resources timber sales.
- B. The Statewide Bid Bond may be used as bid guaranty on more than one timber sale.
- C. The full legal name and business address of the PRINCIPAL must be inserted where indicated and must be the same as will appear on the bidding record and timber sale contract. The bond must be signed by an authorized person. Additionally, the name must be typed or printed below the signature and title must be shown.
- D. The full legal name and business address of the SURETY must be inserted where indicated. The bond must be signed by an authorized person. Additionally, the name must be typed or printed below the signature and the title must be shown.
- E. If the SURETY does not have a Washington State office or resident agent, but is authorized to transact surety business in the State of Washington as SURETY, it may leave this signature block blank.
- F. This form must be received by the Department of Natural Resources, Product Sales & Leasing Division, PO BOX 47016, Olympia, Washington, 98504-7016, ten days in advance of the auction.
- G. **The State reserves the right to reject *incomplete or incorrect* bid bond forms, making such forms unacceptable as bid guaranty.**





**State of Washington  
Department of Natural Resources**

**Timber Sale Per Sale Bid Bond**

Bond Number \_\_\_\_\_

\_\_\_\_\_ of \_\_\_\_\_, hereinafter called PRINCIPAL, and \_\_\_\_\_, hereinafter called SURETY, a corporation organized under the laws of the State of \_\_\_\_\_ and authorized to transact surety business in the State of Washington, as SURETY, are held and firmly bound jointly and severally to the State of Washington, Department of Natural Resources, hereinafter called the STATE, in the sum of \$ \_\_\_\_\_ Dollars, lawful money of the United States of America. The PRINCIPAL binds itself, its heirs, executors, administrators, successors, and assigns, and the SURETY binds itself, its successors, and assigns, all jointly and severally.

This bond shall be governed by the laws of the State of Washington. In the event of a lawsuit involving this bond, venue shall be proper only in Thurston County Superior Court.

Signed, sealed, and dated this \_\_\_\_\_ day of \_\_\_\_\_, 20 \_\_\_\_\_.

**BID IDENTIFICATION:**

SALES NAME(S)	REQUIRED DEPOSIT	AGREEMENT NUMBER(S)

**DATE OF BID:** \_\_\_\_\_

**It Is Hereby Understood and Agreed:**

*If* PRINCIPAL is the high bidder on the sale(s) identified above and, within ten (10) days of the day of sale, transmits cash, certified check, cashier's check, bank draft or money order, payable to the STATE, in the amount of the bid guaranty required by the terms of the Notice of Sale, *then* this obligation shall be void; *otherwise*, it shall remain in force.

SURETY will make payment to the STATE within ten (10) days after demand by the STATE whenever the PRINCIPAL shall fail to make timely payment as described above.

IN WITNESS WHEREOF: the PRINCIPAL and the SURETY have caused this bond to be executed on the date first mentioned.

**SECOND OFFICER:**

Signature: \_\_\_\_\_

Name: \_\_\_\_\_

Title: \_\_\_\_\_

**PRINCIPAL:** (Above Named)

Signature: \_\_\_\_\_

Name: \_\_\_\_\_

Title: \_\_\_\_\_

**SURETY:** (Local Office of Authorized Agent)

Signature: \_\_\_\_\_

Name: \_\_\_\_\_

Title: \_\_\_\_\_

Address: \_\_\_\_\_

City: \_\_\_\_\_

State & Zip: \_\_\_\_\_

**SURETY:** (Above Named)

Signature: \_\_\_\_\_

Name: \_\_\_\_\_

Title: \_\_\_\_\_

Address: \_\_\_\_\_

City: \_\_\_\_\_

State & Zip \_\_\_\_\_

**NOTARY OR COMPANY SEAL IN THE SPACE ABOVE**

## **Instructions for Completing Timber Sale Per Sale(s) Bid Bond**

- A. This form is authorized for use as bid guaranty to qualify for bidding on Washington State Department of Natural Resources timber sales.
- B. The Timber Sale Per Sale Bid Bond may be used as bid guaranty on more than one timber sale auction held the same date at the same location.
- C. The full legal name and business address of the PRINCIPAL must be the same as will appear on the bidding record and timber sale contract. The bond must be signed by an authorized person, the name typed or printed, and title shown. If PRINCIPAL is a corporation, a second officer must sign in the space to the left of the signature of the officer executing for the PRINCIPAL.
- D. The full legal name and business address of the SURETY must be inserted where indicated. The bond must be signed by an authorized person. Additionally, the name must be typed or printed below the signature and the title must be shown. If this person is not an officer of the corporation, evidence of authority must be submitted.
- E. If the SURETY does not have a Washington State office or resident agent, but is authorized to transact surety business in the State of Washington as Surety, it may leave the local office signature block blank.
- F. The date of the bid bond must not be later than the auction date.
- G. **The State reserves the right to reject incomplete or *incorrect* bid bond forms, making such forms unacceptable as guaranty.**



STATE OF WASHINGTON  
DEPARTMENT OF NATURAL RESOURCES

**LOG SORT SEALED BID FORM**

Sale Name \_\_\_\_\_ Agreement Number \_\_\_\_\_ Date \_\_\_\_\_

\_\_\_\_\_ hereby submits the following bid for delivered logs.  
(Print Company Name)

\_\_\_\_\_ Telephone Number \_\_\_\_\_  
(Print Name Authorized Company Representative) (Contact for bid result notification)

\_\_\_\_\_  
(Street Address)

\_\_\_\_\_  
(City, State and Zip)

Agreement Number	Sort Number	<b>Delivered Logs Bid Amount</b> (fill in one only)	
		\$ / MBF	\$ / ton

**Bid Deposit Amount** \$ \_\_\_\_\_

**Bid Deposit Type:**  Cash, Certified Check, Cashiers Check, or Money Order  
 Per Sale Bid Bond  
 Statewide Bid Bond, Number \_\_\_\_\_

The successful bidder agrees to furnish payment security acceptable to the State in the amount as described in clause P-041 of the Purchaser’s contract prior to log delivery and at a date to be determined by the State.

**Bidder’s Warranty and Bid Signature**

*By signing and submitting this bid as offer to purchase forest products from the State, the Bidder hereby warrants to the State that they have had an opportunity to fully inspect the sale area and the forest products being sold. Bidder further warrants to the State that they enter this bid based solely upon their own judgment of the value of the forest products, formed after their own examination and inspection of both the timber sale area and the forest products being sold. Bidder also warrants to the State that they enter this bid without any reliance upon the volume estimates, acreage estimates, appraisals, pre-bid documentation, or any other representation by the State Department of Natural Resources.*

\_\_\_\_\_  
(Signature of Authorized Representative submitting this bid)

\_\_\_\_\_  
(Date of Signature)

\_\_\_\_\_  
(Print name and title of Authorized Representative submitting this bid)

**NOTES:** A separate bid form is required for each log sort bid and must be delivered in a separate envelope. Photocopies of this bid form may be used. Each photocopy must have original signatures. Final contract award is contingent upon the State’s haul cost analysis. Actual haul route may vary and is subject to change at the State’s discretion. All sales are subject to confirmation by the Commissioner of Public Lands as per RCW 79.15.100.

## LOG SORT SEALED BID SUPPLEMENTAL INFORMATION FORM

\_\_\_\_\_  
(Print Company Name)

\_\_\_\_\_  
(Sale Name)

\_\_\_\_\_  
(Agreement Number)

\_\_\_\_\_  
(Sort Number)

\_\_\_\_\_  
(email: optional for DNR production report distribution)

### **Log Manufacturing Specifications:**

**Sawlog and Peeler sorts:** Enter at least one preferred log length including trim for each log length range below.

**Pole sorts (Distribution):** Enter three or more lengths. Attach preferred manufacturing information.

**Pole sorts (Transmission):** Enter six or more lengths. Attach preferred manufacturing information.

**Tonnage sorts:** See bid form instructions for required log lengths. Enter additional custom lengths as desired.

Log Length Ranges	Bidder's Preferred Log Lengths
16 ft. through 20 ft.	
22 ft. through 30 ft.	
32 ft. through 40 ft.	
Distribution Poles – 35 ft. through 55 ft.	
Transmission Poles – 60 ft.+	

### **Log Delivery Information:**

**1) Designate the point of delivery and address (must be a street address)**

\_\_\_\_\_  
(Location Name)

\_\_\_\_\_  
(Street Address)

\_\_\_\_\_  
(City, State and Zip)

**2) Designate the state approved Scaling and Weighing facilities closest to the point of delivery as needed. Scaling**

**Location Information**

\_\_\_\_\_  
(Scaling Location Name)

\_\_\_\_\_  
(Third Party Scaling Organization)

\_\_\_\_\_  
(Scaling Location Street Address)

\_\_\_\_\_  
(Scaling Location City, State and Zip)

**Weighing Location Information**

\_\_\_\_\_  
(Weighing Location Name)

\_\_\_\_\_  
(Weighing Location Owner)

\_\_\_\_\_  
(Weighing Location Street Address)

\_\_\_\_\_  
(Weighing Location City, State and Zip)

**Final contract award is contingent upon the State's haul cost analysis. Actual haul route may vary and is subject to change at the State's discretion. Additional terms or conditions requested by the bidder on or attached to the Log Sort Sealed Bid or Supplemental Information Forms are informational only and non-binding.**

## **Instructions for Completing the Log Sort Sealed Bid and Supplemental Information Forms.**

All bids submitted for the purchase of forest products being sold by the Washington State Department of Natural Resources must have an original signature on behalf of the person or entity submitting the bid, and must be on the form(s) provided in this booklet or a photocopy thereof. The DNR will not accept bids that are not signed, and will not accept bids that are not on the current, approved bid form. All appropriate blanks including Agreement Number, Sort Number, Bid amount (per mbf or ton as appropriate for the sort), Bid deposit amount and type. Signatures and date on bid form must be completed including the bid bond number if bidder is relying upon a bid bond for bid deposit.

Bids shall not be accepted if a completed ‘**Log Sort Sealed Bid Supplemental Information Form**’ is not included with the approved ‘**Log Sort Sealed Bid Form**’.

**Required log lengths for tonnage sorts:** Preferred log lengths for tonnage sawlog sorts shall include the following plus any additional lengths identified on the Bid Supplemental Information form:

<b>Species Type</b>	<b>Preferred Lengths</b>
Conifer Sorts	16’, 20’, 24’, 26’, 32’, 40’
Hardwood Sorts	18’, 20’, 26’, 28’, 30’, 36’, 38’, 40’

For more specific information, contact the appropriate region office.

### **In-Person Bids**

- A. Sealed bids must be in auction box or auction envelope before 10:00 a.m. on the day of sale at the location specified in the notice of sale.
- B. Sealed bids must be submitted in an envelope with the name of the sale, the bidder’s name and the contract agreement number clearly written on the outside of the envelope. The full legal name and business address of the bidder must be inserted where indicated on the form, and must be the same as the name on the bid bond and timber sale contract. The bid form must be signed by an authorized person. When a bidder has more than one person authorized to bid, then documentation of those persons with signature authority for bidding must accompany the bid or be on file at the region office. Sealed bid envelopes are available at all region offices. One bid per envelope.
- C. Sealed bid envelopes must contain the following:
  1. A completed ‘**Log Sort Sealed Bid Form**’;
  2. A completed ‘**Supplemental Information Form**’ and;
  3. A bid deposit

### **Mailed Bids**

- A. Mail-in bid envelopes are required to have printed on the outside: “DO NOT OPEN UNTIL SALE DATE. SEALED BID ENCLOSED.” The sealed bid envelope(s) will be enclosed inside the mailed-in envelope. Mailed bids must be submitted in an envelope with the name of the sale, the bidder’s name and the agreement number clearly written on the outside of the envelope. The full legal name and business address of the bidder must be inserted where indicated on the form, and must be the same on the bid bond and timber sale contract. The bid form must be signed by an authorized person. When a bidder has more than one person authorized to bid, then documentation of those persons with signature authority for bidding must accompany the bid or be on file at the region office. Mail-in envelopes are available at all region offices. One bid per mailed-in envelope.
- B. Mail-in or otherwise delivered bids will be accepted up to 4:30 p.m. the last business day before the auction by the region office in which the sale is located. Bidders assume the risk for the method of delivery they chose. The DNR assumes no responsibility for any delays caused by any delivery service.
- C. Sealed bid envelopes must contain the following:
  1. A completed ‘**Log Sort Sealed Bid Form**’;
  2. A completed ‘**Log Sort Sealed Bid Supplemental Information Form**’ and;
  3. A bid deposit





# Department of Natural Resources Region Offices

**Olympia Headquarters**  
 1111 Washington St SE  
 MS 47000  
 Olympia, WA 98504-7000  
 (360) 902-1000  
[www.dnr.wa.gov](http://www.dnr.wa.gov)

**Product Sales & Leasing Division**

1111 Washington St SE  
 MS 47014  
 Olympia, WA 98504-7014  
 (360) 902-1600

**South Puget Sound Region**  
 950 Fairman Ave N  
 Enumclaw, WA 98022-9282  
 (360) 825-1631

**Pacific Cascade Region**

601 Bond Road  
 PO Box 280  
 Castle Rock, WA 98611-0280  
 (360) 577-2025

**Southeast Region**

713 Bowers Road  
 Ellensburg, WA 98926-9301  
 (509) 925-8510

**Northwest Region**

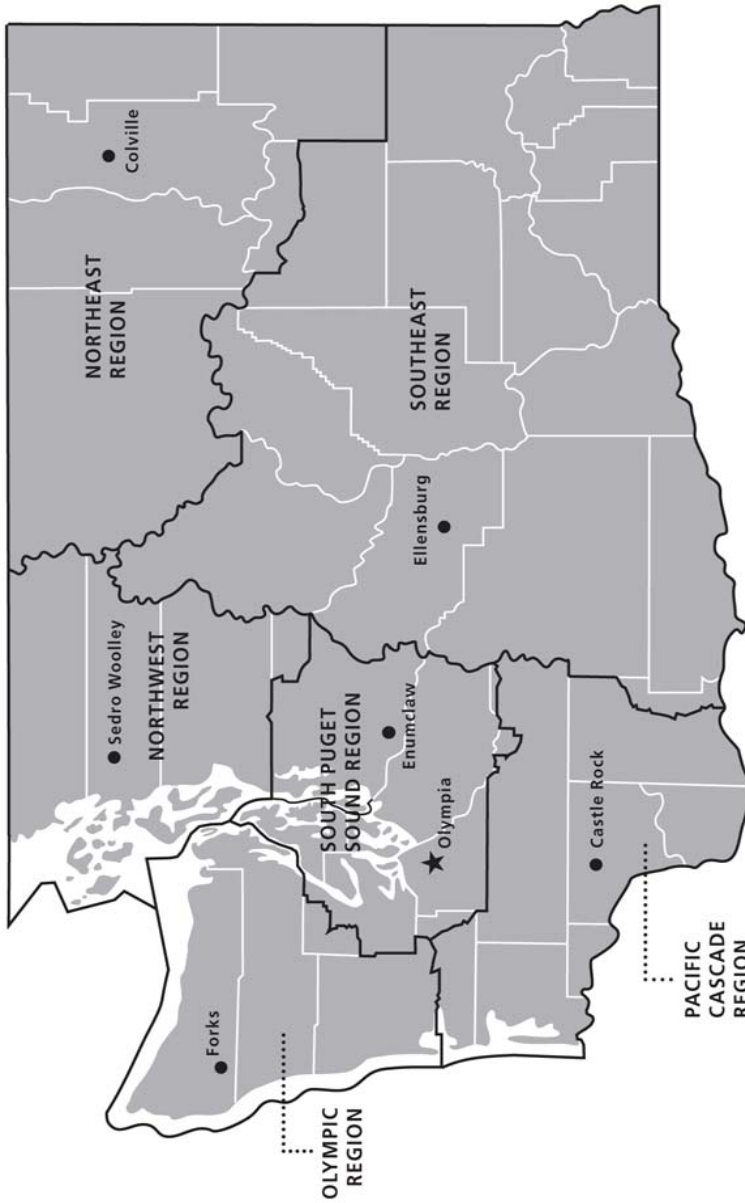
919 N Township St  
 Sedro Woolley,  
 WA 98284-9384  
 (360) 856-3500

**Olympic Region**





411 Tillicum Lane  
 Forks, WA 98331-9271  
 (360) 374-2800

**Northeast Region**

225 S Silke Road  
 PO Box 190  
 Colville, WA 99114-0190  
 (509) 684-7474



**DNR REGIONS**

-  DNR Region Boundaries
-  County Boundaries
-  DNR Region Office
-  Olympia Headquarters



WASHINGTON STATE DEPT OF  
**NATURAL RESOURCES**



For more information about how public lands are managed visit DNR's web page at [www.dnr.wa.gov](http://www.dnr.wa.gov)

Fire, Burn Ban Information and Region Offices  
 Toll Free: 1-800-527-3305 General TTY: 7-1-1





WASHINGTON STATE DEPT OF  
**NATURAL  
RESOURCES**

1111 WASHINGTON ST SE  
MS 47014  
OLYMPIA WA 98504-7014

[www.dnr.wa.gov](http://www.dnr.wa.gov)

For alternate formats  
of this document,  
Call (360) 902-1000  
TRS: 7-1-1

PRINTED IN THE USA ON RECYCLED PAPER

