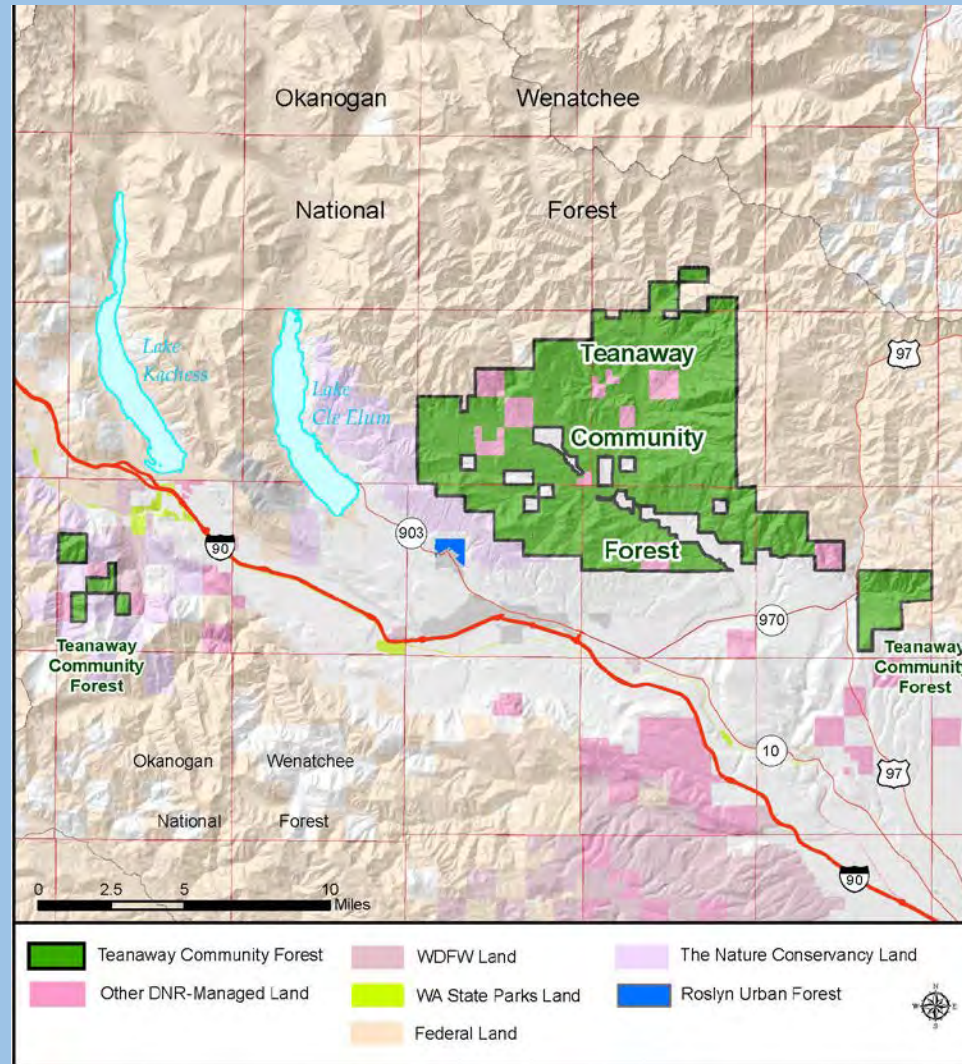


Teanaway Community Forest Recreation Plan Recreation Land Suitability



TEANAWAY COMMUNITY FOREST RECREATION PLAN

Planning Area Map



Recreation Land Suitability

Identify and map areas with long- term limiting factors that affect recreation planning

Biological Criteria

Soils & Geologic Criteria

Management Criteria

Overview

- 1) *Summary of local geology*
- 2) *Review soils and geology criteria individually*
- 3) *Suitability matrix*
- 4) *Composites of information by type*

Terms for Soils and Geology Suitability

Low Suitability = Areas with long-term considerations. These primarily include areas with higher potential for landslides, erosion or poorly drained soils

Moderate Suitability = These primarily include deep-seated landslides and areas where less mitigation and potential for impact exists compared to low suitability

Soils and Geology Criteria

- *Soils Risk for Recreation (Erosion)*
- *Areas with High Potential for Landslides/Unstable Slopes*
- *Slope Percentage*
- *100 – Year Flood Plains*
- *Poorly Drained Soils*
- *Areas with High Potential for Avalanche (Cabin Creek)*
- *Areas that have Moved in Previous Landslides*

**These project-scale considerations are not intended to replace site specific project analysis. This list is based on information available to date.*

TEANAWAY COMMUNITY FOREST RECREATION PLAN

Teanaway Recreation Plan - Soils and Geology Suitability Matrix

SOILS AND GEOLOGY CRITERIA - LONG TERM CONSIDERATIONS

	Non-Motorized Trails	Motorized Trails	Facilities
Soils Risk for Recreation (Erosion)	Moderate Suitability - Risk Value 5-9 Low Suitability - Risk Value 10-12	Moderate Suitability - Risk Value 5-9 Low Suitability - Risk Value 10-12	Moderate Suitability - Risk Value 5-9 Low Suitability - Risk Value 10-12
Areas with High Potential for Landslides/Unstable Slopes	Low Suitability*	Low Suitability*	Low Suitability*
Slope Percentage	Low Suitability in areas >75% slope Moderate Suitability in areas 55% - 75% slope	Low Suitability in areas >75% slope Moderate Suitability in areas 55% - 75% slope	Low Suitability in areas >30% slope Moderate Suitability in areas 15% - 30% slope
100 - Year Flood Plains	Low Suitability	Low Suitability	Low Suitability
Poorly Drained Soils	Low Suitability	Low Suitability	Low Suitability
Areas with High Potential for Avalanche (Cabin Creek)	Low Suitability	Low Suitability	Low Suitability
Areas that have Moved in Previous Landslides	Moderate Suitability	Moderate Suitability	Low Suitability
Definitions			*Requires case by case consideration
Low Suitability = Areas with long-term limiting factors. These primarily include areas with potential for mass wasting, erosion, slope instability, or poorly drained soils			
Moderate Suitability = Areas where less mitigation and potential for impact exists compared to low suitability			

TEANAWAY COMMUNITY FOREST RECREATION PLAN

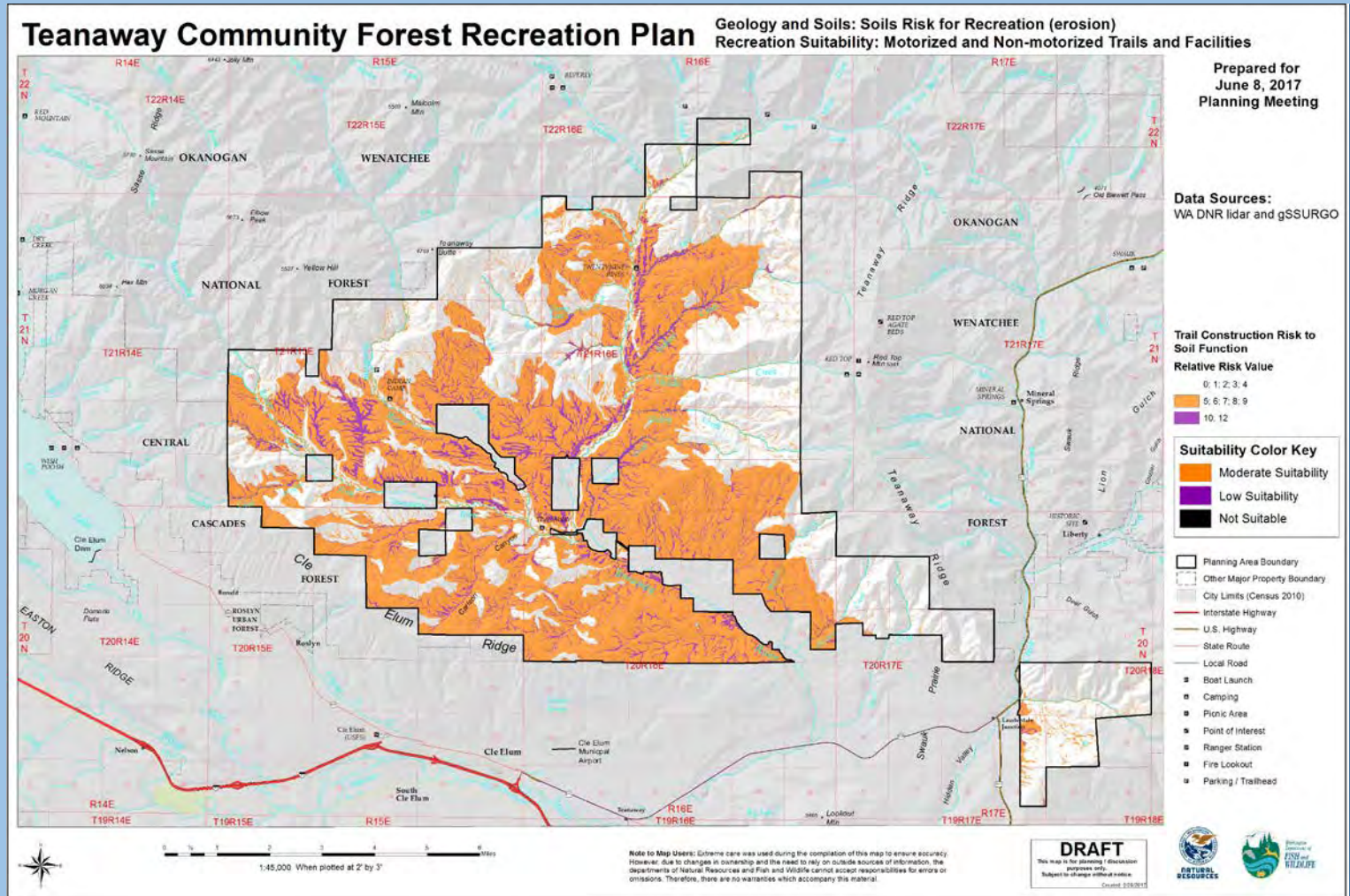
Soils Risk for Recreation (Erosion)



TEANAWAY COMMUNITY FOREST RECREATION PLAN

Soils Risk for Recreation (Erosion):

Trails and Facilities

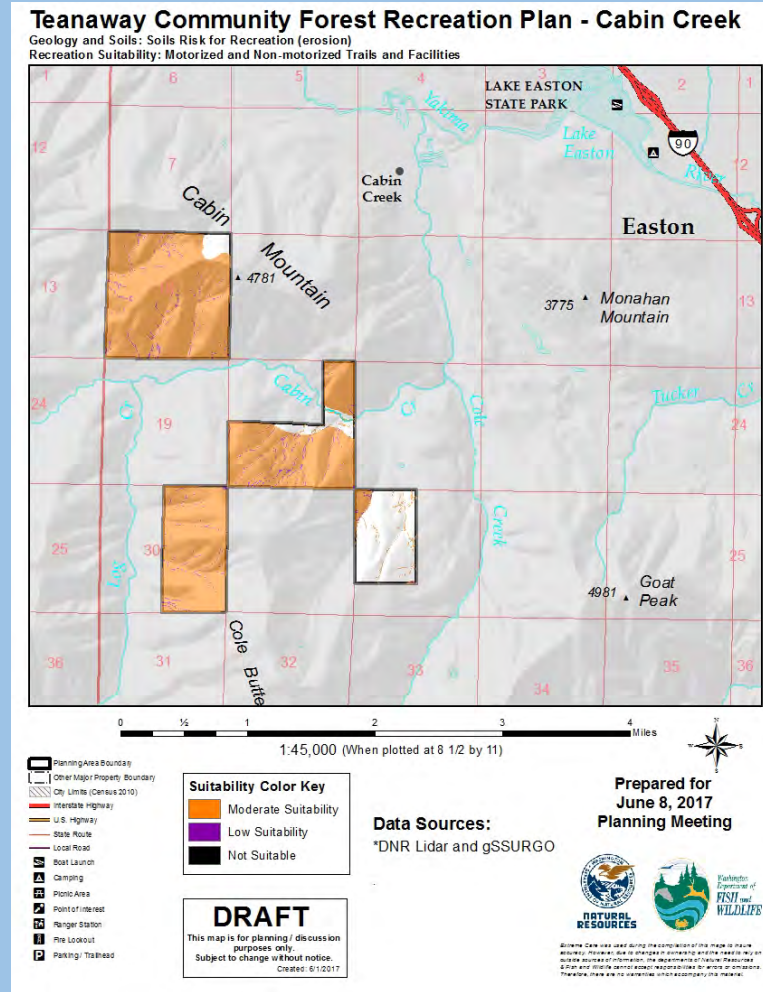


TEANAWAY COMMUNITY FOREST RECREATION PLAN

Soils Risk for
Recreation
(Erosion):

Cabin Creek

Trails and Facilities



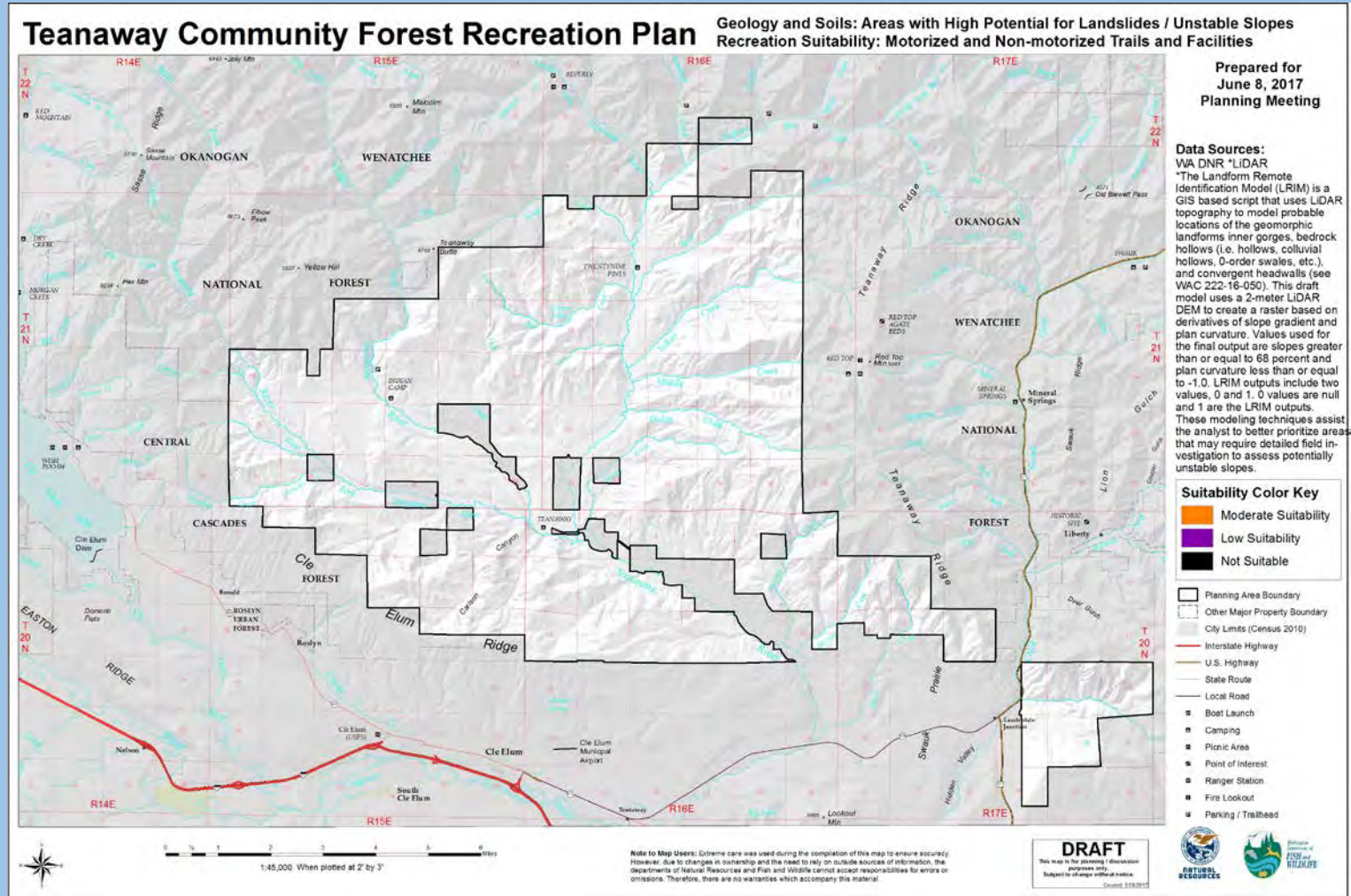
TEANAWAY COMMUNITY FOREST RECREATION PLAN

Areas with High Potential for Landslides/Unstable Slopes



TEANAWAY COMMUNITY FOREST RECREATION PLAN

Areas with High Potential for Landslides Unstable Slopes:
Trails and Facilities



TEANAWAY COMMUNITY FOREST RECREATION PLAN

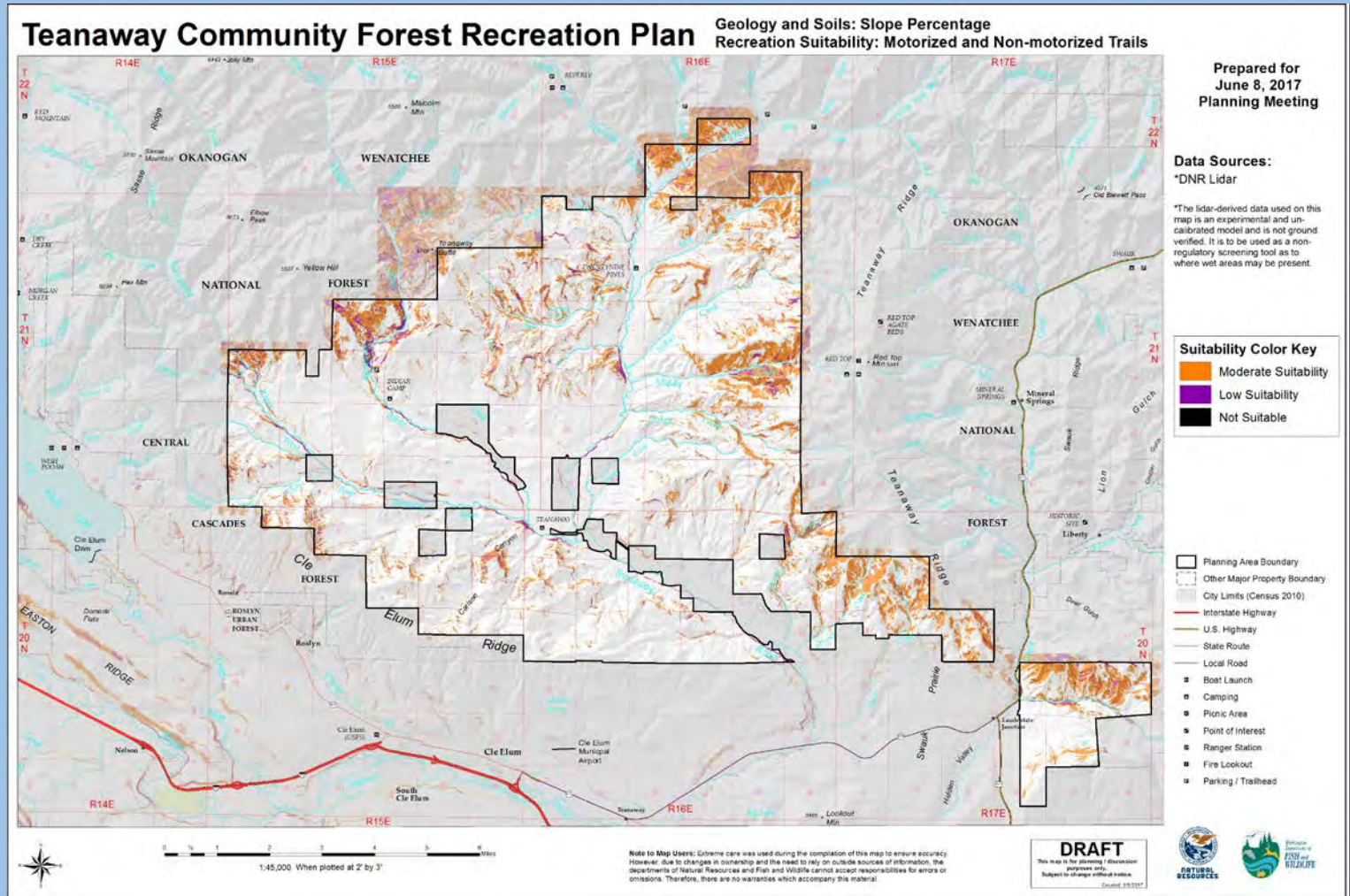
Slope Percentage



TEANAWAY COMMUNITY FOREST RECREATION PLAN

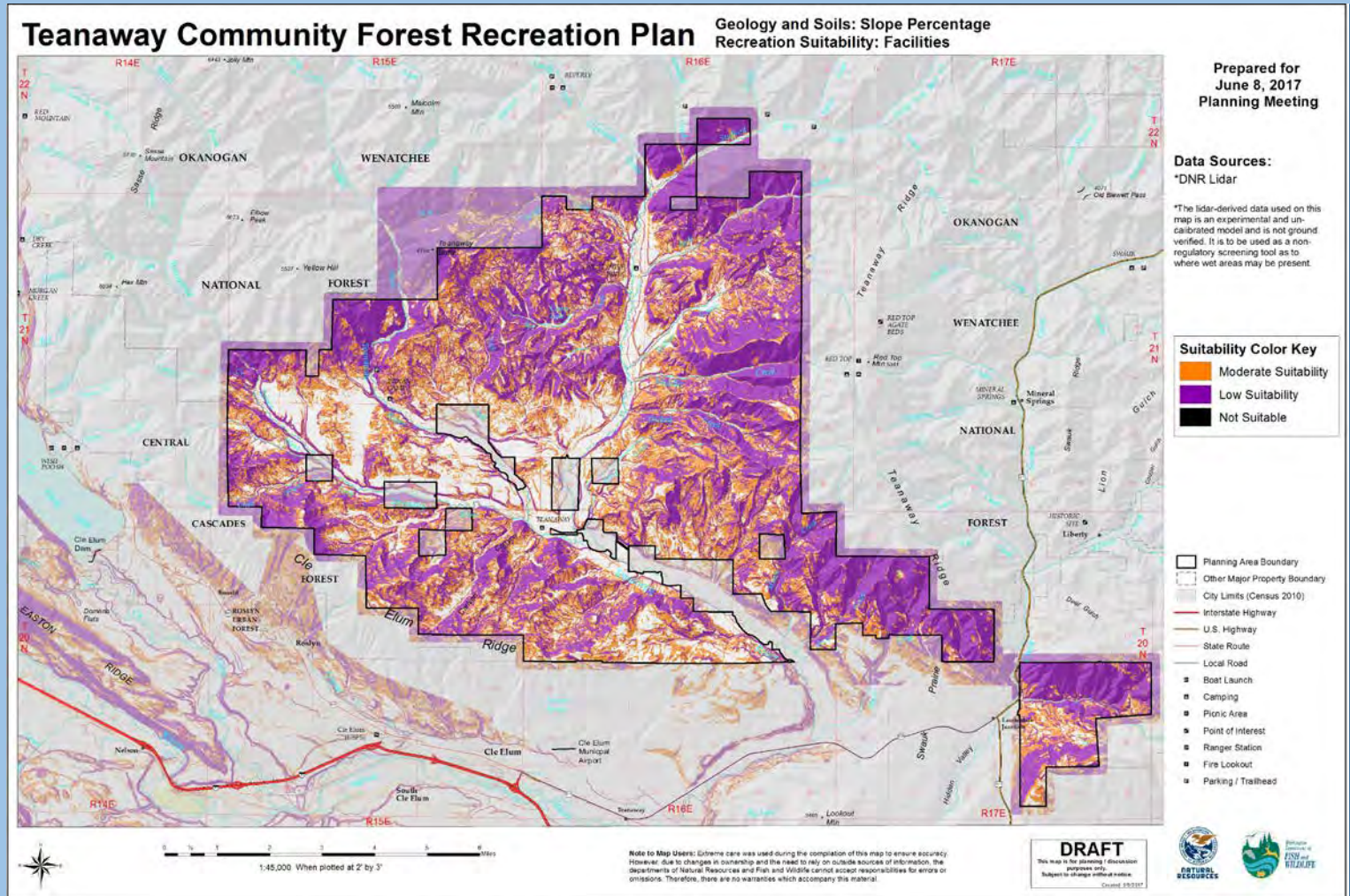
Slope
Percentage:

Trails



TEANAWAY COMMUNITY FOREST RECREATION PLAN

Slope
Percentage:
Facilities



TEANAWAY COMMUNITY FOREST RECREATION PLAN

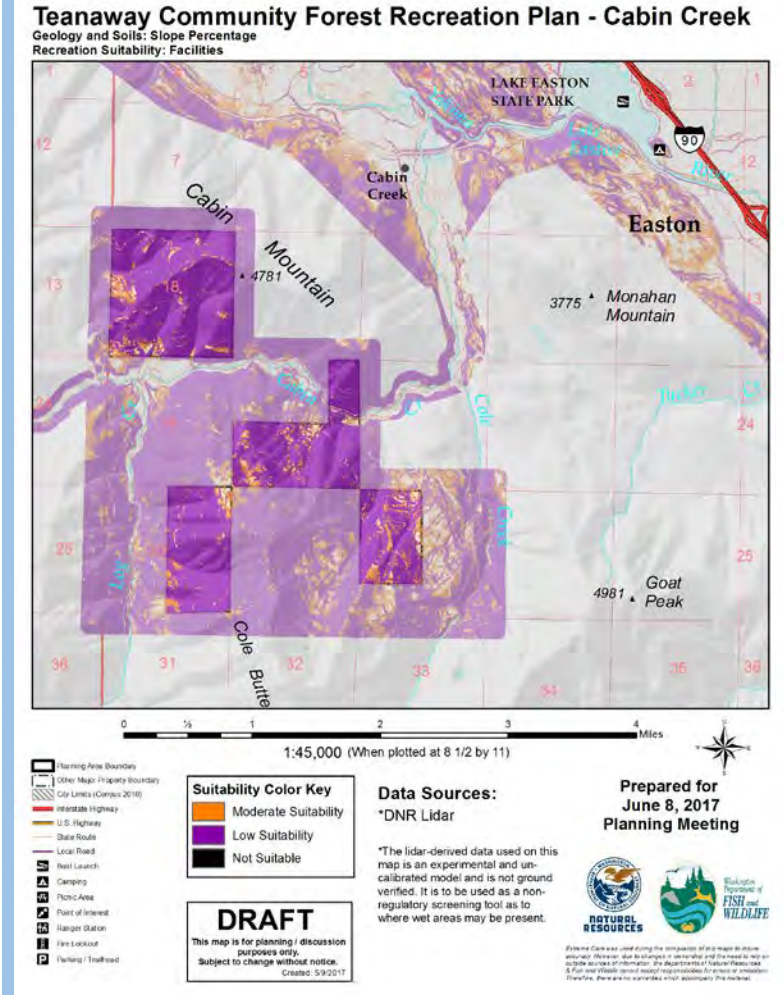
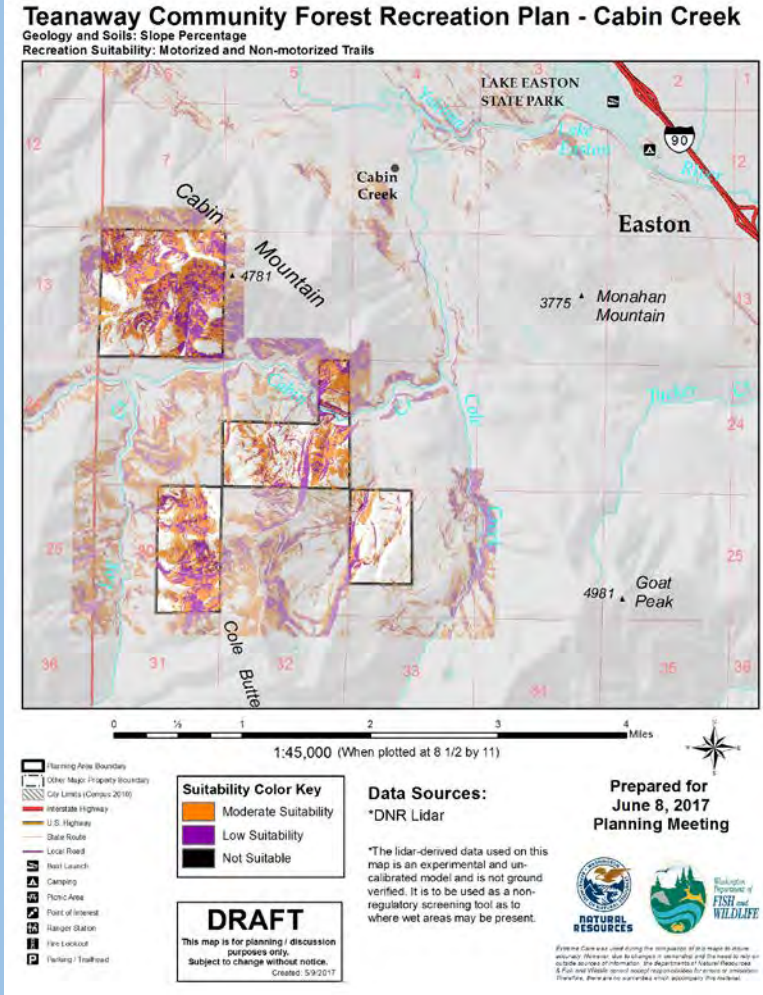
Trails

Facilities

Slope

Percentage:

Cabin Creek



TEANAWAY COMMUNITY FOREST RECREATION PLAN

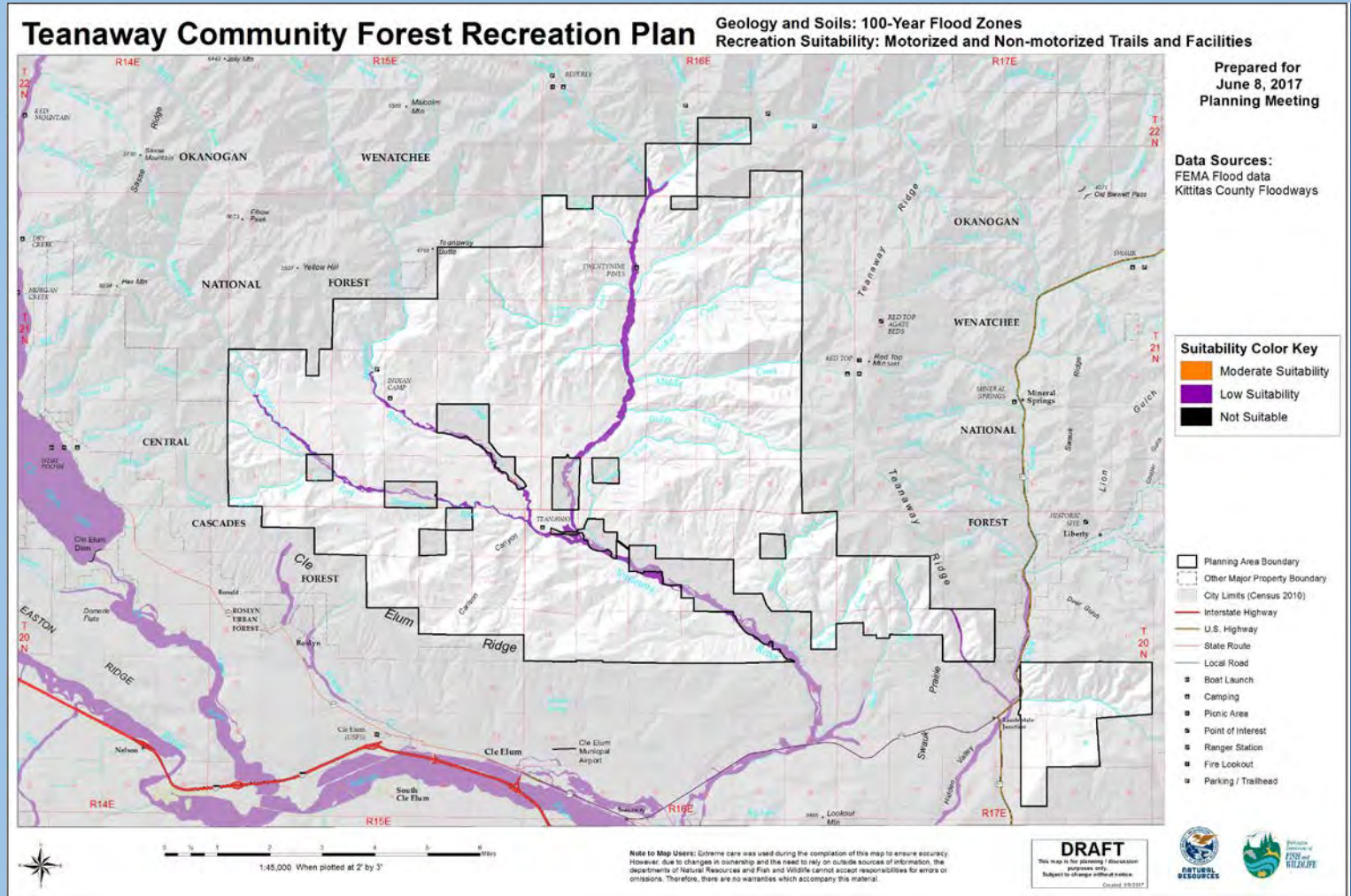
100 – Year Flood Plains



TEANAWAY COMMUNITY FOREST RECREATION PLAN

100-Year
Flood Plains:

Trails and
Facilities

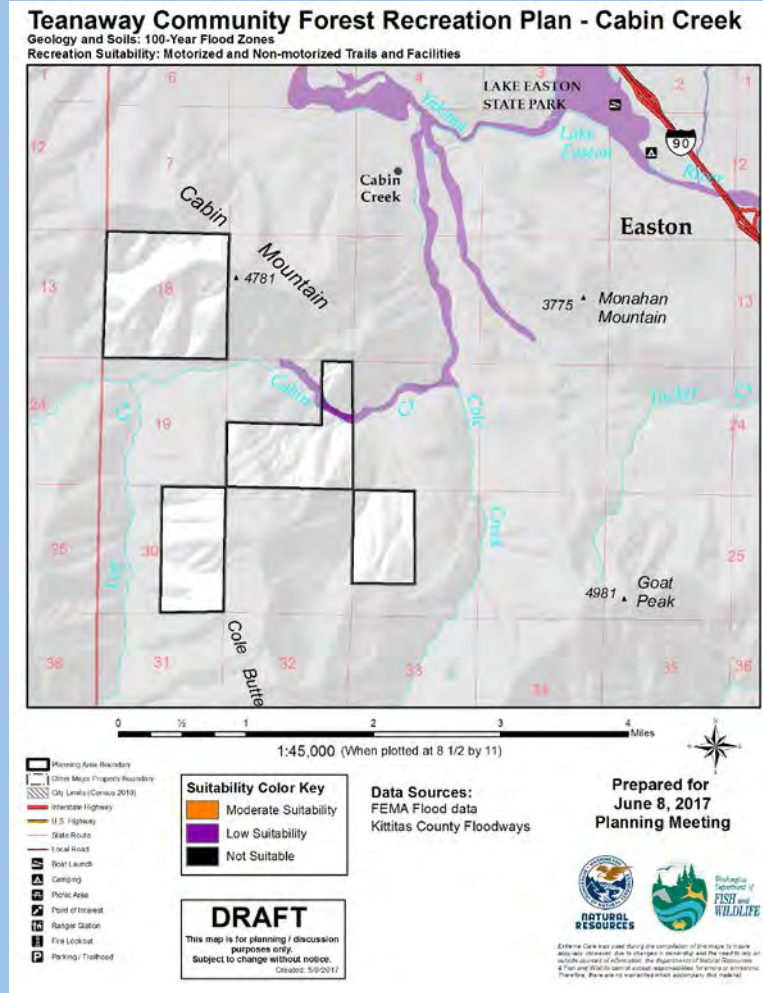


TEANAWAY COMMUNITY FOREST RECREATION PLAN

100-Year Flood
Plains:

Cabin Creek

Trails and Facilities



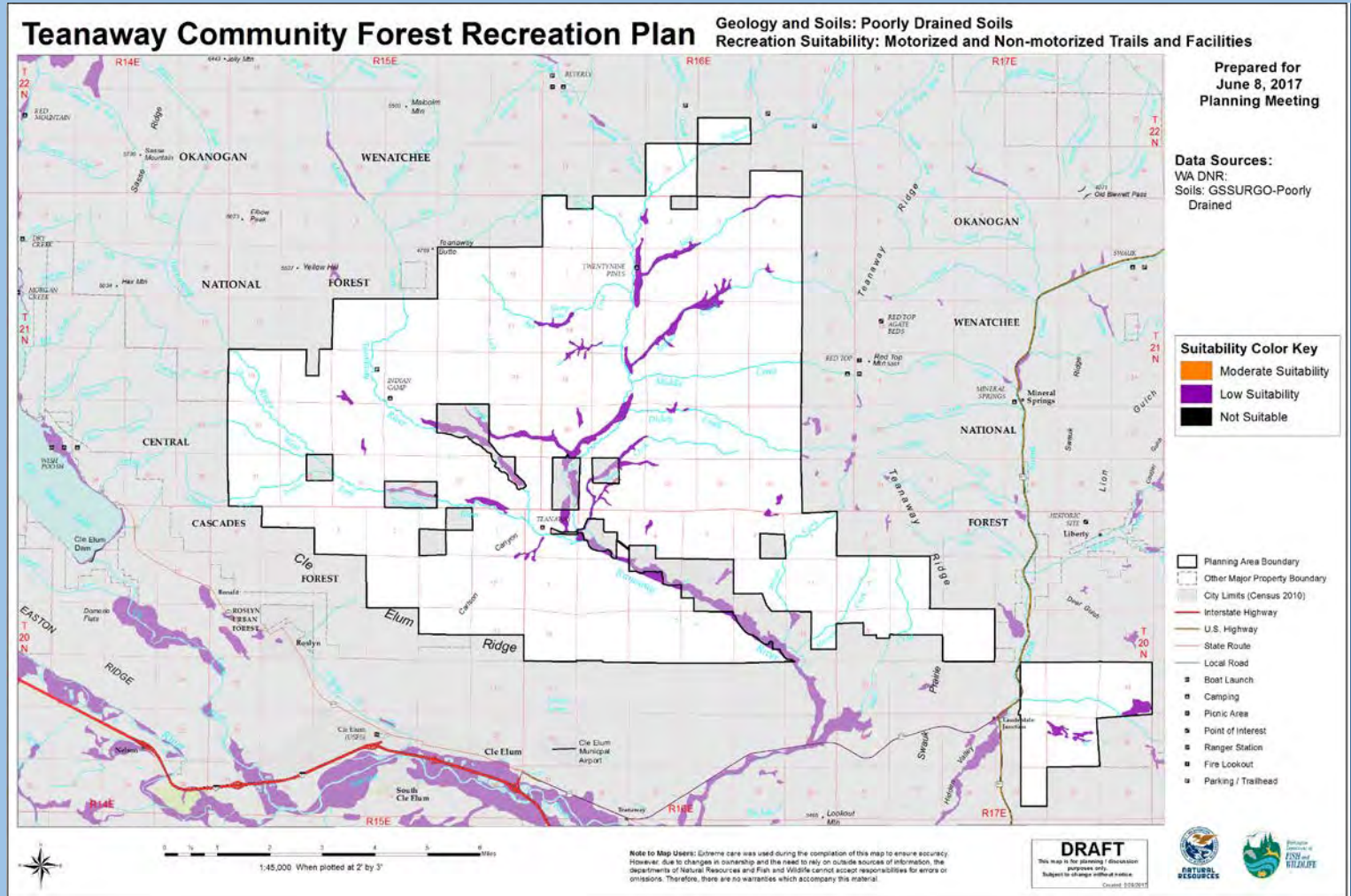
TEANAWAY COMMUNITY FOREST RECREATION PLAN

Poorly Drained Soils



TEANAWAY COMMUNITY FOREST RECREATION PLAN

Poorly
Drained Soils:
Trails and
Facilities

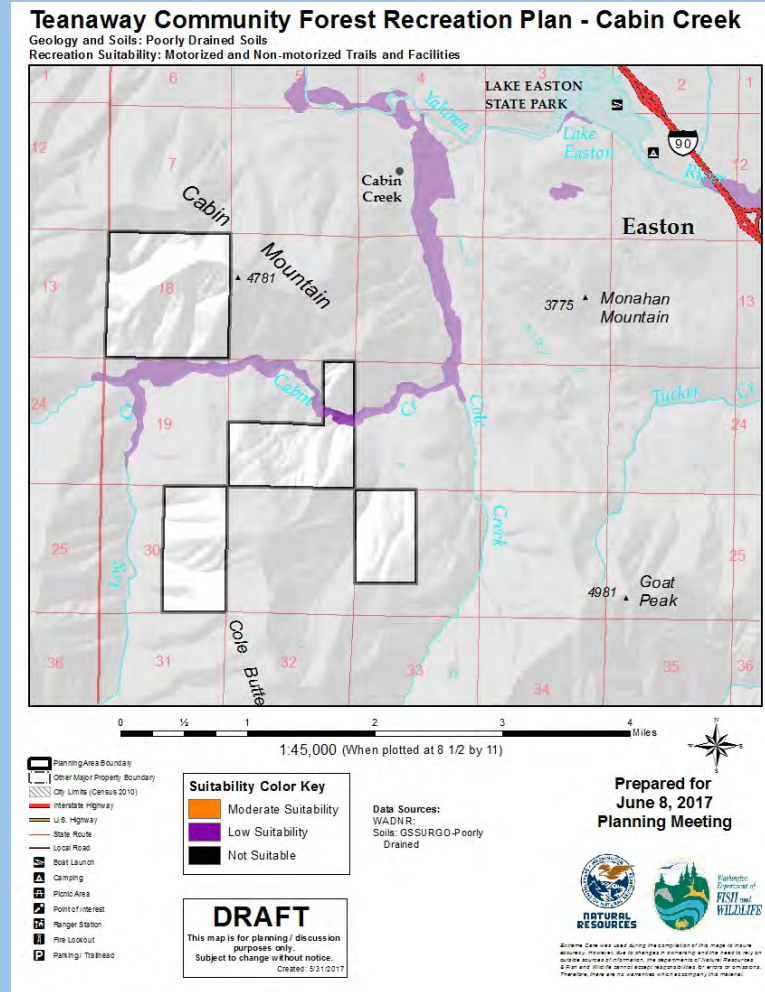


TEANAWAY COMMUNITY FOREST RECREATION PLAN

Trails and Facilities

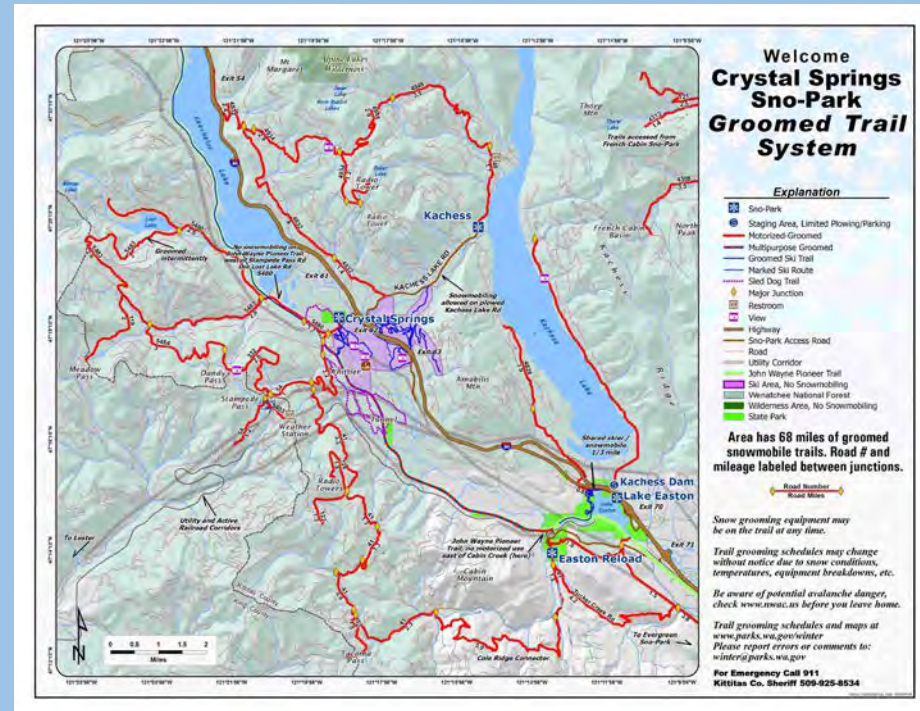
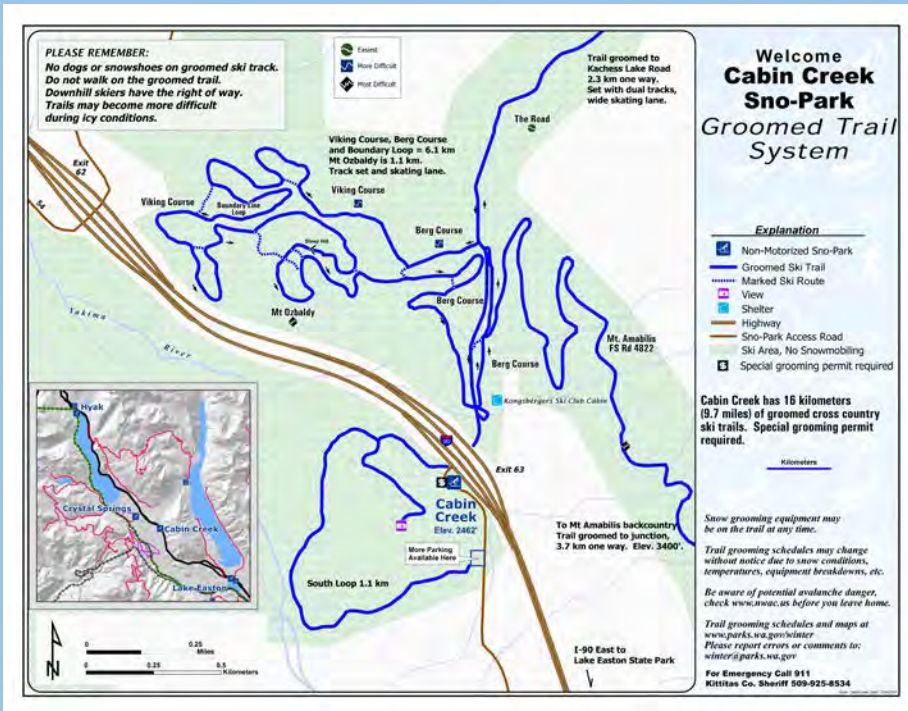
Poorly Drained
Soils:

Cabin Creek



TEANAWAY COMMUNITY FOREST RECREATION PLAN

Areas with High Potential for Avalanche (Cabin Creek)



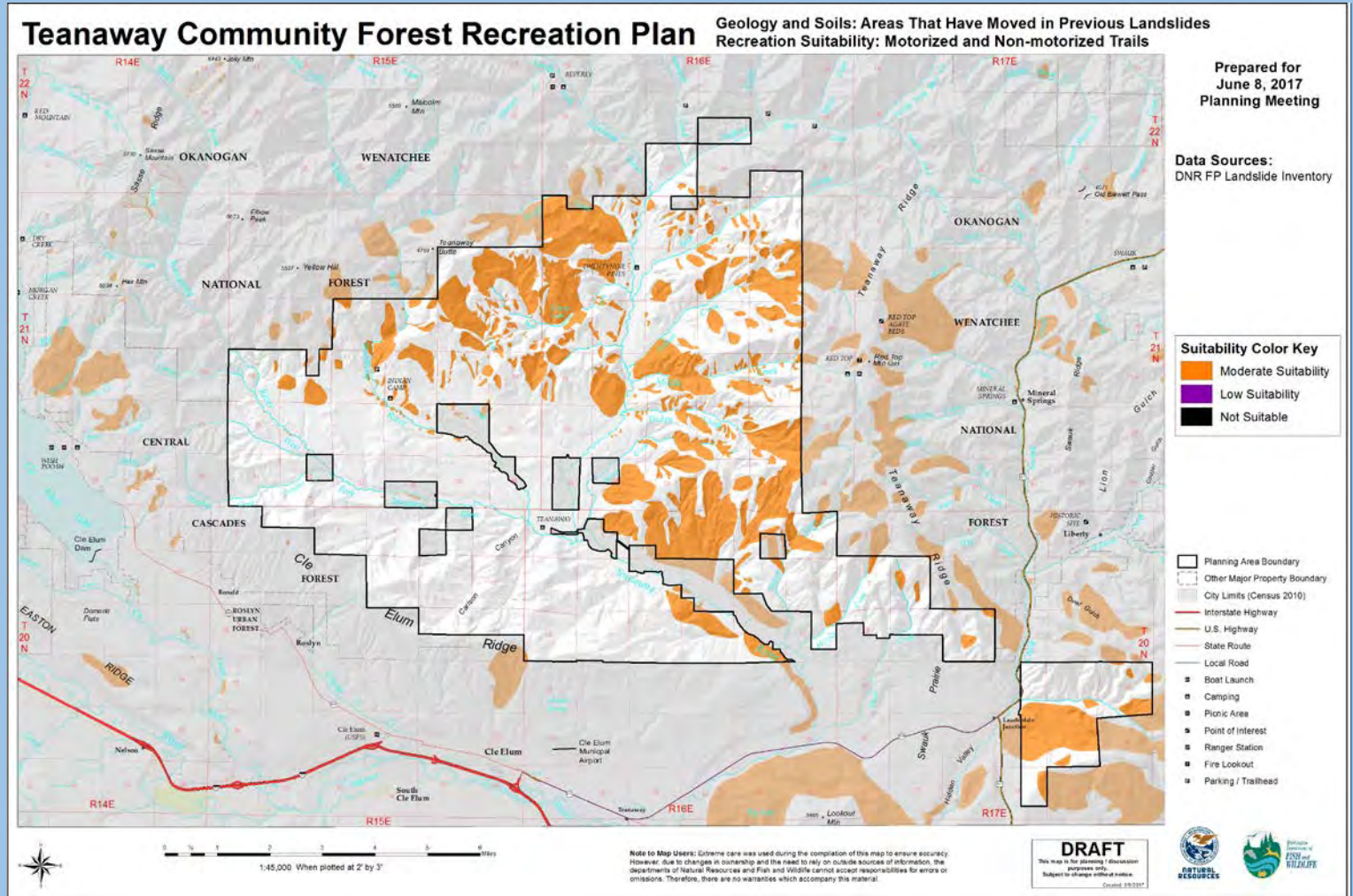
TEANAWAY COMMUNITY FOREST RECREATION PLAN

Areas that have moved in Previous Landslides



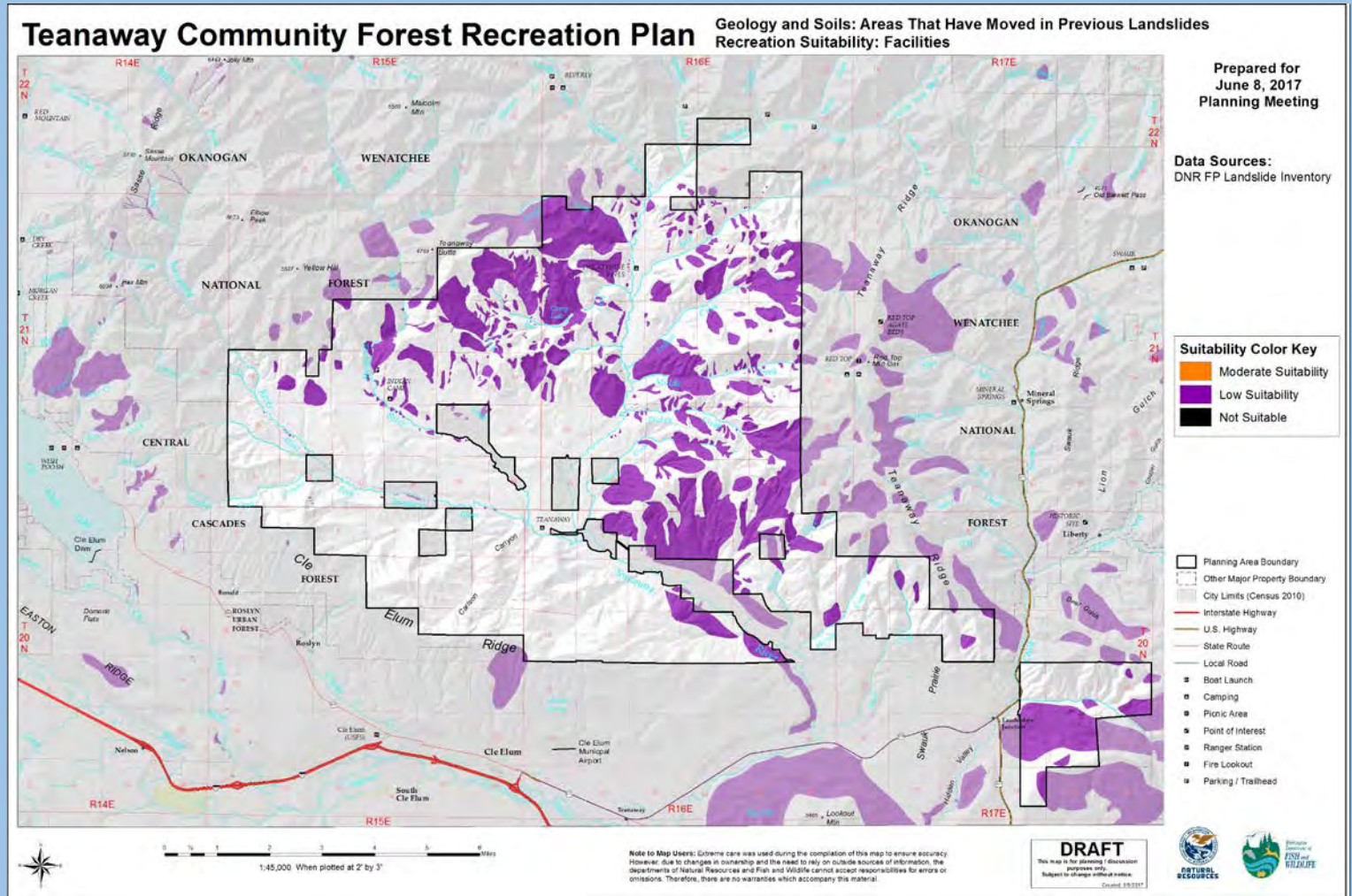
TEANAWAY COMMUNITY FOREST RECREATION PLAN

Areas that have moved in Previous Landslides:
Trails



TEANAWAY COMMUNITY FOREST RECREATION PLAN

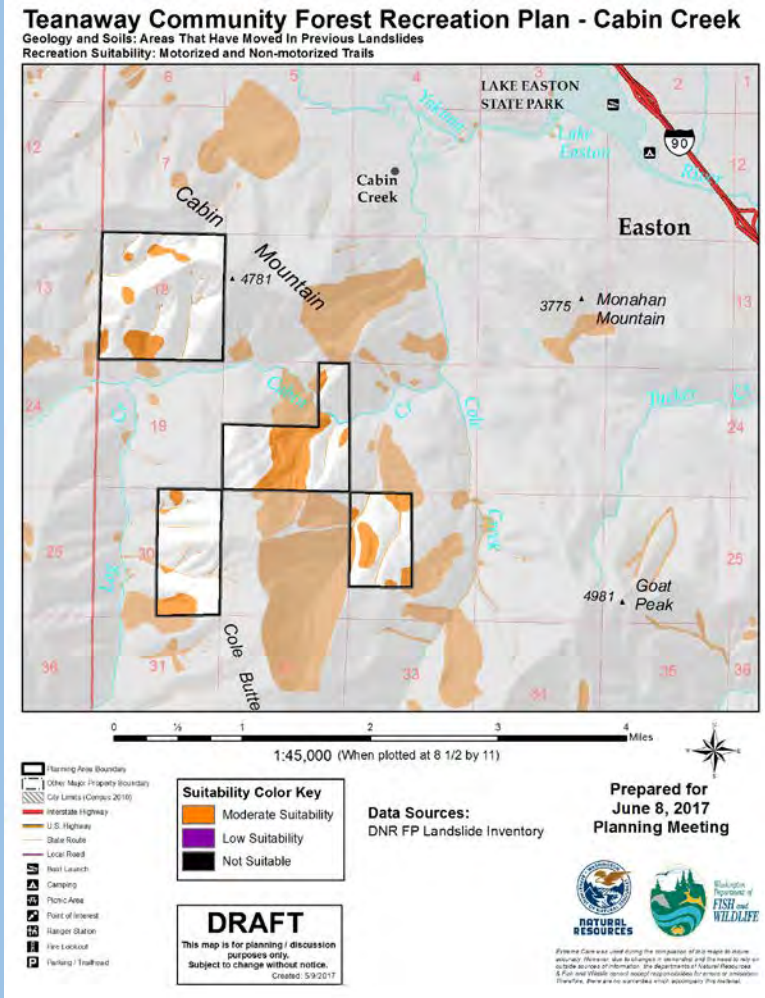
Areas that have Moved in Previous Landslides:
Facilities



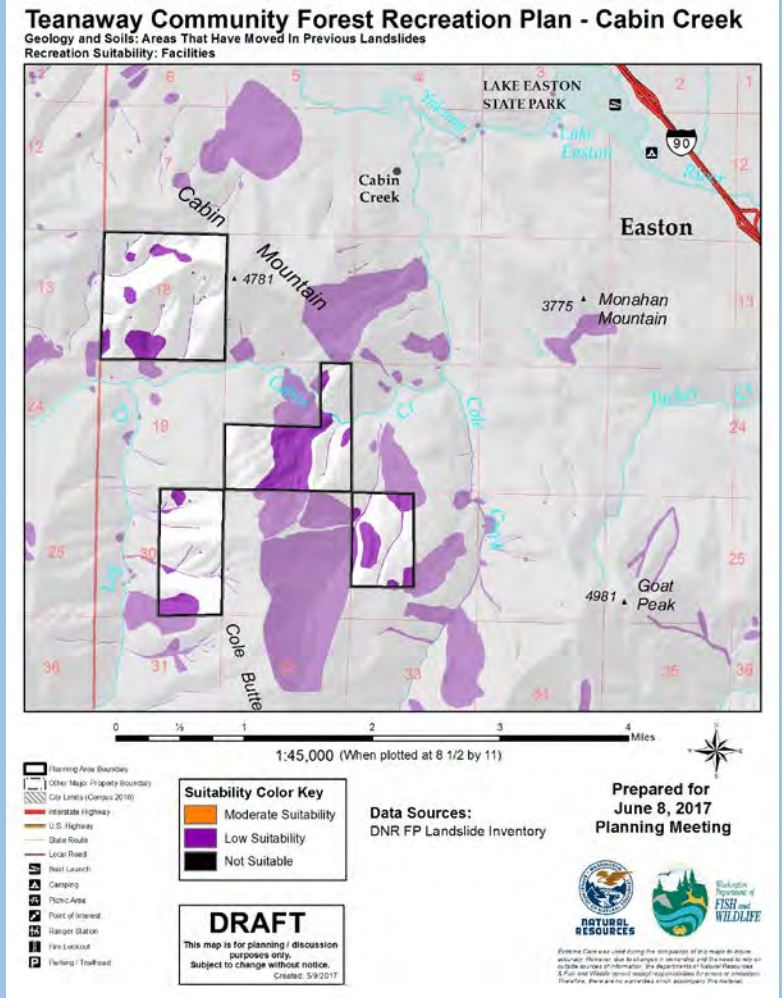
TEANAWAY COMMUNITY FOREST RECREATION PLAN

Areas that have
Moved in
Previous
Landslides:
Cabin Creek

Trails



Facilities



TEANAWAY COMMUNITY FOREST RECREATION PLAN

Teanaway Recreation Plan - Soils and Geology Suitability Matrix

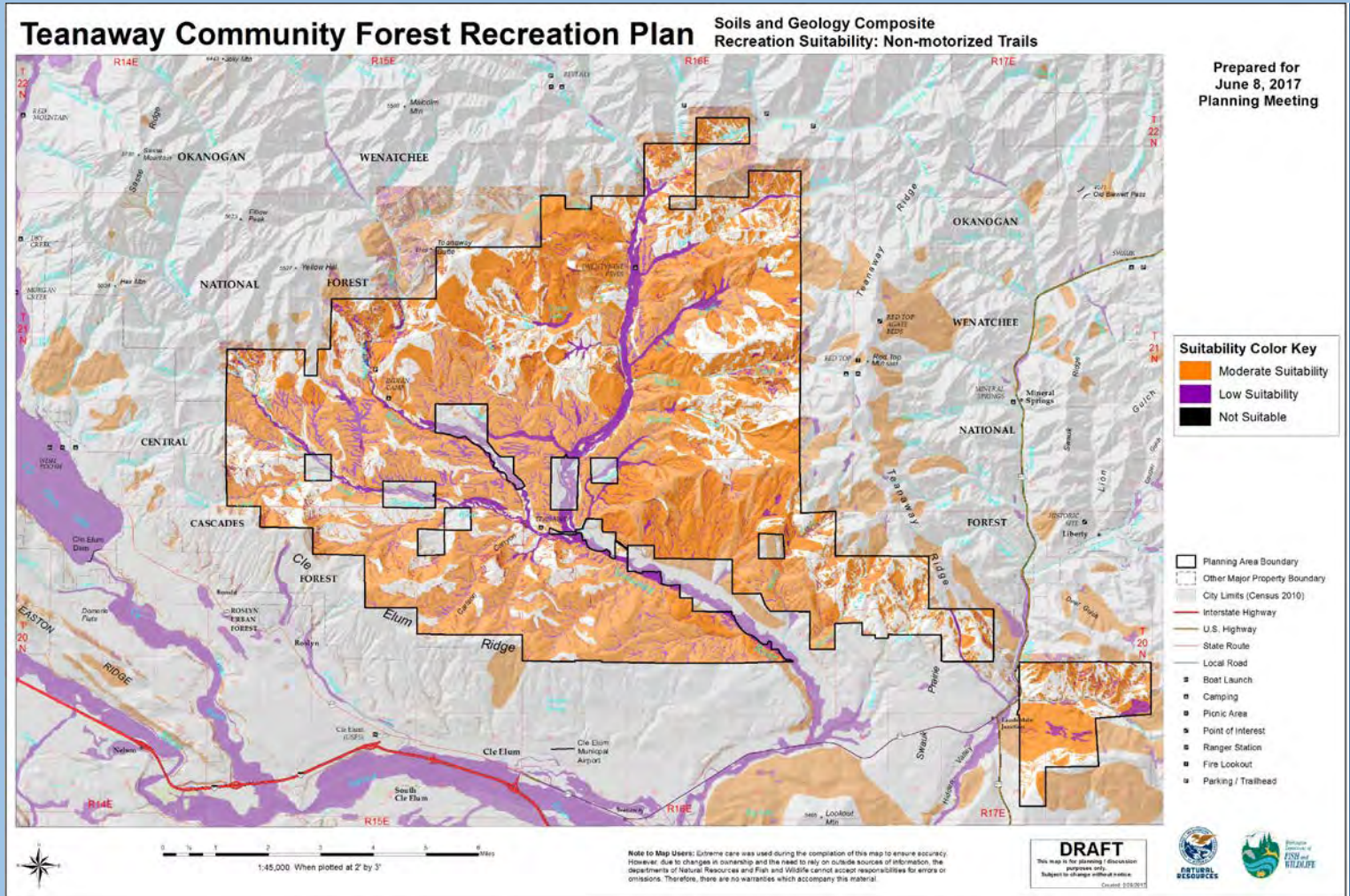
SOILS AND GEOLOGY CRITERIA - LONG TERM CONSIDERATIONS

	Non-Motorized Trails	Motorized Trails	Facilities
Soils Risk for Recreation (Erosion)	Moderate Suitability - Risk Value 5-9 Low Suitability - Risk Value 10-12	Moderate Suitability - Risk Value 5-9 Low Suitability - Risk Value 10-12	Moderate Suitability - Risk Value 5-9 Low Suitability - Risk Value 10-12
Areas with High Potential for Landslides/Unstable Slopes	Low Suitability*	Low Suitability*	Low Suitability*
Slope Percentage	Low Suitability in areas >75% slope Moderate Suitability in areas 55% - 75% slope	Low Suitability in areas >75% slope Moderate Suitability in areas 55% - 75% slope	Low Suitability in areas >30% slope Moderate Suitability in areas 15% - 30% slope
100 - Year Flood Plains	Low Suitability	Low Suitability	Low Suitability
Poorly Drained Soils	Low Suitability	Low Suitability	Low Suitability
Areas with High Potential for Avalanche (Cabin Creek)	Low Suitability	Low Suitability	Low Suitability
Areas that have Moved in Previous Landslides	Moderate Suitability	Moderate Suitability	Low Suitability
Definitions			*Requires case by case consideration
Low Suitability = Areas with long-term limiting factors. These primarily include areas with potential for mass wasting, erosion, slope instability, or poorly drained soils			
Moderate Suitability = Areas where less mitigation and potential for impact exists compared to low suitability			

TEANAWAY COMMUNITY FOREST RECREATION PLAN

Soils Geology
Composite
Recreation
Suitability:

Non-
motorized
Trails



Teanaway Community Forest

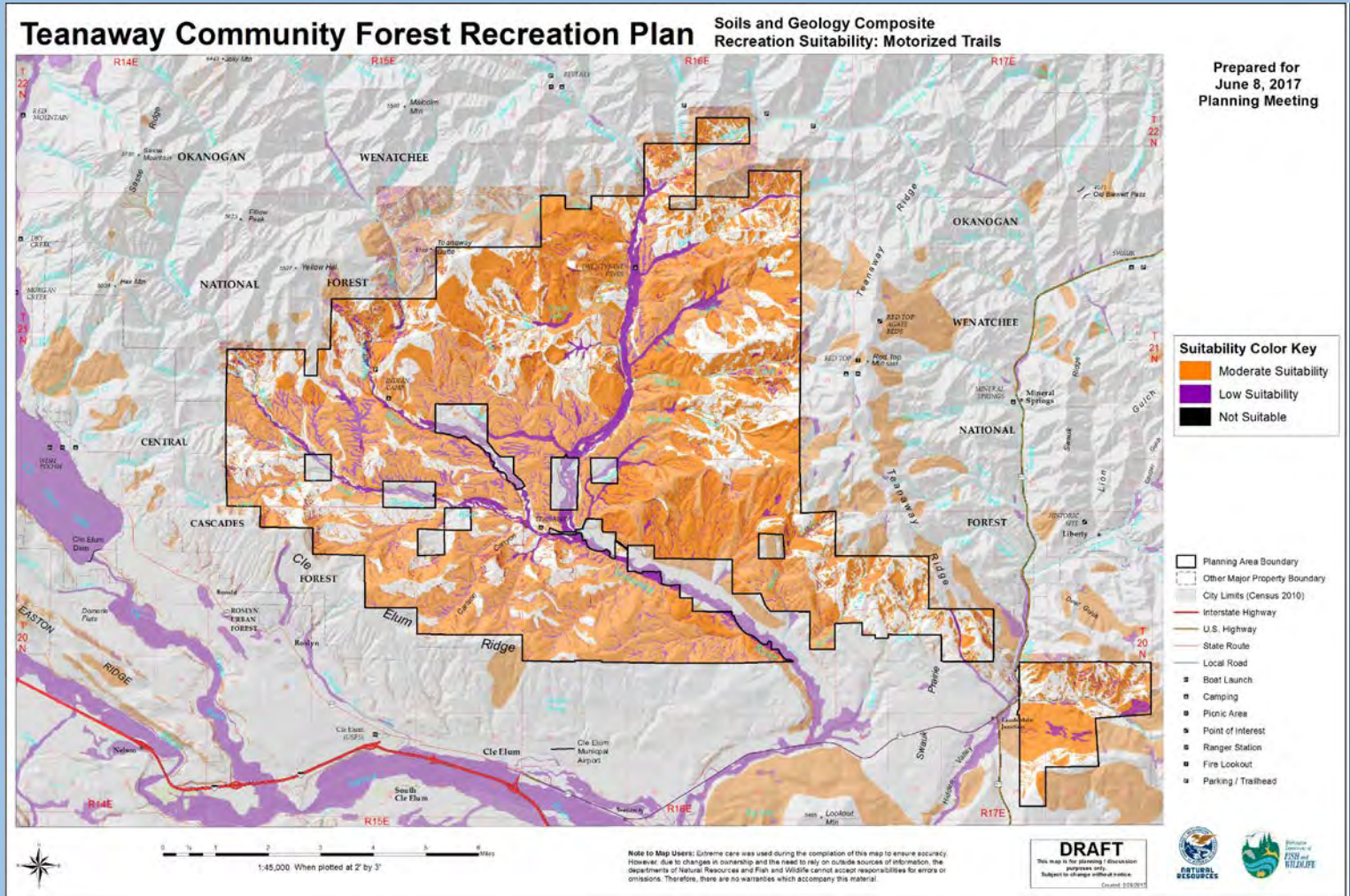


WASHINGTON STATE DEPARTMENT OF
NATURAL RESOURCES



TEANAWAY COMMUNITY FOREST RECREATION PLAN

Soils Geology
Composite
Recreation
Suitability:
Motorized
Trails



Teanaway Community Forest



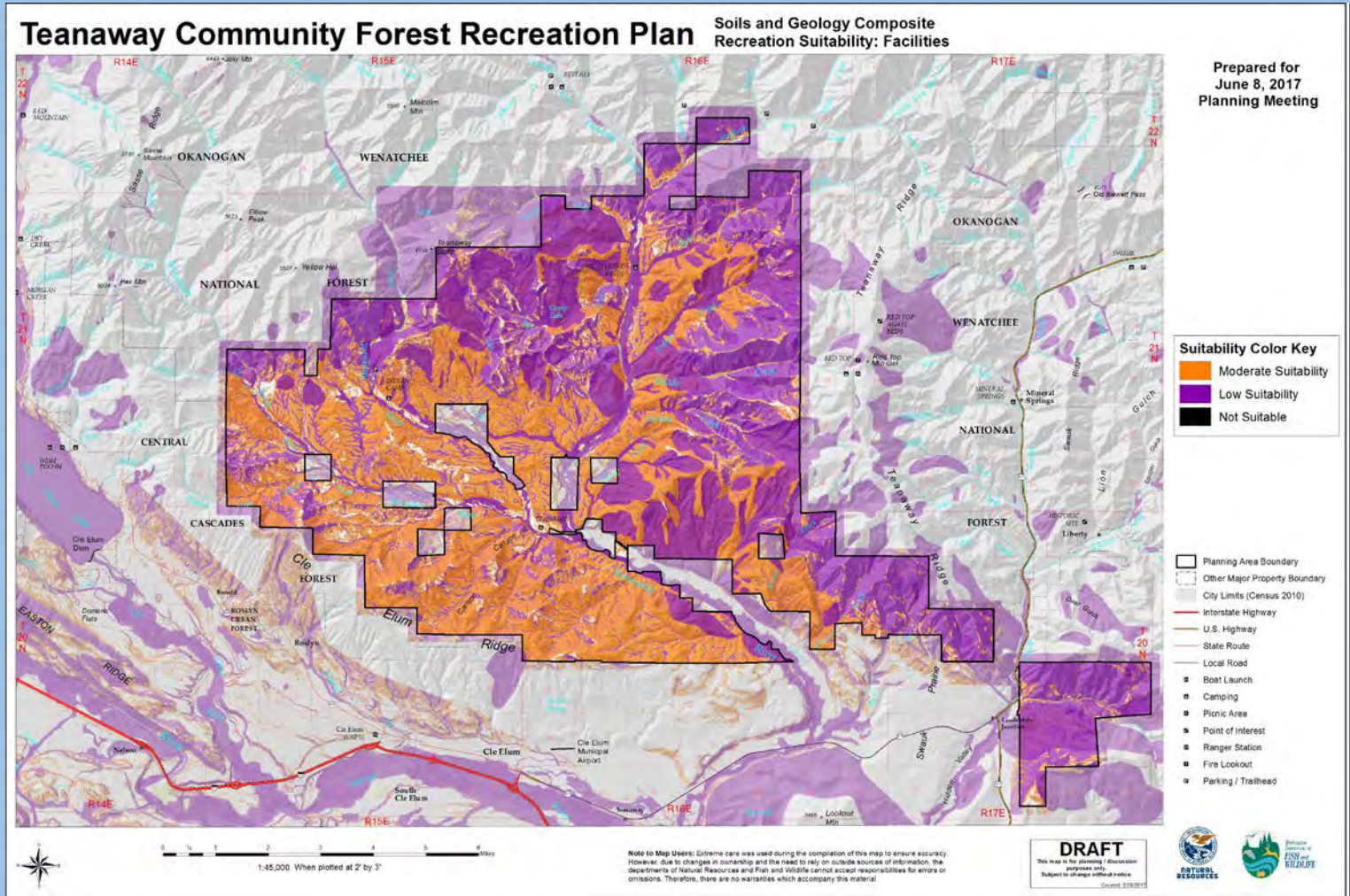
WASHINGTON STATE DEPARTMENT OF
NATURAL RESOURCES



Washington
Department of
FISH and WILDLIFE

TEANAWAY COMMUNITY FOREST RECREATION PLAN

Soils Geology
Composite
Recreation
Suitability:
Facilities



Teanaway Community Forest



WASHINGTON STATE DEPARTMENT OF
NATURAL RESOURCES



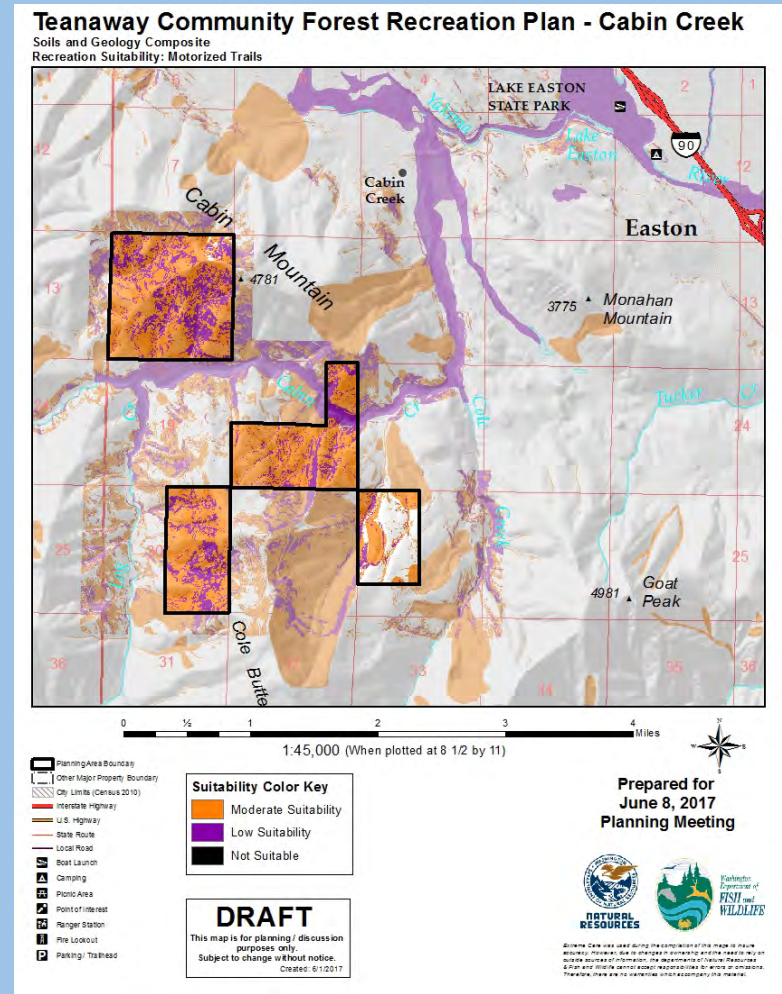
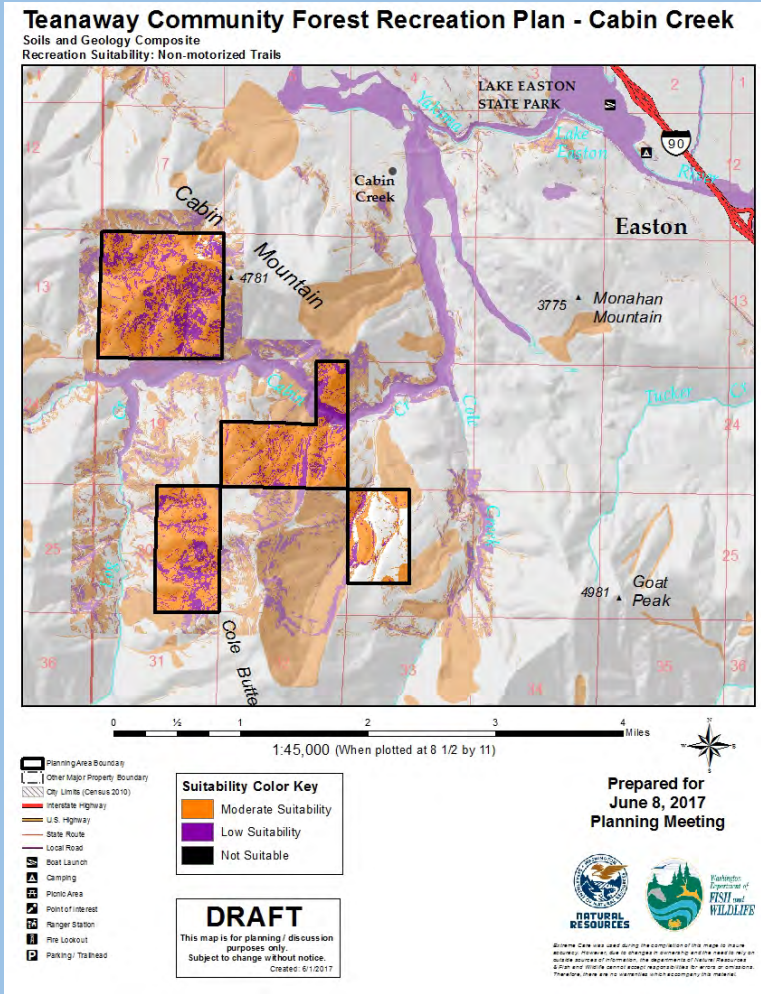
Washington
Department of
FISH and WILDLIFE

TEANAWAY COMMUNITY FOREST RECREATION PLAN

Soils Geology
Composite
Recreation
Suitability:
Cabin Creek

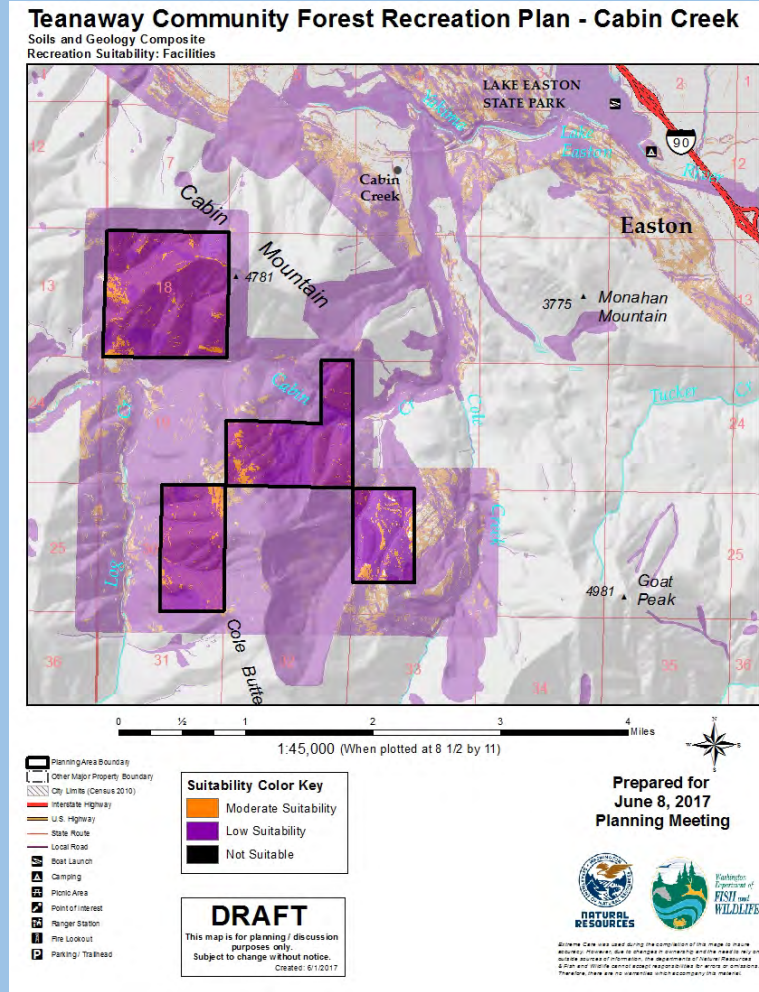
Non-motorized Trails

Motorized Trails



TEANAWAY COMMUNITY FOREST RECREATION PLAN

Facilities



Soils Geology
Composite
Recreation
Suitability:
Cabin Creek

TEANAWAY COMMUNITY FOREST RECREATION PLAN

Questions

