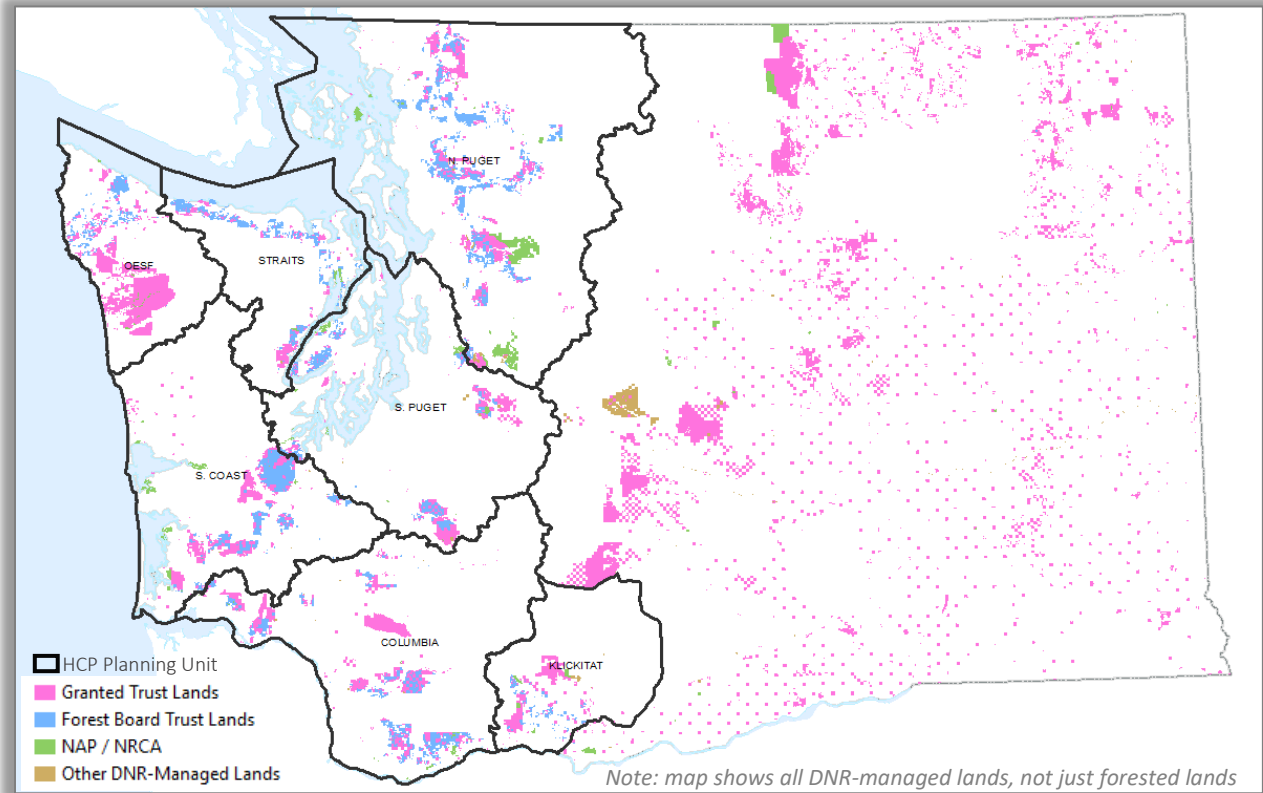


‘Operable Acres’ and ‘Acres Conserved by the HCP’ for Forested DNR-Managed Lands by HCP Planning Unit



Operable Acres: Forested areas identified for even-age management, including regeneration harvest

Acres Conserved by HCP: Includes forested areas in old growth areas, marbled murrelet management areas, habitat in northern spotted management areas, riparian and wetland management zones

Columbia HCP Planning Unit			
Age Class	Operable Acres	Acres Conserved by HCP	Total Acres
0-9	39,687	1,348	41,035
10-19	23,317	1,601	24,918
20-39	49,783	25,415	75,198
40-69	53,866	60,496	114,362
70-119	8,155	19,570	27,725
120-169	607	3,232	3,839
>=170	71	1,517	1,588
Total	175,485	113,179	288,664

Klickitat HCP Planning Unit			
Age Class	Operable Acres	Acres Conserved by HCP	Total Acres
0-9	3		3
10-19	165		165
20-39	783		783
40-69	1,841		1,841
70-119	601		601
120-169	306		306
>=170	29		29
Total	3,728		3,728

North Puget HCP Planning Unit			
Age Class	Operable Acres	Acres Conserved by HCP	Total Acres
0-9	41,656	4,116	45,772
10-19	31,504	3,491	34,995
20-39	59,970	32,992	92,963
40-69	63,655	89,975	153,630
70-119	25,846	62,841	88,687
120-169	3,500	15,497	18,997
>=170	1,459	8,925	10,384
Total	227,591	217,837	445,427

Olympic Experimental State Forest (OESF) HCP Planning Unit			
Age Class	Operable Acres	Acres Conserved by HCP	Total Acres
0-9	16,171	4,291	20,462
10-19	7,796	2,305	10,100
20-39	32,898	25,355	58,253
40-69	28,461	85,124	113,585
70-119	1,426	24,731	26,157
120-169	290	13,633	13,923
>=170	367	29,417	29,784
Total	87,409	184,855	272,264

South Coast HCP Planning Unit			
Age Class	Operable Acres	Acres Conserved by HCP	Total Acres
0-9	37,781	2,441	40,223
10-19	26,408	4,075	30,483
20-39	52,237	30,101	82,338
40-69	36,137	41,709	77,846
70-119	11,562	15,816	27,378
120-169	607	998	1,606
>=170	145	261	406
Total	164,877	95,401	260,279

South Puget HCP Planning Unit			
Age Class	Operable Acres	Acres Conserved by HCP	Total Acres
0-9	14,568	798	15,365
10-19	12,150	957	13,107
20-39	27,523	12,839	40,362
40-69	36,162	31,572	67,733
70-119	10,455	22,360	32,815
120-169	850	6,371	7,221
>=170	41	594	635
Total	101,749	75,490	177,238

Straits HCP Planning Unit			
Age Class	Operable Acres	Acres Conserved by HCP	Total Acres
0-9	15,324	1,096	16,420
10-19	14,342	1,194	15,536
20-39	24,671	10,106	34,777
40-69	17,860	17,973	35,833
70-119	5,995	12,089	18,084
120-169	2,042	3,743	5,785
>=170	110	492	602
Total	80,344	46,693	127,036