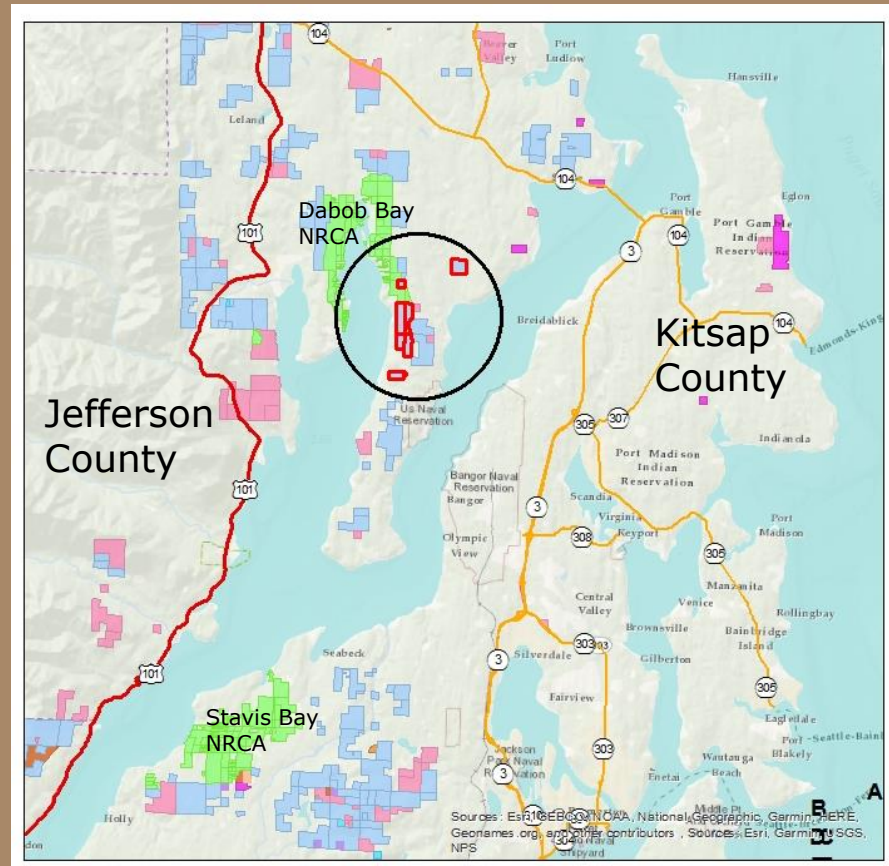


Dabob Bay Trust Land Transfer 02-099529

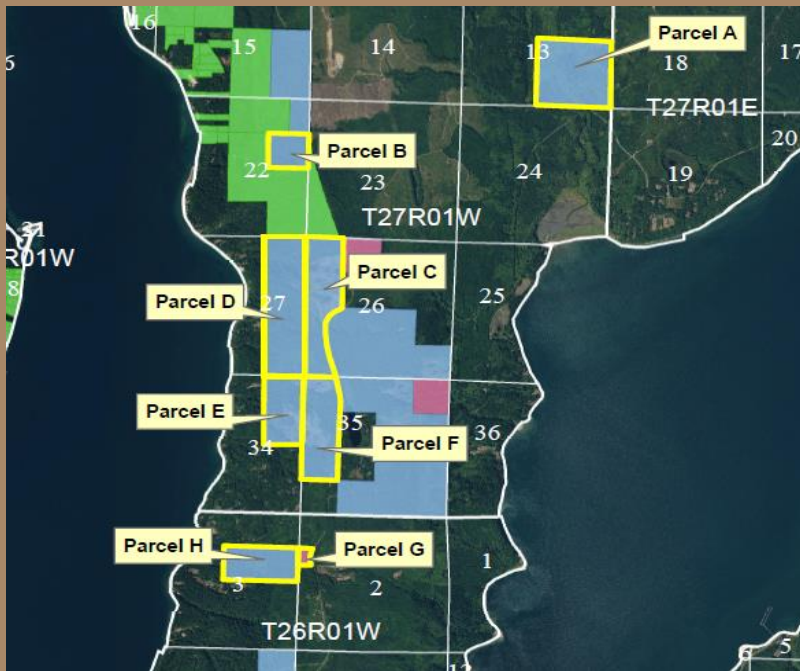
Jefferson County



Dabob Bay Trust Land Transfer Vicinity Map



Dabob Bay Trust Land Transfer Vicinity Map



TLT Transfer:

Parcels in the approved
Dabob Bay NRCA boundary

Parcels B, C, D, E, F directly
connect to currently
conserved NRCA lands

Parcel A north of Thorndyke
Bay



Dabob Bay Trust Land Transfer Overview

- **Propose transfer of all DNR state trust parcels within the approved Dabob Bay NRCA boundary; Parcels A to H**
- **Would use all legislative Trust Land Transfer (TLT) funds along with some RCO grant funds**
- **Legislature appropriated TLT funds to compensate the state trust beneficiary for the transfer of trust lands.**
- **TLT property transferred with a perpetual deed restriction limiting future uses to natural areas purposes.**



Dabob Bay Trust Land Transfer Public Notices

- **Trust Land Transfer list to BNR on Nov. 6, 2018 for 2019-2021 parcels. Dabob Bay on list.**
- **Legislative Hearings and funding in the capital budget, SHB 1102 in April 2019, reappropriations 2021 & 2022, supplemental funding 2022.**
- **DNR Notices sent to County, Legislators and Tribes in July 2019. [Covid-19 outbreak in early 2020 delays transaction and additional outreach efforts].**
- **First Hearing in Quilcene on May 13, 2021.**
- **Second Hearing in Quilcene on Feb. 28, 2023.**



Dabob Bay Trust Land Transfer

Testimony - Aquatic

- **Protects: water quality and shellfish, beaches, species diversity, salmon, steep shorelines, healthy marine systems, healthy watersheds, most pristine bays in Puget Sound, health of Hood Canal**
- **Supports: shellfish industry, pacific herring spawning, environment**

Dabob Bay Trust Land Transfer Testimony – Humans and Government

- **Supports: quality of life, balance of economic and conservation needs, aesthetics, Native American treaty resources, future generations, people and wildlife and their habitats, saving remnant old growth on Olympic Peninsula, rare forests, rare forest types, wild areas, largest rhododendron type forest of its type in the world**
- **Desire: fair and equitable treatment to junior taxing districts, evaluate economic effects sub-taxing**
- **Oppose: Cutting trees for education, Common School sale of land with one time payment, clearcuts**



Dabob Bay Trust Land Transfer

Testimony - Climate

- **Provides: carbon sequestration and climate resiliency, climate mitigation**
- **Supports: trees for oxygen release and as air filters, cooler earth and reduction in global warming**



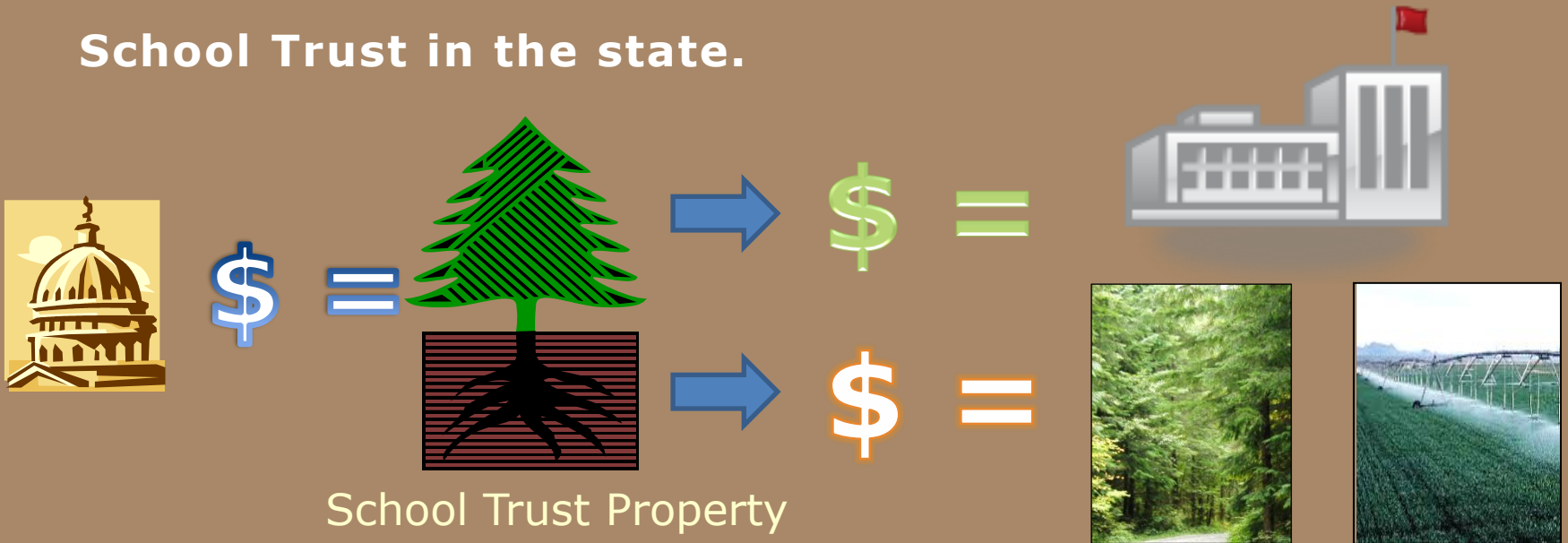
Dabob Bay Trust Land Transfer Testimony - Terrestrial

- **Protects: unstable slopes, globally rare forest types, native forest and fauna, older forest habitat, wetlands, helps to protect largest specific plant community type of DF-WH-rhododendron in the world.**
- **Stops: deforestation, forest conversion as property would be transferred with a perpetual deed restriction limiting future uses to natural area mgmt.**
- **Provides: erosion control, wildfire resilience, carbon sequestration, wild areas**



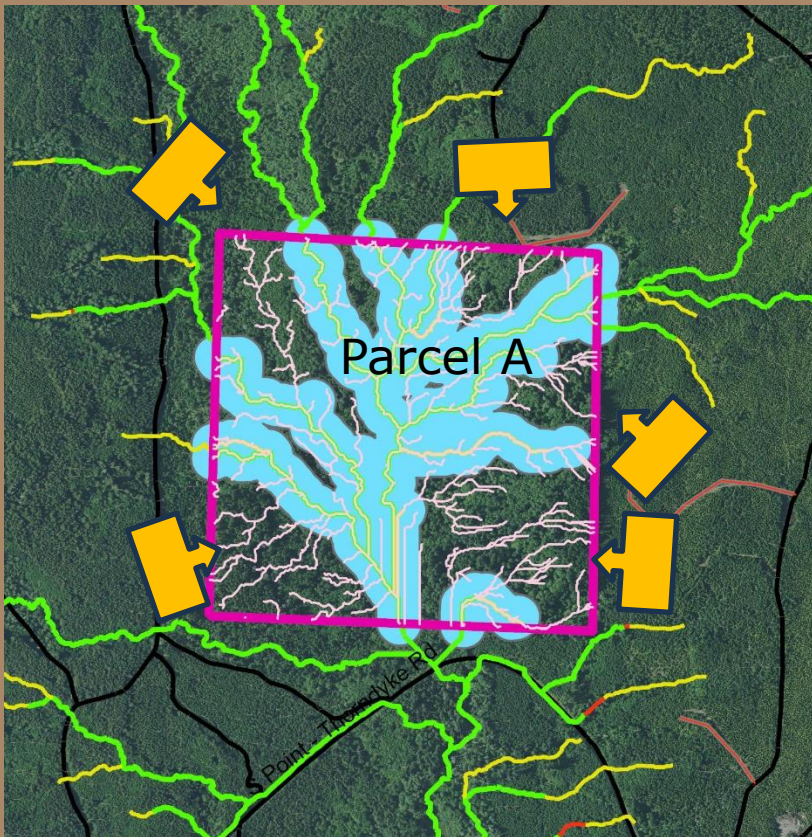
Dabob Bay Trust Land Transfer Historic Funding Process

- Timber value from transferred Common School Trust (K-12) property builds schools.
- Land value buys replacement properties for the Common School Trust in the state.



Dabob Bay Trust Land Transfer

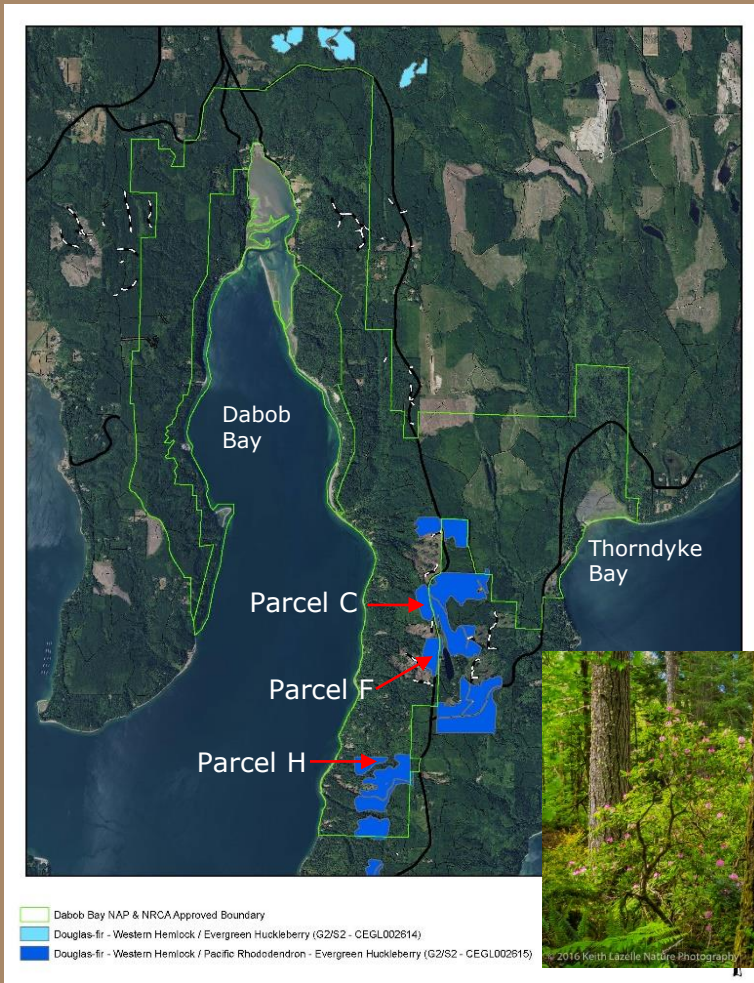
Parcel A - Riparian and Road Access



- Significant riparian streams and buffer areas for DNR
- No legal road access, would need road permits or easements from five areas
- Near important estuary to the south (Thorndyke Bay)
- Trust compensation and habitat preservation - upon transfer of this parcel



Dabob Bay Trust Land Transfer Rare Plant Communities



- Approved Natural Area boundary (green line).
- Identified rare and higher quality Plant Communities
 - G2 (Globally Imperiled)
 - S2 (Imperiled in WA)
- ❖ Total number and condition of occurrences
- ❖ Total population size
- ❖ Range and extent of area occupied
- ❖ Short- and long-term trends in factors above
- ❖ Threats
- ❖ Vulnerability
- SFL trust benefits by getting replacement lands for TLT Parcels C, F, and H that have current harvest restrictions.

Dabob Bay Trust Land Transfer

Overview – Why Exchange, Grant Funds

- **Law at time of Funding - Properties at time of the TLT transfer must be Common School Trust (no longer restricted to solely Common School Trust).**
- **DNR also use awarded grant funds obtained from the State of Washington Recreation and Conservation Office (RCO) for transferring and conserving portions of TLT parcels A to H.**



Dabob Bay Trust Land Transfer

Valuation and Funds

- Transfer of all TLT Parcels A to H: **\$10,095,227**
786.56 acres
Value Land and Forest Reprod. \$ 3,470,393
Value Timber \$ 6,624,834

- TLT Timber Payment - Sent: **\$ 4,600,000**
- TLT Remaining Reappropriation: **\$ 1,600,000**
- TLT New Appropriation: **\$ 2,246,000**
- RCO Funds for Dabob Bay **\$ 1,740,000**
\$10,186,000

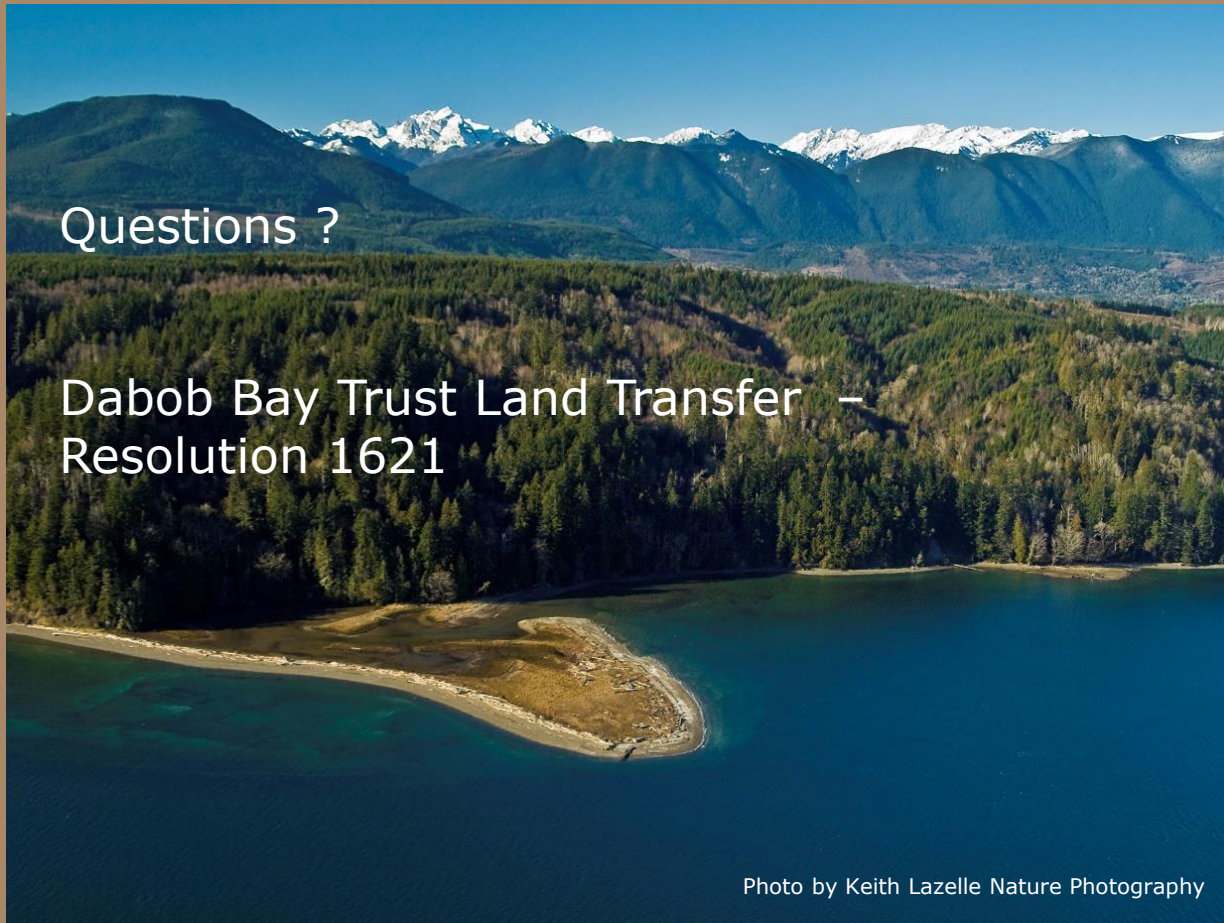
Dabob Bay Trust Land Transfer

Time Sensitive

- **Closing of the transaction is needed before December 30, 2023, when the RCO funds will no longer be available to bridge the needed funding gap.**



Dabob Bay TLT



Questions ?

Dabob Bay Trust Land Transfer –
Resolution 1621

Photo by Keith Lazelle Nature Photography



