



Public Auction Sale of Timber

February 2022

Book 1032



IMPORTANT NOTICES

Natural Resources (DNR)

Governmental Regulatory Actions or Orders

The purchaser assumes the risk of liabilities related to regulatory actions or orders by any government agency that may affect the operability of these timber sales. Such regulatory actions or orders include, but are not limited to, actions taken pursuant to the State Forest Practices Act, Chapter 76.09 RCW, and the Federal Endangered Species Act, 16 U.S.C. §§ 1531-1544. Please see timber sale contract clauses G-066 and G-220 for further information.

Threatened and Endangered Species

DNR cannot verify the presence or absence of any threatened or endangered species that may affect the operability of the timber sale. Purchasers must rely on their own assessments.

Export Restricted

All timber purchased under these state DNR contracts shall not be exported outside of the United States until the timber has been processed. Purchasers shall not violate any of the prohibitions in WAC 240-15-015 (relating to the prohibitions on export and substitution), WAC 240-15-025 (relating to reporting requirements), and WAC 240-15-030 (relating to enforcement). If purchasers knowingly violate WAC 240-15-015, purchasers shall be barred from bidding on or purchasing export restricted timber as provided.

Cover photos

Timber Sales in this book are from state trust lands, managed to help build K-12 public schools, state universities, colleges, prisons, mental hospitals, the state Capitol; and to support local services in many counties.

Top right: Landscape view of DNR-managed trust lands in western Washington. Photo courtesy of DNR staff.

Second down right: Timber harvest operations on DNR-managed trust land. Photo courtesy of DNR staff.

Third down right: Log truck loaded with timber harvested from DNR-managed trust land. Photo courtesy of DNR staff.

Bottom right: Marcus Whitman Elementary School in Richland Washington. Photo courtesy of Richland School District.

Bottom middle: Storytime at the Shelton Timberland Library. Photo courtesy of Timberland Regional Library.

Bottom left: Douglas-fir seedlings growing at the Webster Nursery. Many of these seedlings will be planted following timber harvest on DNR-managed trust lands. Photo courtesy of DNR staff.

Table of Contents

Certification Opportunities for DNR Timber Purchasers	Page 3
Bidder/Purchaser Auction and Bidding Information	Page 5
Summary of All Sales Being Offered in February	Page 9
Taylor Downhill Sorts	Page 11
Q Bald Goat	Page 19
Bull Wacker	Page 29
Hullin Fir	Page 35
High Caliber	Page 41
Rhone	Page 45
Sealed Bid Form and Instructions	Page 49
Statewide Bid Bond and Instructions	Page 51
Timber Sale per Sale Bid Bond and Instructions	Page 55
Log Sort Sealed Bid Form and Instructions	Page 59



Certification Opportunities for DNR Timber Purchasers

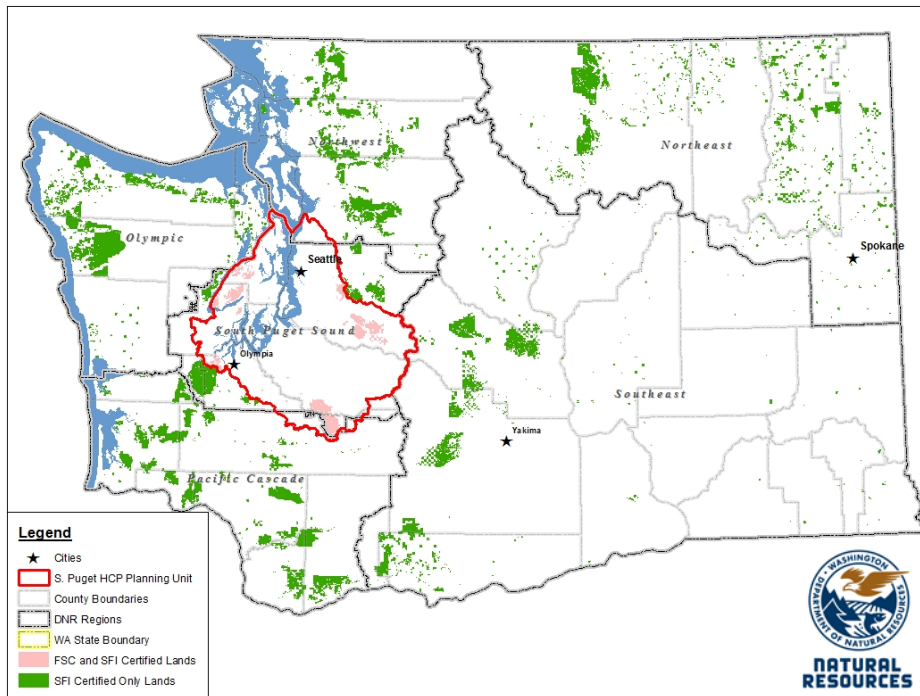
Certified forests are grown to an approved set of standards which demonstrate environmentally responsible, socially beneficial, and economically viable management practices that promote responsible forestry. This unique commitment to responsible forestry recognizes that forest landowners play a critical role in ensuring the long-term health and sustainability of our forests.

Forest Stewardship Council® (FSC®) is an independent, non-profit organization that promotes responsible management of the world's working forests through the development of forest management standards, a voluntary certification system, and trademarks that provide recognition and value to products bearing the FSC label in the marketplace. FSC standards ensure forestry is practiced in an environmentally responsible, socially beneficial, and economically viable way.

Sustainable Forestry Initiative Inc. is an independent, non-profit organization internationally endorsed and accepted around the world. The Sustainable Forestry Initiative® (SFI) program is based on the premise that responsible environmental behavior and sound business decisions can coexist. Its three-chamber Board of Directors governs all aspects of the SFI® program, with equal representation from the environmental, economic, and social sectors.

Currently, all Department of Natural Resources (DNR)-managed forestlands and conservation areas in Washington State are certified under the SFI program Standard. Forestlands within DNR's South Puget Habitat Conservation Plan Planning Unit, located within parts of King, Pierce, Thurston, Lewis, Kitsap, and Mason counties, are dually certified under both the FSC-US Forest Management Standard and the SFI program Standard.

Certification under each standard involves an inspection audit of the landowner's forest management activities by an independent, accredited third-party to verify that it meets specified forest management principles. If the forest unit complies with the specific standard, the landowner receives a certificate of conformance ensuring that responsible forestry is being practiced. Both standards encourage integration of perpetual growing and harvesting of trees with strong measures to protect wildlife, plants, soil, water, and air quality. Both standards provide a seal of approval that forests certified under these principles are well-managed. The global marketplace recognizes and endorses multiple forest certification standards. Each standard has individual market niches. By being dually certified, DNR can maximize its customer base and provide choices to the consumer.



DNR's FSC certificate number is: BV-FM/COC-080501

DNR's SFI certificate number is: PwC-SFIFM-513

DNR-managed forestlands within the South Puget Habitat Conservation Plan Planning Unit (located within parts of King, Pierce, Thurston, Lewis, Kitsap, and Mason counties) are certified as being in compliance with the Forest Stewardship US Forest Management Standard.

To learn more about chain of custody and demonstrating that your timber is derived from a responsibly managed forest and/or to learn more about becoming a participant in the FSC Program, visit <https://us.fsc.org/>.

To learn more about DNR timber sales certified under the FSC Standard, visit www.dnr.wa.gov.

FSC A.C. owns all right, title, and interest in and to the Forest Stewardship Council trademarks.

All DNR-managed forested state trust lands across the state have been certified as being in compliance with the Sustainable Forestry Initiative Forest Management Standard.

To learn more about chain of custody and demonstrating that your timber is derived from a responsibly managed forest and/or to learn more about becoming a participant in the SFI program, visit www.sfiprogram.org.

To learn more about DNR timber sales certified under the SFI program Standard, visit www.dnr.wa.gov.

SFI Marks are registered marks owned by Sustainable Forestry Initiative Inc.

To learn more about certification on DNR-managed forested state trust lands, visit <https://www.dnr.wa.gov/programs-and-services/product-sales-and-leasing/timber-sales/forest-certification> or contact:

Product Sales & Leasing Division, Product Sales Section:

Koshare Eagle, Assistant Division Manager, 360-902-1561, koshare.eagle@dnr.wa.gov
Steve Teitzel, Operations, 360-902-1741, steve.teitzel@dnr.wa.gov

Forest Resources Division, HCP and Scientific Consultation Section:

Allen Estep, Assistant Division Manager, 360-902-2898, allen.estep@dnr.wa.gov
Nicole Jacobsen, Forest Certification Program Lead, 360-902-1283, nicole.jacobsen@dnr.wa.gov

Washington State Department of Natural Resources (DNR)

Bidder's/Purchaser's Inspection of Sale Area and Forest Products

Acreage estimates and volume estimates contained within each timber notice of sale and each timber sale contract are made only for administrative and identification purposes. Except as expressly provided by the timber sale contract, the purchaser shall be responsible for paying the entire purchase price, even if the actual acreage or timber volume varies from the estimated quantity or volume shown.

All prospective bidders have the opportunity and are expected to inspect the sale area and the forest products located thereon. Bidders shall not rely on any representations by the State including, but not limited to, acreage estimates, volume estimates, appraisal or pre-bid documentation. The successful bidder/purchaser will further warrant that they have entered the timber sale contract without any reliance upon the DNR's volume estimates, acreage estimates, appraisals, pre-bid documentation, or any other representation by the DNR.

Any timber sale contract arising out of these public auctions will require the successful purchaser to warrant that they are entering the timber sale contract based solely upon their own judgment of the value of the forest products, formed after their own examination and inspection of both the timber sale area and the forest products being sold.

Exclusion and Disclaimer of Warranties

The PARTIES AGREE that the IMPLIED WARRANTIES OF MERCHANTABILITY AND FITNESS FOR A PARTICULAR PURPOSE, and ALL OTHER WARRANTIES EXPRESS OR IMPLIED, ARE EXCLUDED from this transaction, and shall not apply to the goods sold. For example, THE FOLLOWING SPECIFIC MATTERS ARE NOT WARRANTED, and are EXCLUDED from this transaction:

- A. ***The merchantability of the forest products.*** The use of the term "merchantable" in any document is not intended to vary the foregoing.
- B. ***The condition of the forest products.*** All forest products will be conveyed "AS IS."
- C. ***The acreage contained within any sale area.*** Any acreage descriptions appearing in the timber notices of sale, timber sale contract, timber sale map or other documents are estimates only, provided solely for administrative and identification purposes.
- D. ***The volume, quality, or grade of the forest products.*** The descriptions of the forest products to be conveyed are estimates only, made solely for administrative and identification purposes.
- E. ***The correctness of any soil or surface conditions, presale construction appraisals, investigations, and all other pre-bid documents prepared by or for the State.*** These documents have been prepared for the State's appraisal purposes only.
- F. ***That the sale area is free from threatened or endangered species, or their habitat.*** The State is not responsible for any interferences with forestry operations that result from the presence of any threatened or endangered species, or the presence of their habitat, within the sale area.
- G. That the forestry operations to be performed under this contract will be free from regulatory actions by governmental agencies. The State is not responsible for actions to enforce regulatory laws, such as the Washington Forest Practices Act (Chapter 76.09 RCW), taken by the Department of Natural Resources or any other agency that may affect the operability of these timber sales.
- H. Items contained in any other documents prepared for or by the State.

Please also see timber sale contract clause G-060 for further information.

BIDDING PROCEDURES FOR TIMBER AUCTIONS

The general requirements that follow are a part of all Timber Notices of Sale to be auctioned by the Department of Natural Resources (DNR).

General Information

The State reserves the right to waive minor irregularities and the right to reject any or all bids.

- A. This book contains the timber notices of sale and maps for each timber sale scheduled to be auctioned. More specific information can be obtained by contacting the appropriate region office at the number listed on the back cover of this book. Sales may be added to each monthly auction by the Department which are not included in this publication. This publication is not updated following original production.
- B. The timber notice of sale is a summary of sale information. For more specific information, interested parties are encouraged to view the Auction Packets on www.dnr.wa.gov. Auction Packets contain **DRAFT** copies of the timber notice of sale, map, contract, road plan, cruise data, precruise and cruise narrative, and other associated documents.
- C. Timber sale auction packets may also be obtained at no charge for individual sales by visiting the appropriate region office.
- D. Timber sale contracts contain extensive terms and conditions that will be binding upon successful high bidders. Each bidder should carefully review all terms contained in the appropriate **DRAFT** timber sale contract prior to bidding on a sale, and should review the final contract prior to signing. **DRAFT** timber sale contracts are contained in the auction packets and are available upon request at the respective region office.
- E. Sales advertised in this book are subject to the Board of Natural Resources approval before they will be sold. The Board meets and approves sales approximately six weeks prior to auction.
- F. The State does not guarantee the accuracy of any information contained herein pertaining to particular sales. Therefore, all prospective purchasers are expected to make their own independent inspections and appraisals prior to bidding.
- G. If any conflict exists between the information in the Timber Notice of Sale, timber sale map, sale auction packets and that in the timber sale contract, the signed contract will prevail.
- H. Purchasers must pay the Forest Excise Tax on the bid price, permanent road construction costs, and other considerations. The tax rate is 5% without the EARR credit and 4.2% with the credit. For more information contact the Department of Revenue, Forest Tax Section at 1-800-548-8829.
- I. **All sales are subject to confirmation by the DNR under RCW 79.15.120.**
- J. **Within 30 days of sale confirmation, the apparent high bidder will provide to the State the Performance Security specified on each Notice of Sale. The successful bidder also agrees to return a signed contract to the State within 30 days of confirmation.** Failure to provide a signed contract to the state within 30 days of confirmation may result in a loss of bidder's rights to the products sold and forfeiture of initial deposit moneys.
- K. Each DNR region office has information about sales offered in that region. For further information, contact the respective DNR region office. Region office addresses and telephone numbers appear on the back cover of this booklet.
- L. The purchaser assumes the responsibility for any costs associated with extra maintenance or repair levied by a county for any county road used by the purchaser.

Auction Time and Location

Auctions will start at 10:00 a.m. and close at 4:00 p.m. on the date and at the location specified in each Timber Notice of Sale.

Bidding Process

- A. All timber will be auctioned using the sealed bid method.
- B. Bids submitted on day of auction must be in the bid box at the specified auction location before 10:00 a.m. The respective DNR region office must receive mailed bids by 4:30 p.m., on the last business day before the auction. Bidders assume all risk for the method of delivery.
- C. The DNR has the right to reject bid forms that are completed incorrectly. *All bid forms must have an original signature on behalf of the person or entity submitting the bid, and must be on the form provided in this booklet or a photocopy thereof. Revised documents are not permissible.* Bidding instructions are on the back of the Sealed Bid Form. A bid deposit must be included in the sealed bid envelope unless using a Timber Sale Statewide Bid Bond.
- D. All bids must include the completed Sealed Bid Form and bid deposit.
- E. Bids will be opened in each respective region in the order in which sales appear in the Public Auction Sale of Timber book (alphabetically by county and by agreement number). Sales added after the book is printed will be inserted to retain this order. Sort sales may be auctioned out of this sequence at the State's convenience.
- F. If a tie bid occurs, the names of the tie bidders will be placed in a hat and the successful bidder will be determined by a drawing.
- G. Opportunities to Withdraw Bids:
For all sales offered on a stumpage basis only, the apparent high bidder on a particular sale will have the option of withdrawing additional sealed bids submitted for any remaining sales to be auctioned. The apparent high bidder must exercise this option within two minutes after the apparent high bidder is announced. This option is not available for sales offered on a delivered basis.

Eligibility to Bid

The following criteria must be met in order to bid on State timber sales:

- 18 years of age (or have a co-signer who meets the eligibility requirements)
- Licensed to do business in the State of Washington
- Eligible to bid on Export Restricted timber
- Authorized to submit bids

Authorized Representatives

Company officers or company authorized representatives may bid on State sales, sign State documents, or sign checks. A list of authorized representatives and their specific authorities must be submitted, in writing, to the Department of Natural Resources, Product Sales and Leasing Division, P.O. Box 47014, Olympia, Washington, 98504-7014, ten days in advance of the auction. *A company owner or officer must sign this submittal.*

Bid Deposits

- A. Required bid deposits are listed on each Timber Notice of Sale.
- B. Bid deposits must be in the form of cash, certified check, cashiers' check, money order or bid bond.
- C. Bid bonds may be either a Timber Sale Per Sale Bid Bond or a Timber Sale Statewide Bid Bond.
- D. All bid deposits shall be submitted by the person or entity submitting the bid and made payable to the Department of Natural Resources. **Third party deposits will not be accepted.**

Timber Sale Per Sale Bid Bonds

- A. The Per Sale Bid Bond shall guarantee payment of the bid deposit **within ten days of auction.**
- B. The balance between the bid bond and the Initial Deposit payment is due **by 4:30 p.m., on the day of auction.**
- C. Additional forms and instructions for a Per Sale Bid Bond are available at any DNR region office.

Timber Sale Statewide Bid Bond

- A. Statewide Bid Bonds shall guarantee payment of the Initial Deposit on any statewide timber sale while the bond is in effect.
- B. The Statewide Bid Bond must be received by the Department of Natural Resources, Product Sales and Leasing Division, P.O. Box 47014, Olympia, Washington, 98504-7014, ten days in advance of the auction date. The bond shall be in the amount of \$150,000.00.
- C. Successful bidders using a Statewide Bid Bond must pay the total Initial Deposit payment (10% of the total bid price) **by 4:30 p.m., on the day of the auction.**
- D. A Statewide Bid Bond cannot be used to secure the Initial Deposit payment due the day of auction.
- E. Additional forms and instructions for a statewide bid bond are available at any DNR region office.

Payments

The initial deposit for a sale is 10% of the total bid value as submitted by the apparent high bidder (25% if the bidder is a defaulter as defined under WAC 332-140-300) and never less than \$5,000.00 for lump sum sales. For Lump Sum sales appraised at less than \$5,000.00, the entire bid value is due on day of auction.

- A. Apparent high bidders using cash, certified check, cashiers' check or money order as a bid deposit must pay the total Initial Deposit amount by 4:30 p.m. on auction day.
- B. Apparent high bidders using a Timber Sale Per Sale Bid Bond as a bid deposit must pay the difference between the bid deposit and the total initial deposit by 4:30 p.m., on the day of auction. The bid bond amount must be replaced with a certified check, cashiers' check, bank draft, cash, money order, or wire transfer within ten days of the auction.
- C. Apparent high bidders using a Timber Sale Statewide Bid Bond must pay the entire Initial Deposit amount by 4:30 p.m. on the day of auction.
- D. All payments must be in the form of a certified check, cashiers' check, bank draft, cash, money order or wire transfer.



Summary Report of All Sales for the Month of February 2022

Board Sales

<u>County</u>	<u>Region</u>	<u>Agree #</u>	<u>FSC® Sale Name</u>	<u>Volume</u>	<u>Value</u>
Jefferson	Olympic	102045	TAYLOR DOWNHILL SORTS	5,245	\$3,380,872.00
Okanogan	Northeast	102503	Q BALD GOAT	3,721	\$569,000.00
Pacific	Pacific Cascade	83240	BULL WACKER	5,851	\$1,467,000.00
Pacific	Pacific Cascade	92187	HULLIN FIR	4,040	\$1,065,000.00
Snohomish	Northwest	101112	HIGH CALIBER	3,144	\$929,000.00
Thurston	South Puget	101101	RHONE	3,128	\$1,138,000.00
			Total	25,129	\$8,548,872.00



Scan with your smartphone or tablet to go to the February 2022 timber auction page



TIMBER NOTICE OF SALE

SALE NAME: TAYLOR DOWNHILL SORTS

AGREEMENT NO: 30-102897 - 30-102906

AUCTION: February 23, 2022 starting at 10:00 a.m.
Olympic Region Office, Forks, WA

COUNTY: Jefferson

SALE LOCATION: Sale located approximately 10 miles north of Quilcene

**PRODUCTS SOLD
AND SALE AREA:**

Contractor shall harvest and deliver, all timber except trees painted with blue paint or bounded out by yellow Leave Tree Area tags, bounded by the following: Timber Sale Boundary tags, timber type change, and the PT-S-4000 road in Unit 1; Timber Sale Boundary tags, Timber Sale Boundary flagging, timber type change, and the PT-S-2000 road in Unit 2; Timber Sale Boundary tags, Timber Sale Boundary Flagging, a distinct timber type change, and the PT-O-1000, PT-O-1100, PT-O-1400, and PT-O-1420 roads in Unit 3.

All timber bounded by Right-of-Way boundary tags on the PT-S-4000 road.

Meeting the specifications described below; located on parts of Section 16 in Township 28 North, Range 2 West, Sections 16, and 21 all in Township 28 North, Range 1 West W.M., containing 155 acres, more or less.

MINIMUM BID AND ESTIMATED LOG VOLUMES:

Agreement #	Sort #	Species and Sort Specifications	Average Log Length	Estimated Volume		Tons Per MBF	Minimum Bid Delivered Prices		Total Appraised Value	Bid Deposit
				Mbf	Tons		\$/mbf	\$/Ton		
102897	01	DF High Quality B Sort 12"+ SED	34	1312	7216	5.5	\$690.00		\$905,280.00	\$90,528.00
102898	02	DF Sawlog 20"+ SED	28	128	627	4.9	\$550.00		\$70,400.00	\$7,040.00
102899	03	DF Sawlog 12" to 19" SED	28	1245	7470	6	\$600.00		\$747,000.00	\$74,700.00
102900	04	DF Sawlog 5" to 11" SED	28	1776	13320	7.5	\$600.00		\$1,065,600.00	\$106,560.00
102901	05	RC Camprun 5"+	28	363	2214	6.1	\$1,100.00		\$399,300.00	\$39,930.00
102902	06	Whitewood Sawlog 5" to 11" SED	28	207	1428	6.9	\$450.00		\$93,150.00	\$9,315.00
102903	07	Whitewood Sawlog 12" + SED	28	164	968	5.9	\$500.00		\$82,000.00	\$8,200.00
102904	08A	Red Alder Sawlog 5" + SED	26	27	189	7	\$450.00		\$12,850.00	\$5,000.00
	08B	Bigleaf Maple Sawlog 5" + SED	20	2	14	7	\$350.00 FIXED			
102905	09	Conifer Pulp 2"+ SED	n/a	21	189	9		\$28.00	\$5,292.00	\$5,000.00

Totals: 5245 33635 \$3,380,872.00

CERTIFICATION: This sale is certified under the Sustainable Forestry Initiative® program Standard (cert no: PwC-SFIFM-513)



TIMBER NOTICE OF SALE

BID METHOD: Sealed Bids **UNIT OF MEASURE:** MBF Scale/Tonnage Scale

EXPIRATION DATE: January 20, 2023 **ALLOCATION:** Export Restricted

PAYMENT SECURITY: To be determined by the State as described in Clause P-045.2 of the Purchaser’s Contract.

BIDDING PROCEDURES: A separate sealed bid and envelope must be submitted for each log sort. Prospective Purchasers may bid on any or all log sorts. On the day of sale the Purchaser must bring their bid deposit up to 10% of their total bid price. Complete bidding procedures and auction information may be obtained from the Olympic Region Office in Forks WA. Phone number (360)374-2800.

TIMBER EXCISE TAX: Purchaser must pay the forest excise taxes associated with the log sorts delivered to them. The tax rate for this sale is 4.2 %. Taxable Stumpage = Total Delivered Value – (Harvest Cost + Estimated Haul Cost + ARRF). For more information contact the Department of Revenue, Forest Tax Section at 1-800-548-8829.

Use the following rates for estimating taxable stumpage:

Harvest Cost = \$0.00 per MBF for sorts 01, 02, 03, 04, 05, 06, 07 and 08 and \$0.00 per Ton for sort 09.

Hauling Services Payment Rate per Ton
= (Base Rate + Mileage Rate) x (Contractor's hauling bid factor)

Base Rate = \$2.35 per ton

Mileage Rate = ((\$0.16 x C miles) + (\$0.11 x A miles)) x Fuel Index Factor

ARRF does not apply.

Note: To calculate ARRF rates per ton use the tons\mbf conversion factor in the table above.

Long-haul surcharge: An additional haul payment of \$25/mbf net scale for mbf scale sorts or \$4.60/ton for tonnage sorts will be added for delivery destinations in excess of 250 total one-way miles (A miles plus C miles).

CONFIRMATION: Each sort is subject to confirmation following auction. Sorts will not be confirmed until at least 10 days after auction. Final contract award is contingent upon the State’s haul cost analysis. Actual haul route may vary and is subject to change at the State’s discretion.

SPECIAL REMARKS: The successful Purchaser(s) will be required to purchase logs from the sale area upon delivery to their location specified in the bid submitted. Logs will be delivered to the Purchaser’s delivery location by the State’s contract harvester. Purchaser is responsible for weighing and scaling costs. All tonnage loads will be weighed and all mbf loads will be scaled at State approved locations. The State reserves the right to determine where logs are authorized to be scaled and weighed.

There are locked gates on the PT-O-1000 and PT-B-1020 roads. Contact the Olympic Region Dispatch Center at 360-374-2800 to obtain an AA-1 key.



TIMBER NOTICE OF SALE

Harvester may develop existing rock sources called Jimmycomelately Pit and Orchestra Pit, in accordance with the written Rock Source Development and Plan included in the road plan. Stockpiling of rock in the Jimmycomelately Pit is required.

Rock identified to be used out of a State lands rock pit shall meet specifications as identified within the Road Plan, as determined by the Contract Administrator. If the rock does not meet required specifications, a commercial source shall be used at the Harvester's expense.

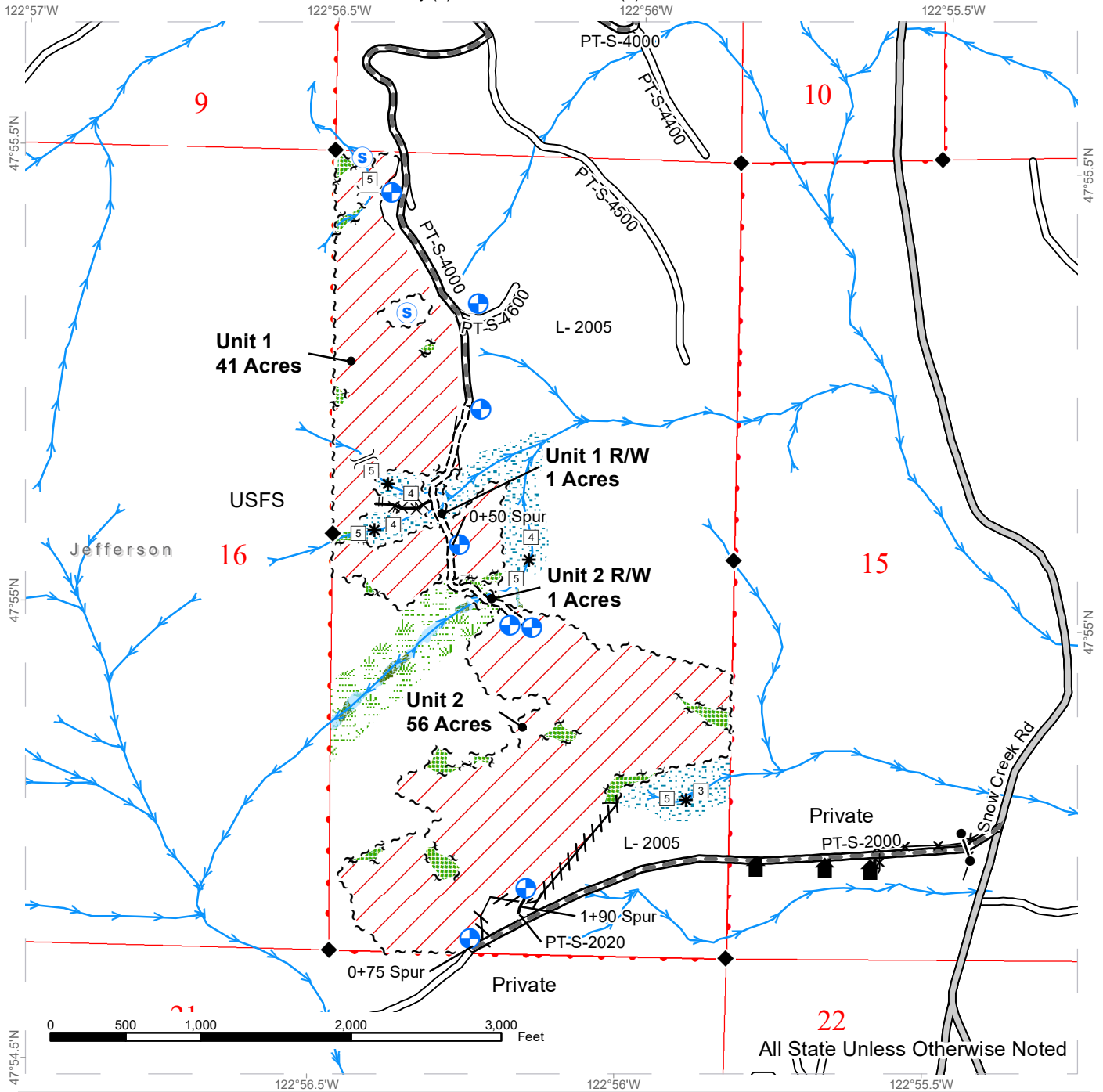
All trees 60 inches in Diameter at Breast Height (DBH) and greater shall not be felled unless for safety reasons, which must be approved by the Contract Administrator. If trees 60 inches DBH or greater needs to be felled for safety reasons, trees will be left where felled.

For more information regarding this log sort sale visit our web site: <http://www.dnr.wa.gov/programs-and-services/product-sales-and-leasing/timber-sales/timber-auction-packets>. If you have questions call Jeremy Brown at the Olympic Region Office at (360) 391-5976 or Steve Teitzel at the Product Sales and Leasing Division Office in Olympia at (360) 902-1741.

TIMBER SALE MAP

SALE NAME: TAYLOR DOWNHILL SORTS
AGREEMENT #: 30 - 102045
TOWNSHIP(S): T28R2W
TRUST(S): Common School and Indemnity (3), State Forest Transfer (1)

REGION: Olympic Region
COUNTY(S): Jefferson
ELEVATION RGE: 560-1680

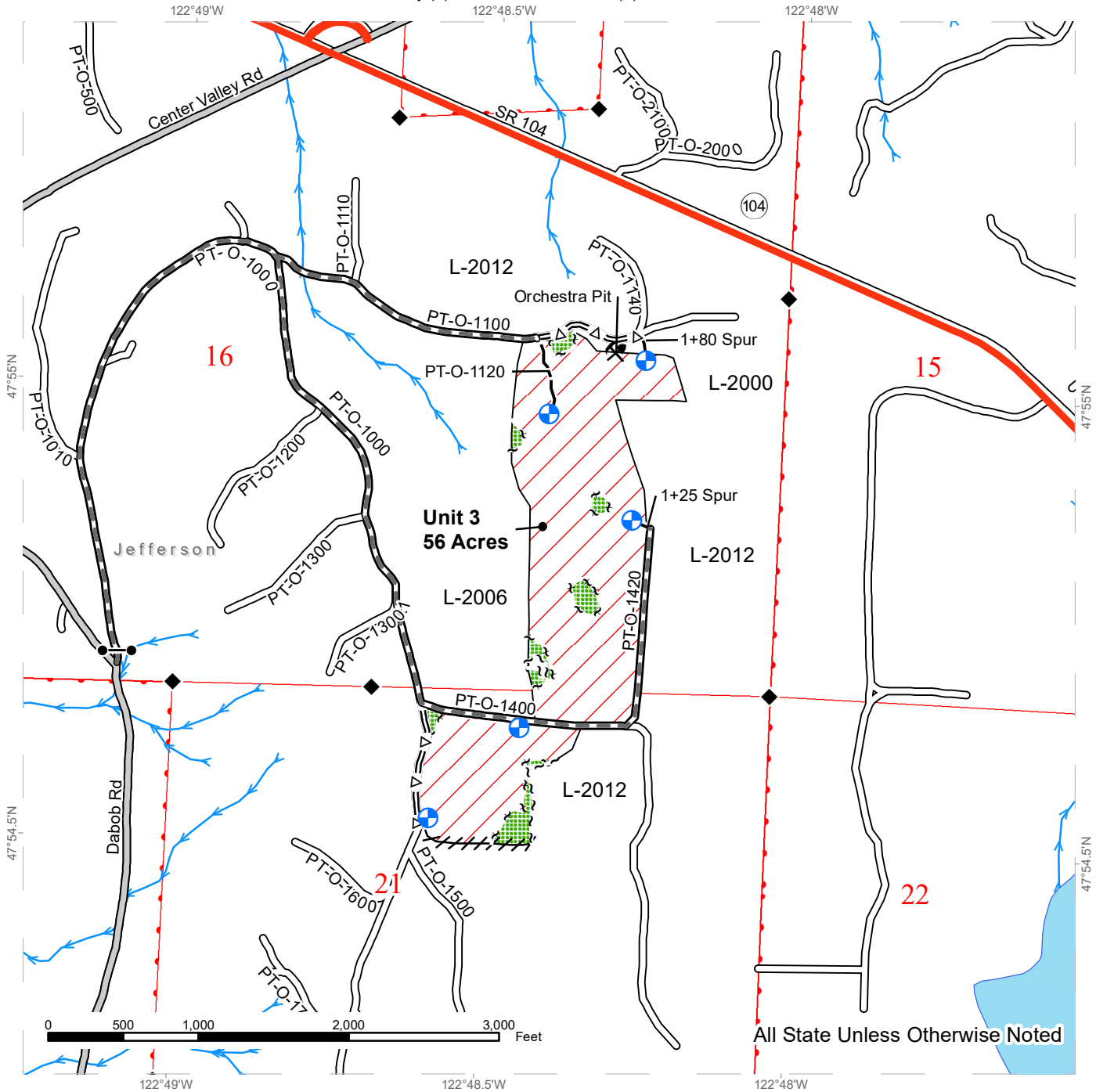


Variable Retention Harvest	Right of Way Tags	Required Pre-Haul Maintenance	Survey Monument
Leave Tree Area	Property Line	Required Construction	Proposed Landing
Riparian Mgt Zone	Flag Line	Optional Pre-Haul Maintenance	Structure
Forested Wetland	Timber Type Change	Optional Construction	Cut Tree
Wetland Mgt Zone	Fence	Optional Reconstruction	Seep
DNR Managed Lands	Streams	Equipment Trail	Stream Type
Sale Boundary Tags	County Road	Designated Crossing	Stream Type Break
Leave Tree Tags	Existing Roads	Gate	

TIMBER SALE MAP

SALE NAME: TAYLOR DOWNHILL SORTS
AGREEMENT #: 30 - 102045
TOWNSHIP(S): T28R1W
TRUST(S): Common School and Indemnity (3), State Forest Transfer (1)

REGION: Olympic Region
COUNTY(S): Jefferson
ELEVATION RGE: 560-1680



All State Unless Otherwise Noted

Legend

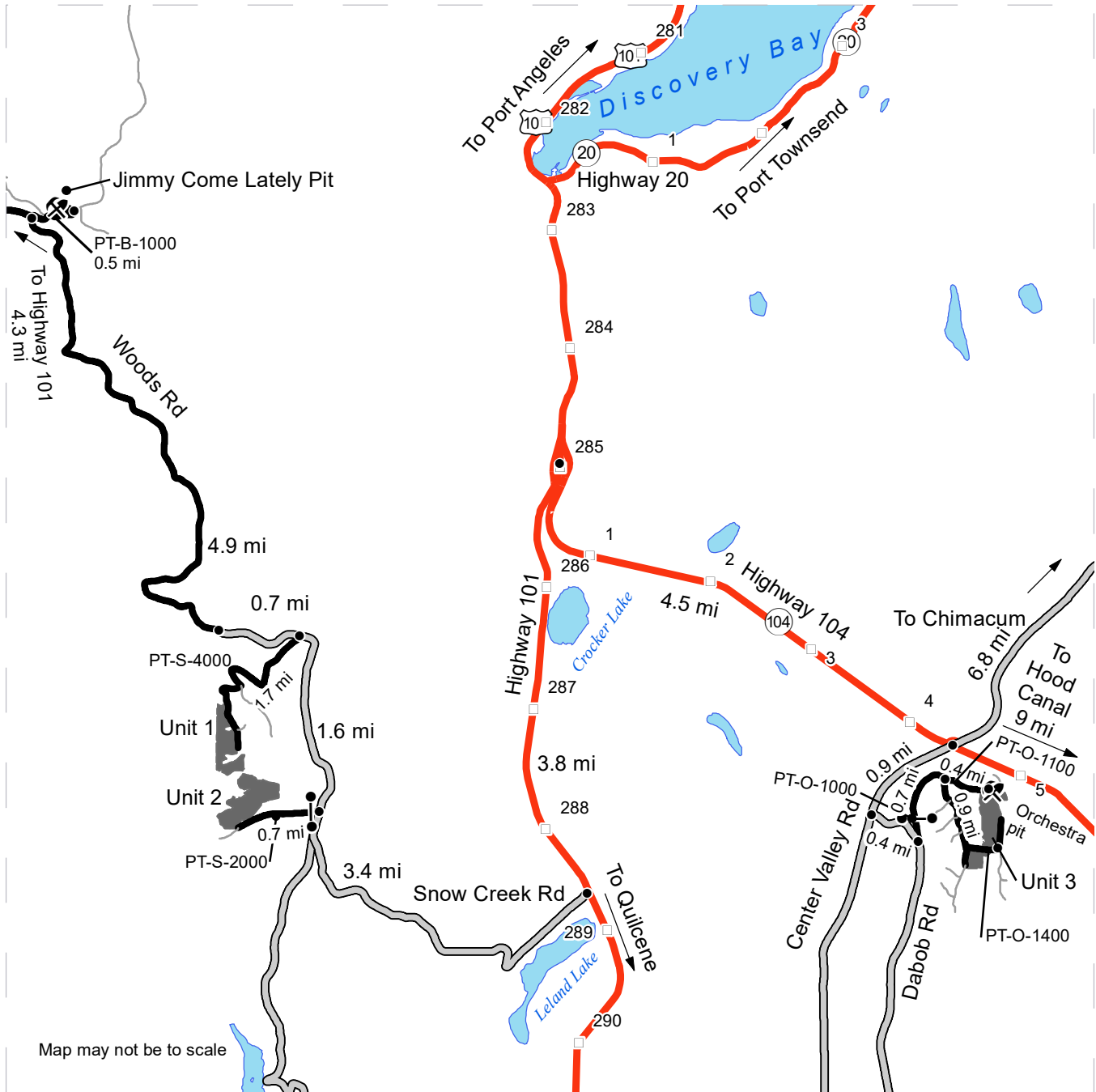
Variable Retention Harvest	Leave Tree Tags	Existing Roads	Survey Monument
Leave Tree Area	Right of Way Tags	Required Pre-Haul Maintenance	Rock Pit
Townships Lines	Property Line	Optional Pre-Haul Maintenance	Proposed Landing
Sections Lines	Flag Line	Optional Construction	Highway
DNR Managed Lands	Timber Type Change	Streams	Highway Shield
Sale Boundary Tags	County Road	Gate	



DRIVING MAP

SALE NAME: TAYLOR DOWNHILL SORTS
AGREEMENT#: 30-102045
TOWNSHIP(S): T28R1W, T28R2W
TRUST(S): Common School and Indemnity (3), State Forest Transfer (1)

REGION: Olympic Region
COUNTY(S): Jefferson
ELEVATION RGE: 560-1680



- Timber Sale Unit
- Haul Route
- Other Roads
- County Road
- Highway
- Distance Indicator
- Gate
- Rock Pit
- Milepost Markers

DRIVING DIRECTIONS:

See Attached Directions



Driving Direction

Taylor Downhill Sorts

Starting at the west end of the Hood Canal Bridge.

For unit 1, 2 and Jimmy Come Lately pit:

Continue west on Highway 104 for 13.5 miles to intersection with Highway 101.

Turn left on 101 heading south.

Continue south for 3.8 miles to Snow Creek Rd.

Turn right on Snow Creek road. Stay on Snow Creek road for 3.4 miles to PT-S-2000 Rd on the left for unit 2. Road is an easement and is gated by owner for livestock. If gate is closed please close behind you. Unit 2 is 0.7 miles down the PT-S-2000.

For unit 1 continue on Snow Creek Rd from PT-S-2000 for 1.6 miles to PT-S-4000 Rd.

Turn left on the PT-S-4000 and up 1.7 miles to the unit.

For Jimmy Come Lately pit, continue west from PT-S-4000 Rd on Snow Creek Rd for 0.7 miles.

Road becomes FS-2850/Woods Rd, continue for 4.9 miles to PT-B-1000 Rd.

Turn right on PT-B-1000 Rd.

Continue east on PT-B-1000 for 0.5 miles to PT-B-1020 Rd.

Turn left on PT-B-1020 Rd. This road is gated by DNR. Pit is on the left.

For unit 3: continue west on Highway 104 for 9 miles to Center Valley Rd.

Turn right onto Center Valley Rd. Continue south down Center Valley Rd for 0.9 miles to Dabob Rd.

Turn left on Dabob Rd. Continue on Dabob for 0.4 miles to PT-O-1000 Rd.

Turn left on PT-O-1000. This road is gated by a DNR gate.

Continue through gate 0.7 miles to PT-O-1100.

Head left on the PT-O-1100 for 0.4 miles to north end of unit 3 and Orchestra pit.

Or continue on the PT-O-1000 for 0.9 miles to the PT-O-1400 Rd and south end of Unit 3.



TIMBER NOTICE OF SALE

SALE NAME: Q BALD GOAT

AGREEMENT NO: 30-102503

AUCTION: February 22, 2022 starting at 10:00 a.m., Northeast Region Office, Colville, WA

COUNTY: Okanogan

SALE LOCATION: Sale located approximately 13 miles southwest of Loomis, WA

PRODUCTS SOLD AND SALE AREA:

All green conifer species (excluding ponderosa pine) except of leave trees banded with blue paint in Units 1, 2, 3, 4, 5, 6, 7 and 8 bounded by white timber sale boundary tags; and all right of way timber bounded orange right of way tags.

All forest products above located on part(s) of Sections 6 all in Township 36 North, Range 25 East, Sections 29, 30 and 31 all in Township 37 North, Range 25 East, Sections 36 all in Township 37 North, Range 24 East, W.M., containing 332 acres, more or less.

CERTIFICATION: This sale is certified under the Sustainable Forestry Initiative® program Standard (cert no: PwC-SFIFM-513)

ESTIMATED SALE VOLUMES AND QUALITY:

Table with columns: Species, Avg DBH, Ring Count, Total MBF, and MBF by Grade (P, SM, 1S, 2S, 3S, 4S, 5S, 6S, UT). Rows include Larch, Douglas fir, Spruce, Alpine fir, and Sale Total.

MINIMUM BID: \$569,000.00

BID METHOD: Sealed Bids

PERFORMANCE SECURITY:

\$100,000.00

SALE TYPE: Lump Sum

EXPIRATION DATE: November 30, 2023

ALLOCATION: Export Restricted

BID DEPOSIT: \$56,900.00 or Bid Bond. Said deposit shall constitute an opening bid at the appraised price.

HARVEST METHOD: Rubber tired skidder, Track skidder, Dozer, and Ground based equipment. Falling and Yarding will not be permitted from March 15 to June 1 unless authorized in writing by the Contract Administrator due to spring breakup. Falling and Yarding will not be permitted from May 1 to August 1 in Unit 7 unless authorized in writing by the State due to wildlife timing restrictions.

ROADS: 16.96 stations of required construction. 3.68 stations of required reconstruction. 348.30 stations of required prehaul maintenance. 49.32 stations of abandonment. 10.53 stations of decommissioning. Road construction will not be permitted from March 15 to June 1 unless authorized in writing by the Contract Administrator due to spring breakup. Road construction will not be permitted from May 1 to August 1 in Unit 7 unless authorized in writing by the State due to wildlife timing restrictions. The hauling of forest products will not be permitted from March 15 to June 1 unless authorized in writing by the



TIMBER NOTICE OF SALE

Contract Administrator due to spring breakup. The hauling of forest products will not be permitted from May 1 to August 1 in Unit 7 unless authorized in writing by the State due to wildlife timing restrictions.

ACREAGE DETERMINATION

CRUISE METHOD: Acreage determined using GPS methods. Acreage shown above is net harvest acres in harvest units. All species: 7.0 - 17.5 inches dbh has minimum top of 4.6 inch dib. All species 17.6 inches and greater dbh have a minimum top dib of 40% of dob at 16 feet or a 6 inch top whichever is greater.

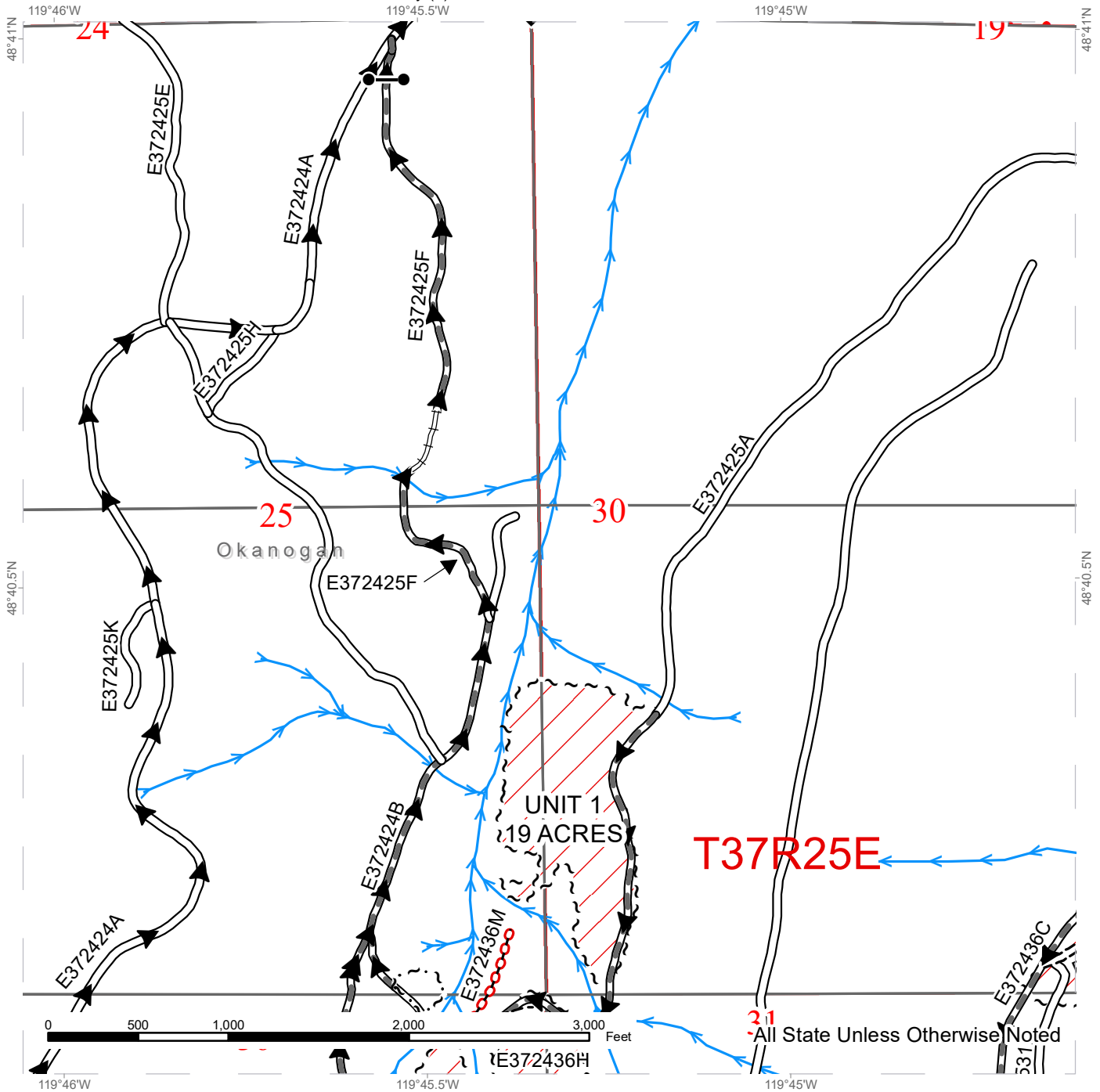
FEES: \$63,257.00 is due on day of sale. \$9.00 per MBF is due upon removal. These are in addition to the bid price.

SPECIAL REMARKS: Locked gates restricts access. Contact the Northeast Region Office at (509) 684-7474 for access.

TIMBER SALE MAP

SALE NAME: Q BALD GOAT
AGREEMENT #: 30-102503
TOWNSHIP(S): T36R25E, T37R24E, T37R25E
TRUST(S): Common School and Indemnity (3)

REGION: Northeast Region
COUNTY(S): Okanogan
ELEVATION RGE: 3640-5040



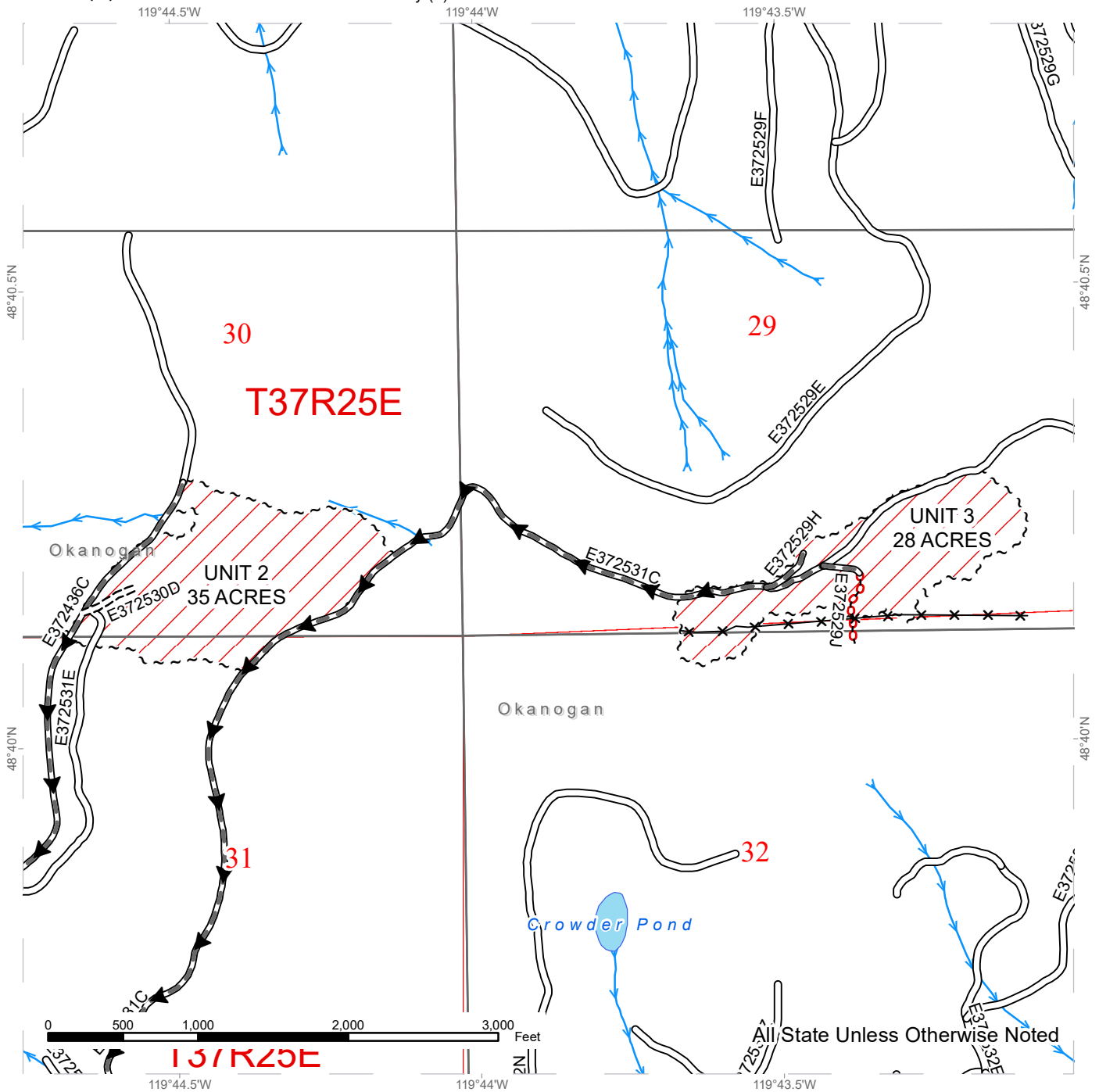
All State Unless Otherwise Noted

Public Land Survey Sections	Existing Roads	Streams
DNR Managed Lands	Required Pre-Haul Maintenance	Survey Monument
Variable Retention Harvest	Required Construction	Gate
Sale Boundary Tags	Required Reconstruction	
	Required Abandonment	
	Haul Route	

TIMBER SALE MAP

SALE NAME: Q BALD GOAT
AGREEMENT #: 30-102503
TOWNSHIP(S): T36R25E, T37R24E, T37R25E
TRUST(S): Common School and Indemnity (3)

REGION: Northeast Region
COUNTY(S): Okanogan
ELEVATION RGE: 3640-5040



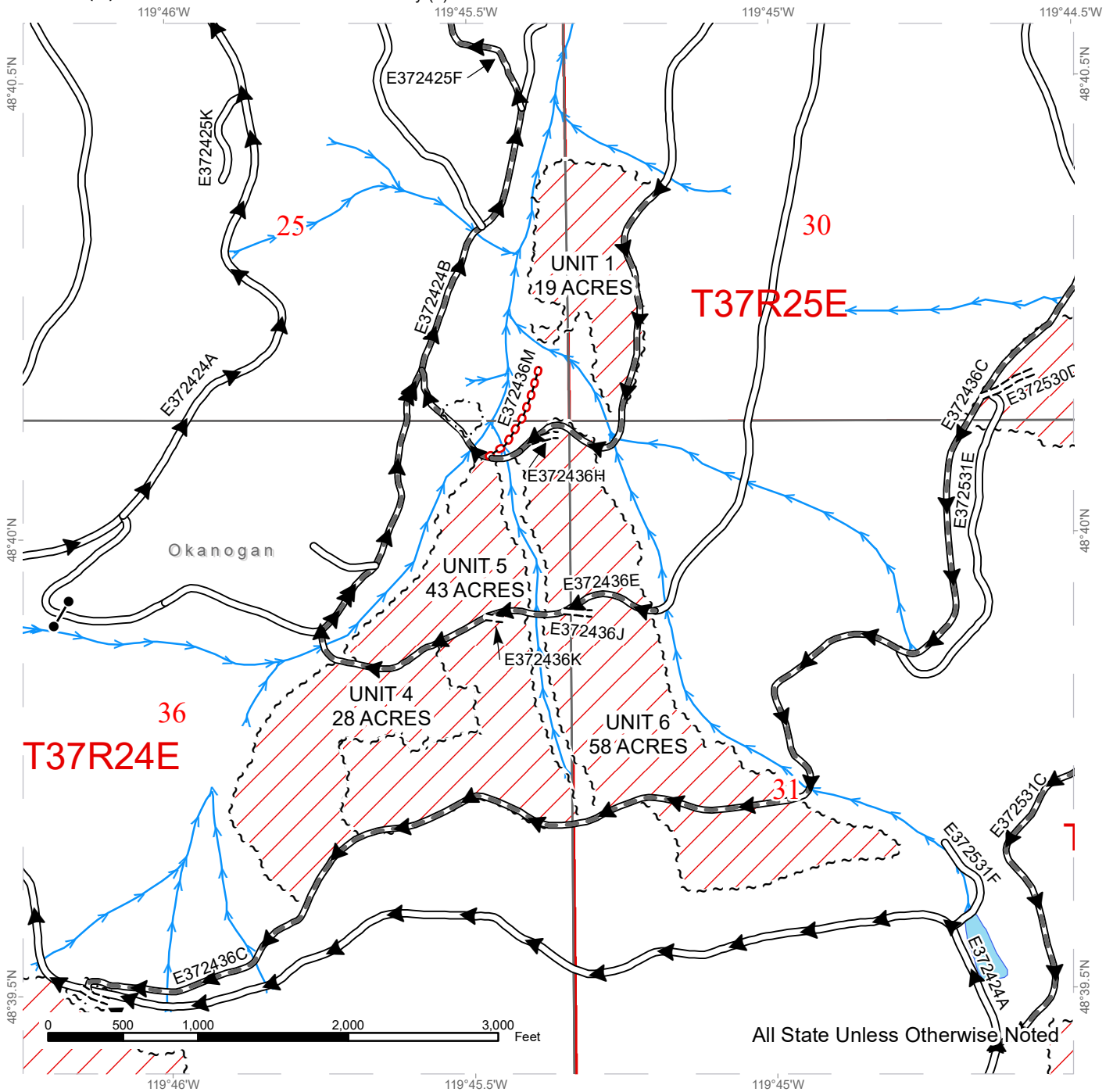
Public Land Survey Sections	Existing Roads	Streams
DNR Managed Lands	Required Pre-Haul Maintenance	Fence
Variable Retention Harvest	Required Construction	
Sale Boundary Tags	Required Abandonment	
	Haul Route	



TIMBER SALE MAP

SALE NAME: Q BALD GOAT
AGREEMENT #: 30-102503
TOWNSHIP(S): T36R25E, T37R24E, T37R25E
TRUST(S): Common School and Indemnity (3)

REGION: Northeast Region
COUNTY(S): Okanogan
ELEVATION RGE: 3640-5040



All State Unless Otherwise Noted

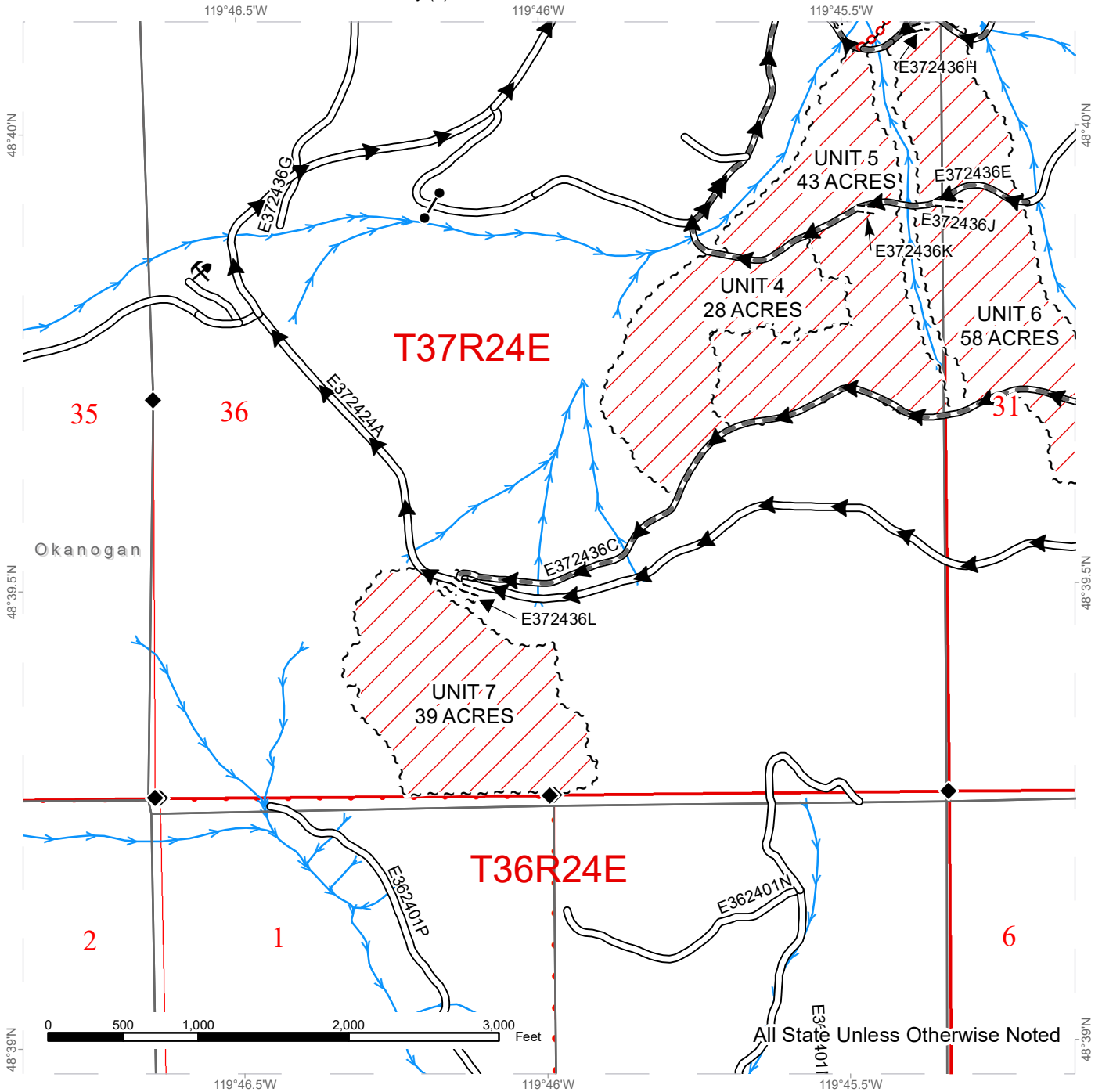
Public Land Survey Sections	Existing Roads	Streams
DNR Managed Lands	Required Pre-Haul Maintenance	Gate
Variable Retention Harvest	Required Construction	
Sale Boundary Tags	Required Abandonment	
Right of Way Tags = 2 Acres	Haul Route	



TIMBER SALE MAP

SALE NAME: Q BALD GOAT
AGREEMENT #: 30-102503
TOWNSHIP(S): T36R25E, T37R24E, T37R25E
TRUST(S): Common School and Indemnity (3)

REGION: Northeast Region
COUNTY(S): Okanogan
ELEVATION RGE: 3640-5040



All State Unless Otherwise Noted

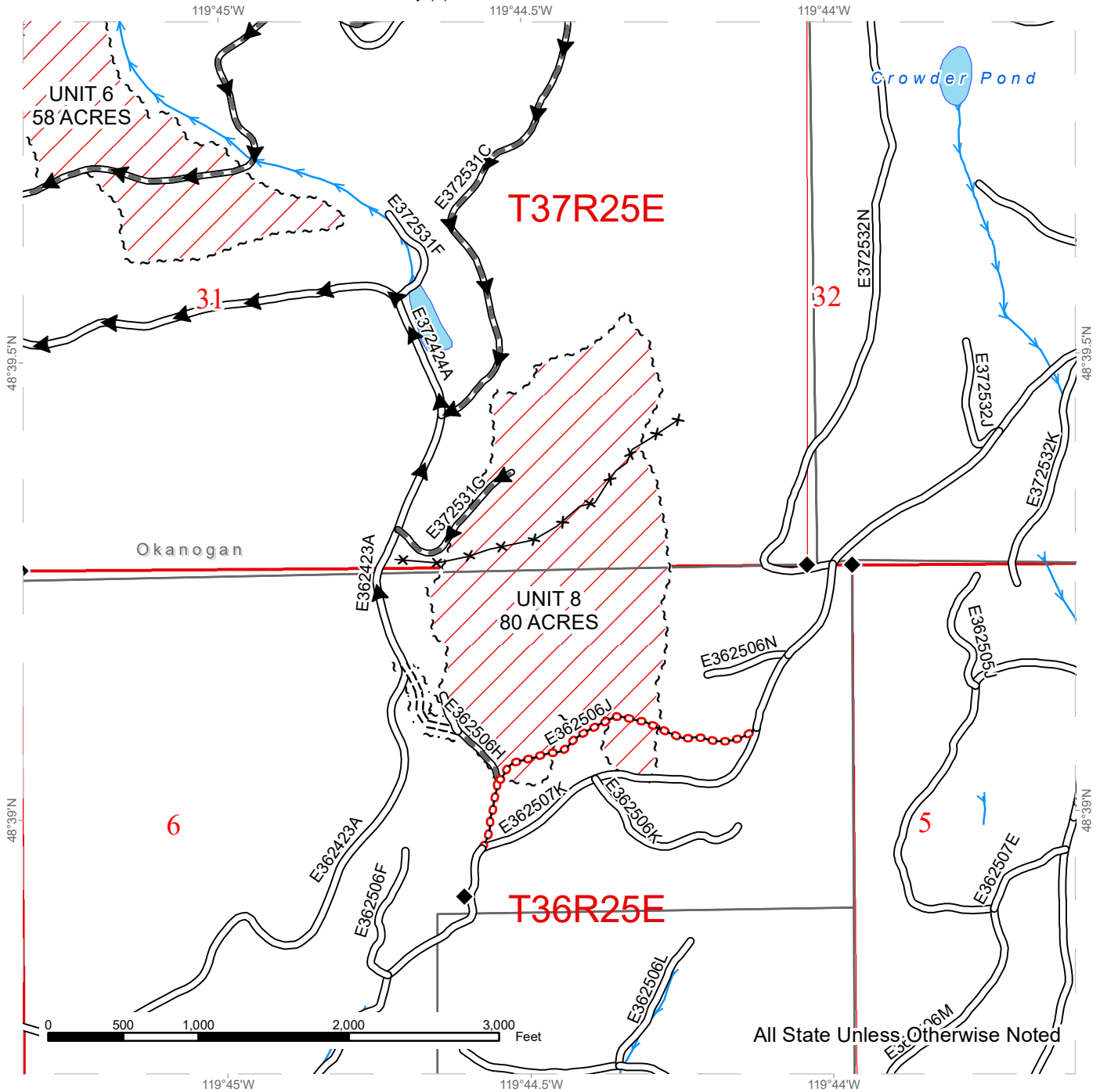
Public Land Survey Sections	Existing Roads	Streams
DNR Managed Lands	Required Pre-Haul Maintenance	Survey Monument
Variable Retention Harvest	Required Construction	Gate
Sale Boundary Tags	Required Abandonment	Rock Pit (Corporate)
Right of Way Tags = 2 Acres	Haul Route	



TIMBER SALE MAP

SALE NAME: Q BALD GOAT
AGREEMENT #: 30-102503
TOWNSHIP(S): T36R25E, T37R24E, T37R25E
TRUST(S): Common School and Indemnity (3)

REGION: Northeast Region
COUNTY(S): Okanogan
ELEVATION RGE: 3640-5040

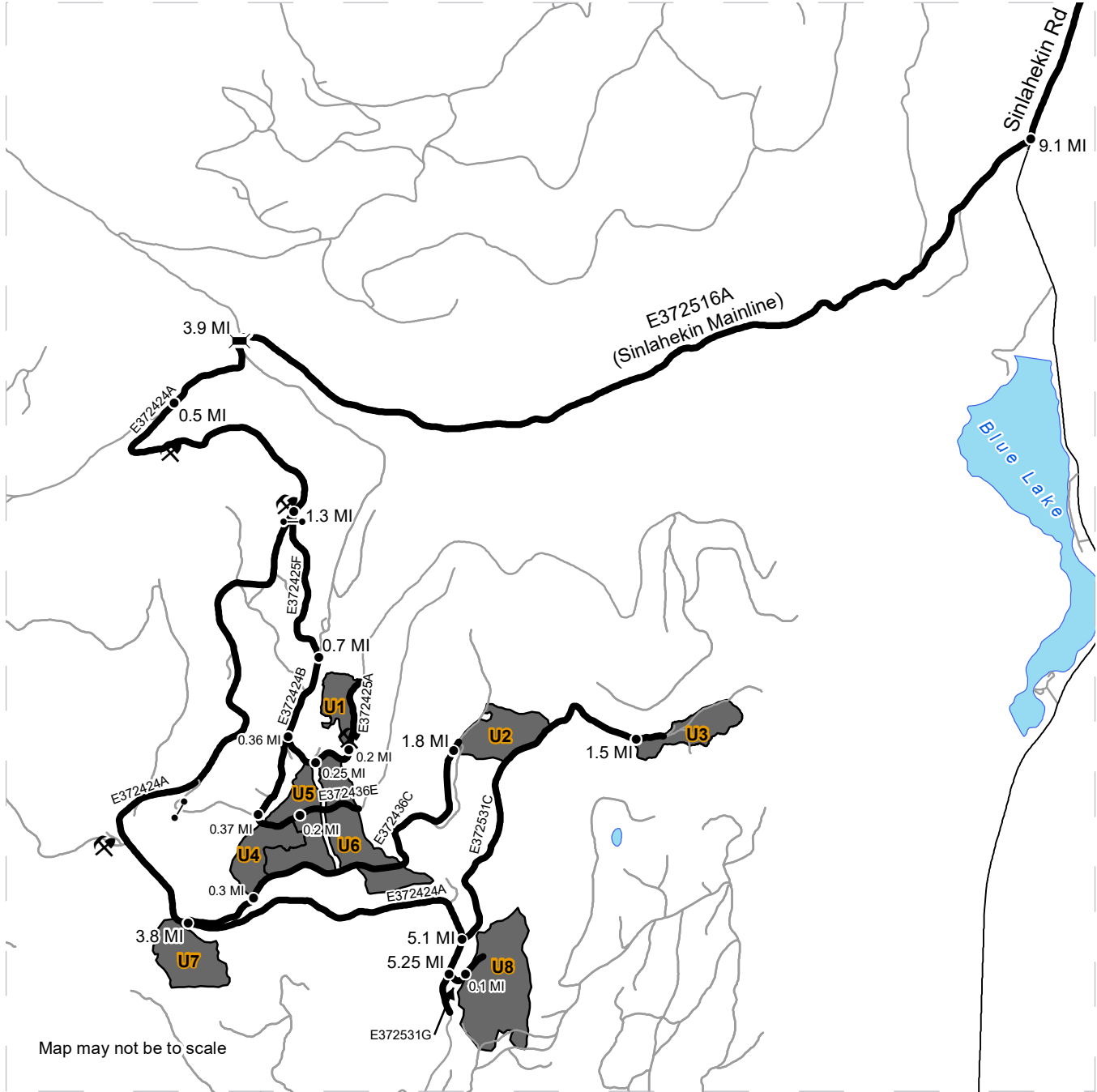


Public Land Survey Sections	Existing Roads	Streams
DNR Managed Lands	Required Pre-Haul Maintenance	Survey Monument
Variable Retention Harvest	Required Construction	Fence
Sale Boundary Tags	Required Abandonment	Haul Route
Right of Way Tags = 2 Acres		

DRIVING MAP

SALE NAME: Q BALD GOAT
AGREEMENT#: 30-102503
TOWNSHIP(S): T36R25E, T37R24E, T37R25E
TRUST(S): Common School and Indemnity (3)

REGION: Northeast Region
COUNTY(S): Okanogan
ELEVATION RGE: 3640-5040



Map may not be to scale

	Timber Sale Unit
	Haul Route
	Other Route
	Bridge
	Distance Indicator
	Gate
	Rock Pit

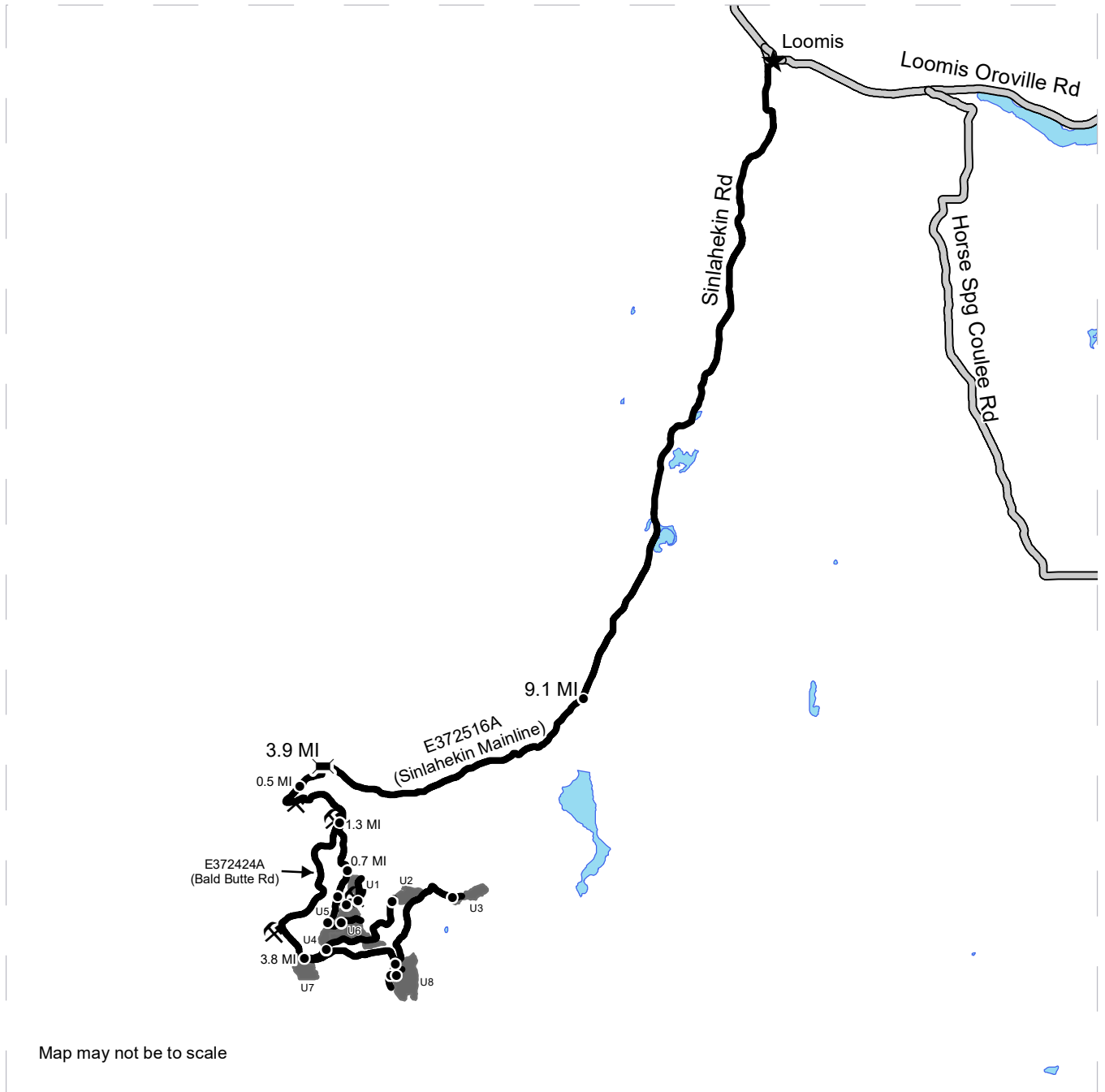
DRIVING DIRECTIONS:
 From Loomis, WA travel South on the Sinlahekin Rd road for 9.1 miles and turn right on E372516A (Sinlahekin Mainline) road. Travel 3.9 miles up E372516A (Sinlahekin Mainline) and turn left across the concrete bridge onto E372424A (Bald Butte rd.) for 0.5 miles stay left at the intersection of the E372424C rd. All mileage will be from start of E372424A (bald butte rd. and Concrete bridge) To access Units 1, and the bottom of units 4 and 5 travel 1.3 miles on E372424A and turn left onto E372425F road follow for 0.7 miles and then merge right onto E372425A road. Follow for 0.36 miles, take a left onto the E372425A road, and continue 0.25 miles to reach bottom of units 4 and 5. Continue another 0.2 miles to reach unit 1. To access the middle of Units 4/5/6 from intersection of E372425A and E372424B turn left onto E372424B. Drive for 0.37 miles then turn left onto E372436E. Follow for 0.2 miles and you will enter the units. To access the top of units 4/5/6, follow E372424A for 3.8 miles then turn left on E372436C. Follow this for 0.3 miles and you will enter the units on the downhill side of the road. To access unit 2 follow E372424A for 3.8 miles then turn left on E372436C. Follow this for 1.8 miles and the unit will be on your right. To access Unit 7, drive on E372424A for 3.8 miles, the unit will be on the left. To access Unit 3, drive on E372424A for 5.1 miles, then turn left onto E372531C (Blue Goat Ridge Rd). Follow for 1.5 miles and you will enter Unit 3. To access Unit 8, travel 5.25 miles on the E372424A road then turn left on road E372531G. You will enter the unit after 0.1 miles



DRIVING MAP

SALE NAME: Q BALD GOAT
AGREEMENT#: 30-102503
TOWNSHIP(S): T36R25E, T37R24E, T37R25E
TRUST(S): Common School and Indemnity (3)

REGION: Northeast Region
COUNTY(S): Okanogan
ELEVATION RGE: 3640-5040



Map may not be to scale

	Timber Sale Unit
	Haul Route
	County Road
	Bridge
	Distance Indicator
	Rock Pit
	Town

DRIVING DIRECTIONS:
 From Loomis, WA travel South on the Sinlahekin Rd road for 9.1 miles and turn right on E372516A (Sinlahekin Mainline) road. Travel 3.9 miles up E372516A (Sinlahekin Mainline) and turn left across the concrete bridge onto E372424A (Bald Butte rd.) for 0.5 miles stay left at the intersection of the E372424C rd. All mileage will be from start of E372424A (bald butte rd. and Concrete bridge) To access Units 1, and the bottom of units 4 and 5 travel 1.3 miles on E372424A and turn left onto E372425F road follow for 0.7 miles and then mergeright onto E372424B road. Follow for 0.36 miles, take a left onto the E372425A road, and continue 0.25 miles to reach bottom of units 4 and 5. Continue another 0.2 miles to reach unit 1. To access the middle of Units 4/5/6 from intersection of E372425A and E372424B turn left onto E372424B. Drive for 0.37 miles then turn left onto E372436E. Follow for 0.2 miles and you will enter the units. To access the top of units 4/5/6, follow E372424A for 3.8 miles then turn left on E372436C. Follow this for 0.3 miles and you will enter the units on the downhill side of the road. To access unit 2 follow E372424A for 3.8 miles then turn left on E372436C. Follow this for 1.8 miles and the unit will be on your right. To access Unit 7, drive on E372424A for 3.8 miles, the unit will be on the left. To access Unit 3, drive on E372424A for 5.1 miles, then turn left onto E372531C (Blue Goat Ridge Rd). Follow for 1.5 miles and you will enter Unit 3. To access Unit 8, travel 5.25 miles on the E372424A road then turn left on road E372531G. You will enter the unit after 0.1 miles





TIMBER NOTICE OF SALE

SALE NAME: BULL WACKER

AGREEMENT NO: 30-83240

AUCTION: February 24, 2022 starting at 10:00 a.m., **COUNTY:** Pacific
Pacific Cascade Region Office, Castle Rock, WA

SALE LOCATION: Sale located approximately 5 miles north of Naselle, WA

**PRODUCTS SOLD
AND SALE AREA:**

All timber, except leave trees bounded by yellow leave tree area tags, leave trees marked with blue paint, snags, stumps, and down timber existing five years prior to day of sale, bounded by the following:

Unit 1, white "Timber Sale Boundary" tags and pink flagging;

Unit 2, white "Timber Sale Boundary" tags and pink flagging, R-4200 road and repro;

Unit 3 ROW, orange "Right of Way" tags and orange flagging;

All forest products above located on part(s) of Sections 9, 16 and 21 all in Township 11 North, Range 9 West, W.M., containing 140 acres, more or less.

CERTIFICATION: This sale is certified under the Sustainable Forestry Initiative® program Standard (cert no: PwC-SFIFM-513)

ESTIMATED SALE VOLUMES AND QUALITY:

Species	Avg DBH	Ring Count	Total MBF	MBF by Grade								
				1P	2P	3P	SM	1S	2S	3S	4S	UT
Hemlock	15.6		3,350						1,203	1,727	360	60
Douglas fir	16.7	6	1,621						597	823	182	19
Spruce	19.8		770						533	203	24	10
Red alder	12.4		87							8	78	1
Red cedar	13.4		23							10	13	
Sale Total			5,851									

MINIMUM BID: \$1,467,000.00 **BID METHOD:** Sealed Bids

PERFORMANCE SECURITY: \$100,000.00 **SALE TYPE:** Lump Sum

EXPIRATION DATE: October 31, 2023 **ALLOCATION:** Export Restricted

BID DEPOSIT: \$146,700.00 or Bid Bond. Said deposit shall constitute an opening bid at the appraised price.

HARVEST METHOD: Cable, Shovel, Track skidder, Cable-Assist, and Rubber tired skidder. Harvesting activities are estimated to be approximately 25% ground-based and 75% cable harvesting. Ground-based equipment is restricted to slopes of 40% and less, and may only operate during dry soil conditions. See Clause H-140 for further harvest specifications. Yarding will not be permitted from November 1 to April 30 unless authorized in writing by the Contract Administrator.



TIMBER NOTICE OF SALE

ROADS: 23.47 stations of required construction. 36.21 stations of optional construction. 33.70 stations of optional reconstruction. 396.82 stations of required prehaul maintenance. 11.88 stations of abandonment, if built. Rock used in accordance with the quantities on the ROCK LIST may be obtained from the Radar Ridge Pit located in the SE 1/4 of Section 17, T11N, R9W, W.M. at no charge to the Purchaser. Purchaser shall obtain written approval from the Contract Administrator for the use of material from any other source. Road construction will not be permitted from October 1 to April 30 unless authorized in writing by the Contract Administrator. The hauling of forest products will not be permitted from November 1 to April 30 unless authorized in writing by the Contract Administrator.

ACREAGE DETERMINATION

CRUISE METHOD: The sale acres were determined by GPS. The sale area was cruised using a variable plot cruise method.

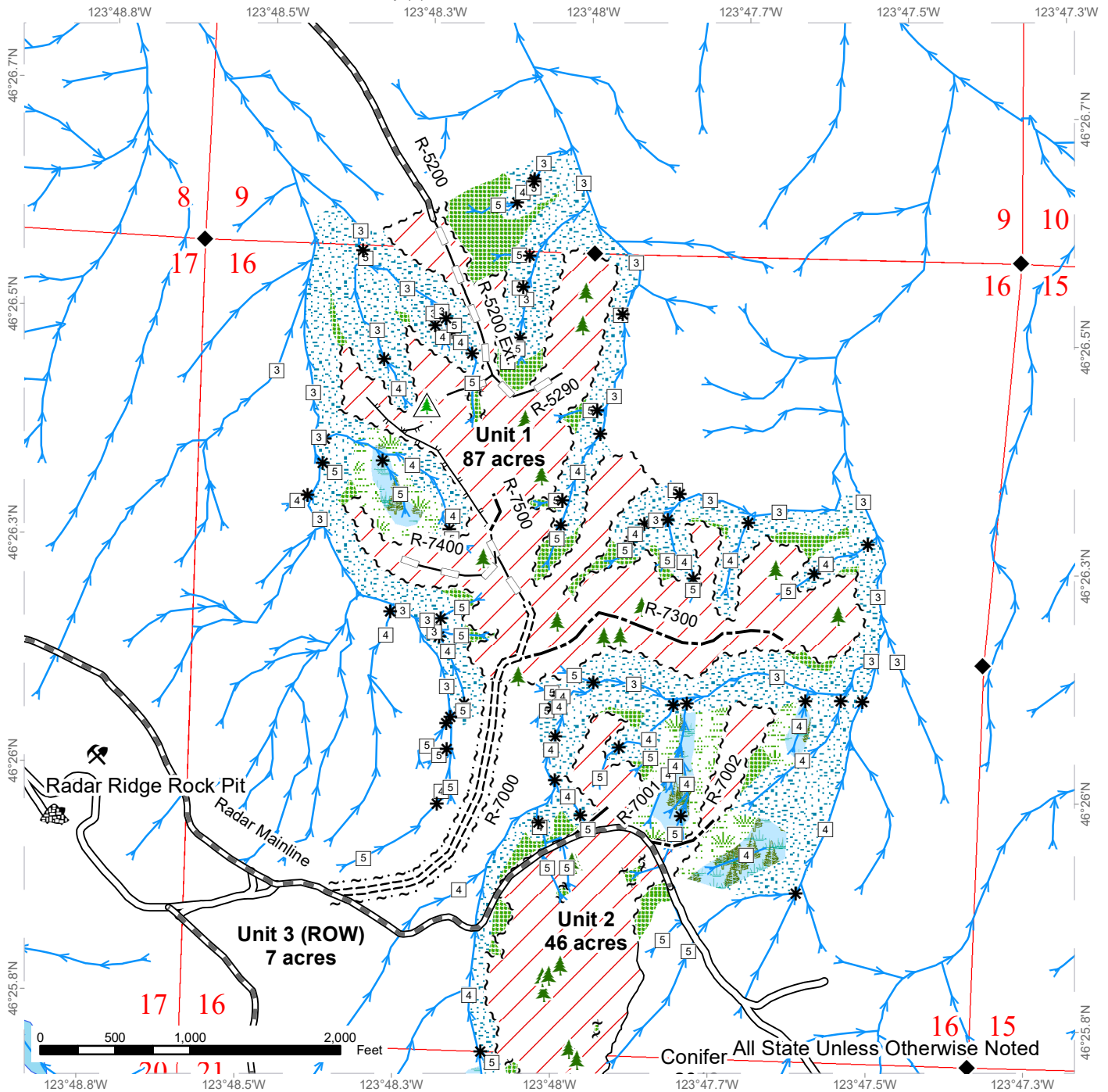
FEES: \$99,467.00 is due on day of sale. \$9.00 per MBF is due upon removal. These are in addition to the bid price.

SPECIAL REMARKS: This sale contains approximately 366 MBF of DF HQ 2 Saw and 378 MBF DF HQ 3 Saw.

TIMBER SALE MAP

SALE NAME: BULL WACKER
AGREEMENT#: 30-083240
TOWNSHIP(S): T11R9W
TRUST(S): Common School and Indemnity (3)

REGION: Pacific Cascade Region
COUNTY(S): Pacific
ELEVATION RGE: 705-1257

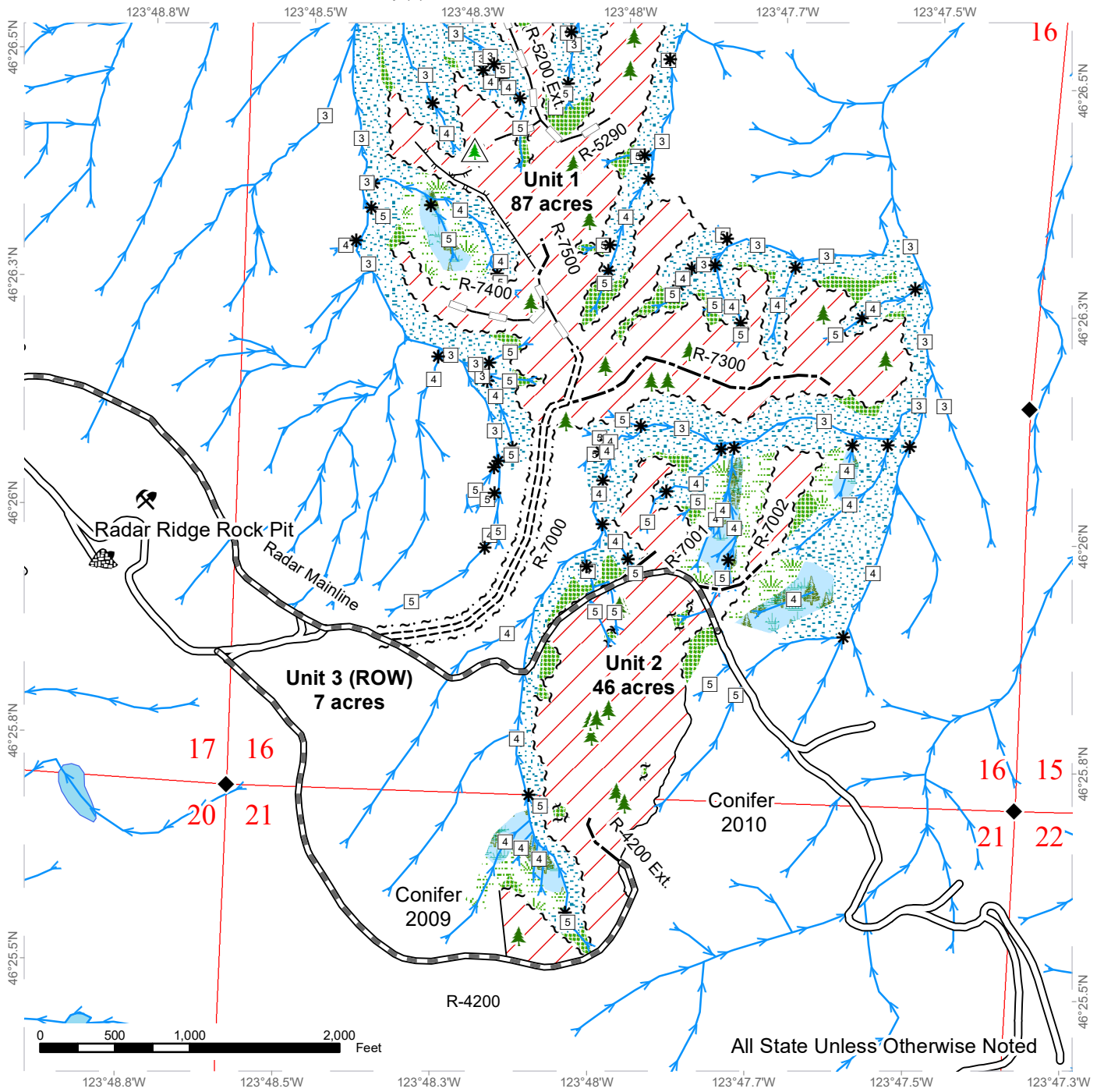


	Variable Retention Harvest		Existing Roads		Survey Monument
	Leave Tree Area		Required Pre-Haul Maintenance		Leave Tree Area <1/4-acre
	Riparian Mgt Zone		Required Construction		Non-Tradeable Leave Trees
	Forested Wetland		Optional Construction		Rock Pit
	Wetland Mgt Zone		Optional Reconstruction		Stockpile
	Sale Boundary Tags		Designated Skid Trail		Streams
	Timber Type Change		Stream Type		Stream Type Break
	Leave Tree Tags				
	Right of Way Tags				

TIMBER SALE MAP

SALE NAME: BULL WACKER
AGREEMENT#: 30-083240
TOWNSHIP(S): T11R9W
TRUST(S): Common School and Indemnity (3)

REGION: Pacific Cascade Region
COUNTY(S): Pacific
ELEVATION RGE: 705-1257



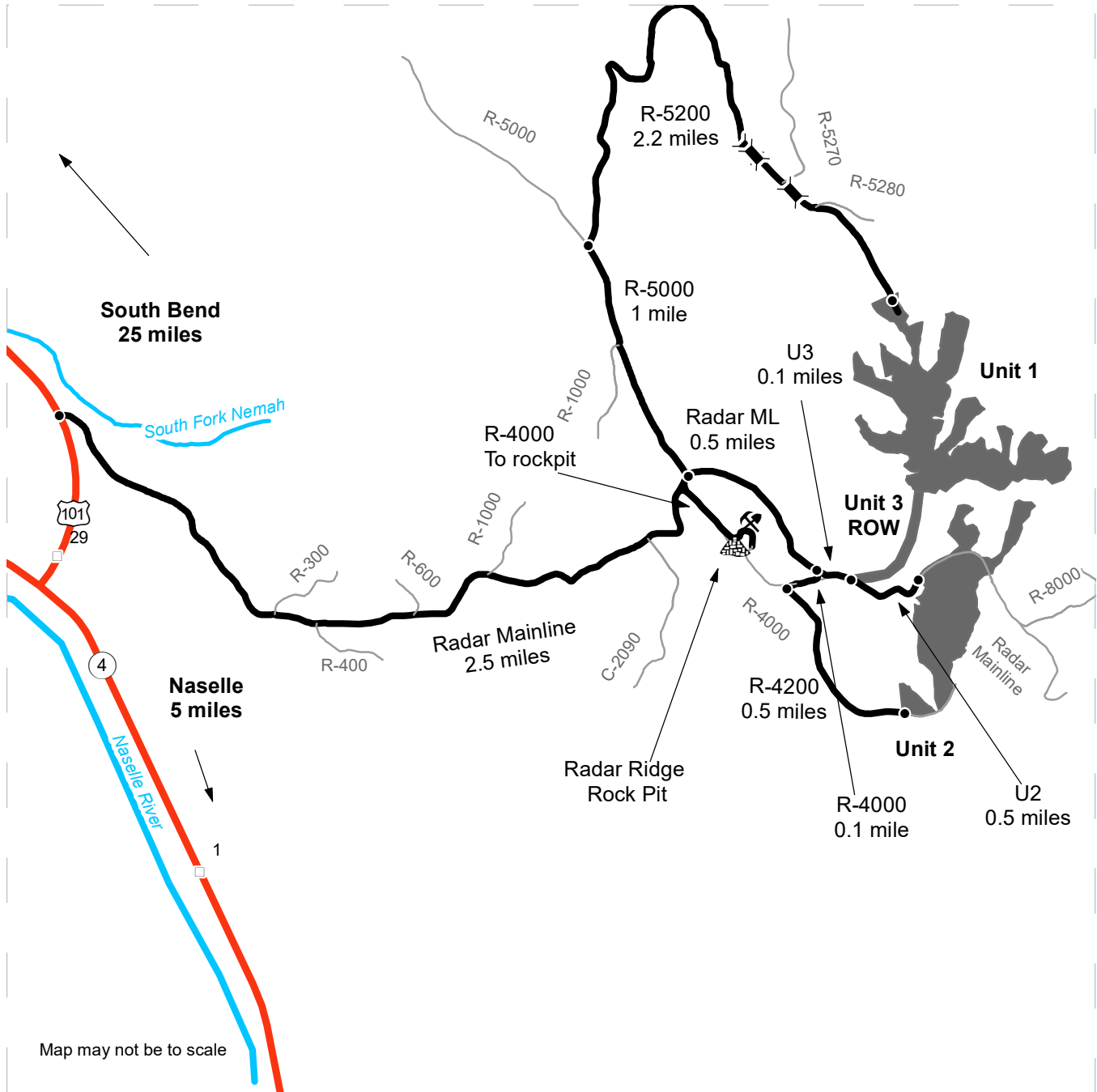
Variable Retention Harvest	Existing Roads	Survey Monument
Leave Tree Area	Required Pre-Haul Maintenance	Leave Tree Area <1/4-acre
Riparian Mgt Zone	Required Construction	Non-Tradeable Leave Trees
Forested Wetland	Optional Construction	Rock Pit
Wetland Mgt Zone	Optional Reconstruction	Stockpile
Sale Boundary Tags	Designated Skid Trail	
Timber Type Change	Streams	
Leave Tree Tags	Stream Type	
Right of Way Tags	Stream Type Break	



DRIVING MAP

SALE NAME: BULL WACKER
AGREEMENT#: 30-083240
TOWNSHIP(S): T11R9W
TRUST(S): Common School and Indemnity (3)

REGION: Pacific Cascade Region
COUNTY(S): Pacific
ELEVATION RGE: 705-1257



Map may not be to scale

	Timber Sale Unit
	Haul Route
	Other Road
	Milepost Markers
	Bridge
	Distance Indicator
	Rock Pit
	Stockpile

DRIVING DIRECTIONS:

"From US 101 north of mile post 29: Turn east (Right if coming from the south, left if coming from the north) onto the Radar Mainline. Continue 2.5 miles on the Radar Mainline to the top of the ridge.
 Radar Ridge Pit: Turn right onto the R-4000. For units, continue on the Radar Mainline.
 U1: Turn left onto the R-5000. Follow the R-5000 for 1 mile. Turn right onto the R-5200. Follow the R-5200 for 2.2 miles until the end of the road.
 U2: On the Radar Mainline, continue driving for 0.5 mile. To the top of the unit, turn right onto the second R-4000 entrance. Follow for 0.1 mile. Turn left onto R-4200 and follow for 0.5 mile.
 To the Bottom of the unit, continue on the Radar Mainline for 0.5 mile.
 U3 (ROW): 0.1 mile past the intersection of Radar Mainline and second R-4000 entrance."





TIMBER NOTICE OF SALE

SALE NAME: HULLIN FIR

AGREEMENT NO: 30-92187

AUCTION: February 24, 2022 starting at 10:00 a.m., COUNTY: Pacific Pacific Cascade Region Office, Castle Rock, WA

SALE LOCATION: Sale located approximately 13 miles northeast of Naselle, WA

PRODUCTS SOLD AND SALE AREA: All timber, except snags and leave trees marked with a single ring of blue paint, bounded by the following:

Unit 1, white "Timber Sale Boundary" tags with pink flagging, reprod and the 5970, 5972.5, 5973, and 5973A road;

Unit 2, white "Timber Sale Boundary" tags with pink flagging and reprod;

All forest products above located on part(s) of Sections 18, 19 and 30 all in Township 11 North, Range 7 West, Sections 24 all in Township 11 North, Range 8 West, W.M., containing 58 acres, more or less.

CERTIFICATION: This sale is certified under the Sustainable Forestry Initiative® program Standard (cert no: PwC-SFIFM-513)

ESTIMATED SALE VOLUMES AND QUALITY:

Table with columns: Species, Avg DBH, Ring Count, Total MBF, and MBF by Grade (1P, 2P, 3P, SM, 1S, 2S, 3S, 4S, UT). Rows include Hemlock, Douglas fir, Red alder, Spruce, and Sale Total.

MINIMUM BID: \$1,065,000.00 BID METHOD: Sealed Bids

PERFORMANCE SECURITY: \$100,000.00 SALE TYPE: Lump Sum

EXPIRATION DATE: October 31, 2023 ALLOCATION: Export Restricted

BID DEPOSIT: \$106,500.00 or Bid Bond. Said deposit shall constitute an opening bid at the appraised price.

HARVEST METHOD: Shovel, and Ground based equipment. Harvesting activities are estimated to be 100% ground based yarding. Ground based equipment is restricted to slopes of 40% and less, and shall operate only during dry soil conditions. See Clause H-140 for further harvest requirements. Ground Based Yarding will not be permitted from November 1 to April 30 unless authorized in writing by the Contract Administrator.

ROADS: 9.00 stations of required construction. 5.08 stations of optional construction. 29.10 stations of optional reconstruction. 241.71 stations of required prehaul maintenance. Rock used in accordance with the quantities in the ROCK LIST under this contract may



TIMBER NOTICE OF SALE

be obtained from any commercial pit at the Purchaser's expense. Rock Sources will be subject to written approval by the Contract Administrator before their use. At existing road approaches to county roads and state highways; any mud, dirt, rock or other material tracked or spilled on the asphalt surface shall be removed immediately by the Purchaser. Pavement repair on the 4900 is required. Road construction will not be permitted from November 1 to April 30 unless authorized in writing by the Contract Administrator. The hauling of forest products will not be permitted from November 1 to April 30 unless authorized in writing by the Contract Administrator.

ACREAGE DETERMINATION

CRUISE METHOD: The sale acres were determined by GPS. The sale area was cruised using a variable plot cruise method.

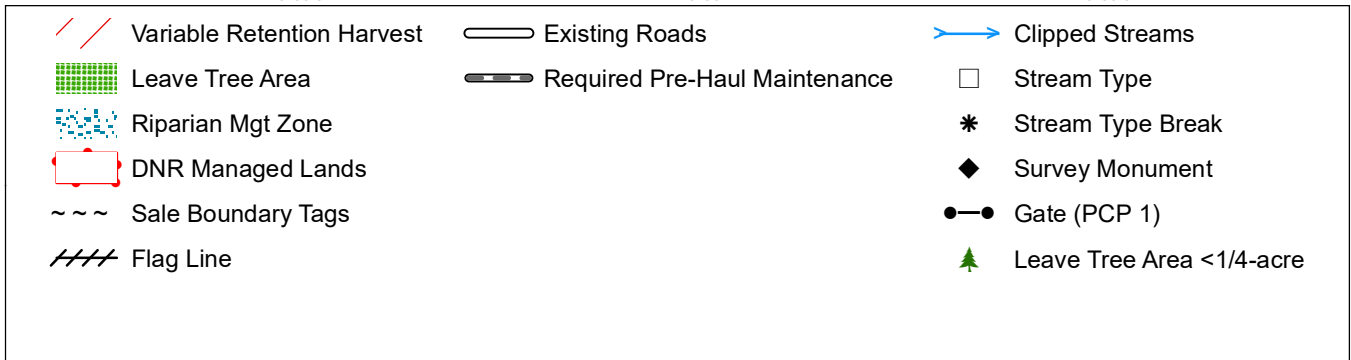
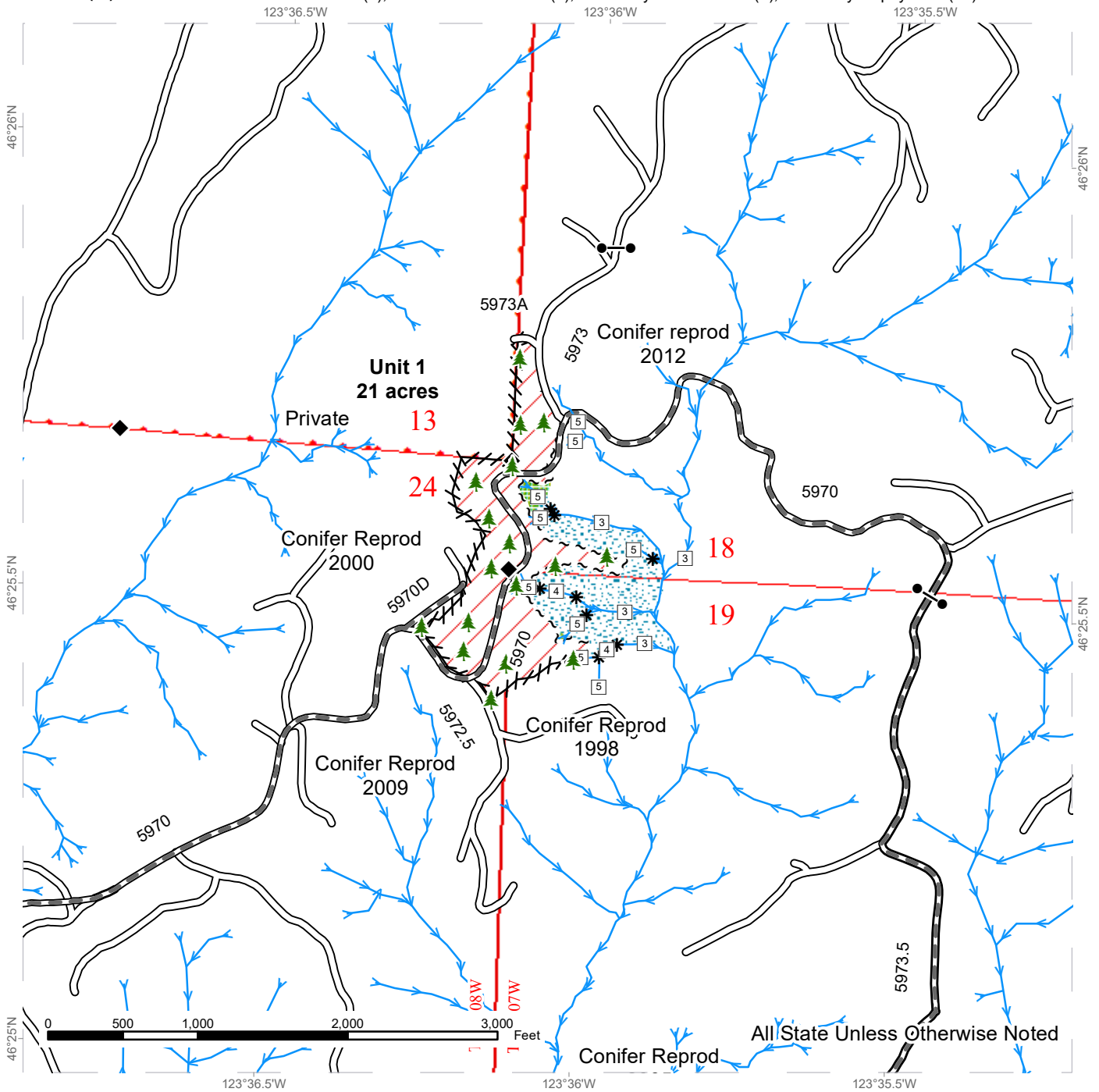
FEES: \$68,680.00 is due on day of sale. \$9.00 per MBF is due upon removal. These are in addition to the bid price.

SPECIAL REMARKS: This sale contains approximately 17 MBF of SM western hemlock and approximately 343 MBF high quality 2 saw, 3 saw and SM Douglas-fir. Gate keys may be obtained from the Pacific Cascade Region office. See driving map for gate locations.

TIMBER SALE MAP

SALE NAME: HULLIN FIR
AGREEMENT #: 30-092187
TOWNSHIP(S): T11R7W, T11R8W
TRUST(S): State Forest Purchase (2), State Forest Transfer (1), University - Transferred (5), University Repayment (41)

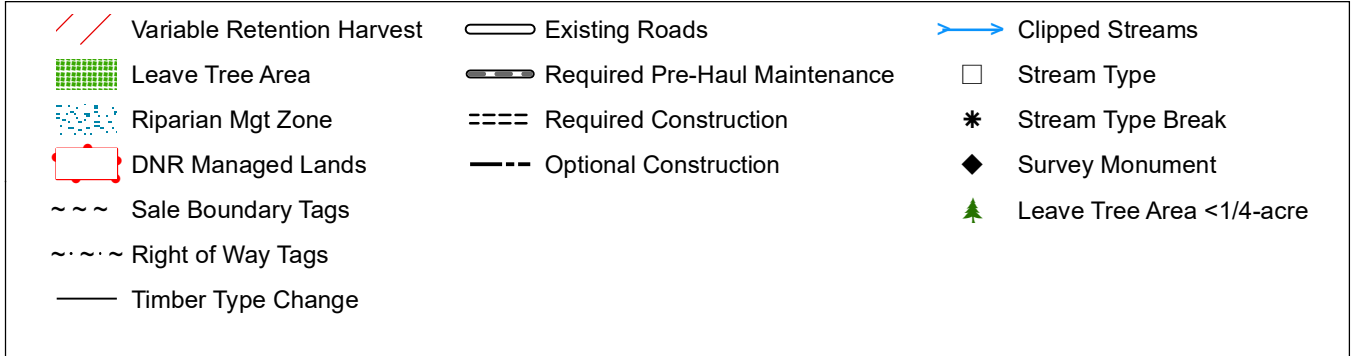
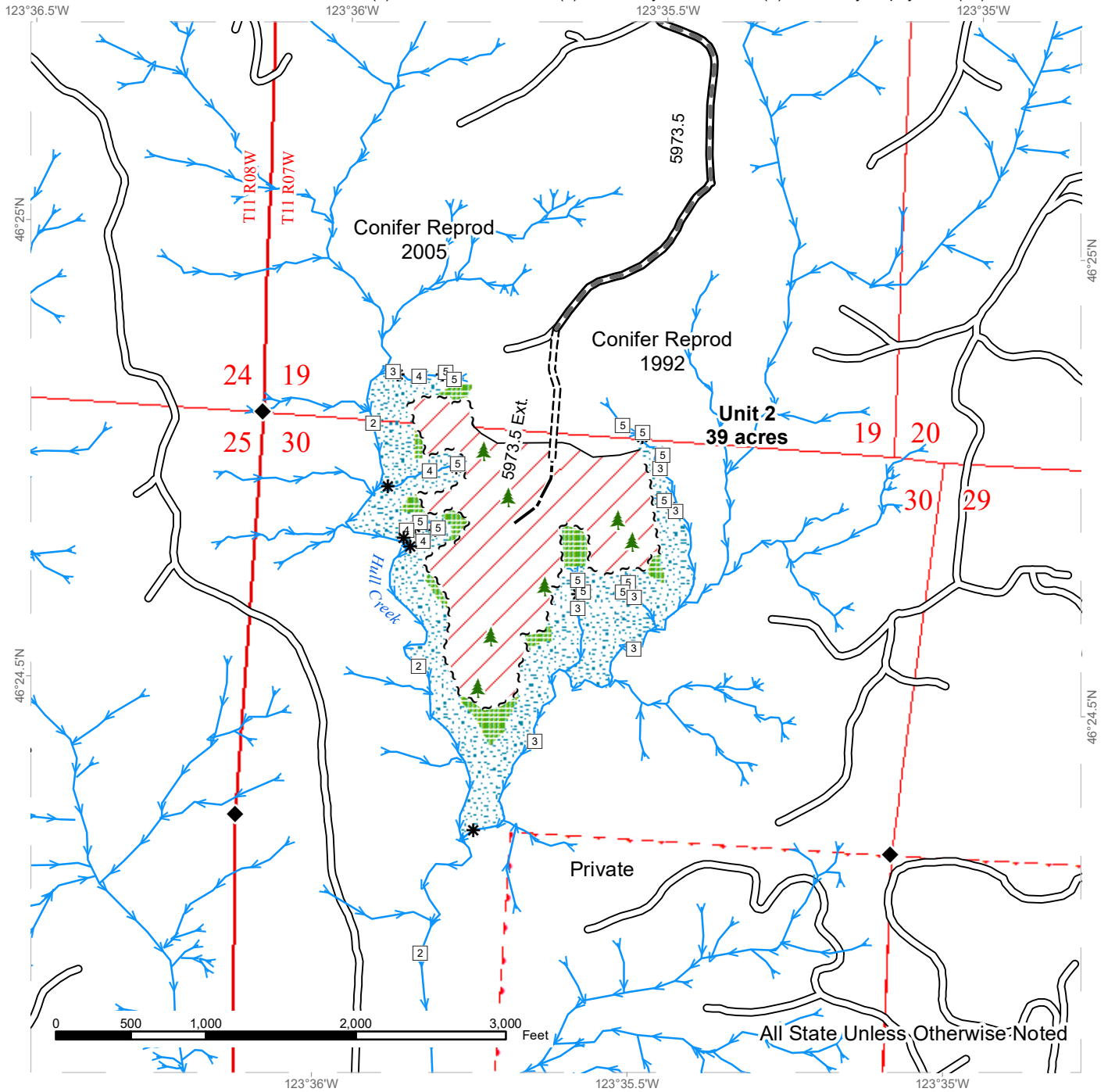
REGION: Pacific Cascade Region
COUNTY(S): Pacific
ELEVATION RGE: 377-811



TIMBER SALE MAP

SALE NAME: HULLIN FIR
AGREEMENT #: 30-092187
TOWNSHIP(S): T11R7W, T11R8W
TRUST(S): State Forest Purchase (2), State Forest Transfer (1), University - Transferred (5), University Repayment (41)

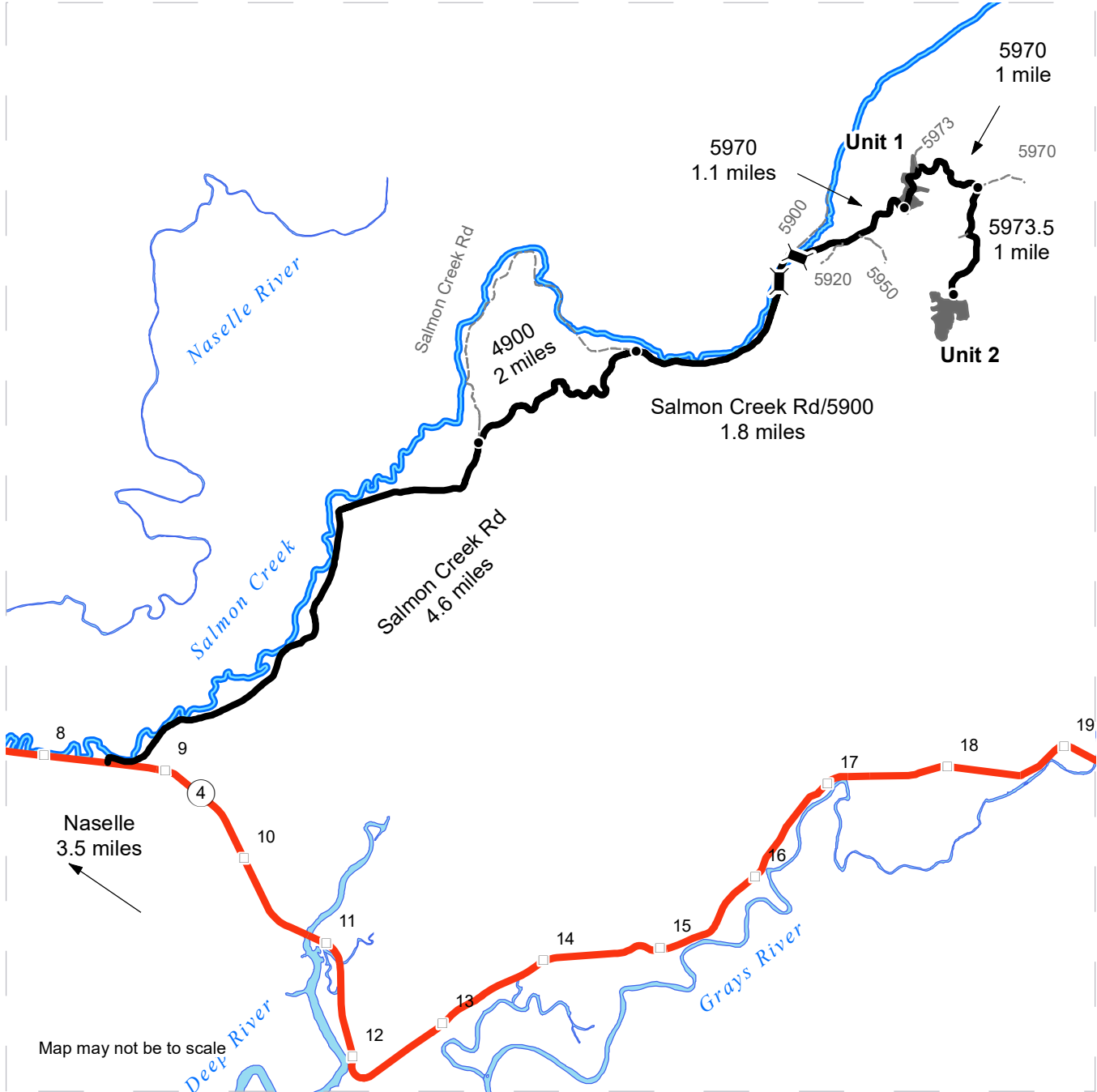
REGION: Pacific Cascade Region
COUNTY(S): Pacific
ELEVATION RGE: 377-811



DRIVING MAP

SALE NAME: HULLIN FIR
AGREEMENT#: 30-092187
TOWNSHIP(S): T11R7W, T11R8W
TRUST(S): State Forest Purchase (2), State Forest Transfer (1), University - Transferred (5), University Repayment (41)

REGION: Pacific Cascade Region
COUNTY(S): Pacific
ELEVATION RGE: 377-811



- Timber Sale Unit
- Haul Route
- Other Route
- Milepost Markers
- +
 Bridge
- Distance Indicator
- Highway

DRIVING DIRECTIONS:

"From State Route 4 between mile marker 8 and 9: Turn north onto Salmon Creek County Rd. Continue on the Salmon Creek County Rd for 4.6 miles to the 4900. Turn right onto the 4900 and continue 2.0 miles. Stay to the right back onto the Salmon Creek County Rd/5900 and continue 1.8 miles to the 5970. Follow the 5970 1.1 miles to Unit 1.

From Unit 1 continue down the 5970 for 1.0 miles until the 5973.5. Turn right onto the the 5973.5 and follow to the end of the road (approx. 1 mile) to Unit 2."





TIMBER NOTICE OF SALE

SALE NAME: HIGH CALIBER

AGREEMENT NO: 30-101112

AUCTION: February 23, 2022 starting at 10:00 a.m., COUNTY: Snohomish Northwest Region Office, Sedro Woolley, WA

SALE LOCATION: Sale located approximately 6 miles , by road, northeast of Sultan, WA.

PRODUCTS SOLD AND SALE AREA: All timber (including preexisting dead and down cedar trees and cedar logs and cedar stumps) bounded by white timber sale boundary tags and a flag line, except preexisting cedar snags, trees marked with blue paint on the bole and root collar, and forest products tagged out by yellow leave tree area tags in Unit #1.

All forest products above located on part(s) of Sections 15 all in Township 28 North, Range 8 East, W.M., containing 159 acres, more or less.

CERTIFICATION: This sale is certified under the Sustainable Forestry Initiative® program Standard (cert no: PwC-SFIFM-513)

ESTIMATED SALE VOLUMES AND QUALITY:

Table with columns: Species, Avg DBH, Ring Count, Total MBF, and MBF by Grade (1P, 2P, 3P, SM, 1S, 2S, 3S, 4S, UT). Rows include Douglas fir, Hemlock, Maple, and Sale Total.

MINIMUM BID: \$929,000.00 BID METHOD: Sealed Bids

PERFORMANCE SECURITY: \$100,000.00 SALE TYPE: Lump Sum

EXPIRATION DATE: March 31, 2024 ALLOCATION: Export Restricted

BID DEPOSIT: \$92,900.00 or Bid Bond. Said deposit shall constitute an opening bid at the appraised price.

HARVEST METHOD: Cable; shovel, tracked skidder (See below for restrictions) or “6-wheeled rubber tired skidders with over-the-tire tracks spanning both sets of rear tires” (See below for restrictions) on sustained slopes 35% or less; also, a feller-buncher may be utilized on sustained slopes 35% or less.

Yarding will not be permitted from November 1 to March 31 by tracked skidder or “6-wheeled rubber tired skidders with over-the-tire tracks spanning both sets of rear tires”.

ROADS: 63.25 stations of optional construction. 67.90 stations of required prehaul maintenance. Rock may be obtained from the following source(s) on State land at no charge to the Purchaser: MC-12 Gravel Pit at station 65+00 of the MC-ML Road.

Development of an existing rock source will involve clearing, stripping, and processing rock to generate riprap and gravel ballast rock.



TIMBER NOTICE OF SALE

An estimated total quantity of rock needed for this proposal: 73 cubic yards of riprap and 5,800 cubic yards of ballast rock.

Road work and the hauling of rock will not be permitted from November 1 to March 31 unless authorized in writing by the Contract Administrator to reduce soil damage and siltation. The hauling of forest products will not be permitted from November 1 to March 31 unless authorized in writing by the Contract Administrator to reduce soil damage and siltation.

ACREAGE DETERMINATION

CRUISE METHOD: Acres determined by GPS traverse for unit. Cruise was conducted via variable plot sample type. Cruise acres are based on FMA (Forest Management Activity) acres including leave tree areas. Leave tree volume is not included in the cruise. See Cruise Narrative for further details. Shapefiles of units are available upon request after the BNR meeting in which the sale is presented.

FEES: \$53,448.00 is due on day of sale. \$9.00 per MBF is due upon removal. These are in addition to the bid price.

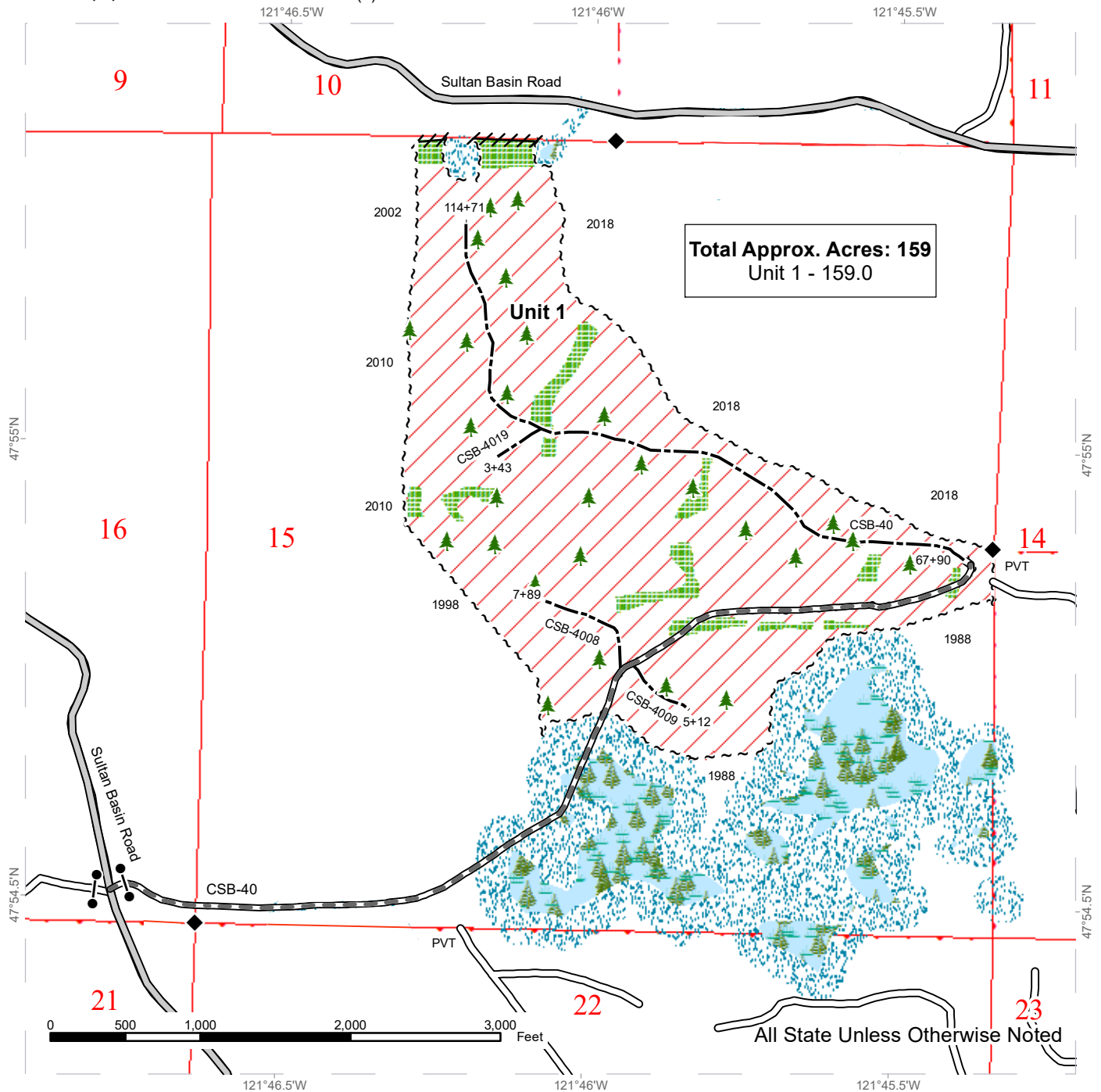
SPECIAL REMARKS:

1. The last take tree along the property line is marked with two red bands of paint and a yellow "T".
2. CEDAR SALVAGE: The DNR's standard conversion factor is 600 board feet per cord (cord = 128 cubic feet). Cedar salvage forest products removed on a cord basis will be converted to MBF for payment purposes. All cedar salvage is available for removal in the Unit, except for cedar snags and except material within tagged Leave Tree Areas. No estimate of cedar salvage quantity was made, but field staff noted that a non-significant amount was observed.
3. Slash may be placed in larger piles and at a lower density. No burning of piles post-harvest will be required.
4. Yarding will not be permitted from November 1 to March 31 by tracked skidder or "6-wheeled rubber tired skidders with over-the-tire tracks spanning both sets of rear tires".
5. The entirety of the sale is harvestable by ground-based equipment.
6. The northern 2/3's of the sale falls within the former Retread timber sale, dated 2002. This was a commercial thin at age 27, so the stand has greater-than-average spacing and volumetric gains from the past 20 years have been achieved.

TIMBER SALE MAP

SALE NAME: HIGH CALIBER
AGREEMENT #: 30-101112
TOWNSHIP(S): T28R8E
TRUST(S): State Forest Transfer (1)

REGION: Northwest Region
COUNTY(S): Snohomish
ELEVATION RGE: 680-840



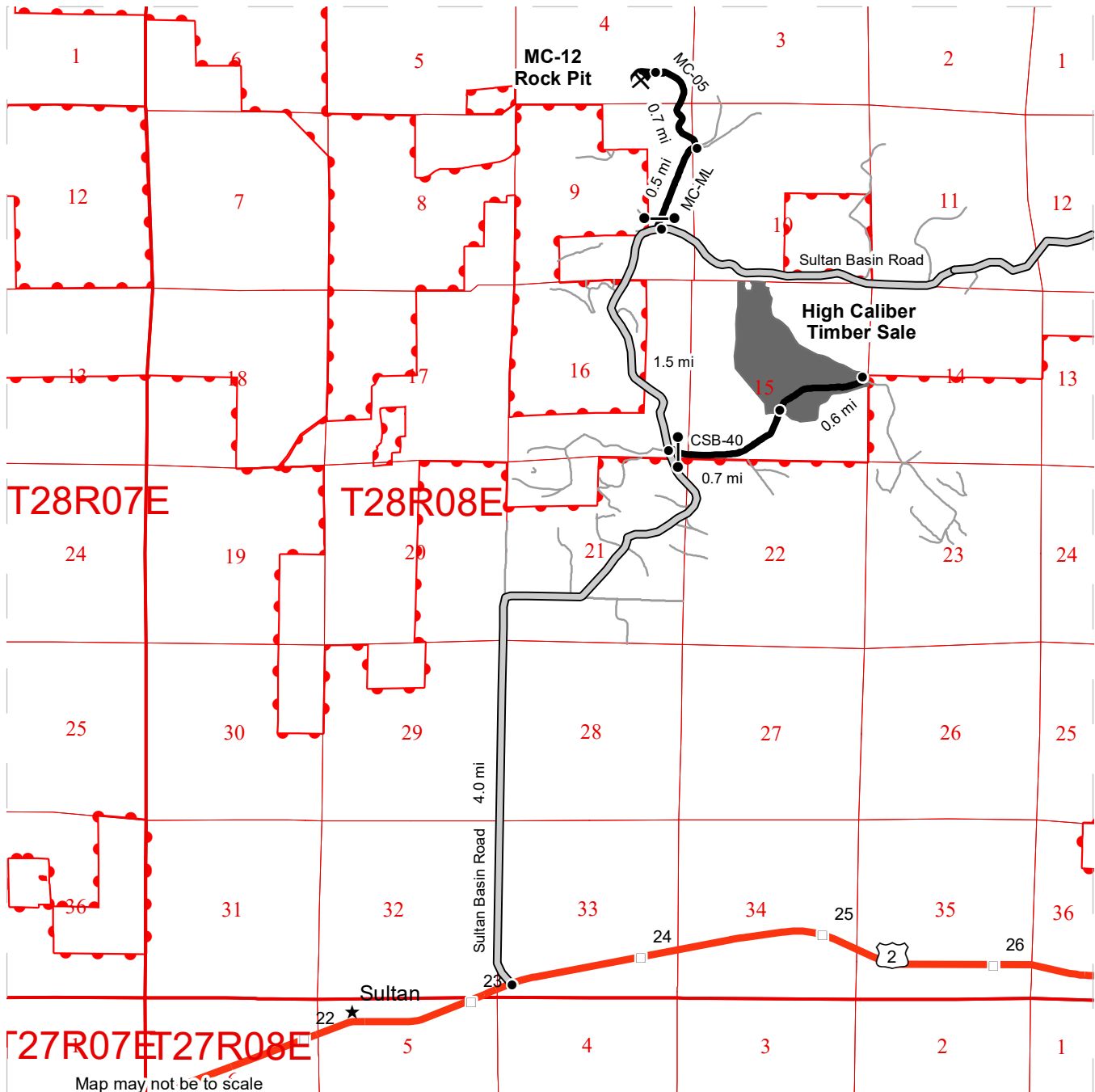
	Variable Retention Harvest		County Road		Sale Boundary Tags
	Leave Tree Area		Existing Roads		Flag Line
	Gate (F1-3)		Required Pre-Haul Maintenance		DNR Managed Lands
	Survey Monument		Optional Construction		
	Wetlands				
	WMZs				
	Scattered Leave Trees				



DRIVING MAP

SALE NAME: HIGH CALIBER
AGREEMENT#: 30-101112
TOWNSHIP(S): T28R8E
TRUST(S): State Forest Transfer (1)

REGION: Northwest Region
COUNTY(S): Snohomish
ELEVATION RGE: 680-840



Map may not be to scale

- Timber Sale Unit
- Haul Route
- Other Road
- County Road
- State Lands
- Milepost Markers
- Town
- Distance Indicator
- Gate (F1-3)
- Highway 2
- Rock Pit

DRIVING DIRECTIONS:

To Harvest Area
 Follow US Route 2 east from Sultan for 1 mile to reach the intersection with Sultan Basin Road. Turn left at the traffic light onto the Sultan Basin Road and follow north for 4.0 miles to reach the CSB-40. Take a right onto the CSB-40 and continue through the gate for 0.7 miles to arrive at the High Caliber Timber Sale.

To Rock Pit
 From the intersection of the Sultan Basin Road and the CSB-40, continue north 1.5 miles to the MC-ML gate. Proceed through the gate for 0.5 miles and take a left at the three-way fork onto the MC-05. Continue on the MC-05 for 0.7 miles and arrive at the MC-12 Rock Pit.





TIMBER NOTICE OF SALE

SALE NAME: RHONE

AGREEMENT NO: 30-101101

AUCTION: February 22, 2022 starting at 10:00 a.m., COUNTY: Thurston South Puget Sound Region Office, Enumclaw, WA

SALE LOCATION: Sale located approximately 8 miles southwest of Littlerock.

PRODUCTS SOLD AND SALE AREA: All timber, except leave trees bounded out by yellow leave tree area tags, trees marked with blue paint, snags, and down timber existing more than 5 years from the day of sale, bounded by the following: white Timber Sale Boundary tags and the E-6000 and E-6200 roads in Unit #1; white Timber Sale Boundary tags, and the E-6000, and E-6050 roads in Unit #2; white Timber Sale Boundary tags in Unit #3;

All timber bounded by orange right of way tags in Unit #4.

All forest products above located on part(s) of Sections 17 and 18 all in Township 16 North, Range 3 West, W.M., containing 118 acres, more or less.

CERTIFICATION: This sale is certified under the Sustainable Forestry Initiative® program Standard (cert no: PwC-SFIFM-513)

ESTIMATED SALE VOLUMES AND QUALITY:

Table with columns: Species, Avg DBH, Ring Count, Total MBF, and MBF by Grade (1P, 2P, 3P, SM, 1S, 2S, 3S, 4S, UT). Rows include Douglas fir, Red alder, Red cedar, Maple, Hemlock, and Sale Total.

MINIMUM BID: \$1,138,000.00 BID METHOD: Sealed Bids

PERFORMANCE SECURITY: \$100,000.00 SALE TYPE: Lump Sum

EXPIRATION DATE: October 31, 2023 ALLOCATION: Export Restricted

BID DEPOSIT: \$113,800.00 or Bid Bond. Said deposit shall constitute an opening bid at the appraised price.

HARVEST METHOD: Harvesting activities are estimated to be 100 percent ground based harvest. Tracked ground based equipment with non-tethered self-leveling shovels limited to sustained slopes 65 percent or less, all other tracked equipment limited to sustained slopes that are 45 percent or less, except tracked skidders allowed for pole removal only. Yarding may be restricted during wet weather if rutting becomes excessive, per clause H-017.

ROADS: 40.50 stations of required construction. 28.75 stations of optional construction. 10.68 stations of required prehaul maintenance. 28.75 stations of abandonment, if constructed. Purchaser maintenance on the E-6200, E-6220, E-6060, E-6050, E-6001, and the E-6000



TIMBER NOTICE OF SALE

from the junctions of E-6200 to the E-6070. Designated maintenance on all other roads used.

Rock for this proposal may be obtained from the State owned Scott Paper Quarry at no cost to the Purchaser or any commercial rock source at the Purchaser's expense.

The operation of road construction equipment is not allowed from November 1 to April 30, nor on weekends or State recognized holidays, unless authority to do so is granted, in writing, by the Contract Administrator. If permission is granted to operate from November 1 to April 30, a maintenance plan is required per Road Plan clause 1-26.

The hauling of forest products will not be permitted from November 1 to April 30 unless authorized in writing by the Contract Administrator. If permission is granted to operate from November 1 to April 30, preventative measures may be required to protect water, soil, roads and other forest assets.

ACREAGE DETERMINATION

CRUISE METHOD: Acreage was determined by traversing boundaries by GPS in all units. GPS data files are available at DNR's website for timber sale auction packets. See cruise narrative for cruise method.

FEES: \$53,176.00 is due on day of sale. \$9.00 per MBF is due upon removal. These are in addition to the bid price.

SPECIAL REMARKS: See map for gate locations. Gate keys may be obtained by contacting the South Puget Sound Region office at (360) 825-1631 or by contacting the Tumwater work center at (360) 280-3113.

Purchaser shall cut all hardwood stems greater than 2 inches dbh within all harvest units, leaving a stump no more than 12 inches in height.

Six trees in the Unit #4 ROW have been marked with double bands of red paint and the letter "D" that need to be cut and placed as downed woody debris in the adjacent wetlands (3 in each) as part of a WMZ mitigation.

No operations are allowed within the non-tradeable leave tree area in Unit #1.

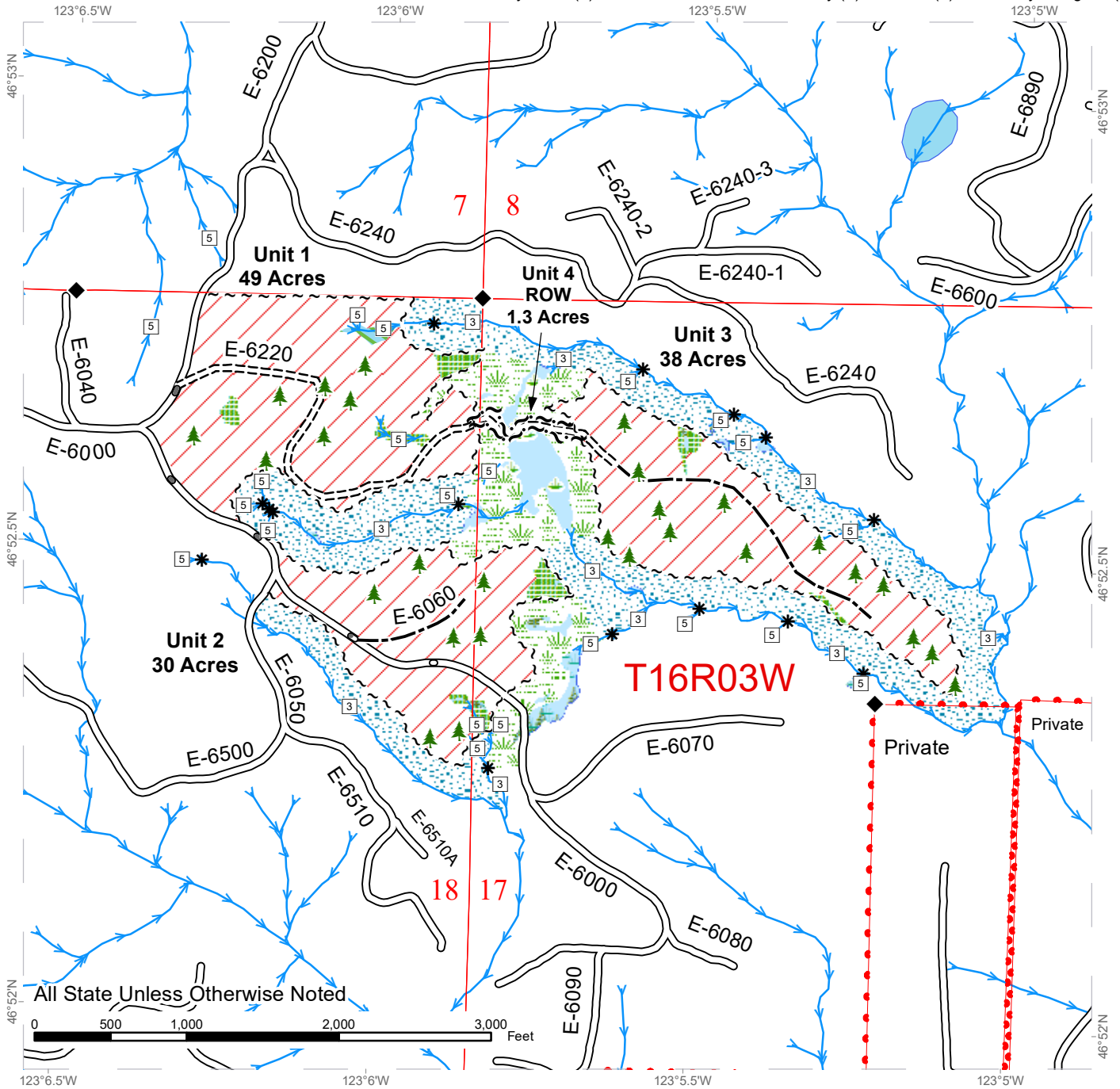
Pit development plan includes mandatory reduction and use of oversized material in areas 'A', 'B', and 'C' before further development shall proceed. Oversize material in pile 'A' will stop once the elevation of the pile is reduced to the level of the E-6800-1 road.

For the safety of the public, please remove from roads and trails all string from string boxes used during appraising or cruising this sale.

TIMBER SALE MAP

SALE NAME: RHONE
AGREEMENT #: 30-101101
TOWNSHIP(S): T16R3W
TRUST(S): Charitable/Educational/Penal & Reformatory Instit. (6), Common School and Indemnity (3), Escheat (9), University - Original (11)

REGION: South Puget Sound Region
COUNTY(S): Thurston
ELEVATION RGE: 200-680

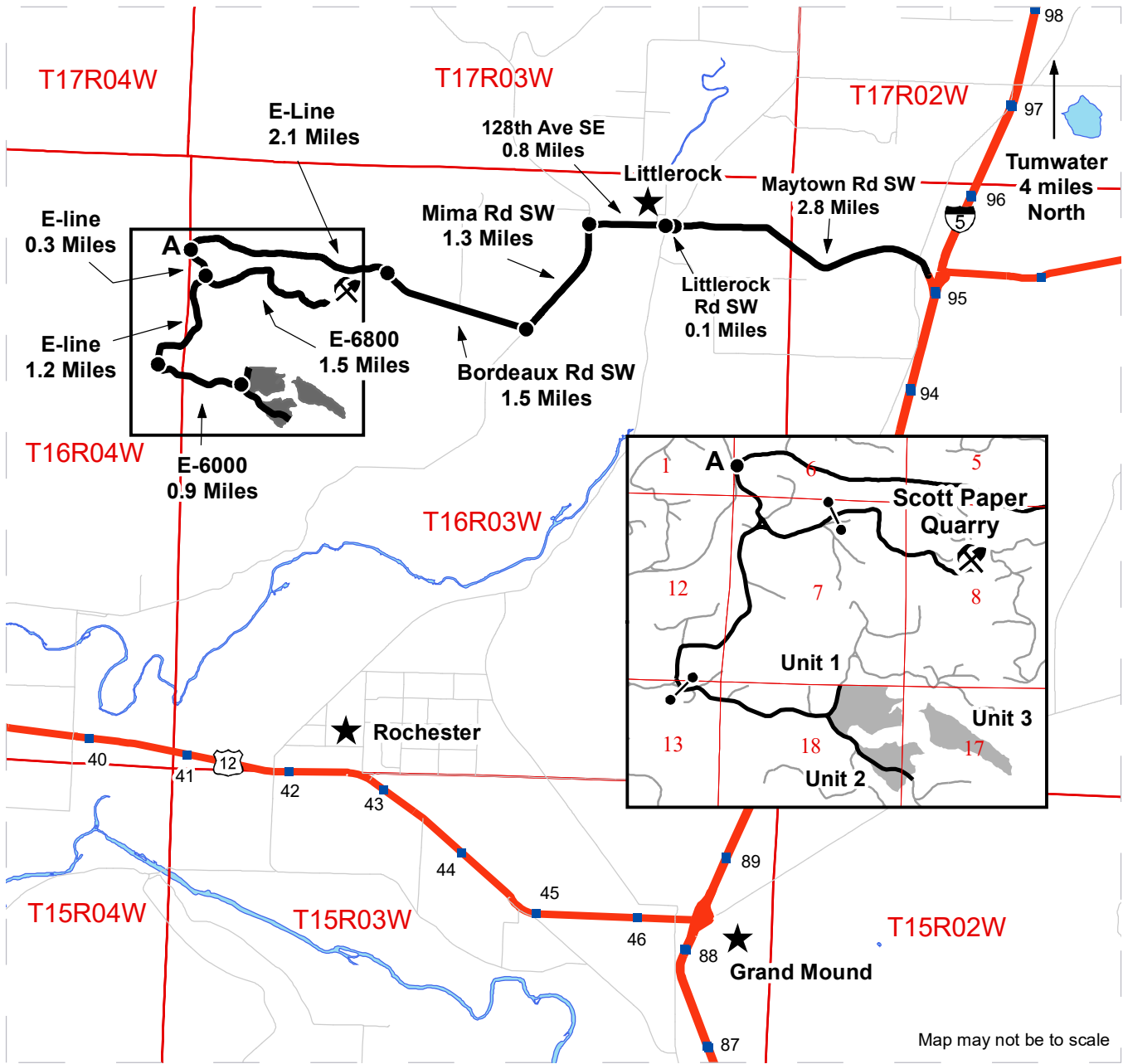


Variable Retention Harvest	Existing Roads	Streams
Non-tradeable Leave Tree Area	Required Pre-Haul Maintenance	Stream Type
Leave Tree Area	Required Construction	Stream Type Break
Wetlands - Non-forested	Optional Construction	Leave Tree Area <1/4-acre
Forested Wetland	Sale Boundary Tags	Survey Monument
Wetland Mgt Zone	Right of Way Tags	
Riparian Mgt Zone	Property Line	

DRIVING MAP

SALE NAME: RHONE
 AGREEMENT#: 30-101101
 TOWNSHIP(S): T16R3W
 TRUST(S): Charitable/Educational/Penal & Reformatory Instit. (6), Common School and Indemnity (3), Escheat (9), University - Original (11)

REGION: South Puget Sound Region
 COUNTY(S): Thurston
 ELEVATION RGE: 200-680



Map may not be to scale

- Timber Sale Unit
- Haul Route
- Highway
- Other Route
- Rock Pit
- Town
- Distance Indicator
- Milepost Marker
- Gate (H957)

DRIVING DIRECTIONS:

From I-5 (exit 95): Turn west onto Maytown Rd SW for 2.8 miles. Continue straight onto Little Rock Rd SW for 0.1 miles. Continue straight onto 128th Ave SE for 0.8 miles. Turn left onto Mima Rd SW for 1.3 miles. Turn right onto Bordeaux Rd SW for 1.5 miles. Bordeaux becomes the E-line for an additional 2.1 miles. Then turn left to stay on E-line (Indicator A end of pavement).

Units: From indicator A stay on E-line for 1.5 miles then turn right onto E-6000 for 0.9 miles. Unit 3 is not directly accessible by road until after new construction. Walk in from E-6240 or E-6000.

Quarry: From indicator A stay on E-line for 0.3 miles then turn left onto E-6800 for 1.5 miles.



**State of Washington
Department of Natural Resources**

SEALED BID FORM

Sale Name _____ Agreement Number _____

_____ hereby submits the following bid for timber.
(Print full, legal company name)

(Street address, City, State, Zip Code)

(Phone Number)

Lump Sum Bid (Not Including Fees) \$ _____ **For Total Sale**

Weight Scale Sale Bid (Not Including Fees) \$ _____ / **Ton**

Scribner Scale Sale Bid (Not Including Fees) \$ _____ / **MBF For Biddable Species**

BID DEPOSIT

Bid Deposit Amount: \$ _____

Bid Deposit Type:

- Cash, certified check, cashiers check, or money order
- Per Sale Bid Bond
- Statewide Bid Bond, Number _____

Within 30 days of confirmation date the successful bidder agrees to furnish Performance Security acceptable to the State in the amount specified on the Notice of Sale. Performance Security must guarantee performance of all provisions of the contract and payment of any damages caused by operations under the contract or resulting from the successful bidders noncompliance with any rule or law.

Bidder's Warranty and Bid Signature

By signing and submitting this bid as an offer to purchase forest products from the State, the Bidder hereby warrants to the State that they have had an opportunity to fully inspect the sale area and the forest products being sold. Bidder further warrants to the State that they enter this bid based upon their own judgments of the value of the forest products, formed after their own examination and inspection of both the timber sale area and the forest products being sold. Bidder also warrants to the State that they enter this bid without any reliance upon the volume estimates, acreage, appraisals, pre-bid documentation, or any other representation by the Washington State Department of Natural Resources.

_____ Date _____
(Signature of Authorized Representative submitting this bid)

(Print name and title of Authorized Representative submitting this bid)

Note: all sales are subject to confirmation by the Commissioner of Public Lands (Refer 79.15.120)

Instructions For Completing Sealed Bid Form

All bids submitted for the purchase of forest products being sold by the Washington State Department of Natural Resources must have an original signature on behalf of the person or entity submitting the bid, and must be on the form provided in this booklet or a photocopy thereof. The DNR will not accept bids that are not signed, and will not accept bids that are not on the current, approved bid form. All appropriate blanks on bid form must be completed including the bid bond number if the bidder is relying upon a bid bond for bid deposit.

For more specific information, contact the appropriate region office.

In-Person Bids

- A. Sealed bids must be in auction box before 10:00 a.m. on the day of auction at the location specified in the Timber Notice of Sale.
 - B. Sealed bids must be submitted in an envelope with the name of the sale, the bidder's name and the contract number clearly written on the outside of the envelope. The full legal name and business address of the bidder must be inserted where indicated on the form, and must be on the bid bond and timber sale contract. The bid form must be signed by an authorized representative. When a bidder has more than one person authorized to bid, documentation of those persons with signature authority for bidding must accompany the bid or be on file at the region office. Sealed bid envelopes are available at all region offices. One bid per envelope.
 - C. Sealed bid envelopes **must** contain a completed bid form and a bid deposit.
 - D. Sealed bid envelopes **may** contain a check for the Initial Deposit amount and a check for fees.
-

Mailed Bids

- A. Bids that are mailed are required to have printed on the outside: "DO NOT OPEN UNTIL SALE DATE. SEALED BID ENCLOSED". The sealed bid envelope(s) will be enclosed inside the mailed-in envelope. Mailed bids must be submitted in an envelope with the name of the sale, the bidder's name and the agreement number clearly written on the outside of the envelope. The full legal name and business address of the bidder must be inserted where indicated on the form, and must be the same on the bid bond and timber sale contract. The Sealed Bid Form must be signed by an authorized representative. When a bidder has more than one person authorized to bid, documentation of those persons with signature authority for bidding must accompany the bid or be on file at the region office. Mail-in envelopes are available at all region offices. One bid per mailed-in envelope.
 - B. Bids that are mailed will be accepted up to 4:30 p.m. the last business day before the auction by the region office in which the sale is located. Bidders assume the risk for the method of delivery. The DNR assumes no responsibility for any delays caused by any delivery service.
 - C. Sealed bid envelopes **must** contain a completed bid form and a bid deposit.
 - D. Sealed bid envelopes **may** contain a check for the Initial Deposit amount and a check for fees.
-

Initial Deposit:

Lump Sum Sales - Initial Deposit must equal 10% of the total bid submitted.
(25% if the bidder is a defaulter as defined under WAC 332-140-300)

Weight Scale Sales - Initial Deposit must equal 10% of the bid per ton multiplied by the total sale estimated tonnage. (25% if the bidder is a defaulter as defined under WAC 332-140-300)

Scribner MBF Scale Sales - Initial Deposit must equal 10% of the bid per MBF multiplied by the total sale MBF. (25% if the bidder is a defaulter as defined under WAC 332-140-300)

**State of Washington
Department of Natural resources**

STATEWIDE BID BOND

Bond Number _____

_____ of _____,
(Principal's Name) (City, State)

hereinafter called PRINCIPAL, and _____ hereinafter called
SURETY,

a corporation organized under the laws of the State of _____, and authorized to transact surety business in the State of Washington, as SURETY, are held and firmly bound jointly and severally to the State of Washington, Department of Natural Resources, hereinafter called the STATE, in the sum of \$150,000.00 Dollars, lawful money of the United States of America. The PRINCIPAL binds itself, its heirs, executors, administrators, successors, and assigns, and the SURETY binds itself, its successors, and assigns, all jointly and severally.

This bond shall be governed by the laws of the State of Washington. In the event of a lawsuit involving this bond, a venue shall be proper only in Thurston County Superior Court.

Signed, sealed and dated this _____ day of _____, _____ .
(month) (year)

This statewide bid bond may be used for bidding between the following dates:

Starting:

Ending:

It Is Hereby Understood and Agreed:

If PRINCIPAL is an apparent high bidder, PRINCIPAL shall before 4:30 p.m ., on day of sale, pay to the STATE the amount of the initial deposit in the form of a certified check, cashier's check, bank draft, cash or money order, then this agreement shall be void for the sale on which the payment is made; otherwise, it will remain in force.

SURETY will make payment to the STATE within ten days after demand by the STATE if the PRINCIPAL shall fail to make timely payment as described above.

The SURETY may cancel this bond by sending a written notice to the STATE, not less than forty-five days before a cancellation date; liability shall terminate as to acts or omissions of the PRINCIPAL that occur after the cancellation date.

The PRINCIPAL and the SURETY executed this bond on the date first mentioned.

Principal: (Above named)

Signature: _____

Name: _____

Title: _____

Address: _____

City: _____
State & Zip Code

Surety: (Above named)

Signature: _____

Name: _____

Title: _____

Address: _____

City: _____
State & Zip Code

Surety: (Local Office of Authorized agent)

Signature: _____

Name: _____

Title: _____

Address: _____

City: _____
State & Zip Code

Notary or Company Seal in Space Above

Instructions for Completing Timber Sale Statewide Bid Bond

- A. This form is authorized for use as bid guaranty to qualify for bidding on Washington State Department of Natural Resources timber sales.
- B. The Statewide Bid Bond may be used as bid guaranty on more than one timber sale.
- C. The full legal name and business address of the PRINCIPAL must be inserted where indicated and must be the same as will appear on the bidding record and timber sale contract. The bond must be signed by an authorized person. Additionally, the name must be typed or printed below the signature and title must be shown.
- D. The full legal name and business address of the SURETY must be inserted where indicated. The bond must be signed by an authorized person. Additionally, the name must be typed or printed below the signature and the title must be shown.
- E. If the SURETY does not have a Washington State office or resident agent, but is authorized to transact surety business in the State of Washington as SURETY, it may leave this signature block blank.
- F. This form must be received by the Department of Natural Resources, Product Sales & Leasing Division, PO BOX 47016, Olympia, Washington, 98504-7016, ten days in advance of the auction.
- G. **The State reserves the right to reject *incomplete or incorrect* bid bond forms, making such forms unacceptable as bid guaranty.**

**State of Washington
Department of Natural Resources**

Timber Sale Per Sale Bid Bond

Bond Number _____

_____ of _____, hereinafter called PRINCIPAL, and _____, hereinafter called SURETY, a corporation organized under the laws of the State of _____ and authorized to transact surety business in the State of Washington, as SURETY, are held and firmly bound jointly and severally to the State of Washington, Department of Natural Resources, hereinafter called the STATE, in the sum of \$ _____ Dollars, lawful money of the United States of America. The PRINCIPAL binds itself, its heirs, executors, administrators, successors, and assigns, and the SURETY binds itself, its successors, and assigns, all jointly and severally.

This bond shall be governed by the laws of the State of Washington. In the event of a lawsuit involving this bond, venue shall be proper only in Thurston County Superior Court.

Signed, sealed, and dated this _____ day of _____, 20 _____.

BID IDENTIFICATION:

SALES NAME(S)	REQUIRED DEPOSIT	AGREEMENT NUMBER(S)

DATE OF BID: _____

It Is Hereby Understood and Agreed:

If PRINCIPAL is the high bidder on the sale(s) identified above and, within ten (10) days of the day of sale, transmits cash, certified check, cashier's check, bank draft or money order, payable to the STATE, in the amount of the bid guaranty required by the terms of the Notice of Sale, *then* this obligation shall be void; *otherwise*, it shall remain in force.

SURETY will make payment to the STATE within ten (10) days after demand by the STATE whenever the PRINCIPAL shall fail to make timely payment as described above.

IN WITNESS WHEREOF: the PRINCIPAL and the SURETY have caused this bond to be executed on the date first mentioned.

SECOND OFFICER:

Signature: _____

Name: _____

Title: _____

PRINCIPAL: (Above Named)

Signature: _____

Name: _____

Title: _____

SURETY: (Local Office of Authorized Agent)

Signature: _____

Name: _____

Title: _____

Address: _____

City: _____

State & Zip: _____

SURETY: (Above Named)

Signature: _____

Name: _____

Title: _____

Address: _____

City: _____

State & Zip _____

NOTARY OR COMPANY SEAL IN THE SPACE ABOVE

Instructions for Completing Timber Sale Per Sale(s) Bid Bond

- A. This form is authorized for use as bid guaranty to qualify for bidding on Washington State Department of Natural Resources timber sales.
- B. The Timber Sale Per Sale Bid Bond may be used as bid guaranty on more than one timber sale auction held the same date at the same location.
- C. The full legal name and business address of the PRINCIPAL must be the same as will appear on the bidding record and timber sale contract. The bond must be signed by an authorized person, the name typed or printed, and title shown. If PRINCIPAL is a corporation, a second officer must sign in the space to the left of the signature of the officer executing for the PRINCIPAL.
- D. The full legal name and business address of the SURETY must be inserted where indicated. The bond must be signed by an authorized person. Additionally, the name must be typed or printed below the signature and the title must be shown. If this person is not an officer of the corporation, evidence of authority must be submitted.
- E. If the SURETY does not have a Washington State office or resident agent, but is authorized to transact surety business in the State of Washington as Surety, it may leave the local office signature block blank.
- F. The date of the bid bond must not be later than the auction date.
- G. **The State reserves the right to reject incomplete or *incorrect* bid bond forms, making such forms unacceptable as guaranty.**

STATE OF WASHINGTON
DEPARTMENT OF NATURAL RESOURCES
LOG SORT SEALED BID FORM

Sale Name _____ Agreement Number _____ Date _____

_____ hereby submits the following bid for delivered logs.
(Print Company Name)

_____ Telephone Number _____
(Print Name Authorized Company Representative) (Contact for bid result notification)

(Street Address)

(City, State and Zip)

Agreement Number	Sort Number	<u>Delivered</u> Logs Bid Amount (fill in one only)	
		\$ /MBF	\$ /TON

Bid Deposit Amount \$ _____

- Bid Deposit Type:**
- Cash, Certified Check, Cashiers Check, or Money Order
 - Per Sale Bid Bond
 - Statewide Bid Bond, Number _____

The successful bidder agrees to furnish payment security acceptable to the State in the amount as described in clause P-041 of the Purchaser’s contract prior to log delivery and at a date to be determined by the State.

Bidder’s Warranty and Bid Signature

By signing and submitting this bid as offer to purchase forest products from the State, the Bidder hereby warrants to the State that they have had an opportunity to fully inspect the sale area and the forest products being sold. Bidder further warrants to the State that they enter this bid based solely upon their own judgment of the value of the forest products, formed after their own examination and inspection of both the timber sale area and the forest products being sold. Bidder also warrants to the State that they enter this bid without any reliance upon the volume estimates, acreage estimates, appraisals, pre-bid documentation, or any other representation by the State Department of Natural Resources.

(Signature of Authorized Representative submitting this bid)

(Date of Signature)

(Print name and title of Authorized Representative submitting this bid)

NOTES: A separate bid form is required for each log sort bid and must be delivered in a separate envelope. Photocopies of this bid form may be used. Each photocopy must have original signatures. Final contract award is contingent upon the State’s haul cost analysis. Actual haul route may vary and is subject to change at the State’s discretion. All sales are subject to confirmation by the Commissioner of Public Lands as per RCW 79.15.100.

LOG SORT SEALED BID SUPPLEMENTAL INFORMATION FORM_____
(Print Company Name)_____
(Sale Name)_____
(Agreement Number)_____
(Sort Number)_____
(email: optional for DNR production report distribution)**Log Manufacturing Specifications:****Sawlog and Peeler sorts:** Enter at least one preferred log length including trim for each log length range below.**Pole sorts (Distribution):** Enter three or more lengths. Attach preferred manufacturing information.**Pole sorts (Transmission):** Enter six or more lengths. Attach preferred manufacturing information.**Tonnage sorts:** See bid form instructions for required log lengths. Enter additional custom lengths as desired.

Log Length Ranges	Bidder's Preferred Log Lengths
16 ft. through 20 ft.	
22 ft. through 30 ft.	
32 ft. through 40 ft.	
Distribution Poles – 35 ft. through 55 ft.	
Transmission Poles – 60 ft.+	

Log Delivery Information:**1) Designate the point of delivery and address (must be a street address)**_____
(Location Name)_____
(Street Address)_____
(City, State and Zip)**2) Designate the state approved Scaling and Weighing facilities closest to the point of delivery as needed.****Scaling Location Information****Weighing Location Information**_____
(Scaling Location Name)_____
(Weighing Location Name)_____
(Third Party Scaling Organization)_____
(Weighing Location Owner)_____
(Scaling Location Street Address)_____
(Weighing Location Street Address)_____
(Scaling Location City, State and Zip)_____
(Weighing Location City, State and Zip)

Final contract award is contingent upon the State's haul cost analysis. Actual haul route may vary and is subject to change at the State's discretion. Additional terms or conditions requested by the bidder on or attached to the Log Sort Sealed Bid or Supplemental Information Forms are informational only and non-binding.

Instructions for Completing the Log Sort Sealed Bid and Supplemental Information Forms.

All bids submitted for the purchase of forest products being sold by the Washington State Department of Natural Resources must have an original signature on behalf of the person or entity submitting the bid, and must be on the form(s) provided in this booklet or a photocopy thereof. The DNR will not accept bids that are not signed, and will not accept bids that are not on the current, approved bid form. All appropriate blanks including Agreement Number, Sort Number, Bid amount (per mbf or ton as appropriate for the sort), Bid deposit amount and type. Signatures and date on bid form must be completed including the bid bond number if bidder is relying upon a bid bond for bid deposit.

Bids shall not be accepted if a completed '**Log Sort Sealed Bid Supplemental Information Form**' is not included with the approved '**Log Sort Sealed Bid Form**'.

Required log lengths for tonnage sorts: Preferred log lengths for tonnage sawlog sorts shall include the following plus any additional lengths identified on the Bid Supplemental Information form:

Species Type	Preferred Lengths
Conifer Sorts	16', 20', 24', 26', 32', 40'
Hardwood Sorts	18', 20', 26', 28', 30', 36', 38', 40'

For more specific information, contact the appropriate region office.

In-Person Bids

- A. Sealed bids must be in auction box or auction envelope before 10:00 a.m. on the day of sale at the location specified in the notice of sale.
- B. Sealed bids must be submitted in an envelope with the name of the sale, the bidder's name and the contract agreement number clearly written on the outside of the envelope. The full legal name and business address of the bidder must be inserted where indicated on the form, and must be the same as the name on the bid bond and timber sale contract. The bid form must be signed by an authorized person. When a bidder has more than one person authorized to bid, then documentation of those persons with signature authority for bidding must accompany the bid or be on file at the region office. Sealed bid envelopes are available at all region offices. One bid per envelope.
- C. Sealed bid envelopes must contain the following:
 1. A completed '**Log Sort Sealed Bid Form**';
 2. A completed '**Supplemental Information Form**' and;
 3. A bid deposit

Mailed Bids

- A. Mail-in bid envelopes are required to have printed on the outside: "DO NOT OPEN UNTIL SALE DATE. SEALED BID ENCLOSED." The sealed bid envelope(s) will be enclosed inside the mailed-in envelope. Mailed bids must be submitted in an envelope with the name of the sale, the bidder's name and the agreement number clearly written on the outside of the envelope. The full legal name and business address of the bidder must be inserted where indicated on the form, and must be the same on the bid bond and timber sale contract. The bid form must be signed by an authorized person. When a bidder has more than one person authorized to bid, then documentation of those persons with signature authority for bidding must accompany the bid or be on file at the region office. Mail-in envelopes are available at all region offices. One bid per mailed-in envelope.
- B. Mail-in or otherwise delivered bids will be accepted up to 4:30 p.m. the last business day before the auction by the region office in which the sale is located. Bidders assume the risk for the method of delivery they chose. The DNR assumes no responsibility for any delays caused by any delivery service.
- C. Sealed bid envelopes must contain the following:
 1. A completed '**Log Sort Sealed Bid Form**';
 2. A completed '**Log Sort Sealed Bid Supplemental Information Form**' and;
 3. A bid deposit

Department of Natural Resources Region Offices

Olympia Headquarters
 1111 Washington St SE
 MS 47000
 Olympia, WA 98504-7000
 (360) 902-1000
www.dnr.wa.gov

Product Sales & Leasing Division

1111 Washington St SE
 MS 47014
 Olympia, WA 98504-7014
 (360) 902-1600

South Puget Sound Region
 950 Fairman Ave N
 Enumclaw, WA 98022-9282
 (360) 825-1631

Pacific Cascade Region

601 Bond Road
 PO Box 280
 Castle Rock, WA 98611-0280
 (360) 577-2025

Southeast Region

713 Bowers Road
 Ellensburg, WA 98926-9301
 (509) 925-8510

Northwest Region

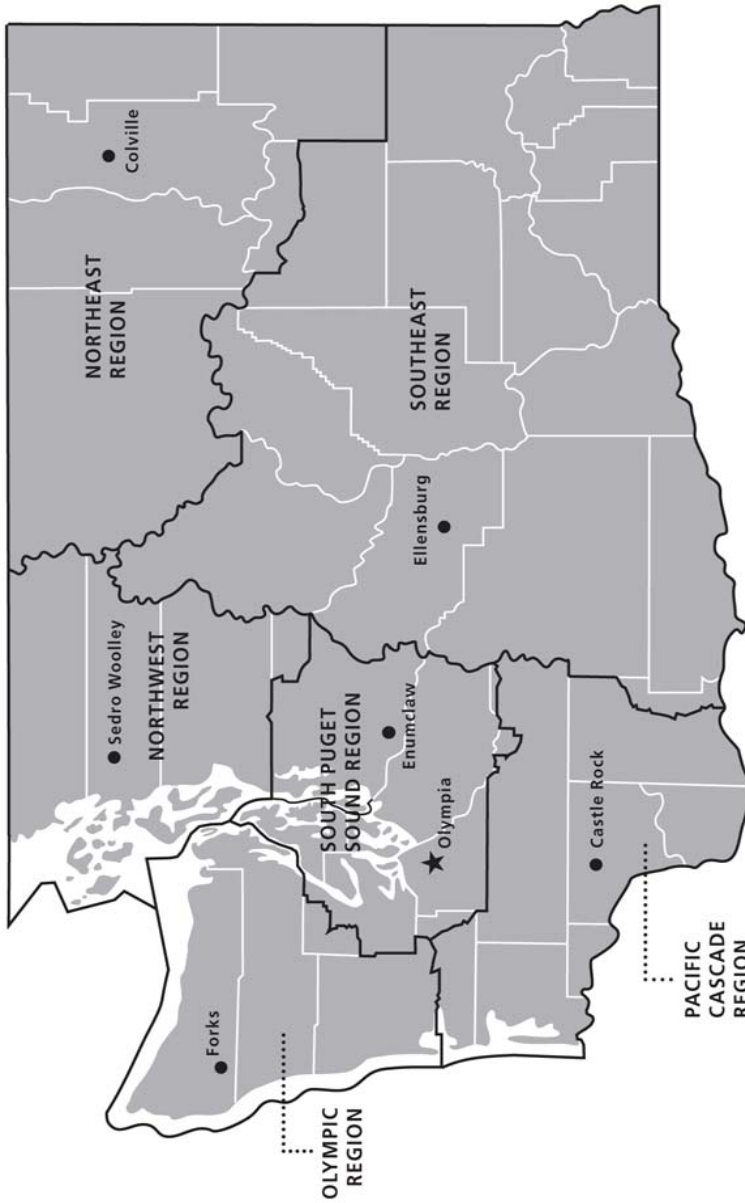
919 N Township St
 Sedro Woolley,
 WA 98284-9384
 (360) 856-3500

Olympic Region





411 Tillicum Lane
 Forks, WA 98331-9271
 (360) 374-2800

Northeast Region

225 S Silke Road
 PO Box 190
 Colville, WA 99114-0190
 (509) 684-7474



DNR REGIONS

-  DNR Region Boundaries
-  County Boundaries
-  DNR Region Office
-  Olympia Headquarters



WASHINGTON STATE DEPT OF
**NATURAL
 RESOURCES**



For more information about how public lands are managed visit DNR's web page at www.dnr.wa.gov

Fire, Burn Ban Information and Region Offices
 Toll Free: 1-800-527-3305 General TTY: 7-1-1





WASHINGTON STATE DEPT OF
**NATURAL
RESOURCES**

1111 WASHINGTON ST SE
MS 47014
OLYMPIA WA 98504-7014

www.dnr.wa.gov

For alternate formats
of this document,
Call (360) 902-1000
TRS: 7-1-1

PRINTED IN THE USA ON RECYCLED PAPER

