

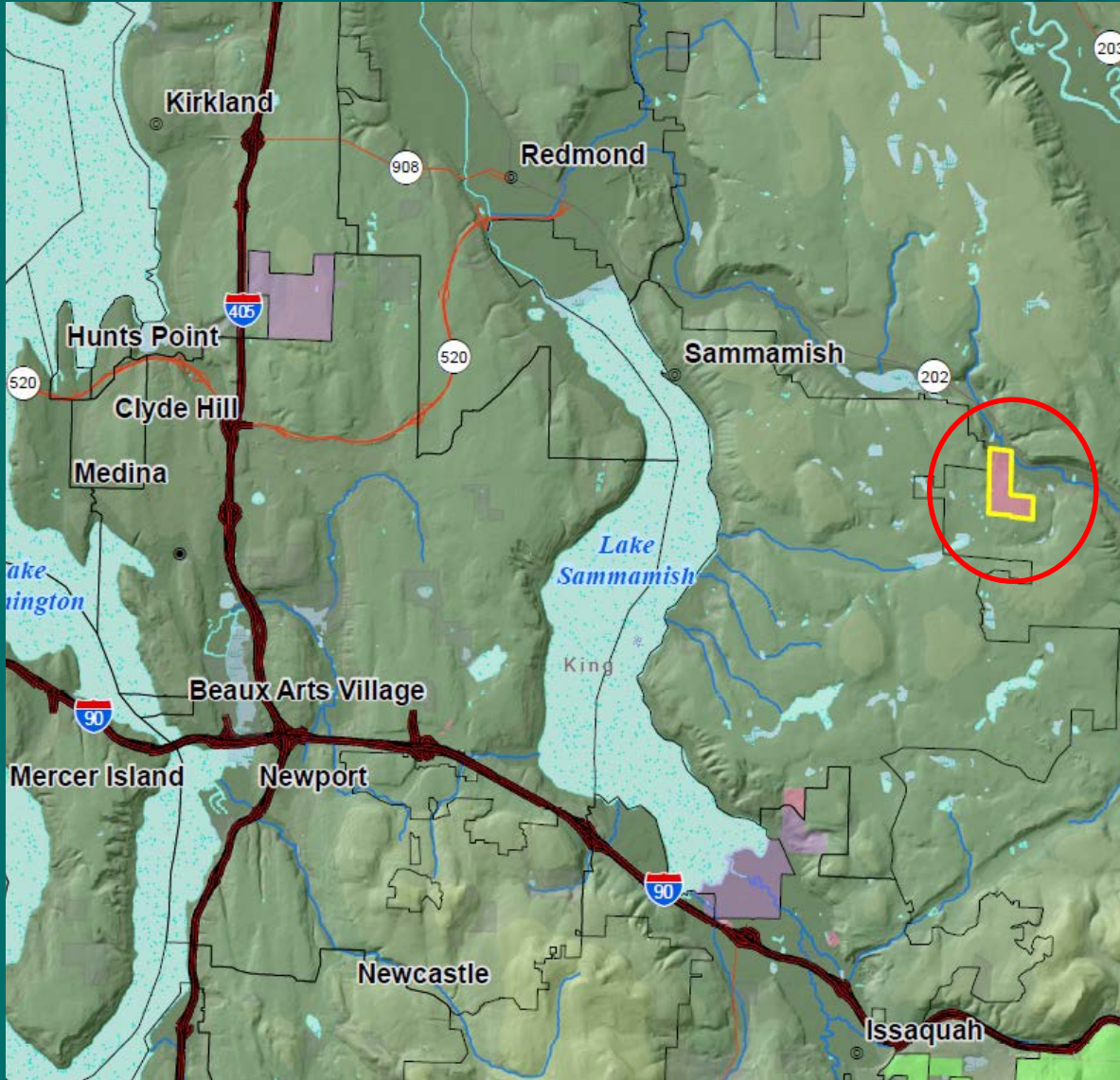
Patterson Creek

02-088891

Proposed Direct Transfer King County



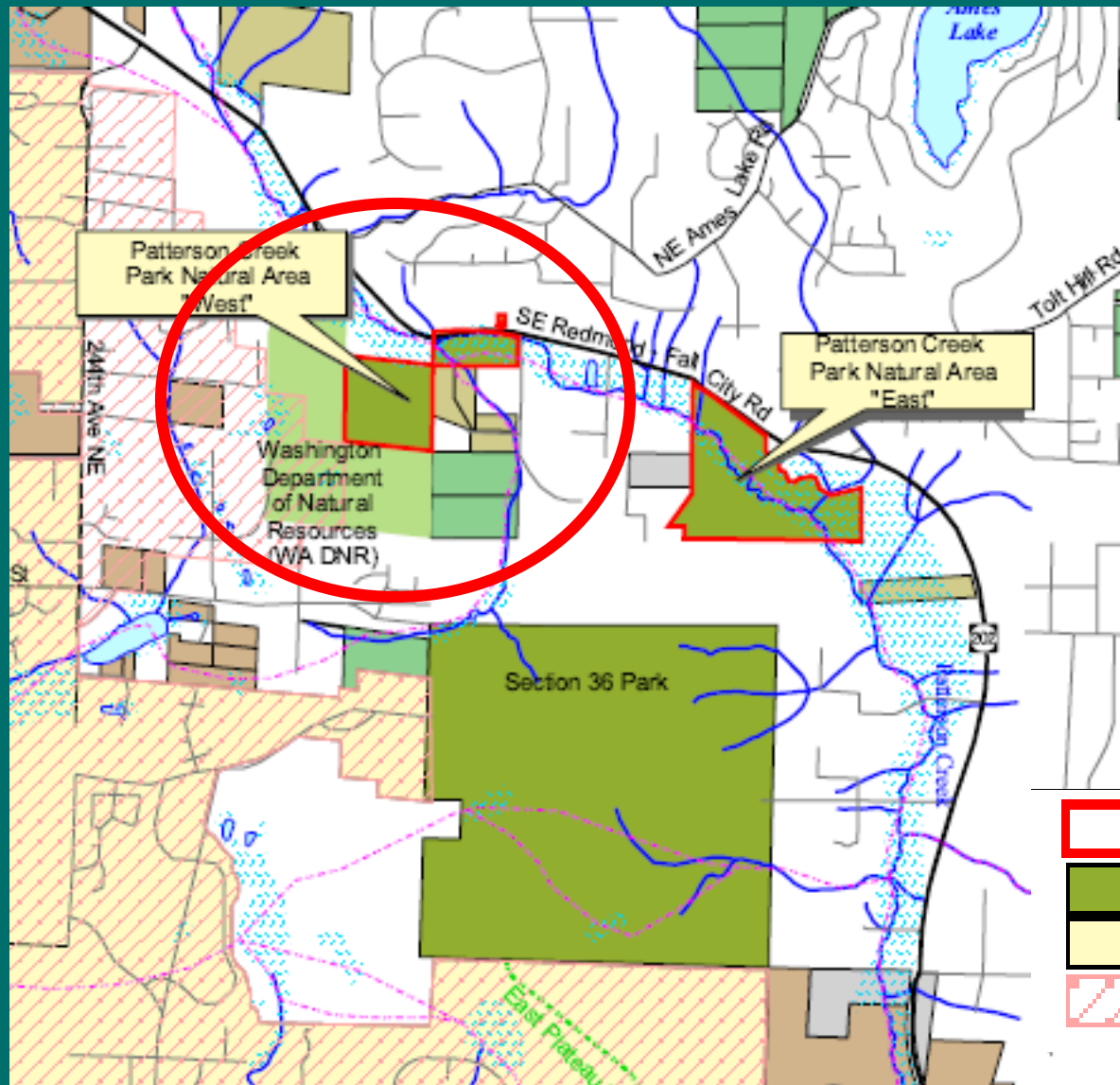
Patterson Creek



- ▶ 160 acres Common School trust
- ▶ North of Issaquah
- ▶ East of the City of Sammamish

Patterson Creek

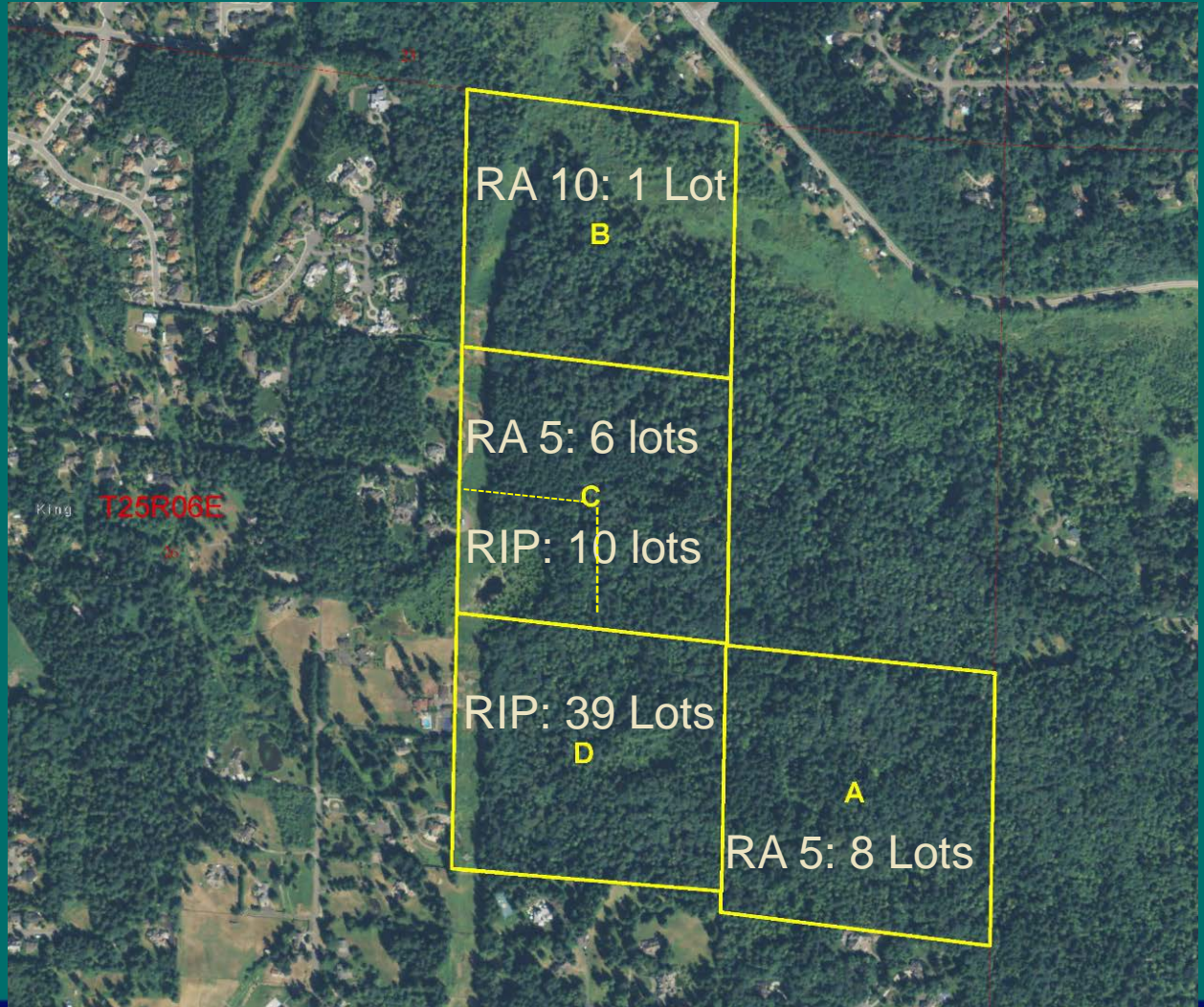
Inclusion into
King County's
Patterson
Creek Park
Natural Area



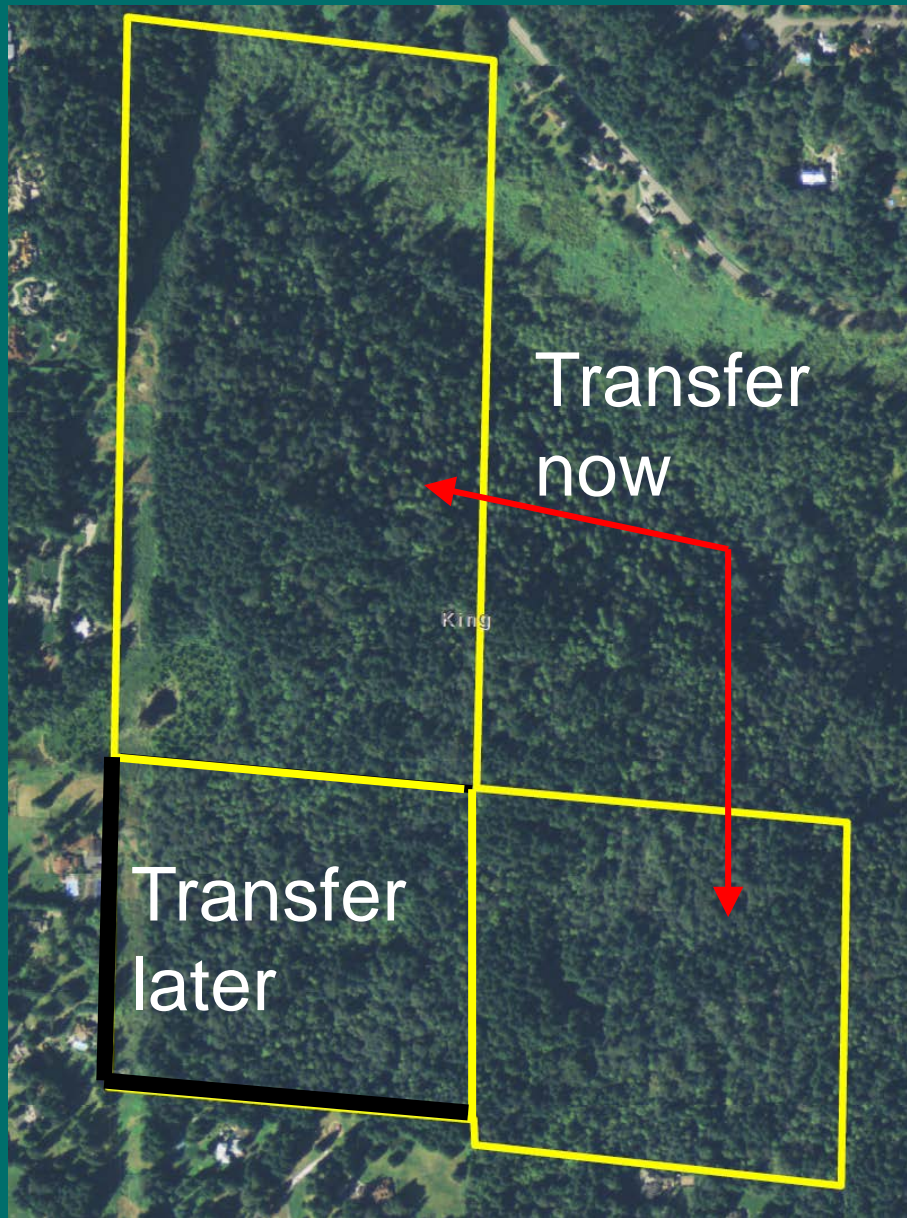
-  Natural Area
-  King County Parks
-  Incorporated Areas
-  Urban Growth Area

Patterson Creek

- Transfer A, B, C (122.56 acres)
- Transfer D 1-2 years (40 acres)



Patterson Creek



- ▶ Appraised Value: 122.56 acres for \$3,025,000
- ▶ Residential access assumed

Patterson Creek

Resolution 1448



Looking east from central portion of Parcel A