

Teanaway Community Forest Recreation Planning



Agenda

•Learn about:

- Teanaway Community Forest

•Understand:

- Recreation planning process

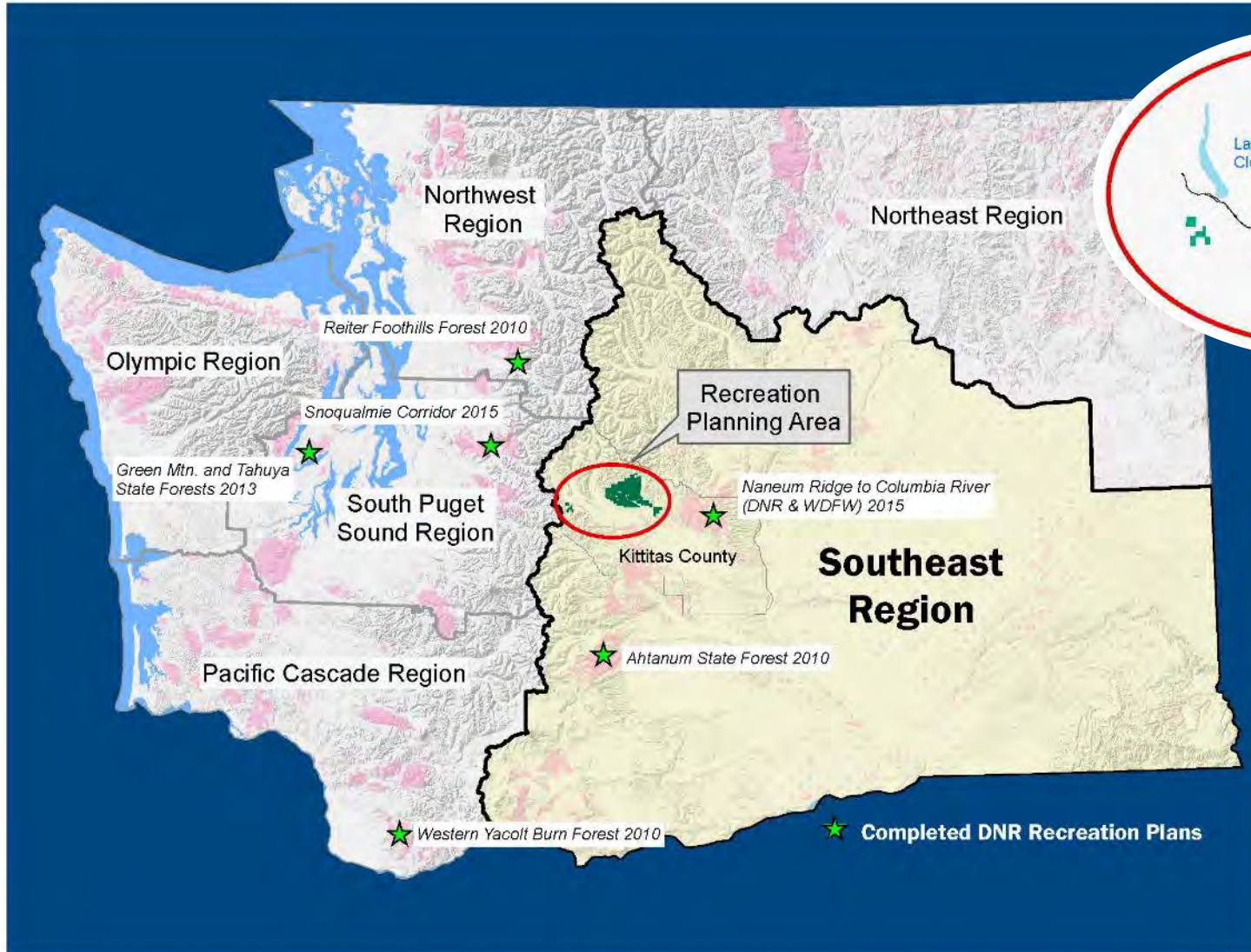
•Provide input:

• Listening Stations

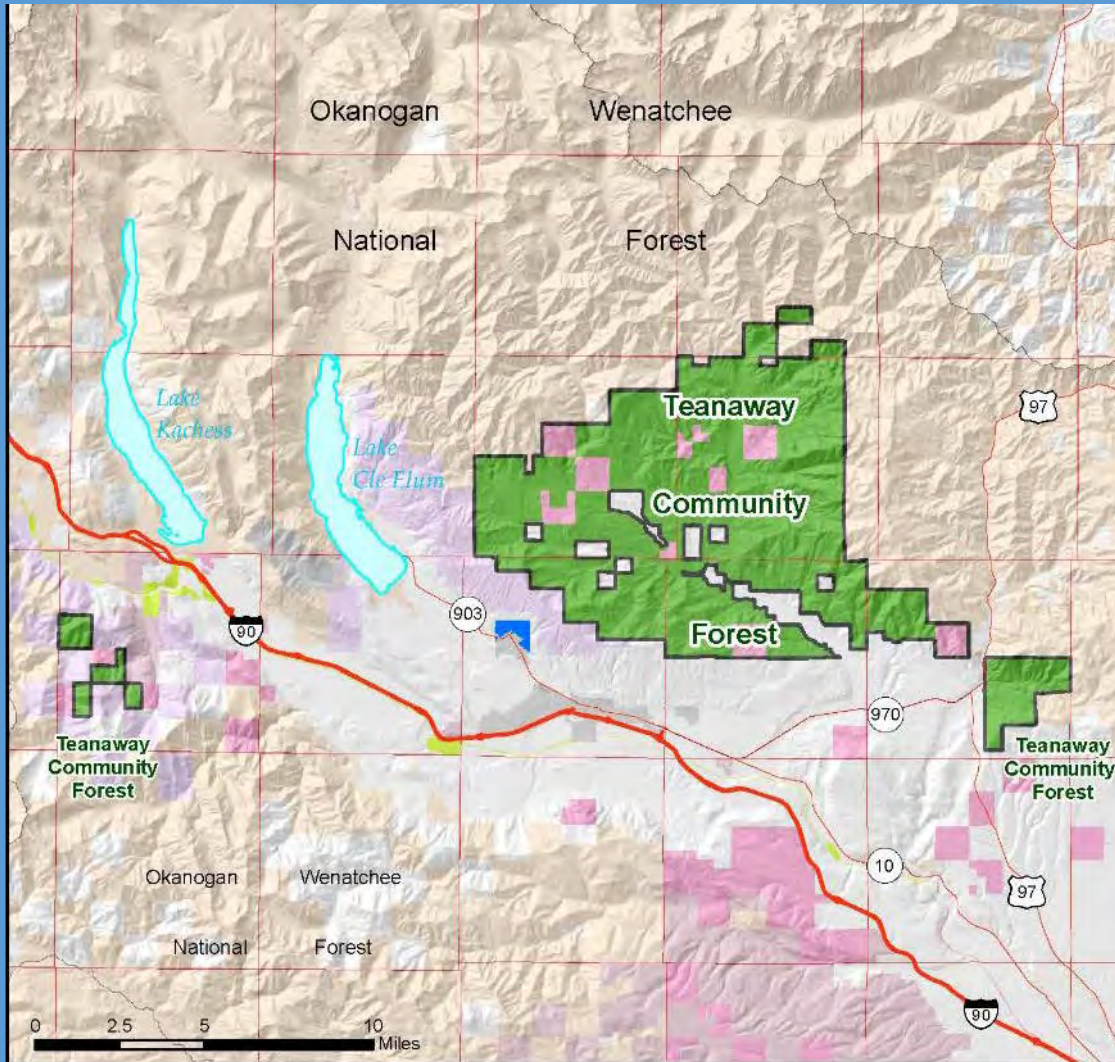
- Recreation suitability
- Recreation concepts
 - Winter
 - Summer
- Project implementation
- Environmental education
- Commercial recreation
 - Guides and events
- Camping



Teanaway Community Forest



Planning Area Map



- | | | |
|---------------------------|---------------------|-----------------------------|
| Teanaway Community Forest | WDFW Land | The Nature Conservancy Land |
| Other DNR-Managed Land | WA State Parks Land | Roslyn Urban Forest |
| Federal Land | | |



Teanaway Community Forest

... a collaborative partnership



Teanaway Community Forest

- Legislative purchase
 - October 2013
- Yakima Basin Integrated Plan
- DNR owns the land
- WDFW holds a conservation easement



DNR and WDFW are committed to a joint decision-making process

Teanaway Community Forest Legislative Direction

In approving the Teanaway purchase, lawmakers directed DNR and WDFW to:

- Protect and enhance the **water supply** and protect the **watershed**
- Maintain **working lands** for forestry and livestock grazing while protecting watershed functions and habitat
- Provide **recreational opportunities** consistent with watershed protection
- Conserve and restore **fish and wildlife habitat**
- Support a strong **community partnership** in ongoing land management



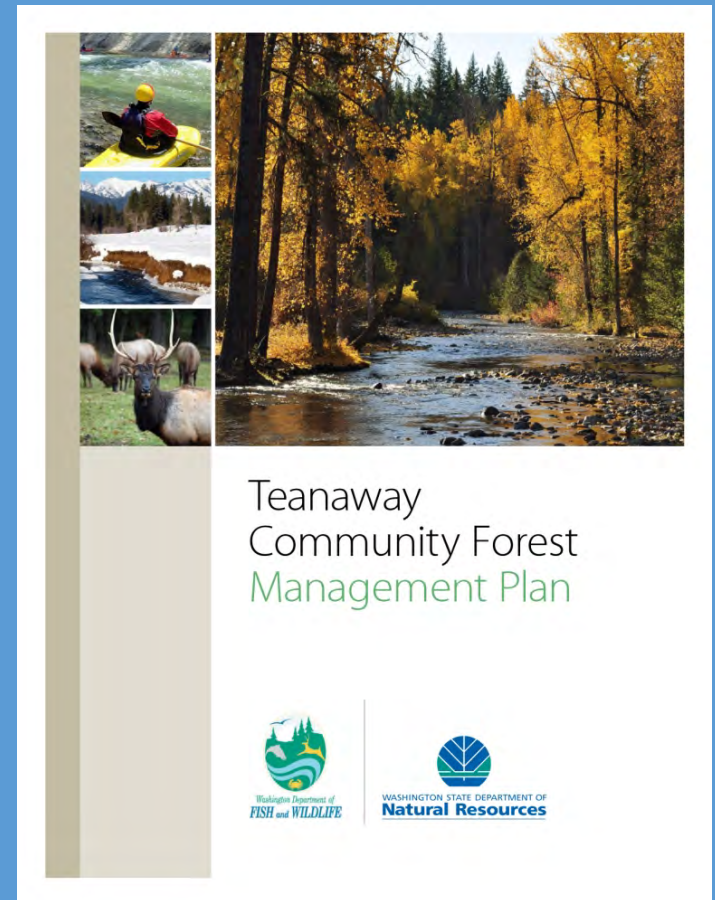
Teanaway Community Forest Advisory Committee

- Back Country Horsemen of WA
- Local Community Members
- Evergreen Mountain Bike Alliance
- Friends of the Teanaway
- Kittitas County Commissioners
- Kittitas County Field & Stream Club
- Mountain to Sound Greenway Trust
- Neighboring landowners
- Off-road vehicle interests
- The Nature Conservancy
- The Wilderness Society
- Washington Department of Ecology
- Washington Trails Association
- WA State Snowmobile Association
- Yakama Nation
- Yakima Basin Integrated Plan Partner



Teanaway Community Forest Management Plan

- Completed May 2015
- Direction for 5 Goals
- 15 public Advisory Committee meetings
- 3 open houses
- More than 1,600 online comments
- Public SEPA review



Management Plan

Recreation Objectives



- Develop a recreation plan for the forest
- Evaluate motorcycle use within the recreation planning process
- Provide a sustainable network of safe, enjoyable recreational trails
- Provide recreation opportunities and facilities that are consistent with watershed protection
- Maintain existing partnerships and establish new collaborations between public agencies, user groups, and citizen volunteers
- Establish a consistent enforcement and education presence

Purpose of Recreation Planning

- Develop objectives for managing recreation for next 10-15 years
- Determine what types of recreation will be provided in the Community Forest and where
- Identify opportunities for connections across the landscape
- Identify partnerships and volunteer opportunities
- Establish priorities for implementing the plan



Recreation Planning Goals

Teanaway Specific:

- To maintain and where possible expand recreational opportunities consistent with watershed protection, for activities such as hiking, fishing, hunting, horseback riding, camping, birding, and snowmobiling.

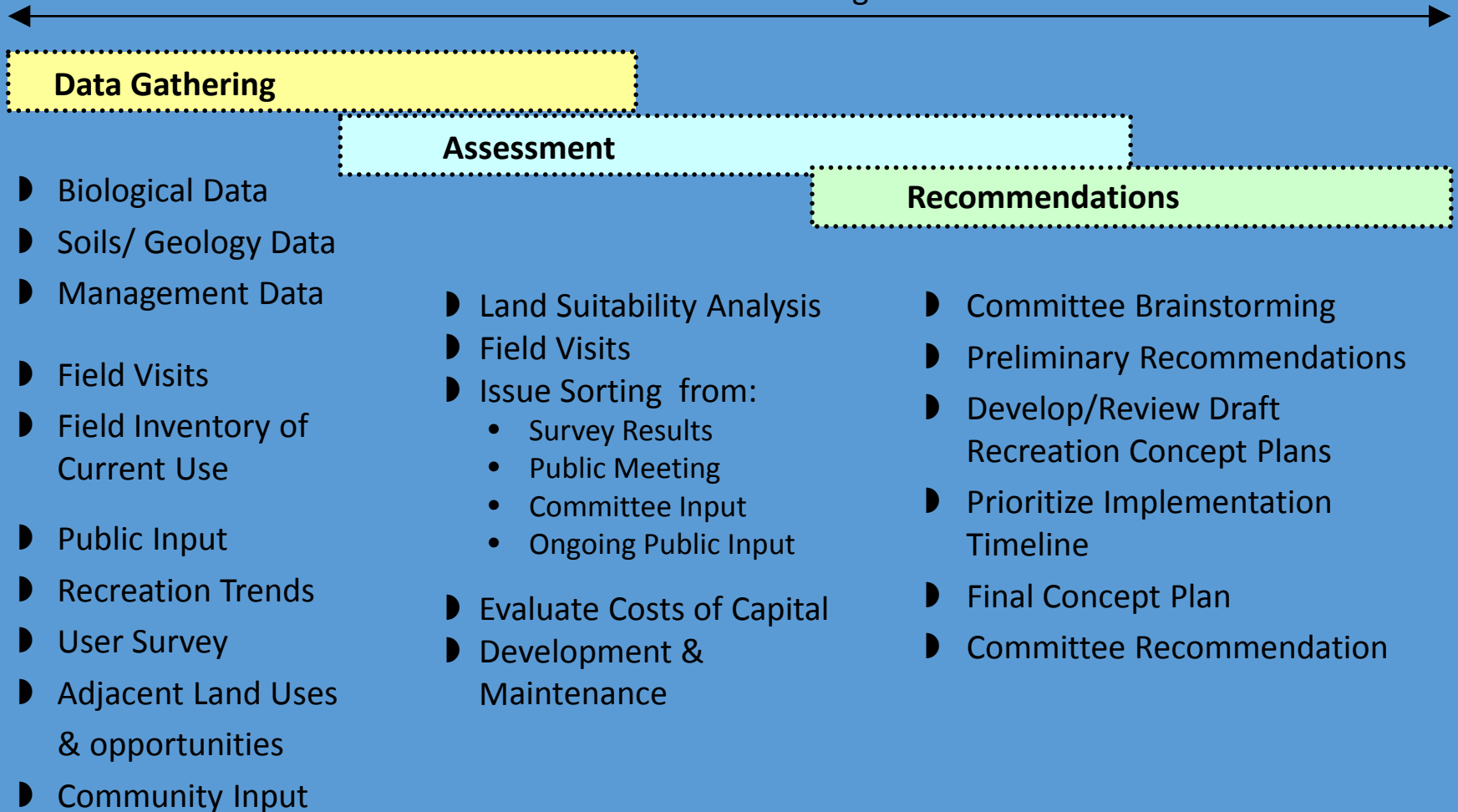
General:

- Resource protection
- High-quality recreation experience
- Public safety



Recreation Planning Committee

Estimated 12 meeting timeframe



Planning Process

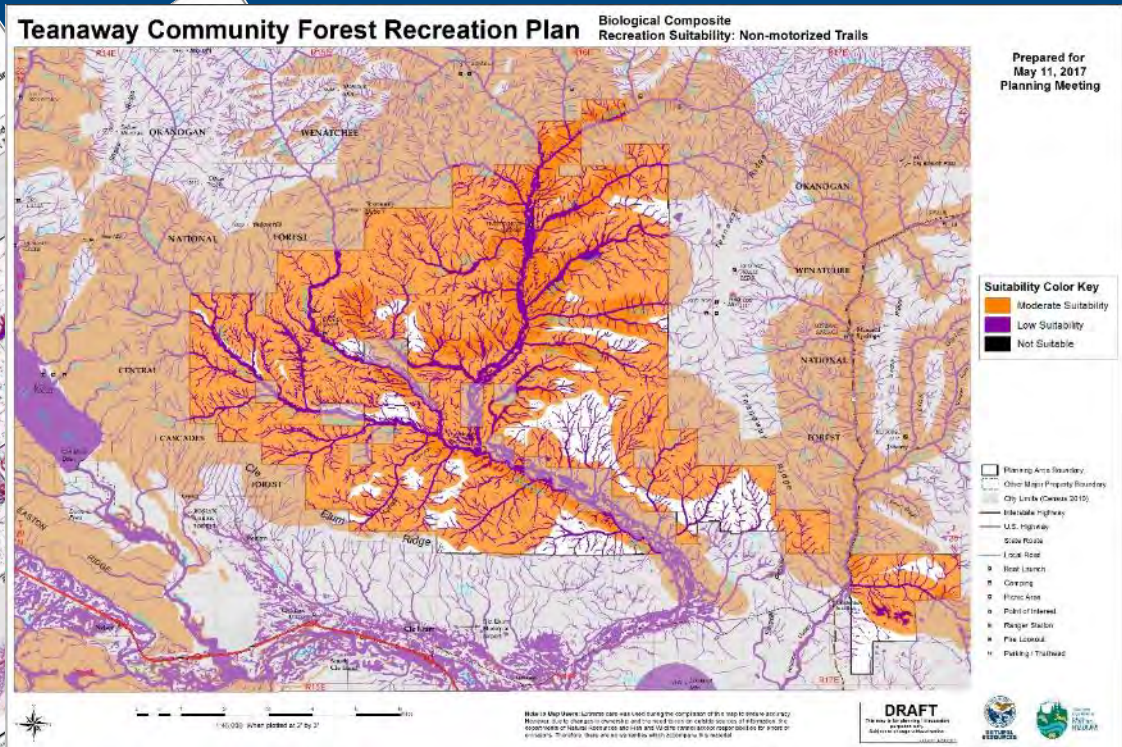
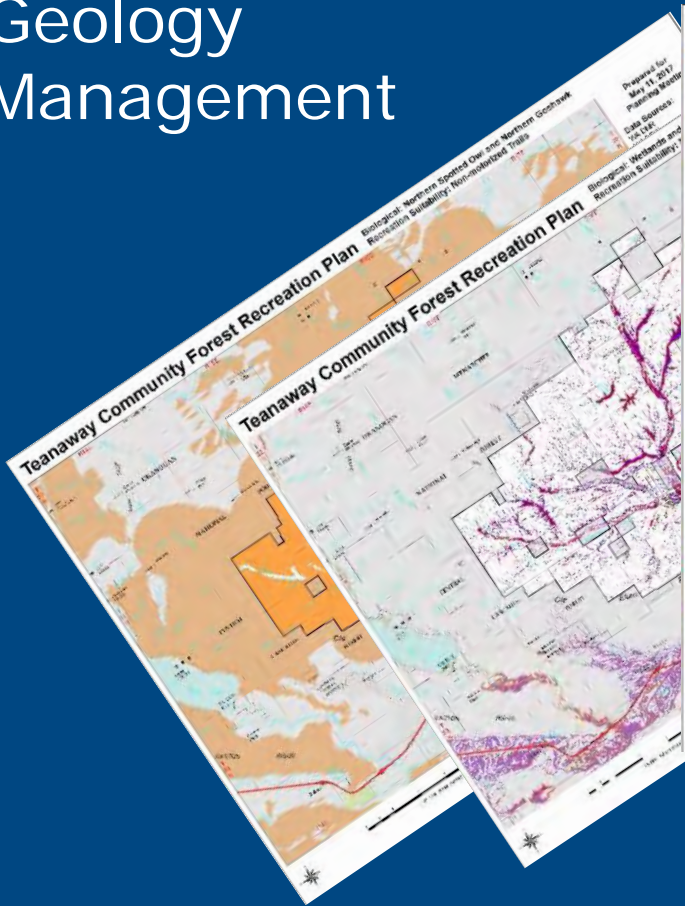
- Seven Phases
- TCF Advisory Committee
- Recreation Land Suitability
- Typical process
 - 12 meetings

Phase 1	PRE-PLANNING Determine the need and scope, project team, stakeholder involvement plan, and data collection needs
Phase 2	INVENTORY/ LAND SUITABILITY Determine the land suitability and planning context for the project
Phase 3	RECREATION INVENTORY/ PUBLIC INVOLVEMENT Determine public issues and concerns, hold public meetings, collect recreation field data, user surveys
Phase 4	ASSESSMENT Determine the 'BIG IDEA', or management concept for the planning area (what are we going to do where?)
Phase 5	ALTERNATIVE(S) Determine and describe the preferred alternative for the project (how and to what degree we provide recreation?)
Phase 6	SEPA & COMMUNICATIONS SEPA is conducted, plan is edited and formatted for publication
Phase 7	ADOPTION Plan is adopted by the agency

Recreation Land Suitability

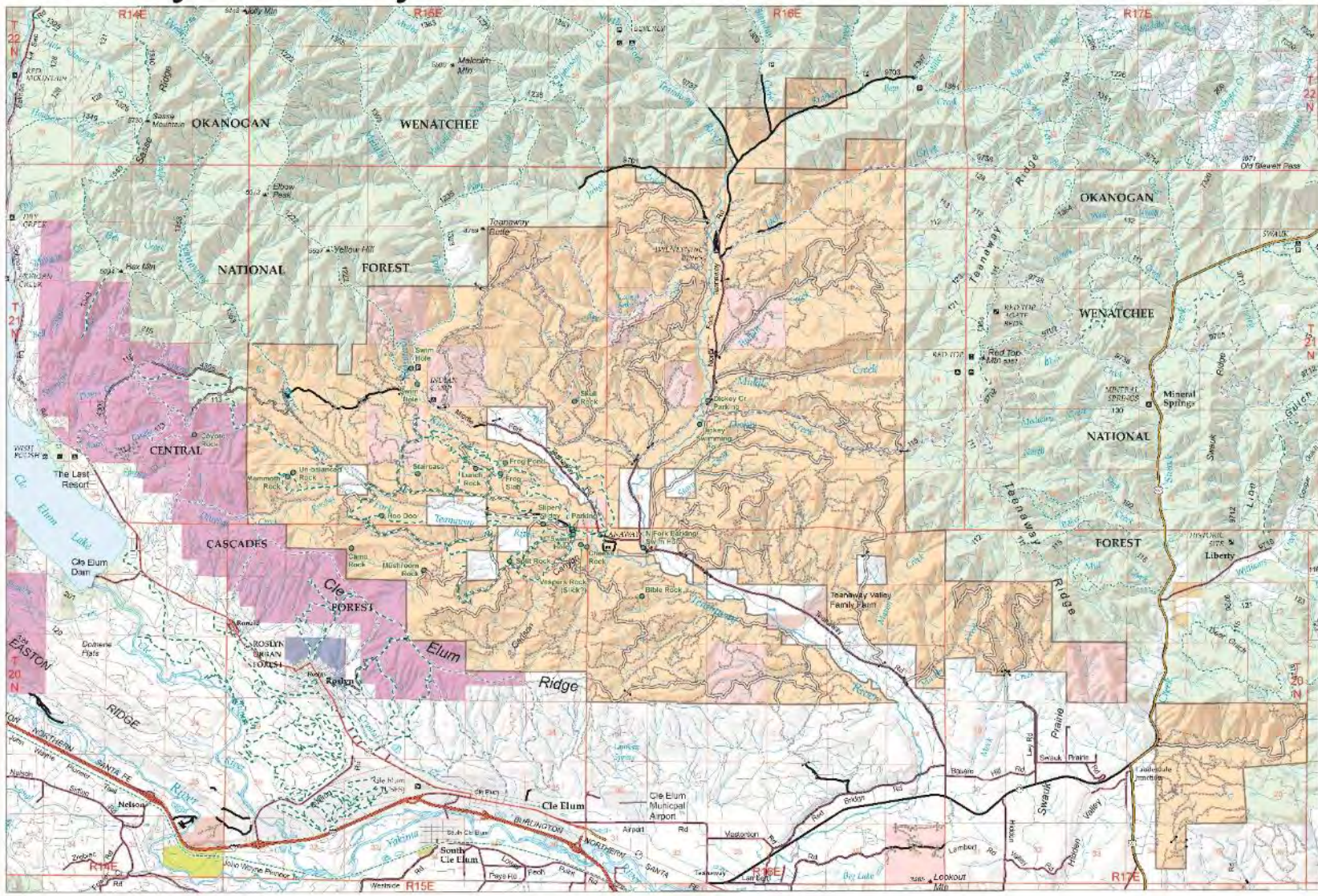
Biology
Soils
Geology
Management

Maps guide recreation planning efforts



Teanaway Community Forest Recreation Plan: Summer Recreation Planning

Prepared for
November 9, 2017
Planning Meeting



- Teanaway Trails
- Trail, Winter
- Trail, outside TCF
- Known recreation site
- Gate
- Other Physical Barrier

- Road Access**
- Open
 - Unknown
 - No Motorized Access
 - Abandoned
 - County Road
 - Other

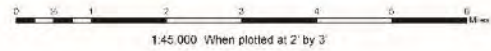
- DNR-Managed Lands**
- Teanaway Community Forest
 - Other DNR Managed Land
- Non-DNR State Lands**
- WA State Parks
 - WA Dept of Fish and Wildlife

- Federal Lands**
- US Forest Service
 - US Bureau of Land Management

- Other Lands**
- City or County Lands
 - The Nature Conservancy Lands
 - Roslyn Urban Forest
 - Planning Area Boundary
 - City Limits (Census 2010)

- Interstate Highway
- U.S. Highway
- State Route

- Recreation Symbols**
- Boat Launch
 - Camping
 - Picnic Area
 - Point of Interest
 - Ranger Station
 - Fire Lookout
 - Parking / Trailhead



Extreme care was used during the compilation of this map to insure accuracy. However, due to changes in ownership and the need to rely on outside information, the Department of Natural Resources cannot accept responsibility for errors or omissions. Therefore, there are no warranties which accompany this material.

DRAFT
This map is for planning / discussion purposes only.
Subject to change without notice.
Date: 11/22/2017



Recreation Land Suitability

Tri-Composite Criteria

Biological	Soils and Geology	Management
Wetlands & Wetlands Buffers 120'	Soils Risk for Recreation (Erosion)	Communication and Management Sites
Riparian: streams, open water, buffers Fish 120', Non-fish 50', Unknown 25'	Areas with High Potential for Landslides/Unstable Slopes	Rock Sources (existing and future)
Salmonids and Fish Habitat Informational Only **	Slope Percentage	Utility Easements
Deer & Elk Winter Range	100 - Year Flood Plains	Land Adjacent to Other Properties
Deer & Elk Calving/fawning range May 15 - June 15 Buffer 300 meters	Poorly Drained Soils	Wells and Water Sources
Sensitive, Threatened & Endangered Species (plants & animals)**	Areas with High Potential for Avalanche (Cabin Creek)	Riparian Restoration Areas
High Quality or Rare Plant Communities	Areas that have Moved in Previous Landslides	Cultural and Archeological Resources
Northern Spotted Owl / Northern Goshawk (March - August)		
Large Carnivores - Gray Wolf ** March 15 - June 15		** Items Not Shown on Map

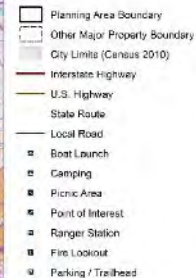
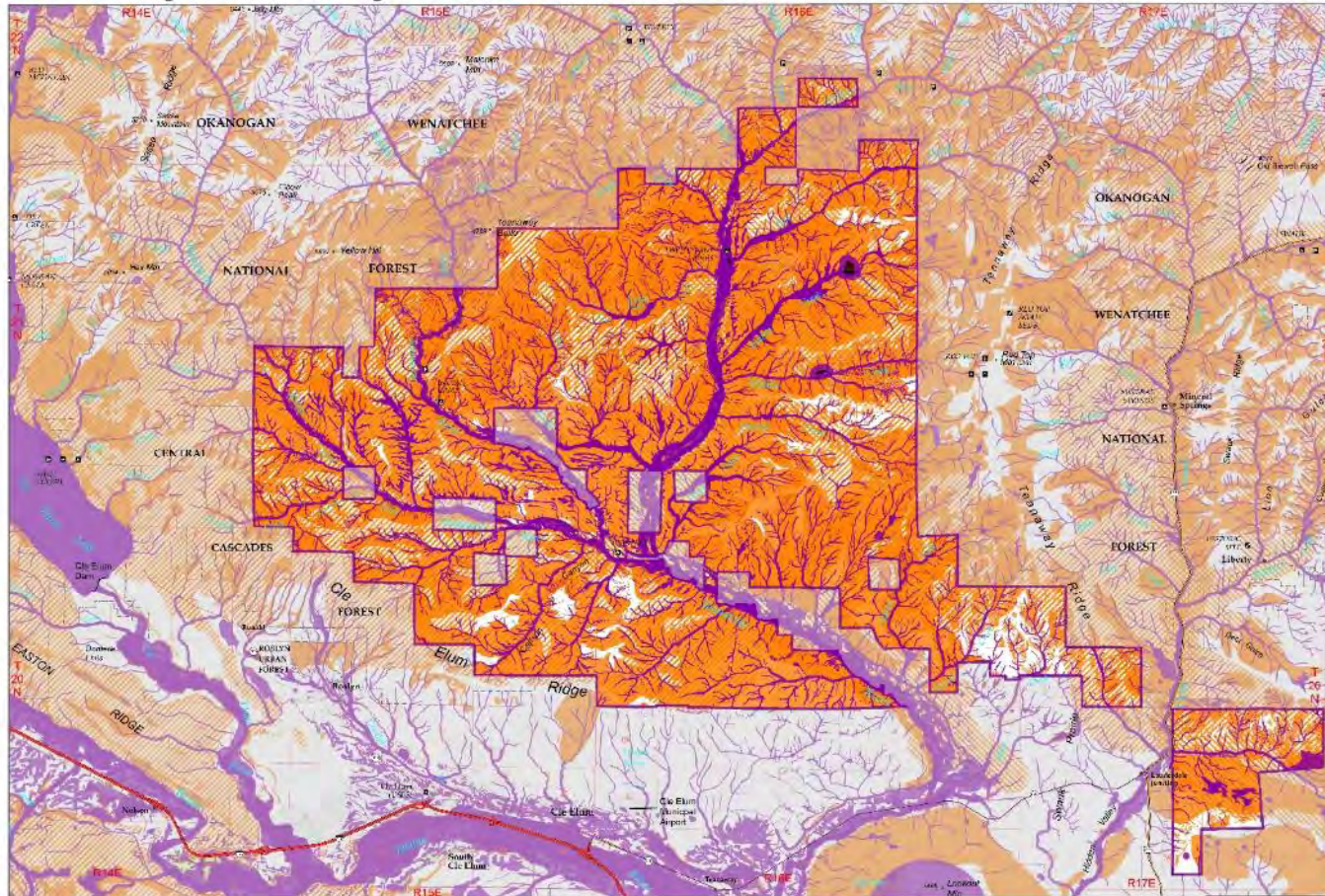
TEANAWAY COMMUNITY FOREST RECREATION PLAN

Non Motorized Trails

Teanaway Community Forest Recreation Plan

Tri Composite: Biological, Soils and Geology, Management
Recreation Suitability: Non-motorized Trails

Prepared for
July 13, 2017
Planning Meeting



1:46,000 When plotted at 2" by 3"

Note to Map Users: Extreme care was taken during the completion of this map to ensure accuracy. However, due to changes in ownership and the need to rely on outside sources of information, the departments of Natural Resources and Fish and Wildlife cannot accept responsibility for errors or omissions. Therefore, there are no warranties which accompany this material.

DRAFT
This map is for planning purposes only. Online to www.dnr.wa.gov



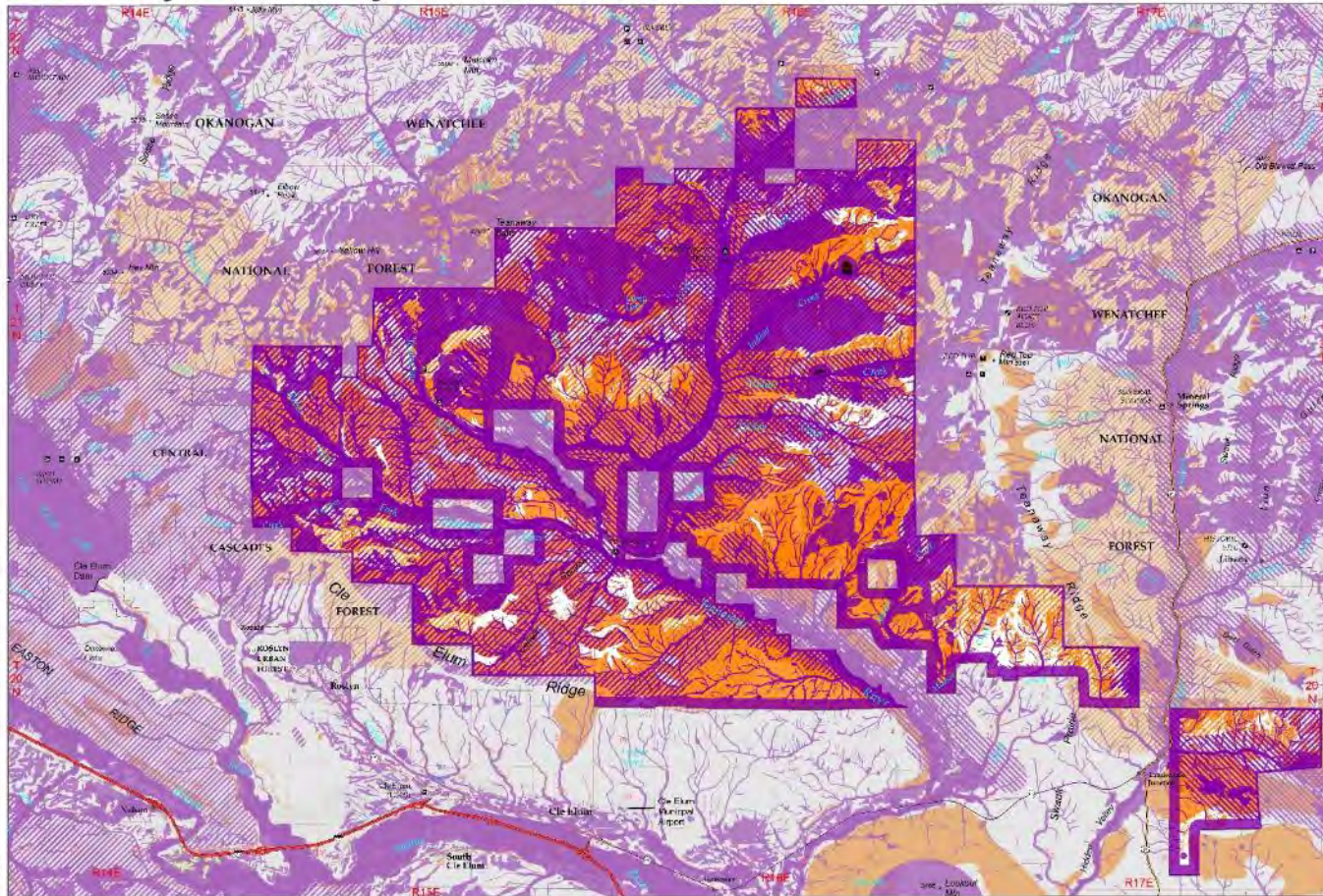
TEANAWAY COMMUNITY FOREST RECREATION PLAN

Motorized Trails

Teanaway Community Forest Recreation Plan

Tri Composite: Biological, Soils and Geology, Management
Recreation Suitability: Motorized Trails

Prepared for
July 13, 2017
Planning Meeting



Suitability Color Key

Orange	Moderate Suitability
Yellow	Moderate Suitability: March - August
Light Orange	Moderate Suitability: May 15 - June 15
Purple	Low Suitability
Light Purple	Low Suitability: March - August
Dark Purple	Low Suitability: May 15 - June 15
Black	Not Suitable

- Planning Area Boundary
- Other Major Property Boundary
- City Limits (Census 2010)
- Interstate Highway
- U.S. Highway
- State Route
- Local Road
- Boat Launch
- Camping
- Picnic Area
- Point of Interest
- Ranger Station
- Fire Lookout
- Parking / Trailhead



0 1 2 3 4 5 Miles
1:45,000 When printed at 2" by 2"

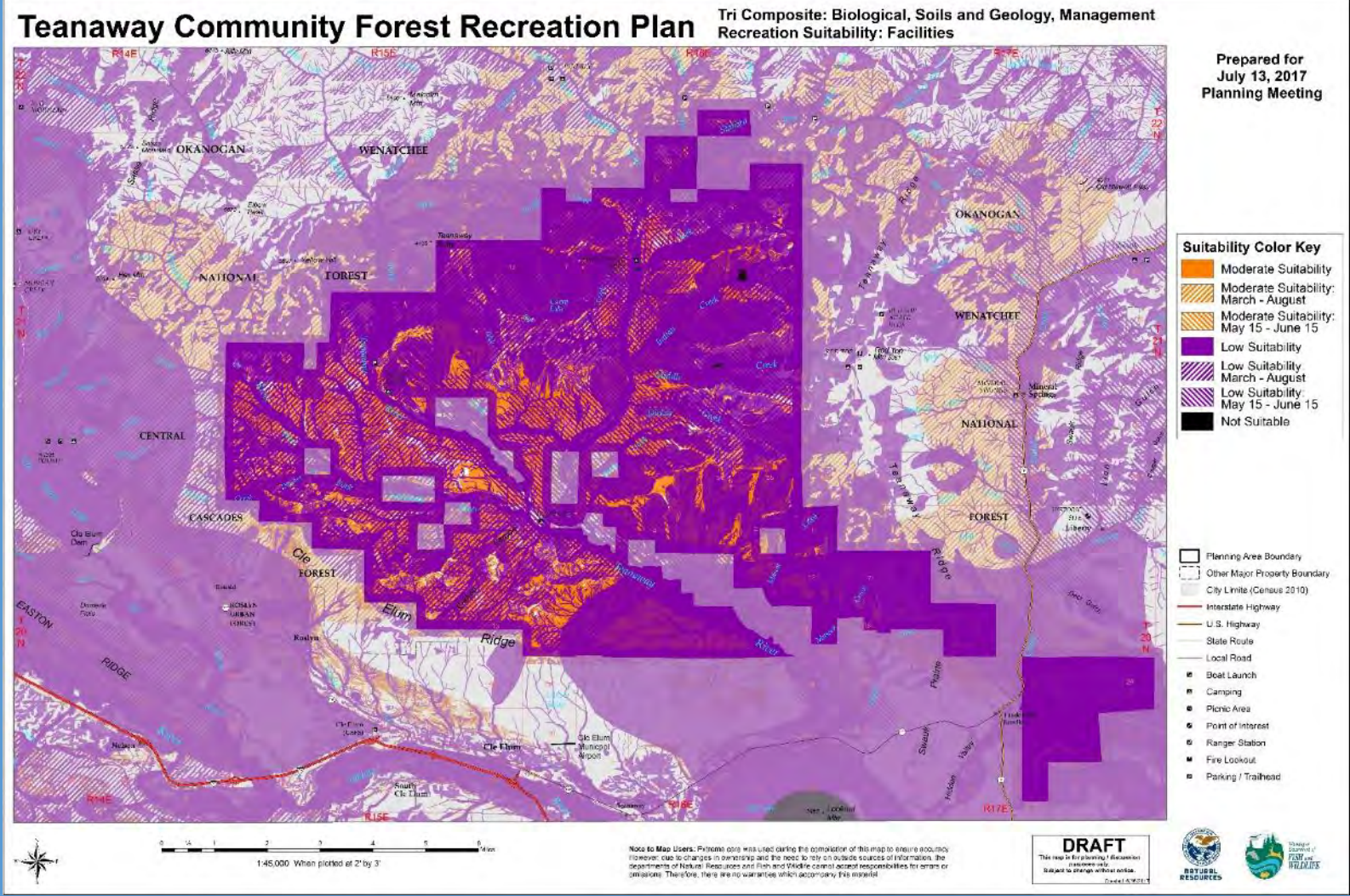
Note to Map Users: Extreme care was used during the compilation of this map to ensure accuracy. However, due to changes in ownership and the need to rely on outside sources of information, the departments of Natural Resources and Fish and Wildlife cannot accept responsibility for errors or omissions. Therefore, there are no warranties which accompany this product.

DRAFT
This map is for planning / discussion purposes only. It should not be used for other services.
Date: 6/15/17



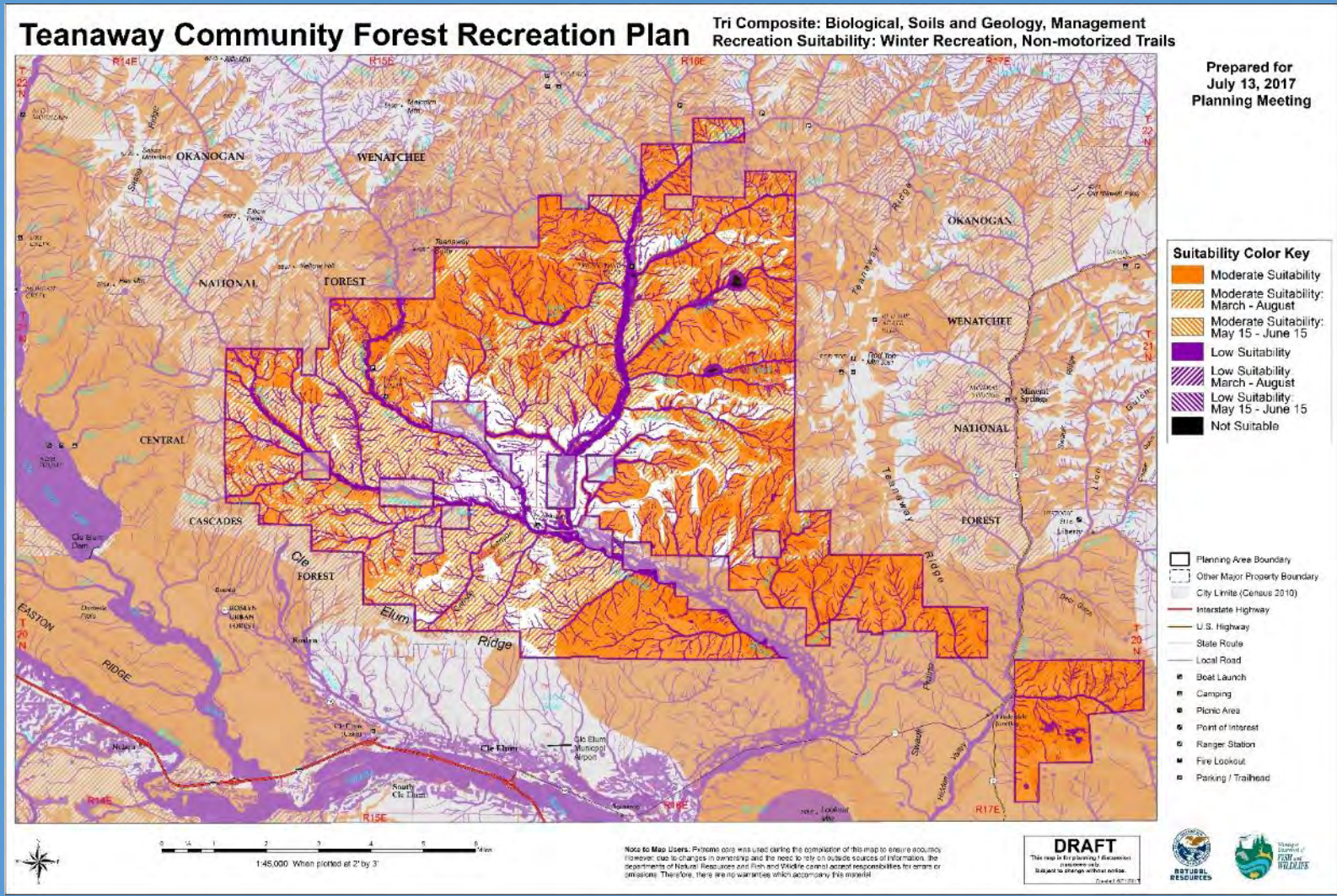
TEANAWAY COMMUNITY FOREST RECREATION PLAN

Facilities



TEANAWAY COMMUNITY FOREST RECREATION PLAN

Winter – Non Motorized Trails



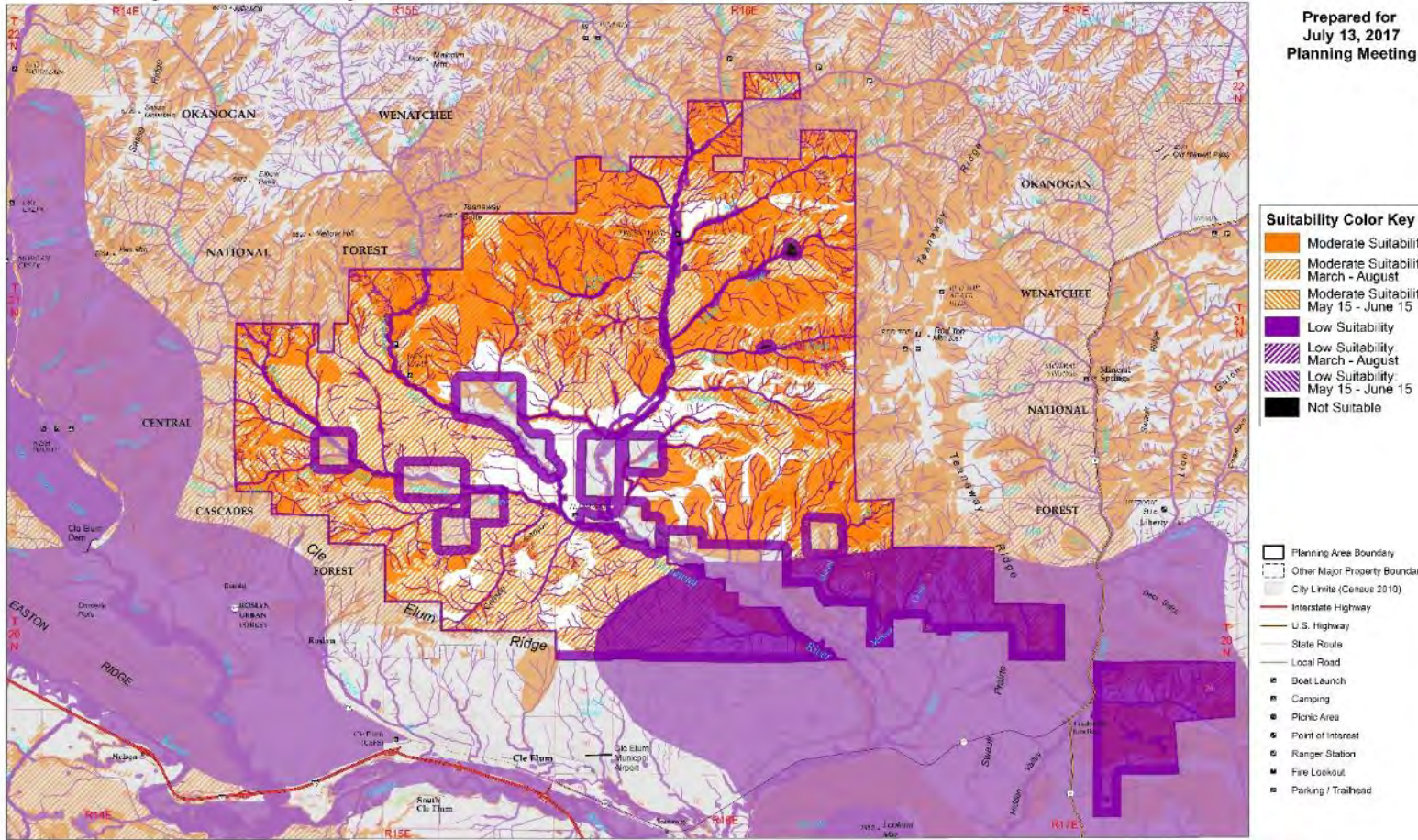
TEANAWAY COMMUNITY FOREST RECREATION PLAN

Winter – Motorized Trails

Prepared for
July 13, 2017
Planning Meeting

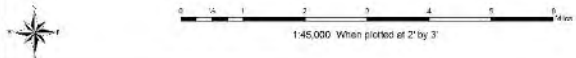
Teanaway Community Forest Recreation Plan

Tri Composite: Biological, Soils and Geology, Management
Recreation Suitability: Winter Recreation, Motorized Trails



- Suitability Color Key**
- Moderate Suitability
 - Moderate Suitability: March - August
 - Moderate Suitability: May 15 - June 15
 - Low Suitability
 - Low Suitability: March - August
 - Low Suitability: May 15 - June 15
 - Not Suitable

- Planning Area Boundary
- Other Major Property Boundary
- City Limits (Census 2010)
- Interstate Highway
- U.S. Highway
- State Route
- Local Road
- Boat Launch
- Camping
- Picnic Area
- Point of Interest
- Ranger Station
- Fire Lookout
- Parking / Trailhead



Note to Map Users: Private data was used during the compilation of this map to ensure accuracy. However, due to changes in ownership and the need to rely on outside sources of information, the departments of Natural Resources and Fish and Wildlife cannot accept responsibility for errors or omissions. Therefore, there are no warranties which accompany this product.

DRAFT
This map is for planning purposes only. It is subject to change without notice.
Date: 07/13/17



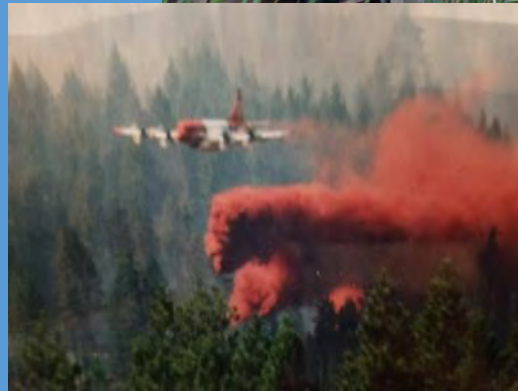
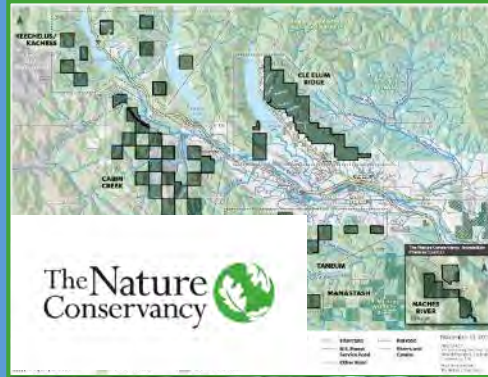
Field Trips

- Winter recreation
- Unique rock formations
- What does the purple stuff look like?
- USFS multi-use trails
- Camping areas and river access
- User interaction and enforcement



Committee Member Presentations

- Winter recreation
- TNC Central Cascades
- Equestrian
- Trout
- Kittitas Environmental Network
- Hunting, birding, fishing
- Mountain bicycle survey
- Motorcycle use
- Infrastructure
- Forest neighbors
- Forest history
- Hiking history



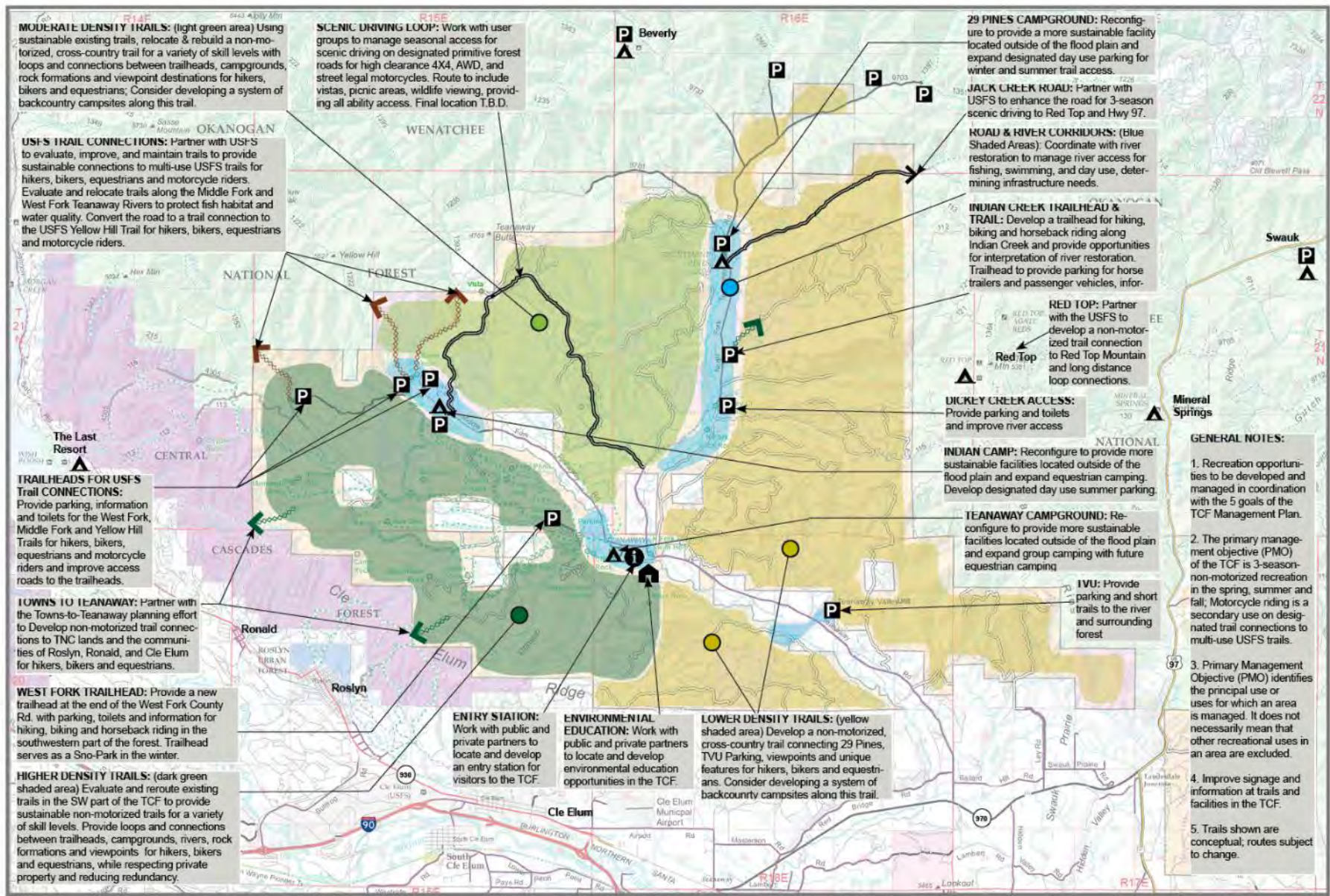
Teanaway Community Forest Recreation Survey

July 24 – August 24, 2017

2682 Total Responses

Powered by  SurveyMonkey





Teanaway Community Forest Summer Recreation Concepts

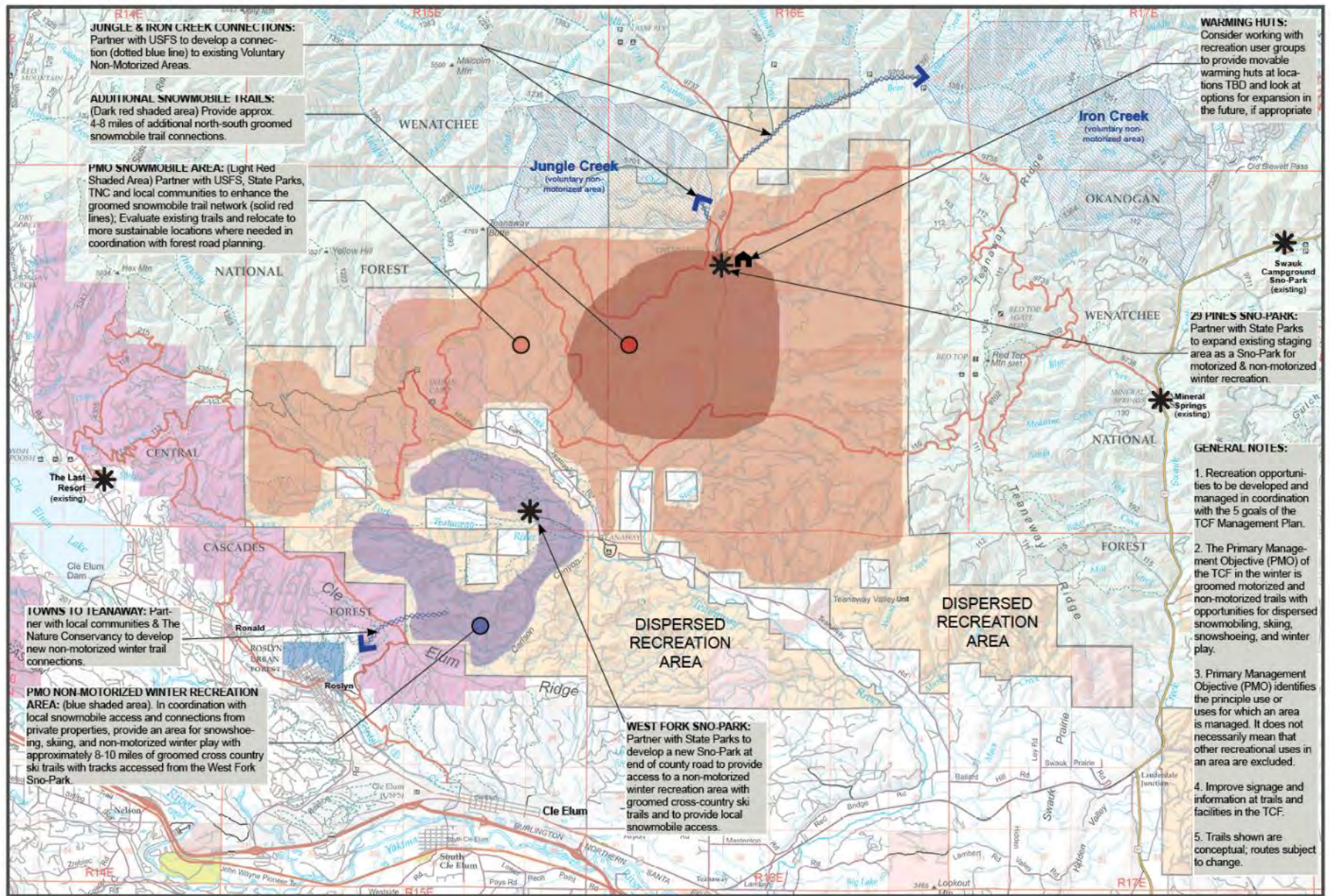
3/30/2018 DRAFT-TRAILS AND FACILITIES SHOWN
ARE CONCEPTS FOR DISCUSSION PURPOSES ONLY

KEY

- Non-motorized trails for hiking, biking and horseback riding
- Multi-Use trails for hiking, biking, horse & motorcycles
- Scenic driving roads, seasonal access

- Higher Density Trails
- Moderate Density Trails
- Lower Density Trails
- River and Road Corridor





Teanaway Community Forest Winter Recreation Concepts

03/30/218 DRAFT-TRAILS AND FACILITIES SHOWN
ARE CONCEPTS FOR DISCUSSION PURPOSES ONLY

KEY

- PMO Snowmobile Area with groomed trails.
- PMO Non-motorized winter recreation area with groomed cross-country ski trails.
- Groomed snowmobile trails to be evaluated and rerouted where needed
- Snowmobile trail sections to be rerouted
- Non-motorized connections for skiing and snow shoeing



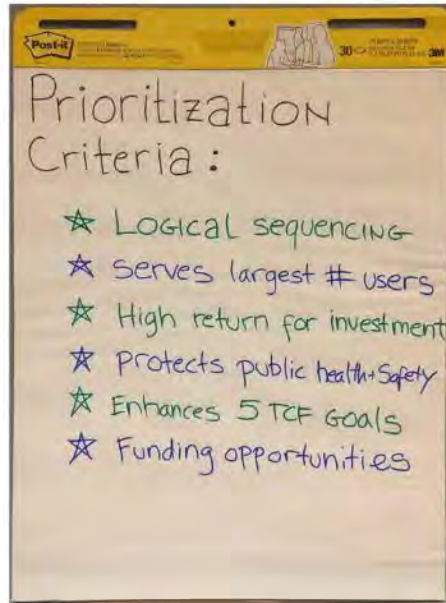
Teanaway Community Forest

March 8, 2018 Meeting
Recreation Planning Committee

Prioritization DOT EXERCISE

(Winter and Summer Recreation)

- Priority 1
- Priority 2
- Priority 3
- Priority 4



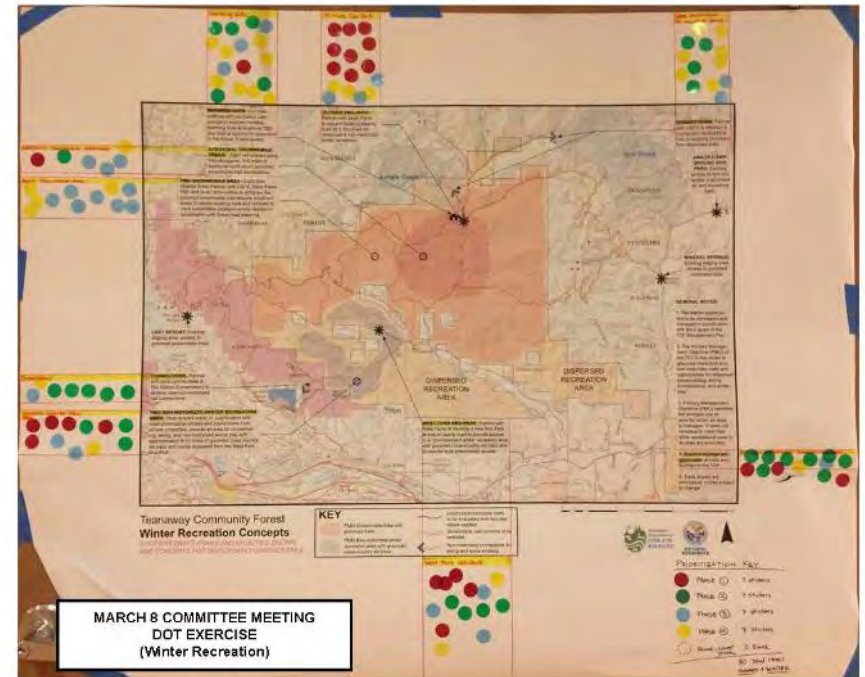
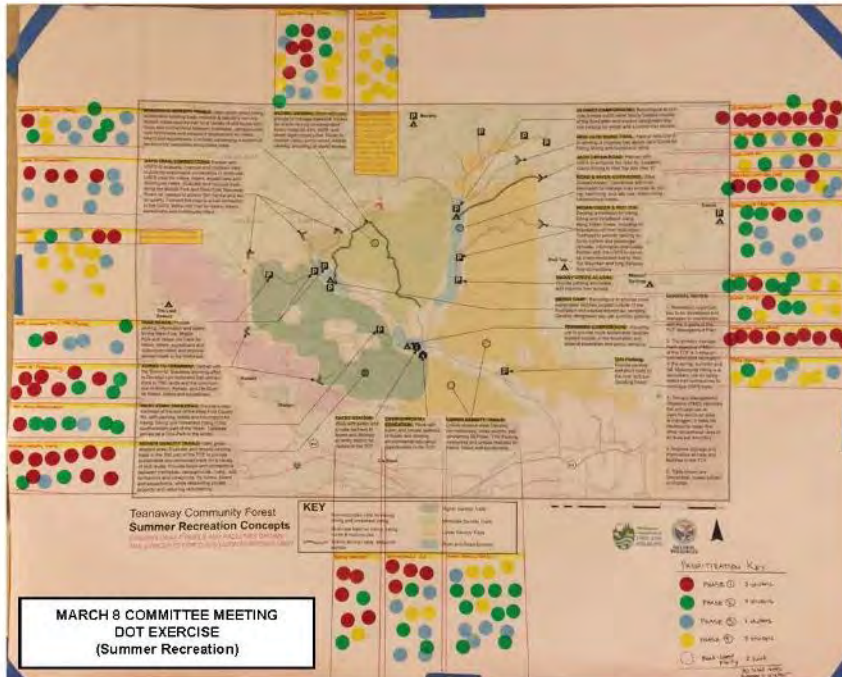
Dot Exercise - SCORING

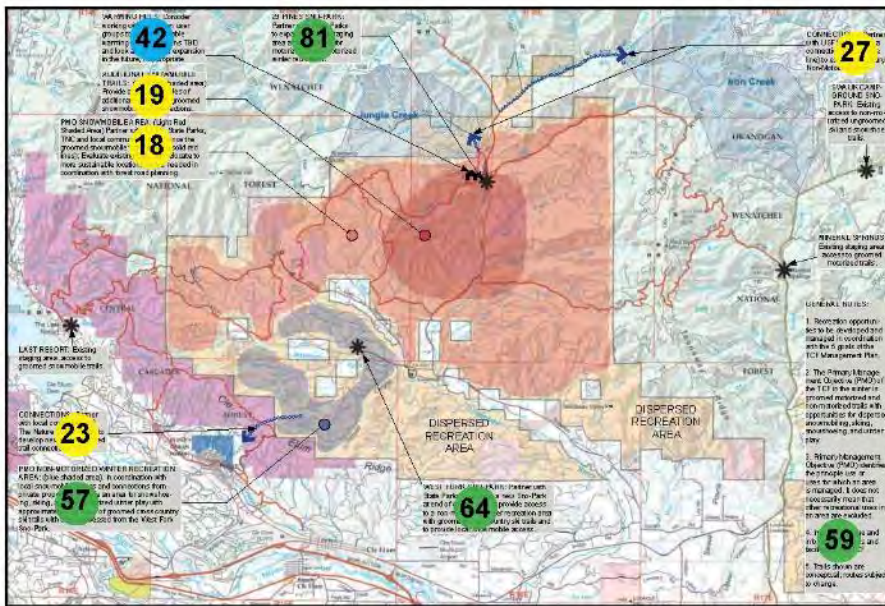
March 8, 2018 Committee Meeting

Project	Red Dots (8 points)	No. Dots	Red Sub T	Green Dots (4 points)	No. Dots	Green Sub T	Blue Dots (2 points)	No. Dots	Blue Sub T	Yellow Dots (1 point)	No. Dots	Yellow Sub T	Total Points	Phase
Summer Map														
Moderate Density Trails	8	1	8	4	4	16	0	5	10	1	2	2	36	II
USFS Trail connections	8	4	32	4	0	0	2	6	12	1	0	0	44	II
USFS Trail Trailheads	8	1	8	4	2	8	2	3	6	1	0	0	22	II
Towns to Teanaway (Summer)	8	7	56	4	1	12	7	0	0	1	0	0	68	II
West Fork Trailhead	8	1	8	4	5	20	2	1	2	1	0	0	30	II
Higher Density Trails	8	9	72	4	2	8	2	1	2	3	0	0	82	II
Entry Station	8	5	40	4	2	8	2	0	0	1	1	1	49	II
Environmental Education	8	4	32	4	1	12	4	5	10	1	2	2	56	II
Lower Density Trails	8	0	0	4	9	36	2	5	10	3	4	4	50	II
TWJ Parking	8	0	0	4	1	4	2	3	6	1	5	5	15	III
Teanaway Campground	8	9	72	4	0	0	2	0	0	1	0	0	72	II
Indian Camp	8	1	8	4	3	12	2	0	0	1	3	3	23	III
Dickey Creek Access	8	1	8	4	5	20	2	0	0	1	2	2	30	II
Indian Creek & Red Top	8	1	8	4	4	16	2	6	12	1	0	0	26	II
Road & River corridors	8	3	24	4	3	12	2	3	6	1	5	1	43	II
Jack Creek Road	8	1	8	4	1	4	2	2	4	1	2	1	17	III
29 Pines Campground	8	10	80	4	1	4	2	0	0	3	0	0	84	II
Scenic Driving Loops	8	5	40	4	4	16	2	4	8	1	5	1	72	II
Winter Map														
Additional Snowmobile Trails	8	1	8	4	1	4	2	1	2	1	1	1	19	III
PMO Snowmobile Area	8	0	0	4	0	0	2	7	14	1	4	4	18	III
Towns to Teanaway (Non-Moto Winter)	8	0	0	4	5	20	2	1	2	1	1	1	23	III
PMO Non-Motorized Winter Area	8	5	40	4	3	12	2	2	4	1	2	1	57	III
West Fork Sno-Park	8	5	40	4	4	16	2	3	6	1	2	2	64	III
Information & Signs	8	3	24	4	8	32	2	1	2	1	1	1	59	III
Connections to USFS Non-Moto Areas	8	0	0	4	4	16	2	2	4	1	7	7	27	III
29 Pines Sno-Park	8	9	72	4	0	0	2	3	6	1	3	3	83	III
Warming Huts	8	1	8	4	5	20	2	3	6	1	5	5	42	III

Note: 4305 Road Connection, Jack Ridge Trail, and Liars Prairie Connection have been taken off of projects list and map because of feasibility and easement issues that were discussed during the meeting.

9 Phase I
10 Phase II
8 Phase III



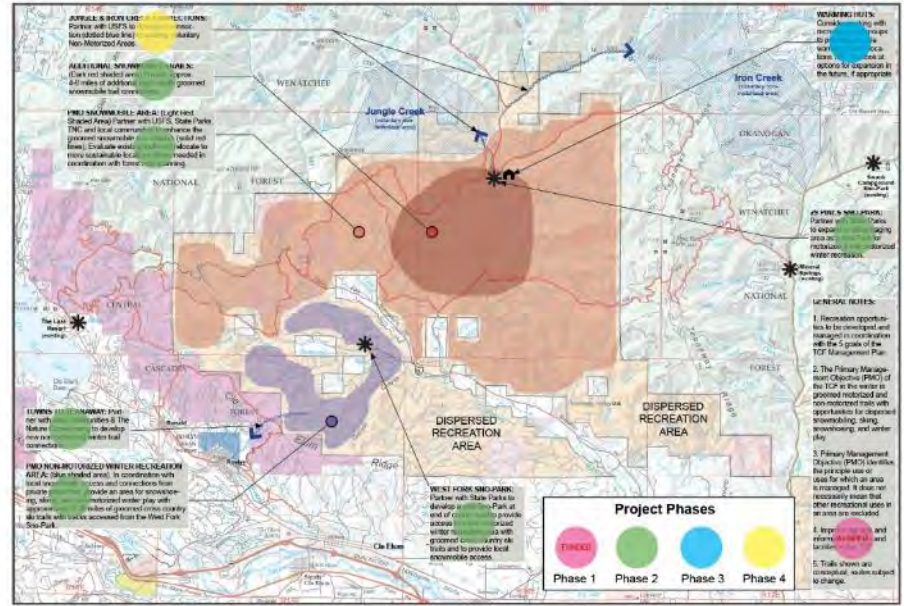


**March 2018 Committee Meeting
DOT EXERCISE RESULTS
POINTS AND PHASING
Winter Recreation**

KEY

- FMO Groomable Area with groomed trails
- FMO Non-groomable area with groomed cross-country skis trails
- Groomed non-groomable trails to be excluded and relocated when needed
- Skimmed & trail sections to be removed
- No groomed connections for skiing and snow shoeing

Phase 1 Phase 2 Phase 3



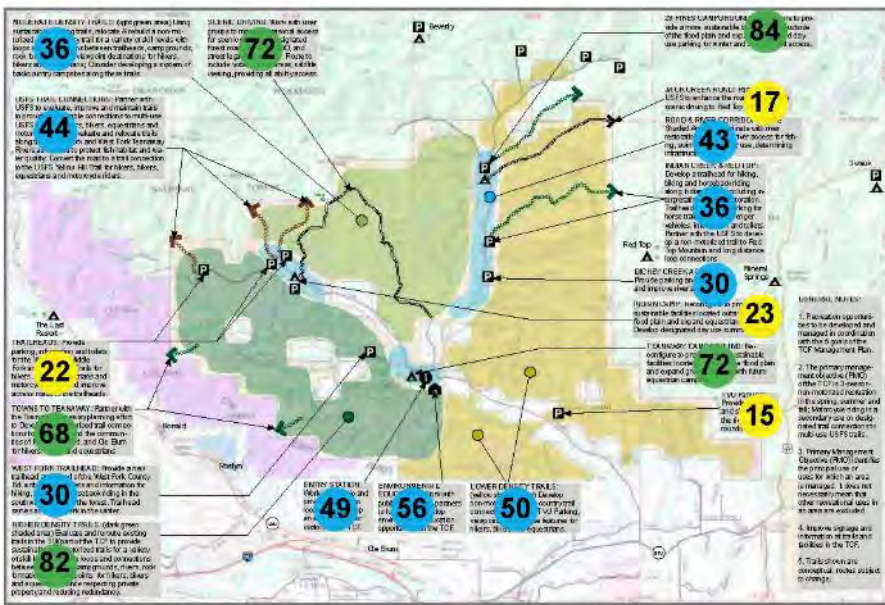
**Teanaway Community Forest
Winter Recreation Concepts
MAY 2018 DRAFT TRAILS AND FACILITIES SHOWING
CONCEPTS FOR DISCUSSION PURPOSES ONLY**

KEY

- FMO Groomable Area with groomed trails
- FMO Non-groomable area with groomed cross-country skis trails
- Groomed non-groomable trails to be excluded and relocated when needed
- Skimmed trail sections to be removed
- No groomed connections for skiing and snow shoeing

Project Phases

Phase 1 Phase 2 Phase 3 Phase 4

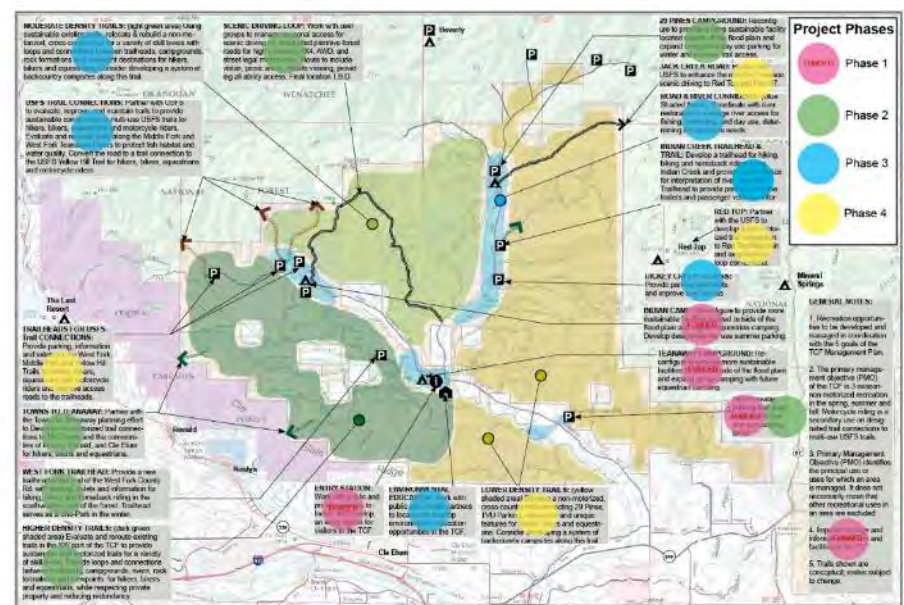


**March 2018 Committee Meeting
DOT EXERCISE RESULTS
POINTS AND PHASING
Summer Recreation**

KEY

- Non-groomed trails for hiking, biking and horseback riding
- Higher Density Trails
- Moderate Density Trails
- Lower Density Trails
- Road and Road Corridor

Phase 1 Phase 2 Phase 3



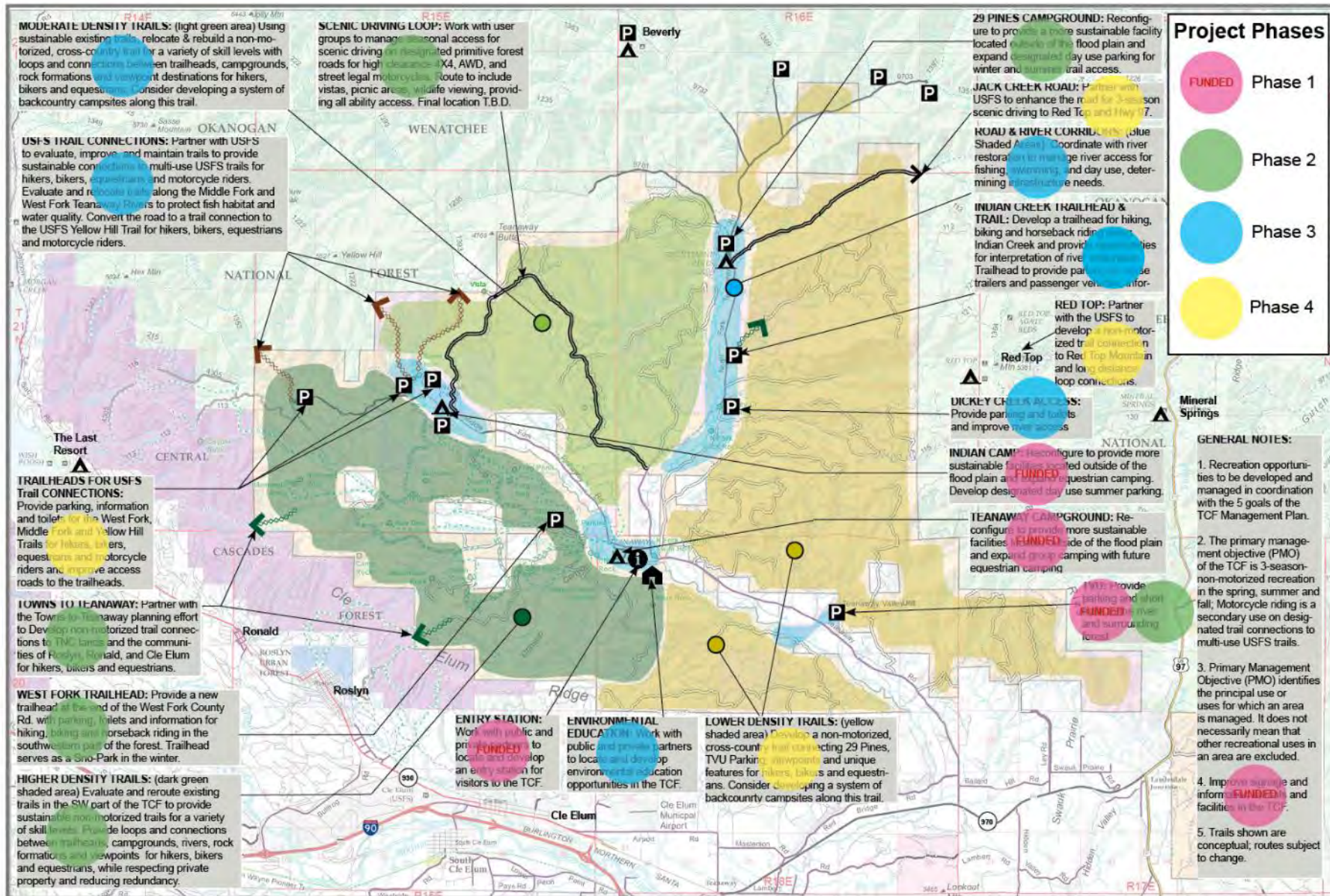
**Teanaway Community Forest
Summer Recreation Concepts
MAY 2018 DRAFT TRAILS AND FACILITIES SHOWING
CONCEPTS FOR DISCUSSION PURPOSES ONLY**

KEY

- Non-groomed trails for hiking, biking and horseback riding
- Higher Density Trails
- Moderate Density Trails
- Lower Density Trails
- Road and Road Corridor

Project Phases

Phase 1 Phase 2 Phase 3 Phase 4



Project Phases

- FUNDLED Phase 1
- Phase 2
- Phase 3
- Phase 4

GENERAL NOTES:

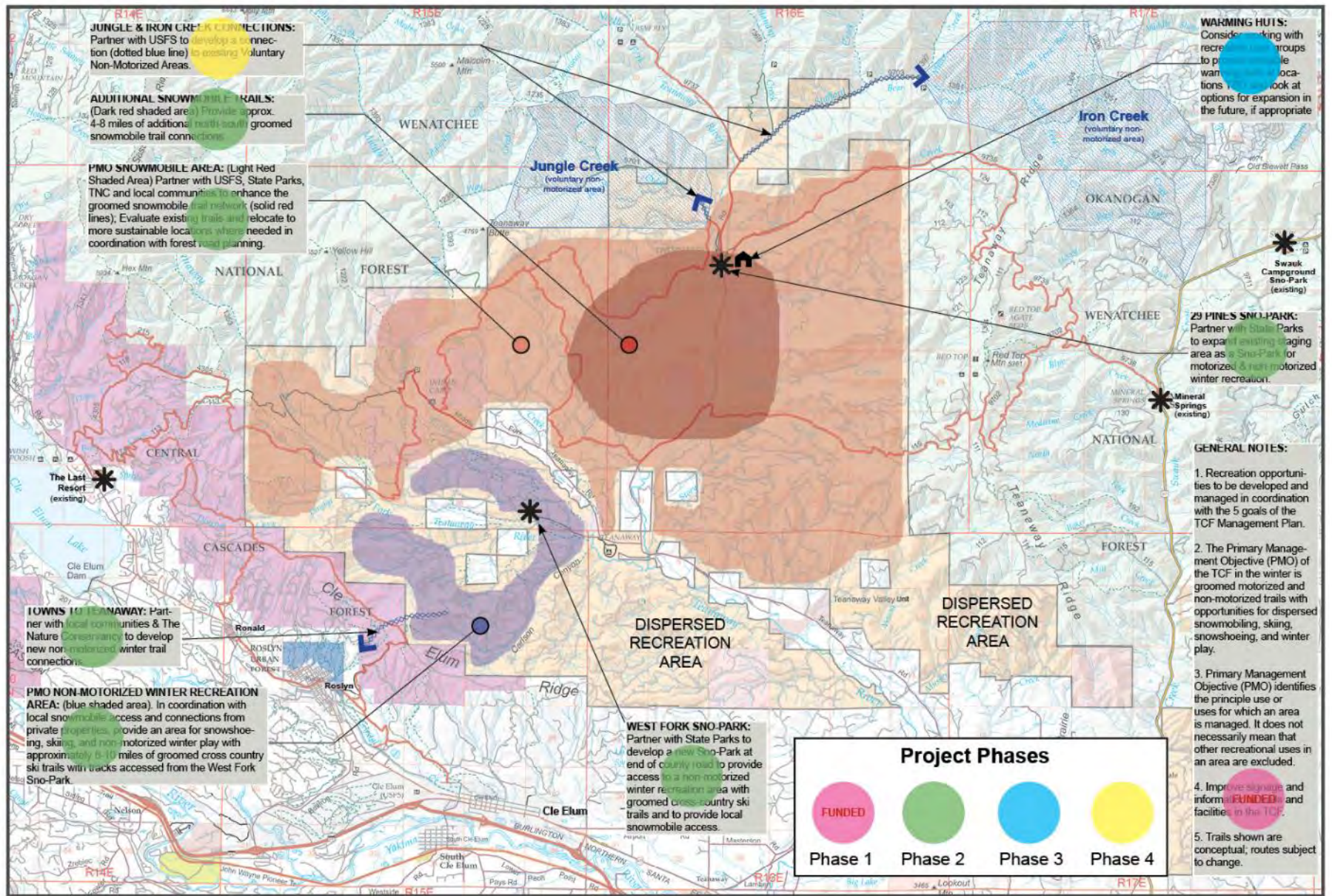
1. Recreation opportunities to be developed and managed in coordination with the 5 goals of the TCF Management Plan.
2. The primary management objective (PMO) of the TCF is 3-season non-motorized recreation in the spring, summer and fall; Motorcycle riding is a secondary use on designated trail connections to multi-use USFS trails.
3. Primary Management Objective (PMO) identifies the principal use or uses for which an area is managed. It does not necessarily mean that other recreational uses in an area are excluded.
4. Improvements and facilities in the TCF.
5. Trails shown are conceptual; routes subject to change.

**Teanaway Community Forest
Summer Recreation Concepts**
3/30/2018 DRAFT-TRAILS AND FACILITIES SHOWN
ARE CONCEPTS FOR DISCUSSION PURPOSES ONLY

KEY

	Higher Density Trails
	Moderate Density Trails
	Lower Density Trails
	River and Road Corridor
	Non-motorized trails for hiking, biking and horseback riding
	Multi-Use trails for hiking, biking, horse & motorcycles
	Scenic driving roads, seasonal access





Teanaway Community Forest Winter Recreation Concepts

03/30/218 DRAFT-TRAILS AND FACILITIES SHOWN ARE CONCEPTS FOR DISCUSSION PURPOSES ONLY



Teaway Community Forest: Project Implementation Phases

Currently Funded Projects

phase 1

ENTRY STATION: Work with public and private partners to locate and develop an entry station for visitors to the TCF.

TEANAWAY CAMPGROUND: Reconfigure campground to provide more sustainable facilities located outside of the river flood plain, Expand group camping with future equestrian camping.

INDIAN CAMP: Reconfigure campground to provide more sustainable facilities located outside of the river flood plain; Expand equestrian camping; Expand designated day-use parking.

SIGNAGE & INFORMATION: Improve signage and information at trails and facilities in the TCF.

TVU: Provide parking for non-motorized recreation

Phase 2 Projects

phase 2

TOWNS TO TEANAWAY: Partner with Towns-to-Teaway to develop non-motorized trail connections to TNC lands and the communities of Roslyn, Ronald, and Cle Elum for summer and winter recreation.

WEST FORK TRAILHEAD: Provide a new trailhead at the end of the West Fork County Rd. with parking, toilets and information for hiking, biking and horseback riding in the southwestern part of the forest.

HIGHER DENSITY TRAILS: (dark green shaded area) Evaluate and reroute existing trails in the SW part of the TCF to provide sustainable non-motorized trails for a variety of skill levels. Provide loops and connections between trailheads, campgrounds, rivers, rock formations and viewpoints for hikers, bikers and equestrians, while respecting private property and reducing redundancy.

29 PINES CAMPGROUND: Reconfigure and relocate portions of campground to provide more sustainable facilities located outside of the river flood plain

29 PINES TRAILHEAD: Expand designated day use parking for winter and summer trail access with toilets and information.

29 PINES SNO-PARK: Partner with State Parks to expand and manage existing staging area as a Sno-Park for motorized & non-motorized winter recreation.

PMO SNOWMOBILE AREA: (Red Shaded Area) Partner with USFS, State Parks, TNC and local communities to enhance the groomed snowmobile trail network in the northern part of the forest; Evaluate existing trails and relocate to more sustainable locations where needed in coordination with forest road planning. Provide approx. 4-8 miles of additional north-south groomed snowmobile trail connections to improve grooming efficiency.

WEST FORK SNO PARK: Partner with State Parks to manage the trailhead as a SNO-Park during the winter to provide access to the PMO non-motorized winter recreation area and to provide local snowmobile access

PMO NON-MOTORIZED WINTER RECREATION AREA: (Blue shaded area). In coordination with local snowmobile access and connections from private properties, provide an area for snowshoeing, skiing, and non-motorized winter play in the southwestern part of the forest, with approximately 8-10 miles of groomed cross country ski trails with tracks accessed from the West Fork Sno-Park.

TVU: Provide trails accessed from parking area to the river and surrounding forest; Provide toilets and information near the parking area.

TEANAWAY SCENIC DRIVING LOOP: Work with user groups to manage seasonal access for scenic driving on designated primitive forest roads for high clearance 4X4, AWD, and street legal motorcycles. Route to include vistas, picnic areas, wildlife viewing, providing all ability access. Final location T.B.D.

Phase 3 Projects

phase 3

ENVIRONMENTAL EDUCATION: Work with public and private partners to locate and develop environmental education opportunities in the TCF.

ROAD & RIVER CORRIDORS: (Blue Shaded Areas): Coordinate with river restoration to manage river access for fishing, swimming, and day use, determining infrastructure needs.

DICKEY CREEK ACCESS: Provide parking and toilets and improve river access

INDIAN CREEK TRAILHEAD AND TRAIL: Develop a trailhead for hiking, biking and horseback riding along Indian Creek, and provide opportunities for interpretation of river restoration. Trailhead to provide parking for horse trailers and passenger vehicles, information and toilets.

WARMING HUTS: Work with recreation user groups to provide movable warming huts at locations TBD and look at options for expansion in the future, if appropriate.

USFS TRAIL CONNECTIONS: Partner with USFS to evaluate, improve, and maintain sustainable connections to multi-use USFS trails for hikers, bikers, equestrians and motorcycle riders. Evaluate and relocate trails along the Middle Fork and West Fork Teaway Rivers to protect fish habitat and water quality. Convert the road to a trail connection to the USFS Yellow Hill Trail for hikers, bikers, equestrians and motorcycle riders.

MODERATE DENSITY TRAILS: (light green area) Using sustainable existing trails, relocate & rebuild a non-motorized, cross-country trail for a variety of skill levels with loops and connections between trailheads, campgrounds, rock formations and viewpoint destinations for hikers, bikers and equestrians; Consider developing a system of backcountry campsites along this trail.

Phase 4 Projects

phase 4

JACK CREEK ROAD: Partner with USFS to enhance the road for 3-season scenic driving to Red Top and Highway 97.

RED TOP CONNECTION: Partner with the USFS to develop a non-motorized trail connection from TNC to Redtop and long distance loop connections.

LOWER DENSITY TRAILS: (yellow shaded area) Develop a non-motorized, cross-country trail connecting 29 Pines, TVU Parking, viewpoints and unique features for hikers, bikers and equestrians. Consider developing a system of backcountry campsites along this trail.

TRAILHEADS FOR USFS TRAIL CONNECTIONS: Provide parking, information and toilets for the West Fork, Middle Fork and Yellow Hill Trails for hikers, bikers, equestrians and motorcycle riders and improve access roads to the trailheads.

WINTER JUNGLE & IRON CREEK CONNECTIONS: Partner with USFS to develop connections to existing Jungle Creek and Iron Creek Voluntary Non-Motorized Areas.

Next Steps

April - September

- May 10th – Advisory committee meeting
- Draft plan writing
- SEPA review
- Community meeting
- Update plan
- Agency adoption



Listening Stations

- Recreation land suitability
- Recreation concepts
 - Winter
 - Summer
- Project implementation
- Environmental education
- Commercial recreation/guides/events
- Camping



Teanaway Community Forest Recreation Planning

