

Fire Operating Budget

- Scoring is weighted to favor “low budget” districts. Makes a general assumption that low budget districts have a greater need for assistance.
 - ≤50,000 4 pts
 - 50,000 – 125,000 3 pts
 - 125,000 – 200,000 2 pts
 - 200,000 - 350,000 1 pts
 - > 350,000 0 pts

FAP Core Areas (see map on page 3) and Burn Risk

- VFA funding comes to DNR through a grant agreement with the USFS. The grant includes funding for several other programs (i.e. fire preparedness, forest health, forest nursery, stewardship forestry, urban forestry). All states receiving this annual funding are required to develop a “Forest Action Plan (FAP)” that provides a strategy for spending the grant funds in priority areas determined by the state. DNR’s FAP identifies “Core Areas” representing generally the state’s high fire areas.
- The intent of the FAP scoring is two-fold. 1) It shows we are including the FAP strategy in prioritization of where VFA funding is spent, and 2) the Core Areas provide a high level view of where fire danger is highest in proximity to DNR protection and USFS ownership.
- Districts receive the FAP score if any portion of their boundary intersects with a Core Area
 - Fuels Core Area 2 pts
 - Forest Health Core Area 1 pts
 - None 0 pts
- In addition to utilizing FAP Core Areas, applications are awarded points based on the Fire Risk Index, which identifies areas that have important values at risk due to wildfire and/or are costly areas to suppress wildfire.
 - High Risk 2 pts
 - Medium Risk 1 pts
 - Low Risk 0 pts

Project Type

- Intent is to provide priority to districts placing Federal Excess Personal Property (FEPP), Firefighter Property (FFP), and DNR Surplus Engines into service.
 - FEPP, FFP, DNR engines 1 pts

FEPP Replacement

- Intent is to provide districts an incentive to replace old and aging Federal Excess Personal Property (FEPP) equipment. Also benefits DNR by reducing the current FEPP inventory workload.
 - Yes 1 pts
 - No 0 pts

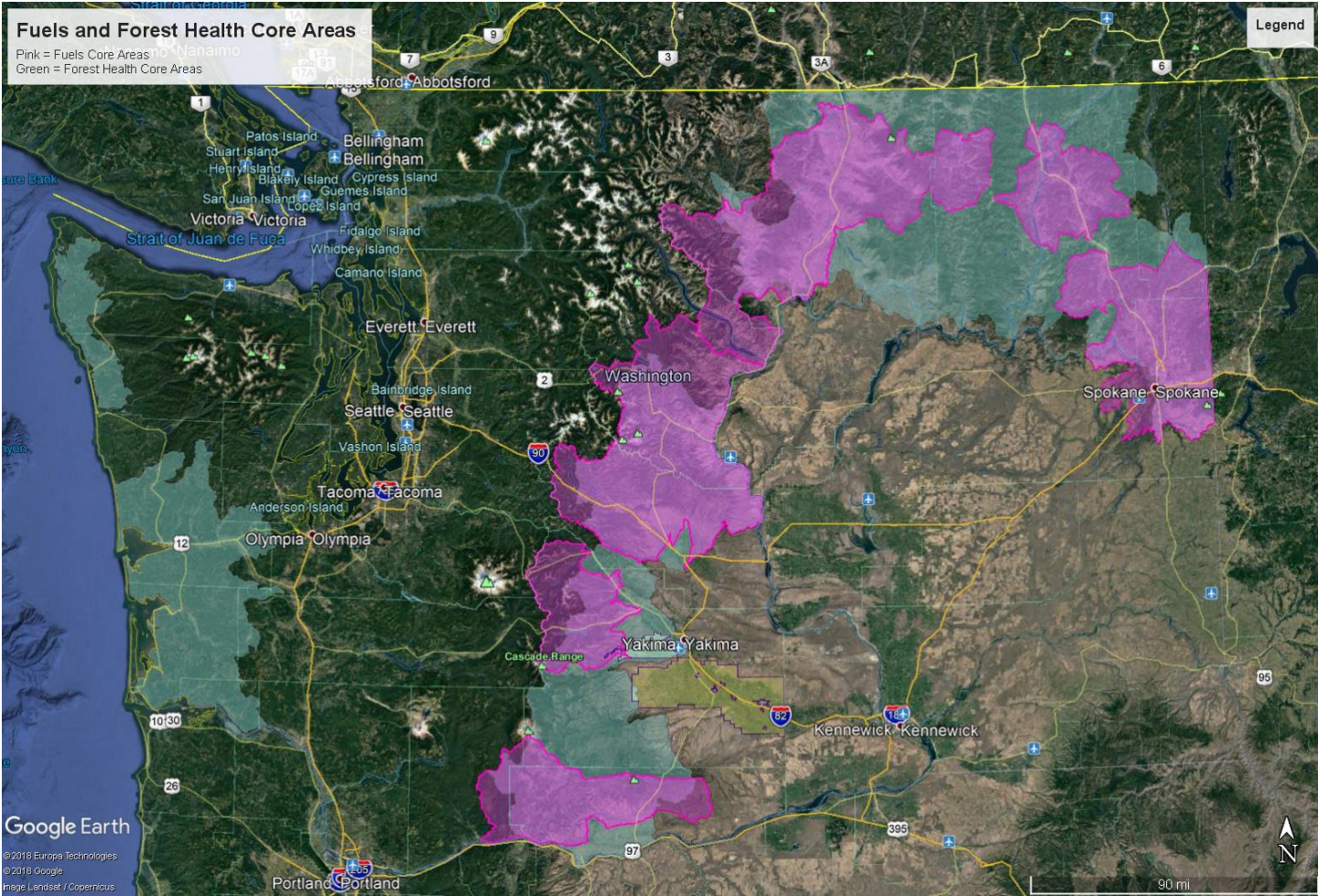
Average Annual Wildfire Responses

- Used as a tie breaker for applications with the same score.

Fuels and Forest Health Core Areas

Pink = Fuels Core Areas
Green = Forest Health Core Areas

Legend



Google Earth
© 2018 Europa Technologies
© 2018 Google
Image Landsat / Copernicus

90 mi