

# Public Auction Sale of Timber

Book 978

August 2017



WASHINGTON STATE DEPT OF  
**NATURAL  
RESOURCES**

# IMPORTANT NOTICES

## *Natural Resources (DNR)*

### **Governmental Regulatory Actions or Orders**

The purchaser assumes the risk of liabilities related to regulatory actions or orders by any government agency that may affect the operability of these timber sales. Such regulatory actions or orders include, but are not limited to, actions taken pursuant to the State Forest Practices Act, Chapter 76.09 RCW, and the Federal Endangered Species Act, 16 U.S.C. §§ 1531-1544. Please see timber sale contract clauses G-066 and G-220 for further information.

### **Threatened and Endangered Species**

DNR cannot verify the presence or absence of **any** threatened or endangered species that may affect the operability of the timber sale. Purchasers must rely on their own assessments.

### **Export Restricted**

All timber purchased under these state DNR contracts shall not be exported outside of the United States until the timber has been processed. Purchasers shall not violate any of the prohibitions in WAC 240-15-015 (relating to the prohibitions on export and substitution), WAC 240-15-025 (relating to reporting requirements), and WAC 240-15-030 (relating to enforcement). If purchasers knowingly violate WAC 240-15-015, purchasers shall be barred from bidding on or purchasing export restricted timber as provided.

### **Cover photos**

Timber Sales in this book are from state trust lands, managed to help build K-12 public schools, state universities, colleges, prisons, mental hospitals, the state Capitol; and to support local services in many counties.

**Top left:** State Forest Lands are managed to provide revenue to the counties in which they are located such as the Pacific County Courthouse in South Bend, Washington. Northwest Bridge Company of Portland, Oregon completed construction of the courthouse building in June of 1911. One unusual feature of the historic building is an "art glass dome" that crowns the structure. The courthouse is listed on the National Register of Historic Places.  
**Photo:** DNR/Tom Heller

**Bottom left:** Grade school students learn from high school students in the North Mason School District during Students in the Watershed day in the Tahuya State Forest trust lands. **Photo:** DNR/Staff

**Right:** Landscape view of DNR managed trust lands in western Washington. **Photo:** DNR/Staff

## Table of Contents

Certification Opportunities for DNR Timber Purchasers	Page 3
Bidder/Purchaser Auction and Bidding Information	Page 5
Summary of All Sales Being Offered in August	Page 11
Little Foot	Page 13
Way Out	Page 19
Friar Tuck	Page 25
Carrol Flats FIT	Page 29
Sealed Bid Form and Instructions	Page 35
Statewide Bid Bond and Instructions	Page 37
Timber Sale per Sale Bid Bond and Instructions	Page 41
Log Sort Sealed Bid Form and Instructions	Page 45





## **Certification Opportunities for DNR Timber Purchasers**

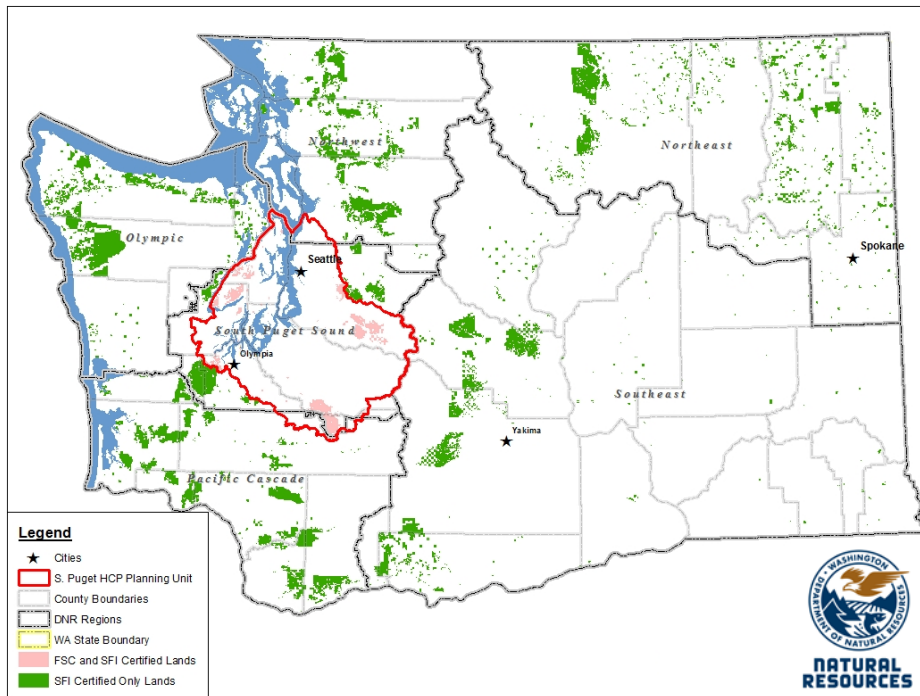
Certified forests are grown to an approved set of standards which demonstrate environmentally responsible, socially beneficial, and economically viable management practices that promote responsible forestry. This unique commitment to responsible forestry recognizes that forest landowners play a critical role in ensuring the long-term health and sustainability of our forests.

Forest Stewardship Council® (FSC®) is an independent, non-profit organization that promotes responsible management of the world's working forests through the development of forest management standards, a voluntary certification system, and trademarks that provide recognition and value to products bearing the FSC label in the marketplace. FSC standards ensure forestry is practiced in an environmentally responsible, socially beneficial, and economically viable way.

Sustainable Forestry Initiative Inc. is an independent, non-profit organization internationally endorsed and accepted around the world. The Sustainable Forestry Initiative® (SFI) program is based on the premise that responsible environmental behavior and sound business decisions can coexist. Its three-chamber Board of Directors governs all aspects of the SFI® program, with equal representation from the environmental, economic, and social sectors.

Currently, all Department of Natural Resources (DNR)-managed forested state trust lands in Washington State are certified under the SFI program Standard. Lands within DNR's South Puget Habitat Conservation Plan Planning Unit, located within parts of King, Pierce, Thurston, Lewis, Kitsap, and Mason counties, are dually certified under both the FSC-US Forest Management Standard and the SFI program Standard.

Certification under each standard involves an inspection audit of the landowner's forest management activities by an independent, accredited third-party to verify that it meets specified forest management principles. If the forest unit complies with the specific standard, the landowner receives a certificate of conformance ensuring that responsible forestry is being practiced. Both standards encourage integration of perpetual growing and harvesting of trees with strong measures to protect wildlife, plants, soil, water, and air quality. Both standards provide a seal of approval that forests certified under these principles are well-managed. The global marketplace recognizes and endorses multiple forest certification standards. Each standard has individual market niches. By being dually certified, DNR can maximize its customer base and provide choices to the consumer.



DNR's FSC certificate number is: BV-FM/COC-080501

DNR's SFI certificate number is: BV-SFIS-US09000572

DNR-managed forested state trust lands within the South Puget Habitat Conservation Plan Planning Unit (located within parts of King, Pierce, Thurston, Lewis, Kitsap, and Mason counties) are certified as being in compliance with the Forest Stewardship Council Pacific Coast Regional Standard.

To learn more about chain of custody and demonstrating that your timber is derived from a responsibly managed forest and/or to learn more about becoming a participant in the FSC Program, visit <https://us.fsc.org/>.

To learn more about DNR timber sales certified under the FSC Standard, visit [www.dnr.wa.gov](http://www.dnr.wa.gov).

FSC A.C. owns all right, title, and interest in and to the Forest Stewardship Council trademarks.

All DNR-managed forested state trust lands across the state have been certified as being in compliance with the Sustainable Forestry Initiative program Standard.

To learn more about chain of custody and demonstrating that your timber is derived from a responsibly managed forest and/or to learn more about becoming a participant in the SFI program, visit [www.sfiprogram.org](http://www.sfiprogram.org).

To learn more about DNR timber sales certified under the SFI program Standard, visit [www.dnr.wa.gov](http://www.dnr.wa.gov).

SFI Marks are registered marks owned by Sustainable Forestry Initiative Inc.

**To learn more about certification on DNR-managed forested state trust lands, visit**

[http://www.dnr.wa.gov/BusinessPermits/Topics/TimberSaleAuction/Pages/lm\\_forest\\_certification.aspx](http://www.dnr.wa.gov/BusinessPermits/Topics/TimberSaleAuction/Pages/lm_forest_certification.aspx) or contact:

**Product Sales & Leasing Division, Product Sales Section:**

Tom Shay, Assistant Division Manager, 360-902-1561, [thomas.shay@dnr.wa.gov](mailto:thomas.shay@dnr.wa.gov)  
 Steve Teitzel, Operations, 360-902-1741, [steve.teitzel@dnr.wa.gov](mailto:steve.teitzel@dnr.wa.gov)

**Forest Resources Division, HCP and Scientific Consultation Section:**

Allen Estep, Assistant Division Manager, 360-902-2898, [allen.estep@dnr.wa.gov](mailto:allen.estep@dnr.wa.gov)  
 Douglas Kennedy, Forest Certification Program Lead, 360-902-1283, [douglas.kennedy@dnr.wa.gov](mailto:douglas.kennedy@dnr.wa.gov)

# Washington State Department of Natural Resources (DNR)

## **Bidder's/Purchaser's Inspection of Sale Area and Forest Products**

Acreage estimates and volume estimates contained within each timber notice of sale and each timber sale contract are made only for administrative and identification purposes. Except as expressly provided by the timber sale contract, the purchaser shall be responsible for paying the entire purchase price, even if the actual acreage or timber volume varies from the estimated quantity or volume shown.

All prospective bidders have the opportunity and are expected to inspect the sale area and the forest products located thereon. Bidders shall not rely on any representations by the State including, but not limited to, acreage estimates, volume estimates, appraisal or pre-bid documentation. The successful bidder/purchaser will further warrant that they have entered the timber sale contract without any reliance upon the DNR's volume estimates, acreage estimates, appraisals, pre-bid documentation, or any other representation by the DNR.

*Any timber sale contract arising out of these public auctions will require the successful purchaser to warrant that they are entering the timber sale contract based solely upon their own judgment of the value of the forest products, formed after their own examination and inspection of both the timber sale area and the forest products being sold.*

## **Exclusion and Disclaimer of Warranties**

The PARTIES AGREE that the IMPLIED WARRANTIES OF MERCHANTABILITY AND FITNESS FOR A PARTICULAR PURPOSE, and ALL OTHER WARRANTIES EXPRESS OR IMPLIED, ARE EXCLUDED from this transaction, and shall not apply to the goods sold. For example, THE FOLLOWING SPECIFIC MATTERS ARE NOT WARRANTED, and are EXCLUDED from this transaction:

- a. ***The merchantability of the forest products.*** The use of the term "merchantable" in any document is not intended to vary the foregoing.
- b. ***The condition of the forest products.*** All forest products will be conveyed "AS IS."
- c. ***The acreage contained within any sale area.*** Any acreage descriptions appearing in the timber notices of sale, timber sale contract, timber sale map or other documents are estimates only, provided solely for administrative and identification purposes.
- d. ***The volume, quality, or grade of the forest products.*** The descriptions of the forest products to be conveyed are estimates only, made solely for administrative and identification purposes.
- e. ***The correctness of any soil or surface conditions, presale construction appraisals, investigations, and all other pre-bid documents prepared by or for the State.*** These documents have been prepared for the State's appraisal purposes only.
- f. ***That the sale area is free from threatened or endangered species, or their habitat.*** The State is not responsible for any interferences with forestry operations that result from the presence of any

threatened or endangered species, or the presence of their habitat, within the sale area.

g. *That the forestry operations to be performed under this contract will be free from regulatory actions by governmental agencies.* The State is not responsible for actions to enforce regulatory laws, such as the Washington Forest Practices Act (Chapter 76.09 RCW), taken by the Department of Natural Resources or any other agency that may affect the operability of these timber sales.

h. Items contained in any other documents prepared for or by the State.

Please also see timber sale contract clause G-060 for further information.

## **BIDDING PROCEDURES FOR TIMBER AUCTIONS**

*The general requirements that follow are a part of all Timber Notices of Sale to be auctioned by the Department of Natural Resources (DNR).*

### **General Information**

*The State reserves the right to waive minor irregularities and the right to reject any or all bids.*

- A. This book contains the timber notices of sale and maps for each timber sale scheduled to be auctioned. More specific information can be obtained by contacting the appropriate region office at the number listed on the back cover of this book.
- B. The timber notice of sale is a summary of sale information. For more specific information, interested parties are encouraged to view the Appraisal Packets on the DNR Internet Site @ [www.dnr.wa.gov](http://www.dnr.wa.gov), this will take you directly to the Product Sales Section. The Appraisal Packets contain **DRAFT** copies of the timber notice of sale, map, contract, road plan, cruise data, precruise and cruise narrative, Forest Practices Application (FPA).
- C. The sale preview packets may be obtained at no charge for individual sales by visiting the appropriate region office.
- D. Timber sale contracts contain extensive terms and conditions that will be binding upon successful high bidders. Each bidder should carefully review all terms contained in the appropriate **DRAFT** timber sale contract prior to bidding on a sale, and should review the final contract prior to signing. **DRAFT** timber sale contracts are contained in the preview and presales packets and are available upon request at the respective region office.
- E. Sales advertised in this book have not been approved by the Board of Natural Resources and are subject to the Board's approval before they will be sold. The Board meets and approves sales approximately six weeks prior to auction. All sales are subject to confirmation by the DNR under RCW 79.15.120.
- F. The State does not guarantee the accuracy of any information contained herein pertaining to particular sales. Therefore, all prospective purchasers are expected to make their own independent inspections and appraisals prior to bidding.
- G. If any conflict exists between the information in the Timber Notice of Sale, timber sale map,



sale preview packets and that in the timber sale contract, the **signed contract will prevail**.

H. Purchasers must pay the Forest Excise Tax on the bid price, permanent road construction costs, and other considerations. The tax rate is 5% without the EARR credit and 4.2% with the credit. For more information contact the Department of Revenue, Forest Tax Section at 1-800-548-8829.

I. **Within 30 days of sale confirmation, the apparent high bidder will provide to the State the Performance Security** specified on each Notice of Sale. **The successful bidder also agrees to return a signed contract to the State within 30 days of confirmation.** Failure to provide a signed contract to the state within 30 days of confirmation may result in a loss of bidder's rights to the products sold and forfeiture of initial deposit moneys.

J. Each DNR region office has information about sales offered in that region. For further information, contact the respective DNR region office. Region office addresses and telephone numbers appear on the back cover of this booklet.

K. The purchaser assumes the responsibility for any costs associated with extra maintenance or repair levied by a county for any county road used by the purchaser.

## **Bidding Process**

A. All timber will be auctioned using the sealed bid method.

B. Bids submitted on day of auction must be in the bid box at the specified auction location before 10:00 a.m. The respective DNR region office must receive mailed bids by 4:30 p.m., on the last business day before the auction. Bidders assume all risk for the method of delivery.

C. The DNR has the right to reject bid forms that are completed incorrectly. *All bid forms must have an original signature on behalf of the person or entity submitting the bid, and must be on the form provided in this booklet or a photocopy thereof. Revised documents are not permissible.* Bidding instructions are on the back of the Sealed Bid Form. A bid deposit must be included in the sealed bid envelope unless using a Timber Sale Statewide Bid Bond.

D. All bids must include the completed Sealed Bid Form and bid deposit.

E. Bids will be opened in each respective region in the order in which sales appear in the Public Auction Sale of Timber book (alphabetically by county and by agreement number). Sales added after the book is printed will be inserted to retain this order. Sort sales may be auctioned out of this sequence at the State's convpignce.

F. If a tie bid occurs, the names of the tie bidders will be placed in a hat and the successful bidder will be determined by a drawing.

G. For sales offered on a stumpage basis, the apparent high bidder on a particular sale will have the option of withdrawing additional sealed bids submitted for any remaining sales to be auctioned. The apparent high bidder must exercise this option within two minutes after the apparent high bidder is announced. **This option is not available for sales offered on a delivered basis.**

## **Auction Time and Location**

Auctions will start at 10:00 a.m. and close at 4:00 p.m. on the date and at the location specified in each Timber Notice of Sale.

## **Bid Deposits**

- A. Required bid deposits are listed on each Timber Notice of Sale.
- B. Bid deposits must be in the form of cash, certified check, cashiers' check, money order or bid bond.
- C. Bid bonds may be either a Timber Sale Statewide Bid Bond or a Timber Sale Per Sale Bid Bond.
- D. All bid deposits shall be submitted by the person or entity submitting the bid and made payable to the Department of Natural Resources. **Third party deposits will not be accepted.**

### **Timber Sale Per Sale Bid Bonds**

- A. The Per Sale Bid Bond shall guarantee payment of the bid deposit **within ten days of auction.**
- B. The balance between the bid bond and the Initial Deposit payment is due **by 4:30 p.m., on the day of auction.**
- C. Additional forms and instructions for a Per Sale Bid Bond are available at any DNR region office.

### **Timber Sale Statewide Bid Bond**

- A. Statewide Bid Bonds shall guarantee payment of the Initial Deposit on any statewide timber sale while the bond is in effect.
- B. The Statewide Bid Bond must be received by the Department of Natural Resources, Product Sales and Leasing Division, P.O. Box 47014, Olympia, Washington, 98504-7014, ten days in advance of the auction date. The bond shall be in the amount of \$150,000.00.
- C. Successful bidders using a Statewide Bid Bond must pay the total Initial Deposit payment (10% of the total bid price) **by 4:30 p.m., on the day of the auction.**
- D. A Statewide Bid Bond cannot be used to secure the Initial Deposit payment due the day of auction.
- E. Additional forms and instructions for a statewide bid bond are available at any DNR region office.

### **Payments**

The initial deposit for a sale is 10% of the total bid value as submitted by the apparent high bidder (25% if the bidder is a defaulter as defined under WAC 332-140-300) and never less than \$5,000.00 for lump sum sales. For Lump Sum sales appraised at less than \$5,000.00, the entire bid value is due on day of auction.

- A. Apparent high bidders using cash, certified check, cashiers' check or money order as a bid deposit must pay the total Initial Deposit amount by 4:30 p.m. on auction day.
- B. Apparent high bidders using a Timber Sale Per Sale Bid Bond as a bid deposit must pay the difference between the bid deposit and the total initial deposit by 4:30 p.m., on the day of auction. The bid bond amount must be replaced with a certified check, cashiers' check, bank draft, cash, money order, or wire transfer within ten days of the auction.
- C. Apparent high bidders using a Timber Sale Statewide Bid Bond must pay the entire Initial Deposit amount by 4:30 p.m. on the day of auction.

### **Fees due on the day of sale must be paid by 4:30 p.m.**

All payments must be in the form of a certified check, cashiers' check, bank draft, cash, money order or wire transfer.

## **Eligibility to Bid**

In order to bid on State timber sales you must be:

- 18 years of age (or have a co-signer who meets the eligibility requirements)
- Licensed to do business in the State of Washington
- Eligible to bid on Export Restricted timber
- Authorized to submit bids

## **Authorized Representatives**

Company officers or company authorized representatives may bid on State sales, sign State documents, or sign checks. A list of authorized representatives and their specific authorities must be submitted, in writing, to the Department of Natural Resources, Product Sales and Leasing Division, P.O. Box 47014, Olympia, Washington, 98504-7014, ten days in advance of the auction. A company owner or officer must sign this submittal.



**Summary Report of All Sales for the Month of August 2017**

---

**Board Sales**

<u>County</u>	<u>Region</u>	<u>Agree #</u>	<u>FSC® Sale Name</u>	<u>Volume</u>	<u>Value</u>
Clallam	Olympic	93650	LITTLE FOOT	6,397	\$1,238,000.00
Pacific	Pacific Cascade	94685	WAY OUT	3,756	\$678,000.00
Skagit	Northwest	95063	FRIAR TUCK	2,584	\$791,000.00
Yakima	Southeast	95242	CARROL FLATS FIT	2,670	\$1,278,710.00
			<b>Total</b>	=====	=====
				15,407	\$3,985,710.00



*Scan with your smartphone or tablet to go  
to the August 2017 timber auction page*





TIMBER NOTICE OF SALE

SALE NAME: Little Foot

AGREEMENT NO: 30-093650

AUCTION: August 30, 2017 starting at 10:00 a.m., Olympic Region Office, Forks, WA

COUNTY: Clallam

SALE LOCATION: Sale located approximately 5 miles Southwest of Port Angeles, WA

PRODUCTS SOLD AND SALE AREA:

All timber except trees marked with a band of blue paint or bounded out by leave tree area tags and all downed red cedar or any timber that has been on the ground for 5 years or more ( 5 years is defined by more than 1.5 inches of sap rot), bounded by timber sale boundary tags and logged areas in Unit 1; timber sale boundary tags and Little River Road along the southern boundary in Unit 2; timber sale boundary tags and Little River Road along the northern edge in Unit 3; timber sale boundary tags in Unit 4; all timber bounded by right of way boundary tags on part(s) of Sections 28, 29, 32 and 33 all in Township 30 North, Range 6 West, W.M., containing 260 acres, more or less.

CERTIFICATION: This sale is certified under the Sustainable Forestry Initiative® program Standard (cert no: BV-SFIS-US09000572)

ESTIMATED SALE VOLUMES AND QUALITY:

Table with columns: Species, Avg DBH, Ring Count, Total MBF, and MBF by Grade (1P, 2P, 3P, SM, 1S, 2S, 3S, 4S, UT). Rows include Douglas fir, Hemlock, Red cedar, Red alder, Grand fir, Silver fir, and Sale Total.

MINIMUM BID: \$1,238,000.00

BID METHOD: Sealed Bids

PERFORMANCE SECURITY:

\$100,000.00

SALE TYPE: Lump Sum

EXPIRATION DATE: December 31, 2019

ALLOCATION: Export Restricted

BID DEPOSIT: \$123,800.00 or Bid Bond. Said deposit shall constitute an opening bid at the appraised price.

HARVEST METHOD: 53% ground, 23% cable and 24% Cable and/or self-leveling equipment. Cable Yarding will not be allowed before 7:00 am or after 6:00 pm. without written permission of the Contract Administrator. Tracked skidder, shovel, self-leveling equipment and cable are allowed in areas mapped as "Ground ". Tracked skidders, feller-buncher and shovels shall not operate on sustained slopes over 40%. Self-leveling ground based equipment permitted on slopes up to 60 percent. Falling and Yarding will not be permitted from November 1 to April 30 unless authorized in writing by the Contract Administrator.



## TIMBER NOTICE OF SALE

---

**ROADS:** 80.95 stations of required construction. 61.10 stations of required reconstruction. 59.45 stations of optional construction. 60.90 stations of optional reconstruction. 178.80 stations of required maintenance. 3.80 stations of optional maintenance. 40.60 stations of road commissioning. 65.10 stations of road decommissioning if built. Road construction, reconstruction, maintenance, rock haul or timber haul will not be permitted on any road from November 1 through April 30 or on weekends or on state recognized holidays unless authorized in writing by the contract administrator.

### ACREAGE DETERMINATION

**CRUISE METHOD:** Sale area was 100% GPS, sale units were cruised using a variable plot sample

**FEES:** \$113,547.00 is due on day of sale. \$9.00 per MBF is due upon removal. These are in addition to the bid price.

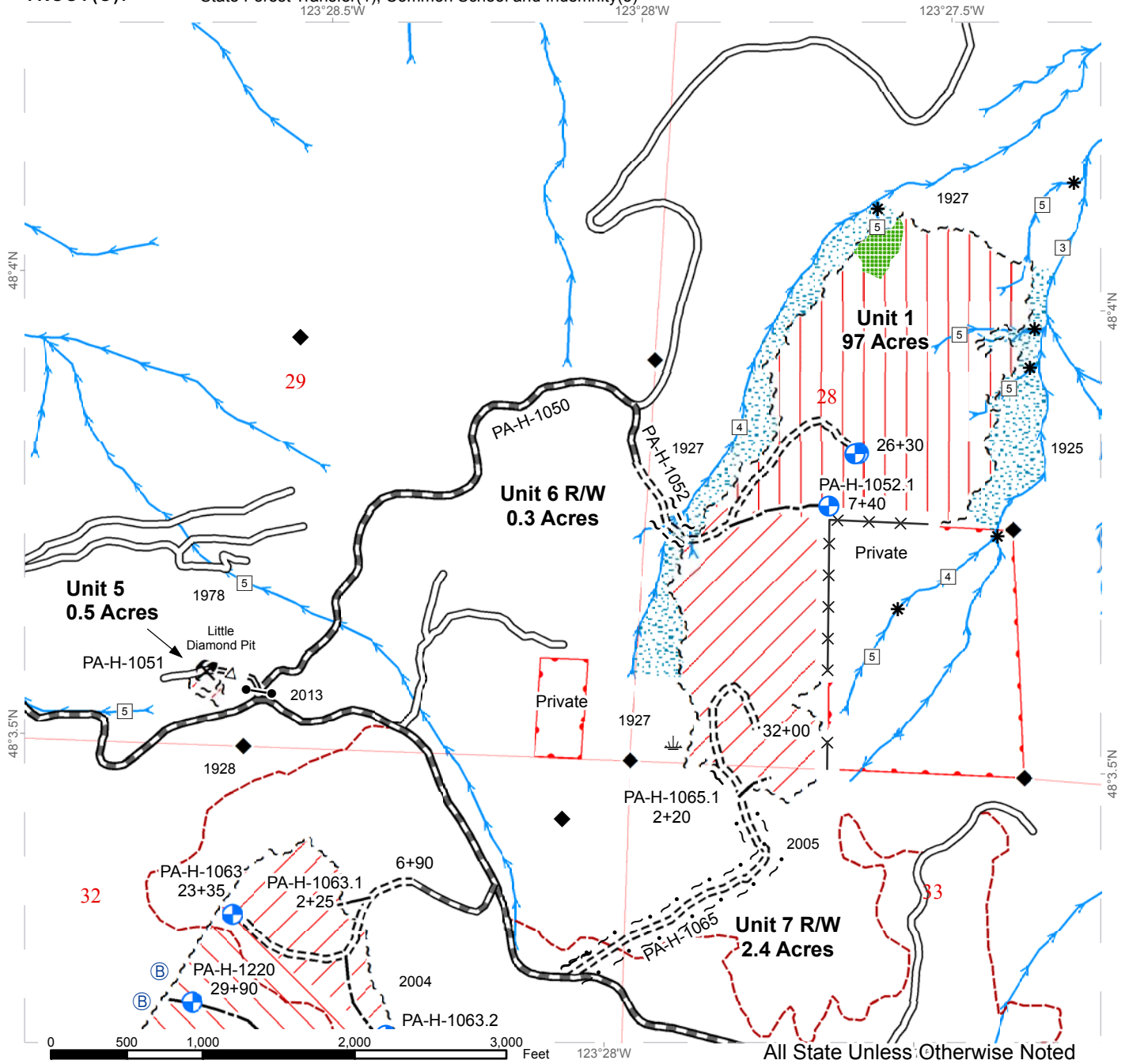
**SPECIAL REMARKS:** Hazard Abatement requirements are 100' for County Roads and 200' for residences. Hazard abatement will include pullback of logging debris greater than 4 inches within 100 feet of Little River Road. The existing private bridge east of the PA-H-1300 road is not to be used for any activities related to this timber sale. Purchaser shall provide and install a concrete slab bridge, a portable steel modular bridge, and two gate installations. There are locked gates on the PA-H-1000 and the PA-H-1050 - contact the Olympic Region Dispatch Center at 360-374-2800 to obtain an AA-1 key.



# TIMBER SALE MAP

**SALE NAME:** LITTLE FOOT  
**AGREEMENT #:** 93650  
**TOWNSHIP(S):** T30R06W  
**TRUST(S):** State Forest Transfer(1), Common School and Indemnity(3)

**REGION:** Olympic Region  
**COUNTY(S):** CLALLAM  
**ELEVATION RGE:** 1349-2408



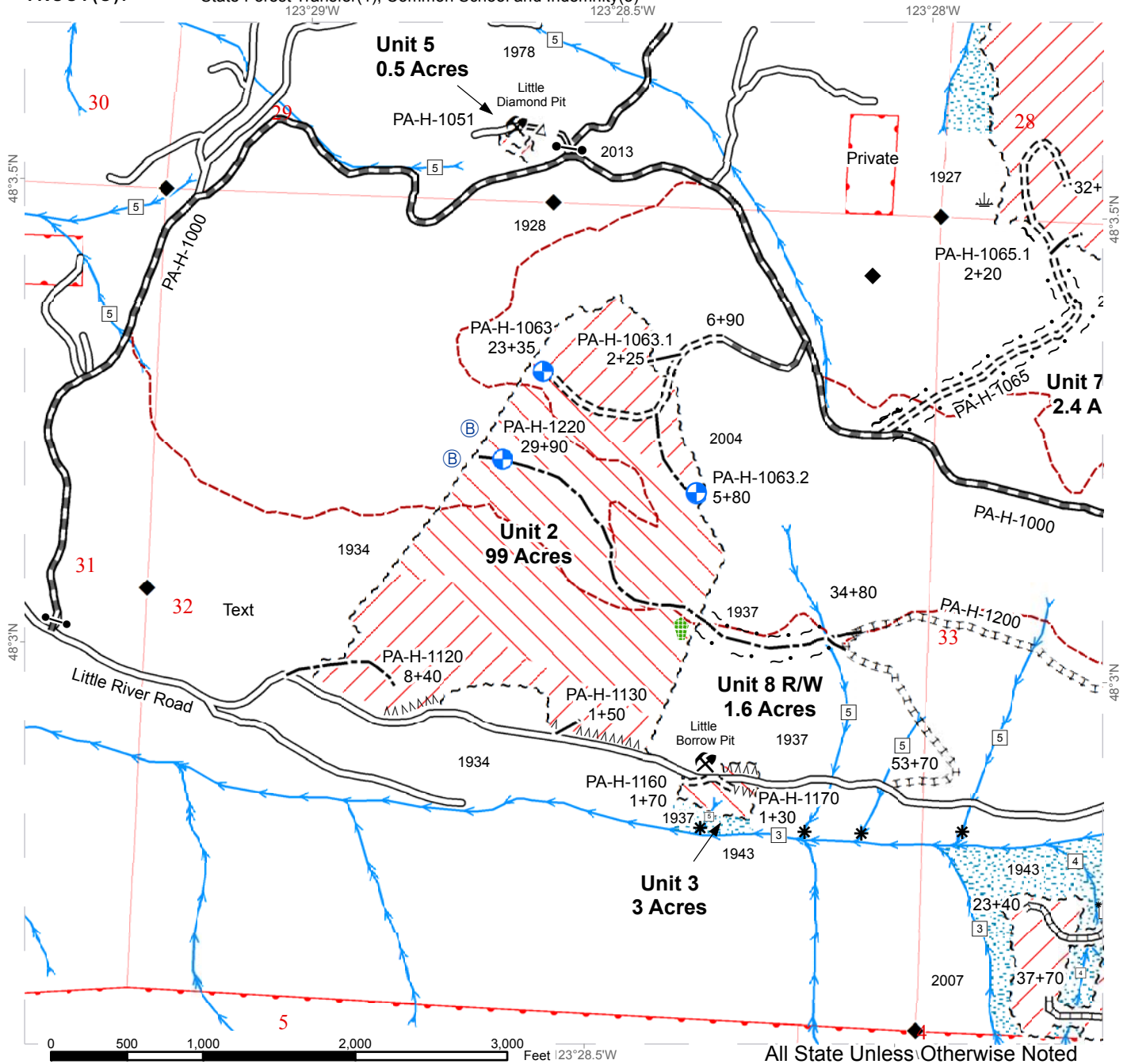
All State Unless Otherwise Noted

--- Sale Boundary Tags	⚡ Pit	⋯ Hazard Abatement
⋯ Right of Way Tags	--- Optional Construction	* Stream Type Break
⋯ Property Line	⋯ Optional Reconstruction	□ Stream Type
×× Private Property Line No Tags	⋯ Required Construction	→ Stream
⋯ Self-Leveling Equipment or Cable	⋯ Required Reconstruction	◆ Monumented Corner
⋯ Ground	⋯ Optional Maintenance	▒ Leave Tree Area
⋯ Cable Only	⋯ Required Maintenance	▒ RMZ/WMZ
⊕ Cable Landing	🏠 Residence	⏴ Wetland
	⋯ Foothills Trail	Ⓟ Bald

# TIMBER SALE MAP

**SALE NAME:** LITTLE FOOT  
**AGREEMENT #:** 93650  
**TOWNSHIP(S):** T30R06W  
**TRUST(S):** State Forest Transfer(1), Common School and Indemnity(3)

**REGION:** Olympic Region  
**COUNTY(S):** CLALLAM  
**ELEVATION RGE:** 1349-2408

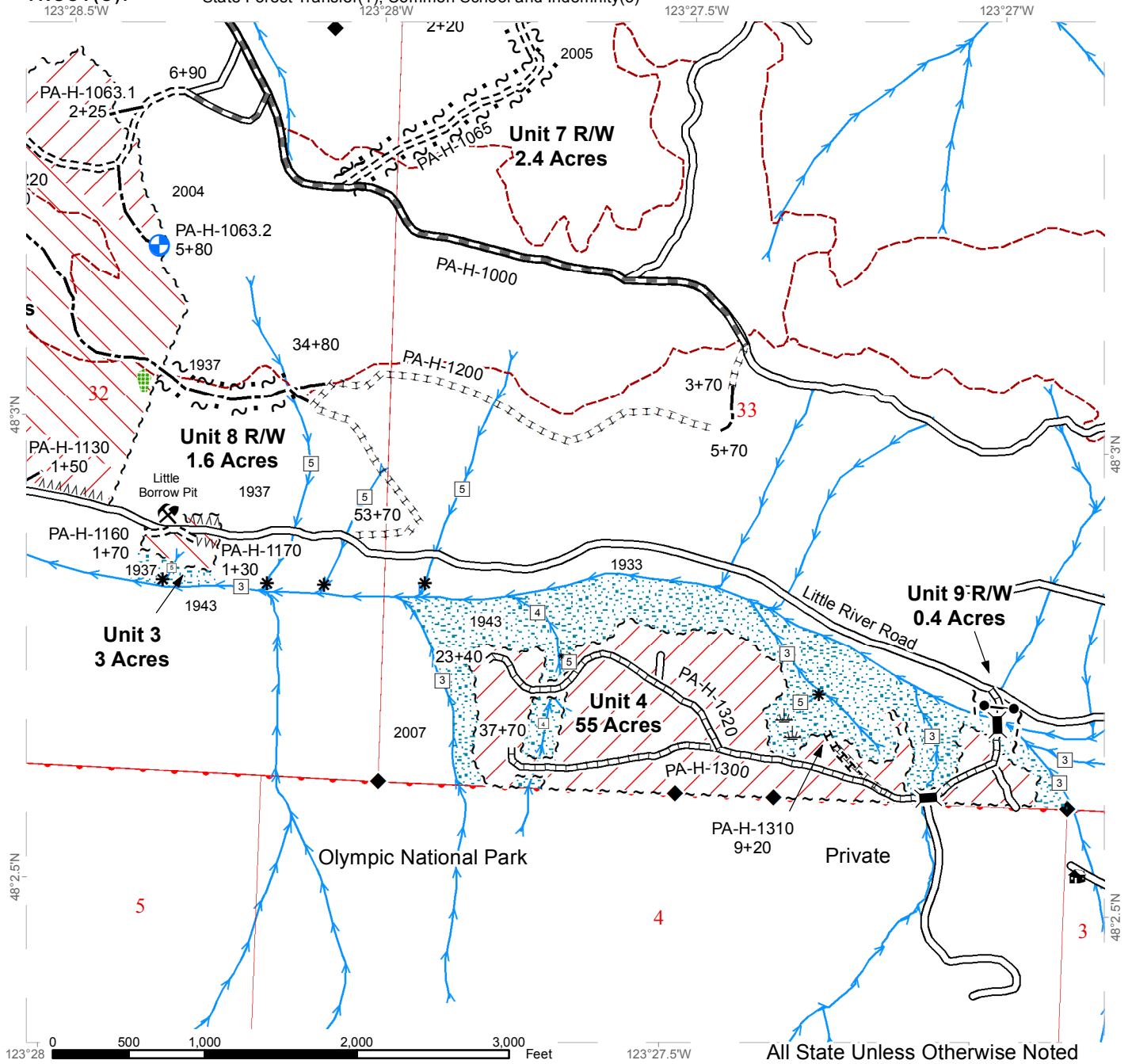


--- Sale Boundary Tags	⚡ Pit	⋯ Hazard Abatement
⋯ Right of Way Tags	--- Optional Construction	* Stream Type Break
⋯ Property Line	⋯ Optional Reconstruction	□ Stream Type
✕ Private Property Line No Tags	⋯ Required Construction	➡ Stream
⋯ Self-Leveling Equipment or Cable	⋯ Required Reconstruction	◆ Monumented Corner
⋯ Ground	⋯ Optional Maintenance	▒ Leave Tree Area
⋯ Cable Only	⋯ Required Maintenance	⋯ RMZ/WMZ
⊕ Cable Landing	🏠 Residence	⋯ Wetland
	⋯ Foothills Trail	Ⓟ Bald

# TIMBER SALE MAP

**SALE NAME:** LITTLE FOOT  
**AGREEMENT #:** 93650  
**TOWNSHIP(S):** T30R06W  
**TRUST(S):** State Forest Transfer(1), Common School and Indemnity(3)

**REGION:** Olympic Region  
**COUNTY(S):** CLALLAM  
**ELEVATION RGE:** 1349-2408



All State Unless Otherwise Noted

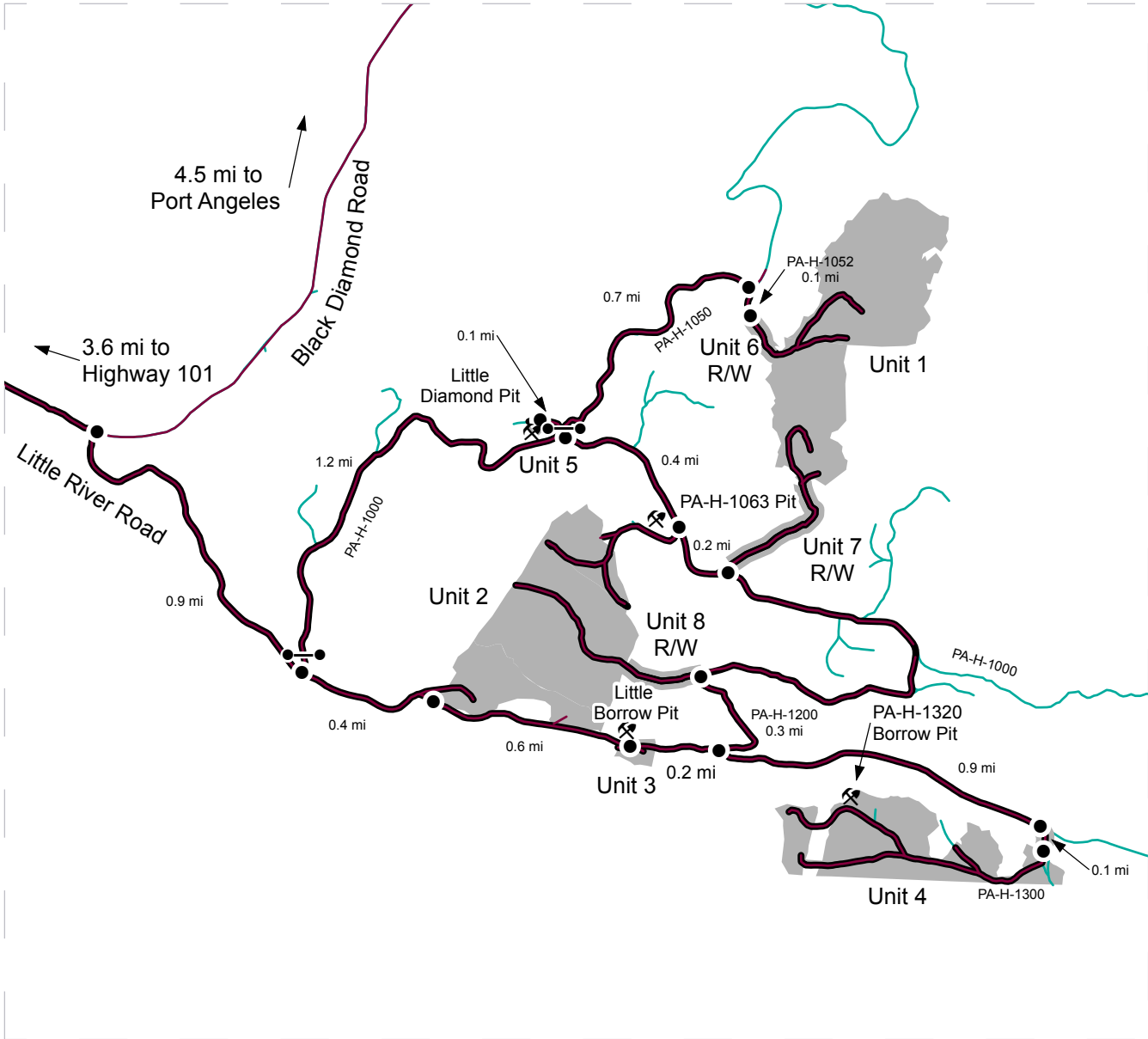
~ ~ ~ ~ Sale Boundary Tags	⛏ Pit	AAAAAA Hazard Abatement
~ ~ ~ ~ Right of Way Tags	--- Optional Construction	* Stream Type Break
• • • • Property Line	± ± ± ± Optional Reconstruction	□ Stream Type
X X X Private Property Line No Tags	==== Required Construction	→ Stream
\\ \\ Self-Leveling Equipment or Cable	==== Required Reconstruction	◆ Monumented Corner
Ground	= Δ = Optional Maintenance	▒ Leave Tree Area
Cable Only	== Required Maintenance	▒ RMZ/WMZ
⊕ Cable Landing	🏠 Residence	⬇ Wetland
	--- Foothills Trail	⚙ Bridge To Be Installed



# DRIVING MAP

**SALE NAME:** LITTLE FOOT  
**AGREEMENT#:** 93650  
**TOWNSHIP(S):** T30R06W  
**TRUST(S):** State Forest Transfer(1), Common School and Indemnity(3)

**REGION:** Olympic Region  
**COUNTY(S):** CLALLAM  
**ELEVATION RGE:** 1349-2408



	Timber Sale Unit
	Haul Route
	Right-of-Way
	Other Route
	Distance Indicator
	Rock Pit
	Gate

**DRIVING DIRECTIONS:**

From Port Angeles drive on Highway 101 to milepost 239.6. Turn left (south) on Elwha Hot Springs Road. Drive 0.2 miles and turn left (east) on Little River Road. Drive 3.4 miles and turn right (south) at the junction with Black Diamond Road and continue 0.9 miles on Little River road to the PA-H-1000 road.

Units 5 and Little Diamond Pit: Turn left (north) on the PA-H-1000, proceed through the gate (AA-1 key). Drive 1.2 miles and turn left (north) at the PA-H-1050 Road. Proceed thru the gate (AA-1 key), immediately turn left (west) on the PA-H-1051 and drive 0.1 miles to Unit 5 and the Little Diamond Pit.

Units 1 and 6 R/W: From the gate, proceed on the PA-H-1050 for 0.7 miles to the PA-H-1052 road. Turn right (south) and travel 0.2 miles to Unit 6 R/W. Walk 650 feet to Unit 1 along the right-of-way.

Unit 7 R/W and PA-H-1063 Pit: From the PA-H-1000/PA-H-1050 junction, drive 0.4 miles on the PA-H-1000 road to the PA-H-1063 road and the PA-H-1063 Pit. From the PA-H-1000/PA-H-1063 junction, drive 0.2 miles. Unit 7 R/W is on the north side of the road.

Units 2, 3 and 4, Little Borrow Pit, and PA-H-1320 Pit: From the PA-H-1000/Little River Road junction, drive 0.4 miles east to Unit 2. Continue east another 0.6 miles to Unit 3 and the Little Borrow Pit. From Unit 3 drive east 10.2 miles to the PA-H-1200. Walk 1,630 feet on the PA-H-1200 to Unit 8 R/W. From the Little River Road/PA-H-1200 junction, drive 0.9 miles east to the PA-H-1300 road. Walk 350 feet on the PA-H-1300 to Unit 4. Walk another 2,850 feet on the PA-H-1300/1320 to the PA-H-1320 Pit. Do not block the PA-H-1300.





TIMBER NOTICE OF SALE

SALE NAME: WAY OUT

AGREEMENT NO: 30-094685

AUCTION: August 31, 2017 starting at 10:00 a.m., COUNTY: Pacific Pacific Cascade Region Office, Castle Rock, WA

SALE LOCATION: Sale located approximately 6 miles southwest of Menlo

PRODUCTS SOLD AND SALE AREA: All timber, except trees marked with blue paint, and all down timber greater than 36 inches in diameter, bound by the following: white "Timber Sale Boundary" tags, reprod, the W-Line, and pink flagging along private property lines in Unit 1; white "Timber Sale Boundary" tags, reprod, and pink flagging along private property lines in Units 2 and 3, on part(s) of Sections 1 all in Township 12 North, Range 9 West, Sections 36 all in Township 13 North, Range 9 West, W.M., containing 118 acres, more or less.

CERTIFICATION: This sale is certified under the Sustainable Forestry Initiative® program Standard (cert no: BV-SFIS-US09000572)

ESTIMATED SALE VOLUMES AND QUALITY:

Table with columns: Species, Avg DBH, Ring Count, Total MBF, and MBF by Grade (1P, 2P, 3P, SM, 1S, 2S, 3S, 4S, UT). Rows include Hemlock, Douglas fir, Silver fir, Red alder, Spruce, Red cedar, and Sale Total.

MINIMUM BID: \$678,000.00 BID METHOD: Sealed Bids

PERFORMANCE SECURITY: \$100,000.00 SALE TYPE: Lump Sum

EXPIRATION DATE: October 31, 2019 ALLOCATION: Export Restricted

BID DEPOSIT: \$67,800.00 or Bid Bond. Said deposit shall constitute an opening bid at the appraised price.

HARVEST METHOD: Cable and Shovel. Harvesting activities are estimated to be 50% uphill cable harvesting and 50% ground-based harvesting. Ground-based harvesting equipment shall be restricted to slopes of 45% and less, and during dry soil conditions. See clauses H-140 and H-141 for further harvest requirements.

ROADS: 11.49 stations of required construction. 5.00 stations of required reconstruction. 9.44 stations of optional construction. 42.60 stations of optional reconstruction. 629.65 stations of required pre-haul maintenance. 36.25 stations of light abandonment. Rock for construction, reconstruction, and pre-haul maintenance under this contract may be obtained at no cost to the Purchaser from the following rock sources; SELECT PIT RUN, 3 INCH MINUS CRUSHED from the W-Line Pit and the B-1321 Stockpile located in Section 20, Township 13 North, Range 08 West, W.M. Road construction will not be



## TIMBER NOTICE OF SALE

permitted from October 1 to April 30 unless authorized in writing by the Contract Administrator. This includes: all road work, including Pre-haul Maintenance. Road construction equipment is not allowed to operate on weekends or state recognized holidays, unless authorized in writing by the Contract Administrator for culvert removal on the W-500 at sta. 86+10.

### **ACREAGE DETERMINATION**

**CRUISE METHOD:** The sale acres were determined by GPS delineation. Cruise was completed using variable plot cruise methods.

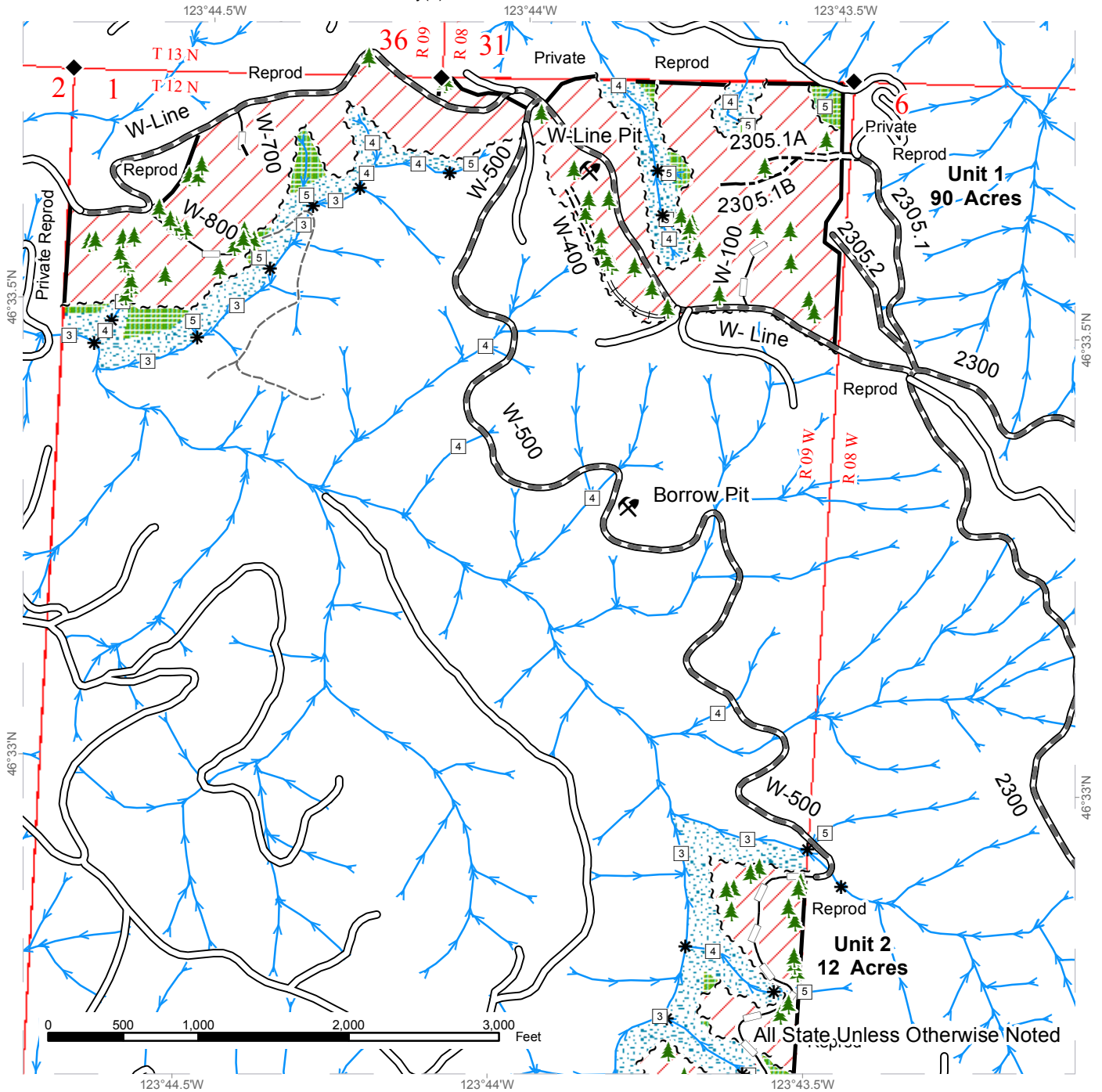
**FEES:** Purchaser shall pay the fee of \$7,892.00 for a Road Use Permit to FIA Timber Growth and Value Washington LLC. The RUP is between FIA Timber Growth and Value Washington LLC and the State. The fee is due 30 days after the Grantee enters into a contract for the Way Out Timber Sale. \$66,687.00 is due on day of sale. \$9.00 per MBF is due upon removal. These are in addition to the bid price.

**SPECIAL REMARKS:** This sale has approximately 17 MBF of high quality 2 saw DF, 35 MBF of high quality 3 saw DF, 260 MBF of high quality 2 saw WH, and 559 MBF of high quality 3 saw WH, 15 MBF of high quality SF and 6 MBF of high quality SS. The gate on the 2300 at Station 0+00 shall remain closed and locked except for passing vehicles. PCP 1-1 gate keys may be obtained from the Pacific Cascade Region office. Purchaser shall abandon the W-500 road from station 79+50 to 115+17 by September 30, 2019, see the road plan for details.

# TIMBER SALE MAP

**SALE NAME:** WAY OUT  
**AGREEMENT #:** 30-094685  
**TOWNSHIP(S):** T12R09W T13R09W  
**TRUST(S):** Common School and Indemnity(3)

**REGION:** Pacific Cascade Region  
**COUNTY(S):** PACIFIC  
**ELEVATION RGE:** 609-1548

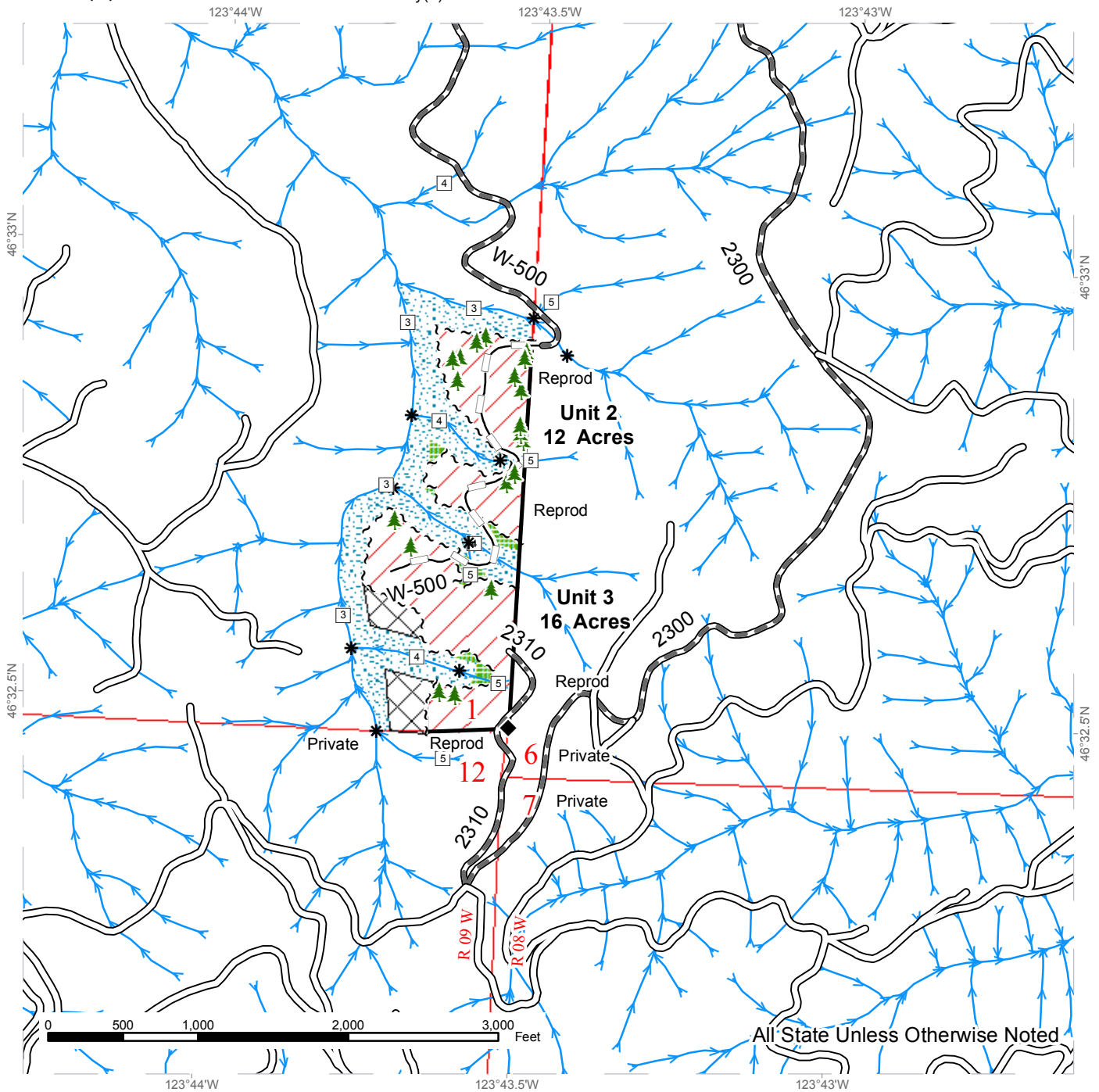


Variable Retention Harvest	Existing Roads	Streams
Leave Tree Area	Required Pre-Haul Maintenance	Stream Type
Riparian Mgt Zone	Required Construction	Stream Type Break
Sale Boundary Tags	Required Reconstruction	Leave Trees
Reprod	Optional Construction	Wetland
	Optional Reconstruction	Existing Rock Pit
	Old Grades/Trails	Monumented Corners

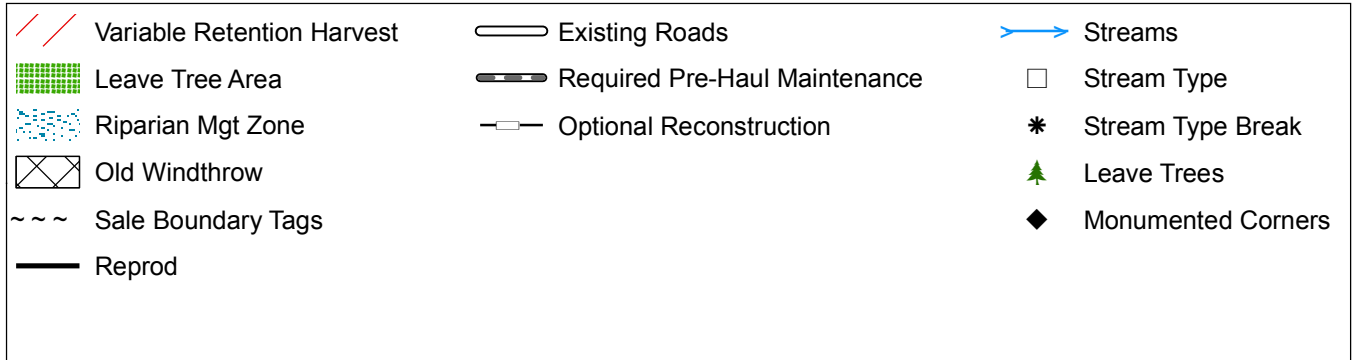
# TIMBER SALE MAP

**SALE NAME:** WAY OUT  
**AGREEMENT #:** 30-094685  
**TOWNSHIP(S):** T12R09W T13R09W  
**TRUST(S):** Common School and Indemnity(3)

**REGION:** Pacific Cascade Region  
**COUNTY(S):** PACIFIC  
**ELEVATION RGE:** 609-1548



All State Unless Otherwise Noted

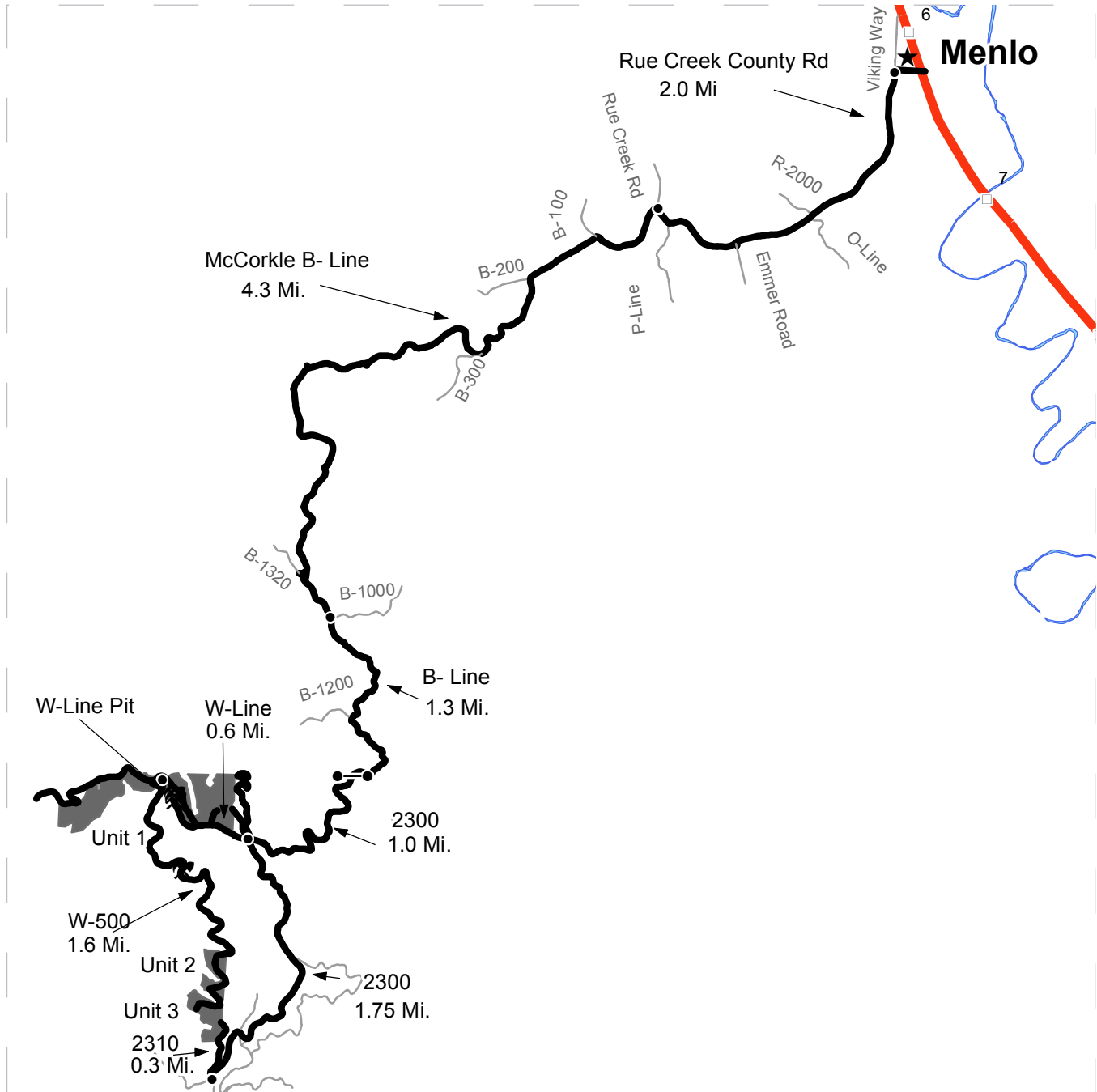




# DRIVING MAP

**SALE NAME:** WAY OUT  
**AGREEMENT#:** 30-094685  
**TOWNSHIP(S):** T12R09W T13R09W  
**TRUST(S):** Common School and Indemnity(3)

**REGION:** Pacific Cascade Region  
**COUNTY(S):** PACIFIC  
**ELEVATION RGE:** 609-1548



- Timber Sale Unit
- Highways
- Haul Route
- Other Route
- Milepost Markers
- Gate (PCP 1-1)
- X Existing Rock Pit

**DRIVING DIRECTIONS:**

From State Route 6: Turn west into town of Menlo onto Rue Creek County Road. Continue southwest for 2 miles.

Turn south (left) onto McCorkle B-line. Continue 5.6 miles to Gate. Continue 1 mile after gate on the 2300 to 5 way junction.

From 5 way junction to Unit 1: Turn west (right) on to W-Line to timber. Unit is on right (north).

From 5 way junction to Unit 2 and 3: Continue on 2300 1.75 miles to 2310 Road. Take 2310 Road to access top of Unit 2 and 3.







TIMBER NOTICE OF SALE

SALE NAME: FRIAR TUCK

AGREEMENT NO: 30-095063

AUCTION: August 30, 2017 starting at 10:00 a.m., COUNTY: Skagit Northwest Region Office, Sedro Woolley, WA

SALE LOCATION: Sale located approximately 4 miles east of Alger, WA.

PRODUCTS SOLD AND SALE AREA:

All timber bounded by white timber sale boundary tags and the AL-ML, except cedar salvage (cedar snags, preexisting dead and down cedar trees and cedar logs), trees marked with blue paint on the bole and root collar, and forest products tagged out by yellow leave tree area tags in Unit #1 (collectively labeled Units 1a and 1b).

All timber bounded by orange right of way tags, except that title to the timber within the right of way tags is not conveyed to the Purchaser unless the road segment is actually constructed.

The above described products on part(s) of Sections 16 and 21 all in Township 36 North, Range 4 East, W.M., containing 99 acres, more or less.

CERTIFICATION: This sale is certified under the Sustainable Forestry Initiative® program Standard (cert no: BV-SFIS-US09000572)

ESTIMATED SALE VOLUMES AND QUALITY:

Table with columns: Species, Avg DBH, Ring Count, Total MBF, and MBF by Grade (1P, 2P, 3P, SM, 1S, 2S, 3S, 4S, UT). Rows include Douglas fir, Red alder, and Sale Total.

MINIMUM BID: \$791,000.00 BID METHOD: Sealed Bids

PERFORMANCE SECURITY: \$100,000.00 SALE TYPE: Lump Sum

EXPIRATION DATE: March 31, 2019 ALLOCATION: Export Restricted

BID DEPOSIT: \$79,100.00 or Bid Bond. Said deposit shall constitute an opening bid at the appraised price.

HARVEST METHOD: Cable; cable, shovel or tracked skidder on sustained slopes 40% or less; a self-leveling and/or tethered feller-buncher may operate on sustained slopes up to 60%, with prior approval from the Contract Administrator. Falling and Yarding will not be permitted from November 1 to March 31 unless authorized in writing by the Contract Administrator (THIS PERTAINS TO GROUND-BASED EQUIPMENT ONLY) to reduce soil damage and erosion.

ROADS: 61.37 stations of optional construction. 0.50 stations of required/optional pre-haul maintenance.



## TIMBER NOTICE OF SALE

Rock may be obtained from the following source(s) on State land at no charge to the Purchaser: Alger Pit at station 216+66 of the AL-ML Road.

Development of an existing rock source will involve drilling, shooting, and processing rock to generate riprap and 3-inch-minus ballast.

An estimated total quantity of rock needed for this proposal: 196 cubic yards of riprap and 5,875 cubic yards of ballast rock.

Road work and the hauling of rock will not be permitted from November 1 to March 31 unless authorized in writing by the Contract Administrator to reduce soil damage and siltation. The hauling of forest products will not be permitted from November 1 to March 31 unless authorized in writing by the Contract Administrator to reduce soil damage and siltation.

### **ACREAGE DETERMINATION**

**CRUISE METHOD:** Acres determined by GPS traverse. Cruise was conducted via variable plot sample type. See Cruise Narrative for further details. Shapefiles of units are available upon request.

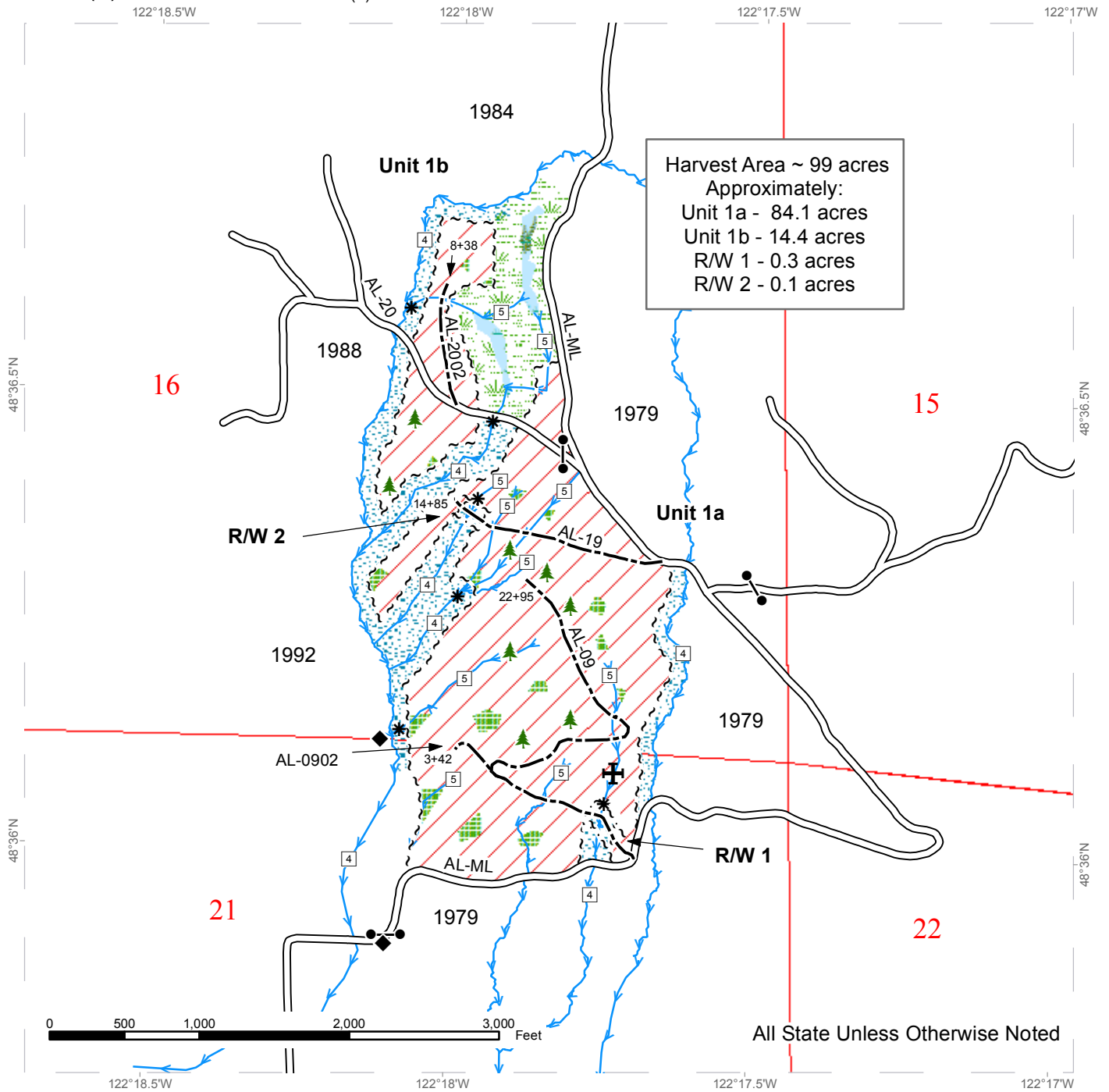
**FEES:** \$45,866.00 is due on day of sale. \$9.00 per MBF is due upon removal. These are in addition to the bid price.

**SPECIAL REMARKS:** 1. A portion of the road work is on abandoned grades.

# TIMBER SALE MAP

**SALE NAME:** FRIAR TUCK  
**AGREEMENT #:** 30-095063  
**TOWNSHIP(S):** T36R04E  
**TRUST(S):** State Forest Transfer(1)

**REGION:** Northwest Region  
**COUNTY(S):** SKAGIT  
**ELEVATION RGE:** 300-1400

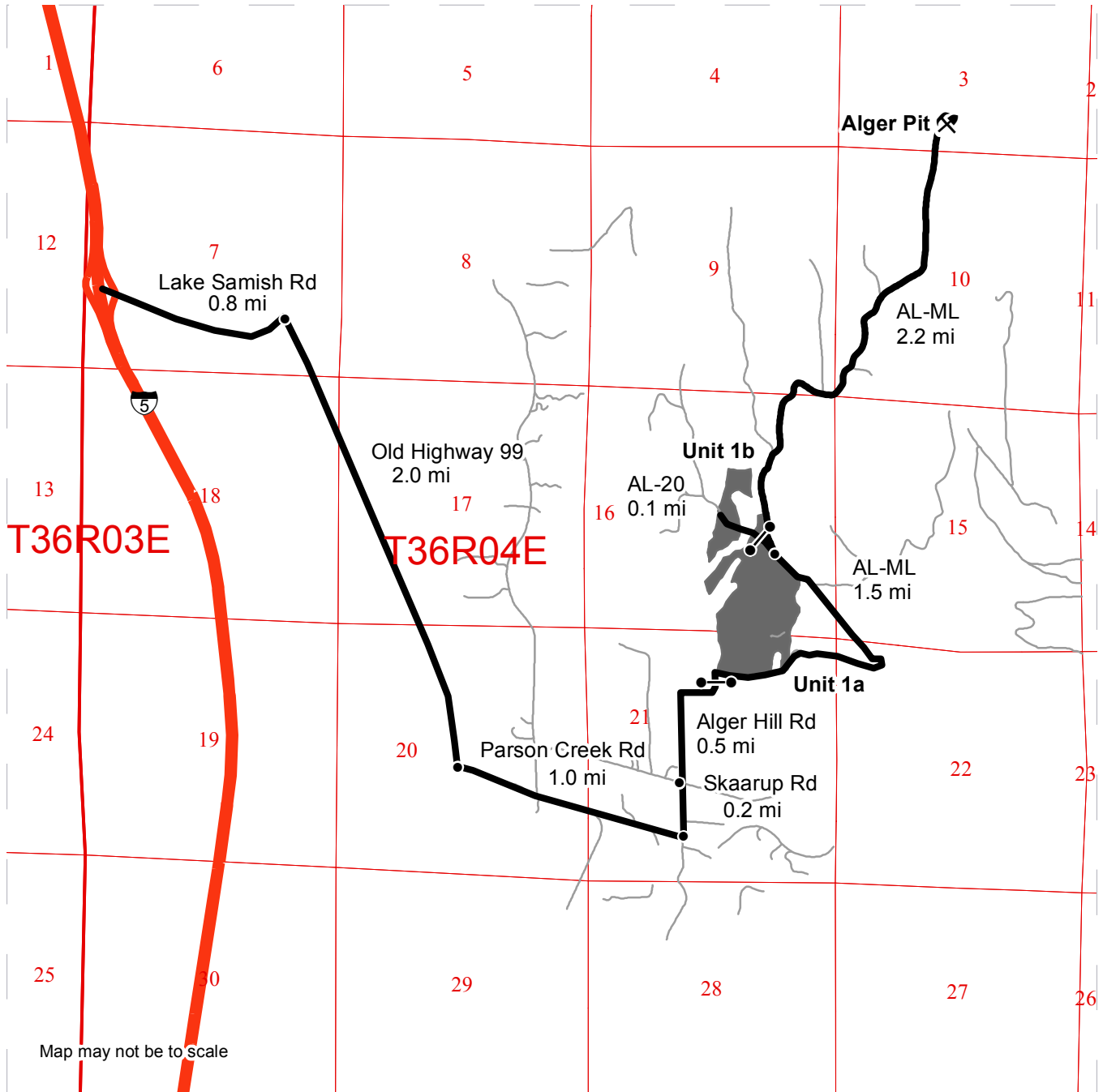


	Variable Retention Harvest		Existing Roads		Streams
	Leave Tree Area		Optional Construction		Stream Type
	Forested Wetland		Gates		Stream Type Break
	Riparian Mgt Zone		Sale Boundary Tags		Leave Tree Area
	Wetland Mgt Zone		Right of Way Tags		Exclusion Area
					Survey Monument

# DRIVING MAP

**SALE NAME:** FRIAR TUCK  
**AGREEMENT#:** 30-095063  
**TOWNSHIP(S):** T36R04E  
**TRUST(S):** State Forest Transfer(1)

**REGION:** Northwest Region  
**COUNTY(S):** SKAGIT  
**ELEVATION RGE:** 300-1400



Map may not be to scale

	Timber Sale Unit
	Haul Route
	Other Road
	Distance Indicator
	Gate
	Rock Pit

**DRIVING DIRECTIONS:**

From I-5, take exit 241 and travel east on Lake Samish Rd for 0.8 miles. Turn right onto Old Hwy 99N and drive 2 miles. Turn left on Parson Creek Rd and drive 1 mile. Turn left onto Skaarup Rd and travel 0.2 miles. Continue straight onto the Alger Hill Road. After 0.5 miles, road becomes the AL-ML, and unit 1a is on the left. Continue 1.5 miles on the AL-ML and turn left on the AL-20. Drive 0.1 miles on the AL-20 to enter unit 1b. From the junction with the AL-20, continue on the AL-ML for 2.2 miles to reach the Alger Pit





TIMBER NOTICE OF SALE

SALE NAME: CARROL FLATS FIT

AGREEMENT NO: 30-95243 - 30-95247

AUCTION: August 31, 2017 starting at 10:00 a.m. Pacific Cascade Region Office, Castle Rock, WA

COUNTY: Yakima

SALE LOCATION: Sale located approximately 18 miles Northwest of Naches

PRODUCTS SOLD

AND SALE AREA: All timber except leave trees as described in Schedule A, bounded by the following: pink flagging, white "Timber Sale Boundary" tags, and orange flashers in unit 1; All timber bounded by orange "Right Of Way" tags, and orange flashers located in Right of Way in unit 2 meeting the specifications described below; on parts of Sections 3, 10, 14, 15, 23, and 24 all in Township 15 North, Range 15 East W.M., containing 893 acres, more or less.

MINIMUM BID AND ESTIMATED LOG VOLUMES:

Table with 10 columns: Agreement #, Sort #, Species and Sort Specifications, Average Log Length, Estimated Volume (Mbf, Tons), Tons Per MBF, Minimum Bid Delivered Prices (\$/mbf, \$/Ton), Total Appraised Value, Bid Deposit. Rows include agreement numbers 30-095243 through 30-095247.

Totals: 2670 20362 \$1,278,710.00

CERTIFICATION: This sale is certified under the Sustainable Forestry Initiative® program Standard (cert no: BV-SFIS-US09000572)

BID METHOD: Sealed Bids UNIT OF MEASURE: MBF Scale/Tonnage Scale

EXPIRATION DATE: February 28, 2018 ALLOCATION: Export Restricted

PAYMENT

SECURITY: To be determined by the State as described in Clause P-045.2 of the Purchaser's Contract.

BIDDING

PROCEDURES: A separate sealed bid and envelope must be submitted for each log sort. Prospective Purchasers may bid on any or all log sorts. On the day of sale the Purchaser must bring their bid deposit up to 10% of their total bid price. Complete bidding procedures and auction information may be obtained from the Southeast Region Office in Ellensburg WA. Phone number (509)925-8510.

TIMBER EXCISE

TAX: Purchaser must pay the forest excise taxes associated with the log sorts delivered to them. The tax rate for this sale is 4.2 %. Taxable Stumpage = Total Delivered Value – (Harvest



## TIMBER NOTICE OF SALE

Cost + Estimated Haul Cost + ARRF). For more information contact the Department of Revenue, Forest Tax Section at 1-800-548-8829.

Use the following rates for estimating taxable stumpage:

Harvest Cost = \$0.00 per MBF for sorts 1, 3 and 4 and \$20.00 per Ton for sort 5.

Hauling Services Payment Rate per Ton  
= (Base Rate + Mileage Rate) x (Contractor's hauling bid factor)

Base Rate = \$2.35 per ton

Mileage Rate =  $(\$0.16 \times C \text{ miles}) + (\$0.11 \times A \text{ miles}) \times \text{Fuel Index Factor}$

ARRF does not apply.

Note: To calculate ARRF rates per ton use the tons\mbf conversion factor in the table above.

**CONFIRMATION:** Each sort is subject to confirmation following auction. Sorts will not be confirmed until at least 10 days after auction. Final contract award is contingent upon the State's haul cost analysis. Actual haul route may vary and is subject to change at the State's discretion.

**SPECIAL REMARKS:** The successful Purchaser(s) will be required to purchase logs from the sale area upon delivery to their location specified in the bid submitted. Logs will be delivered to the Purchaser's delivery location by the State's contract harvester. Purchaser is responsible for weighing and scaling costs. All tonnage loads will be weighed and all mbf loads will be scaled at State approved locations. The State reserves the right to determine where logs are authorized to be scaled and weighed.

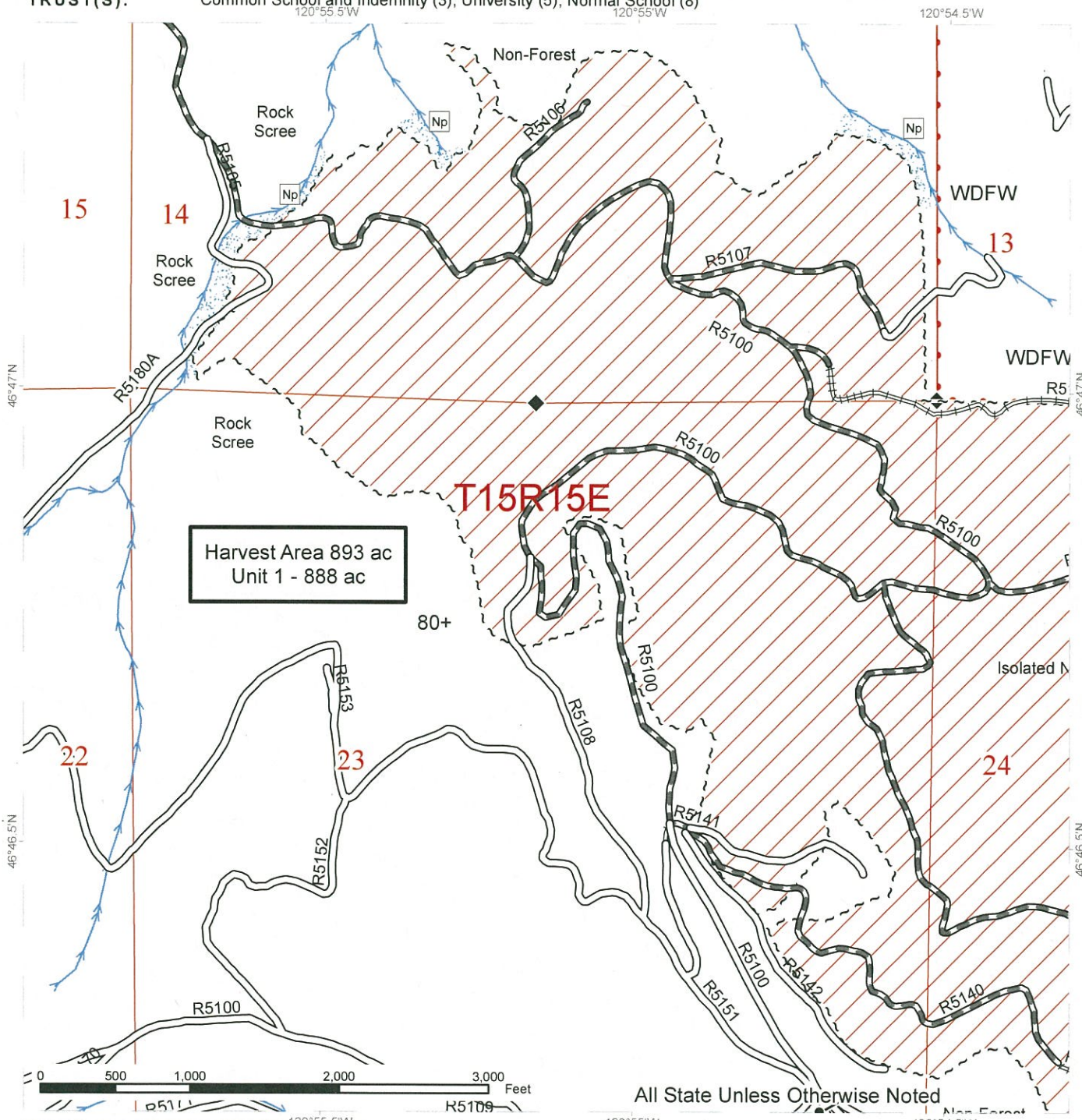
For more information regarding this log sort sale visit our web site:  
<http://www.dnr.wa.gov/programs-and-services/product-sales-and-leasing/timber-sales/timber-auction-packets>. If you have questions call Chris Brandon at the Southeast Region Office at (509)899-4825.



# Timber Sale Map

**SALE NAME #:** Carrol Flats FIT  
**AGREEMENT #:** 30-095242  
**TOWNSHIP(S):** T15R15E  
**TRUST(S):** Common School and Indemnity (3), University (5), Normal School (8)

**REGION:** Southeast Region  
**COUNTY(S):** Yakima  
**ELEVATION RANGE:** 1800-4600



All State Unless Otherwise Noted

## Legend

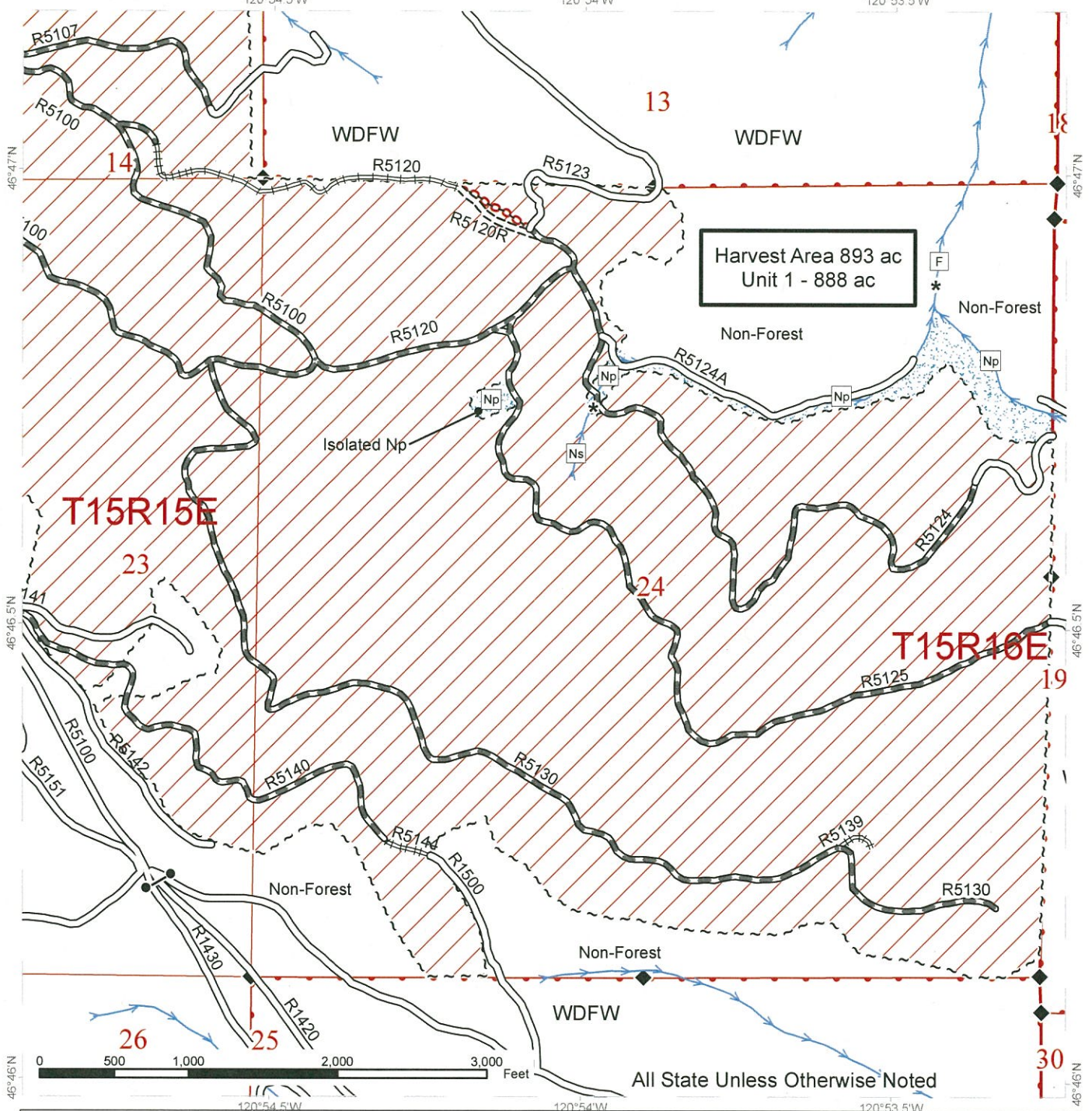
- |                              |                    |                               |
|------------------------------|--------------------|-------------------------------|
| Sale Area                    | Streams            | Required Pre-Haul Maintenance |
| Sale Boundary Tags           | RMZ                | Existing Roads                |
| Public Land Survey Townships | Gate               | Required Reconstruction       |
| Public Land Survey Sections  | Monumented Corners |                               |
| DNR Managed Lands            |                    |                               |



# Timber Sale Map

**SALE NAME #:** Carrol Flats FIT  
**AGREEMENT #:** 30-095242  
**TOWNSHIP(S):** T15R15E  
**TRUST(S):** Common School and Indemnity (3), University (5), Normal School (8)

**REGION:** Southeast Region  
**COUNTY(S):** Yakima  
**ELEVATION RANGE:** 1800-4600



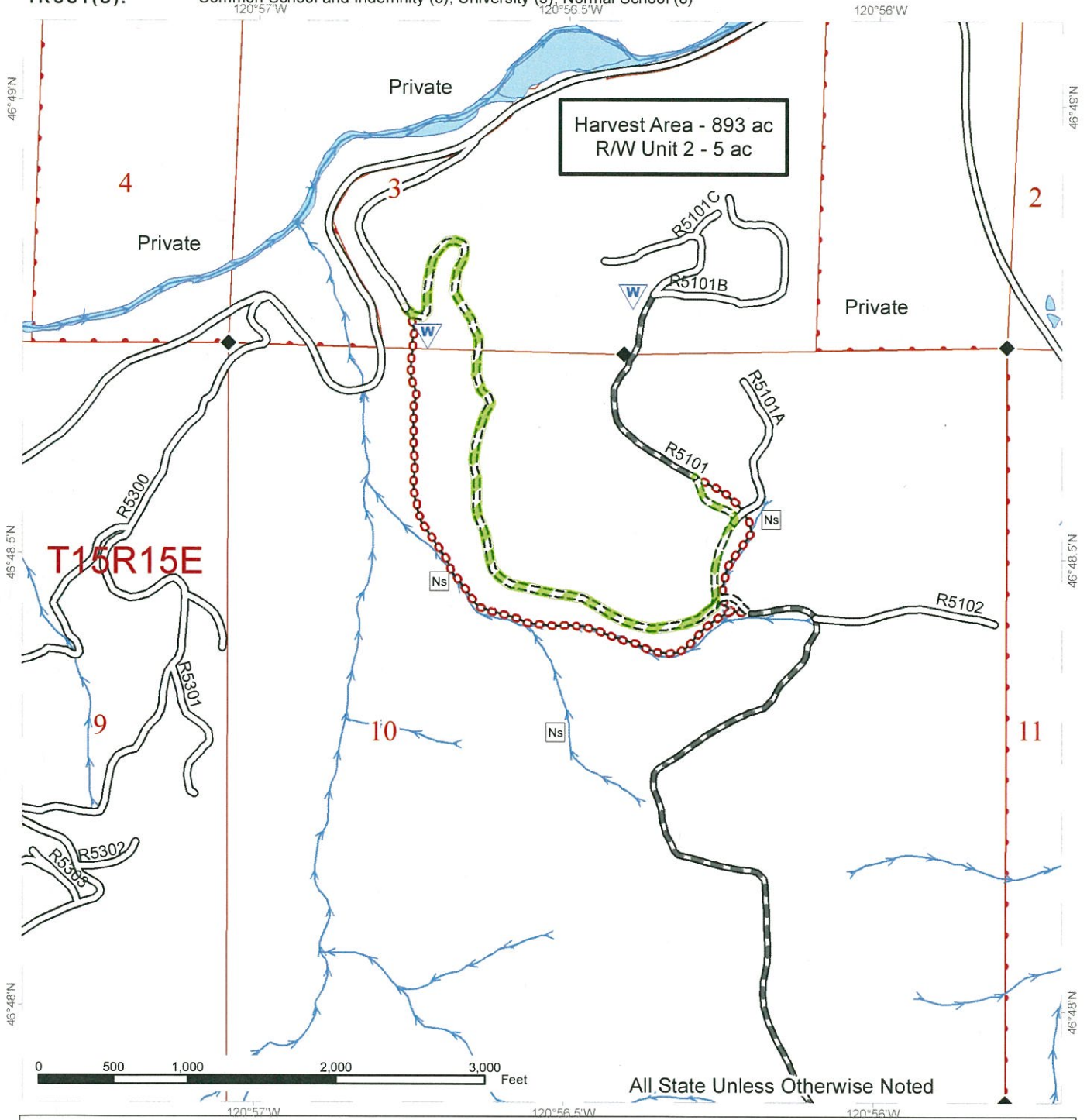
**Legend**

Sale Area	Streams	Required Pre-Haul Maintenance
Sale Boundary Tags	RMZ	Existing Roads
Public Land Survey Townships	Gate	Required Construction
Public Land Survey Sections	Monumented Corners	Required Reconstruction
DNR Managed Lands		Required Abandonment

# Timber Sale Map

**SALE NAME #:** Carrol Flats FIT  
**AGREEMENT #:** 30-095242  
**TOWNSHIP(S):** T15R15E  
**TRUST(S):** Common School and Indemnity (3), University (5), Normal School (8)

**REGION:** Southeast Region  
**COUNTY(S):** Yakima  
**ELEVATION RANGE:** 1800-4600



## Legend

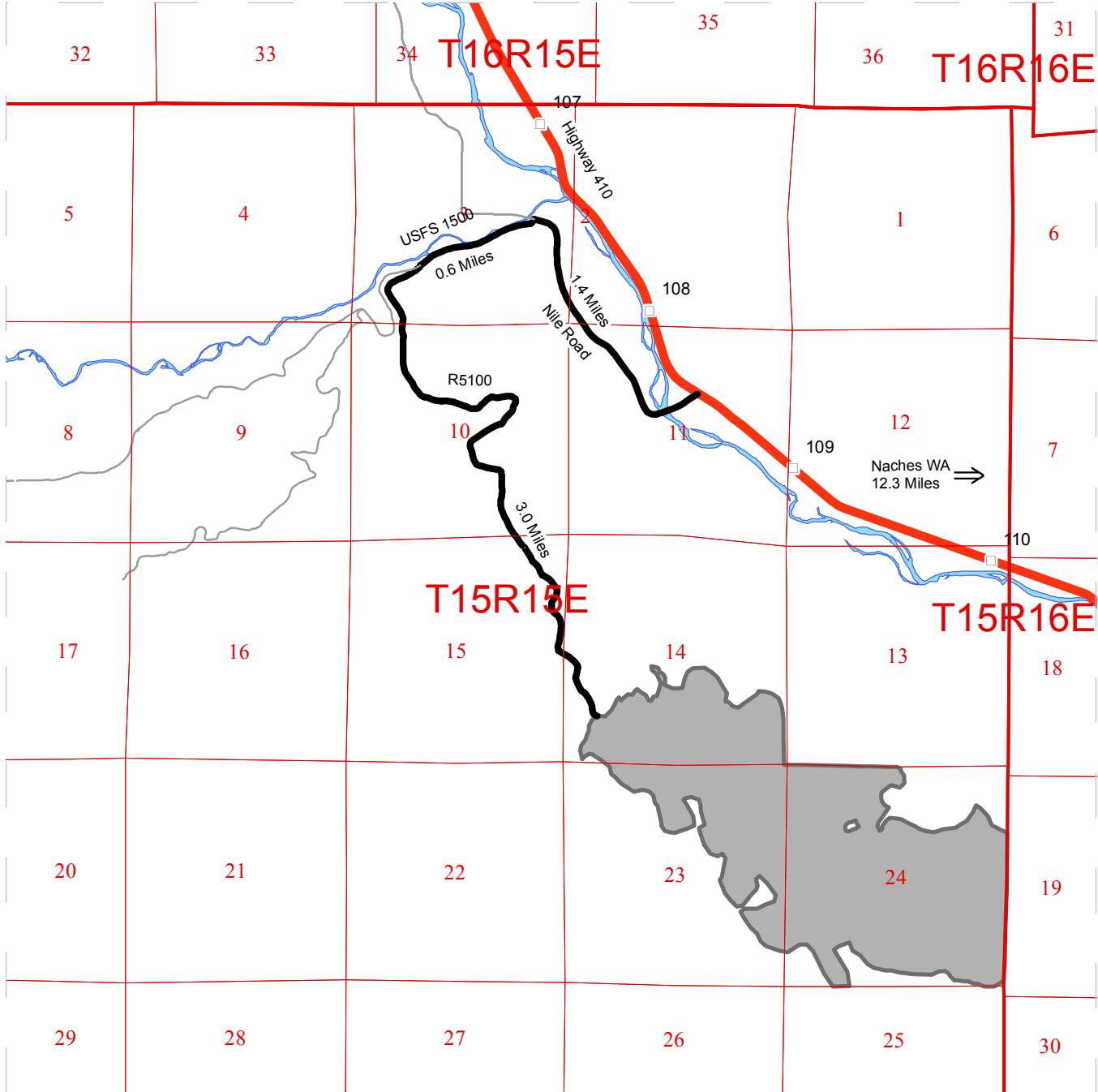
- |                              |                    |                               |
|------------------------------|--------------------|-------------------------------|
| Right-of-Way                 | Streams            | Required Pre-Haul Maintenance |
| Public Land Survey Townships | Waste Area         | Existing Roads                |
| Public Land Survey Sections  | Monumented Corners | Required Construction         |
| DNR Managed Lands            |                    | Required Abandonment          |



# DRIVING MAP

**SALE NAME:** Carrol Flats FIT  
**AGREEMENT#:** 30-095242  
**TOWNSHIP(S):** T15N R15E  
**TRUST(S):** Common School and Indemnity(3), University(5), Normal School(8)


**REGION:** Southeast Region  
**COUNTY(S):** Yakima  
**ELEVATION RGE:** 2000-4600

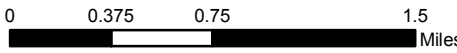


- Highways
- Haul Route
- Other Route
- Public Land Survey Sections
- Timber Sale Unit
- Milepost Markers

Driving Directions:

From Naches WA, follow Highway 12 west for 4.4 miles to junction with Highway 410. Follow Highway 410 for 7.9 miles to Nile Road. Turn left onto Nile Road and follow for 1.4 miles to USFS 1500 (Bethel Ridge) Road. Follow USFS 1500 for 0.6 miles. Turn left on R5100 (Mely Canyon) Road for 3.0 miles to sale boundary.





**State of Washington  
Department of Natural Resources**

**SEALED BID FORM**

Sale Name \_\_\_\_\_ Agreement Number \_\_\_\_\_

\_\_\_\_\_ hereby submits the following bid for timber.  
(Print full, legal company name)

\_\_\_\_\_  
(Street address, City, State, Zip Code)

\_\_\_\_\_  
(Phone Number)

---

---

**Lump Sum Bid** (Not Including Fees)      \$ \_\_\_\_\_ **For Total Sale**

**Weight Scale Sale Bid** (Not Including Fees)      \$ \_\_\_\_\_ / **Ton**

**Scribner Scale Sale Bid** (Not Including Fees)      \$ \_\_\_\_\_ / **MBF For Biddable Species**

---

---

**BID DEPOSIT**

**Bid Deposit Amount:** \$ \_\_\_\_\_

**Bid Deposit Type:**

- Cash, certified check, cashiers check, or money order  
 Per Sale Bid Bond  
 Statewide Bid Bond, Number \_\_\_\_\_

---

---

**Within 30 days of confirmation date** the successful bidder agrees to furnish Performance Security acceptable to the State in the amount specified on the Notice of Sale. Performance Security must guarantee performance of all provisions of the contract and payment of any damages caused by operations under the contract or resulting from the successful bidders noncompliance with any rule or law.

Bidder's Warranty and Bid Signature

*By signing and submitting this bid as an offer to purchase forest products from the State, the Bidder hereby warrants to the State that they have had an opportunity to fully inspect the sale area and the forest products being sold. Bidder further warrants to the State that they enter this bid based upon their own judgments of the value of the forest products, formed after their own examination and inspection of both the timber sale area and the forest products being sold. Bidder also warrants to the State that they enter this bid without any reliance upon the volume estimates, acreage, appraisals, pre-bid documentation, or any other representation by the Washington State Department of Natural Resources.*

\_\_\_\_\_ Date \_\_\_\_\_  
(Signature of Authorized Representative submitting this bid)

\_\_\_\_\_  
(Print **name and title** of Authorized Representative submitting this bid)

**Note: all sales are subject to confirmation by the Commissioner of Public Lands (Refer 79.15.120)**

## Instructions For Completing Sealed Bid Form

---

*All bids submitted for the purchase of forest products being sold by the Washington State Department of Natural Resources must have an original signature on behalf of the person or entity submitting the bid, and must be on the form provided in this booklet or a photocopy thereof. The DNR will not accept bids that are not signed, and will not accept bids that are not on the current, approved bid form. All appropriate blanks on bid form must be completed including the bid bond number if the bidder is relying upon a bid bond for bid deposit.*

*For more specific information, contact the appropriate region office.*

---

### In-Person Bids

- A. Sealed bids must be in auction box before 10:00 a.m. on the day of auction at the location specified in the Timber Notice of Sale.
  - B. Sealed bids must be submitted in an envelope with the name of the sale, the bidder's name and the contract number clearly written on the outside of the envelope. The full legal name and business address of the bidder must be inserted where indicated on the form, and must be on the bid bond and timber sale contract. The bid form must be signed by an authorized representative. When a bidder has more than one person authorized to bid, documentation of those persons with signature authority for bidding must accompany the bid or be on file at the region office. Sealed bid envelopes are available at all region offices. One bid per envelope.
  - C. Sealed bid envelopes **must** contain a completed bid form and a bid deposit.
  - D. Sealed bid envelopes **may** contain a check for the Initial Deposit amount and a check for fees.
- 

### Mailed Bids

- A. Bids that are mailed are required to have printed on the outside: "DO NOT OPEN UNTIL SALE DATE. SEALED BID ENCLOSED". The sealed bid envelope(s) will be enclosed inside the mailed-in envelope. Mailed bids must be submitted in an envelope with the name of the sale, the bidder's name and the agreement number clearly written on the outside of the envelope. The full legal name and business address of the bidder must be inserted where indicated on the form, and must be the same on the bid bond and timber sale contract. The Sealed Bid Form must be signed by an authorized representative. When a bidder has more than one person authorized to bid, documentation of those persons with signature authority for bidding must accompany the bid or be on file at the region office. Mail-in envelopes are available at all region offices. One bid per mailed-in envelope.
  - B. Bids that are mailed will be accepted up to 4:30 p.m. the last business day before the auction by the region office in which the sale is located. Bidders assume the risk for the method of delivery. The DNR assumes no responsibility for any delays caused by any delivery service.
  - C. Sealed bid envelopes **must** contain a completed bid form and a bid deposit.
  - D. Sealed bid envelopes **may** contain a check for the Initial Deposit amount and a check for fees.
- 

### Initial Deposit:

**Lump Sum Sales** - Initial Deposit must equal 10% of the total bid submitted.  
(25% if the bidder is a defaulter as defined under WAC 332-140-300)

**Weight Scale Sales** - Initial Deposit must equal 10% of the bid per ton multiplied by the total sale estimated tonnage. (25% if the bidder is a defaulter as defined under WAC 332-140-300)

**Scribner MBF Scale Sales** - Initial Deposit must equal 10% of the bid per MBF multiplied by the total sale MBF. (25% if the bidder is a defaulter as defined under WAC 332-140-300)

**State of Washington  
Department of Natural resources**

**STATEWIDE BID BOND**

Bond Number \_\_\_\_\_

\_\_\_\_\_ of \_\_\_\_\_,  
(Principal's Name) (City, State)

hereinafter called PRINCIPAL, and \_\_\_\_\_ hereinafter called  
SURETY,

a corporation organized under the laws of the State of \_\_\_\_\_, and authorized to transact surety business in the State of Washington, as SURETY, are held and firmly bound jointly and severally to the State of Washington, Department of Natural Resources, hereinafter called the STATE, in the sum of \$150,000.00 Dollars, lawful money of the United States of America. The PRINCIPAL binds itself, its heirs, executors, administrators, successors, and assigns, and the SURETY binds itself, its successors, and assigns, all jointly and severally.

This bond shall be governed by the laws of the State of Washington. In the event of a lawsuit involving this bond, a venue shall be proper only in Thurston County Superior Court.

Signed, sealed and dated this \_\_\_\_\_ day of \_\_\_\_\_, \_\_\_\_\_ .  
(month) (year)

This statewide bid bond may be used for bidding between the following dates:

Starting:

Ending:

**It Is Hereby Understood and Agreed:**

If PRINCIPAL is an apparent high bidder, PRINCIPAL shall before 4:30 p.m ., on day of sale, pay to the STATE the amount of the initial deposit in the form of a certified check, cashier's check, bank draft, cash or money order, then this agreement shall be void for the sale on which the payment is made; otherwise, it will remain in force.

SURETY will make payment to the STATE within ten days after demand by the STATE if the PRINCIPAL shall fail to make timely payment as described above.

The SURETY may cancel this bond by sending a written notice to the STATE, not less than forty-five days before a cancellation date; liability shall terminate as to acts or omissions of the PRINCIPAL that occur after the cancellation date.

The PRINCIPAL and the SURETY executed this bond on the date first mentioned.

**Principal:** (Above named)

Signature: \_\_\_\_\_

Name: \_\_\_\_\_

Title: \_\_\_\_\_

Address: \_\_\_\_\_

City: \_\_\_\_\_  
State & Zip Code

**Surety:** (Above named)

Signature: \_\_\_\_\_

Name: \_\_\_\_\_

Title: \_\_\_\_\_

Address: \_\_\_\_\_

City: \_\_\_\_\_  
State & Zip Code

**Surety:** (Local Office of Authorized agent)

Signature: \_\_\_\_\_

Name: \_\_\_\_\_

Title: \_\_\_\_\_

Address: \_\_\_\_\_

City: \_\_\_\_\_  
State & Zip Code

Notary or Company Seal in Space Above



## **Instructions for Completing Timber Sale Statewide Bid Bond**

- A. This form is authorized for use as bid guaranty to qualify for bidding on Washington State Department of Natural Resources timber sales.
- B. The Statewide Bid Bond may be used as bid guaranty on more than one timber sale.
- C. The full legal name and business address of the PRINCIPAL must be inserted where indicated and must be the same as will appear on the bidding record and timber sale contract. The bond must be signed by an authorized person. Additionally, the name must be typed or printed below the signature and title must be shown.
- D. The full legal name and business address of the SURETY must be inserted where indicated. The bond must be signed by an authorized person. Additionally, the name must be typed or printed below the signature and the title must be shown.
- E. If the SURETY does not have a Washington State office or resident agent, but is authorized to transact surety business in the State of Washington as SURETY, it may leave this signature block blank.
- F. This form must be received by the Department of Natural Resources, Product Sales & Leasing Division, PO BOX 47016, Olympia, Washington, 98504-7016, ten days in advance of the auction.
- G. **The State reserves the right to reject *incomplete or incorrect* bid bond forms, making such forms unacceptable as bid guaranty.**



**State of Washington  
Department of Natural Resources**

**Timber Sale Per Sale Bid Bond**

Bond Number \_\_\_\_\_

\_\_\_\_\_ of \_\_\_\_\_, hereinafter called PRINCIPAL, and \_\_\_\_\_, hereinafter called SURETY, a corporation organized under the laws of the State of \_\_\_\_\_ and authorized to transact surety business in the State of Washington, as SURETY, are held and firmly bound jointly and severally to the State of Washington, Department of Natural Resources, hereinafter called the STATE, in the sum of \$ \_\_\_\_\_ Dollars, lawful money of the United States of America. The PRINCIPAL binds itself, its heirs, executors, administrators, successors, and assigns, and the SURETY binds itself, its successors, and assigns, all jointly and severally.

This bond shall be governed by the laws of the State of Washington. In the event of a lawsuit involving this bond, venue shall be proper only in Thurston County Superior Court.

Signed, sealed, and dated this \_\_\_\_\_ day of \_\_\_\_\_, 20 \_\_\_\_\_.

**BID IDENTIFICATION:**

SALES NAME(S)	REQUIRED DEPOSIT	AGREEMENT NUMBER(S)

**DATE OF BID:** \_\_\_\_\_

**It Is Hereby Understood and Agreed:**

*If* PRINCIPAL is the high bidder on the sale(s) identified above and, within ten (10) days of the day of sale, transmits cash, certified check, cashier's check, bank draft or money order, payable to the STATE, in the amount of the bid guaranty required by the terms of the Notice of Sale, *then* this obligation shall be void; *otherwise*, it shall remain in force.

SURETY will make payment to the STATE within ten (10) days after demand by the STATE whenever the PRINCIPAL shall fail to make timely payment as described above.

IN WITNESS WHEREOF: the PRINCIPAL and the SURETY have caused this bond to be executed on the date first mentioned.

**SECOND OFFICER:**

Signature: \_\_\_\_\_

Name: \_\_\_\_\_

Title: \_\_\_\_\_

**PRINCIPAL:** (Above Named)

Signature: \_\_\_\_\_

Name: \_\_\_\_\_

Title: \_\_\_\_\_

**SURETY:** (Local Office of Authorized Agent)

Signature: \_\_\_\_\_

Name: \_\_\_\_\_

Title: \_\_\_\_\_

Address: \_\_\_\_\_

City: \_\_\_\_\_

State & Zip: \_\_\_\_\_

**SURETY:** (Above Named)

Signature: \_\_\_\_\_

Name: \_\_\_\_\_

Title: \_\_\_\_\_

Address: \_\_\_\_\_

City: \_\_\_\_\_

State & Zip \_\_\_\_\_

**NOTARY OR COMPANY SEAL IN THE SPACE ABOVE**

## **Instructions for Completing Timber Sale Per Sale(s) Bid Bond**

- A. This form is authorized for use as bid guaranty to qualify for bidding on Washington State Department of Natural Resources timber sales.
- B. The Timber Sale Per Sale Bid Bond may be used as bid guaranty on more than one timber sale auction held the same date at the same location.
- C. The full legal name and business address of the PRINCIPAL must be the same as will appear on the bidding record and timber sale contract. The bond must be signed by an authorized person, the name typed or printed, and title shown. If PRINCIPAL is a corporation, a second officer must sign in the space to the left of the signature of the officer executing for the PRINCIPAL.
- D. The full legal name and business address of the SURETY must be inserted where indicated. The bond must be signed by an authorized person. Additionally, the name must be typed or printed below the signature and the title must be shown. If this person is not an officer of the corporation, evidence of authority must be submitted.
- E. If the SURETY does not have a Washington State office or resident agent, but is authorized to transact surety business in the State of Washington as Surety, it may leave the local office signature block blank.
- F. The date of the bid bond must not be later than the auction date.
- G. **The State reserves the right to reject incomplete or *incorrect* bid bond forms, making such forms unacceptable as guaranty.**



STATE OF WASHINGTON  
DEPARTMENT OF NATURAL RESOURCES

**LOG SORT SEALED BID FORM**

Sale Name \_\_\_\_\_ Agreement Number \_\_\_\_\_ Date \_\_\_\_\_

\_\_\_\_\_ hereby submits the following bid for delivered logs.  
(Print Company Name)

\_\_\_\_\_ Telephone Number \_\_\_\_\_  
(Print Name Authorized Company Representative) (Contact for bid result notification)

\_\_\_\_\_  
(Street Address)

\_\_\_\_\_  
(City, State and Zip)

Agreement Number	Sort Number	<b><u>Delivered Logs Bid Amount</u></b> (fill in one only)	
		\$ / MBF	\$ / ton

**Bid Deposit Amount** \$ \_\_\_\_\_

- Bid Deposit Type:**
- Cash, Certified Check, Cashiers Check, or Money Order
  - Per Sale Bid Bond
  - Statewide Bid Bond, Number \_\_\_\_\_

The successful bidder agrees to furnish payment security acceptable to the State in the amount as described in clause P-041 of the Purchaser's contract prior to log delivery and at a date to be determined by the State.

**Bidder's Warranty and Bid Signature**

*By signing and submitting this bid as offer to purchase forest products from the State, the Bidder hereby warrants to the State that they have had an opportunity to fully inspect the sale area and the forest products being sold. Bidder further warrants to the State that they enter this bid based solely upon their own judgment of the value of the forest products, formed after their own examination and inspection of both the timber sale area and the forest products being sold. Bidder also warrants to the State that they enter this bid without any reliance upon the volume estimates, acreage estimates, appraisals, pre-bid documentation, or any other representation by the State Department of Natural Resources.*

\_\_\_\_\_  
(Signature of Authorized Representative submitting this bid)

\_\_\_\_\_  
(Date of Signature)

\_\_\_\_\_  
(Print name and title of Authorized Representative submitting this bid)

**NOTES:** A separate bid form is required for each log sort bid and must be delivered in a separate envelope. Photocopies of this bid form may be used. Each photocopy must have original signatures. Final contract award is contingent upon the State's haul cost analysis. Actual haul route may vary and is subject to change at the State's discretion. All sales are subject to confirmation by the Commissioner of Public Lands as per RCW 79.15.100.

# LOG SORT SEALED BID SUPPLEMENTAL INFORMATION FORM

\_\_\_\_\_  
(Print Company Name)

\_\_\_\_\_  
(Sale Name)

\_\_\_\_\_  
(Agreement Number)

\_\_\_\_\_  
(Sort Number)

\_\_\_\_\_  
(email: optional for DNR production report distribution)

## **Log Manufacturing Specifications:**

**Sawlog sorts:** Enter two or more preferred log lengths for each log length range below

**Peeler sorts:** Enter one or more preferred log length for each log length range below

**Ponderosa pine sorts:** Enter one or more preferred log length for each log length range below

**Pole sorts (Distribution):** Enter three or more lengths. Attach preferred manufacturing information.

**Pole sorts (Transmission):** Enter six or more lengths. Attach preferred manufacturing information.

**Tonnage sorts:** See bid form instructions for required log lengths. Enter additional custom lengths as desired.

<b>Log Length Ranges</b>	<b>Bidder's Preferred Log Lengths</b> (Log lengths exclude trim)
<b>12 ft. through 20 ft.</b>	
<b>22 ft. through 30 ft.</b>	
<b>32 ft. through 40 ft.</b>	
<b>Distribution Poles – 35 ft. through 55 ft.</b>	
<b>Transmission Poles – 60 ft.+</b>	

## **Additional Log or Pole Length Information:**

To provide additional preferred cutting information you may attach a separate sheet or "Cutting card".

## **Log Delivery Information:**

1) Designate the point of delivery and address (must be a street address)

\_\_\_\_\_  
(Location Name)

\_\_\_\_\_  
(Street Address)

\_\_\_\_\_  
(City, State and Zip)

2) Designate the state approved Scaling and Weighing facilities closest to the point of delivery as needed.

### **Scaling Location Information**

\_\_\_\_\_  
(Scaling Location Name)

\_\_\_\_\_  
(Third Party Scaling Organization)

\_\_\_\_\_  
(Scaling Location Street Address)

\_\_\_\_\_  
(Scaling Location City, State and Zip)

### **Weighing Location Information**

\_\_\_\_\_  
(Weighing Location Name)

\_\_\_\_\_  
(Weighing Location Owner)

\_\_\_\_\_  
(Weighing Location Street Address)

\_\_\_\_\_  
(Weighing Location City, State and Zip)

**Final contract award is contingent upon the State's haul cost analysis. Actual haul route may vary and is subject to change at the State's discretion. Additional terms or conditions requested by the bidder on or attached to the Log Sort Sealed Bid or Supplemental Information Forms are informational only and non-binding.**



## **Instructions for Completing the Log Sort Sealed Bid and Supplemental Information Forms.**

All bids submitted for the purchase of forest products being sold by the Washington State Department of Natural Resources must have an original signature on behalf of the person or entity submitting the bid, and must be on the form(s) provided in this booklet or a photocopy thereof. The DNR will not accept bids that are not signed, and will not accept bids that are not on the current, approved bid form. All appropriate blanks including Agreement Number, Sort Number, Bid amount (per mbf or ton as appropriate for the sort), Bid deposit amount and type. Signatures and date on bid form must be completed including the bid bond number if bidder is relying upon a bid bond for bid deposit.

Bids may not be accepted if a completed '**Log Sort Sealed Bid Supplemental Information Form**' is not included with the approved '**Log Sort Sealed Bid Form**'.

**Required log lengths for tonnage sorts:** Preferred log lengths for tonnage sawlog sorts shall include the following plus any additional lengths identified on the Bid Supplemental Information form:

<b>Species Type</b>	<b>Preferred Lengths</b>
Conifer Sorts	16', 20', 24', 26', 32', 40'
Hardwood Sorts	18', 20', 26', 28', 30', 36', 38', 40'

For more specific information, contact the appropriate region office.

### **In-Person Bids**

- A. Sealed bids must be in auction box or auction envelope before 10:00 a.m. on the day of sale at the location specified in the notice of sale.
- B. Sealed bids must be submitted in an envelope with the name of the sale, the bidder's name and the contract agreement number clearly written on the outside of the envelope. The full legal name and business address of the bidder must be inserted where indicated on the form, and must be the same as the name on the bid bond and timber sale contract. The bid form must be signed by an authorized person. When a bidder has more than one person authorized to bid, then documentation of those persons with signature authority for bidding must accompany the bid or be on file at the region office. Sealed bid envelopes are available at all region offices. One bid per envelope, please.
- C. Sealed bid envelopes must contain the following:
  1. A completed '**Log Sort Sealed Bid Form**';
  2. A completed '**Log Sort Sealed Bid Supplemental Information Form**' and;
  3. A bid deposit

### **Mailed Bids**

- A. Mail-in bid envelopes are required to have printed on the outside: "DO NOT OPEN UNTIL SALE DATE. SEALED BID ENCLOSED." The sealed bid envelope(s) will be enclosed inside the mailed-in envelope. Mailed bids must be submitted in an envelope with the name of the sale, the bidder's name and the agreement number clearly written on the outside of the envelope. The full legal name and business address of the bidder must be inserted where indicated on the form, and must be the same on the bid bond and timber sale contract. The bid form must be signed by an authorized person. When a bidder has more than one person authorized to bid, then documentation of those persons with signature authority for bidding must accompany the bid or be on file at the region office. Mail-in envelopes are available at all region offices. One bid per mailed-in envelope, please.
- B. Mail-in or otherwise delivered bids will be accepted up to 4:30 p.m. the last business day before the auction by the region office in which the sale is located. Bidders assume the risk for the method of delivery they chose. The DNR assumes no responsibility for any delays caused by any delivery service.
- C. Sealed bid envelopes must contain the following:
  1. A completed '**Log Sort Sealed Bid Form**';
  2. A completed '**Log Sort Sealed Bid Supplemental Information Form**' and;
  3. A bid deposit



# Department of Natural Resources Region Offices

**Olympia Headquarters**  
 1111 Washington St SE  
 MS 47000  
 Olympia, WA 98504-7000  
 (360) 902-1000  
[www.dnr.wa.gov](http://www.dnr.wa.gov)

**Product Sales & Leasing Division**

1111 Washington St SE  
 MS 47014  
 Olympia, WA 98504-7014  
 (360) 902-1600

**South Puget Sound Region**  
 950 Fairman Ave N  
 Enumclaw, WA 98022-9282  
 (360) 825-1631

**Pacific Cascade Region**

601 Bond Road  
 PO Box 280  
 Castle Rock, WA 98611-0280  
 (360) 577-2025

**Southeast Region**

713 Bowers Road  
 Ellensburg, WA 98926-9301  
 (509) 925-8510

**Northwest Region**

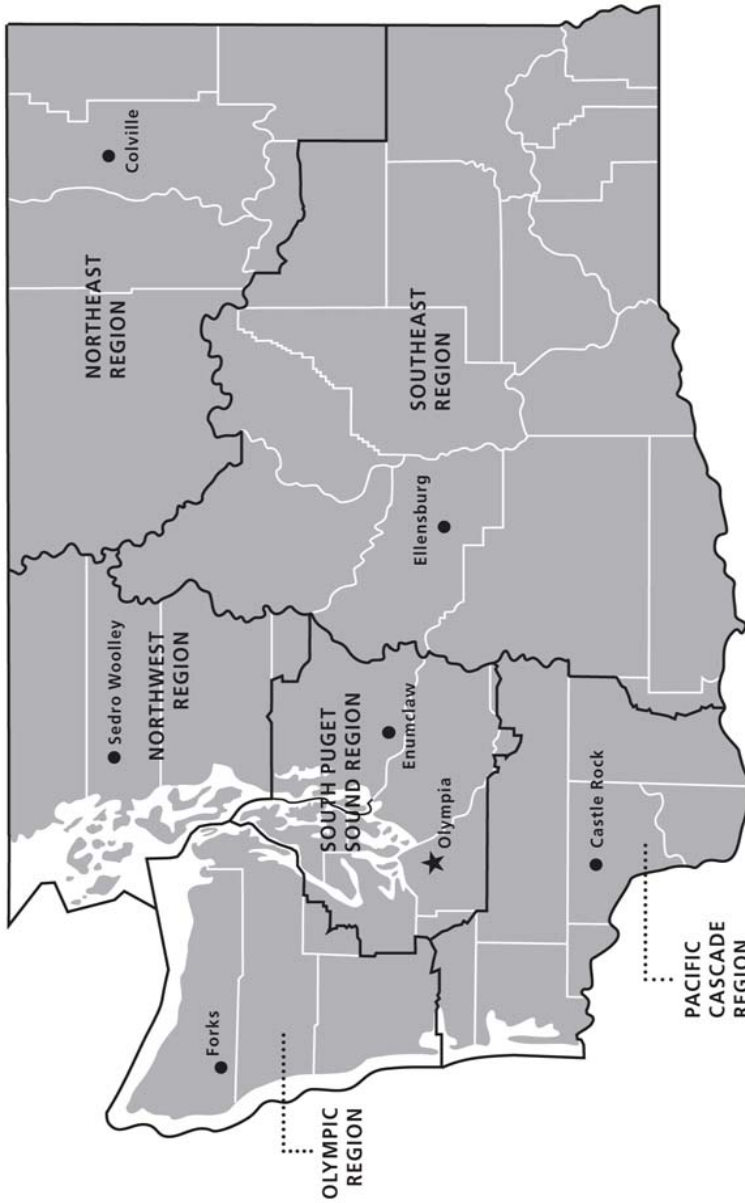
919 N Township St  
 Sedro Woolley,  
 WA 98284-9384  
 (360) 856-3500

**Olympic Region**

411 Tillicum Lane  
 Forks, WA 98331-9271  
 (360) 374-2800

**Northeast Region**

225 S Silke Road  
 PO Box 190  
 Colville, WA 99114-0190  
 (509) 684-7474



**DNR REGIONS**

- DNR Region Boundaries
- County Boundaries
- DNR Region Office
- Olympia Headquarters



WASHINGTON STATE DEPT OF  
**NATURAL RESOURCES**



For more information about how public lands are managed visit DNR's web page at [www.dnr.wa.gov](http://www.dnr.wa.gov)

Fire, Burn Ban Information and Region Offices  
 Toll Free: 1-800-527-3305 General TTY: 7-1-1





WASHINGTON STATE DEPT OF  
**NATURAL  
RESOURCES**

1111 WASHINGTON ST SE  
MS 47014  
OLYMPIA WA 98504-7014

[www.dnr.wa.gov](http://www.dnr.wa.gov)

For alternate formats  
of this document,  
Call (360) 902-1000  
TRS: 7-1-1

PRINTED IN THE USA ON RECYCLED PAPER

