

N A T U R A L

R E S O U R C E S

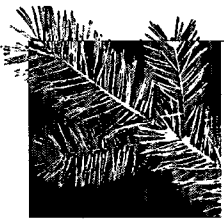
FINAL HABITAT CONSERVATION PLAN

September 1997



WASHINGTON STATE DEPARTMENT OF
Natural Resources

Jennifer M. Belcher - Commissioner of Public Lands



Authority

This Plan was approved and adopted by the Board of Natural Resources (Resolution 96-911, November 5, 1996).

Board of Natural Resources

The following individuals were seated on the Board at the time of adoption.

Jennifer Belcher, *Chair, Commissioner of Public Lands*

Judith Billings, *Superintendent of Public Instruction*

David Thorud, *Dean, College of Forest Resources, University of Washington*

Dorothy Duncan, *County Commissioner representing the Forest Board counties*

Bob Nichols, *Executive Policy Division, OFM - designee for Governor Mike Lowry*

James Zuiches, *Dean, College of Agriculture and Home Economics, Washington State University*



Jennifer M. Belcher
Commissioner of Public Lands

September 1997

Dear Reader:

The Washington Department of Natural Resources manages 3 million acres of state lands in trust for common schools, state universities, other public institutions, and county services. About 2.1 million acres are forestlands.

As a prudent trust manager, the department follows all applicable laws, including the Endangered Species Act. Since 1990, when the northern spotted owl was listed as a threatened species, the department has been subject to continually changing requirements for the management of state forest lands, resulting in uncertainty and instability that is expected to increase due to the prospect of additional species being listed as threatened or endangered in the future. At the same time, current regulations don't necessarily provide certainty or stability for the future of the protected species.

The department is charged with preserving the productivity of the trusts in perpetuity, which we believe requires protecting the long-term health of forests and the ecosystem. We therefore began to look for a better way to manage the state's forested trust lands and protect threatened and endangered species. The Endangered Species Act offers such an option through the creation of a habitat conservation plan (HCP), which allows more flexibility in land management activities and innovation in protection of threatened wildlife.

With assistance from wildlife experts, our own silvicultural experts, trust beneficiaries, and the public, I believe the Washington State Department of Natural Resources has developed an HCP that will keep state trust lands at the forefront of excellence in forest land management. At the same time, our HCP will provide certainty, stability, and flexibility to both the trusts and wildlife.

Sincerely,

JENNIFER M. BELCHER
Commissioner of Public Lands

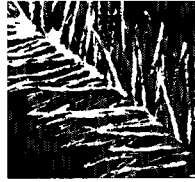
FINAL HABITAT CONSERVATION PLAN

September 1997



WASHINGTON STATE DEPARTMENT OF
Natural Resources

Jennifer M. Belcher - Commissioner of Public Lands



Acronyms

ACRONYMS USED IN THE TEXT OF THE HCP

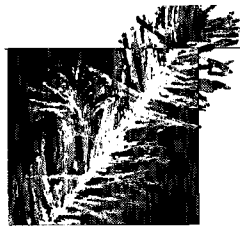
| | |
|-------|---|
| dbh | Diameter at breast height |
| DNR | Washington Department of Natural Resources |
| EIS | Environmental Impact Statement |
| FEMAT | Forest Ecosystem Management Assessment Team |
| GIS | Geographic Information System |
| HCP | Habitat Conservation Plan |
| NRF | Nesting, roosting, and foraging habitat |
| OESF | Olympic Experimental State Forest |
| RCW | Revised Code of Washington |
| SEPA | State Environmental Policy Act |
| WAC | Washington Administrative Code |
| WAU | Watershed Administrative Unit |

ACRONYMS USED IN CITATIONS

| | |
|--------|---|
| C.F.R. | Code of Federal Regulations |
| LULC | Land Use/Land Cover (GIS data layer) |
| MPL | Major Public Lands (GIS data layer) |
| NMFS | National Marine Fisheries Service |
| ODFW | Oregon Department of Fish and Wildlife |
| PFRT | Peregrine Falcon Recovery Team |
| PHS | Priority Habitat and Species |
| U.S.C. | U.S. Code |
| USDA | U.S. Department of Agriculture |
| USDI | U.S. Department of the Interior |
| USFWS | U.S. Fish and Wildlife Service |
| WDF | Washington Department of Fisheries (merged into WDFW in 1994) |
| WDFW | Washington Department of Fish and Wildlife |
| WDW | Washington Department of Wildlife (merged into WDFW in 1994) |
| WFPB | Washington Forest Practices Board |
| USEPA | U.S. Environmental Protection Agency |

ACRONYMS WITH LIMITED USE IN THE TEXT (I.E., ONE TO TWO PAGES)

| | |
|------|--|
| ESU | Evolutionarily Significant Unit (Chapter III - salmonids and riparian areas) |
| HAU | Hydrologic Analysis Unit (Chapter IV - riparian conservation strategy) |
| NAP | Natural Area Preserve (Chapter I - land covered) |
| NRCA | Natural Resource Conservation Area (Chapter I - land covered) |
| PFA | Post-fledgling family area (Chapter IV - multispecies conservation strategy) |
| TFW | Timber/Fish/Wildlife Agreement |
| WRIA | Water Resource Inventory Area (Chapter I - planning area organization) |



Contents

I. INTRODUCTION

- 1 DNR's Habitat Conservation Plan
- 2 Species Covered by the HCP
- 2 Land Covered by the HCP
- 12 Organization of the Planning Area

II. PLANNING CONTEXT

- 1 Trust Duties
- 3 The Endangered Species Act
- 5 Federal Plans and Rules for Recovery of the Northern Spotted Owl and Marbled Murrelet
- 11 Other Wildlife Statutes and Regulations
- 12 Environmental Laws
- 13 The State Forest Practices Act
- 14 DNR's Forest Resource Plan

III. BIOLOGICAL DATA FOR SPECIES COVERED BY THE HCP

1 A. Northern Spotted Owl

- 1 Species Ecology/Literature Review
- 15 Spotted Owls on the Olympic Peninsula
- 20 DNR's Survey Data

23 B. Marbled Murrelet

- 23 Species Ecology/Literature Review
- 43 DNR's Forest Habitat Relationship Studies

47 C. Other Federally Listed Species Within the Range of the Northern Spotted Owl

- 47 Oregon Silverspot Butterfly
- 47 Aleutian Canada Goose
- 48 Bald Eagle
- 49 Peregrine Falcon
- 50 Gray Wolf
- 50 Grizzly Bear
- 51 Columbian White-tailed Deer

53 D. Salmonids and the Riparian Ecosystem

- 53 Introduction
- 53 Anadromous Salmonid Life Cycle
- 54 Bull Trout Life Cycle
- 57 Salmonid Habitat Needs and the Riparian Ecosystem
- 66 Status and Distribution

75 E. Other Species of Concern in the Area Covered by the HCP

- 79 Federal Candidate Species, Federal Species of Concern, State-listed Species, State Candidate Species, and Other Sensitive Species
 - 79 — Mollusks
 - 79 — Arthropods
 - 81 — Fish
 - 82 — Amphibians
 - 87 — Reptiles
 - 89 — Birds
 - 95 — Mammals

101 F. Listed and Candidate Plants

- 101 Non-vascular Plants and Fungi
- 101 Vascular Plant Taxa of Concern

IV. THE HABITAT CONSERVATION PLAN

1 A. Minimization and Mitigation for the Northern Spotted Owl in the Five West-side and All East-side Planning Units

- 1 Conservation Objective
- 3 Conservation Strategy for the Five West-side Planning Units
- 19 Conservation Strategy for the Three East-side Planning Units
- 26 Rationale for the Spotted Owl Conservation Objective and Strategies
- 29 Current Habitat and Projected Habitat Growth in Nesting, Roosting, and Foraging and Dispersal Management Areas
- 36 Potential Benefits and Impacts to Spotted Owls

39 B. Minimization and Mitigation for the Marbled Murrelet in the Five West-side and the Olympic Experimental State Forest Planning Units

- 39 Conservation Objective
- 39 Interim Conservation Strategy
- 40 Habitat Definitions
- 42 Possible Components of a Credible Long-term Conservation Strategy
- 44 Potential Benefits and Impacts to Marbled Murrelets

47 C. Minimization and Mitigation for Other Federally Listed Species in All Planning Units

- 47 Oregon Silverspot Butterfly
- 48 Aleutian Canada Goose
- 48 Bald Eagle
- 48 Peregrine Falcon
- 49 Gray Wolf
- 51 Grizzly Bear
- 52 Columbian White-tailed Deer

55 D. Riparian Conservation Strategy for the Five West-side Planning Units

- 55 Conservation Objectives
- 56 Conservation Components
- 70 Rationale for the Conservation Components
- 77 Effects of the Riparian Conservation Strategy on Salmonid Habitat

81 E. Olympic Experimental State Forest Planning Unit

- 81 Integrated Approach to Production and Conservation
- 86 Conservation Strategy for the Northern Spotted Owl in the Olympic Experimental State Forest
- 106 Riparian Conservation Strategy for the Olympic Experimental State Forest
- 134 Multispecies Conservation Strategy for Unlisted Species in the Olympic Experimental State Forest

145 F. Multispecies Conservation Strategy for Unlisted Species in the Five West-side Planning Units

- 145 Introduction
- 146 Conservation Objectives
- 147 Conservation Strategy
- 150 Benefits of the Species-specific Strategies to Unlisted Species
- 151 Protection of Uncommon Habitats
- 158 Species by Species Conservation for Unlisted Species of Concern
 - 158 — Mollusks
 - 159 — Arthropods
 - 159 — Fish
 - 160 — Amphibians
 - 161 — Reptiles
 - 161 — Birds
 - 167 — Mammals
- 170 Summary of Habitat Types Provided on DNR-managed Forest Lands in the Five West-side Planning Units

179 Provision of a Range of Forest Types Across the HCP Landscape

183 G. Conservation Assessments for Federally Listed Plant Species, Candidate Plant Species, and Plant Species of Concern

183 Federally Listed Plant Taxa Species
184 Plant Species Proposed for Federal Listing
184 Federal Candidate Plant Species
184 Plant Species of Concern

191 H. Forest Land Management Activities

191 Introduction
191 Activities Common to All Planning Units
200 Activities in the East-side Planning Units
203 Activities in the Five West-side Planning Units
209 Activities in the Olympic Experimental State Forest Planning Unit

V. PLAN IMPLEMENTATION

1 Funding
1 Transition Activities
1 Monitoring
6 Research
9 Reporting

VI. ALTERNATIVES TO THE HABITAT CONSERVATION PLAN THAT WOULD AVOID TAKE

1 No Action/No Change (Current Practices)
2 No Harvest/No Take

A APPENDIX

1 Geographic Analysis

B APPENDIX

Implementation Agreement

REFERENCES

1 Chapter I Literature Cited
1 Chapter II Literature Cited
2 Chapter III Literature Cited
34 Chapter IV Literature Cited
50 Chapter V Literature Cited
50 Unpublished References
52 Staff Reports
52 Personal Communications

GLOSSARY

MAPS

TABLES

| | | |
|-----|--------|--|
| 4 | I.1 | DNR-managed HCP lands by dominant size class and area for uneven-aged stands |
| 4 | I.2 | Acreage by ownerships in the area covered by the HCP |
| 8 | I.3 | Vegetative zones in the area covered by the HCP |
| 13 | I.4 | Major features and acreage of DNR-managed lands by planning unit and planning area |
| 19 | III.1 | Estimates of forest cover types on lands of different ownerships in the Olympic Experimental State Forest area, July 1991 |
| 22 | III.2 | Northern spotted owl site centers on or affecting DNR-managed lands as of the end of the 1995 survey season |
| 28 | III.3 | Characteristics of nest stands used by the marbled murrelet |
| 32 | III.4 | Characteristics of nest trees used by the marbled murrelet |
| 39 | III.5 | Old-growth, large-saw, and small-saw forests below 3,500 feet and less than 66 miles from marine waters, by ownership |
| 44 | III.6 | Allocation of survey areas in each planning unit, by habitat type and distance from marine waters |
| 45 | III.7 | Prescribed number of visits for each survey area for both years of the DNR marbled murrelet forest habitat relationships studies |
| 52 | III.8 | Federally listed wildlife, their state status, and their potential occurrence in HCP planning units |
| 55 | III.9 | Life cycles of western Washington anadromous salmonids in freshwater, by species and run |
| 69 | III.10 | Status of salmonid stocks in the five west-side planning units and the Olympic Experimental State Forest |
| 71 | III.11 | Percent of DNR-managed forest land west of the Cascade crest in Watershed Analysis Units that contain salmonids |
| 72 | III.12 | Estimated miles of fishbearing streams on DNR-managed lands west of the Cascade crest |
| 73 | III.13 | Percent of total land area west of the Cascade crest that impacts salmonids and is managed by DNR |
| 76 | III.14 | Other species of concern, by federal and state status and their potential occurrences in the HCP planning units |
| 101 | III.15 | Federally listed and proposed vascular plant taxa in the area covered by the HCP |
| 103 | III.16 | Federal candidate vascular plant taxa in the area covered by the HCP |
| 103 | III.17 | Federal species of concern vascular plant taxa in the area covered by the HCP |
| 14 | IV.1 | Spotted owl nest tree characteristics in western Washington |
| 15 | IV.2 | Spotted owl nest stand characteristics in western Washington |
| 24 | IV.3 | Recommended method for estimating habitat quality for spotted owls using tree- and stand-level indices of mistletoe infection |
| 30 | IV.4 | Summaries of current spotted owl habitat conditions by planning unit |
| 58 | IV.5 | Expected average widths of interior-core riparian buffers in the Olympic Experimental State Forest |
| 90 | IV.6 | Two estimates of the current abundance of potential spotted owl habitat in proposed landscape planning units of the Olympic Experimental State Forest |
| 92 | IV.7 | An estimate of the future abundance of potential spotted owl habitat in proposed landscape planning units of the Olympic Experimental State Forest and the forest at large based on one set of harvest regimes |
| 117 | IV.8 | Proposed average widths of exterior riparian buffers in the Olympic Experimental State Forest |
| 120 | IV.9 | Proposed protection of forested and nonforested wetlands in the Olympic Experimental State Forest |
| 123 | IV.10 | Comparison of average riparian buffer widths expected as a result of applying the Olympic Experimental State Forest riparian conservation strategy and buffer widths proposed in the literature for several key watershed parameters |
| 130 | IV.11 | Components of a preliminary assessment of physical and biological watershed conditions for the 12-step watershed assessment procedure for the Olympic Experimental State Forest |
| 134 | IV.12 | Number of acres and percent of land base projected in the Olympic Experimental State Forest riparian interior-core buffer, exterior buffer, and combined (total) buffer, by forest age class |
| 174 | IV.13 | Habitats and representative wildlife species covered by this HCP for the west-side planning units |

-
- 180 IV.14 DNR HCP stand structure objectives at year 100 (in percent of land area)
 - 211 IV.15 Estimated amount of forest land management activities on DNR-managed lands in the area covered by the HCP during the first decade of the HCP
 - 212 IV.16 Estimated amount of habitat on DNR-managed lands in the area covered by the HCP at the end of the first decade of the HCP

 - 4 V.1 Outline of the HCP monitoring program
 - 5 V.2 Environmental barrier to be measured in effectiveness monitoring for the spotted owl conservation strategy
 - 6 V.3 Environmental variables to be measured in effectiveness monitoring for the Riparian Conservation Strategy

FIGURES

- 3 I.1 DNR-managed HCP lands by age class and area for even-aged stands

- 58 III.1 The riparian ecosystem
- 60 III.2 Relation between effectiveness of terrestrial elements of salmonid habitat and distance from stream channel

- 31 IV.1 Age-class distribution in the five west-side planning units in 1996
- 32 IV.2 Projected age-class distribution in the five west-side planning units in 2046
- 33 IV.3 Projected age-class distribution in the five west-side planning units in 2096
- 34 IV.4 Projected age-class distribution in DNR NRF areas in the five west-side planning units from 1996 to 2096
- 35 IV.5 Projected age-class distribution in DNR dispersal areas in the five west-side planning units from 1996 to 2096
- 38 IV.6 Contribution of habitat from DNR-managed lands to known spotted owl circles in the five west-side and all east-side planning units
- 57 IV.7 The relationship between the riparian ecosystem and DNR's riparian management zone
- 109 IV.8 Geomorphic features associated with riparian areas
- 113 IV.9 Example of management protection (riparian buffer) placed on Type 5 channel system
- 114 IV.10 Application of expected average interior-core and exterior buffer widths to a segment of the Clallam River and its tributaries
- 115 IV.11 Comparison of expected average riparian buffer widths and buffers applied to protect only mass-wasting sites for a segment of the Clallam River and its tributaries
- 116 IV.12 Application of expected average riparian buffer widths adjusted for mass-wasting sites for a segment of the Clallam River and its tributaries: one potential scenario
- 129 IV.13 Twelve-step watershed assessment procedure for meeting riparian conservation and management objectives in the Olympic Experimental State Forest

MAPS

- I.1 DNR-managed lands covered by the Habitat Conservation Plan
- I.2 Location of uneven-aged and even-aged stands on DNR-managed lands covered by the HCP
- I.3 DNR-managed lands and adjacent ownerships in the area covered by the HCP
- I.4 HCP Planning Units
- I.5 North Puget Planning Unit
- I.6 South Puget Planning Unit
- I.7 Columbia Planning Unit
- I.8 Straits Planning Unit
- I.9 South Coast Planning Unit
- I.10 Klickitat Planning Unit
- I.11 Yakima Planning Unit
- I.12 Chelan Planning Unit
- I.13 The Olympic Experimental State Forest Planning Unit

- II.1 DNR-managed trust lands in the area covered by the HCP

-
- III.1 Physiographic provinces of the northern spotted owl
 - III.2 Range of the marbled murrelet and population sizes along the Pacific coast

 - IV.1 Role of DNR-managed lands in providing mitigation for the northern spotted owl in the North Puget Planning Unit
 - IV.2 Role of DNR-managed lands in providing mitigation for the northern spotted owl in the South Puget Planning Unit
 - IV.3 Role of DNR-managed lands in providing mitigation for the northern spotted owl in the Columbia Planning Unit
 - IV.4 Role of DNR-managed lands in providing mitigation for the northern spotted owl in the Straits Planning Unit
 - IV.5 Role of DNR-managed lands in providing mitigation for the northern spotted owl in the South Coast Planning Unit
 - IV.6 Role of DNR-managed lands in providing mitigation for the northern spotted owl in the Klickitat Planning Unit
 - IV.7 Role of DNR-managed lands in providing mitigation for the northern spotted owl in the Yakima Planning Unit
 - IV.8 Role of DNR-managed lands in providing mitigation for the northern spotted owl in the Chelan Planning Unit
 - IV.9 Landscape planning units in the Olympic Experimental State Forest