



Vancouver Harbor Area

JT Marine Harbor Line Relocation

September 5, 2023



Harbor Line Commission

- RCW 79.115.010 – The Board acts as the Harbor Line Commission
- Article XV of the State Constitution
 - Appointed a commission to locate and establish harbor lines in the navigable waters of all harbors, estuaries, bays and inlets of the state, within or in front of the corporate limits of any city or within one mile on either side
 - Harbor lines can be changed, relocated or reestablished by the commission
 - The state shall never give, sell or lease to private corporations, associations or individuals any rights beyond harbor lines
 - These areas shall be forever reserved for landings, wharves, streets and other conveniences of navigation and commerce
- Enabling legislation RCW 79.115.030
 - **Commission on harbor lines may change, relocate, or reestablish harbor lines**



Harbor Line Commission

- WAC 332-30-109 provides guidance to DNR to manage Harbor Areas and WAC 332-30-115 establishes specific uses classes including:
 - Water-dependent commerce
 - Water-oriented commerce
 - Interim uses
 - Public access



Harbor Area Uses

Water-dependent commerce

- Public and private vessel terminal and transfer facilities
- Public and private terminal facilities for passenger vessels
- Watercraft construction, repair, maintenance, servicing and dismantling
- Marinas and mooring areas
- Tug and barge facilities
- Log booming

Interim uses

- Interim uses do not require waterfront locations in order to properly function

Water-oriented commerce

- Wood products manufacturing
- Watercraft sales
- Fish processing
- Sand and gravel companies
- Petroleum handling and processing plants
- Log storage

Public access

- Public fishing piers
- Public waterfront parks
- Public use beaches
- Aquariums available to the public
- Underwater parks and reefs
- Public viewing areas and walkways



Harbor Area Relocations

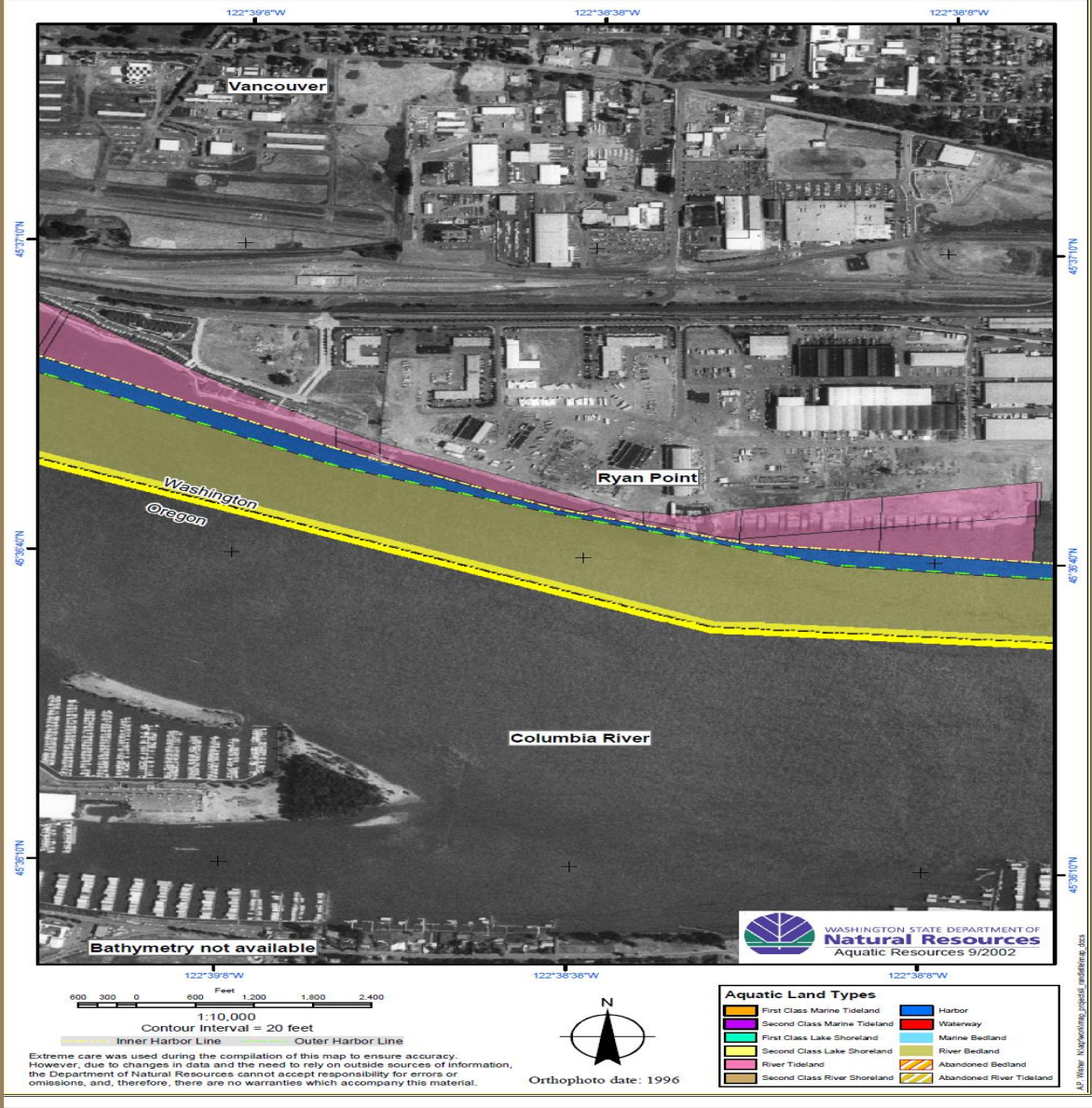
Guidance and criteria for harbor line relocations (WAC 332-30-116)

- Maintain or enhance type and amount of harbor area needed for long-term water-dependent commerce
- Maintain adequate space for navigation beyond the outer harbor line
- Agreement with plans and development of public ports, counties, cities, and other local, state, tribal and federal agencies
- Maintain public access to the waterfront



Harbor Area





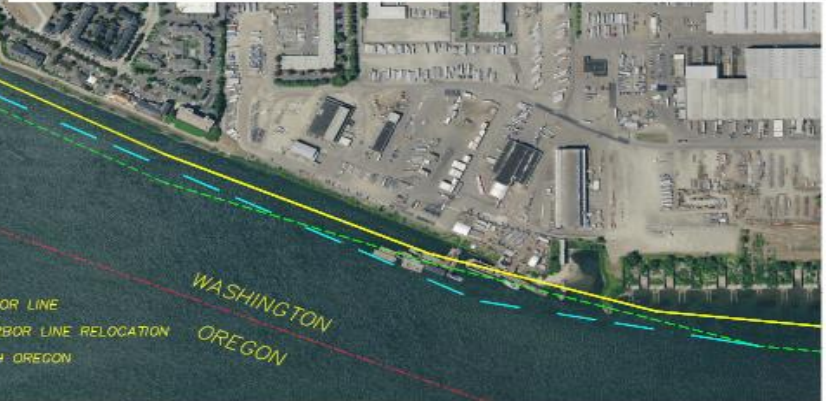
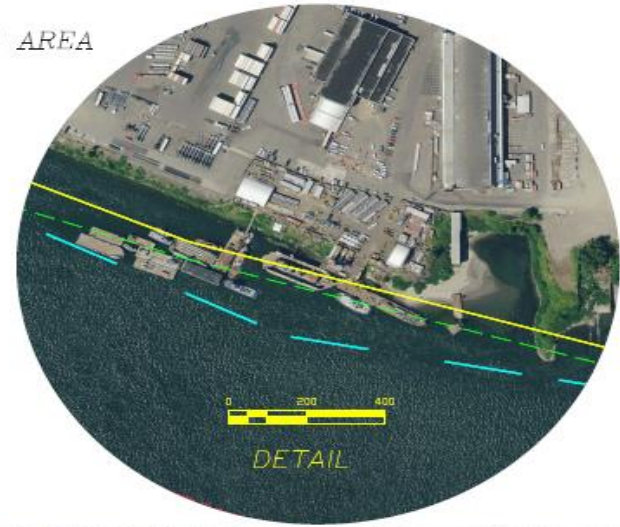
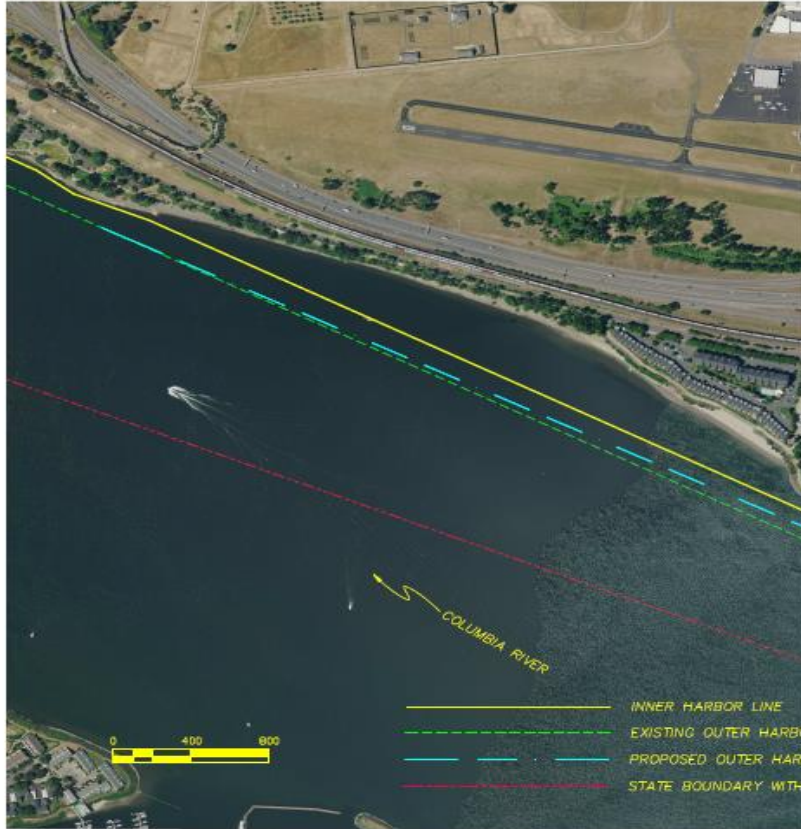
Harbor Line Relocation Request

- JT Marine, Inc. is requesting the Harbor Line Commission to consider relocation of the outer harbor line 50 feet waterward at Ryan Point, River Mile 108, Columbia River
- This change will provide additional harbor area space for barges and equipment currently moored beyond the outer harbor line, which is out of compliance.



2023 PROPOSED
OUTER HARBOR LINE RELOCATION
VANCOUVER, WASHINGTON

VANCOUVER HARBOR AREA

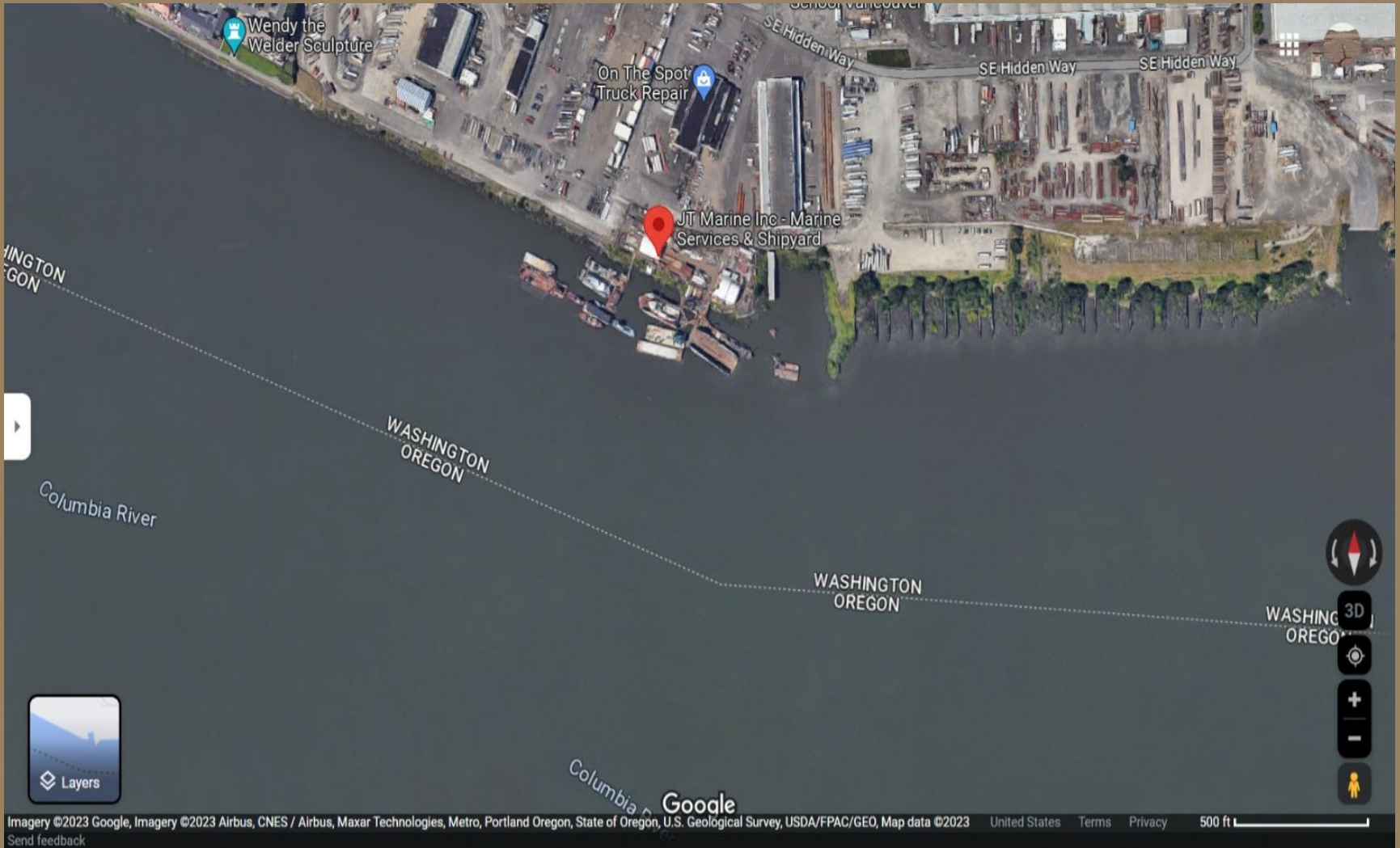


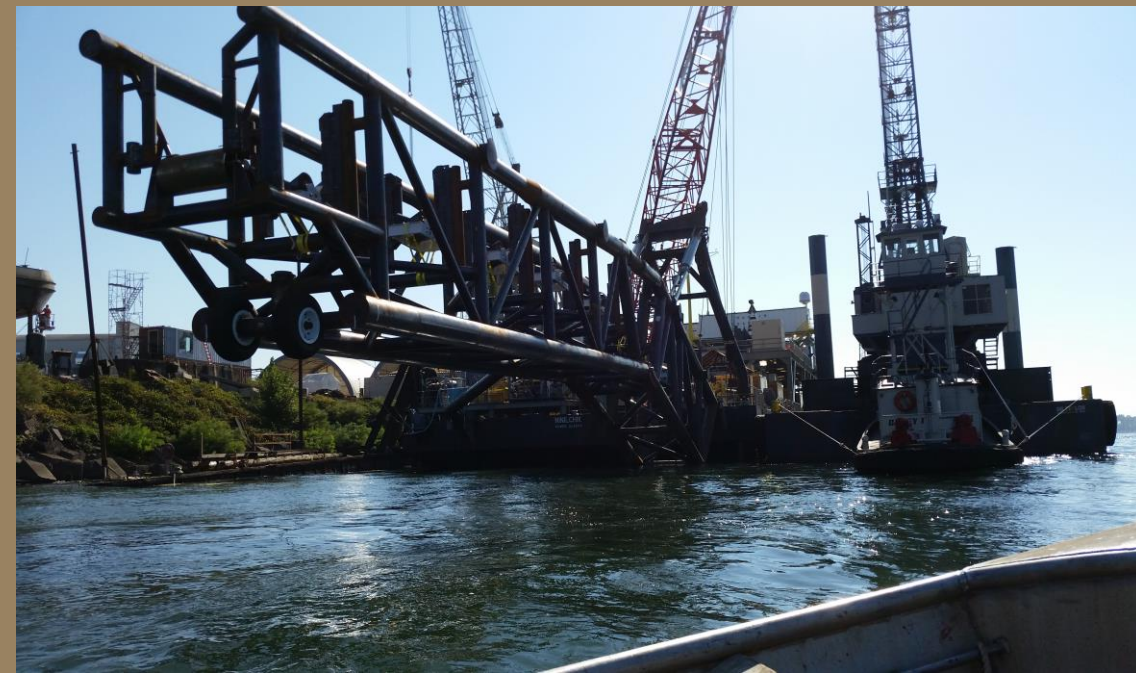
- INNER HARBOR LINE
- - - EXISTING OUTER HARBOR LINE
- - - PROPOSED OUTER HARBOR LINE RELOCATION
- - - STATE BOUNDARY WITH OREGON



STATE OF WASHINGTON
DEPARTMENT OF NATURAL RESOURCES
AQUATIC RESOURCES DIVISION







WASHINGTON STATE DEPARTMENT OF
NATURAL RESOURCES



WASHINGTON STATE DEPARTMENT OF
NATURAL RESOURCES

Harbor Area Relocation Process

To date:

- ❖ August 25, 2023, DNR held a Public Hearing on in Vancouver, WA
- ❖ September 5, 2023, Harbor Line Commission briefing

What are the next steps?

- ❖ September 6, 2023, SEPA will be initiated and open for public review and comment
- ❖ September 22, 2023 – SEPA review period ends
- ❖ October 3, 2023 – Harbor Line Commission makes a final decision



