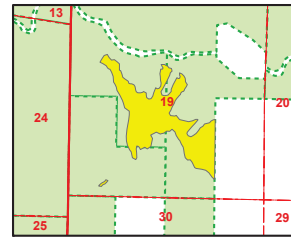
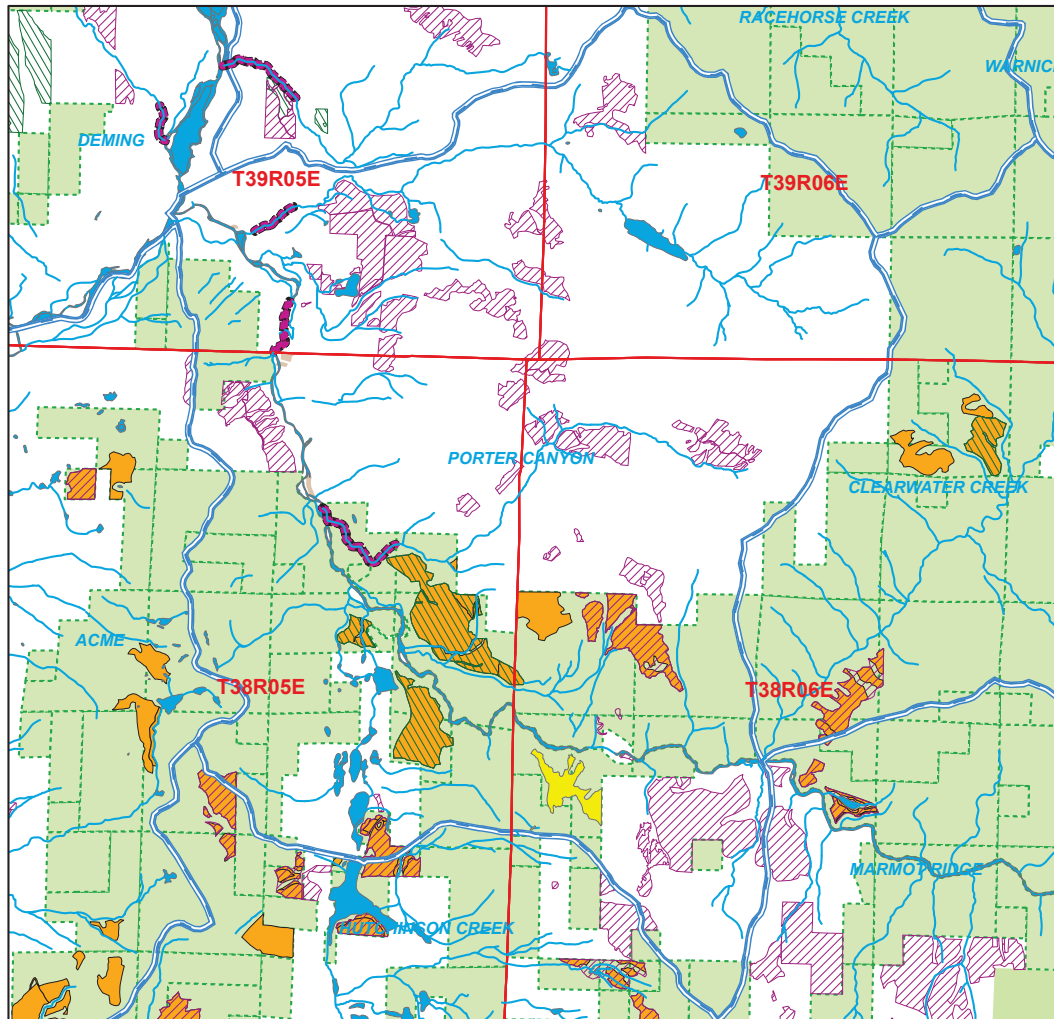


Sale Name: BROKEDOWN PALACE
 Sale District: HAMILTON District
 Sale Date: March, 2023
 WAU: Porter Canyon
 WAU Acres: 19789.4
 Sale Location: T38R06E 19



This color map is produced by the Washington Department of Natural Resources (DNR), for discussion purposes only. If the copy you have is black and white, some of the information may not read correctly. Wetland locations are from the National Wetland Inventory (NWI) database. They are incomplete and may need field verification. The source data for this map is stored on the DNR's Geographic Information System. Although the DNR makes every reasonable effort to keep such data current, it cannot and does not accept liability for any errors or omissions. No warranty accompanies this material. REFER TO SEPA CHECKLIST FOR ADDITIONAL DETAIL.



1 in = 1:78,391 ft



- | | | |
|----------------------|---------------------------------|-------------------|
| Sold Sales | National Park Service | Stream Types 1-4 |
| Even-Aged Approved | US Fish and Wildlife Service | 303D Listed Water |
| Uneven-Aged Approved | US Bureau of Land Management | NAP's & NRCA's |
| DNR-Managed Land | Other Federal | Water Bodies |
| Tribal Lands | Other State | BROKEDOWN PALACE |
| US Forest Service | County, Municipal or University | |
| | WAU Boundary | |

*(Sold Sales, Even-Aged and Uneven-Aged Approved represent data from last seven years only.)