

Trail Terminology +

Overview

- Recreational Trails Policy
 - Primary Guidelines
 - Primary Management Objectives (PMOs)
 - Trail Management Objectives (TMOs)
 - Recreational Trail Development and Evaluation Criteria
- USFS Trail Documents
 - Trail Fundamentals
 - Design Parameters, Trail Class, & TMOs
 - Trail Standard Plans & Specifications
- Beyond the USFS
 - When USFS are inadequate - Adopting or Developing our own

Recreational Trails Policy

Trail Standards and Primary Guidelines

“DNR should use trail standards developed by the United States Forest Service as primary guidelines for trail design, construction, and maintenance.”

- DNR may adopt guidelines, standards, best practices, etc. from other organizations, when appropriate, as additional primary guidelines
- DNR will develop its own when others are insufficient or inapplicable

Recreational Trails Policy
Primary Management Objectives (PMOs)

DNR will use PMOs to indicate the principle recreation type(s)
for which a designated recreation area is managed.

Recreational Trails Policy

Secondary/Allowed Uses - what are they?

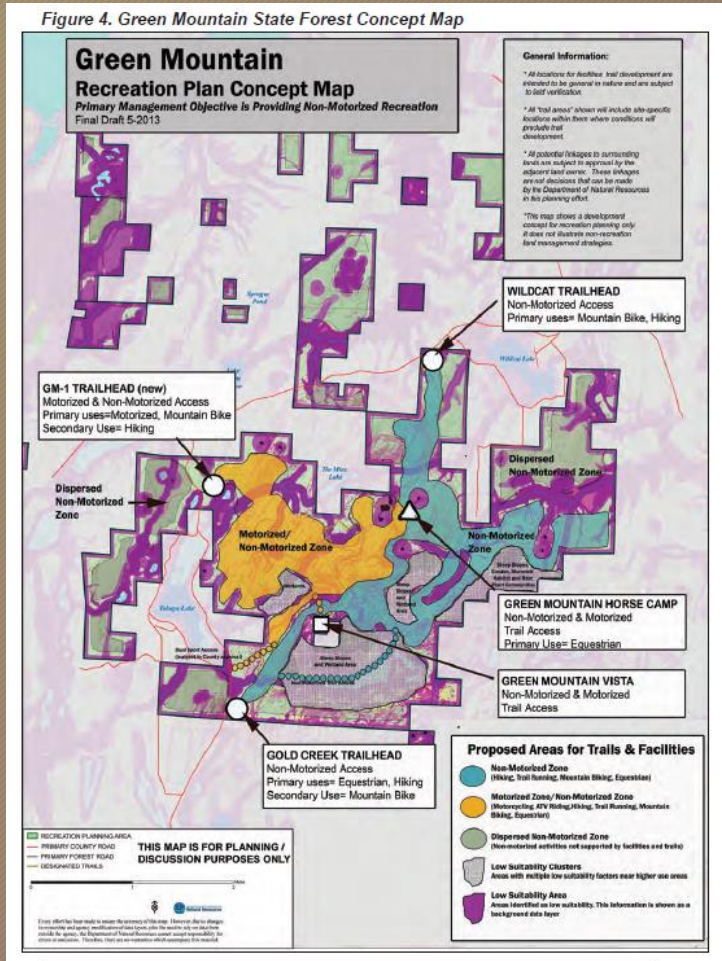
- All other uses that are allowed (or NOT prohibited) in the area
- The area may not necessarily be designed for that use.

(In the event of conflict, secondary use(s) may lose privileges)

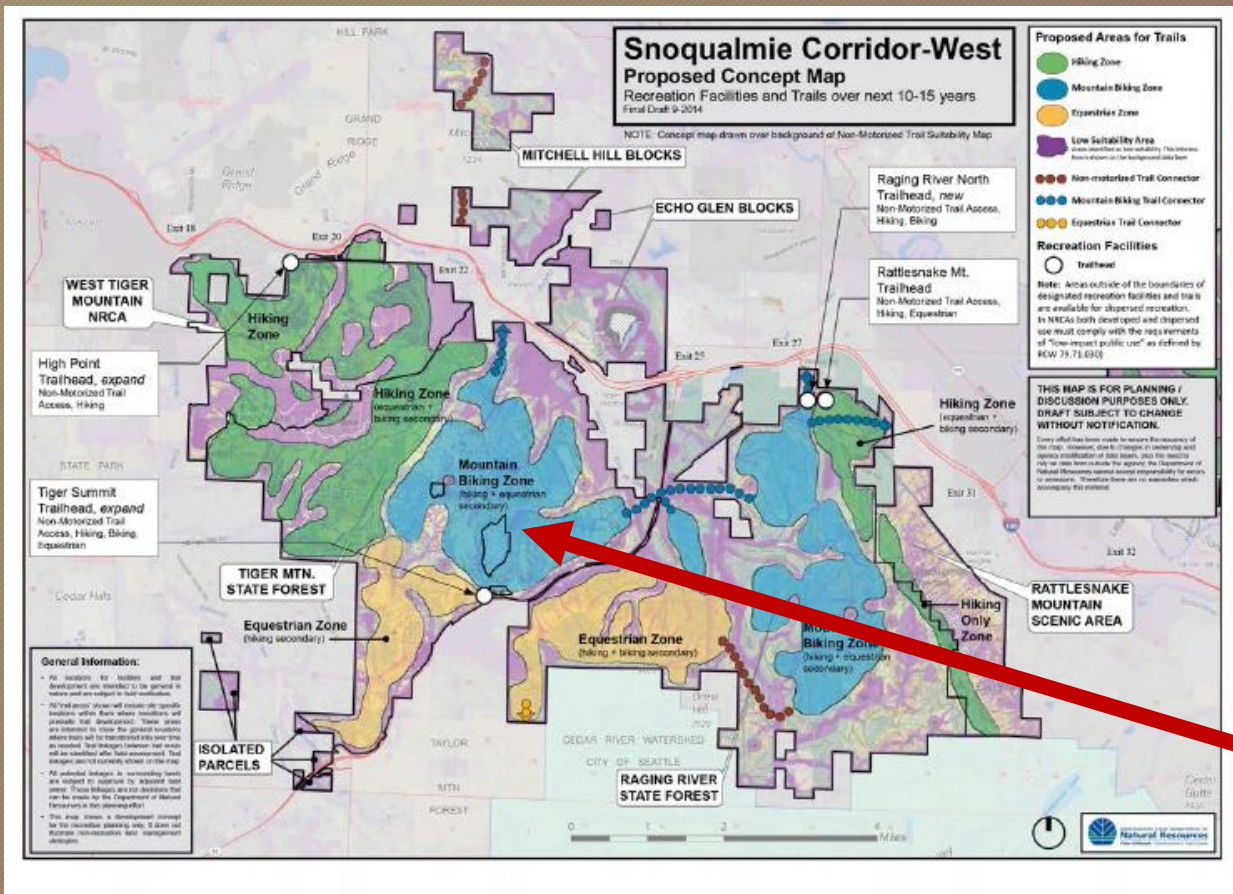
Example 1 of Designated PMOs: Green Mountain State Forest

PMO = Non Motorized Recreation
Secondary use = motorized

Within Green Mountain there were
designated Motorized and
Nonmotorized 'zones'



Example 2 of PMO designation: Tiger Mountain and Raging River State Forests



Forests were separated into 'zones' and each zone had a PMO and secondary use

**PMO - Mountain Biking
Secondary-Hiking and Equestrian**

US Forest Service Trail Fundamentals

(helpful tools to inform trail standards)

5 concepts for USFS trail management

- Trail Type
- Trail Class*
- Managed Use
- Designed Use
- Design Parameters**

What is the USFS Trail Class* Matrix?

- Trail Classes 1 - 5
(Minimally Developed to Fully Developed)
- Varies based upon the use type
- Covers the following Trail Attributes:
 - Tread & Traffic Flow
 - Obstacles
 - Constructed Features & Trail Elements
 - Signage
 - Typical Recreation Environment & Experience



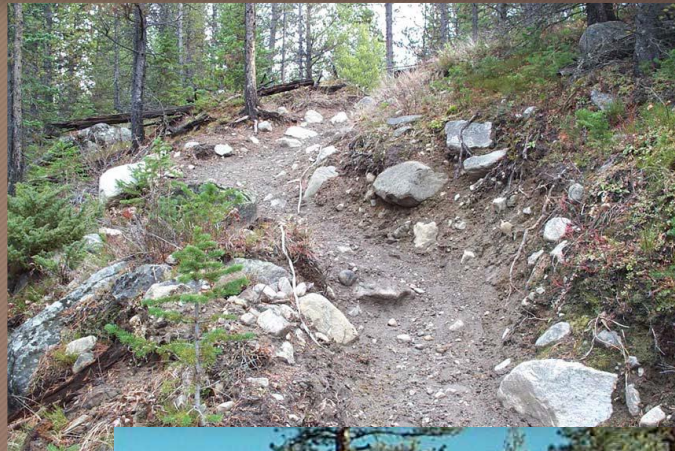
Trail Class Matrix

Trail Classes are general categories reflecting trail development scale, arranged along a continuum. The Trail Class identified for a National Forest System (NFS) trail prescribes its development scale, representing its intended design and management standards.¹ Local deviations from any Trail Class descriptor may be established based on trail-specific conditions, topography, or other factors, provided that the deviations do not undermine the general intent of the applicable Trail Class.

Identify the appropriate Trail Class for each National Forest System trail or trail segment based on the management intent in the applicable land management plan, travel management direction, trail-specific decisions, and other related direction. Apply the Trail Class that most closely matches the management intent for the trail or trail segment, which may or may not reflect the current condition of the trail.

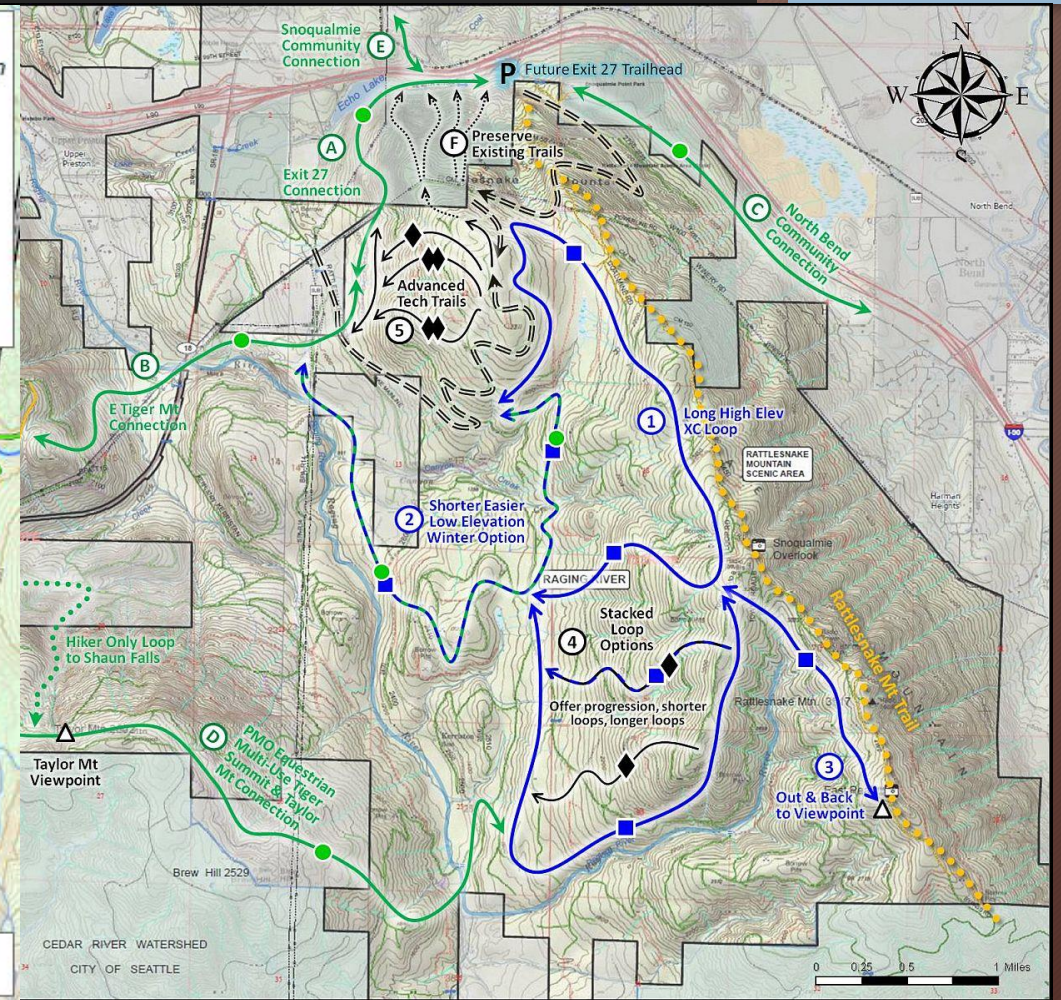
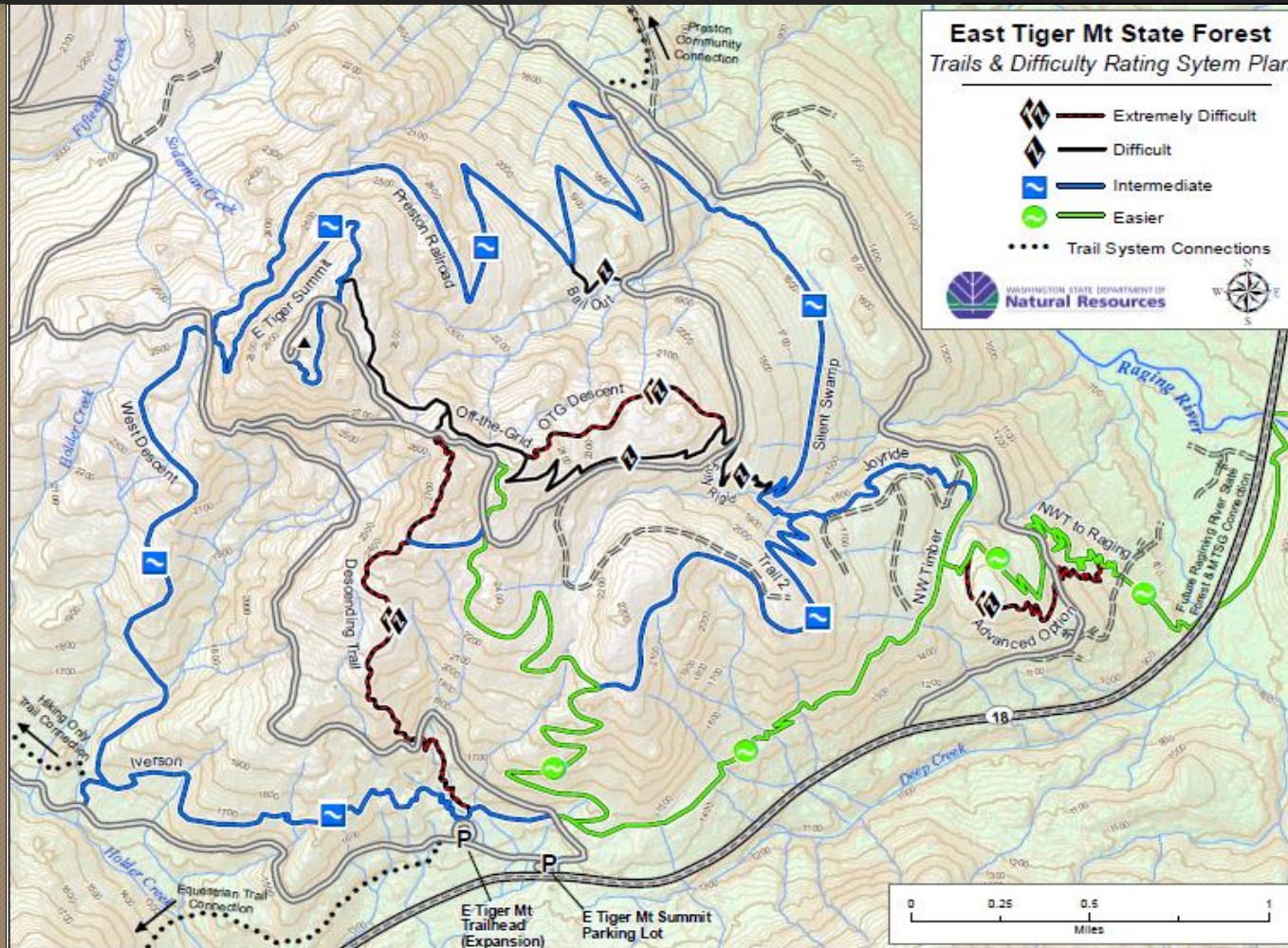
Trail Attributes	Trail Class 1 Minimally Developed	Trail Class 2 Moderately Developed	Trail Class 3 Developed	Trail Class 4 Highly Developed	Trail Class 5 Fully Developed
Tread & Traffic Flow	<ul style="list-style-type: none"> • Tread intermittent and often indistinct • May require route finding • Single lane with no allowances constructed for passing • Predominantly native materials 	<ul style="list-style-type: none"> • Tread continuous and discernible, but narrow and rough • Single lane with minor allowances constructed for passing • Typically native materials 	<ul style="list-style-type: none"> • Tread continuous and obvious • Single lane, with allowances constructed for passing where required by traffic volumes in areas with no reasonable passing opportunities available • Native or imported materials 	<ul style="list-style-type: none"> • Tread wide and relatively smooth with few irregularities • Single lane, with allowances constructed for passing where required by traffic volumes in areas with no reasonable passing opportunities available • Double lane where traffic volumes are high and passing is frequent • Native or imported materials • May be hardened 	<ul style="list-style-type: none"> • Tread wide, firm, stable, and generally uniform • Single lane, with frequent turnouts where traffic volumes are low to moderate • Double lane where traffic volumes are moderate to high • Commonly hardened with asphalt or other imported material
Obstacles	<ul style="list-style-type: none"> • Obstacles common, naturally occurring, often substantial and intended to provide increased challenge • Narrow passages; brush, steep grades, rocks and logs present 	<ul style="list-style-type: none"> • Obstacles may be common, substantial, and intended to provide increased challenge • Blockages cleared to define route and protect resources • Vegetation may encroach into trailway 	<ul style="list-style-type: none"> • Obstacles may be common, but not substantial or intended to provide challenge • Vegetation cleared outside of trailway 	<ul style="list-style-type: none"> • Obstacles infrequent and insubstantial • Vegetation cleared outside of trailway 	<ul style="list-style-type: none"> • Obstacles not present • Grades typically < 8%

Trail Class* Examples



Trail terminology?

- From our user survey



Signs and Trail Standards

Developing signs to support additional guidelines

EAST TIGER MOUNTAIN BIKE TRAIL SYSTEM

EASY TRAILING



EASIER



1-WAY TRAIL

- Intermediate terrain
- Some unavoidable obstacles and technical features
- No alternate routes
- Ride at your own risk



Violators are subject to civil or criminal prosecution under WAC 332.52 and other applicable laws.


To report illegal activities, call toll free 1-855-883-8368
Email: forestwatch@dnr.wa.gov
For emergencies, call 9-1-1



11-3-12(15) Mountain Bike-TrailSign


EAST TIGER MOUNTAIN BIKE TRAIL SYSTEM

NW TIMBER




EASIER

YIELD TO




**2-WAY TRAIL:
DOWNHILL YIELDS
TO CLIMBING TRAVEL**

- Easier terrain
- Some unavoidable obstacles and technical features
- No alternate routes
- Ride at your own risk



Violators are subject to civil or criminal prosecution under WAC 332.52 and other applicable laws.

To report illegal activities, call toll free 1-855-883-8368
Email: forestwatch@dnr.wa.gov
For emergencies, call 9-1-1



11-3-12(15) Mountain Bike-TrailSign

EAST TIGER MOUNTAIN BIKE TRAIL SYSTEM

EAST SUMMIT



DIFFICULT



**1-WAY TRAIL
DOWNHILL ONLY**

- Intermediate terrain
- Some unavoidable obstacles and technical features
- No alternate routes
- Ride at your own risk



Violators are subject to civil or criminal prosecution under WAC 332.52 and other applicable laws.

To report illegal activities, call toll free 1-855-883-8368
Email: forestwatch@dnr.wa.gov
For emergencies, call 9-1-1



11-3-12(15) Mountain Bike-TrailSign

EAST TIGER MOUNTAIN BIKE TRAIL SYSTEM

PREDATOR (UPPER)



EXPERTS ONLY



**1-WAY TRAIL
DOWNHILL ONLY**

- Extreme terrain
- Unavoidable extreme obstacles and technical features
- Bikes only.
- No alternate routes
- Ride at your own risk

**NO HIKING
NO HORSES**



Violators are subject to civil or criminal prosecution under WAC 332.52 and other applicable laws.

To report illegal activities, call toll free 1-855-883-8368
Email: forestwatch@dnr.wa.gov
For emergencies, call 9-1-1



11-3-12(15) Predator-Upper