

TEANAWAY COMMUNITY FOREST ROAD MAINTENANCE, ABANDONMENT AND DECOMMISSIONING



WASHINGTON STATE DEPT OF
**NATURAL
RESOURCES**



Washington Department of
FISH and WILDLIFE

BACKGROUND

- TEANAWAY AREA HAS A HIGH ROAD DENSITY (ROAD MILES PER SQUARE MILE) DUE TO PAST HARVEST AND MANAGEMENT ACTIVITIES
- IMPLEMENTATION OF ROAD MAINTENANCE AND ABANDONMENT PLANNING (RMAP)
 - COMPLETION DEADLINE OF DECEMBER OF 2021
- ROAD ISSUES
 - HISTORIC ROADS IN VALLEY BOTTOMS ADJACENT TO STREAMS
 - MOST ROADS NATIVE SURFACE – NO SURFACE ROCK
 - HIGHLY ERODIBLE CLAY AND SANDY SOILS
 - IDENTIFIED POTENTIAL SEDIMENT DELIVERY POINTS (WARSEM)



MAINTENANCE, ABANDONMENT AND DECOMMISSIONING (MAD) OBJECTIVES

- INTEGRATE WITH OTHER OBJECTIVES OF THE TEANAWAY COMMUNITY FOREST MANAGEMENT PLAN
- MAINTAIN A SUSTAINABLE ROAD NETWORK
 - MEETS NEEDS FOR FUTURE MANAGEMENT AND ACCESS
 - MEETS NEEDS FOR HABITAT GOALS
 - MEETS NEEDS FOR FUTURE RESTORATION PROJECTS
- MITIGATE ROAD RELATED RESOURCE ISSUES
- REDUCE ROAD RELATED MAINTENANCE COSTS
- REDUCE ROAD DENSITY (ROAD MILES PER SQUARE MILE)
- PROVIDE SAFE TRANSPORTATION NETWORK
- PROVIDE APPROPRIATE PUBLIC ACCESS
 - CONSIDER TRAIL SYSTEM VS. ROADS
 - PROVIDE ACCESS TO CURRENT TRAILHEADS AND EASEMENTS TO UNITED STATES FOREST SERVICE OWNERSHIP & OTHERS



MAD PROCESS

○ ROAD SYSTEM EVALUATION

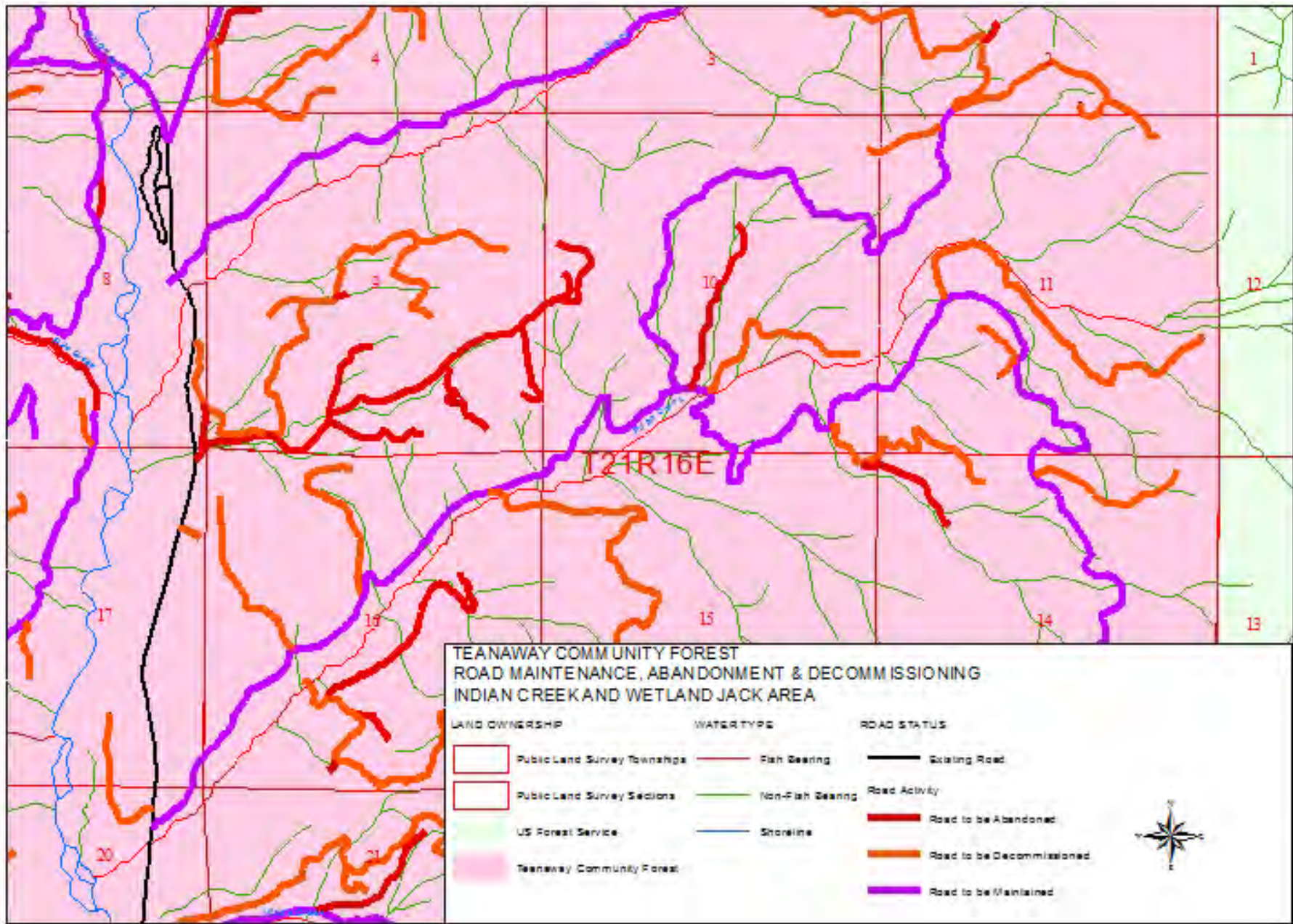
- PRIORITIZATION
 - RESOURCE ISSUES
 - PRIORITY DRAINAGES/BASINS
 - HABITAT NEEDS
- LONG TERM ROAD MANAGEMENT OPTIONS
 - REMAIN ACTIVE (MAINTAIN)
 - ROAD NEEDED FOR REGULAR MANAGEMENT & FIRE ACCESS
 - ABANDON
 - ROAD NO LONGER NEEDED FOR MANAGEMENT OR HAS A RESOURCE ISSUE (INCLUDES FUTURE RE-ROUTES)
 - DECOMMISSION
 - ROAD NEEDED FOR LONG-TERM (BUT NOT REGULAR) MANAGEMENT
- EVALUATE ROAD MAINTENANCE AND ABANDONMENT (RMAP) INVENTORY DATA
- EVALUATE EXISTING ROAD SYSTEM FOR MANAGEMENT NEEDS
 - FACTORS TO CONSIDER
 - NEXT PLANNED HARVEST(S)
 - HARVESTING METHOD
 - RESTORATION WORK
 - ROAD LOCATION
 - ROAD CONDITION
 - POTENTIAL RESOURCE IMPACTS
 - MAINTENANCE COSTS
 - ROAD DENSITY
 - EASEMENTS
 - PUBLIC ACCESS
 - NEIGHBORS



MAD PROCESS

- PLAN IMPLEMENTATION
 - ROAD PRIORITIZATION
 - RESOURCE ISSUES
 - PRIORITY DRAINAGES
 - TIMING WITH OTHER PROJECTS
 - PUBLIC USE ISSUES
 - REVISE PLANNED WORK IN GIS DATA BASE
 - WORK METHOD
 - TIE TO OTHER PROJECTS SUCH AS RESTORATION
 - INTERNAL HEAVY EQUIPMENT CREWS
 - PUBLIC WORKS CONTRACTS
 - PERFORMED BY OTHER COOPERATORS
- REPORTING
 - UPDATE GIS DATA BASE
 - ANNUAL ACCOMPLISHMENT REPORTS
 - RMAP REPORT SUBMITTED ANNUALLY TO FOREST PRACTICES
- REVISION AND ADAPTIVE MANAGEMENT
 - CONSIDER AND INCORPORATE COMMENTS AND SUGGESTIONS
 - ALIGNS WITH MANAGEMENT OBJECTIVES
 - FEASIBLE
 - ECONOMICAL
 - REASONABLE





ROAD STATISTICS

○ EXISTING ROAD MILEAGES

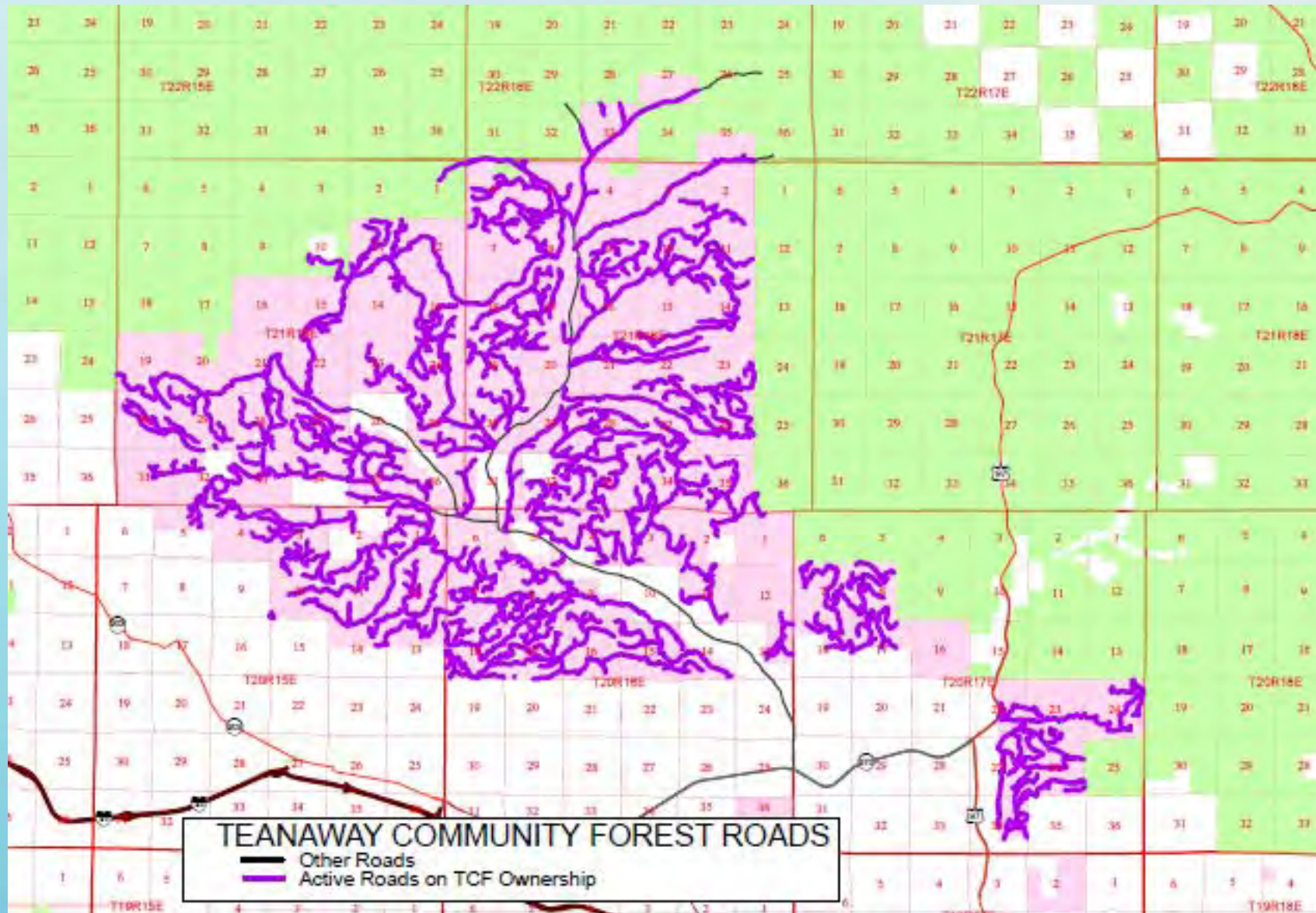
- ACTIVE ROAD – 339 MILES
- ABANDONED OR DECOMMISSIONED ROAD – 69 MILES
- ACTIVE ROAD DENSITY - **3.9** MILES PER SQUARE MILE

○ ROAD MILES AFTER PROPOSED MAD IMPLEMENTATION

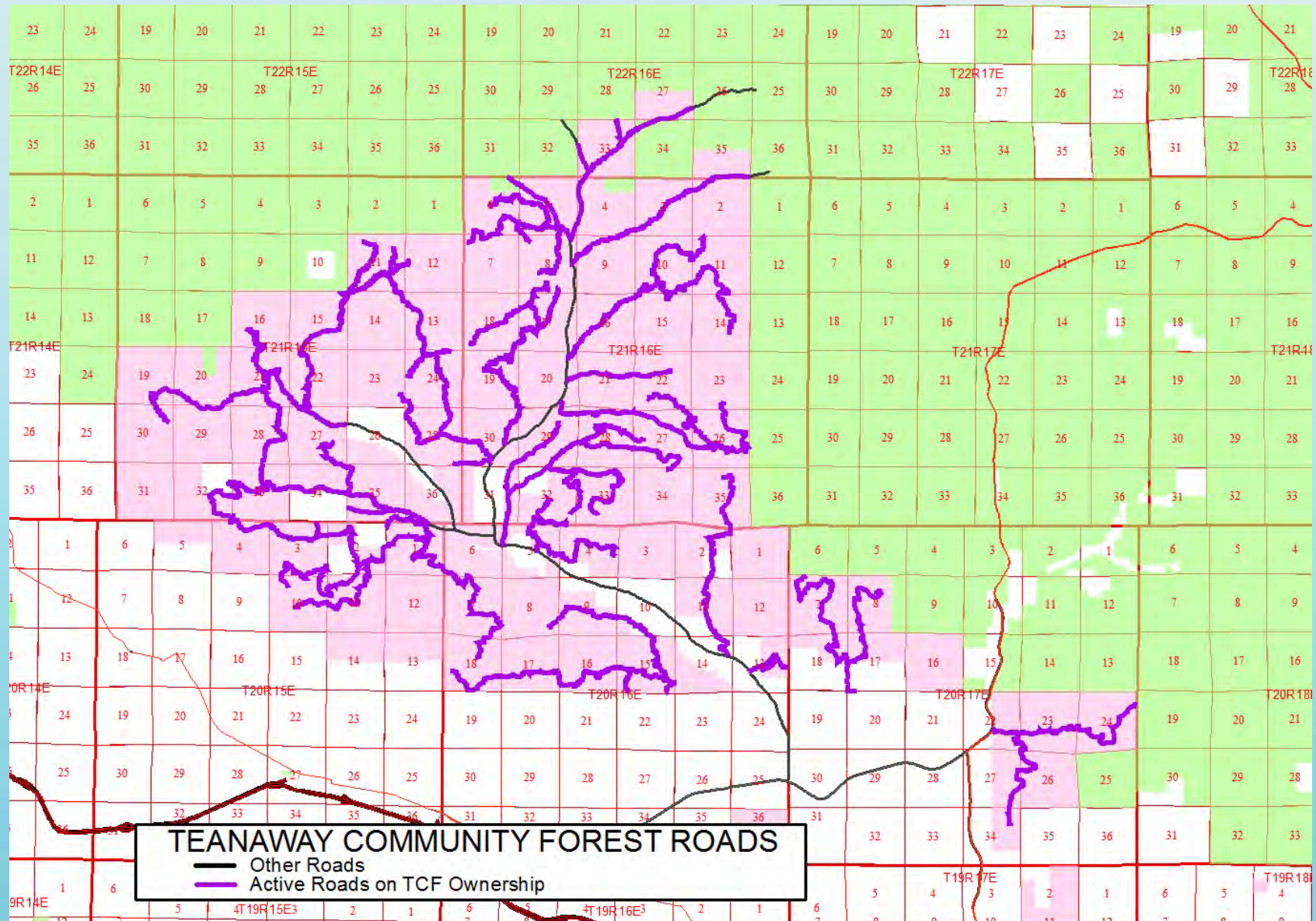
- ACTIVE ROAD – 134 MILES
- ABANDONED OR DECOMMISSIONED ROAD – 274 MILES
- ROAD DENSITY – **1.6** MILES PER SQUARE MILE



TCF ROADS CURRENTLY ACTIVE



TCF ROADS PROPOSED TO BE ACTIVE



TCF PUBLIC ACCESS ROADS

