



Public Auction Sale of Timber

January 2024

Book 1055



IMPORTANT NOTICES

Natural Resources (DNR)

Governmental Regulatory Actions or Orders

The purchaser assumes the risk of liabilities related to regulatory actions or orders by any government agency that may affect the operability of these timber sales. Such regulatory actions or orders include, but are not limited to, actions taken pursuant to the State Forest Practices Act, Chapter 76.09 RCW, and the Federal Endangered Species Act, 16 U.S.C. §§ 1531-1544. Please see timber sale contract clauses G-066 and G-220 for further information.

Threatened and Endangered Species

DNR cannot verify the presence or absence of any threatened or endangered species that may affect the operability of the timber sale. Purchasers must rely on their own assessments.

Export Restricted

All timber purchased under these state DNR contracts shall not be exported outside of the United States until the timber has been processed. Purchasers shall not violate any of the prohibitions in WAC 240-15-015 (relating to the prohibitions on export and substitution), WAC 240-15-025 (relating to reporting requirements), and WAC 240-15-030 (relating to enforcement). If purchasers knowingly violate WAC 240-15-015, purchasers shall be barred from bidding on or purchasing export restricted timber as provided.

Cover photos

Timber Sales in this book are from state trust lands, managed to help build K-12 public schools, state universities, colleges, prisons, mental hospitals, the state Capitol; and to support local services in many counties.

Top right: Landscape view of DNR-managed trust lands in western Washington. Photo courtesy of DNR staff.

Second down right: Timber harvest operations on DNR-managed trust land. Photo courtesy of DNR staff.

Third down right: Log truck loaded with timber harvested from DNR-managed trust land. Photo courtesy of DNR staff.

Bottom right: Marcus Whitman Elementary School in Richland Washington. Photo courtesy of Richland School District.

Bottom middle: Storytime at the Shelton Timberland Library. Photo courtesy of Timberland Regional Library.

Bottom left: Douglas-fir seedlings growing at the Webster Nursery. Many of these seedlings will be planted following timber harvest on DNR-managed trust lands. Photo courtesy of DNR staff.

Table of Contents

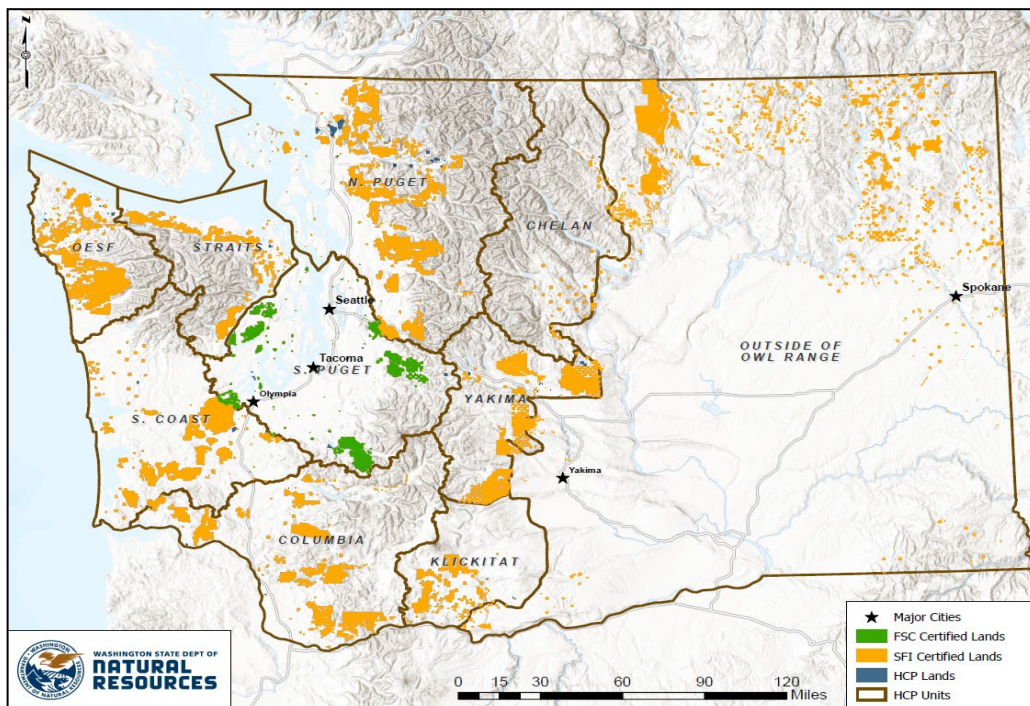
Certification Opportunities for DNR Timber Purchasers	Page 3
Bidder/Purchaser Auction and Bidding Information	Page 5
Summary of All Sales Being Offered in January	Page 9
Lyre Lyre	Page 11
Sassafras	Page 17
M Hornet	Page 23
Q South Sacheen	Page 31
Bald Balcony	Page 37
Rocky Top	Page 41
Loomis Trail	Page 45
Sealed Bid Form and Instructions	Page 49
Statewide Bid Bond and Instructions	Page 53
Timber Sale per Sale Bid Bond and Instructions	Page 57
Log Sort Sealed Bid Form and Instructions	Page 59

Forest Management Certification Opportunities for DNR Timber Purchasers

Forest management certification is a voluntary process that identifies and recognizes forests grown to an approved set of standards and demonstrates environmentally responsible, socially beneficial, and economically viable management practices. To achieve certification and maintain it, certificate holders such as DNR must successfully undergo annual audits conducted by external, accredited certifying bodies. In the U.S., there are two recognized forest certification systems for public land: the [Forest Stewardship Council®](https://www.fsc.org/) (FSC® C012959) and the [Sustainable Forestry Initiative®](https://www.forests.org/) (SFI®-00071).

To learn more about chain-of-custody and/or about becoming a “program participant” in the FSC program, please visit us.fsc.org/en-us.

To learn more about chain-of-custody and/or about becoming a “program participant” in the SFI program, please visit forests.org.



To learn more, visit DNR's [Forest Certification](#) webpage or contact:

Product Sales & Leasing Division

Product Sales Section

Steve Teitzel, Operations, steve.teitzel@dnr.wa.gov

Forest Resources Division

HCP and Scientific Consultation Section

Allen Estep, Asst. Division Mgr., allen.estep@dnr.wa.gov



The mark of
responsible forestry



DNR's FSC certificate # is: BV-FM/COC-080501

DNR's SFI certificate # is: BVC-SFIFM-018227

Washington State Department of Natural Resources (DNR)

Bidder's/Purchaser's Inspection of Sale Area and Forest Products

Acreage estimates and volume estimates contained within each timber notice of sale and each timber sale contract are made only for administrative and identification purposes. Except as expressly provided by the timber sale contract, the purchaser shall be responsible for paying the entire purchase price, even if the actual acreage or timber volume varies from the estimated quantity or volume shown.

All prospective bidders have the opportunity and are expected to inspect the sale area and the forest products located thereon. Bidders shall not rely on any representations by the State including, but not limited to, acreage estimates, volume estimates, appraisal or pre-bid documentation. The successful bidder/purchaser will further warrant that they have entered the timber sale contract without any reliance upon the DNR's volume estimates, acreage estimates, appraisals, pre-bid documentation, or any other representation by the DNR.

Any timber sale contract arising out of these public auctions will require the successful purchaser to warrant that they are entering the timber sale contract based solely upon their own judgment of the value of the forest products, formed after their own examination and inspection of both the timber sale area and the forest products being sold.

Exclusion and Disclaimer of Warranties

The PARTIES AGREE that the IMPLIED WARRANTIES OF MERCHANTABILITY AND FITNESS FOR A PARTICULAR PURPOSE, and ALL OTHER WARRANTIES EXPRESS OR IMPLIED, ARE EXCLUDED from this transaction, and shall not apply to the goods sold. For example, THE FOLLOWING SPECIFIC MATTERS ARE NOT WARRANTED, and are EXCLUDED from this transaction:

- A. ***The merchantability of the forest products.*** The use of the term "merchantable" in any document is not intended to vary the foregoing.
- B. ***The condition of the forest products.*** All forest products will be conveyed "AS IS."
- C. ***The acreage contained within any sale area.*** Any acreage descriptions appearing in the timber notices of sale, timber sale contract, timber sale map or other documents are estimates only, provided solely for administrative and identification purposes.
- D. ***The volume, quality, or grade of the forest products.*** The descriptions of the forest products to be conveyed are estimates only, made solely for administrative and identification purposes.
- E. ***The correctness of any soil or surface conditions, presale construction appraisals, investigations, and all other pre-bid documents prepared by or for the State.*** These documents have been prepared for the State's appraisal purposes only.
- F. ***That the sale area is free from threatened or endangered species, or their habitat.*** The State is not responsible for any interferences with forestry operations that result from the presence of any threatened or endangered species, or the presence of their habitat, within the sale area.
- G. That the forestry operations to be performed under this contract will be free from regulatory actions by governmental agencies. The State is not responsible for actions to enforce regulatory laws, such as the Washington Forest Practices Act (Chapter 76.09 RCW), taken by the Department of Natural Resources or any other agency that may affect the operability of these timber sales.
- H. Items contained in any other documents prepared for or by the State.

Please also see timber sale contract clause G-060 for further information.

BIDDING PROCEDURES FOR TIMBER AUCTIONS

The general requirements that follow are a part of all Timber Notices of Sale to be auctioned by the Department of Natural Resources (DNR).

General Information

The State reserves the right to waive minor irregularities and the right to reject any or all bids.

- A. This book contains the timber notices of sale and maps for each timber sale scheduled to be auctioned. More specific information can be obtained by contacting the appropriate region office at the number listed on the back cover of this book. Sales may be added to each monthly auction by the Department which are not included in this publication. This publication is not updated following original production.
- B. The timber notice of sale is a summary of sale information. For more specific information, interested parties are encouraged to view the Auction Packets on www.dnr.wa.gov. Auction Packets contain **DRAFT** copies of the timber notice of sale, map, contract, road plan, cruise data, precruise and cruise narrative, and other associated documents.
- C. Timber sale auction packets may also be obtained at no charge for individual sales by visiting the appropriate region office.
- D. Timber sale contracts contain extensive terms and conditions that will be binding upon successful high bidders. Each bidder should carefully review all terms contained in the appropriate **DRAFT** timber sale contract prior to bidding on a sale, and should review the final contract prior to signing. **DRAFT** timber sale contracts are contained in the auction packets and are available upon request at the respective region office.
- E. Sales advertised in this book are subject to the Board of Natural Resources approval before they will be sold. The Board meets and approves sales approximately six weeks prior to auction.
- F. The State does not guarantee the accuracy of any information contained herein pertaining to particular sales. Therefore, all prospective purchasers are expected to make their own independent inspections and appraisals prior to bidding.
- G. If any conflict exists between the information in the Timber Notice of Sale, timber sale map, sale auction packets and that in the timber sale contract, the signed contract will prevail.
- H. Purchasers must pay the Forest Excise Tax on the bid price, permanent road construction costs, and other considerations. The tax rate is 5% without the EARR credit and 4.2% with the credit. For more information contact the Department of Revenue, Forest Tax Section at 1-800-548-8829.
- I. **All sales are subject to confirmation by the DNR under RCW 79.15.120.**
- J. **Within 30 days of sale confirmation, the apparent high bidder will provide to the State the Performance Security specified on each Notice of Sale. The successful bidder also agrees to return a signed contract to the State within 30 days of confirmation.** Failure to provide a signed contract to the state within 30 days of confirmation may result in a loss of bidder's rights to the products sold and forfeiture of initial deposit moneys.
- K. Each DNR region office has information about sales offered in that region. For further information, contact the respective DNR region office. Region office addresses and telephone numbers appear on the back cover of this booklet.
- L. The purchaser assumes the responsibility for any costs associated with extra maintenance or repair levied by a county for any county road used by the purchaser.

Auction Time and Location

Auctions will start at 10:00 a.m. and close at 4:00 p.m. on the date and at the location specified in each Timber Notice of Sale.

Bidding Process

- A. All timber will be auctioned using the sealed bid method.
- B. Bids submitted on the day of auction must be in the bid box at the specified auction location before 10:00 a.m. The respective DNR region office must receive mailed bids by 4:30 p.m., on the last business day before the auction. Bidders assume all risk for the method of delivery.
- C. The DNR has the right to reject bid forms that are completed incorrectly. *All bid forms must have an original signature on behalf of the person or entity submitting the bid, and must be on the form provided in this booklet or a photocopy thereof. Revised documents are not permissible.* Bidding instructions are on the back of the Sealed Bid Form. A bid deposit must be included in the sealed bid envelope unless using a Timber Sale Statewide Bid Bond.
- D. All bids must include the completed Sealed Bid Form and bid deposit.
- E. Bids will be opened in each respective region in the order in which sales appear in the Public Auction Sale of Timber book (alphabetically by county and by agreement number). Sales added after the book is printed will be inserted to retain this order. Sort sales may be auctioned out of this sequence at the State's convenience.
- F. If a tie bid occurs, the names of the tie bidders will be placed in a hat and the successful bidder will be determined by a drawing.
- G. Opportunities to Withdraw Bids:
For all sales offered on a stumpage basis only, the apparent high bidder on a particular sale will have the option of withdrawing additional sealed bids submitted for any remaining sales to be auctioned. The apparent high bidder must exercise this option within two minutes after the apparent high bidder is announced. This option is not available for sales offered on a delivered basis.

Eligibility to Bid

The following criteria must be met in order to bid on State timber sales:

- 18 years of age (or have a co-signer who meets the eligibility requirements)
- Licensed to do business in the State of Washington
- Eligible to bid on Export Restricted timber
- Authorized to submit bids

Authorized Representatives

Company officers or company authorized representatives may bid on State sales, sign State documents, or sign checks. A list of authorized representatives and their specific authorities must be submitted, in writing, to the Department of Natural Resources, Product Sales and Leasing Division, P.O. Box 47014, Olympia, Washington, 98504-7014, ten days in advance of the auction. *A company owner or officer must sign this submittal.*

Bid Deposits

- A. Required bid deposits are listed on each Timber Notice of Sale.
- B. Bid deposits must be in the form of cash, certified check, cashiers' check, money order or bid bond.
- C. Bid bonds may be either a Timber Sale Per Sale Bid Bond or a Timber Sale Statewide Bid Bond.
- D. All bid deposits shall be submitted by the person or entity submitting the bid and made payable to the Department of Natural Resources. **Third party deposits will not be accepted.**

Timber Sale Per Sale Bid Bonds

- A. The Per Sale Bid Bond shall guarantee payment of the bid deposit **within ten days of auction.**
- B. The balance between the bid bond and the Initial Deposit payment is due **by 4:30 p.m., on the day of auction.**
- C. Additional forms and instructions for a Per Sale Bid Bond are available at any DNR region office.

Timber Sale Statewide Bid Bond

- A. Statewide Bid Bonds shall guarantee payment of the Initial Deposit on any statewide timber sale while the bond is in effect.
- B. The Statewide Bid Bond must be received by the Department of Natural Resources, Product Sales and Leasing Division, P.O. Box 47014, Olympia, Washington, 98504-7014, ten days in advance of the auction date. The bond shall be in the amount of \$150,000.00.
- C. Successful bidders using a Statewide Bid Bond must pay the total Initial Deposit payment (10% of the total bid price) **by 4:30 p.m., on the day of the auction.**
- D. A Statewide Bid Bond cannot be used to secure the Initial Deposit payment due the day of auction.
- E. Additional forms and instructions for a statewide bid bond are available at any DNR region office.

Payments

The initial deposit for a sale is 10% of the total bid value as submitted by the apparent high bidder (25% if the bidder is a defaulter as defined under WAC 332-140-300) and never less than \$5,000.00 for lump sum sales. For Lump Sum sales appraised at less than \$5,000.00, the entire bid value is due on day of auction.

- A. Apparent high bidders using cash, certified check, cashiers' check or money order as a bid deposit must pay the total Initial Deposit amount by 4:30 p.m. on auction day.
- B. Apparent high bidders using a Timber Sale Per Sale Bid Bond as a bid deposit must pay the difference between the bid deposit and the total initial deposit by 4:30 p.m., on the day of auction. The bid bond amount must be replaced with a certified check, cashiers' check, bank draft, cash, money order, or wire transfer within ten days of the auction.
- C. Apparent high bidders using a Timber Sale Statewide Bid Bond must pay the entire Initial Deposit amount by 4:30 p.m. on the day of auction.
- D. All payments must be in the form of a certified check, cashiers' check, bank draft, cash, money order or wire transfer.



Summary Report of All Sales for the Month of January 2024

Board Sales

<u>County</u>	<u>Region</u>	<u>Agree #</u>	<u>FSC® Sale Name</u>	<u>Volume</u>	<u>Value</u>
Clallam	Olympic	104811	LYRE LYRE	2,167	\$541,000.00
Cowlitz	Pacific Cascade	105887	SASSAFRAS	4,898	\$1,018,000.00
Lewis	Pacific Cascade	104741	M HORNET	5,593	\$1,851,000.00
Pend Oreille	Northeast	105143	Q SOUTH SACHEEN	3,073	\$977,000.00
Skagit	Northwest	104331	BALD BALCONY	3,054	\$619,000.00
Skamania	Pacific Cascade	105934	ROCKY TOP	6,537	\$1,595,000.00
Total				25,322	\$6,601,000.00

Region Sales

<u>County</u>	<u>Region</u>	<u>Agree #</u>	<u>FSC Sale Name</u>	<u>Volume</u>	<u>Value</u>
Whatcom	Northwest	104584	LOOMIS TRAIL	684	\$220,000.00
Total				684	\$220,000.00



Scan with your smartphone or tablet to go to the January 2024 timber auction page



TIMBER NOTICE OF SALE

SALE NAME: LYRE LYRE

AGREEMENT NO: 30-104811

AUCTION: January 24, 2024 starting at 10:00 a.m., Olympic Region Office, Forks, WA

COUNTY: Clallam

SALE LOCATION: Sale located approximately 5 miles west of Joyce, WA

PRODUCTS SOLD AND SALE AREA:

All timber, except trees marked with a band of blue paint or bounded out by leave tree area tags; bounded by timber sale boundary tags, red paint ringed take trees(fence line), PA-J-3010 in Unit 1; timber sale boundary tags, timber type change, PA-J-3000, PA-J-3100 in Unit 2; timber sale boundary tags, red paint ringed take trees, PA-J-3100 Unit 5, timber sale boundary tags, Joyce-Piedmont Rd. Unit 6; timber sale boundary tags, red ringed take trees, Joyce-Piedmont Rd. Unit 7; timber sale boundary tags, PA-J-3000 Unit 8; timber sale boundary tags, red ringed take trees Unit 9.

All timber bounded by right of way boundary tags in Unit 10.

All forest products above located on part(s) of Sections 1 all in Township 30 North, Range 9 West, Sections 34 and 35 all in Township 31 North, Range 9 West, W.M., containing 110 acres, more or less.

CERTIFICATION: This sale is certified under the Sustainable Forestry Initiative® program Standard (cert no: BVC-SFIFM-018227)

ESTIMATED SALE VOLUMES AND QUALITY:

Table with columns: Species, Avg Ring DBH Count, Total MBF, and MBF by Grade (1P, 2P, 3P, SM, 1S, 2S, 3S, 4S, UT). Rows include Douglas fir, Red alder, Spruce, Redcedar, Grand fir, Hemlock, Maple, and Sale Total.

MINIMUM BID: \$541,000.00

BID METHOD: Sealed Bids

PERFORMANCE SECURITY:

\$100,000.00

SALE TYPE: Lump Sum

EXPIRATION DATE: October 31, 2026

ALLOCATION: Export Restricted

BID DEPOSIT: \$54,100.00 or Bid Bond. Said deposit shall constitute an opening bid at the appraised price.

HARVEST METHOD: 100% Ground Based equipment. 30' Equipment Limitation Zone on all typed water unless approved by the Contract Administrator. Forest products sold under this contract shall be harvested and removed using ground based equipment. Non-tethered self-leveling tracked equipment is limited to sustained slopes of 65 percent and less. Other



TIMBER NOTICE OF SALE

ground based equipment is limited to tracked equipment on sustained slopes that are 45 percent and less. Rubber tired skidders are restricted unless approved by the Contract Administrator. Authority to use other equipment or to operate outside the equipment specifications detailed above must be approved in writing by the State.

No equipment will be allowed in the areas that are shown on the maps as Equipment Exclusion Zones (ELZ) and marked in the field with pink and red flagging in Unit 2. Trees within the ELZ shall be felled in a manner approved by the Contract Administrator. Falling and Yarding will not be permitted from October 1 to May 31 unless authorized in writing by the Contract Administrator or on weekends, State recognized holidays, or from 8:00pm to 6:00am.

ROADS: 46.81 stations of required construction. 7.30 stations of required reconstruction. 5.00 stations of optional construction. 185.75 stations of required prehaul maintenance. 7.30 stations of decommissioning. Timber haul, rock haul, pre-haul maintenance, reconstruction, pit development, and Road construction will not be permitted from November 1 to April 30 unless authorized in writing by the Contract Administrator on weekends, State recognized holidays, or from 8:00pm to 6:00am

Purchaser shall provide an excavator with operator for up to 12 hours of exploration of rock and other related work as directed by the Contract Administrator.

Marbled Murrelet Timing Restriction - PA-I-2600 (Stations 0+00 to 14+00) Timber felling, road work or operation of heavy equipment performed during the marbled murrelet nesting season (April 1st through September 23rd), is restricted to, two hours after sunrise to two hours before sunset. This does not apply to hauling timber, rock, or equipment. The hauling of forest products will not be permitted from October 1 to May 31 unless authorized in writing by the Contract Administrator.

ACREAGE DETERMINATION

CRUISE METHOD: Sale acreage was 100% GPS'd. Sale units were cruised using a variable plot sample.

FEES: There will be a \$360.00 reimbursement fee required of the purchaser of this sale paid to the state for the obtainment of two Clallam County Road Approach Permits already acquired by DNR. \$36,839.00 is due on day of sale. \$9.00 per MBF is due upon removal. These are in addition to the bid price.

SPECIAL REMARKS: There are locked bollards on the PA-J-3100 on the entrances from the PA-J-3000 and Gossett Road, and a locked gate on the PA-J-3000 Road-contact the Olympic Region Dispatch Center at 360-374-2800 to obtain a AA1 key.

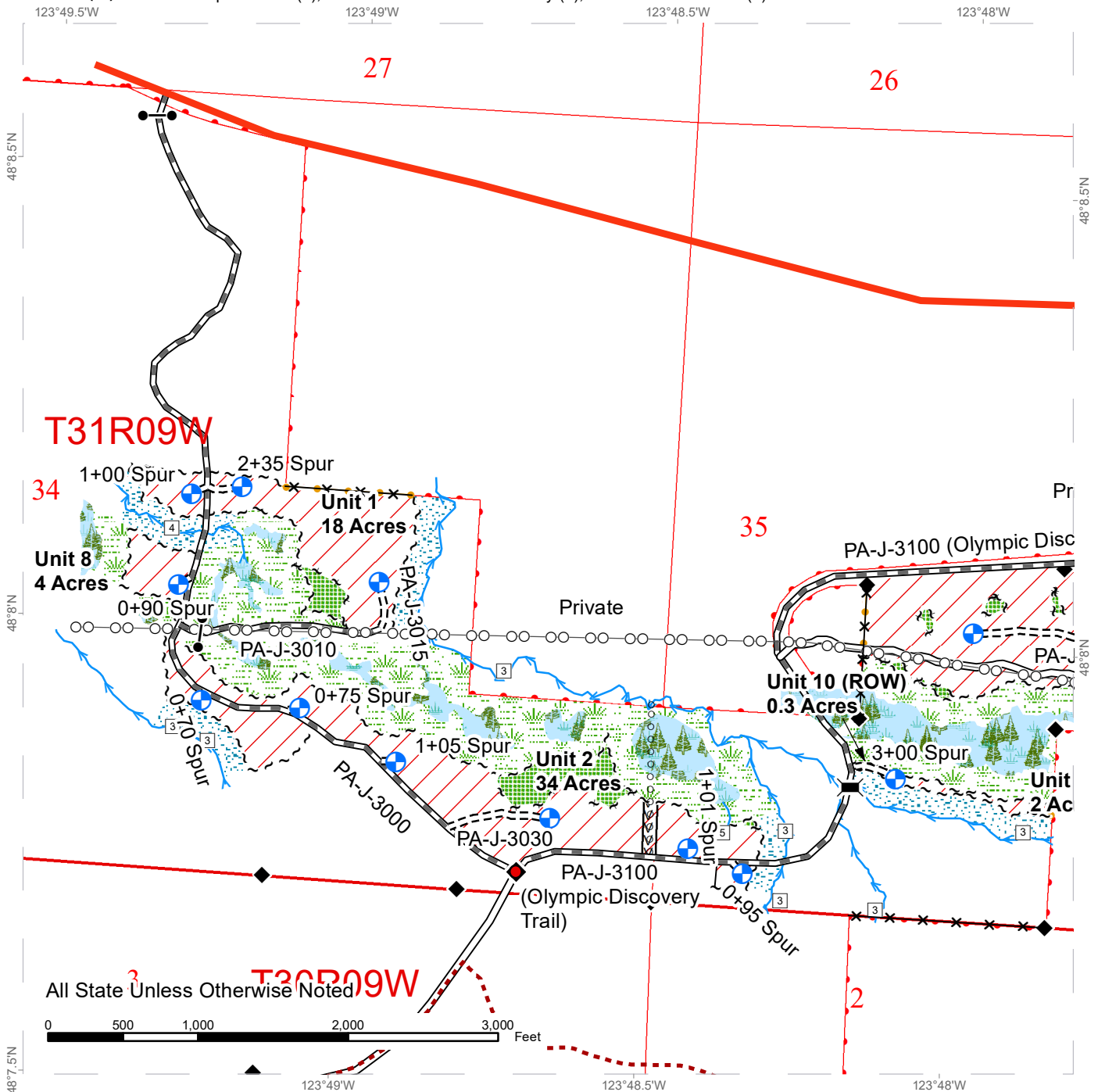
Purchaser shall immediately repair all fence damage resulting from operations on this sale to an equal or better condition than existed at the time of sale.

There are Extreme Hazard Abatement requirements for this sale-see contract for details.

TIMBER SALE MAP

SALE NAME: LYRE LYRE
AGREEMENT #: 30-104811
TOWNSHIP(S): T30R9W, T31R9W
TRUST(S): Capitol Grant (7), Common School and Indemnity (3), State Forest Transfer (1)

REGION: Olympic Region
COUNTY(S): Clallam
ELEVATION RGE: 280-700'



~ ~ ~ Sale Boundary Tags	✕ ✕ Fence	Stream	DNR Managed Lands
— Timber Type Change	○ ○ Power Lines	□ Stream Type	/ / Variable Retention Harvest
— Designated Equipment Trail	○ ○ Waterline	* Stream Type Break	▨ Leave Tree Area
~ ~ ~ Leave Tree Tags	Existing Road	◆ Survey Monument	▨ Riparian Mgt Zone
~ ~ ~ Right of Way Tags	Highway 112	● Gate (AA1)	▨ Forested Wetland
Take / Removal Trees	= Δ = Optional Pre-Haul Maintenance	◆ Bollard (AA1)	▨ Wetland Mgt Zone
Property Line	- - - Optional Construction	Structure	▨ Equipment Exclusion Zone
--- Olympic Discovery Trail	Required Pre-Haul Maintenance	Bridge	
	- - - Required Construction	Proposed Landing	
	Required Reconstruction		

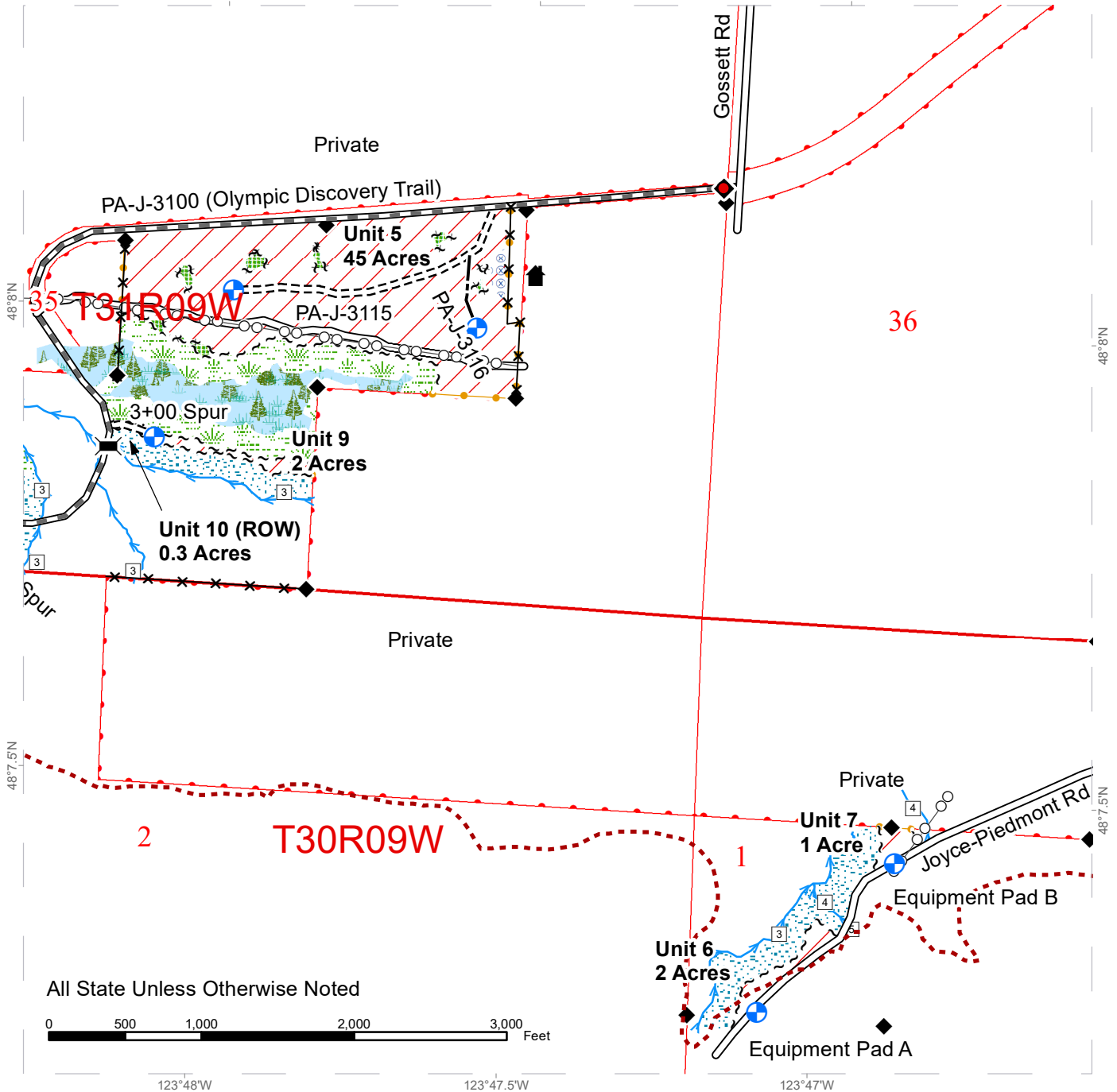


TIMBER SALE MAP

SALE NAME: LYRE LYRE
AGREEMENT #: 30-104811
TOWNSHIP(S): T30R9W, T31R9W
TRUST(S): Capitol Grant (7), Common School and Indemnity (3), State Forest Transfer (1)

REGION: Olympic Region
COUNTY(S): Clallam
ELEVATION RGE: 280-700'

123°48'W 123°47.5'W 123°47'W



All State Unless Otherwise Noted



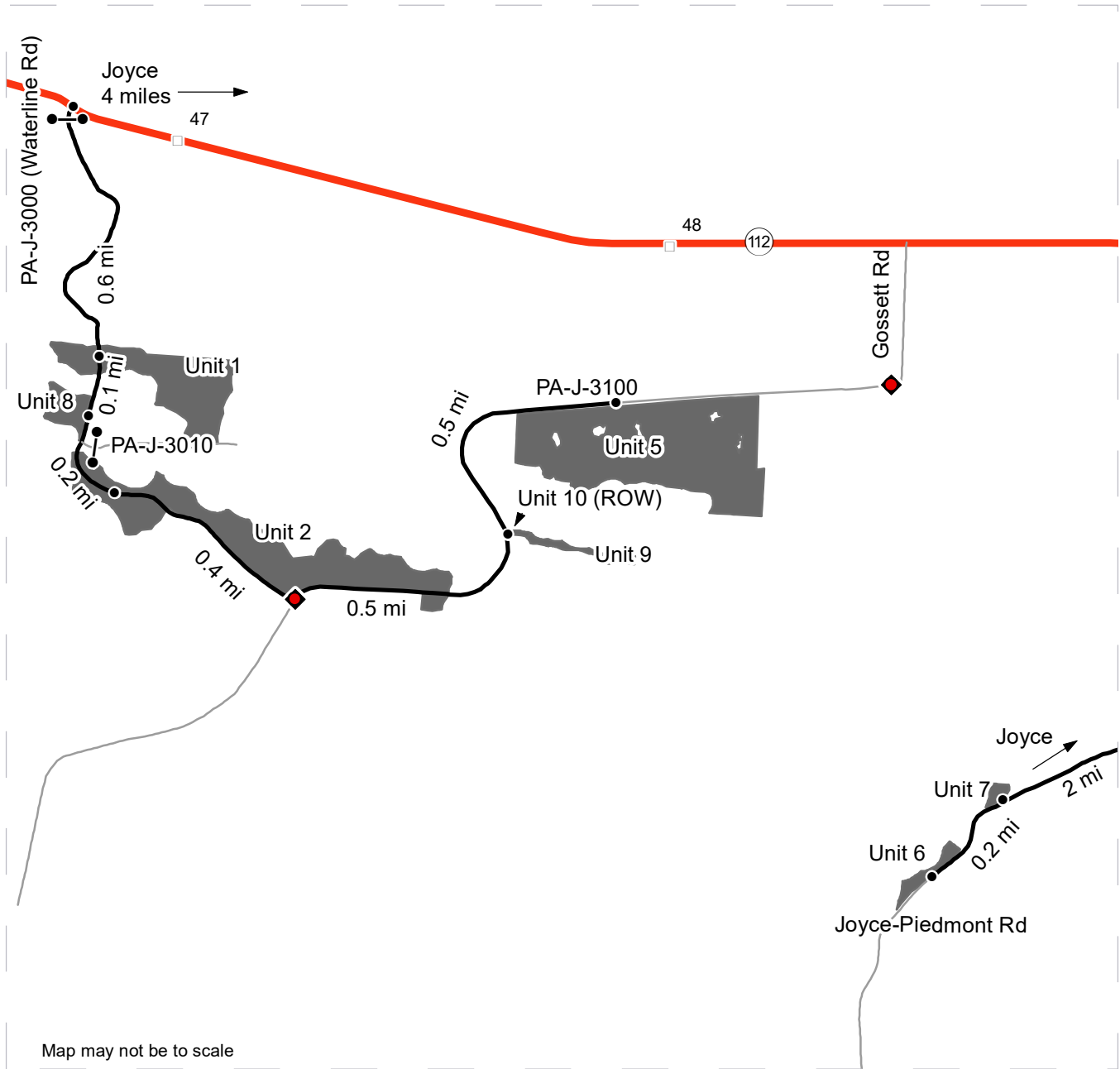
~ ~ ~ Sale Boundary Tags	✕✕ Fence	Stream	DNR Managed Lands
— Timber Type Change	○ ○ Power Lines	□ Stream Type	Variable Retention Harvest
— Designated Equipment Trail	○ ○ Waterline	* Stream Type Break	Leave Tree Area
~ ~ ~ Leave Tree Tags	Existing Road	◆ Survey Monument	Riparian Mgt Zone
~ ~ ~ Right of Way Tags	Highway 112	● Gate (AA1)	Forested Wetland
Take / Removal Trees	Optional Pre-Haul Maintenance	◆ Bollard (AA1)	Wetland Mgt Zone
Property Line	Optional Construction	Structure	Hazard Abatement Area
Olympic Discovery Trail	Required Pre-Haul Maintenance	Bridge	
	Required Construction	Proposed Landing	
	Required Reconstruction		



DRIVING MAP

SALE NAME: LYRE LYRE
 AGREEMENT#: 30-104811
 TOWNSHIP(S): T30R9W, T31R9W
 TRUST(S): Capitol Grant (7), Common School and Indemnity (3), State Forest Transfer (1)

REGION: Olympic Region
 COUNTY(S): Clallam
 ELEVATION RGE: 280-700'



Map may not be to scale

<ul style="list-style-type: none"> Timber Sale Unit Milepost Markers Distance Indicator Gate (AA1) Bollard (AA1) Highway Haul Route Other Road 	<p>DRIVING DIRECTIONS</p> <p>Units 1, 2, 5, and 8-10: From Joyce, head west 4 miles and turn south onto Waterline Rd (PA-J-3000), proceed through the gate (AA1).</p> <p>Unit 1, 2 and 8: Drive south on Waterline Rd for 0.6 miles to reach unit 1. From unit 1, continue driving for 0.1 miles to reach unit 8. Drive for 0.2 more miles from unit 8 to reach Unit 2.</p> <p>Units 5, 9 and 10 : From the Waterline Rd gate, drive south for 1.3 miles and turn left onto PA-J-3100, unlock the bollard with an AA1.</p> <p>Unit 9 &10: From the bollard, drive east on the PA-J-3100 for 0.5 miles. Unit 10 is on the right. Walk through unit 10 to reach unit 9.</p> <p>Unit 5: From unit 10, continue 0.5 miles northeast on the PA-J-3100 to reach Unit 5.</p> <p>Units 6 & 7: From Joyce, head southwest on Joyce Piedmont Rd for 2 miles. Unit 7 is on the right. From unit 7, continue 0.2 miles to reach Unit 6 on the right.</p>
--	---



TIMBER NOTICE OF SALE

SALE NAME: SASSAFRAS

AGREEMENT NO: 30-105887

AUCTION: January 25, 2024 starting at 10:00 a.m., COUNTY: Cowlitz
Pacific Cascade Region Office, Castle Rock, WA

SALE LOCATION: Sale located approximately 22 miles east of Toutle

PRODUCTS SOLD AND SALE AREA:

All timber, except leave trees bound by yellow "Leave Tree Area" tags, leave trees marked with blue paint, and all down timber greater than 55 inches diameter or existing 5 years prior to the day of sale, and snags bound by the following;

Unit 1, white "Timber Sale Boundary" tags with pink flagging, reprod, the 4250, and the 4257 roads;

Unit 2, white "Timber Sale Boundary" tags with pink flagging, reprod, the 5105, and the 5102B roads;

Unit 3, white "Timber Sale Boundary" tags with pink flagging, the 5100 and 5100I roads;

Units 4 and 5, white "Timber Sale Boundary" tags with pink flagging, the 5100, and the 5110 roads;

Units 6, 7 and 8, white "Timber Sale Boundary" tags with pink flagging, and the 5110 road;

5102B ROW, orange "Right-of-Way Boundary" tags with pink flagging;

5110 ROW, orange "Right of Way" tags with pink flagging

All forest products above located on part(s) of Sections 12, 13, 14, 22, 23 and 24 all in Township 9 North, Range 2 East, W.M., containing 121 acres, more or less.

CERTIFICATION: This sale is certified under the Sustainable Forestry Initiative® program Standard (cert no: BVC-SFIFM-018227)

ESTIMATED SALE VOLUMES AND QUALITY:

Table with columns: Species, Avg DBH, Ring Count, Total MBF, and MBF by Grade (1P, 2P, 3P, SM, 1S, 2S, 3S, 4S, UT). Rows include Douglas fir, Hemlock, Red alder, Redcedar, Maple, and Sale Total.

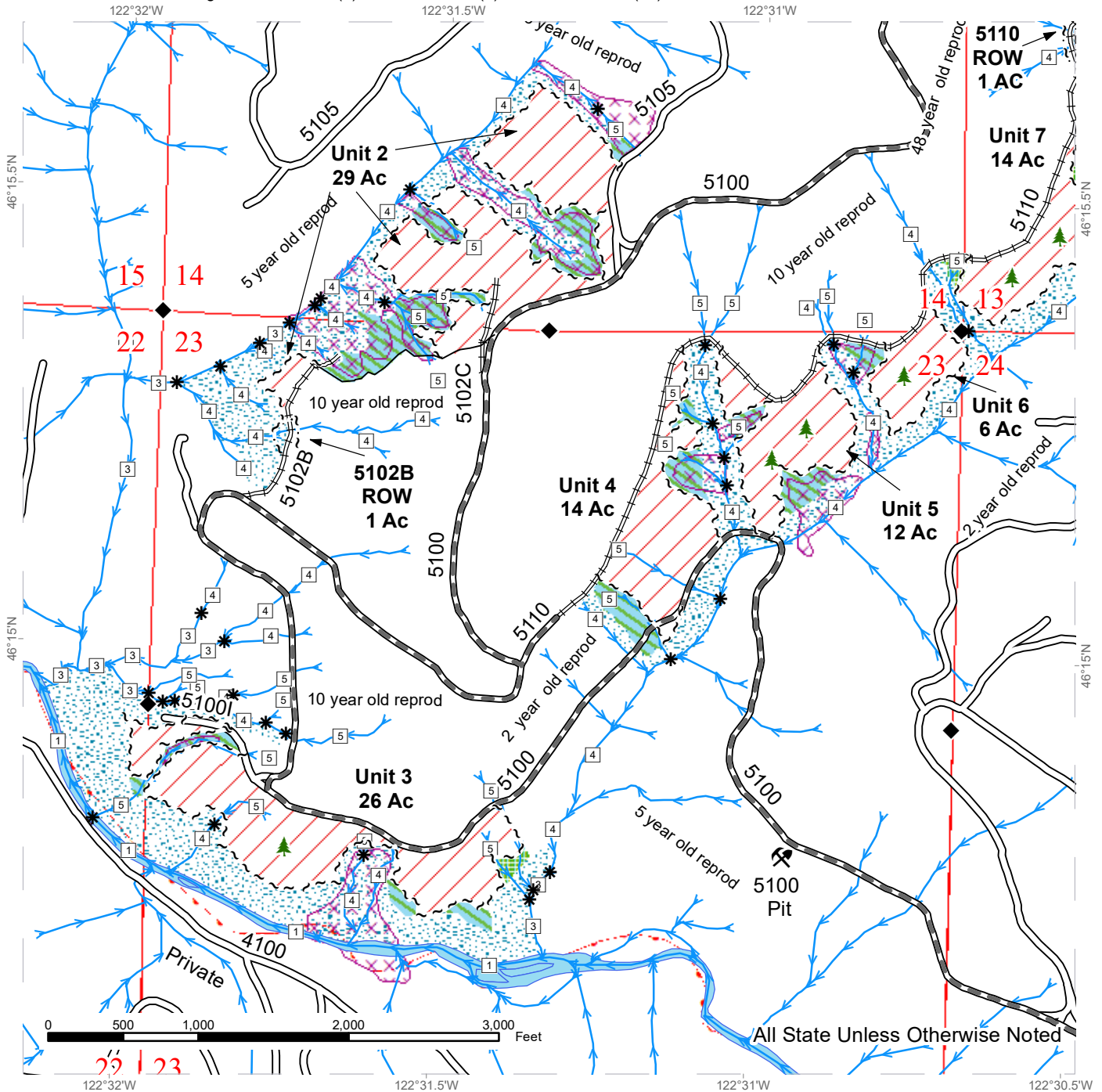
MINIMUM BID: \$1,018,000.00 BID METHOD: Sealed Bids

PERFORMANCE SECURITY: \$100,000.00 SALE TYPE: Lump Sum

TIMBER SALE MAP

SALE NAME: SASSAFRAS
AGREEMENT #: 30-105887
TOWNSHIP(S): T9R2E
TRUST(S): Agricultural School (4), Normal School (8), Scientific School (10)

REGION: Pacific Cascade Region
COUNTY(S): Cowlitz
ELEVATION RGE: 943-1880



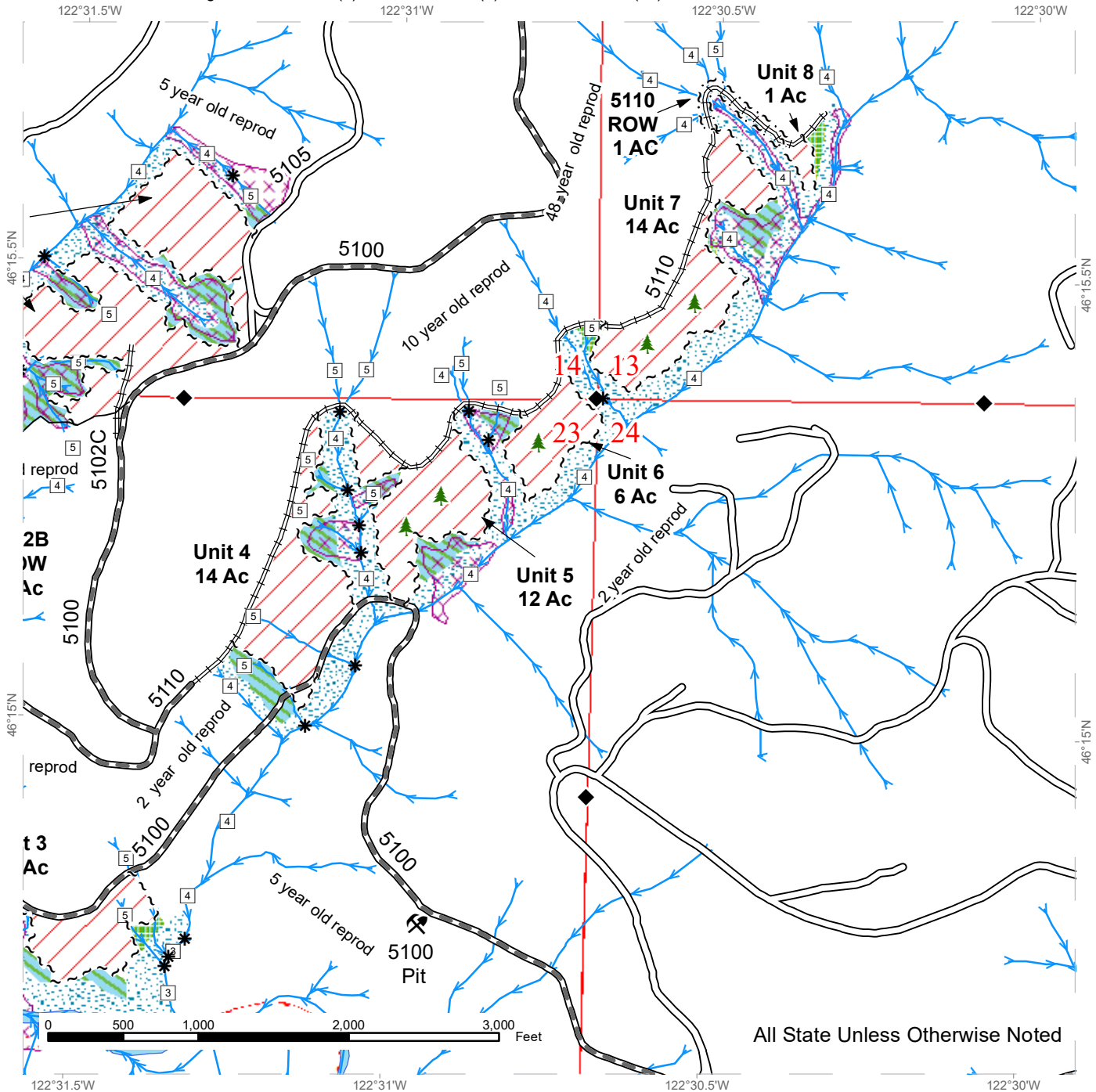
Variable Retention Harvest	Existing Roads	Streams
Non-Tradeable Leave Clump	Required Pre-Haul Maintenance	Stream Type
Leave Tree Area	Required Reconstruction	Stream Type Break
Riparian Mgt Zone	Sale Boundary Tags	Survey Monument
Potentially Unstable Slopes	Right of Way Tags	Leave Tree Area <1/4-acre
	Timber Type Change	Rock Pit



TIMBER SALE MAP

SALE NAME: SASSAFRAS
AGREEMENT #: 30-105887
TOWNSHIP(S): T9R2E
TRUST(S): Agricultural School (4), Normal School (8), Scientific School (10)

REGION: Pacific Cascade Region
COUNTY(S): Cowlitz
ELEVATION RGE: 943-1880



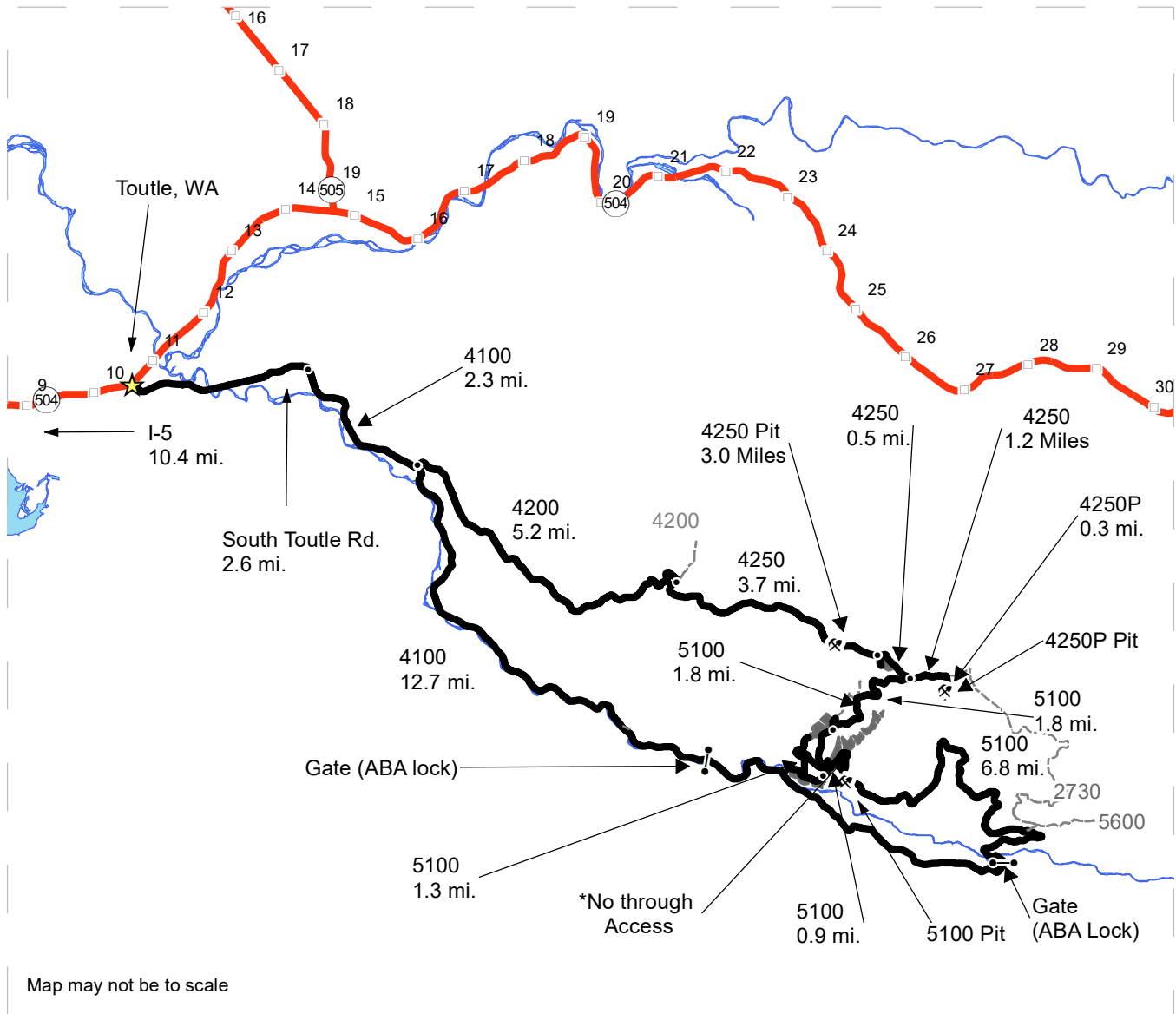
All State Unless Otherwise Noted

	Variable Retention Harvest		Existing Roads		Streams
	Non-Tradeable Leave Clump		Required Pre-Haul Maintenance		Stream Type
	Leave Tree Area		Required Reconstruction		Stream Type Break
	Riparian Mgt Zone		Sale Boundary Tags		Survey Monument
	Potentially Unstable Slopes		Right of Way Tags		Leave Tree Area <1/4-acre
			Timber Type Change		Rock Pit

DRIVING MAP

SALE NAME: SASSAFRAS
AGREEMENT#: 30-105887
TOWNSHIP(S): T9R2E
TRUST(S): Agricultural School (4), Normal School (8), Scientific School (10)

REGION: Pacific Cascade Region
COUNTY(S): Cowlitz
ELEVATION RGE: 943-1880



Map may not be to scale

<ul style="list-style-type: none"> Timber Sale Unit Haul Route Other Road View Only Route Milepost Markers Distance Indicator Gate Rock Pit Town 	<p><u>DRIVING DIRECTIONS:</u></p> <p>From Exit 49 off I-5, follow SR 504 east for 10.4 mi. Turn right onto South Toutle Rd and follow for 2.6 mi. to the 4100. Continue on the 4100 for 2.3 miles to the 4200 Junction.</p> <p>Unit 1: Turn onto the 4200 from the 4100. Follow for 5.2 miles and turn onto the 4250. Follow for 3.7 miles. The unit will be on the right.</p> <p>Unit 2: From Unit 1 continue on the 4250 for 0.5 miles and turn right onto the 5100. After 1.8 miles the unit will be on the right.</p> <p>Unit 3: From the 4100/4200 Junction continue on the 4100 for 12.7 miles then turn left onto the 5100. Continue on the 5100 for 7.7 miles. The Unit will be on the left.</p> <p>Units 4-8 and 5110 ROW: From Unit 3 Continue on the 5100 for 1.3 miles to the 5110 Intersection. All units will be on the right side of the 5110 reconstruction.</p> <p>5100 Pit. From the 4100/5100 Junction follow the 5100 for 6.8 miles. The pit will be on the left.</p> <p><i>*5100 crossing to be installed with the Malarkey TBS between now and Oct 31, 2024.</i></p>
---	---





TIMBER NOTICE OF SALE

SALE NAME: M HORNET

AGREEMENT NO: 30-104741

AUCTION: January 25, 2024 starting at 10:00 a.m., COUNTY: Lewis
Pacific Cascade Region Office, Castle Rock, WA

SALE LOCATION: Sale located approximately 5 miles south of Mossyrock, WA

PRODUCTS SOLD AND SALE AREA:

All timber, except leave trees bound by yellow "Leave Tree Area" tags, leave trees marked with blue paint, and all down timber existing 5 years prior to the day of sale, downed timber greater than 48 inches diameter, and snags bounded by the following:

Unit 1 and 2, white "Timber Sale Boundary" tags, pink flagging and private property line marked with white carsonite posts and pink flagging;

Unit 3, white "Timber Sale Boundary" tags and pink flagging;

Unit 4, white "Timber Sale Boundary" tags, pink flagging, the 7000, 7300 roads and private property line marked with white carsonite posts and pink flagging;

Unit 5 and 6 (ROW), orange "Right of Way" tags with orange flagging;

All forest products above located on part(s) of Sections 2, 11, 12 and 14 all in Township 11 North, Range 2 East, Sections 35 and 36 all in Township 12 North, Range 2 East, W.M., containing 229 acres, more or less.

CERTIFICATION: This sale is certified under the Sustainable Forestry Initiative® program Standard (cert no: BVC-SFIFM-018227)

ESTIMATED SALE VOLUMES AND QUALITY:

Table with columns: Species, Avg DBH, Ring Count, Total MBF, and MBF by Grade (1P, 2P, 3P, SM, 1S, 2S, 3S, 4S, UT). Rows include Douglas fir, Red alder, Hemlock, Maple, Redcedar, and Sale Total.

MINIMUM BID: \$1,851,000.00 BID METHOD: Sealed Bids

PERFORMANCE SECURITY: \$100,000.00 SALE TYPE: Lump Sum

EXPIRATION DATE: October 31, 2025 ALLOCATION: Export Restricted

BID DEPOSIT: \$185,100.00 or Bid Bond. Said deposit shall constitute an opening bid at the appraised price.



TIMBER NOTICE OF SALE

HARVEST METHOD: Cable, Cable-Assist, and Shovel. This sale is estimated to be 10 percent cable, 90 percent ground based harvesting. Ground based equipment is restricted to sustained slopes of 45 percent and less, Self-Leveling equipment is restricted to sustained slopes of 60 percent or less and shall operate only during dry soil conditions. See Clause H-140 for further harvest requirements. Falling and Yarding will not be permitted from November 1 to April 30 unless authorized in writing by the Contract Administrator.

ROADS: 18.73 stations of required construction. 75.67 stations of required reconstruction. 18.19 stations of optional construction. 40.60 stations of optional reconstruction. 277.20 stations of required prehaul maintenance. 15.80 stations of abandonment. Rock used in accordance with the quantities on the ROCK LIST may be obtained from the W-2020 Pit located in Section 3, T11N, R2E W.M. or the Beehive Pit located in Section 12, T11N, R2E W.M., on state land at no charge to the Purchaser.

Rock used in accordance with the quantities on the ROCK LIST may be obtained from the W-2020 Stockpile in Section 3, T11N, R2E, W.M., on state land at no charge to the Purchaser. See Road Plan for further details. All road work will not be permitted from October 1 to April 30 unless authorized in writing by the Contract Administrator. The hauling of forest products will not be permitted from November 1 to April 30 unless authorized in writing by the Contract Administrator.

ACREAGE DETERMINATION

CRUISE METHOD: The sale acres were determined by GPS. The sale area was cruised using a variable plot cruise method.

FEES: \$95,081.00 is due on day of sale. \$9.00 per MBF is due upon removal. These are in addition to the bid price.

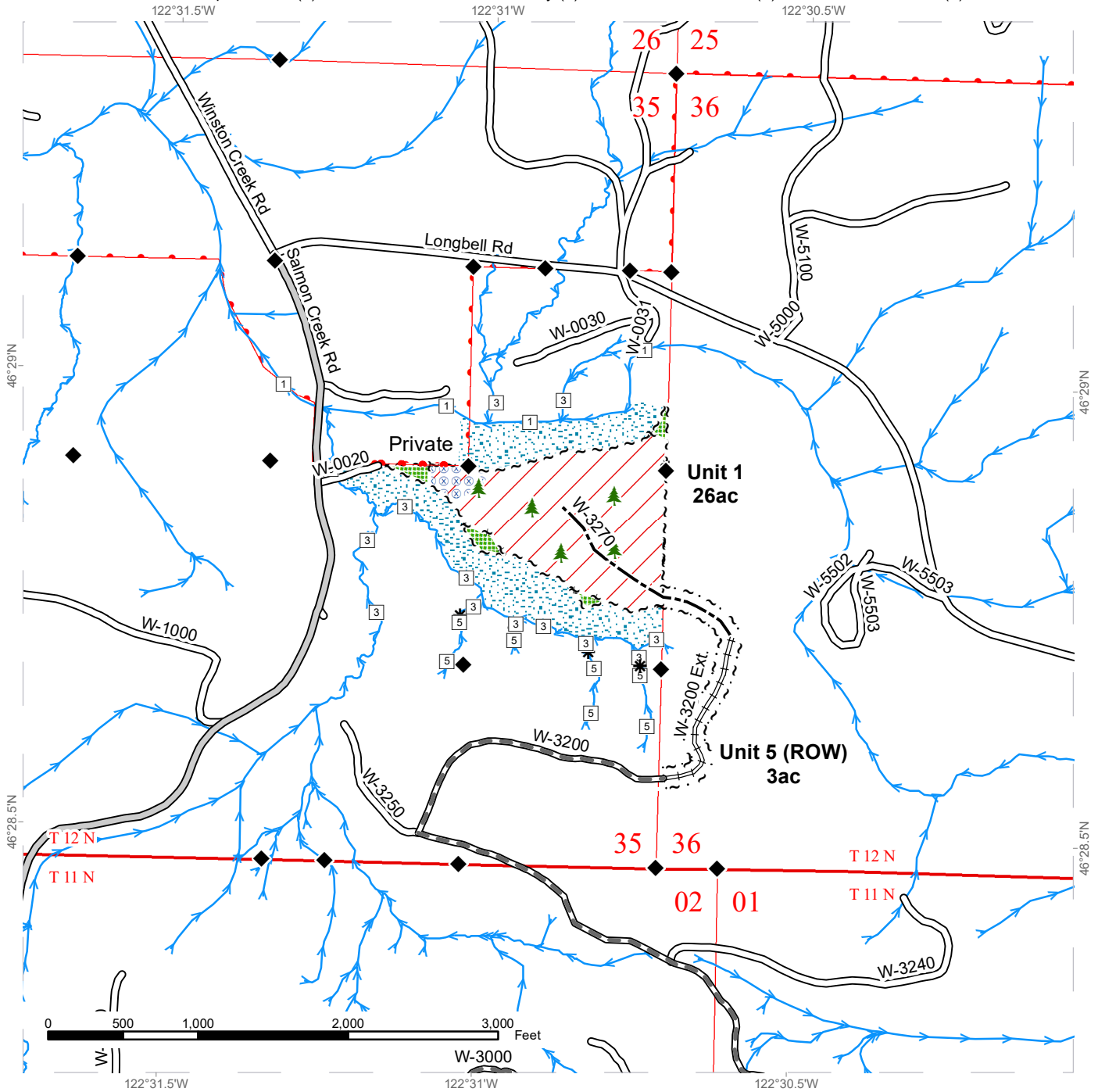
SPECIAL REMARKS: This sale contains approximately 103 MBF high quality 2 Saw DF, 200 MBF high quality 3 saw DF and 77 MBF of Poles. See Cruise for additional information.

Extreme Hazard Abatement required along the property line in Unit 1 and 2. See Timber Sale map and Clause S-020 for further details.

TIMBER SALE MAP

SALE NAME: M HORNET
AGREEMENT #: 30-104741
TOWNSHIP(S): T12R2E
TRUST(S): Capitol Grant (7), Common School and Indemnity (3), State Forest Purchase (2), State Forest Transfer (1)

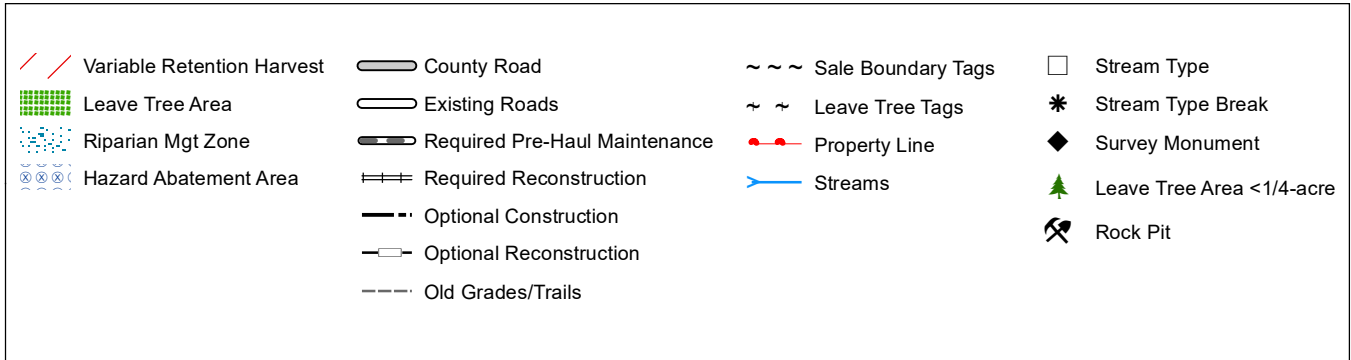
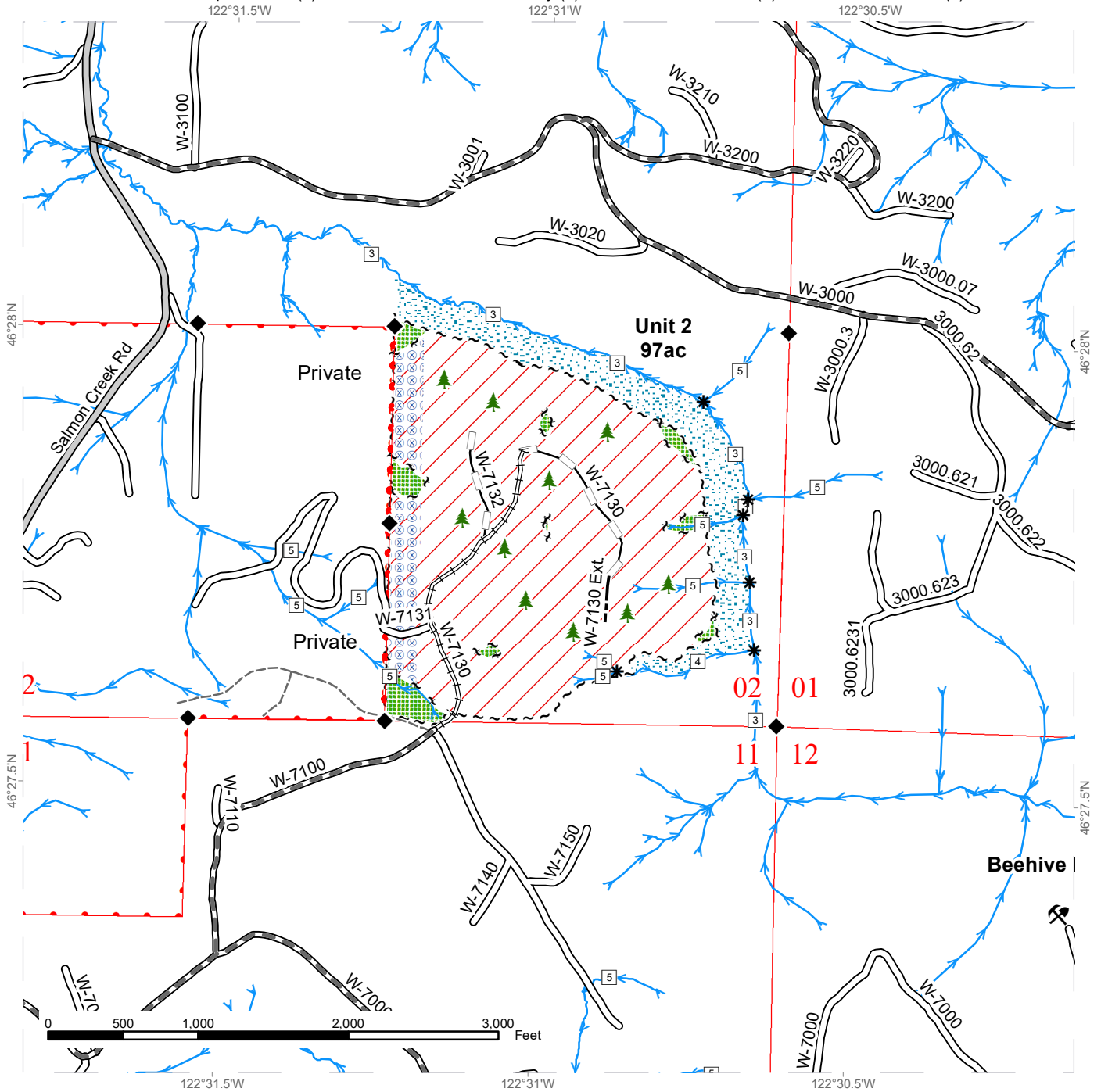
REGION: Pacific Cascade Region
COUNTY(S): Lewis
ELEVATION RGE: 640-1520



TIMBER SALE MAP

SALE NAME: M HORNET
AGREEMENT #: 30-104741
TOWNSHIP(S): T11R2E
TRUST(S): Capitol Grant (7), Common School and Indemnity (3), State Forest Purchase (2), State Forest Transfer (1)

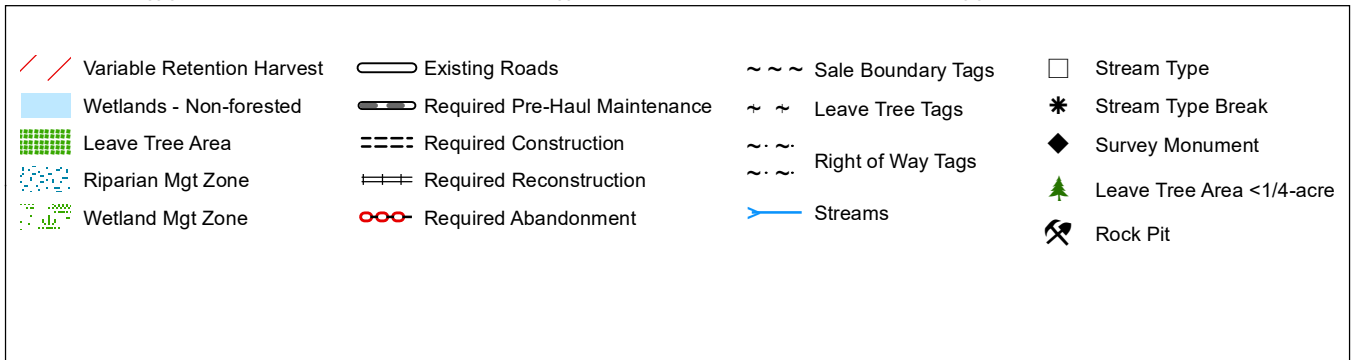
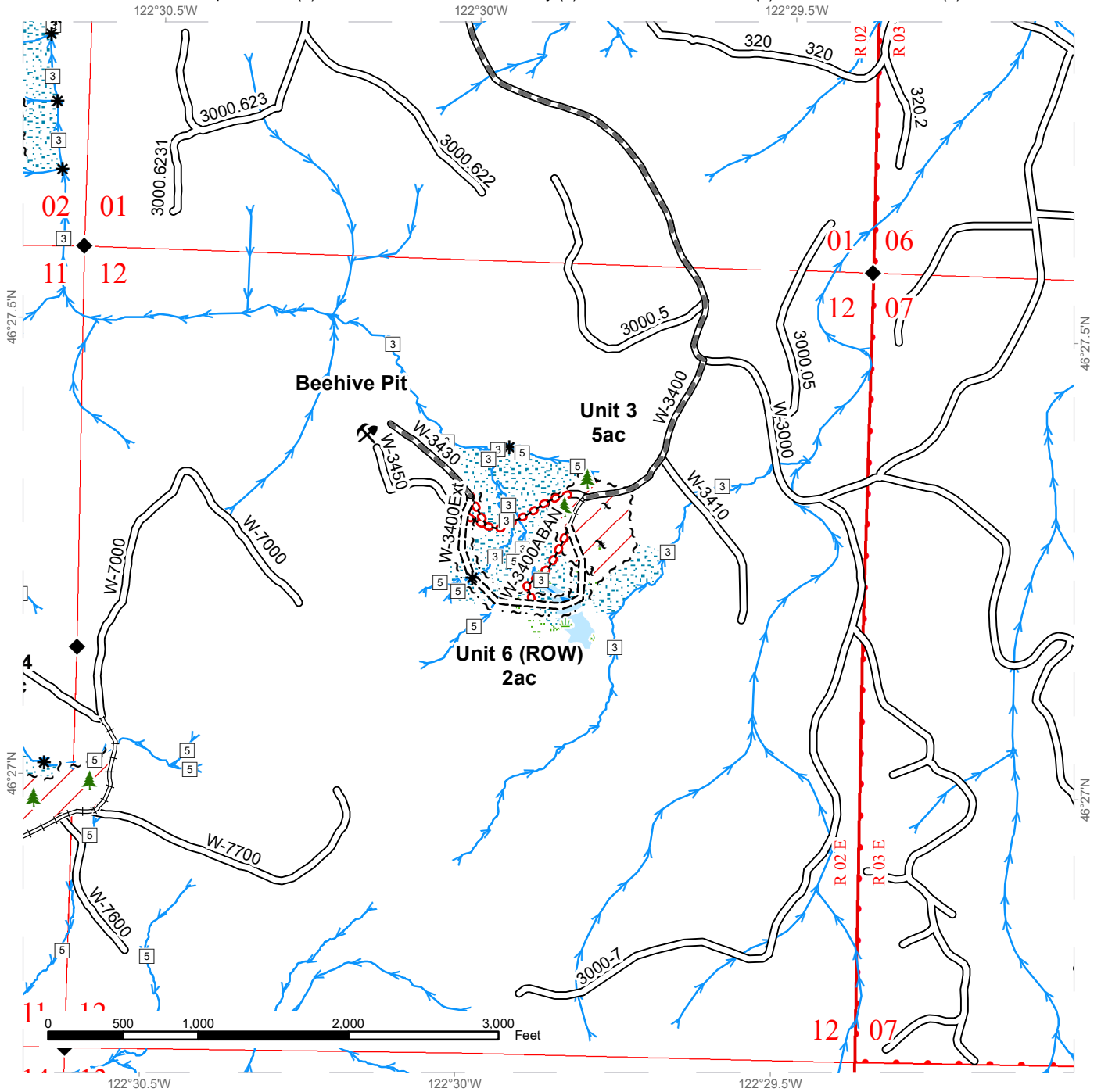
REGION: Pacific Cascade Region
COUNTY(S): Lewis
ELEVATION RGE: 640-1520



TIMBER SALE MAP

SALE NAME: M HORNET
AGREEMENT #: 30-104741
TOWNSHIP(S): T11R2E
TRUST(S): Capitol Grant (7), Common School and Indemnity (3), State Forest Purchase (2), State Forest Transfer (1)

REGION: Pacific Cascade Region
COUNTY(S): Lewis
ELEVATION RGE: 640-1520

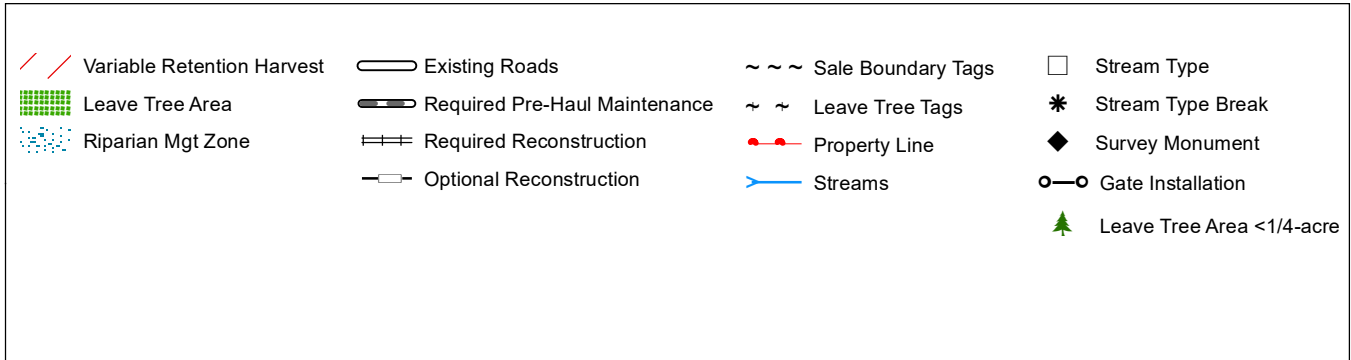
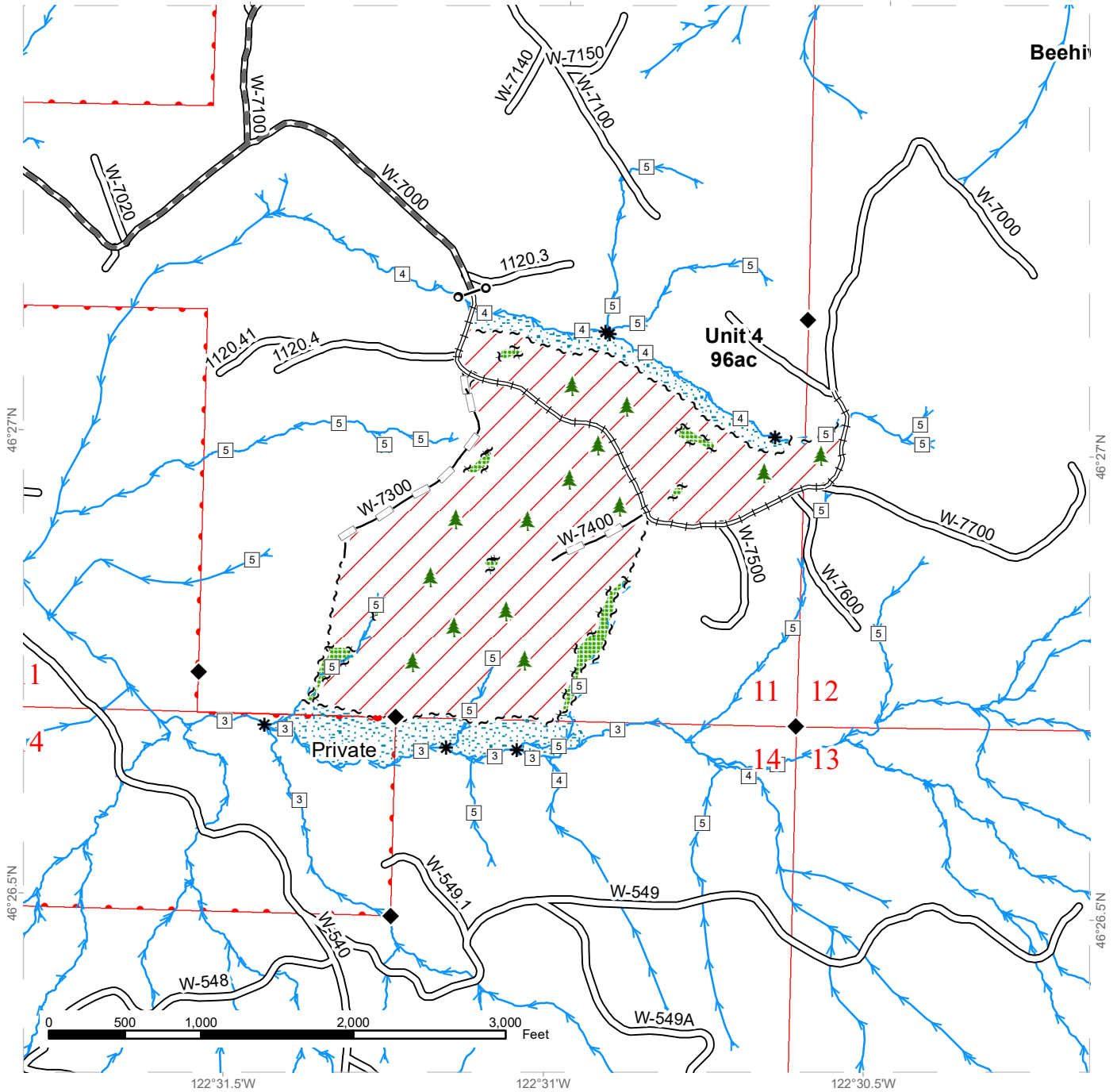


TIMBER SALE MAP

SALE NAME: M HORNET
AGREEMENT #: 30-104741
TOWNSHIP(S): T11R2E
TRUST(S): Capitol Grant (7), Common School and Indemnity (3), State Forest Purchase (2), State Forest Transfer (1)

REGION: Pacific Cascade Region
COUNTY(S): Lewis
ELEVATION RGE: 640-1520

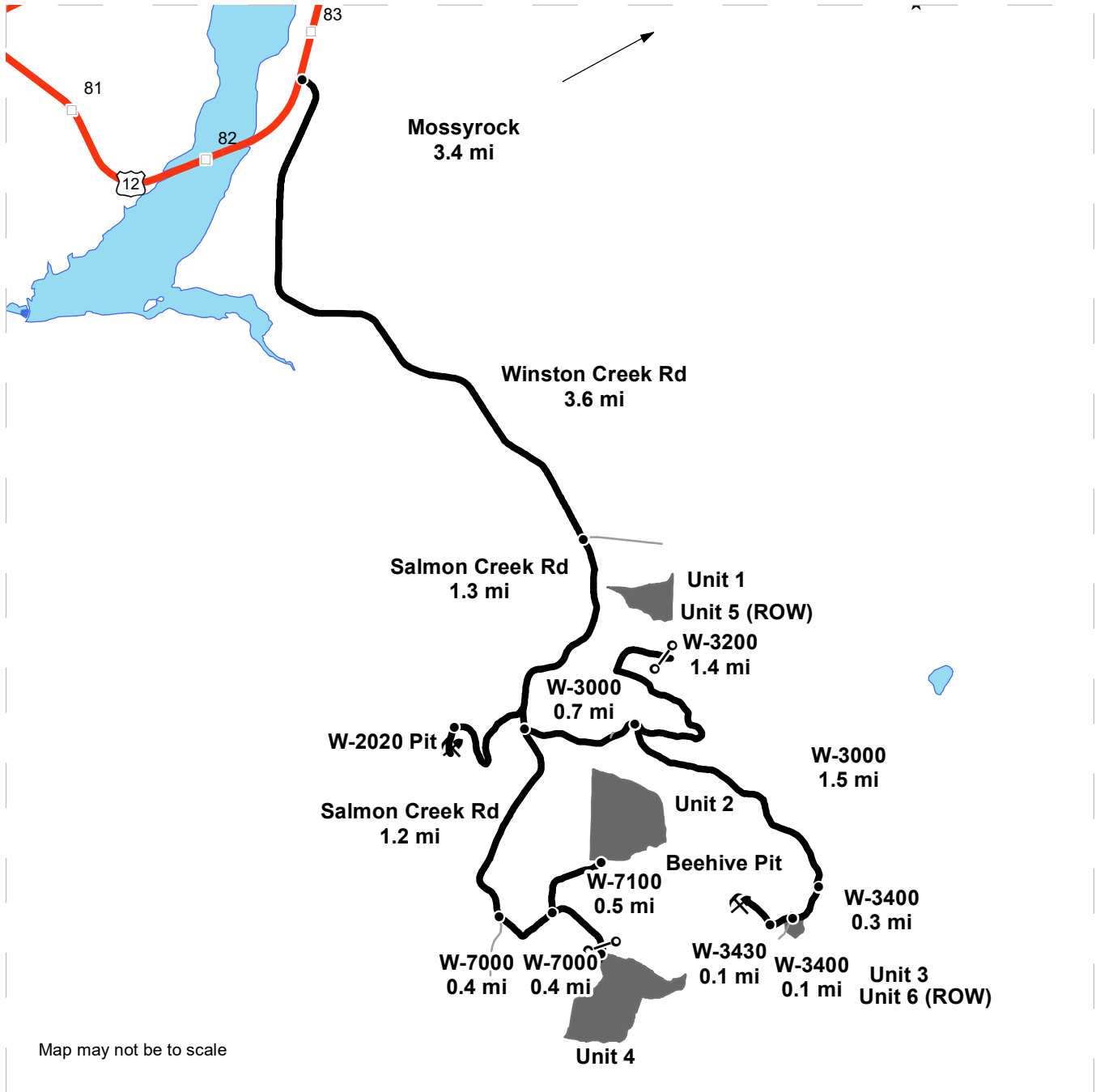
122°31.5'W 122°31'W 122°30.5'W



DRIVING MAP

SALE NAME: M HORNET
AGREEMENT#: 30-104741
TOWNSHIP(S): T11R2E, T12R2E
TRUST(S): Capitol Grant (7), Common School and Indemnity (3), State Forest Purchase (2), State Forest Transfer (1)

REGION: Pacific Cascade Region
COUNTY(S): Lewis
ELEVATION RGE: 640-1520



Map may not be to scale

	Timber Sale Unit
	Haul Route
	Other Road
	Milepost Markers
	HWY 12
	Distance Indicator
	Gate Installation
	Rock Pit

DRIVING DIRECTIONS:

Between MP 82 and 83 on Highway 12, turn east onto Winston Creek Rd. Follow Winston Creek Rd. for 3.6 miles. Continue along Salmon Creek Rd. for 1.3 miles. To reach Unit 1 and Unit 5 (ROW), turn left onto the W-3000 for 0.7 miles. Turn left onto the W-3200 for 1.4 miles. Unit 5 is the ROW to Unit 1. To reach Unit 3 and Unit 6 (ROW), continue along the W-3000 for 1.5 miles. Turn right onto the W-3400 for 0.3 miles. To reach Unit 2, continue along Salmon Creek Rd. for 1.2 miles. Turn left onto the W-7000 for 0.4 miles. Turn left onto the W-7100 for 0.5 miles. To reach Unit 4, continue along the W-7000 for 0.4 miles





TIMBER NOTICE OF SALE

SALE NAME: Q SOUTH SACHEEN

AGREEMENT NO: 30-105143

AUCTION: January 23, 2024 starting at 10:00 a.m., Northeast Region Office, Colville, WA

COUNTY: Pend Oreille

SALE LOCATION: Sale located approximately 12 miles south of Usk, WA.

PRODUCTS SOLD AND SALE AREA:

All green conifer species except for leave trees banded with blue paint in Units 1, 2, 3 and 4 bounded by white timber sale boundary tags; and all right of way timber bounded by orange right of way boundary tags.

All forest products above located on part(s) of Sections 36 all in Township 31 North, Range 43 East, W.M., containing 229 acres, more or less.

CERTIFICATION: This sale is certified under the Sustainable Forestry Initiative® program Standard (cert no: BVC-SFIFM-018227)

ESTIMATED SALE VOLUMES AND QUALITY:

Table with columns: Species, Avg DBH, Ring Count, Total MBF, and MBF by Grade (P, SM, 1S, 2S, 3S, 4S, 5S, 6S, UT). Rows include Douglas fir, Redcedar, Grand fir, Larch, Ponderosa pine, Lodgepole, Spruce, and Sale Total.

MINIMUM BID: \$977,000.00

BID METHOD: Sealed Bids

PERFORMANCE SECURITY:

\$100,000.00

SALE TYPE: Lump Sum

EXPIRATION DATE: October 26, 2025

ALLOCATION: Export Restricted

BID DEPOSIT: \$97,700.00 or Bid Bond. Said deposit shall constitute an opening bid at the appraised price.

HARVEST METHOD: Rubber tired skidder, Track skidder, and Ground based equipment. Falling and Yarding will not be permitted from February 1 to May 1 unless authorized in writing by the Contract Administrator due to spring breakup.

ROADS: 22.76 stations of required construction. 8.50 stations of required reconstruction. 225.99 stations of required prehaul maintenance. 22.76 stations of decommissioning. Road construction will not be permitted from November 15 to May 1 unless authorized in writing by the Contract Administrator due to frozen conditions and spring breakup. The hauling of forest products will not be permitted from February 1 to May 1 unless authorized in writing by the Contract Administrator due to spring breakup.



TIMBER NOTICE OF SALE

ACREAGE DETERMINATION

CRUISE METHOD: Acreage determined using GPS methods. Acreage shown above is net harvest acres in harvest units. Ponderosa pine and western redcedar: 8.0 - 17.5 inches dbh has a minimum top of 4.6 inch dib. All other species: 7.0 - 17.5 inches dbh has minimum top of 4.6 inch dib. All species 17.6 inches and greater dbh have a minimum top dib of 40% of dob at 16 feet or a 6 inch top whichever is greater.

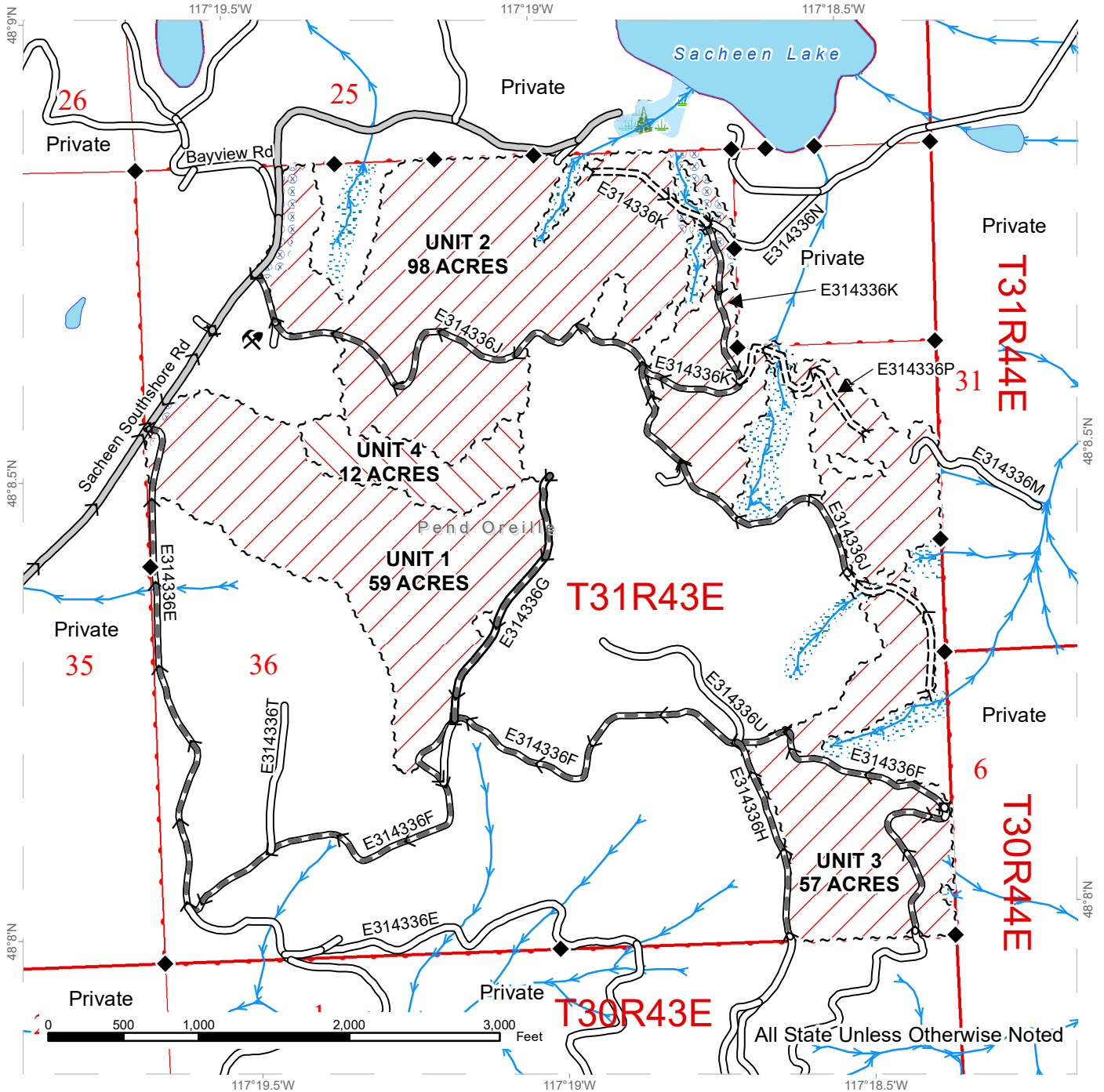
FEES: \$52,241.00 is due on day of sale. \$9.00 per MBF is due upon removal. These are in addition to the bid price.

SPECIAL REMARKS: All logging traffic and heavy equipment transport shall be prohibited on Fertile Valley road north of the intersection of Fertile Valley Road and Sacheen Southshore Road. See driving map for haul route. All harvesting, yarding and other contract requirements, except for final road maintenance, must be completed in Unit 2 and approved by the Contract Administrator prior to felling in other units.

TIMBER SALE MAP

SALE NAME: Q SOUTH SACHEEN
AGREEMENT #: 30-105143
TOWNSHIP(S): T31R43E
TRUST(S): Common School and Indemnity (3)

REGION: Northeast Region
COUNTY(S): Pend Oreille
ELEVATION RGE: 2280-3000

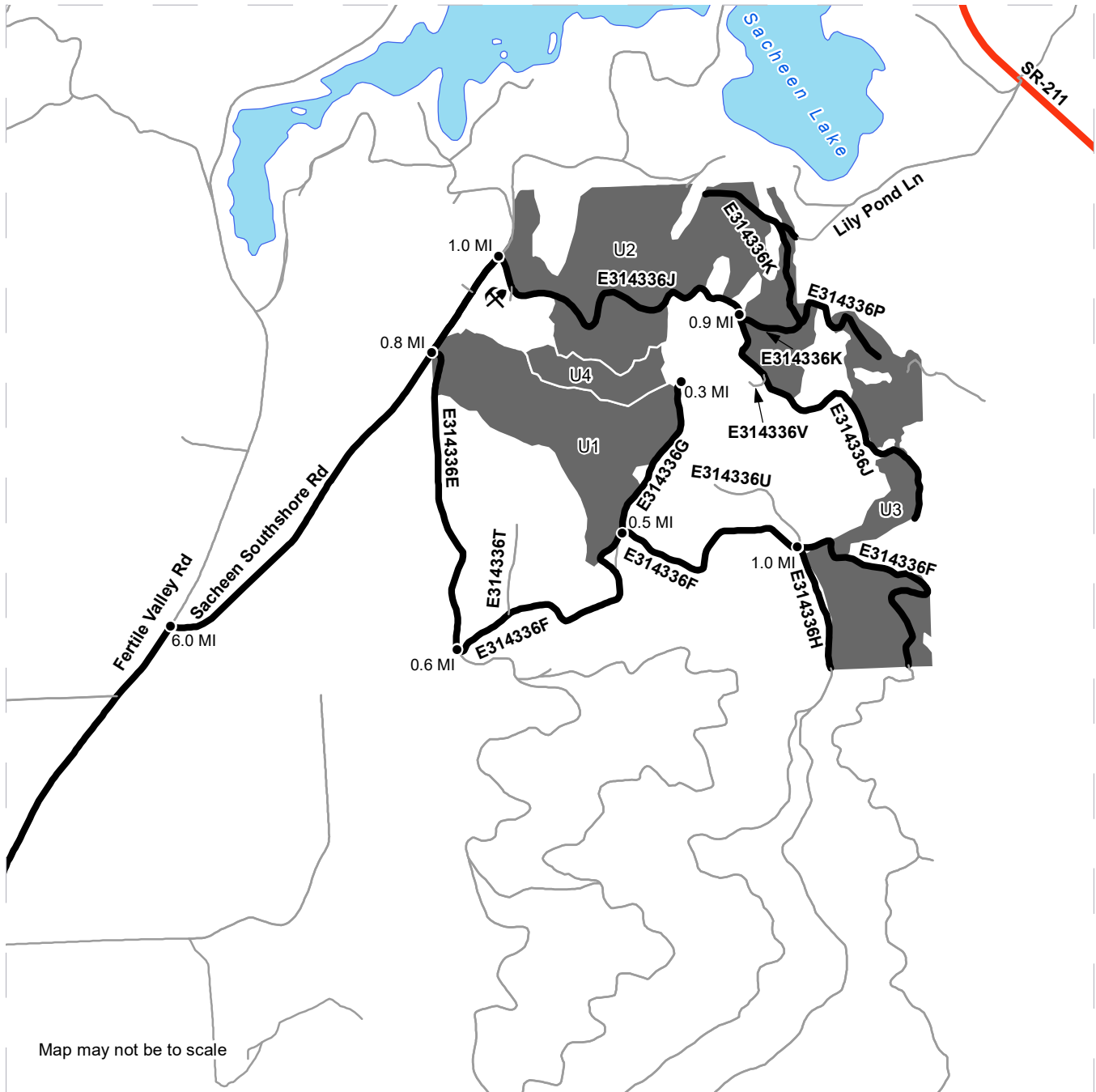


	Public Land Survey Townships		County Road		Riparian Mgt Zone
	DNR Managed Lands		Existing Roads		Wetlands - Non-forested
	Public Land Survey Sections		Required Pre-Haul Maintenance		Forested Wetland
	Variable Retention Harvest		Required Construction		Hazard Abatement Area
	Variable Density Thinning		Haul Route		Streams
	Sale Boundary Tags		Survey Monument		Survey Monument
	Right of Way Tags = 3 acres		Rock Source		Rock Source

DRIVING MAP

SALE NAME: Q SOUTH SACHEEN
AGREEMENT#: 30-105143
TOWNSHIP(S): T31R43E
TRUST(S): Common School and Indemnity (3)

REGION: Northeast Region
COUNTY(S): Pend Oreille
ELEVATION RGE: 2280-3000



Map may not be to scale

	Timber Sale Unit
	Haul Route
	Other Route
	Other Route
	Distance Indicator
	Rock Source

DRIVING DIRECTIONS:

From Usk, turn right onto WA-211 from State Route 20. Travel south for 15.1 miles. Turn right on State Route 2 and travel south for 3.7 miles. Turn right on Fertile Valley Road and travel north for 6 miles. Turn right on Sacheen Southshore Road and travel northeast for 0.8 miles to arrive at Unit 1.

Unit 2 and Unit 3: From the intersection of Fertile Valley Rd and Sacheen Southshore Road, travel 1.0 mile and turn right on the E314336J road to reach Unit 2. Continue on the E314336J for 0.9 miles to arrive at the northwest side Unit 3. To reach the south side of Unit 3: From Sacheen Southshore Rd, turn right and travel on the E314336E road for 0.6 miles. Turn left onto the E314336F road and travel northeast for 1.0 mile. At the fork, continue down E314336F to reach the southeast section of Unit 3 or take a right on E314336H to reach the southwest portion of Unit 3.

Unit 4: From Sacheen Southshore Rd, turn right on to the E314336E road and travel for 0.6 miles. Turn left onto the E314336F, and travel for 0.5 miles. Turn left onto the E314336G road and travel for 0.3 miles to reach the southeast corner of Unit 4.

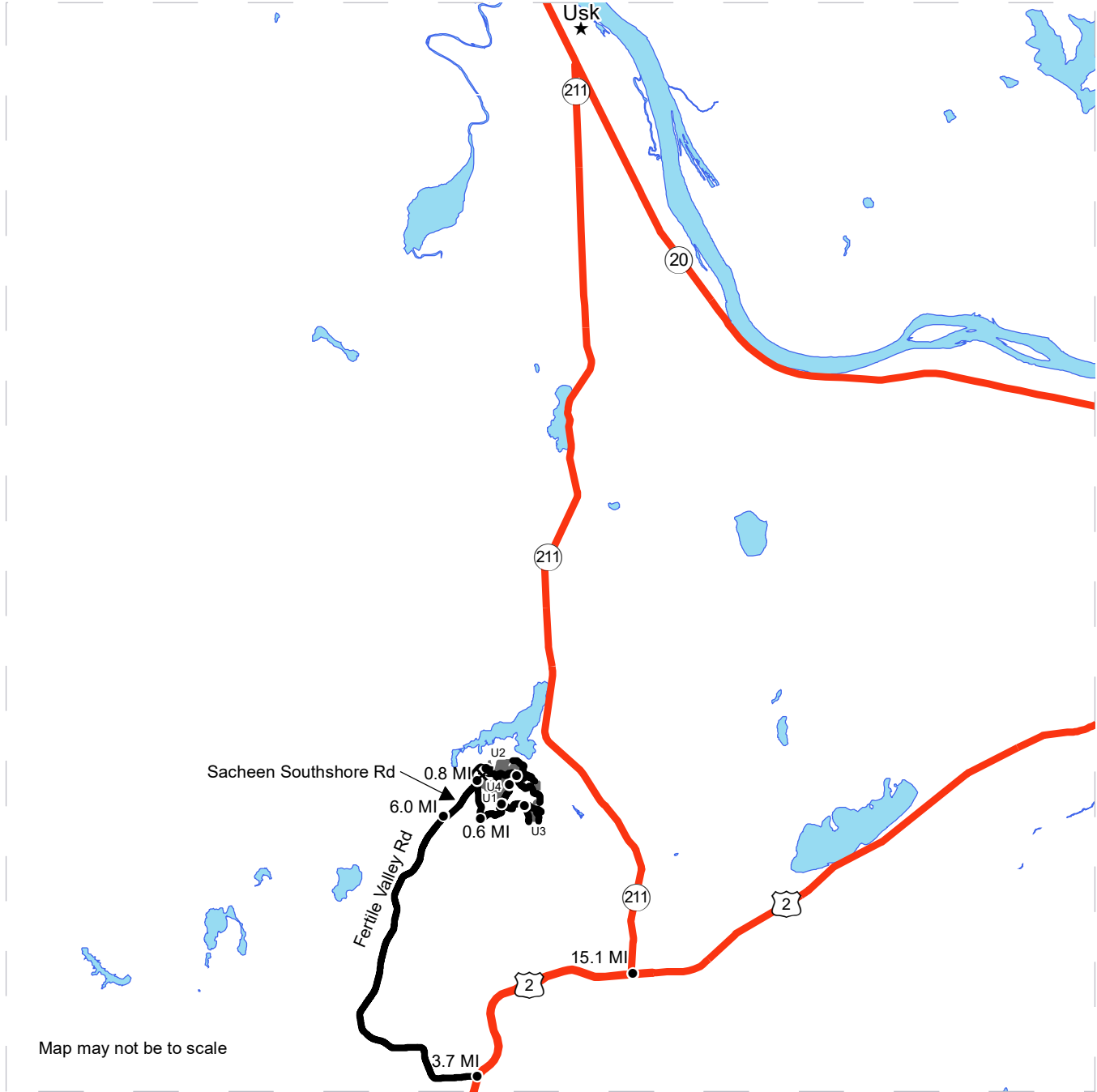
Note: All logging traffic and heavy equipment transport shall be prohibited on Fertile Valley road north of the intersection of Fertile Valley road and Sacheen Southshore road.



DRIVING MAP

SALE NAME: Q SOUTH SACHEEN
AGREEMENT#: 30-105143
TOWNSHIP(S): T31R43E
TRUST(S): Common School and Indemnity (3)

REGION: Northeast Region
COUNTY(S): Pend Oreille
ELEVATION RGE: 2280-3000



Map may not be to scale

- Timber Sale Unit
- Haul Route
- Distance Indicator
- Rock Source
- Town

DRIVING DIRECTIONS:

From Usk, turn right onto WA-211 from State Route 20. Travel south for 15.1 miles. Turn right on State Route 2 and travel south for 3.7 miles. Turn right on Fertile Valley Road and travel north for 6 miles. Turn right on Sacheen Southshore Road and travel northeast for 0.8 miles to arrive at Unit 1.
 Unit 2 and Unit 3: From the intersection of Fertile Valley Rd and Sacheen Southshore Road, travel 1.0 mile and turn right on the E314336J road to reach Unit 2. Continue on the E314336J for 0.9 miles to arrive at the northwest side Unit 3.
 To reach the south side of Unit 3: From Sacheen Southshore Rd, turn right and travel on the E314336E road for 0.6 miles. Turn left onto the E314336F road and travel northeast for 1.0 mile. At the fork, continue down E314336F to reach the southeast section of Unit 3 or take a right on E314336H to reach the southwest portion of Unit 3.
 Unit 4: From Sacheen Southshore Rd, turn right on to the E314336E road and travel for 0.6 miles. Turn left onto the E314336F, and travel for 0.5 miles. Turn left onto the E314336G road and travel for 0.3 miles to reach the southeast corner of Unit 4.

Note: All logging traffic and heavy equipment transport shall be prohibited on Fertile Valley road north of the intersection of Fertile Valley road and Sacheen Southshore road.





TIMBER NOTICE OF SALE

SALE NAME: BALD BALCONY

AGREEMENT NO: 30-104331

AUCTION: January 24, 2024 starting at 10:00 a.m., **COUNTY:** Skagit
Northwest Region Office, Sedro Woolley, WA

SALE LOCATION: Sale located approximately 27 miles southeast of Sedro-Woolley, WA.

PRODUCTS SOLD AND SALE AREA: All timber bounded by white timber sale boundary tags, property line, adjacent young stands and the BR-ML Road, except cedar salvage (cedar snags, preexisting dead and down cedar trees and cedar logs), trees marked with blue paint on the bole and root collar, and forest products tagged out by yellow leave tree area tags in Unit #1 (collectively labelled Unit 1A, Unit 1B and Unit 1C).

All forest products above located on part(s) of Sections 3 and 4 all in Township 33 North, Range 6 East, W.M., containing 62 acres, more or less.

CERTIFICATION: This sale is certified under the Sustainable Forestry Initiative® program Standard (cert no: BVC-SFIFM-018227)

ESTIMATED SALE VOLUMES AND QUALITY:

Species	Avg DBH	Ring Count	Total MBF	MBF by Grade								
				1P	2P	3P	SM	1S	2S	3S	4S	UT
Hemlock	17.5		1,857					20	990	695	122	30
Douglas fir	25.6	9	850						735	107	8	
Redcedar	12.7		144							121	23	
Silver fir	24.8		115						93	20	2	
Red alder	15.5		83						25	12	46	
Spruce	12		5							5		
Sale Total			3,054									

MINIMUM BID: \$619,000.00 **BID METHOD:** Sealed Bids

PERFORMANCE SECURITY: \$100,000.00 **SALE TYPE:** Lump Sum

EXPIRATION DATE: March 31, 2026 **ALLOCATION:** Export Restricted

BID DEPOSIT: \$61,900.00 or Bid Bond. Said deposit shall constitute an opening bid at the appraised price.

HARVEST METHOD: Cable OR tethered equipment (See below for restrictions); shovel, “6-wheeled rubber-tired skidders with over-the-tire tracks spanning both sets of rear tires” (See below for restrictions), tracked skidder or rubber-tired skidder on sustained slopes 35% or less; self-leveling equipment on sustained slopes 50% or less (See H-141 for restrictions); also, felling by tracked machinery may be utilized on sustained slopes 35% or less.

Prior written approval of the Contract Administrator is required before tethered or self-leveling equipment may be used. If ground disturbance is causing excessive damage, as determined by the Contract Administrator, the use of this equipment will no longer be authorized.



TIMBER NOTICE OF SALE

Purchaser must obtain prior written approval from the Contract Administrator for areas as to where "6 wheeled rubber-tired skidders with over-the-tire tracks spanning both sets of rear tires" can operate. If ground disturbance is causing excessive damage, as determined by the Contract Administrator, the equipment will no longer be authorized. Falling and Yarding will not be permitted from November 1 to March 31 unless authorized in writing by the Contract Administrator (THIS PERTAINS TO GROUND-BASED EQUIPMENT ONLY) to reduce soil damage and erosion.

ROADS:

7.29 stations of optional construction. 484.85 stations of required prehaul maintenance.

Rock may be obtained from the following source(s) on State land at no charge to the Purchaser: West Bear Pit at station 10+03 of the BR-3802-05 Road. Bald View Pit (for existing stockpile use) at Station 43+83 of the BR-82 Road.

Development of an existing rock source will involve drilling, shooting, and processing rock.

An estimated total quantity of rock needed for this proposal: 10 cubic yards of riprap, 5,000 cubic yards of 2-inch minus crushed and 845 cubic yards of ballast rock.

Road work and the hauling of rock will not be permitted from November 1 to March 31 unless authorized in writing by the Contract Administrator to reduce soil damage and siltation. The hauling of forest products will not be permitted from November 1 to March 31 unless authorized in writing by the Contract Administrator to reduce soil damage and siltation.

ACREAGE DETERMINATION

CRUISE METHOD:

Acres determined by GPS traverse for units. Cruise was conducted via variable plot sample type. All units were cruised with a 1-1 ratio. A 54.44/40 BAF combination was used throughout. See Cruise Narrative for further details. Shapefiles of units are available upon request, and on the DNR website after the BNR meeting in which the sale is presented.

FEES:

\$51,918.00 is due on day of sale. \$9.00 per MBF is due upon removal. These are in addition to the bid price.

SPECIAL REMARKS:

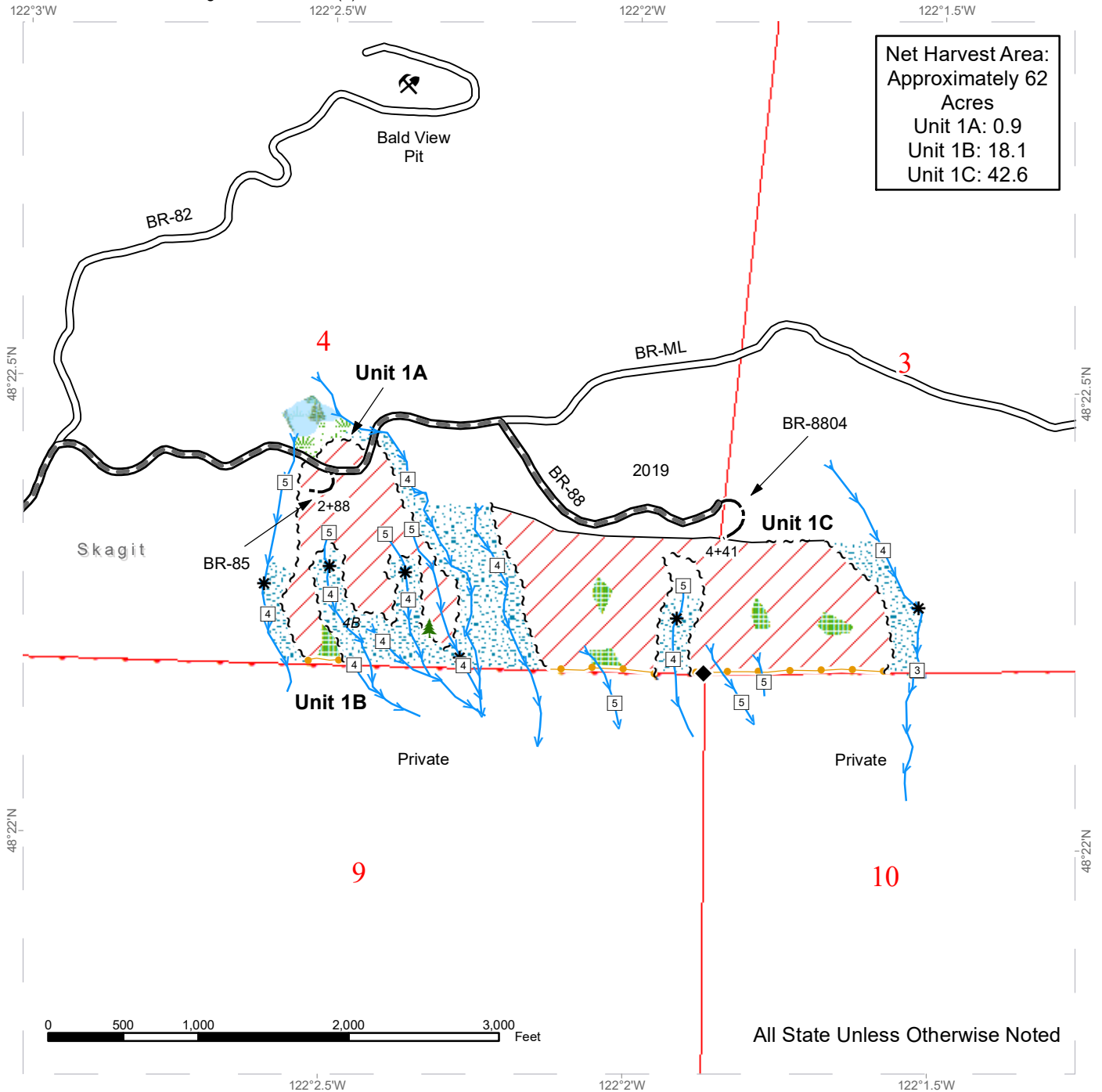
1. Trees marked with pink paint represent the last take tree on State land along property line boundaries.
2. HQ DF as well as pole quality redcedar noted within a portion of the sale area. See cruise for further details.
3. Cedar salvage may be offered for sale separately from the timber sale and is NOT included in the products sold.
4. The sale can have snow persisting in the area for long periods of time.
5. Cable yarding shall not occur over stream 4B per H-141.

TIMBER SALE MAP

SALE NAME: BALD BALCONY
AGREEMENT #: 30-104331
TOWNSHIP(S): T33R6E
TRUST(S): Agricultural School (4)

REGION: Northwest Region
COUNTY(S): Skagit
ELEVATION RGE: 1480-2180

Net Harvest Area:
 Approximately 62
 Acres
 Unit 1A: 0.9
 Unit 1B: 18.1
 Unit 1C: 42.6

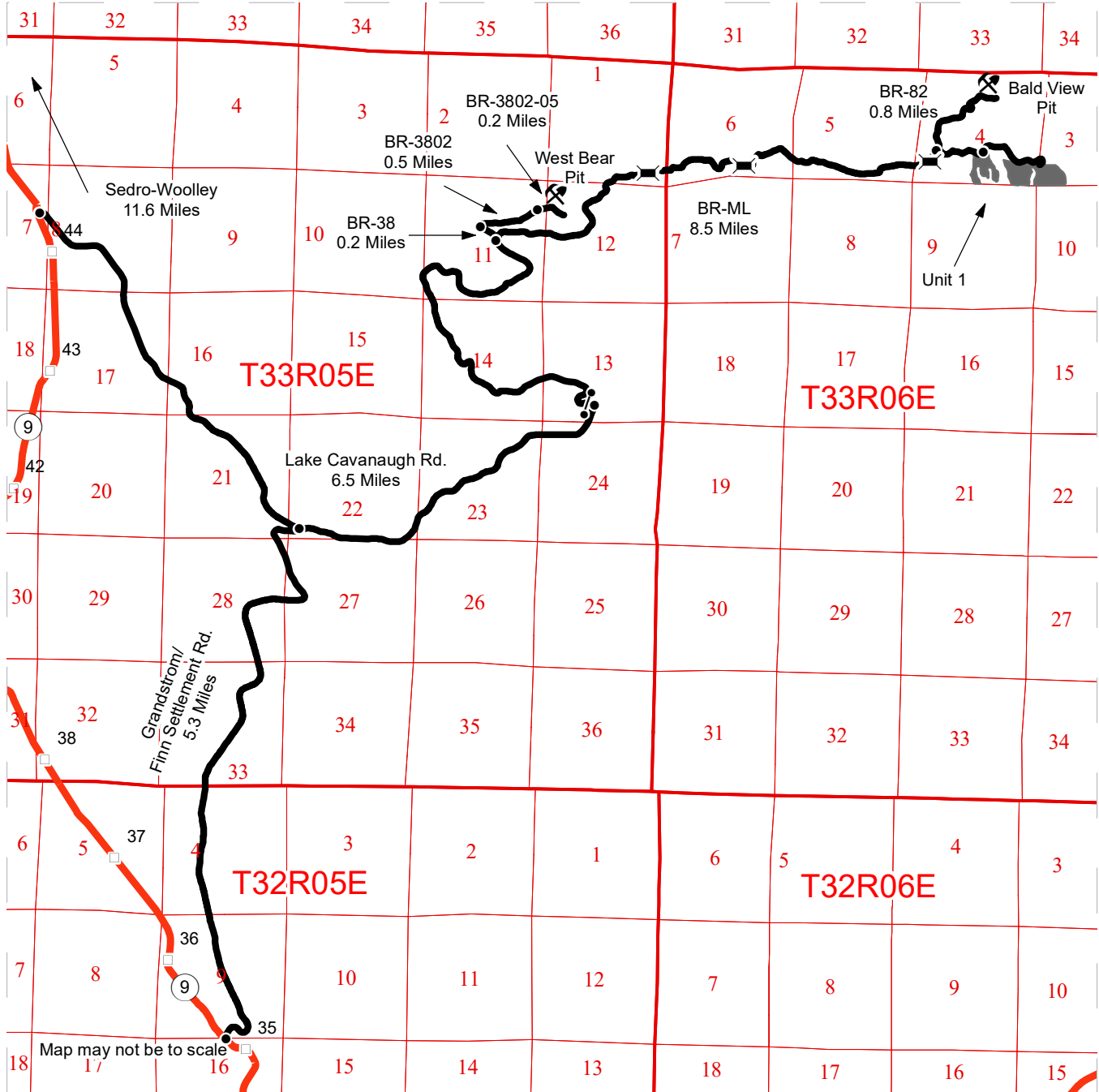


Variable Retention Harvest	Required Pre-Haul Maintenance	Stream Type Break
DNR Managed Lands	Optional Construction	Bridge
Leave Tree Area	Sale Boundary Tags	Survey Monument
Riparian Mgt Zone	Take / Removal Trees	Leave Tree Area <1/4-acre
Forested Wetland	Timber Type Change	Rock Pit
Wetland Mgt Zone	Streams	
Existing Roads	Stream Type	

DRIVING MAP

SALE NAME: BALD BALCONY
AGREEMENT#: 30-104331
TOWNSHIP(S): T33R5E, T33R6E
TRUST(S): Agricultural School (4)

REGION: Northwest Region
COUNTY(S): Skagit
ELEVATION RGE: 1480-2180



- Timber Sale Unit
- Haul Route
- Highway
- Milepost Markers
- ✂ Bridge
- Distance Indicator
- ⚓ Gate (F1-3)
- Rock Pit

DRIVING DIRECTIONS:

From the junction of Highway 20 and Highway 9 in Sedro-Woolley, travel south 11.6 miles on Highway 9 to Lake Cavanaugh Road. Travel east on Lake Cavanaugh Road for 6.5 miles to the Bear Creek Mainline (BR-ML) gate.

Unit 1: From the BR-ML gate, follow the BR-ML for 8.5 miles to unit 1.

West Bear Pit: From the BR-ML gate, follow the BR-ML for 3.8 miles, take the left fork onto the BR-38 road. Follow the BR-38 road for 0.2 miles then turn right onto the BR-3802 for 0.5 miles. Turn onto the BR-3802-05, follow for 0.2 miles to the West Bear Pit.

Bald View Pit: From the BR-ML gate, follow the BR-ML for 8.2 miles, take the left fork onto the BR-82 road. Follow the BR-82 road for 0.8 miles to Bald View Pit.





TIMBER NOTICE OF SALE

SALE NAME: ROCKY TOP

AGREEMENT NO: 30-105934

AUCTION: January 25, 2024 starting at 10:00 a.m., COUNTY: Skamania Pacific Cascade Region Office, Castle Rock, WA

SALE LOCATION: Sale located approximately 22 miles northeast of Washougal

PRODUCTS SOLD AND SALE AREA: All timber, except leave trees marked with blue paint, and all downed timber greater than 30 inches in diameter and snags bound by the following:

Units 1, 2, 3, white "Timber Sale Boundary" tags and pink flagging;

Units 4, 5, & 6 (ROW), orange "Right of Way" tags and orange flagging;

All forest products above located on part(s) of Sections 20, 29 and 30 all in Township 3 North, Range 6 East, W.M., containing 138 acres, more or less.

CERTIFICATION: This sale is certified under the Sustainable Forestry Initiative® program Standard (cert no: BVC-SFIFM-018227)

ESTIMATED SALE VOLUMES AND QUALITY:

Table with columns: Species, Avg DBH, Ring Count, Total MBF, and MBF by Grade (1P, 2P, 3P, SM, 1S, 2S, 3S, 4S, UT). Rows include Douglas fir, Hemlock, Red alder, Silver fir, Noble fir, and Sale Total.

MINIMUM BID: \$1,595,000.00 BID METHOD: Sealed Bids

PERFORMANCE SECURITY: \$100,000.00 SALE TYPE: Lump Sum

EXPIRATION DATE: October 31, 2026 ALLOCATION: Export Restricted

BID DEPOSIT: \$159,500.00 or Bid Bond. Said deposit shall constitute an opening bid at the appraised price.

HARVEST METHOD: Cable, Cable-Assist, and Shovel. This sale is estimated to be 15 percent ground based harvest and 85 percent cable based harvest systems. Ground-based yarding is restricted to sustained slopes of 40 percent or less; Cable-assist to sustained slopes of 70 percent or less. For additional harvest requirements, refer to the H-140 clause in the contract. Ground Based Yarding will not be permitted from October 1 to April 30 unless authorized in writing by the Contract Administrator.



TIMBER NOTICE OF SALE

ROADS: 69.07 stations of required construction. 32.21 stations of required reconstruction. 2.12 stations of optional construction. Rock used in accordance with the quantities on the ROCK LIST may be obtained from the W-2020 Pit located in W $\frac{1}{2}$ W $\frac{1}{2}$ Sec. 29, T03N, R06E, W.M. on state land at no charge to the Purchaser.

Purchaser shall conduct rock source development and use at the W-2020 Pit located in W $\frac{1}{2}$ W $\frac{1}{2}$ Sec. 29, T03N, R06E, W.M., in accordance with the written ROCK SOURCE DEVELOPMENT PLAN prepared by the state and included in this road plan. Upon completion of operations, the rock source must be left in the condition specified in the ROCK SOURCE DEVELOPMENT PLAN, and approved in writing by the Contract Administrator.

Rock used in accordance with the quantities on the ROCK LIST may be obtained from any commercial source at the Purchaser's expense. Rock sources are subject to written approval by the Contract Administrator before their use. Road construction and reconstruction will not be permitted from October 1 to April 30 unless authorized in writing by the Contract Administrator. The hauling of forest products will not be permitted from November 1 to April 30 unless authorized in writing by the Contract Administrator.

ACREAGE DETERMINATION

CRUISE METHOD: The sale acres were determined by GPS. The sale area was cruised using a variable plot cruise method.

FEES: \$111,129.00 is due on day of sale. \$9.00 per MBF is due upon removal. These are in addition to the bid price.

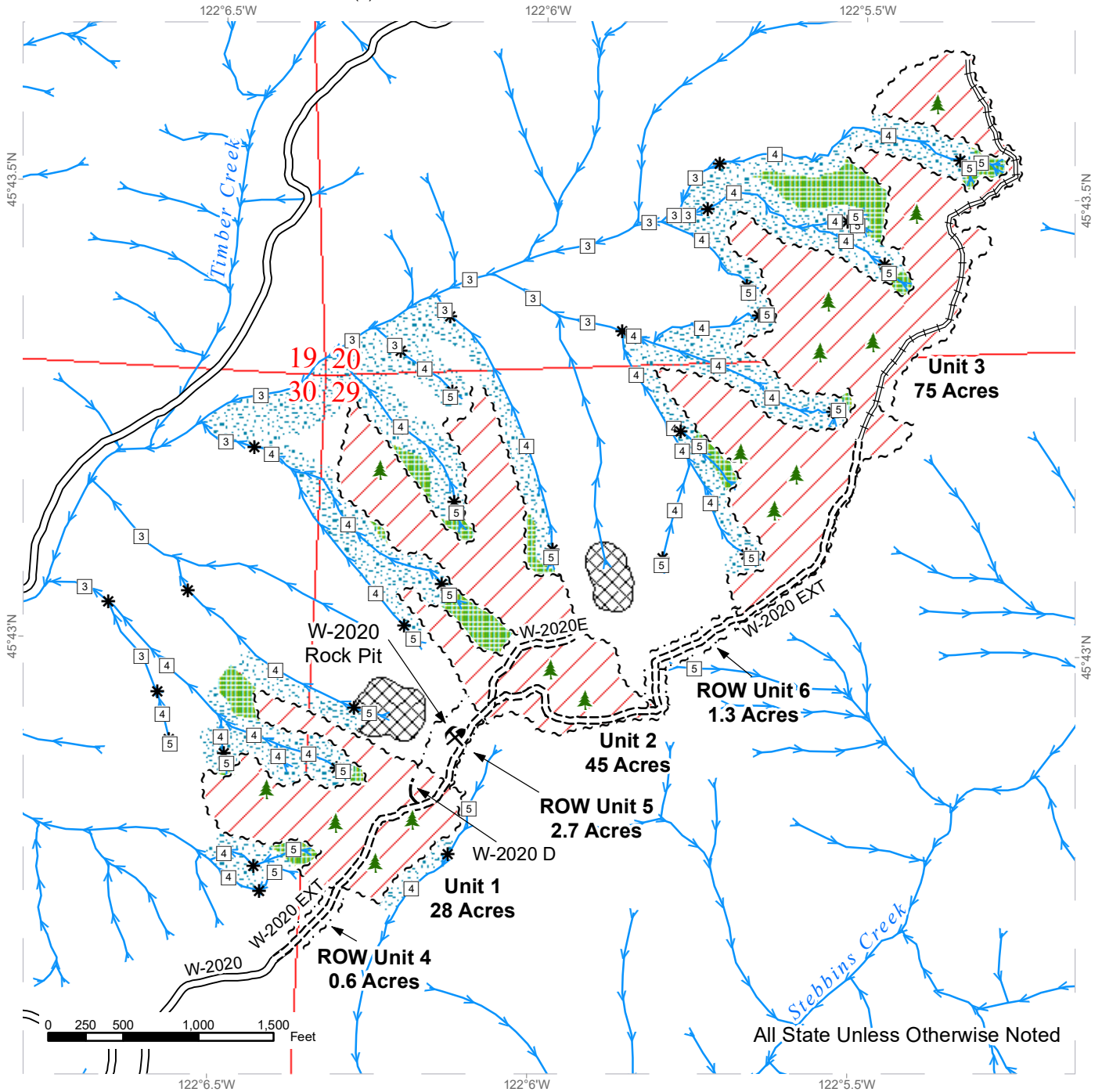
SPECIAL REMARKS: This sale has approximately 327 MBF SM DF, 542 MBF of High Quality 2 Saw DF, 192 MBF of High Quality 3 Saw DF, see cruise for details.

PCP 1-1 gate keys may be obtained from the Pacific Cascade Region office.

TIMBER SALE MAP

SALE NAME: ROCKY TOP
AGREEMENT #: 30-105934
TOWNSHIP(S): T3R6E
TRUST(S): State Forest Transfer (1)

REGION: Pacific Cascade Region
COUNTY(S): Skamania
ELEVATION RGE: 1280-2280



Variable Retention Harvest	Sale Boundary Tags	Streams
Talus and Buffer	Right of Way Tags	Stream Type
Leave Tree Area	Right of Way Tags	Stream Type Break
Riparian Mgt Zone	Existing Roads	Leave Tree Area <1/4-acre
	Required Construction	Rock Pit
	Required Reconstruction	
	Optional Construction	



DRIVING MAP

SALE NAME: ROCKY TOP
AGREEMENT#: 30-105934
TOWNSHIP(S): T3R6E
TRUST(S): State Forest Transfer (1)

REGION: Pacific Cascade Region
COUNTY(S): Skamania
ELEVATION RGE: 1280-2280



- Timber Sale Unit
- Haul Route
- Other Road
- Milepost Markers
- Distance Indicator
- Gate (PCP 1-1)
- Rock Pit

DRIVING DIRECTIONS:

From State Route 14, near mile marker 16, turn north onto Washougal River Road and travel for 10.2 miles.

At the intersection with Salmon Falls Road, continue straight on Washougal River Road for another 7.5 miles.

Turn right onto the W-2000 road at Dougan Falls and follow for 3 miles.

Turn right onto the W-2020 road, go through the gate using a PCP 1-1 key, and continue for 1.5 miles to access the harvest units and W-2020 Rock Pit.





TIMBER NOTICE OF SALE

SALE NAME: *LOOMIS TRAIL*

AGREEMENT NO: *30-104584*

AUCTION: January 24, 2024 starting at 10:00 a.m., **COUNTY:** Whatcom
Northwest Region Office, Sedro Woolley, WA

SALE LOCATION: Sale located approximately 15 miles northwest of Bellingham, WA

PRODUCTS SOLD AND SALE AREA: All timber bounded by property lines and existing county road right-of-way (Giles Road and White Road), except cedar salvage (cedar snags, preexisting dead and down cedar trees and cedar logs), and trees marked with blue paint on the bole and root collar, Unit #1.

All forest products above located on part(s) of Sections 16 all in Township 40 North, Range 1 East, W.M., containing 28 acres, more or less.

CERTIFICATION: This sale is certified under the Sustainable Forestry Initiative® program Standard (cert no: BVC-SFIFM-018227)

ESTIMATED SALE VOLUMES AND QUALITY:

Species	Avg DBH	Ring Count	Total MBF	MBF by Grade								
				1P	2P	3P	SM	1S	2S	3S	4S	UT
Douglas fir	19.3	8	556						332	198	25	1
Cottonwood	15.8		72						66		4	2
Red alder	11.5		22						2		10	10
Birch	10.4		19						3		11	5
Redcedar	20.7		15							12	3	
Sale Total			684									

MINIMUM BID: \$220,000.00 **BID METHOD:** Sealed Bids

PERFORMANCE SECURITY: \$44,000.00 **SALE TYPE:** Lump Sum

EXPIRATION DATE: March 31, 2026 **ALLOCATION:** Export Restricted

BID DEPOSIT: \$22,000.00 or Bid Bond. Said deposit shall constitute an opening bid at the appraised price.

HARVEST METHOD: Cable; cable or shovel for yarding. Chainsaw or harvester/feller-buncher for falling.

ROADS: 3.75 stations of required construction. 3.75 stations of abandonment, if built.

Rock (3-inch minus ballast rock) may be obtained from a commercial source at the Purchaser's expense.

An estimated total quantity of rock needed for this proposal: 280 cubic yards of ballast and 75 cubic yards of surfacing.

Road work and the hauling of rock will not be permitted from November 1 to March 31 unless authorized in writing by the Contract Administrator to reduce soil damage and



TIMBER NOTICE OF SALE

siltation. The hauling of forest products will not be permitted from November 1 to March 31 unless authorized in writing by the Contract Administrator to reduce soil damage and siltation

ACREAGE DETERMINATION

CRUISE METHOD: Acres determined by GIS. See Cruise Narrative for further details. Shapefiles of units are available upon request, and on the DNR website after the BNR meeting in which the sale is presented.

FEES: \$11,628.00 is due on day of sale. \$9.00 per MBF is due upon removal. These are in addition to the bid price.

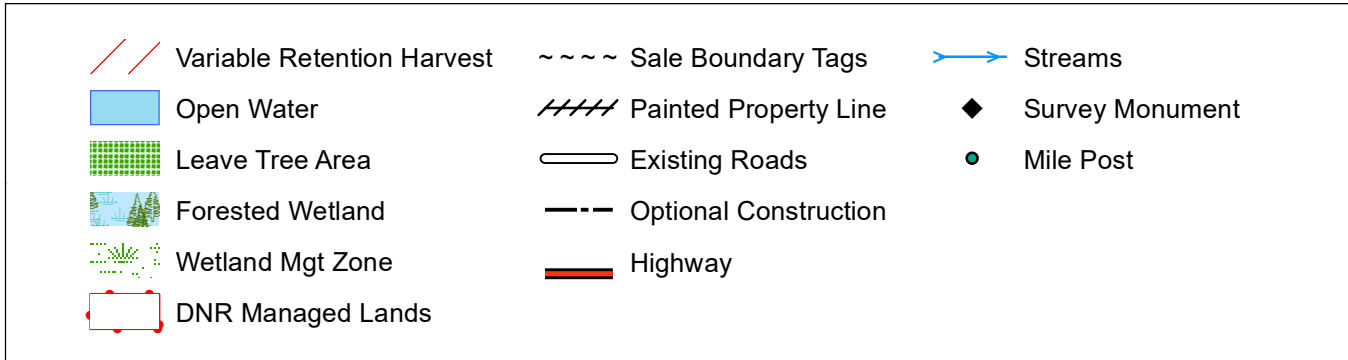
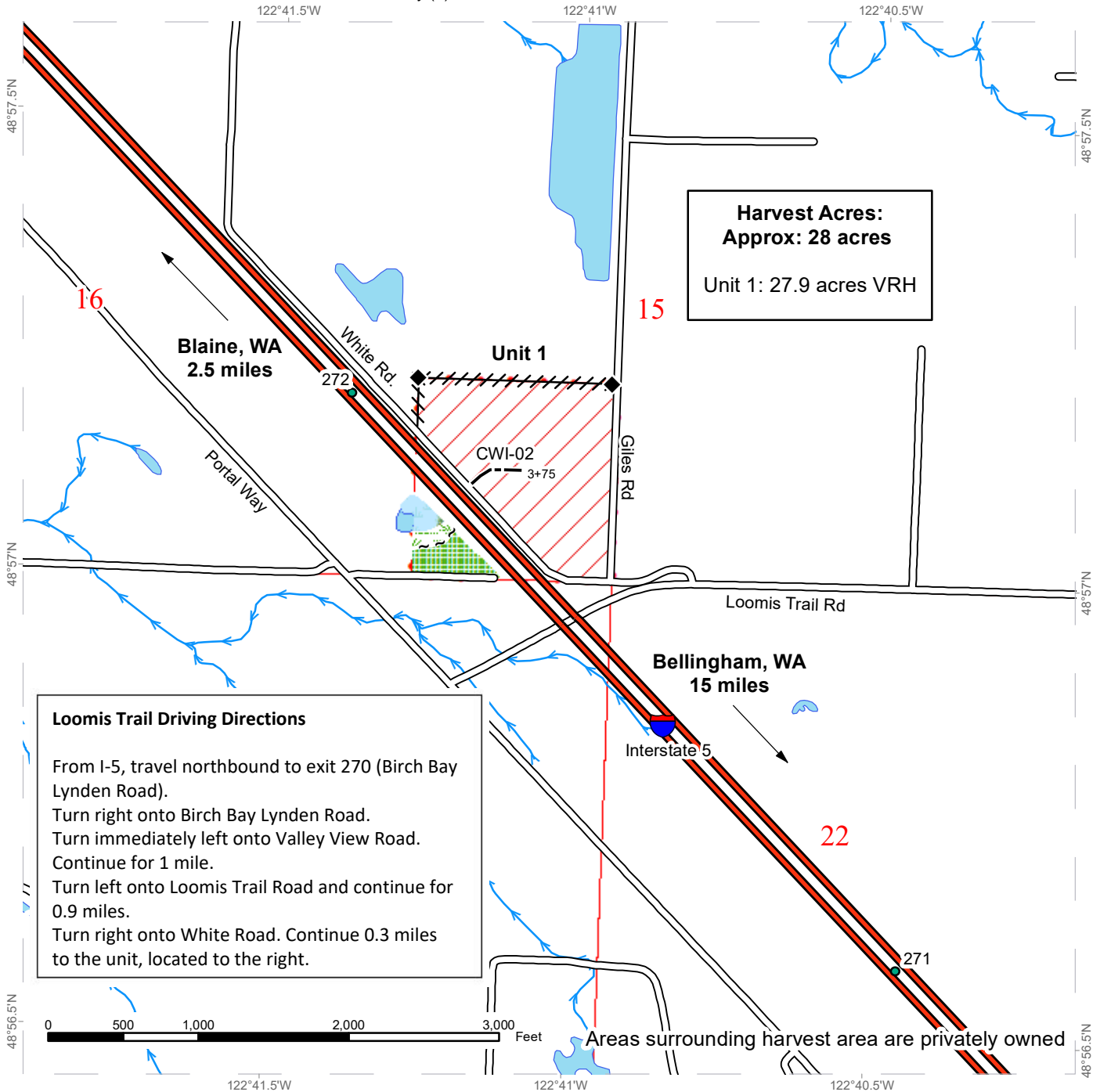
SPECIAL REMARKS:

1. Trees marked with pink paint represent the last take tree on State land along property line boundaries.
2. HQ DF noted within the sale area. See cruise for further details.
3. Extreme Hazard Abatement clause applies to the entire perimeter of the harvest area.
4. Cedar salvage may be offered for sale separately from the timber sale and is NOT included in the products sold.
5. Purchaser must provide a written traffic control plan for harvest operations conducted adjacent to county road prior to the commencement of harvest activities.

TIMBER SALE & DRIVING MAP

SALE NAME: LOOMIS TRAIL
AGREEMENT #: 30-104584
TOWNSHIP(S): T40R1E
TRUST(S): Common School and Indemnity (3)

REGION: Northwest Region
COUNTY(S): Whatcom
ELEVATION RGE: 40-40



**State of Washington
Department of Natural Resources**

SEALED BID FORM

Sale Name _____ Agreement Number _____

_____ hereby submits the following bid for timber.
(Print full, legal company name)

(Street address, City, State, Zip Code)

(Phone Number)

Lump Sum Bid (Not Including Fees) \$ _____ **For Total Sale**

Weight Scale Sale Bid (Not Including Fees) \$ _____ / **Ton**

Scribner Scale Sale Bid (Not Including Fees) \$ _____ / **MBF For Biddable Species**

BID DEPOSIT

Bid Deposit Amount: \$ _____

Bid Deposit Type:

- Cash, certified check, cashiers check, or money order
- Per Sale Bid Bond
- Statewide Bid Bond, Number _____

Within 30 days of confirmation date the successful bidder agrees to furnish Performance Security acceptable to the State in the amount specified on the Notice of Sale. Performance Security must guarantee performance of all provisions of the contract and payment of any damages caused by operations under the contract or resulting from the successful bidders noncompliance with any rule or law.

Bidder's Warranty and Bid Signature

By signing and submitting this bid as an offer to purchase forest products from the State, the Bidder hereby warrants to the State that they have had an opportunity to fully inspect the sale area and the forest products being sold. Bidder further warrants to the State that they enter this bid based upon their own judgments of the value of the forest products, formed after their own examination and inspection of both the timber sale area and the forest products being sold. Bidder also warrants to the State that they enter this bid without any reliance upon the volume estimates, acreage, appraisals, pre-bid documentation, or any other representation by the Washington State Department of Natural Resources.

_____ Date _____
(Signature of Authorized Representative submitting this bid)

(Print **name and title** of Authorized Representative submitting this bid)

Note: all sales are subject to confirmation by the Commissioner of Public Lands (Refer 79.15.120)

Instructions For Completing Sealed Bid Form

All bids submitted for the purchase of forest products being sold by the Washington State Department of Natural Resources must have an original signature on behalf of the person or entity submitting the bid, and must be on the form provided in this booklet or a photocopy thereof. The DNR will not accept bids that are not signed, and will not accept bids that are not on the current, approved bid form. All appropriate blanks on bid form must be completed including the bid bond number if the bidder is relying upon a bid bond for bid deposit.

For more specific information, contact the appropriate region office.

In-Person Bids

- A. Sealed bids must be in auction box before 10:00 a.m. on the day of auction at the location specified in the Timber Notice of Sale.
 - B. Sealed bids must be submitted in an envelope with the name of the sale, the bidder's name and the contract number clearly written on the outside of the envelope. The full legal name and business address of the bidder must be inserted where indicated on the form, and must be on the bid bond and timber sale contract. The bid form must be signed by an authorized representative. When a bidder has more than one person authorized to bid, documentation of those persons with signature authority for bidding must accompany the bid or be on file at the region office. Sealed bid envelopes are available at all region offices. One bid per envelope.
 - C. Sealed bid envelopes **must** contain a completed bid form and a bid deposit.
 - D. Sealed bid envelopes **may** contain a check for the Initial Deposit amount and a check for fees.
-

Mailed Bids

- A. Bids that are mailed are required to have printed on the outside: "DO NOT OPEN UNTIL SALE DATE. SEALED BID ENCLOSED". The sealed bid envelope(s) will be enclosed inside the mailed-in envelope. Mailed bids must be submitted in an envelope with the name of the sale, the bidder's name and the agreement number clearly written on the outside of the envelope. The full legal name and business address of the bidder must be inserted where indicated on the form, and must be the same on the bid bond and timber sale contract. The Sealed Bid Form must be signed by an authorized representative. When a bidder has more than one person authorized to bid, documentation of those persons with signature authority for bidding must accompany the bid or be on file at the region office. Mail-in envelopes are available at all region offices. One bid per mailed-in envelope.
 - B. Bids that are mailed will be accepted up to 4:30 p.m. the last business day before the auction by the region office in which the sale is located. Bidders assume the risk for the method of delivery. The DNR assumes no responsibility for any delays caused by any delivery service.
 - C. Sealed bid envelopes **must** contain a completed bid form and a bid deposit.
 - D. Sealed bid envelopes **may** contain a check for the Initial Deposit amount and a check for fees.
-

Initial Deposit:

Lump Sum Sales - Initial Deposit must equal 10% of the total bid submitted.
(25% if the bidder is a defaulter as defined under WAC 332-140-300)

Weight Scale Sales - Initial Deposit must equal 10% of the bid per ton multiplied by the total sale estimated tonnage. (25% if the bidder is a defaulter as defined under WAC 332-140-300)

Scribner MBF Scale Sales - Initial Deposit must equal 10% of the bid per MBF multiplied by the total sale MBF. (25% if the bidder is a defaulter as defined under WAC 332-140-300)

**State of Washington
Department of Natural resources**

STATEWIDE BID BOND

Bond Number _____

_____ of _____,
(Principal's Name) (City, State)

hereinafter called PRINCIPAL, and _____ hereinafter called
SURETY,

a corporation organized under the laws of the State of _____, and authorized to transact surety business in the State of Washington, as SURETY, are held and firmly bound jointly and severally to the State of Washington, Department of Natural Resources, hereinafter called the STATE, in the sum of \$150,000.00 Dollars, lawful money of the United States of America. The PRINCIPAL binds itself, its heirs, executors, administrators, successors, and assigns, and the SURETY binds itself, its successors, and assigns, all jointly and severally.

This bond shall be governed by the laws of the State of Washington. In the event of a lawsuit involving this bond, a venue shall be proper only in Thurston County Superior Court.

Signed, sealed and dated this _____ day of _____, _____ .
(month) (year)

This statewide bid bond may be used for bidding between the following dates:

Starting:

Ending:

It Is Hereby Understood and Agreed:

If PRINCIPAL is an apparent high bidder, PRINCIPAL shall before 4:30 p.m ., on day of sale, pay to the STATE the amount of the initial deposit in the form of a certified check, cashier's check, bank draft, cash or money order, then this agreement shall be void for the sale on which the payment is made; otherwise, it will remain in force.

SURETY will make payment to the STATE within ten days after demand by the STATE if the PRINCIPAL shall fail to make timely payment as described above.

The SURETY may cancel this bond by sending a written notice to the STATE, not less than forty-five days before a cancellation date; liability shall terminate as to acts or omissions of the PRINCIPAL that occur after the cancellation date.

The PRINCIPAL and the SURETY executed this bond on the date first mentioned.

Principal: (Above named)

Signature: _____

Name: _____

Title: _____

Address: _____

City: _____
State & Zip Code

Surety: (Above named)

Signature: _____

Name: _____

Title: _____

Address: _____

City: _____
State & Zip Code

Surety: (Local Office of Authorized agent)

Signature: _____

Name: _____

Title: _____

Address: _____

City: _____
State & Zip Code

Notary or Company Seal in Space Above

Instructions for Completing Timber Sale Statewide Bid Bond

- A. This form is authorized for use as bid guaranty to qualify for bidding on Washington State Department of Natural Resources timber sales.
- B. The Statewide Bid Bond may be used as bid guaranty on more than one timber sale.
- C. The full legal name and business address of the PRINCIPAL must be inserted where indicated and must be the same as will appear on the bidding record and timber sale contract. The bond must be signed by an authorized person. Additionally, the name must be typed or printed below the signature and title must be shown.
- D. The full legal name and business address of the SURETY must be inserted where indicated. The bond must be signed by an authorized person. Additionally, the name must be typed or printed below the signature and the title must be shown.
- E. If the SURETY does not have a Washington State office or resident agent, but is authorized to transact surety business in the State of Washington as SURETY, it may leave this signature block blank.
- F. This form must be received by the Department of Natural Resources, Product Sales & Leasing Division, PO BOX 47016, Olympia, Washington, 98504-7016, ten days in advance of the auction.
- G. **The State reserves the right to reject *incomplete or incorrect* bid bond forms, making such forms unacceptable as bid guaranty.**

**State of Washington
Department of Natural Resources**

Timber Sale Per Sale Bid Bond

Bond Number _____

_____ of _____, hereinafter called PRINCIPAL, and _____, hereinafter called SURETY, a corporation organized under the laws of the State of _____ and authorized to transact surety business in the State of Washington, as SURETY, are held and firmly bound jointly and severally to the State of Washington, Department of Natural Resources, hereinafter called the STATE, in the sum of \$ _____ Dollars, lawful money of the United States of America. The PRINCIPAL binds itself, its heirs, executors, administrators, successors, and assigns, and the SURETY binds itself, its successors, and assigns, all jointly and severally.

This bond shall be governed by the laws of the State of Washington. In the event of a lawsuit involving this bond, venue shall be proper only in Thurston County Superior Court.

Signed, sealed, and dated this _____ day of _____, 20 _____.

BID IDENTIFICATION:

SALES NAME(S)	REQUIRED DEPOSIT	AGREEMENT NUMBER(S)

DATE OF BID: _____

It Is Hereby Understood and Agreed:

If PRINCIPAL is the high bidder on the sale(s) identified above and, within ten (10) days of the day of sale, transmits cash, certified check, cashier's check, bank draft or money order, payable to the STATE, in the amount of the bid guaranty required by the terms of the Notice of Sale, *then* this obligation shall be void; *otherwise*, it shall remain in force.

SURETY will make payment to the STATE within ten (10) days after demand by the STATE whenever the PRINCIPAL shall fail to make timely payment as described above.

IN WITNESS WHEREOF: the PRINCIPAL and the SURETY have caused this bond to be executed on the date first mentioned.

SECOND OFFICER:

Signature: _____

Name: _____

Title: _____

PRINCIPAL: (Above Named)

Signature: _____

Name: _____

Title: _____

SURETY: (Local Office of Authorized Agent)

Signature: _____

Name: _____

Title: _____

Address: _____

City: _____

State & Zip: _____

SURETY: (Above Named)

Signature: _____

Name: _____

Title: _____

Address: _____

City: _____

State & Zip _____

NOTARY OR COMPANY SEAL IN THE SPACE ABOVE

Instructions for Completing Timber Sale Per Sale(s) Bid Bond

- A. This form is authorized for use as bid guaranty to qualify for bidding on Washington State Department of Natural Resources timber sales.
- B. The Timber Sale Per Sale Bid Bond may be used as bid guaranty on more than one timber sale auction held the same date at the same location.
- C. The full legal name and business address of the PRINCIPAL must be the same as will appear on the bidding record and timber sale contract. The bond must be signed by an authorized person, the name typed or printed, and title shown. If PRINCIPAL is a corporation, a second officer must sign in the space to the left of the signature of the officer executing for the PRINCIPAL.
- D. The full legal name and business address of the SURETY must be inserted where indicated. The bond must be signed by an authorized person. Additionally, the name must be typed or printed below the signature and the title must be shown. If this person is not an officer of the corporation, evidence of authority must be submitted.
- E. If the SURETY does not have a Washington State office or resident agent, but is authorized to transact surety business in the State of Washington as Surety, it may leave the local office signature block blank.
- F. The date of the bid bond must not be later than the auction date.
- G. **The State reserves the right to reject incomplete or *incorrect* bid bond forms, making such forms unacceptable as guaranty.**

STATE OF WASHINGTON
DEPARTMENT OF NATURAL RESOURCES

LOG SORT SEALED BID FORM

Sale Name _____ Agreement Number _____ Date _____

_____ hereby submits the following bid for delivered logs.
(Print Company Name)

_____ Telephone Number _____
(Print Name Authorized Company Representative) (Contact for bid result notification)

(Street Address)

(City, State and Zip)

Agreement Number	Sort Number	<u>Delivered Logs Bid Amount</u> (fill in one only)	
		\$ /MBF	\$ /TON

Bid Deposit Amount \$ _____

- Bid Deposit Type:**
- Cash, Certified Check, Cashiers Check, or Money Order
 - Per Sale Bid Bond
 - Statewide Bid Bond, Number _____

The successful bidder agrees to furnish payment security acceptable to the State in the amount as described in clause P-041 of the Purchaser’s contract prior to log delivery and at a date to be determined by the State.

Bidder’s Warranty and Bid Signature

By signing and submitting this bid as offer to purchase forest products from the State, the Bidder hereby warrants to the State that they have had an opportunity to fully inspect the sale area and the forest products being sold. Bidder further warrants to the State that they enter this bid based solely upon their own judgment of the value of the forest products, formed after their own examination and inspection of both the timber sale area and the forest products being sold. Bidder also warrants to the State that they enter this bid without any reliance upon the volume estimates, acreage estimates, appraisals, pre-bid documentation, or any other representation by the State Department of Natural Resources.

(Signature of Authorized Representative submitting this bid)

(Date of Signature)

(Print name and title of Authorized Representative submitting this bid)

NOTES: A separate bid form is required for each log sort bid and must be delivered in a separate envelope. Photocopies of this bid form may be used. Each photocopy must have original signatures. Final contract award is contingent upon the State’s haul cost analysis. Actual haul route may vary and is subject to change at the State’s discretion. All sales are subject to confirmation by the Commissioner of Public Lands as per RCW 79.15.100.

LOG SORT SEALED BID SUPPLEMENTAL INFORMATION FORM_____
(Print Company Name)_____
(Sale Name)_____
(Agreement Number)_____
(Sort Number)_____
(email: optional for DNR production report distribution)**Log Manufacturing Specifications:****Sawlog and Peeler sorts:** Enter at least one preferred log length including trim for each log length range below.**Pole sorts (Distribution):** Enter three or more lengths. Attach preferred manufacturing information.**Pole sorts (Transmission):** Enter six or more lengths. Attach preferred manufacturing information.**Tonnage sorts:** See bid form instructions for required log lengths. Enter additional custom lengths as desired.

Log Length Ranges	Bidder's Preferred Log Lengths
16 ft. through 20 ft.	
22 ft. through 30 ft.	
32 ft. through 40 ft.	
Distribution Poles – 35 ft. through 55 ft.	
Transmission Poles – 60 ft.+	

Log Delivery Information:**1) Designate the point of delivery and address (must be a street address)**_____
(Location Name)_____
(Street Address)_____
(City, State and Zip)**2) Designate the state approved Scaling and Weighing facilities closest to the point of delivery as needed.****Scaling Location Information****Weighing Location Information**_____
(Scaling Location Name)_____
(Weighing Location Name)_____
(Third Party Scaling Organization)_____
(Weighing Location Owner)_____
(Scaling Location Street Address)_____
(Weighing Location Street Address)_____
(Scaling Location City, State and Zip)_____
(Weighing Location City, State and Zip)

Final contract award is contingent upon the State's haul cost analysis. Actual haul route may vary and is subject to change at the State's discretion. Additional terms or conditions requested by the bidder on or attached to the Log Sort Sealed Bid or Supplemental Information Forms are informational only and non-binding.

Instructions for Completing the Log Sort Sealed Bid and Supplemental Information Forms.

All bids submitted for the purchase of forest products being sold by the Washington State Department of Natural Resources must have an original signature on behalf of the person or entity submitting the bid, and must be on the form(s) provided in this booklet or a photocopy thereof. The DNR will not accept bids that are not signed, and will not accept bids that are not on the current, approved bid form. All appropriate blanks including Agreement Number, Sort Number, Bid amount (per mbf or ton as appropriate for the sort), Bid deposit amount and type. Signatures and date on bid form must be completed including the bid bond number if bidder is relying upon a bid bond for bid deposit.

Bids shall not be accepted if a completed '**Log Sort Sealed Bid Supplemental Information Form**' is not included with the approved '**Log Sort Sealed Bid Form**'.

Required log lengths for tonnage sorts: Preferred log lengths for tonnage sawlog sorts shall include the following plus any additional lengths identified on the Bid Supplemental Information form:

Species Type	Preferred Lengths
Conifer Sorts	16', 20', 24', 26', 32', 40'
Hardwood Sorts	18', 20', 26', 28', 30', 36', 38', 40'

For more specific information, contact the appropriate region office.

In-Person Bids

- A. Sealed bids must be in auction box or auction envelope before 10:00 a.m. on the day of sale at the location specified in the notice of sale.
- B. Sealed bids must be submitted in an envelope with the name of the sale, the bidder's name and the contract agreement number clearly written on the outside of the envelope. The full legal name and business address of the bidder must be inserted where indicated on the form, and must be the same as the name on the bid bond and timber sale contract. The bid form must be signed by an authorized person. When a bidder has more than one person authorized to bid, then documentation of those persons with signature authority for bidding must accompany the bid or be on file at the region office. Sealed bid envelopes are available at all region offices. One bid per envelope.
- C. Sealed bid envelopes must contain the following:
 1. A completed '**Log Sort Sealed Bid Form**';
 2. A completed '**Supplemental Information Form**' and;
 3. A bid deposit

Mailed Bids

- A. Mail-in bid envelopes are required to have printed on the outside: "DO NOT OPEN UNTIL SALE DATE. SEALED BID ENCLOSED." The sealed bid envelope(s) will be enclosed inside the mailed-in envelope. Mailed bids must be submitted in an envelope with the name of the sale, the bidder's name and the agreement number clearly written on the outside of the envelope. The full legal name and business address of the bidder must be inserted where indicated on the form, and must be the same on the bid bond and timber sale contract. The bid form must be signed by an authorized person. When a bidder has more than one person authorized to bid, then documentation of those persons with signature authority for bidding must accompany the bid or be on file at the region office. Mail-in envelopes are available at all region offices. One bid per mailed-in envelope.
- B. Mail-in or otherwise delivered bids will be accepted up to 4:30 p.m. the last business day before the auction by the region office in which the sale is located. Bidders assume the risk for the method of delivery they chose. The DNR assumes no responsibility for any delays caused by any delivery service.
- C. Sealed bid envelopes must contain the following:
 1. A completed '**Log Sort Sealed Bid Form**';
 2. A completed '**Log Sort Sealed Bid Supplemental Information Form**' and;
 3. A bid deposit

Department of Natural Resources Region Offices

Olympia Headquarters
 1111 Washington St SE
 MS 47000
 Olympia, WA 98504-7000
 (360) 902-1000
www.dnr.wa.gov

Product Sales & Leasing Division

1111 Washington St SE
 MS 47014
 Olympia, WA 98504-7014
 (360) 902-1600

South Puget Sound Region
 950 Fairman Ave N
 Enumclaw, WA 98022-9282
 (360) 825-1631

Pacific Cascade Region

601 Bond Road
 PO Box 280
 Castle Rock, WA 98611-0280
 (360) 577-2025

Southeast Region

713 Bowers Road
 Ellensburg, WA 98926-9301
 (509) 925-8510

Northwest Region

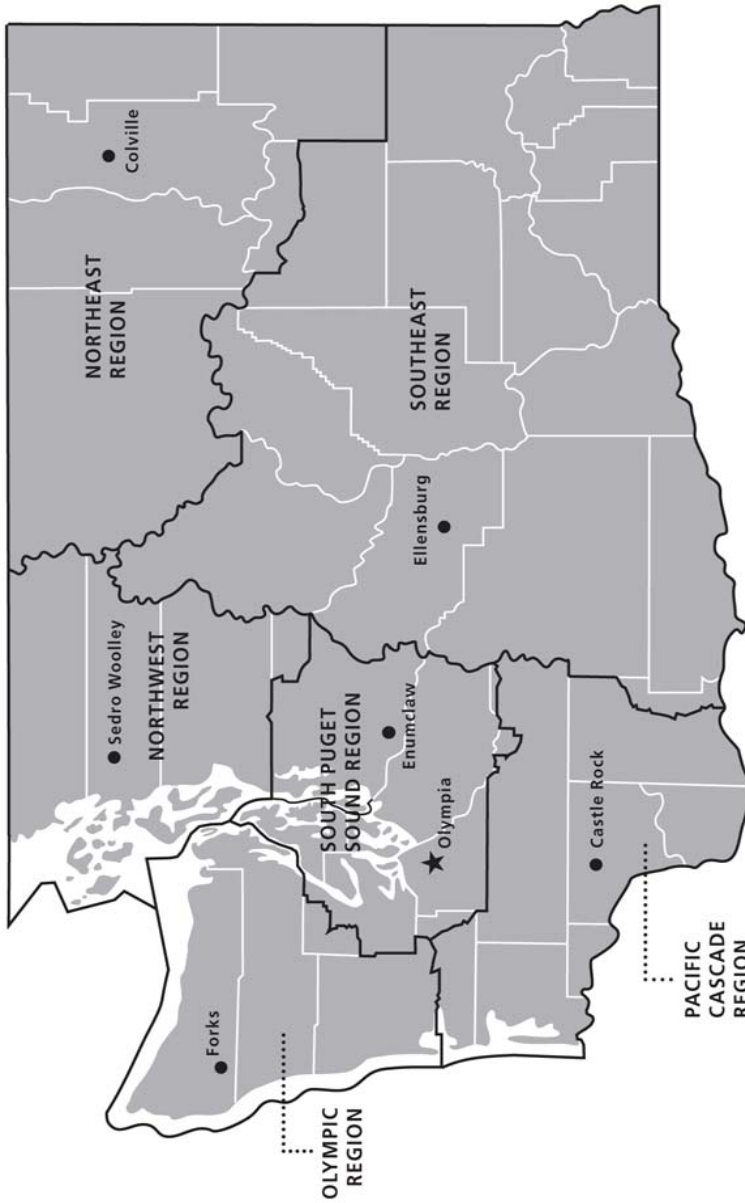
919 N Township St
 Sedro Woolley,
 WA 98284-9384
 (360) 856-3500

Olympic Region





411 Tillicum Lane
 Forks, WA 98331-9271
 (360) 374-2800

Northeast Region

225 S Silke Road
 PO Box 190
 Colville, WA 99114-0190
 (509) 684-7474



DNR REGIONS

-  DNR Region Boundaries
-  County Boundaries
-  DNR Region Office
-  Olympia Headquarters



WASHINGTON STATE DEPT OF
NATURAL RESOURCES



For more information about how public lands are managed visit DNR's web page at www.dnr.wa.gov

Fire, Burn Ban Information and Region Offices
 Toll Free: 1-800-527-3305 General TTY: 7-1-1





WASHINGTON STATE DEPT OF
**NATURAL
RESOURCES**

1111 WASHINGTON ST SE
MS 47014
OLYMPIA WA 98504-7014

www.dnr.wa.gov

For alternate formats
of this document,
Call (360) 902-1000
TRS: 7-1-1

PRINTED IN THE USA ON RECYCLED PAPER

