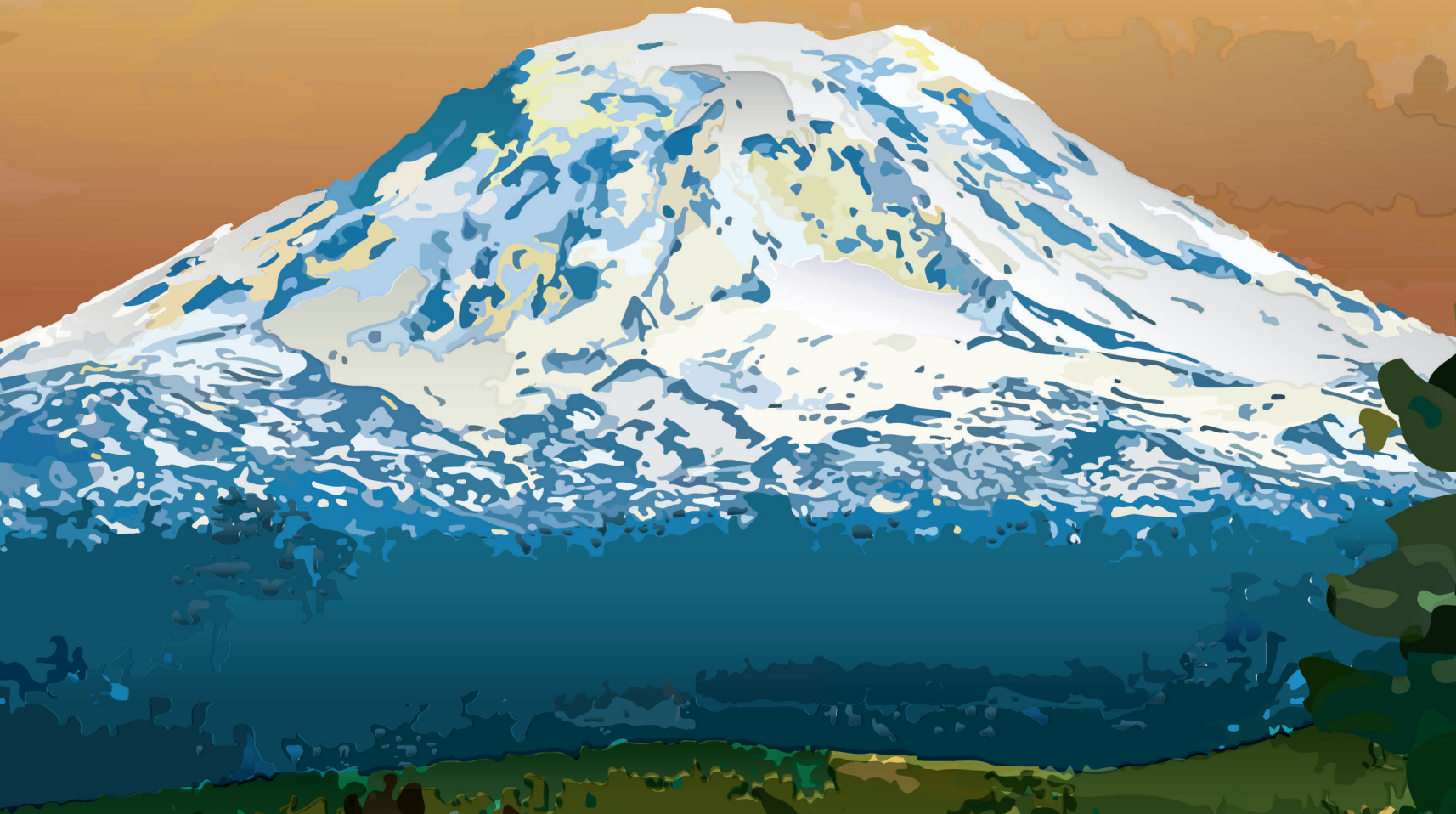


# ADAMS



## Are You Volcano Ready?

Mount Adams, Washington's largest volcano, last erupted 3,500 years ago. The summit's weakened rock makes it susceptible to landslides. 6,000 years ago a massive landslide and volcanic mudflow (lahar) swept the Trout Lake lowland to the Columbia River. Events of the future could resemble those of the past.

- Get to know your local volcano's hazards
- Register for notifications about the volcano's activity
- Make a plan to prepare your entire family for any emergency



Learn more about Mount Adams hazards:  
<http://volcanoes.usgs.gov/volcanoes/adams/>

