

# White Salmon Direct Transfer



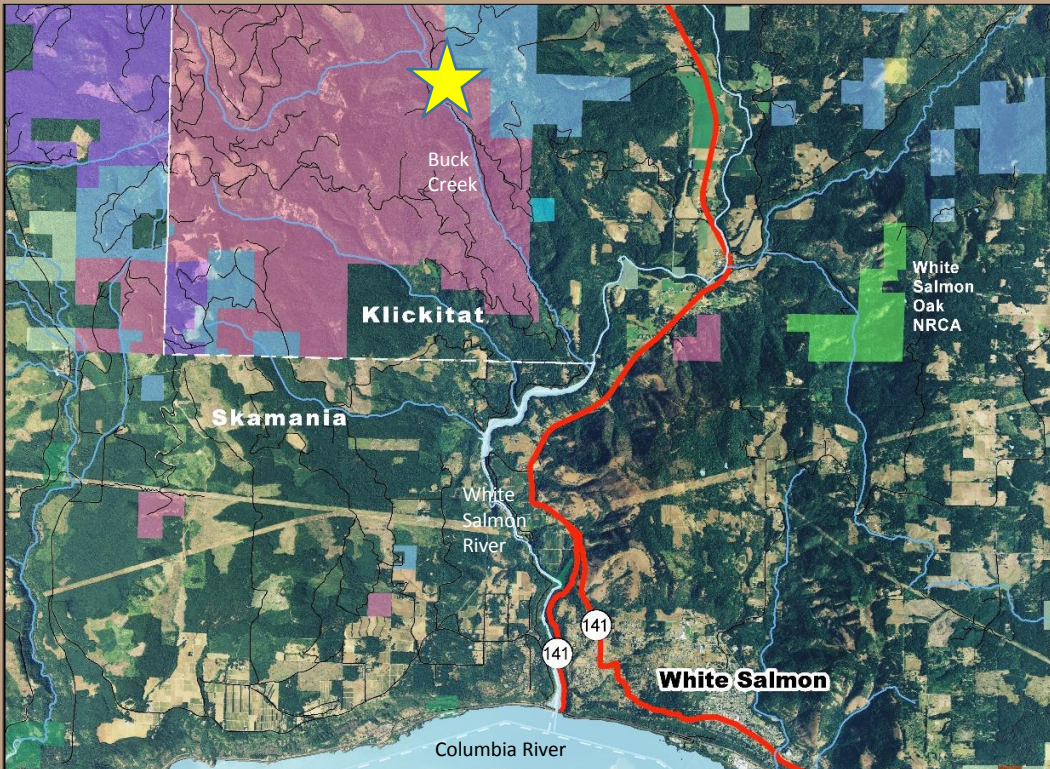
DNR photo

## Klickitat County



# White Salmon Transfer

## Property Overview

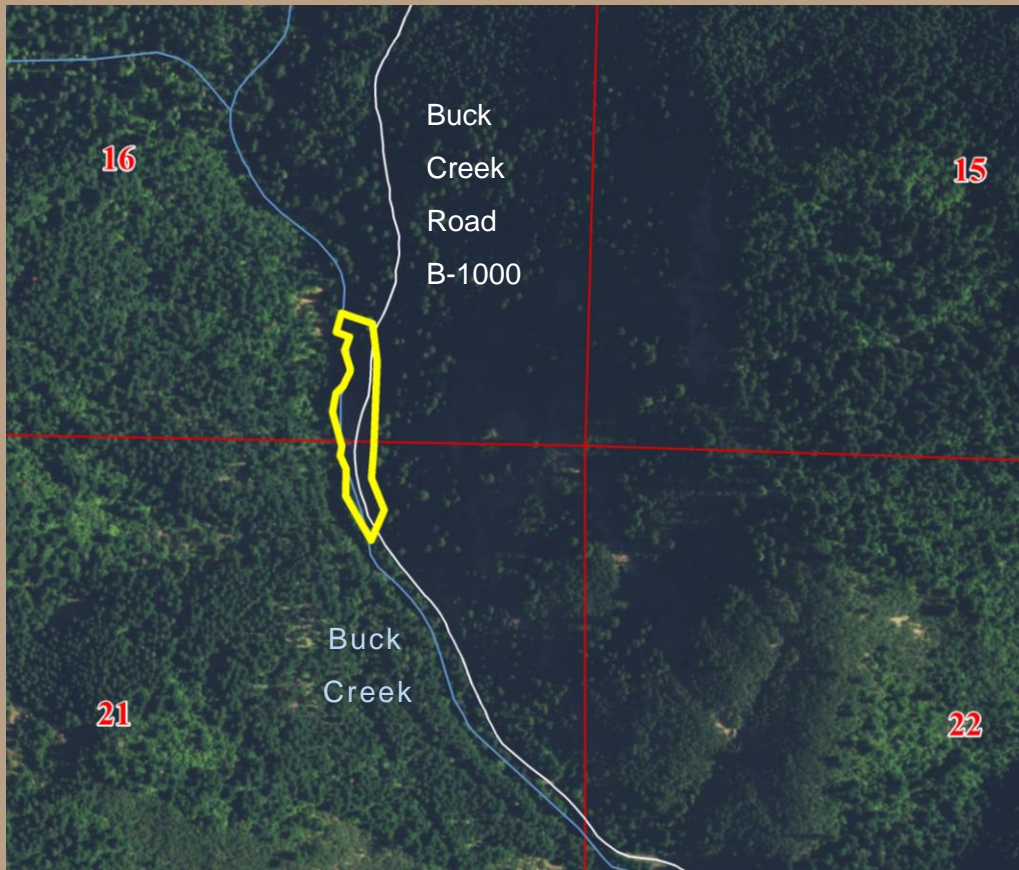


- Transfer to City of White Salmon; RCW 79.17.200
- Common School Trust
- Water intake site for City of White Salmon
- Started in the 1930's
- Located in the riparian zone of Buck Creek



# White Salmon Transfer

## Property Features



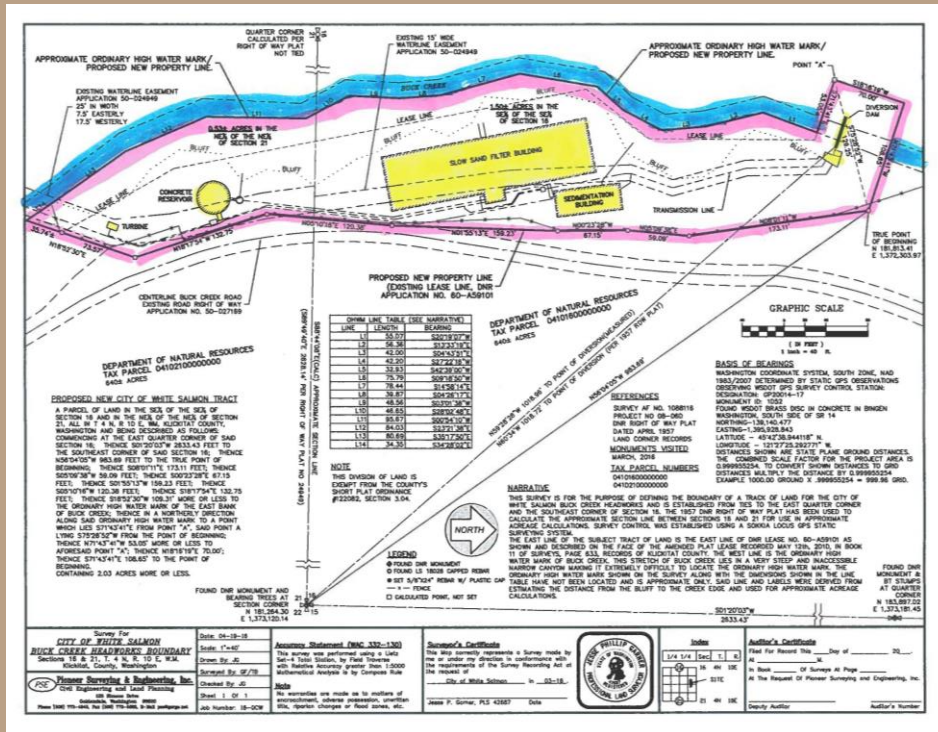
- Near Buck Creek
- 2.03 acres; approx. 100' by 800'
- Trees not harvestable
- Zoned Forest Resource 1 home/20 acres
- Leased to city; 2010 improvements



# White Salmon Transfer

## Property Features

- Tenant improvements; diversion dam, filtration structures, water tank, water pumps, piping, fencing
- Easement access grant \$66,389; 5 years @6%; Permanent Account -03



# White Salmon Transfer

## Appraisal

Appraisal	Acreage	Land Value	Total
White Salmon	2.03 Acres	\$17,000	\$ 17,000
			\$8,374/acre

## Distribution of Funds

**100% to Real Property Replacement Account**





# White Salmon Transfer



