

McKinley Bridge

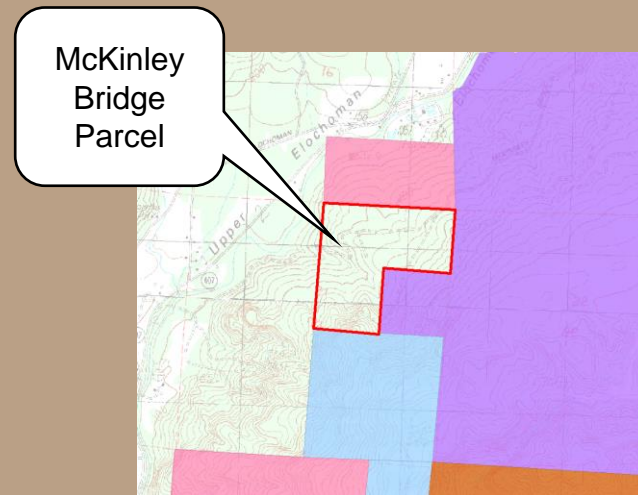
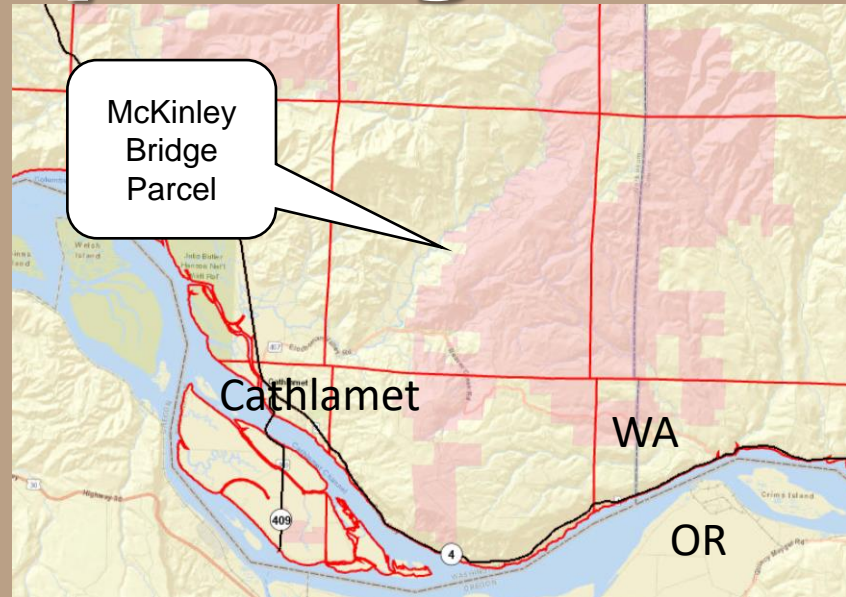
TRUST PURCHASE Wahkiakum County



McKinley Bridge

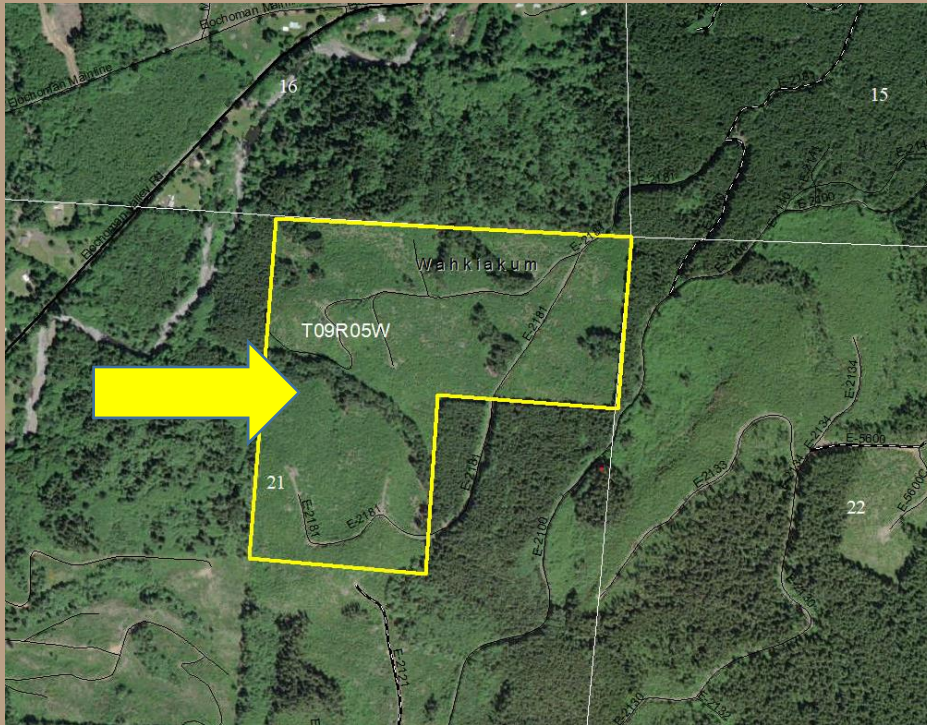
Location

- 14 miles NE of Cathlamet, WA
- Wahkiakum County
- Private edge-holding in DNR's Elochoman State Forest
- Purchase with Encumbered State Forest Land Trust funds from Legislature



McKinley Bridge

Property



- 119.4 acres
- 10-12 year old conifer
- Site Class II-DF
- Site Index DF-135
- Road system on current state trust lands

McKinley Bridge

Benefits

- Adds productive forestland to the trust land base in Wahkiakum County
- Removes a private edge-holding within DNR-managed trust lands
- Provides permanent DNR road control and road management
- Improves trust revenue potential

McKinley Bridge

Negotiated Purchase Price:

- \$495,000; \$4,155 / acre
- Encumbered State Forest Land Trust funding from the Legislature. Part of \$5 million for three SW WA counties.
- Beneficiary to be Wahkiakum County.

McKinley Bridge

Questions ?

Resolution #1604



