



# Cape Horn Minerals

**Direct Transfer to the USFS**

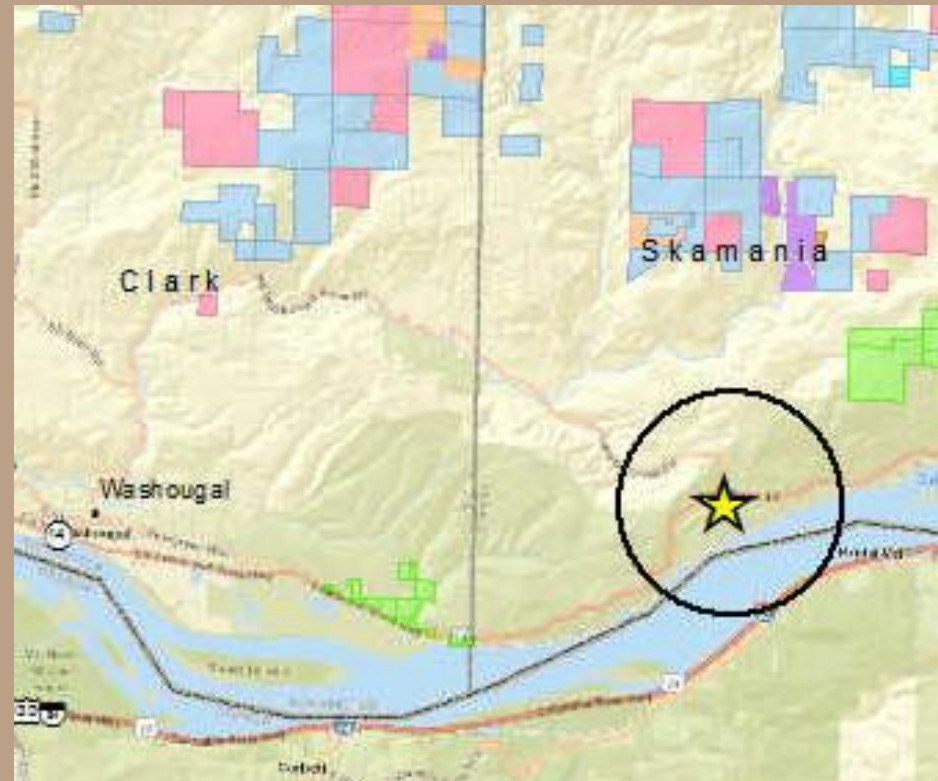
**Skamania County**



# Cape Horn Minerals

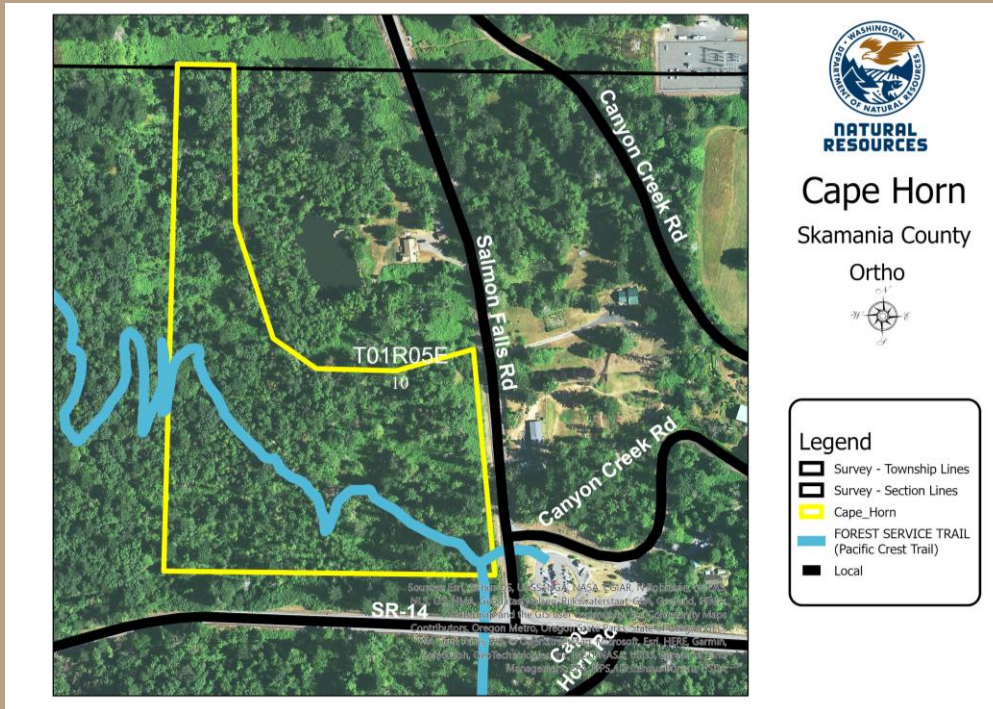
## Location

- Common School trust - mineral rights only
- Skamania County
- 8 miles east of Washougal
- Within Columbia Gorge Scenic Area



# Cape Horn Minerals

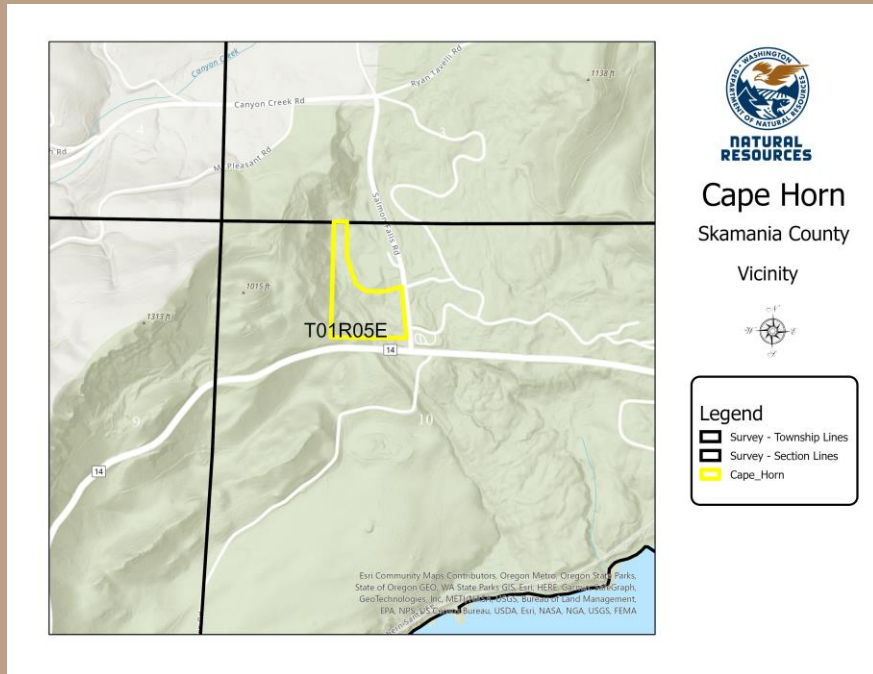
## Property



- 13 acres +/-
- Common School trust retained mineral rights when the parcel was sold
- USFS now owns the surface on the parcel
- Pacific Crest Trail runs through the parcel.

# Cape Horn Minerals

## Overview



- Under RCW 79.11.220 state mineral rights may be transferred to the federal government
- DNR transferred mineral rights on a nearby parcel in 2020.
- No known mineral potential, no value assigned to rights.
- USFS is paying transfer costs.

# Cape Horn Minerals

## Resolution 1622

Questions?



