

BLOEDEL 90

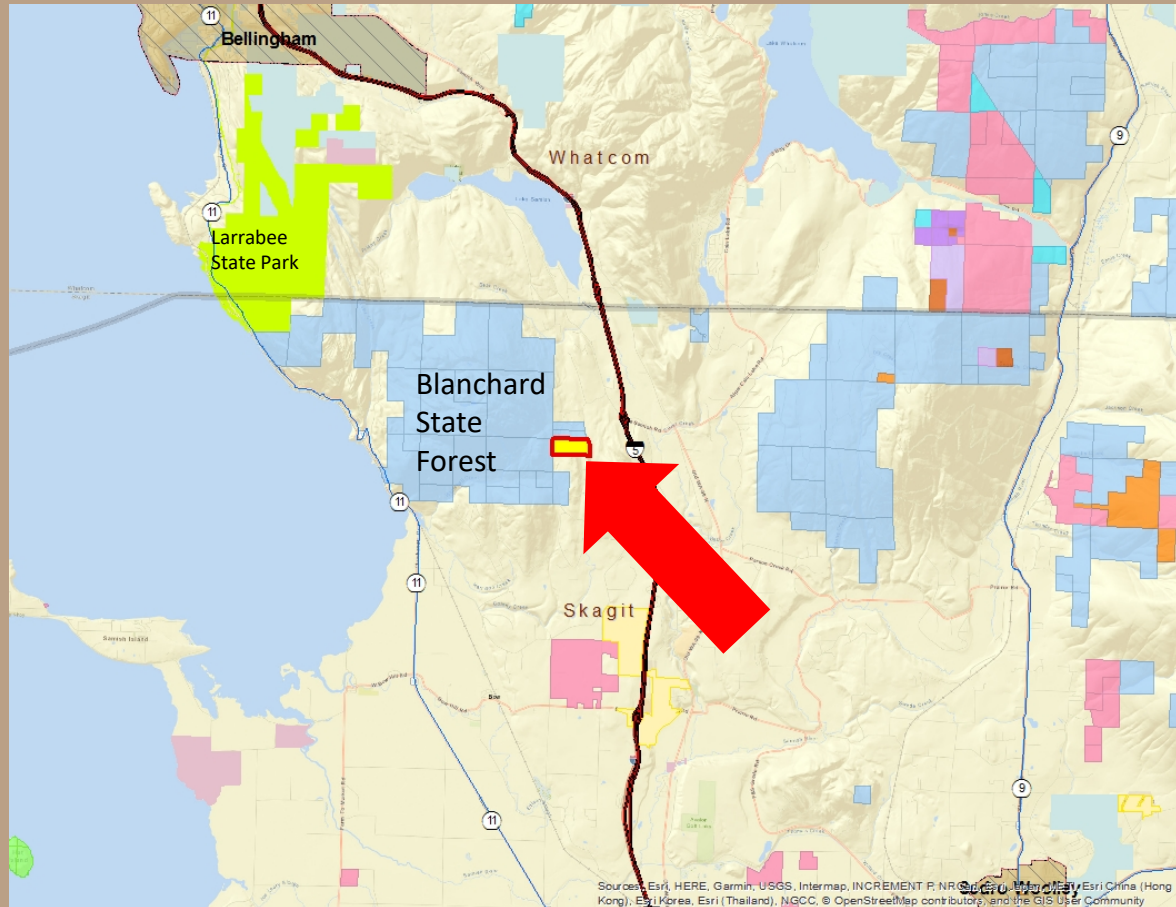
Trust Purchase

Skagit County



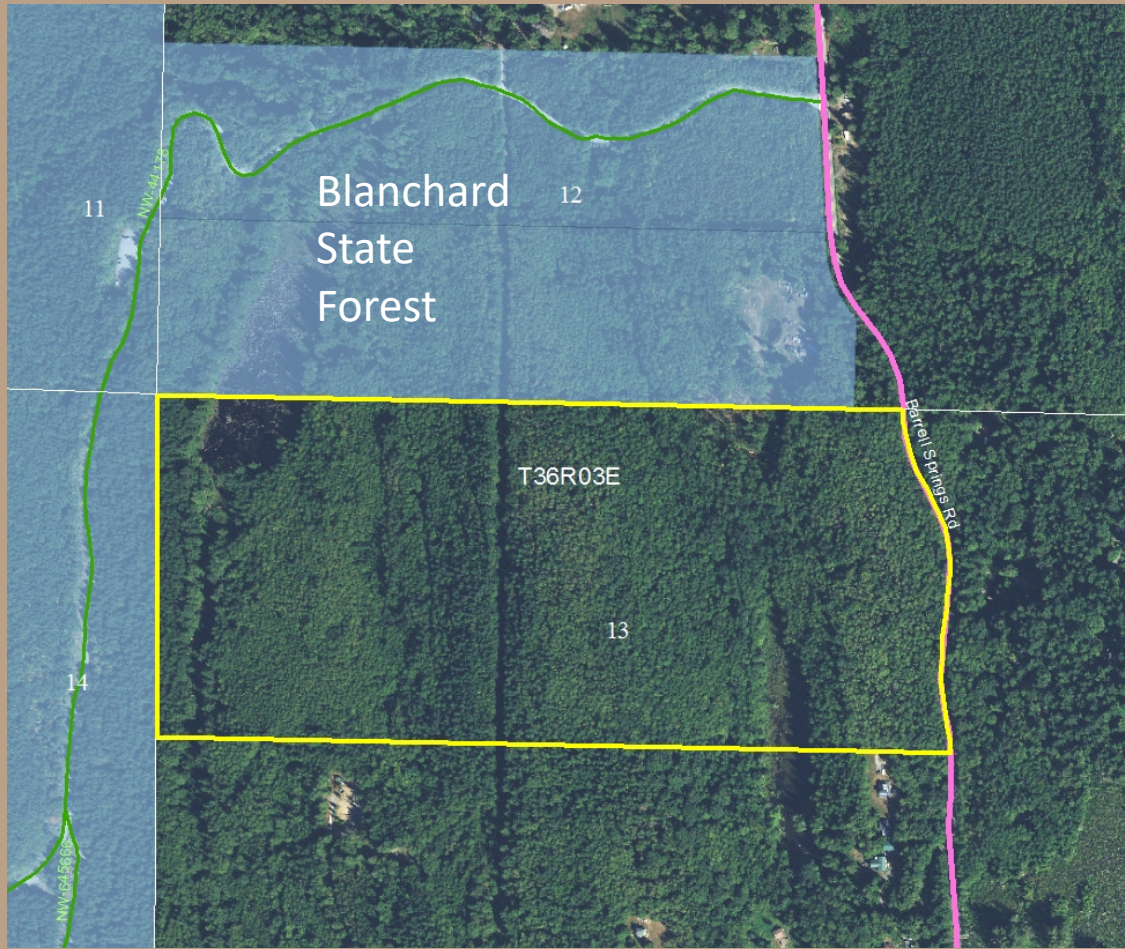
Bloedel 90 Purchase

Vicinity



Bloedel 90 Purchase

Overview – Bloedel 90



- 89.58 acres
- Site Class 2; DF-133
- Mixed hardwoods & conifer; small saw timber; 419 MBF-21ac
- Ground lead logging
- Lower elevation - all season timber harvest

Bloedel 90 Purchase

Overview – Bloedel 90



- Logging road system in place
- Zoning - 3 home sites
RR-10ac RR-NRL-40ac
- Barrell Springs County
Road access
- High asset value
appreciation area



Bloedel 90 Purchase

Bloedel 90 Stand Age Classes and Operability

Age Class	Acres – Approximate
1-10	0.7
21-30	12.5
31-40	53.2
Wetlands, Buffers, Roads	23.18
Total Acres	89.58



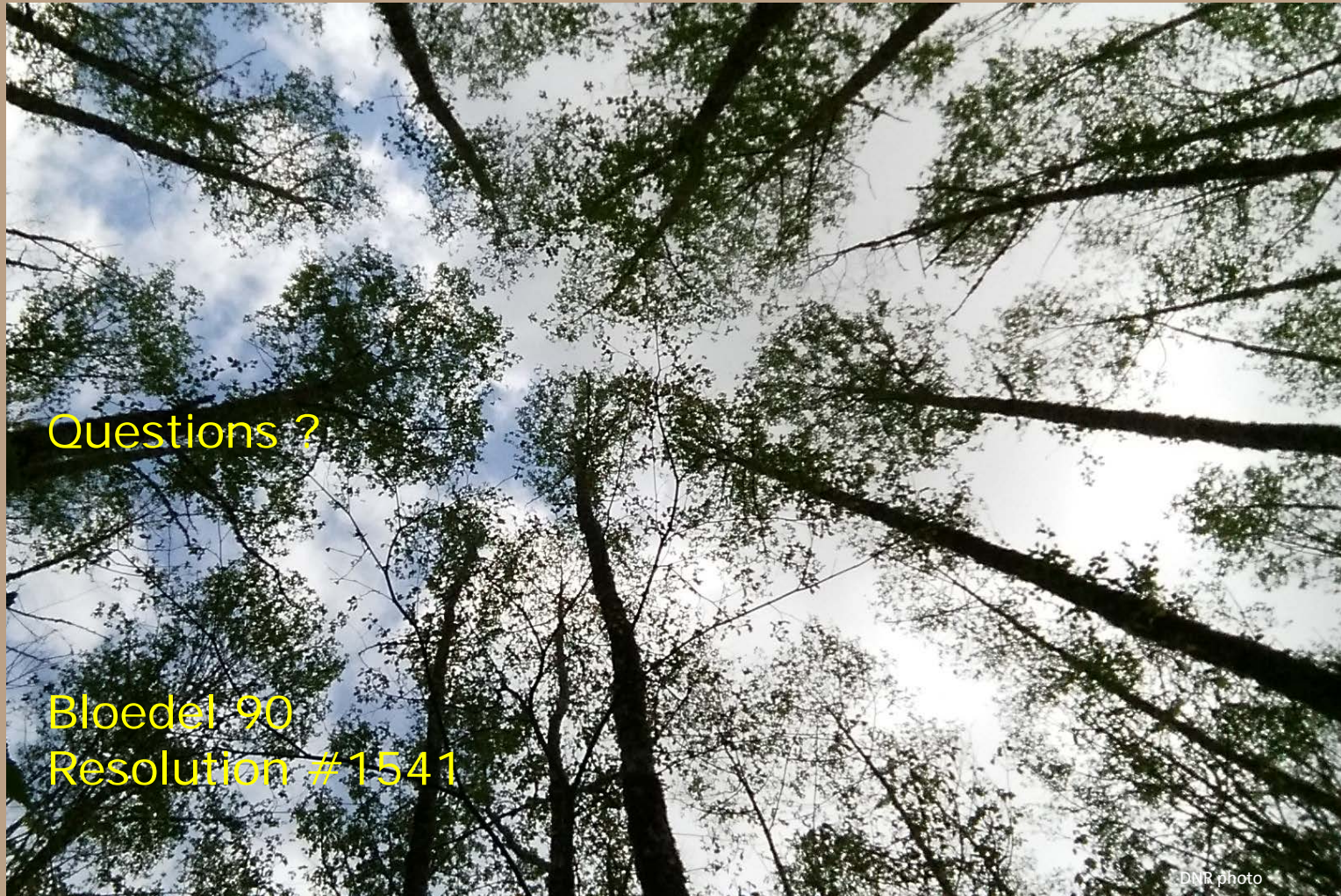
Bloedel 90 Purchase

Valuation Bloedel 90

Acres	Tree Value	Land Value	Total Value
89.58	\$354,000	\$142,000	\$496,000



Bloedel 90 Purchase



Questions ?

Bloedel 90
Resolution #1541

DNR photo



