



# Big Bend

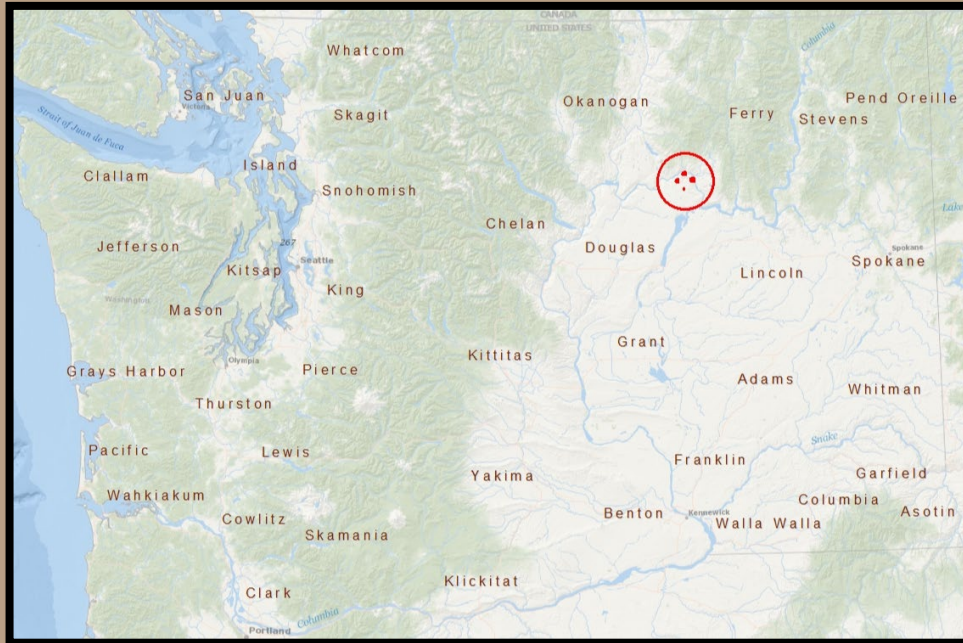
## Proposed Direct Transfer

### Douglas County



# Big Bend

## Overview

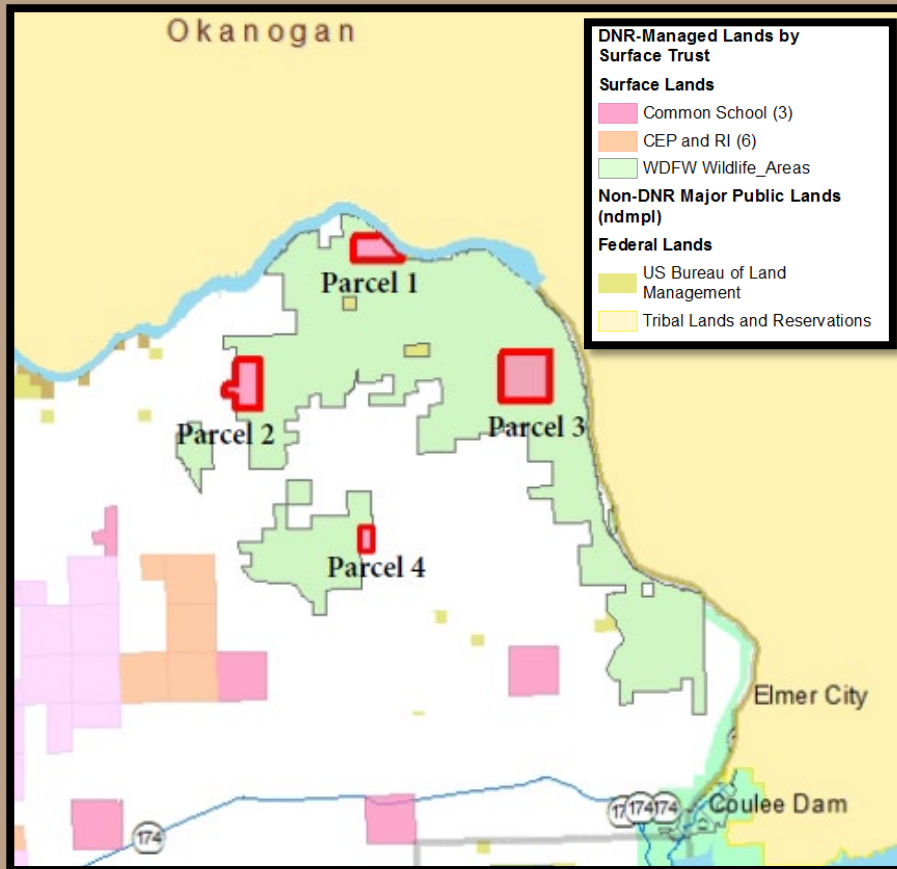


- Common School Trust
- Douglas County
- 10 miles north of Grand Coulee
- 4 parcels, total of 1,360 acres
- Transfer to DFW



# Big Bend

## Overview



- Parcels are inholdings or edge holdings within WDFW Big Bend Wildlife Area
- Funded through the 2016 Mid Columbia WWRP grant
- DFW will assume the current grazing leases



# Big Bend

## Parcel 1

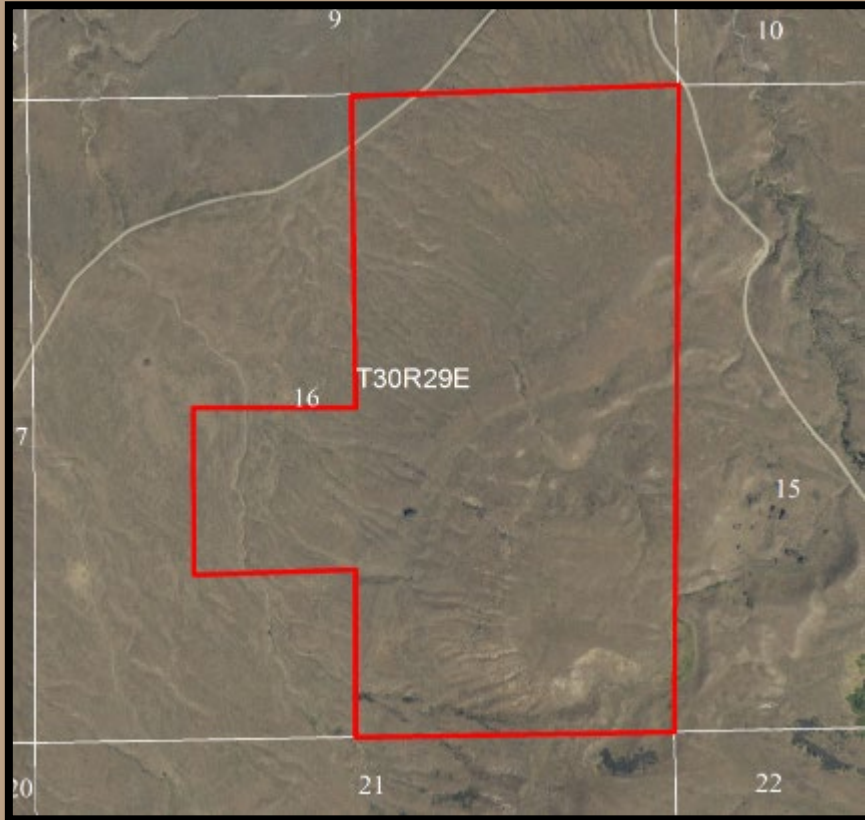


- 284.50 acres
- Overflow easement granted to the USA for approximately 80 acres
- Annual Rent: \$1,121 (includes parcel 2)
- DNR inholding
- Access is through an agreement with DFW



# Big Bend

## Parcel 2

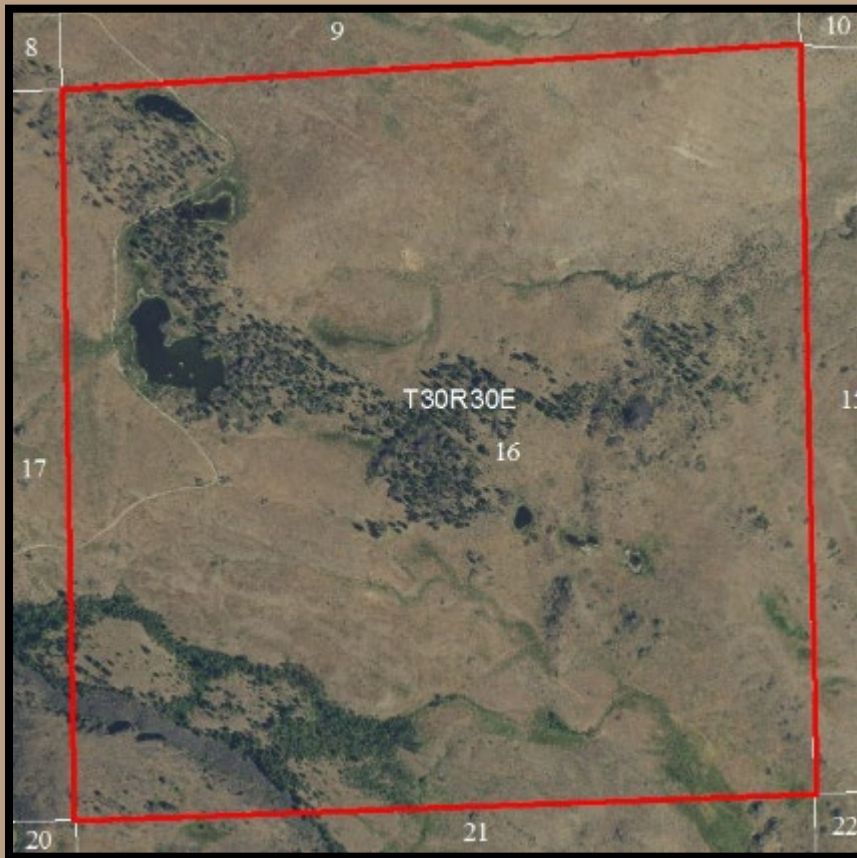


- 360 acres
- Subject to easement for county road (Strahl Road)
- Leased with Parcel 1
- DNR edge holding



# Big Bend

## Parcel 3



- 640 acres
- No legal access
- DNR inholding



# Big Bend

## Parcel 4



- 80 acres
- Annual Rent: \$155
- DNR edge holding
- No legal access



# Big Bend

Parcel 1 - \$57,000

Parcel 2 - \$90,000

Parcel 3 - \$160,000

Parcel 4 - \$24,000

**Total  
Appraised  
Value:**

**\$331,000**



# Big Bend

## Benefits

- Facilitates repositioning a trust asset to lands better suited for long-term revenue production.
- The proceeds will be used to purchase replacement land for the Common School Trust.
- Consolidates DFW ownership and management in the Big Bend Wildlife Area.



# Big Bend

## Resolution 1571

Questions?



