

# Marbled Murrelet Long-term Conservation Strategy Draft Alternatives



A Report to the Board of Natural Resources  
Kyle Blum, Department of Natural Resources

# Identifying Alternatives

## Marbled Murrelet Long-term Conservation Strategy

Drafted a range of potential alternatives that represent conservation strategies to meet both agencies criteria.



# Alternatives

## Key Questions

- Does the alternative address the Need, Purpose and Objectives?
- Does the alternative address the Endangered Species Act Section 10 issuance criteria?
- What habitat will be conserved?
- How will the forest be managed?
- How will potential impacts be mitigated?
- How will the alternatives affect the murrelet population?



# Marbled Murrelet

# **ALTERNATIVES**



# Habitat Conserved Acres of Long-term Forest Cover

Alternative	LTFC Acres*
Alternative A	621,000
Alternative B	594,000
Alternative C	636,000
Alternative D	635,000
Alternative E	734,000

\* LTFC acre numbers are draft and subject to change without notice



# Alternatives

## Areas of Long-term Forest Cover

Existing Habitat Conservation	A	B	C	D	E
Natural Areas	√	√	√	√	√
Riparian Management Zones	√	√	√	√	√
Conservation Commitments	√	√	√	√	√
Existing NSO – high quality	√	√	√	√	√
Existing NSO – low quality					√

# Habitat Conserved Areas of Long-term Forest Cover

Marbled Murrelet Habitat Conservation	A	B	C	D	E
Occupied sites – HCP surveyed	✓				
Occupied sites – Science Team mapped		✓	✓	✓	✓
Buffers on occupied sites	✓ 100m	0	100m on all, except OESF where sites greater than or equal to 200 acres have 50m		✓ 100m
Habitat types identified under interim strategy	✓				
Marbled murrelet management areas identified in the Science Team Report					✓ Plus areas established in North and South Puget
High quality habitat (P-stage >.47)			✓		
Emphasis areas			✓		
Special habitat areas			✓	✓	



# Alternatives

## Forest Management

Forest Management Inside LTFC	A	B	C	D	E
Harvests that create large openings, such as clear cuts and variable retention harvests	No planned harvests allowed.				
Limited management (includes silvicultural treatments such as commercial thinnings, reforestation)	Treatments are allowed in operable, non-marbled murrelet habitat consistent with other land management objectives.				
Marbled Murrelet habitat enhancement treatments	✓	✓	Habitat enhancement treatments are allowed in non-habitat areas within emphasis areas and special management areas with the objective of developing habitat within the life of the HCP.		✓





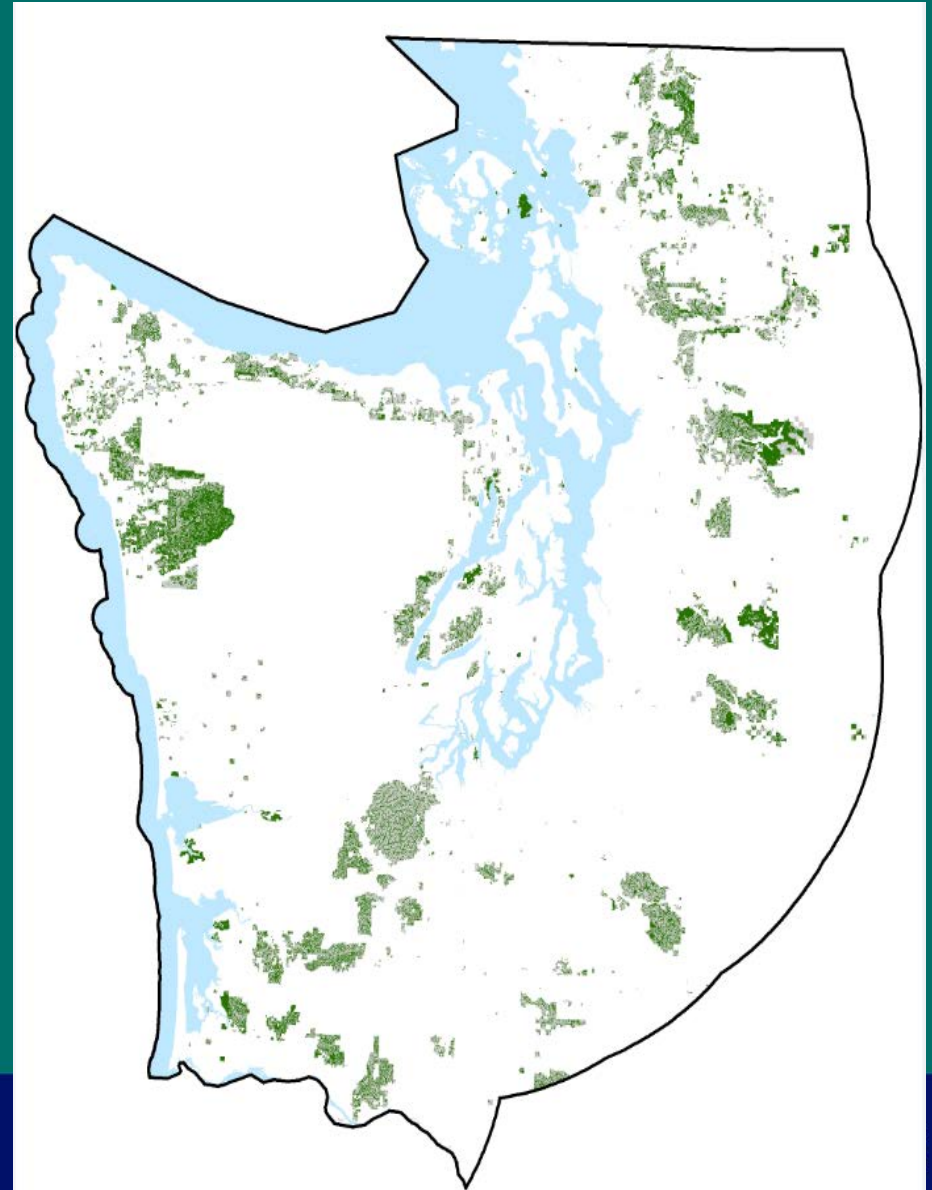
# Alternatives Forest Management

Forest Management Inside LTFC	A	B	C	D	E
Salvage	Salvage is allowed, consistent with the HCP and objectives of the conservation strategy.				
Non-timber harvest land uses (roads, campgrounds, trails, etc.)	<p>Management of existing land uses and related infrastructure will continue per existing law and policy, with ongoing disturbance impacts to LTFC identified and mitigated.</p> <p><i>Note: rules for managing new infrastructure are still under development.</i></p>				



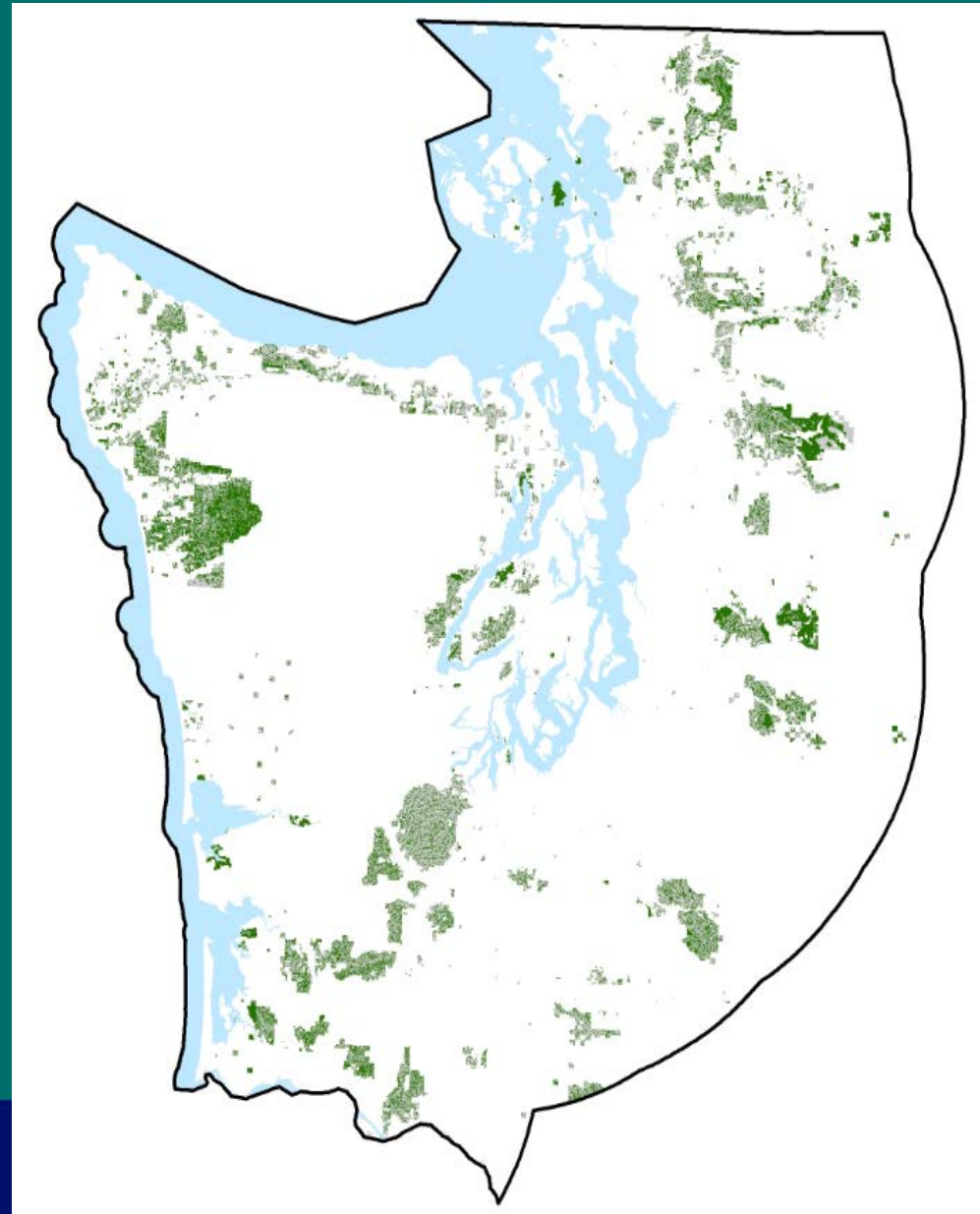
# Alternative Comparisons

- Alternative A  
(No Action)



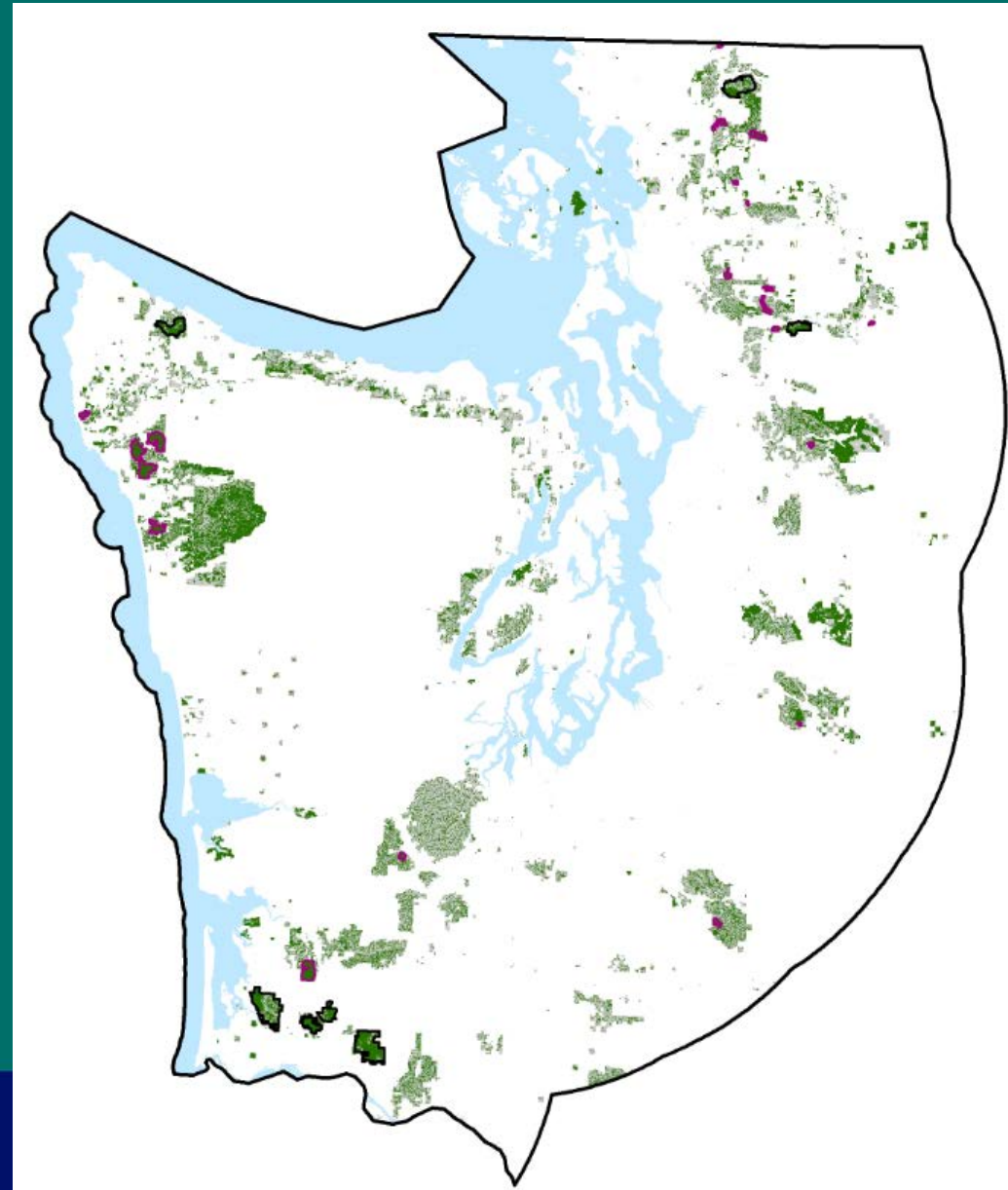
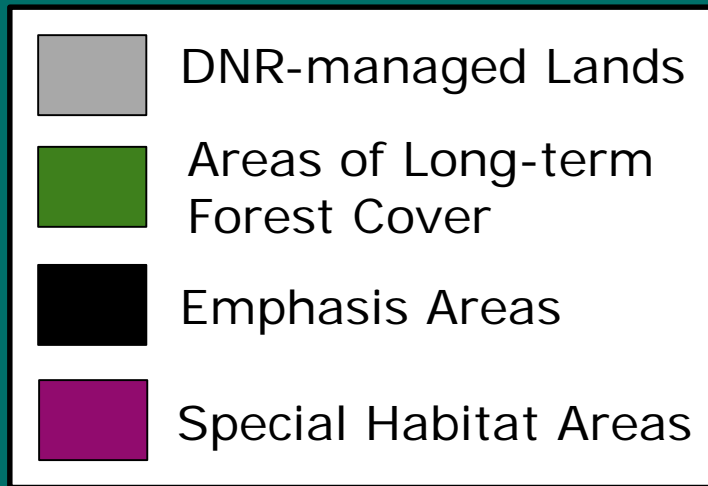
# Alternative Comparisons

- Alternative B



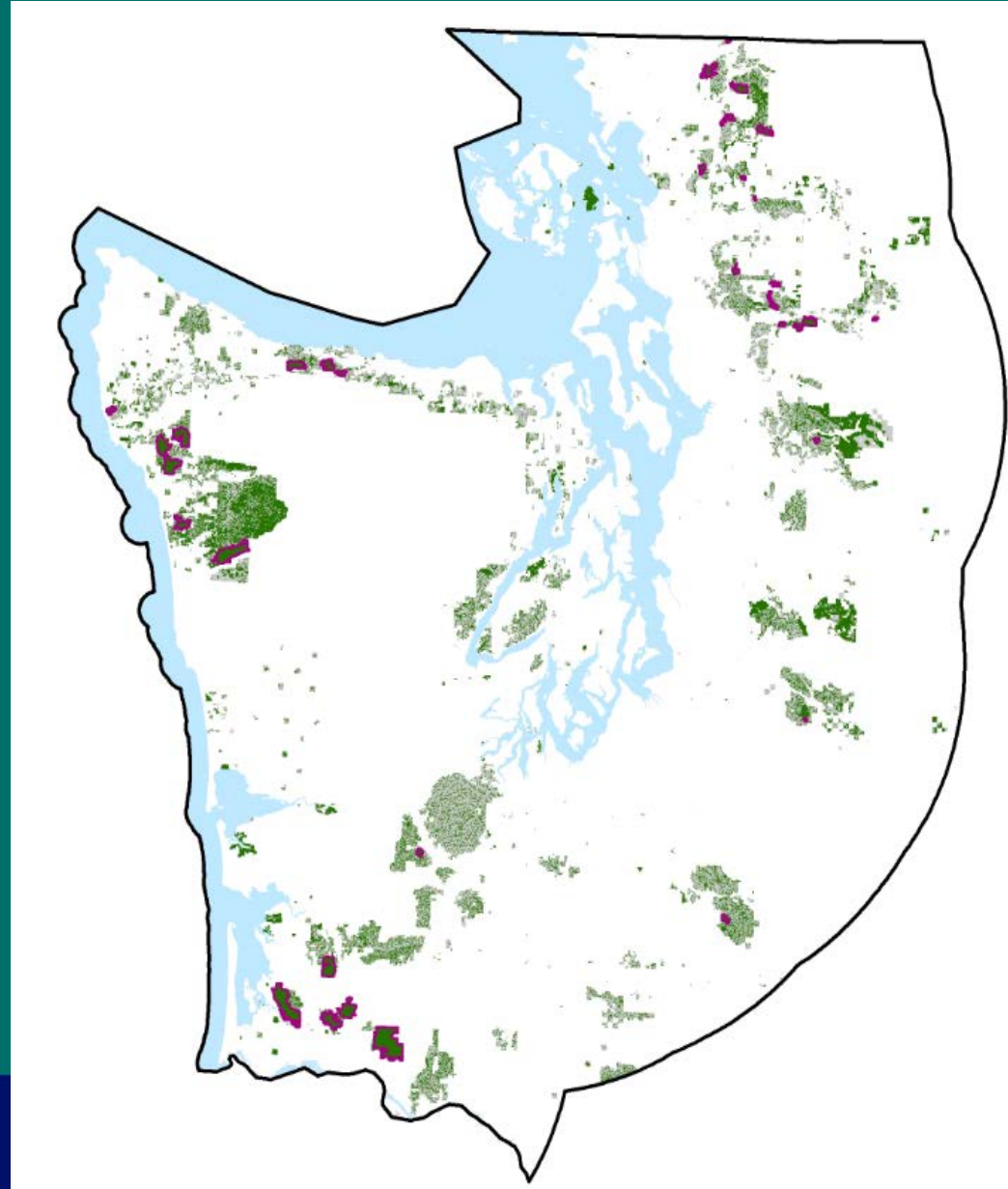
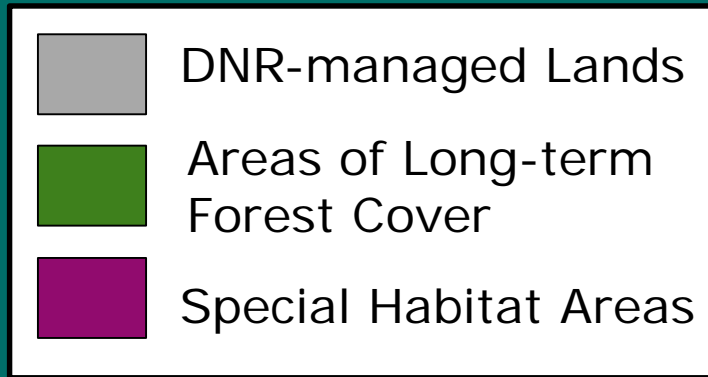
# Alternative Comparisons

## ■ Alternative C



# Alternative Comparisons

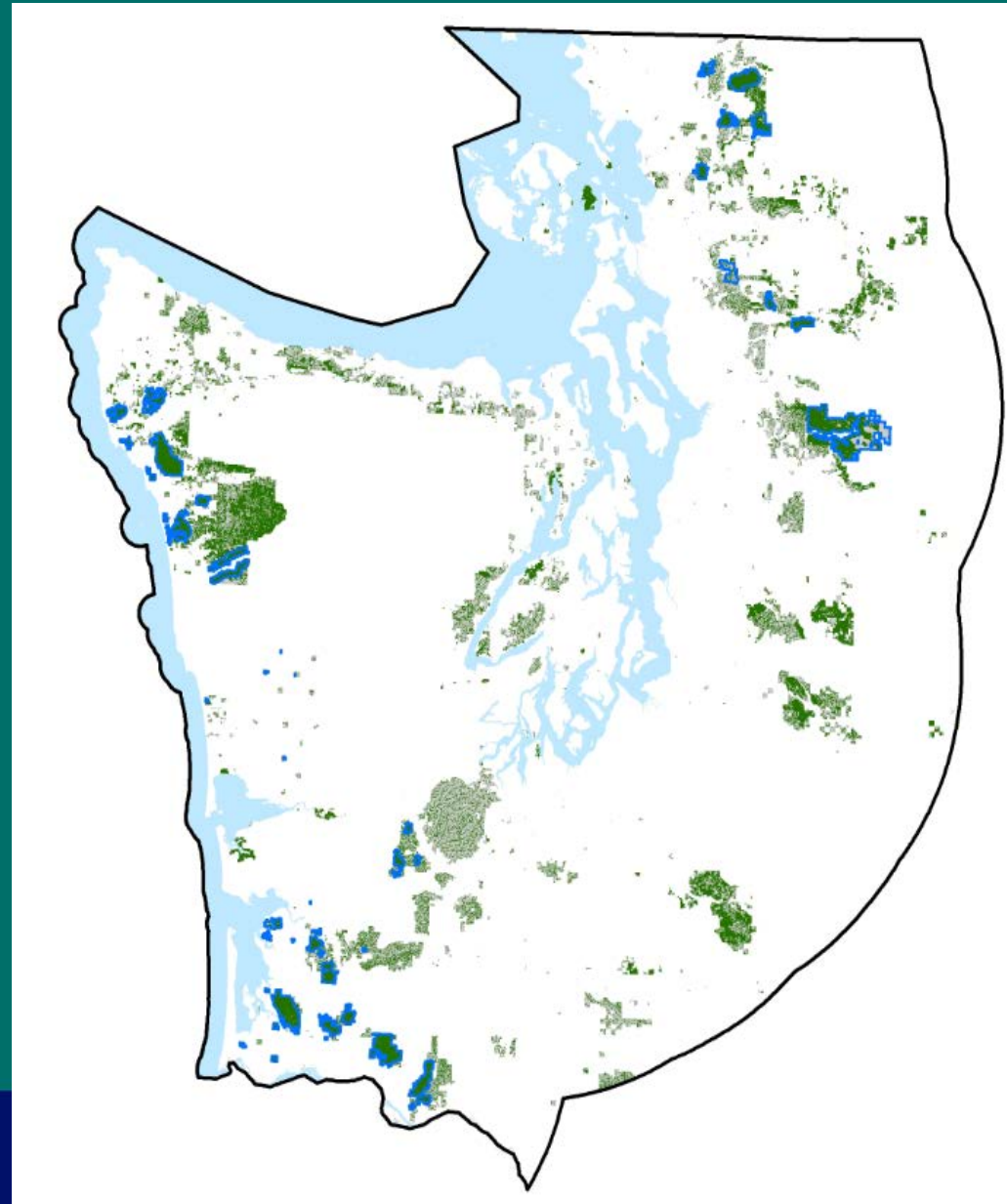
## ■ Alternative D





# Alternative Comparisons

## ■ Alternative E



# Thank you

